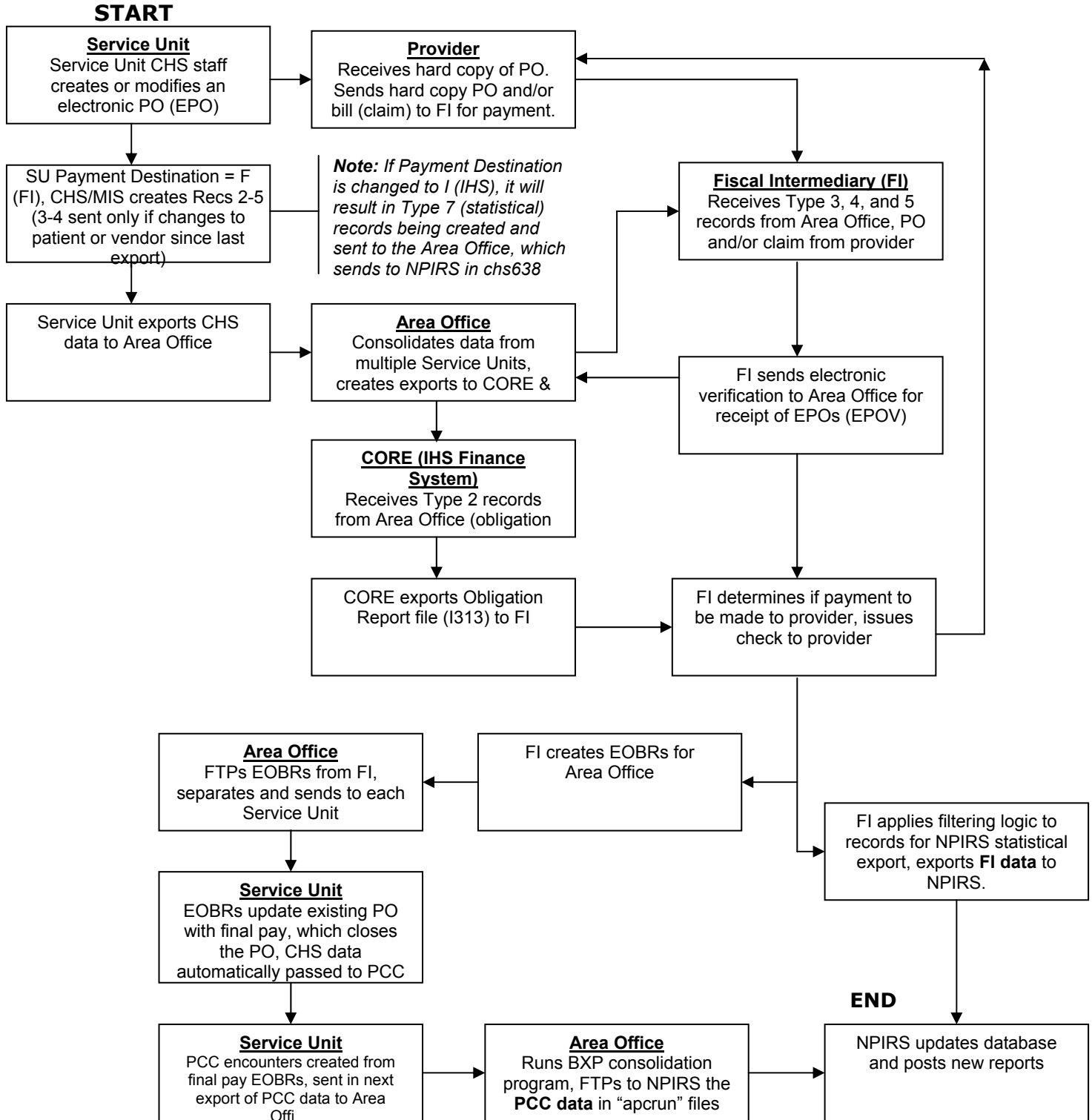


# CHS Data Movement Flowchart 2-A-2

## IHS (Federal) Service Units Using CHS/MIS and Sending CHS Data to the Area Office Using the CHS FI CHS to PCC Link is On



### Multiple Data Sources for NPIRS

In this scenario, the same CHS data may be sent from two different sources: (1) the CHS FI and (2) the PCC export. It is known that the CHS FI includes filtering logic based on service class code and may exclude records from being sent to NPIRS that PCC does not exclude in its exports to NPIRS. Thus multiple records might come from PCC and only one record from the CHS FI.