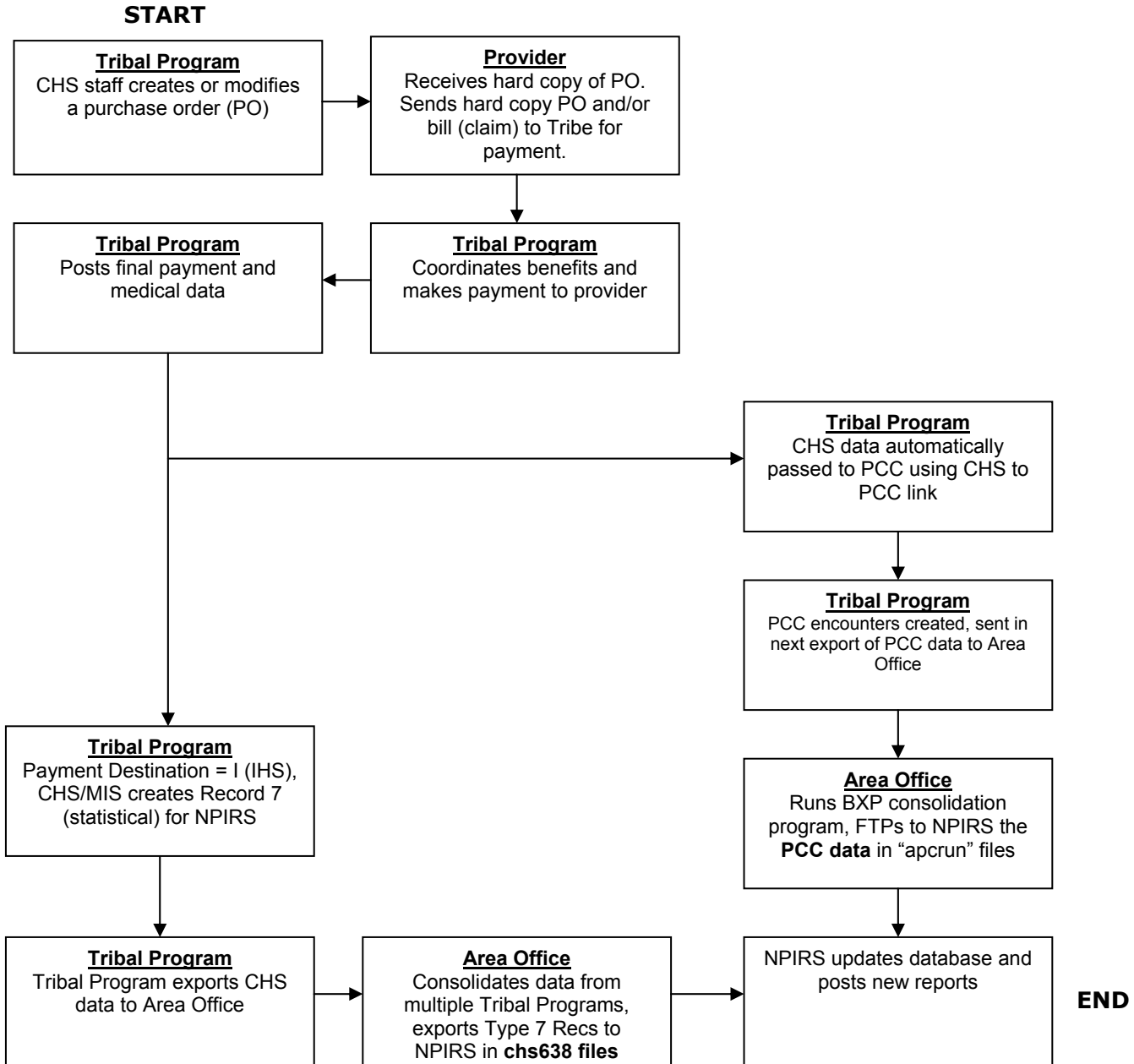


CHS Data Movement Flowchart 2-A-4

Tribal-Operated Programs Using CHS/MIS and Sending CHS Data to the Area Office Not Using the CHS FI CHS to PCC Link is On



Multiple Data Sources for NPIRS

In this scenario, the same CHS data may be sent from two different sources: (1) the CHS/MIS application in the chs638 files and (2) the PCC export.