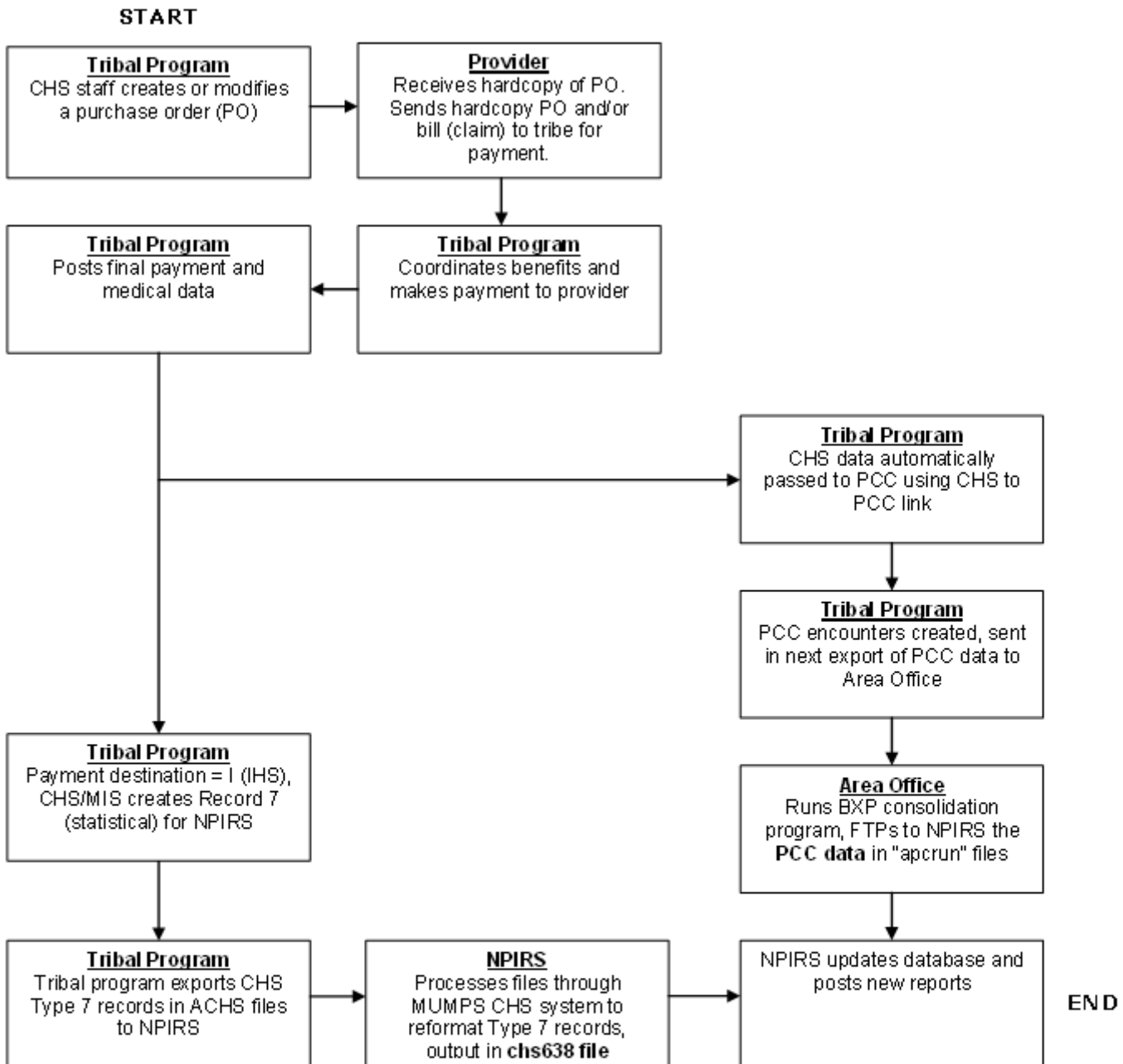


CHS Data Movement Flowchart 2-A-8

Tribal-Operated Programs
Using CHS/MIS and Not Sending CHS Data to the Area Office
Not Using the CHS FI
CHS to PCC Link On



Multiple Data Sources for NPIRS

In this scenario, the same CHS data may be sent from two different sources: (1) from CHS/MIS application in the ACHS files, and (2) from the PCC export.