



CALIFORNIA TRIBAL EPIDEMIOLOGY CENTER

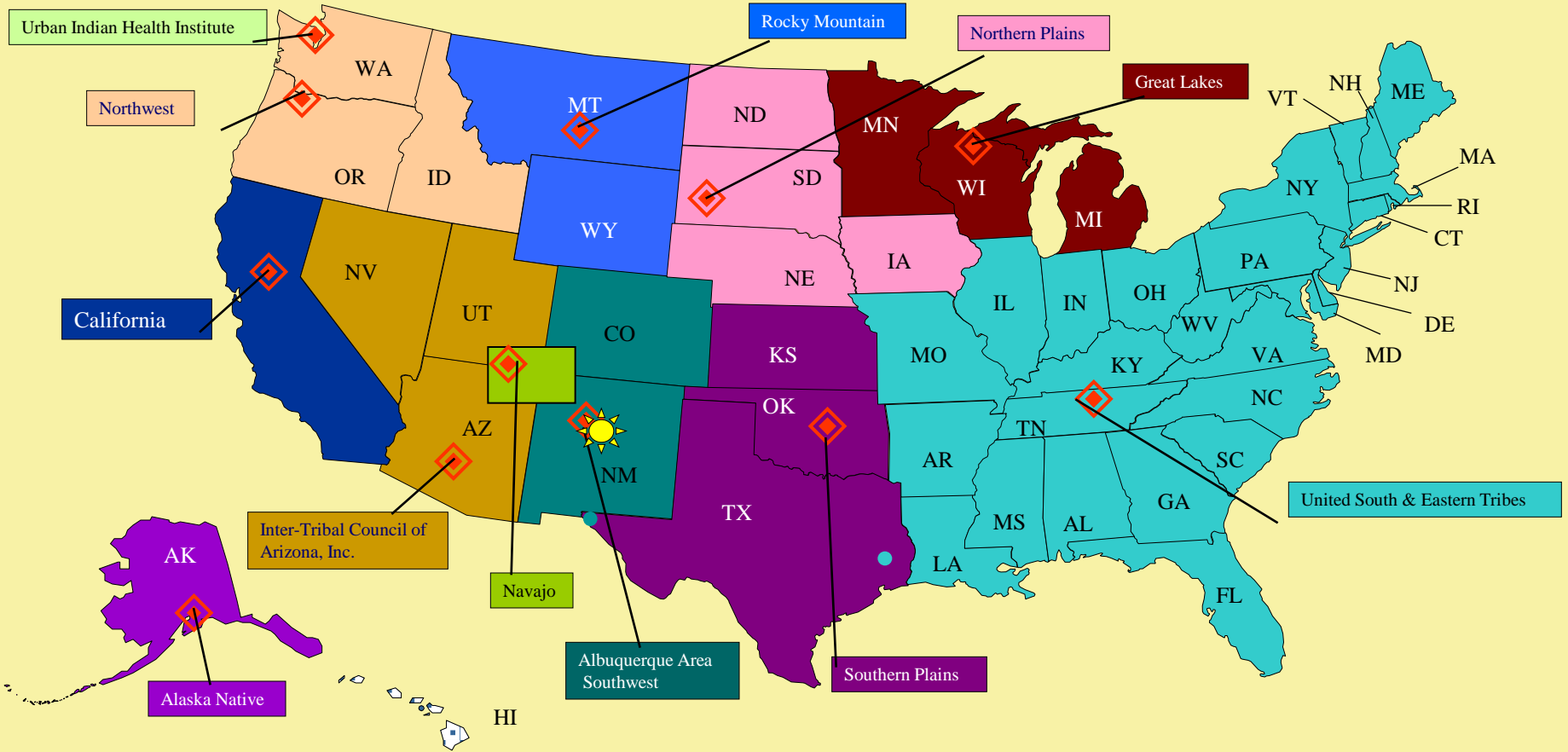
CALIFORNIA RURAL INDIAN HEALTH BOARD, INC. 1969



California Tribal Epidemiology Center: *2012-2013 Updates*

**Virginia Hedrick (Yurok/Karuk)
Outreach Coordinator**

Tribal Epidemiology Centers (TECs)



Our Mission



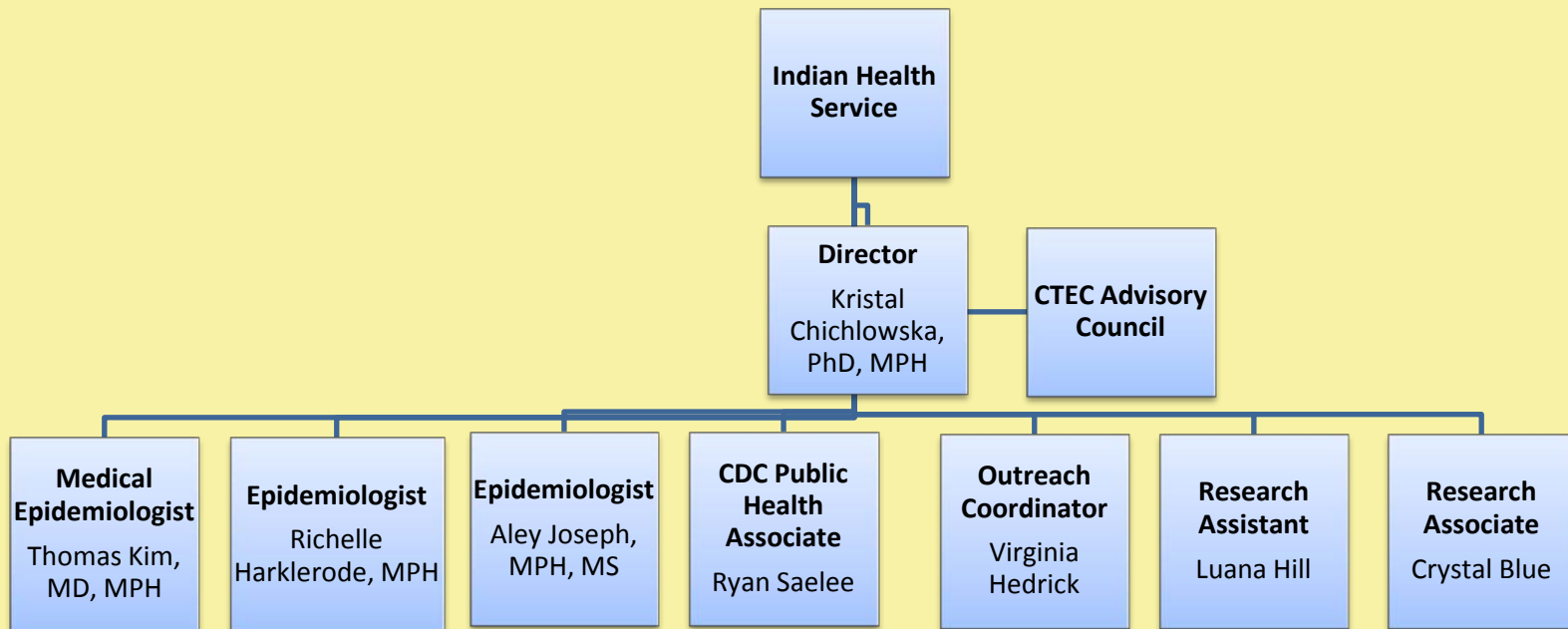
To improve American Indian health in California to the highest level by engaging American Indian communities in collecting and interpreting health information to establish health priorities, monitor health status, and develop effective public health services that respect cultural values and traditions of the communities.



CTEC Staff

- 🍷 Kristal Chichlowska, PhD, MPH, Director (Colville/Spokane)
- 🍷 Thomas Kim, MD, MPH, Medical Epidemiologist
- 🍷 Richelle Harklerode, MPH, Epidemiologist
- 🍷 Aley Joseph, MPH, MS, Epidemiologist
- 🍷 Virginia Hedrick, Outreach Coordinator (Yurok/Karuk)
- 🍷 Luana Hill, Research Assistant(Dakota/Assiniboine/Paiute)
- 🍷 Ryan Saelee, CDC Public Health Associate
- 🍷 Crystal Blue, Research Associate (Miwok)

CTEC Model





CTEC Member IHP

-
1. Central Valley Indian Health, Inc.
 2. Chapa De Indian Health
 3. Consolidated Tribal Health
 4. Feather River Tribal Health, Inc
 5. Greenville Rancheria Tribal Health
 6. Riverside San Bernardino County Indian Health
 7. Indian Health Center, Santa Clara
 8. Indian Health Council, Inc.
 9. Karuk Tribal Health Program
 10. K'ima:w Medical Center
 11. Lake County Tribal Health
 12. MACT Health Board, Inc.
 13. Mathiesen Memorial
 14. Northern Valley Indian Health, Inc.
 15. Pit River Health Service, Inc.
 16. Redding Rancheria Indian Health Service
 17. Round Valley Indian Health
 18. Santa Ynez Tribal Health Program
 19. Sonoma County Indian Health
 20. Toiyabe Indian Health Project, Inc.
 21. Tule River Indian Health Center
 22. United Indian Health Services
 23. Warner Mountain Indian Health



CTEC Advisory Council

- 🍲 10 members
 - 🥥 3 Community Representatives
 - 🥥 3 Provider Representatives
 - 🥥 3 Technical Representatives
 - 🥥 1 Urban Indian Health Representative
- 🍲 Meeting Quarterly, annually face to face



What is Epidemiology?

- 👉 The study of how often diseases and health issues occur in different groups of people, and why.

- 👉 Examples of epidemiology include:
 - 👉 Prevalence of asthma (24% in AIs; 15% in Whites)
 - 👉 1950: First study linking smoking to lung cancer



What We Do

- 🍲 Collect and disseminate data
 - 🌱 Provide analysis of health data
- 🍲 Area/Tribal specific health status report
 - 🌱 Community Health Profiles
- 🍲 Improve surveillance databases –linkage studies
- 🍲 Conduct epidemiologic studies
- 🍲 Support public health emergency response
- 🍲 Assist Tribes in disease control and prevention
- 🍲 Provide technical assistance

Partner with Tribes, state, federal and academia:



- 🍲 Work together to improve AIAN health
- 🍲 Ensure data is accurate and reliable
- 🍲 Increase utility/quality of health reports
- 🍲 Makes efficient use of limited resources
- 🍲 Increased capacity to serve AIAN tribes and IHPs



Highlighted Projects

- 🍲 Tribal Behavioral Risk Factor Surveillance Survey
- 🍲 Indian Health Priorities Survey
- 🍲 Breast Cancer Training Grant
- 🍲 Linkage Studies
- 🍲 Native Oral Health Project



CA Tribal BRFSS

- 🍲 CTEC is using a tribally adapted Behavioral Risk Factor Surveillance Survey tool.
- 🍲 CTEC will be conducting the California Tribal BRFSS as a self administered survey.
- 🍲 Collecting surveys at community gatherings and events throughout California from 2012-2013.
 - 🌱 Participants must be AIAN, at least 18 years, and a California resident.
 - 🌱 Participants will receive \$20 gift card incentive.



Indian Health Priorities Survey



- 🍷 To determine if there has been a change in the health problems of concern, we conduct the Indian Health Priorities Survey every two years.
- 🍷 Survey is available online, as a fillable PDF, as well as a paper version.
- 🍷 Leaders and THP directors have been asked to encourage community members and staff to fill surveys.
- 🍷 To date we have received over 250 surveys.



Breast Cancer Research Grant

🍷 Purpose of Study:

- 🍷 To better understand the individual, community, and health system-level factors that prevent AIAN women from receiving mammograms.



State Data Linkage Projects



- 🍲 To explore racial misclassification in CA state data
- 🍲 Linking CA state data with the IHS Patient Registry
 - 🥥 Sexually Transmitted Diseases (STDs)
 - 🥥 Suicide related injuries and deaths



Native Oral Health Project

(Funded by the National Institute of Dental and Craniofacial Research, NIH)

Health issue:

-  In California, cavities & tooth decay among American Indian/ Alaskan Native (AIAN) children 1-5 years is the **highest** of all racial groups surveyed.
-  **47%** of Native children surveyed in California were found to have ever experienced tooth decay.
(California Dental Support Center)

Health Issue

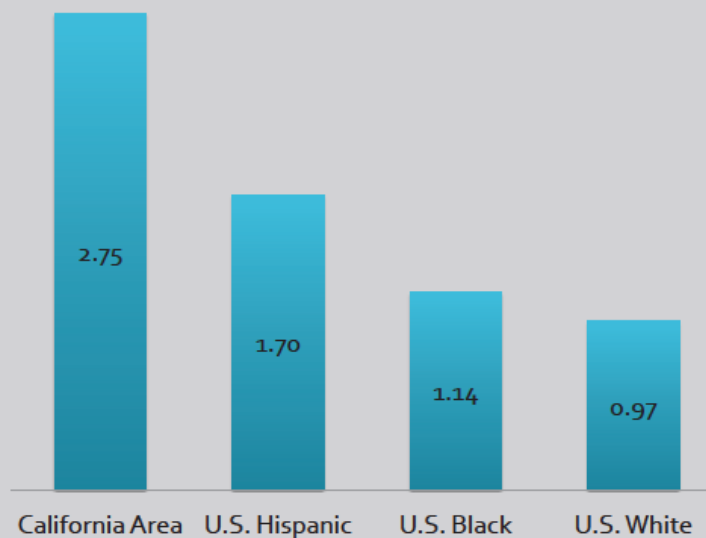


Key Finding #4

AI/AN children continue to have more decay than other minority populations in the United States.

As depicted in the graph, AI/AN preschool children have the highest level of tooth decay of any population group in the US; about 3 times higher than white children.

Mean Number of Decayed Teeth Among 2-5 Year Olds



Results from the 2010 Indian Health Service Basic Screening Survey, conducted in California, compared to nationwide decay rates among pre-school children.



Native Oral Health Project

- 🍲 **Purpose of Study:** To assess feasibility and acceptability of a *storytelling intervention* among AIAN mothers of young children & mothers-to-be.
- 🍲 **3 study phases**
 - 🌱 Phase A: AIAN storytellers will give us feedback on the story

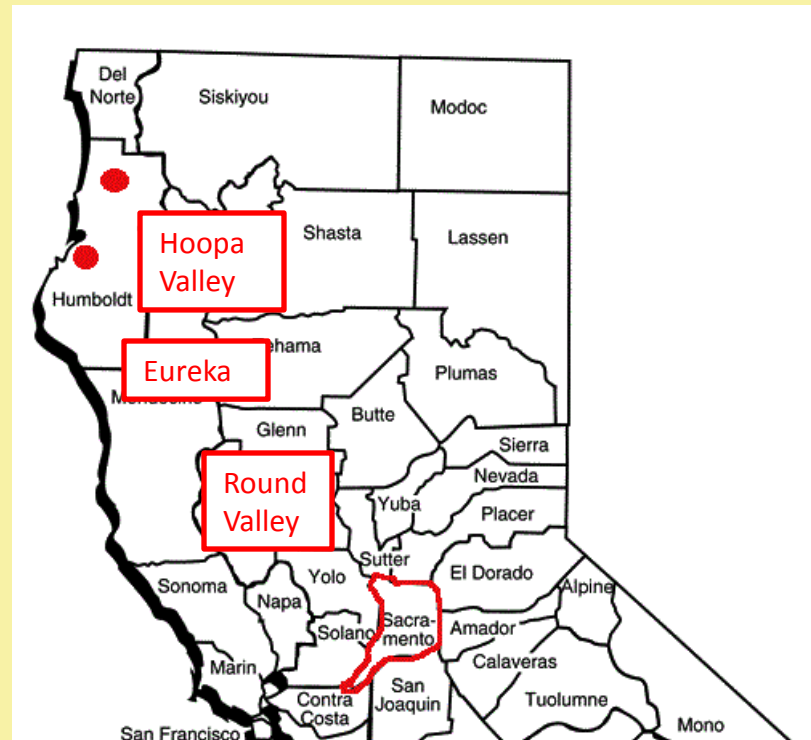




Native Oral Health Project

- Phase B: Focus group with AIAN women to gain further feedback about the story
- Phase C: storytelling sessions with AIAN women; participants will answer two surveys and participate in a focus group. They will answer a final survey 6 months later.

Partnerships with Head Start Centers in Hoopa, Eureka and Round Valley





Native Oral Health Project



- 👉 The study protocol has been approved by the funding agency and now is awaiting CRIHB IRB approval
- 👉 **A Community Advisory Board** provides input on a regular basis





Reports and Products

- 🍽 Data Reports
- 🍽 Community Health Profiles
- 🍽 Methods and Technical Reports
- 🍽 Fact Sheets

<http://crihb.org/ctec/reports.html>



CALIFORNIA TRIBAL EPIDEMIOLOGY CENTER

CALIFORNIA RURAL INDIAN HEALTH BOARD, INC. 1969



**Wohl-thou
Thank You!**

Virginia Hedrick
virginia.hedrick@crihb.org
(916) 929-9761 ex. 1602