

PART I - INDIAN HEALTH SERVICE STRUCTURE

Chart 1.1
Indian Health Service

The Indian Health Service is composed of 12 regional administrative units called Area Offices. Some of the health programs are operated by Tribes, and there are a limited number of projects to serve Indians living in urban areas.

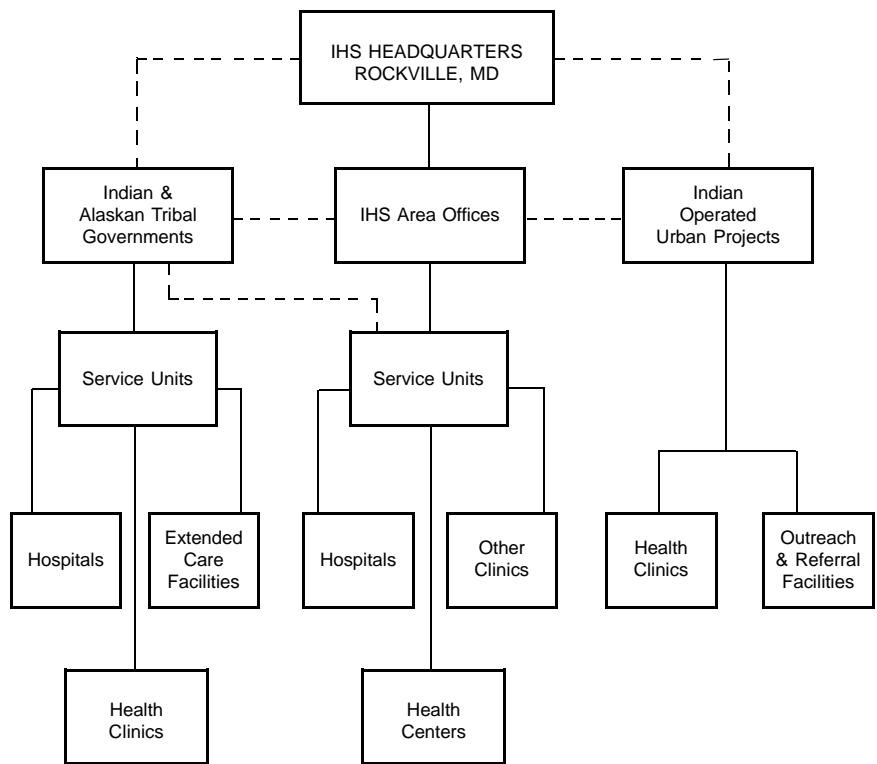


Chart 1.2
Indian Health Service
Area Offices

There were 68 Indian Health Service-operated service units that administered 38 hospitals and 112 health centers, school health centers, and health stations as of October 1, 1995.

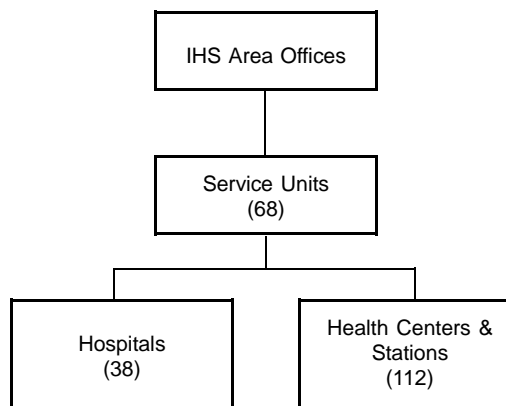




Chart 1.3
Indian and Alaska Native Tribal Governments

There were 76 Tribally operated service units that administered 11 hospitals and 372 health centers, school health centers, health stations, and Alaska village clinics as of October 1, 1995.

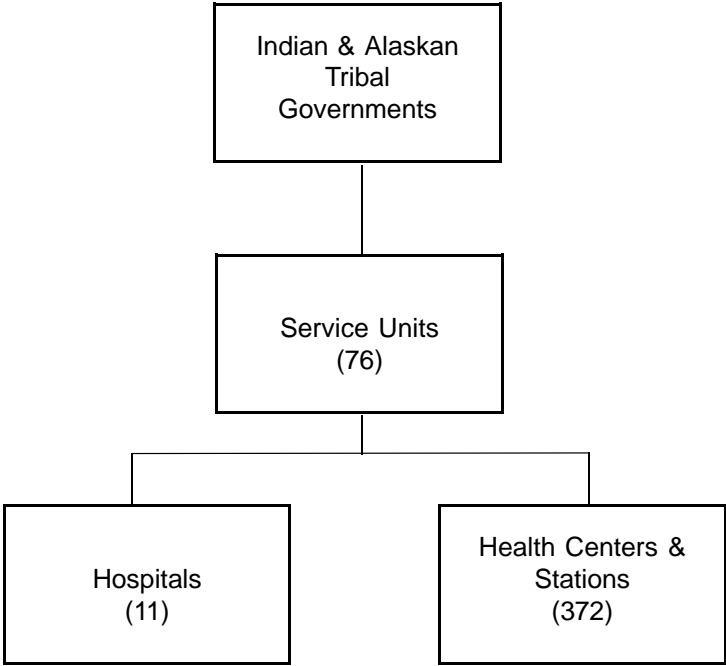


Chart 1.4
Indian-Operated Urban Projects

There were 34 Indian-operated Urban Projects as of October 1, 1995. The Urban programs range from information referral and community health services to comprehensive primary health care services.

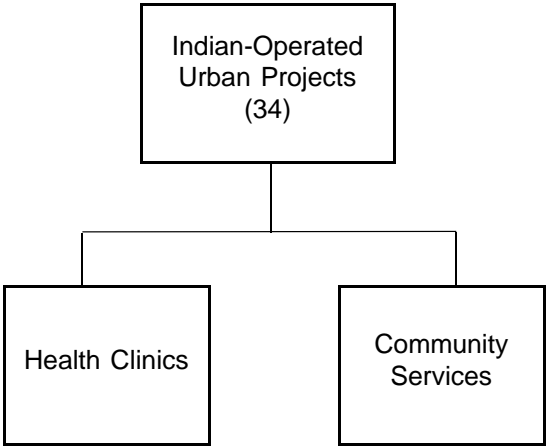


Chart 1.5
Number of Facilities
Operated by Indian Health
Service and Tribes as of
October 1, 1995

Indian Health Service operated 38 hospitals, 61 health centers, 4 school health centers, and 47 health stations as of October 1, 1995. Tribes can operate a facility under a P.L. 93-638 self-determination contract (Title I) or self-governance compact (Title III). Tribes operated 11 hospitals (Title I, 2 hospitals and Title III, 9 hospitals), 129 health centers (Title I, 88 and Title III, 41), 3 school health centers (Title I, 2 and Title III, 1), 73 health stations (Title I, 60 and Title III, 13), and 167 Alaska village clinics (Title I, 14 and Title III, 153).

Type of Facility	Total	IHS	Tribal		
			Total	I	III
Hospitals	49	38	11	2	9
Ambulatory Facilities	484	112	372	164	208
Health Centers	190	61	129	88	41
School Health Centers	7	4	3	2	1
Health Stations	120	47	73	60	13
Alaska Village Clinics	167	--	167	14	153

I - operated under Title I, P.L. 93-638 Self-Determination Contracts
 III - operated under Title III, P.L. 93-638 Self-Governance Compacts

Chart 1.6
Trend in Indian Health
Service Budget

The Indian Health Service budget (appropriations and collections) has increased 121 percent from FY 1987 to FY 1996. However, in constant 1995 dollars, the budget has only increased 24 percent.

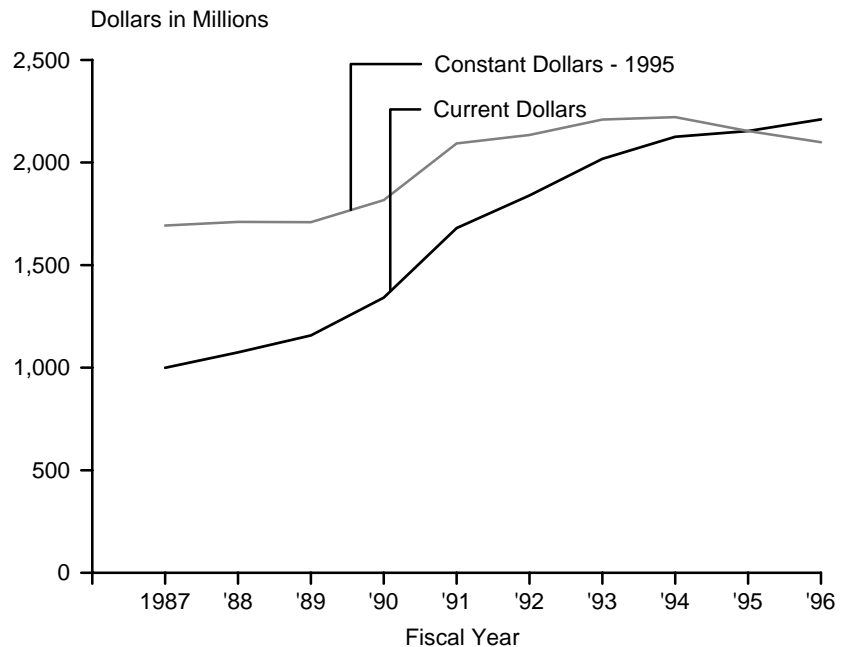


Table 1.6
Trend in Indian Health Service Budget

(Dollars in Thousands)

Category	FY 1987	FY 1988	FY 1989	FY 1990	FY 1991	FY 1992	FY 1993	FY 1994	FY 1995	FY 1996
Clinical Services	747,526	816,729	883,088	1,031,072	1,235,481	1,276,185	1,251,660	1,325,462	1,370,421	1,417,641
Preventive Health Services	66,331	70,110	73,471	77,630	89,978	64,951	70,011	74,464	77,032	78,018
Other Services										
Urban Health	9,000	9,624	9,962	13,049	15,687	17,195	20,965	22,834	23,349	23,360
Indian Health Professions	7,018	7,646	8,115	9,540	13,380	19,205	26,092	27,406	27,479	26,271
Tribal Management	2,709	3,094	3,218	2,562	4,235	5,038	5,161	5,285	5,048	2,348
Direct Operations	37,111	39,104	42,471	44,484	52,406	49,029	48,659	49,471	49,709	49,260
Self Governance	—	—	—	—	—	—	1,884	4,980	8,594	9,104
Contract Support Cost	—	—	—	—	—	—	100,558	136,186	145,460	154,840
Sub-Total Other	55,838	59,468	63,766	69,635	85,708	90,467	203,319	246,162	259,639	265,183
Total Services	869,695	946,307	1,020,325	1,178,337	1,411,167	1,431,603	1,524,990	1,646,088	1,707,092	1,760,842
Facilities	71,055	62,511	61,668	71,633	166,402	274,351	333,640	296,982	252,982	238,958
TOTAL SERVICES & FACILITIES ¹	940,750	1,008,818	1,081,993	1,249,970	1,577,569	1,705,954	1,858,630	1,943,070	1,960,074	1,999,800
Medicare/Medicaid Collections	58,287	66,126	75,019	88,097	94,301	121,628	140,805	159,605	162,066	² 176,536
Private Insurance Collections	—	—	—	3,500	8,326	12,350	18,184	22,700	31,233	² 33,784
TOTAL IHS ³ - CURRENT \$s	999,037	1,074,944	1,157,012	1,341,567	1,680,196	1,839,932	2,017,619	2,125,375	2,153,373	2,210,120
TOTAL IHS ³ - CONSTANT \$s ⁴	1,693,218	1,710,138	1,708,782	1,817,049	2,093,126	2,134,166	2,208,962	2,221,067	2,153,373	2,098,879

¹ Total IHS appropriations.

² Estimated collections.

³ Total dollars available to spend.

⁴ Constant 1995 dollars based on consumer price index for medical care, 1986-95, and 1996 budget inflation factor of 5.3 percent.

Chart 1.7
Accreditation Status of Selected Health Facilities, January 1, 1996

As of January 1, 1996, all hospitals and eligible health centers were accredited by the Joint Commission on Accreditation of Healthcare Organizations. Since 1990, 6 of 9 Regional Youth Treatment Centers have become accredited, and the remaining 3 are preparing for accreditation.

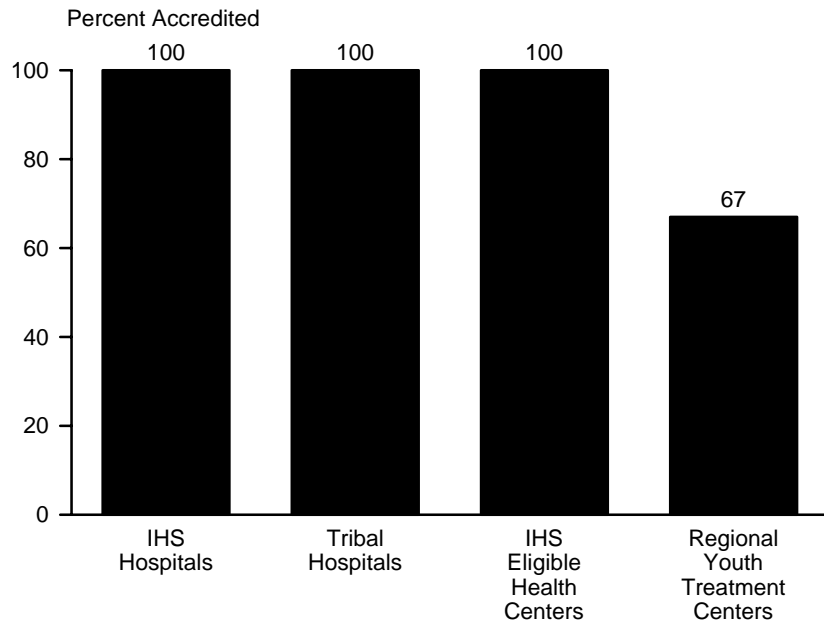


Table 1.7
Accreditation Status of Hospitals, Health Centers, and Regional Youth Treatment Centers, January 1, 1996

Type of Facility	Total	Accredited ¹	Not Accredited	Percent Accredited
IHS Hospitals	38	38	0	100
Tribal Hospitals	11	11	0	100
IHS Eligible Health Centers	² 57	57	0	100
Regional Youth Treatment Centers ³	9	⁴ 6	3	67

¹ Accredited by the Joint Commission on the Accreditation of Healthcare Organizations (JCAHO).

² Excludes health centers not eligible for accreditation survey and those under Tribal management pursuant to P.L. 93-638.

³ Provide alcohol and substance abuse treatment.

⁴ Includes 3 facilities accredited by JCAHO and 3 facilities accredited by the Commission on Accreditation of Rehabilitation Facilities.

Chart 1.8
Accreditation Status of Indian Health Service Laboratories

Ninety-eight percent of health center laboratories and 100 percent of hospital laboratories operated by the Indian Health Service were accredited as of January 1, 1996.

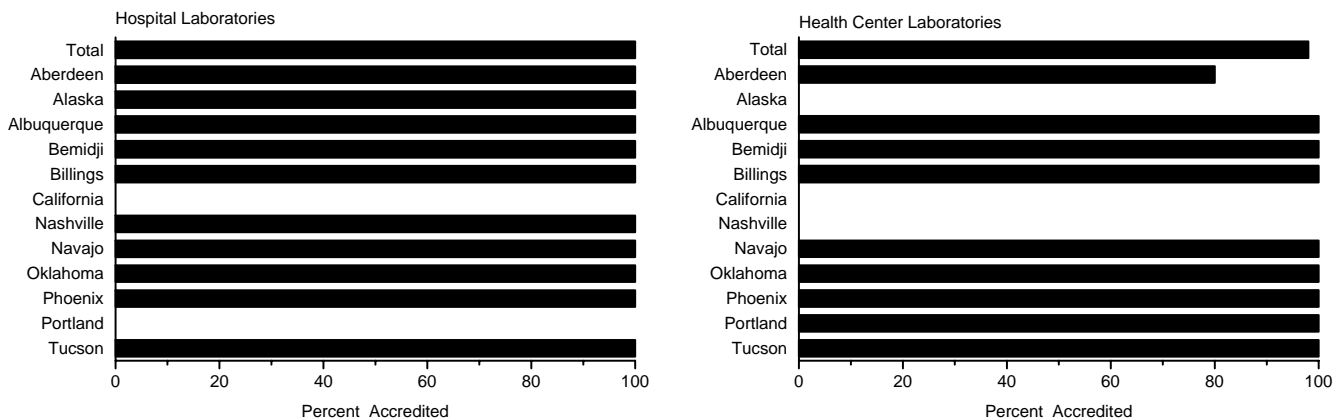


Table 1.8
Indian Health Service Laboratory Accreditation Status, January 1, 1996

Area	IHS Hospital Laboratories					IHS Health Center Laboratories				
	Total	Accredited ¹	Not Accredited	Percent Accredited	Percent in Proficiency Testing Program ²	Total	Accredited ¹	Not Accredited	Percent Accredited	Percent in Proficiency Testing Program ²
All Areas	38	38	0	100	100	49	48	1	98	100
Aberdeen	8	8	0	100	100	5	4	1	80	100
Alaska	2	2	0	100	100	—	—	—	—	—
Albuquerque	5	5	0	100	100	5	5	0	100	100
Bemidji	2	2	0	100	100	1	1	0	100	100
Billings	3	3	0	100	100	6	6	0	100	100
California	—	—	—	—	—	—	—	—	—	—
Nashville	1	1	0	100	100	—	—	—	—	—
Navajo	6	6	0	100	100	5	5	0	100	100
Oklahoma	4	4	0	100	100	11	11	0	100	100
Phoenix	6	6	0	100	100	3	3	0	100	100
Portland	—	—	—	—	—	11	11	0	100	100
Tucson	1	1	0	100	100	2	2	0	100	100

¹ Laboratories hold a certificate of accreditation from the College of American Pathologists, the Joint Commission on the Accreditation of Healthcare Organizations, or the Health Care Financing Administration as mandated under the Clinical Laboratory Improvement Amendments (CLIA) of 1988. Excludes laboratories under Tribal management pursuant to P.L. 93-638.

² Laboratories participating in the College of American Pathologists (CAP) national proficiency testing program.

Chart 1.9
Proficiency Rating for
Indian Health Service
Laboratory Services, 1995

IHS proficiency testing rating exceeded the requirements of the Clinical Laboratory Improvement Amendments of 1988 (CLIA '88) for all private and public sector laboratories. Overall proficiency rating for IHS laboratories is 98 percent. CLIA '88 requires 80 percent proficiency on all regulated analytes.

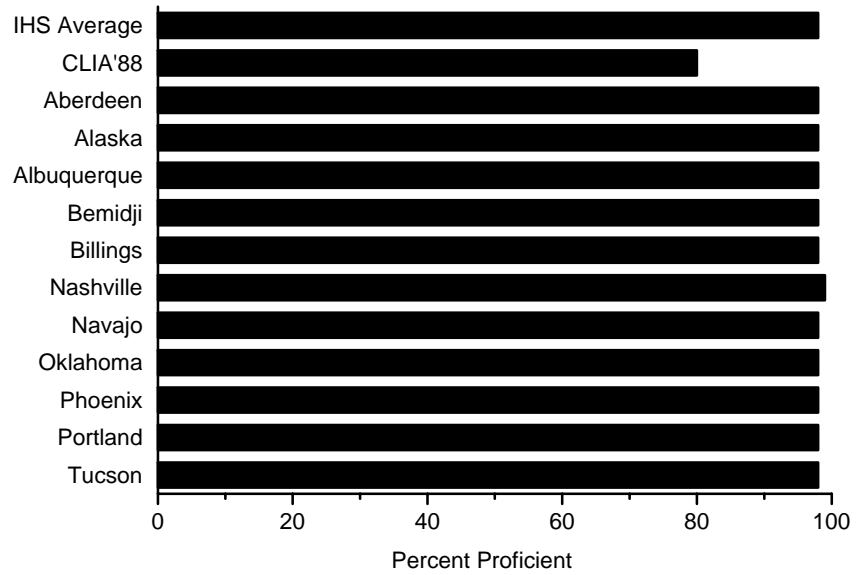


Table 1.9
Proficiency Rating for
Indian Health Service
Laboratory Services, 1995

Area	Percent Proficient
IHS Average	98
CLIA '88 ¹	80
Aberdeen	98
Alaska	98
Albuquerque	98
Bemidji	98
Billings	98
Nashville	99
Navajo	98
Oklahoma	98
Phoenix	98
Portland	98
Tucson	98

¹ Proficiency level required by Clinical Laboratory Improvement Amendments (CLIA) of 1988.



Chart 1.10
Outpatient Prescriptions Filled per Pharmacist, Indian Health Service and Tribal Direct Facilities, FY 1995

The average number of outpatient prescriptions filled per pharmacist at Indian Health Service and Tribal direct facilities in FY 1995 was 13,300. There was a wide variability among the Areas, ranging from 7,595 in Nashville to 23,310 in Navajo.

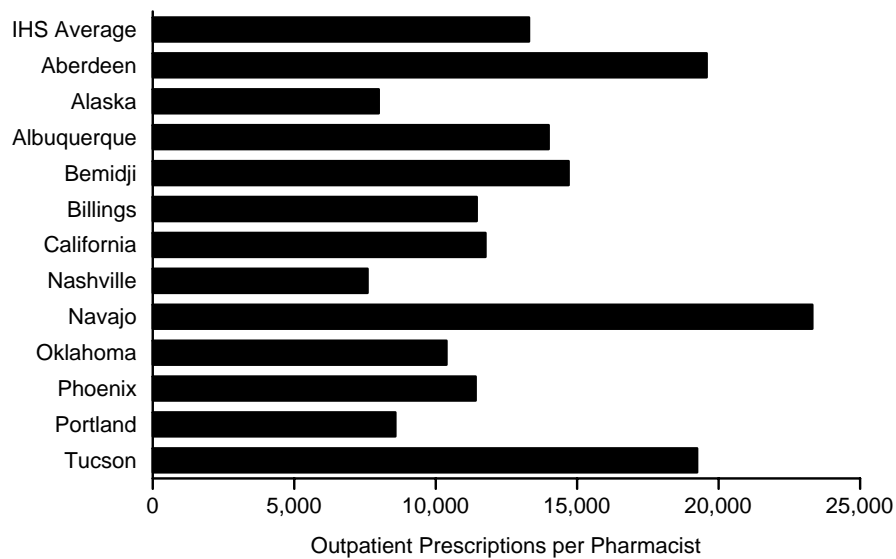


Table 1.10
Outpatient Prescriptions Filled per Pharmacist, Indian Health Service and Tribal Direct Facilities, FY 1995

Area	Number of Outpatient Prescriptions Filled	Number of Pharmacists	Prescriptions Filled per Pharmacist
All Areas	6,889,243	518	13,300
Aberdeen	1,017,977	52	19,576
Alaska	423,188	53	7,985
Albuquerque	531,809	38	13,995
Bemidji	514,564	35	14,702
Billings	343,548	30	11,452
California	211,725	18	11,763
Nashville	197,457	26	7,595
Navajo	1,538,430	66	23,310
Oklahoma	975,981	94	10,383
Phoenix	650,477	57	11,412
Portland	368,630	43	8,573
Tucson	115,457	6	19,243

Chart 1.11
Pharmacy Workload by
Type of Activity, Indian
Health Service and
Tribal Direct Facilities,
FY 1995

Over 61 percent of pharmacy workload at Indian Health Service and Tribal direct facilities in FY 1995 was associated with outpatient activities, followed by clinical support activities at 19 percent.

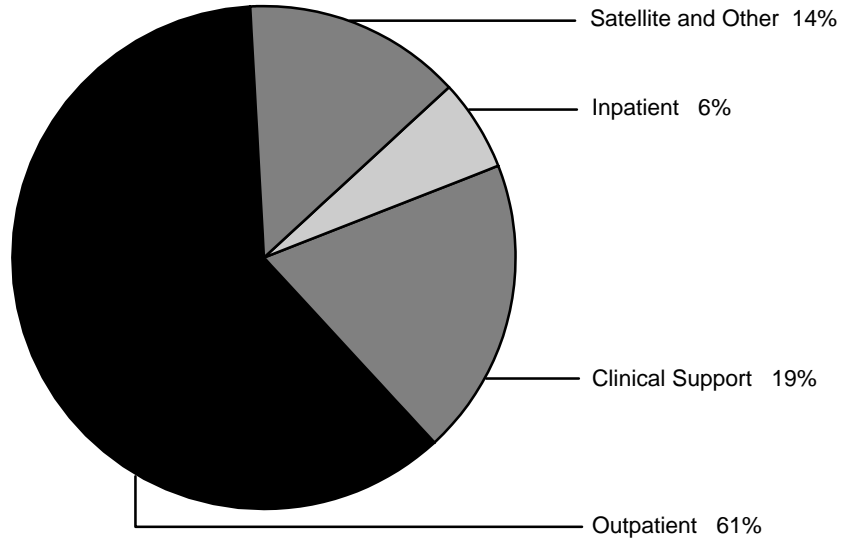


Table 1.11
Pharmacy Workload by
Type of Activity, Indian
Health Service and
Tribal Direct Facilities,
FY 1995

Type of Activity	Workload Units	Percent of Total
Total	96,805,303	100.0
Outpatient	59,435,251	61.4
Clinical Support	18,186,552	18.8
Inpatient	6,213,147	6.4
Satellite	1,218,622	1.3
Other	11,751,731	12.1

Chart 1.12
Ambulatory Medical
Visits per Pharmacist,
Indian Health Service
and Tribal Direct
Facilities, FY 1995

The average number of ambulatory medical visits per pharmacist at Indian Health Service and Tribal direct facilities in FY 1995 was 11,720. There was a wide variability among the Areas, ranging from 8,835 in Portland to 15,553 in California.

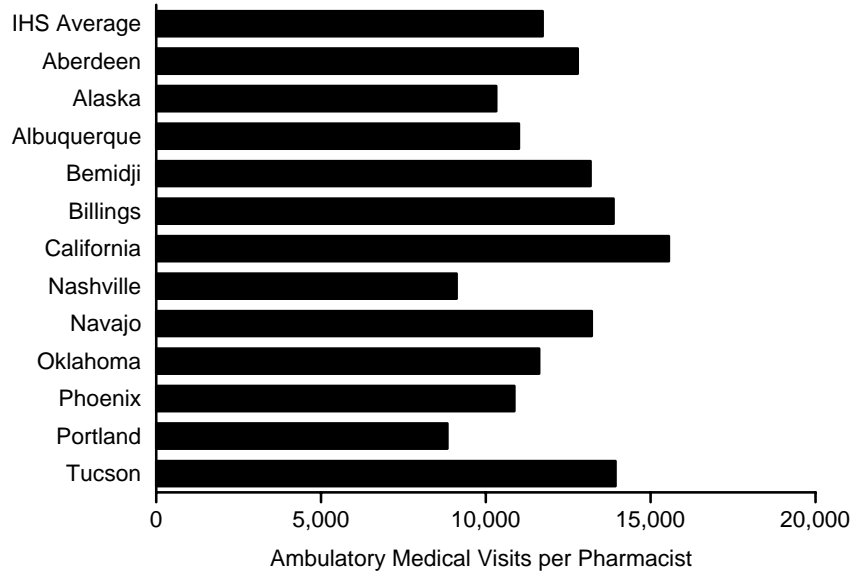


Table 1.12
Ambulatory Medical
Visits per Pharmacist,
Indian Health Service
and Tribal Direct
Facilities, FY 1995

Areas	Number of Ambulatory Medical Visits	Number of Pharmacists	Visits per Pharmacist
All Areas	6,071,006	518	11,720
Aberdeen	664,914	52	12,787
Alaska	546,807	53	10,317
Albuquerque	418,079	38	11,002
Bemidji	461,170	35	13,176
Billings	461,140	30	13,871
California	279,959	18	15,553
Nashville	236,899	26	9,112
Navajo	872,182	66	13,215
Oklahoma	1,092,153	94	11,619
Phoenix	619,203	57	10,863
Portland	379,903	43	8,835
Tucson	83,597	6	13,933