



2012 CA Area IHS Immunization Program Update

CA Area Program Directors' Meeting
November 14, 2012

Susan Ducore RN, BSN, MSN
Nurse Consultant/Immunization Program Coordinator
IHS/California Area Office
(916)-930-3927
susan.ducore@ihs.gov



Overview

- Influenza Vaccine Coverage
- Childhood Immunizations
- Health Care Personnel (HCP) Immunization
- Adult Immunization
- Adolescent Immunization

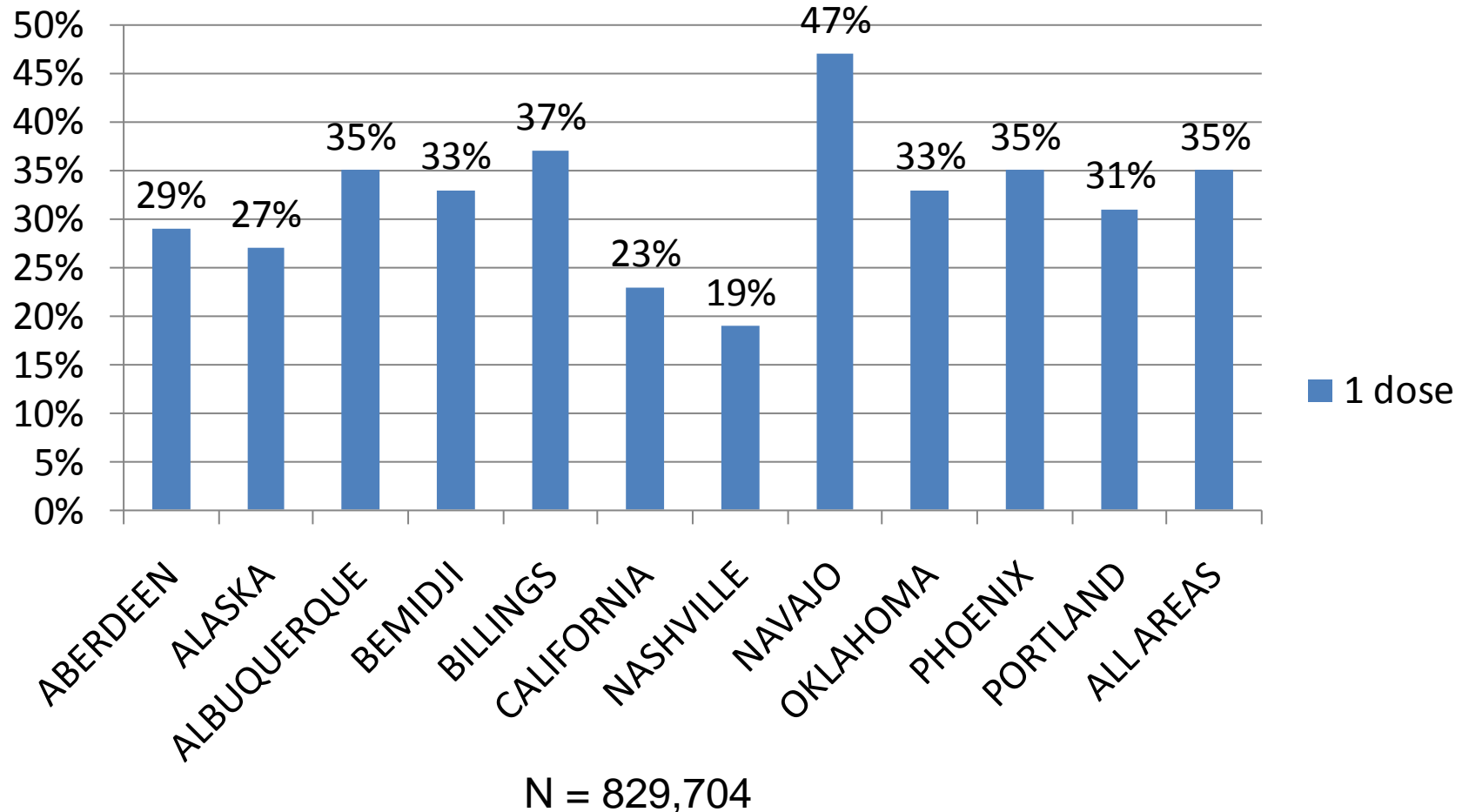
Background

- American Indian/Alaska Native (AI/AN) people are at higher risk for influenza-related complications compared to U.S. Whites:
 - Pneumonia and influenza-related mortality 1.5 to 4 times higher ¹
 - Mortality from 2009 H1N1 influenza 4 times higher ²
- 2010-2011 ACIP Influenza Vaccine recommendations
 - AI/AN people as a high risk group

1. IHS. Trends in Indian Health 2002-2003. Available at: <http://www.ihs.gov>

2. CDC. MMWR 2009;58:1341-4.

2010-2011 Influenza Vaccine Coverage All Ages, by IHS Region



Source: IHS Division of Epidemiology and Disease Prevention. Data as of March 31st, 2011



Influenza Vaccine Coverage

- GPRA Measure for 2013
 - Age Cohort: 65+ years
- 2012 IHS National Target 63.4%
 - National Actual: **65 % *Met***
 - CA Area Actual: **54.9 % *Not Met***



Influenza Vaccine Coverage Trends

- **Influenza vaccine coverage among AI/AN patients served by I/T/U facilities was nearly the same over the past two seasons**
 - Differences in methodology (administered vs. self-report) may account for some of this
 - Low coverage among 65+ years a concern
- **Considerable regional variation in flu coverage**
 - Geographic/population differences

Best Practices

- Review the data
 - Influenza report in the RPMS Immunization Package
 - IHS Influenza Awareness System (IIAS) weekly reports
 - Influenza-like illness trends
 - Flu vaccine doses administered and coverage
- Utilize Reminder Recall



Pneumococcal Vaccine Coverage

- GPRA Measure for 2013
 - Age Cohort: 65+ years
- 2012 National GPRA Target 87.5 %
 - National Actual: **88.5 %** *Met*
 - CA Area Actual: **83.7 %** *Not Met*



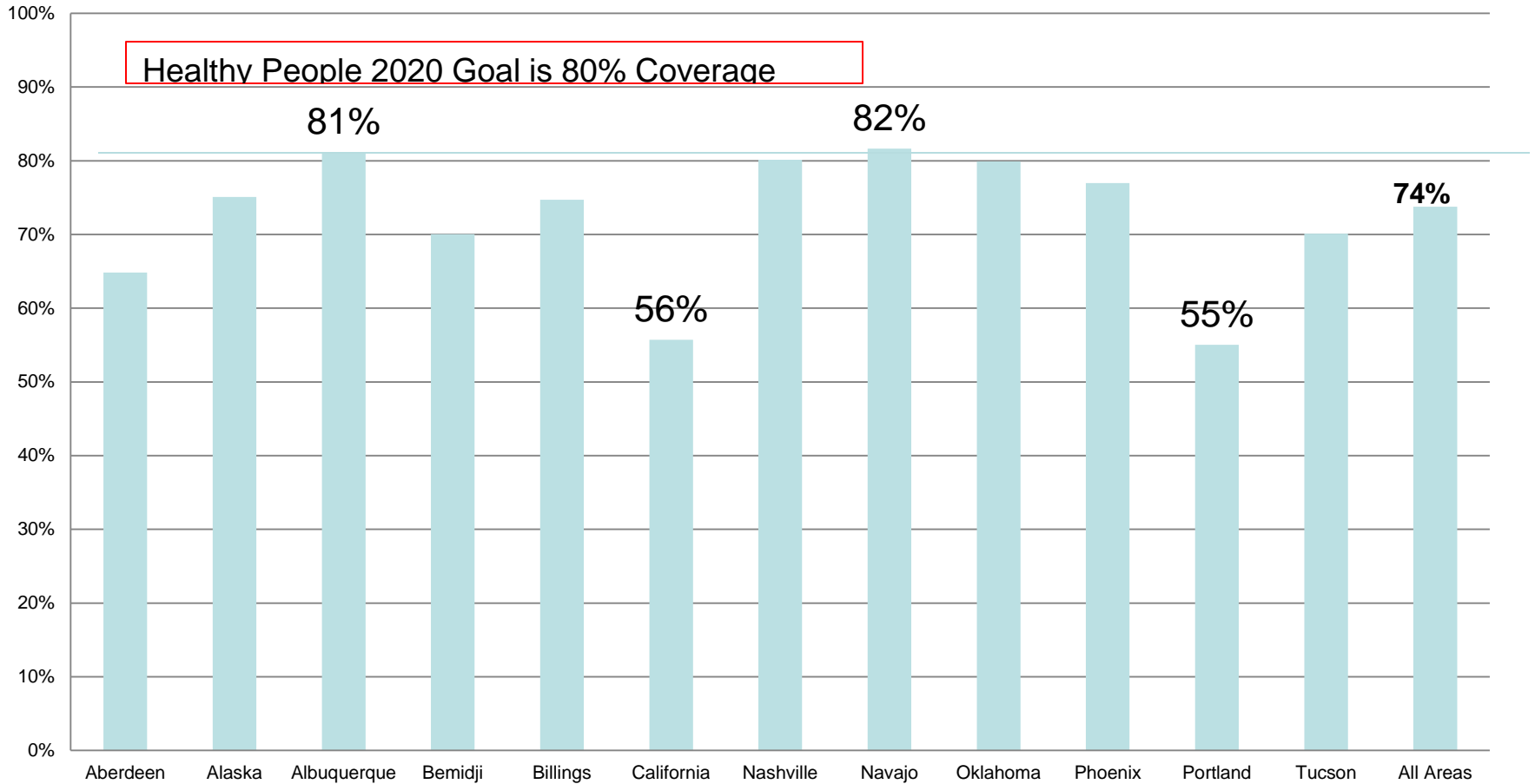
Childhood Immunizations

- A GPRAMA Measure for 2013
 - Age Cohort: 19-35 month
- National Target 77.8 %
 - National Actual: **76.8 %** *Not Met*
 - CA Area Actual: **71.3 %** *Not Met*
- FY 2013 MEASURE LOGIC CHANGES:
 - From 4:3:1:3:3:1:4 to Childhood Immunizations:
4313*314



Percent of 2 year olds With 4:3:1:3:3:1:4 Vaccine Coverage

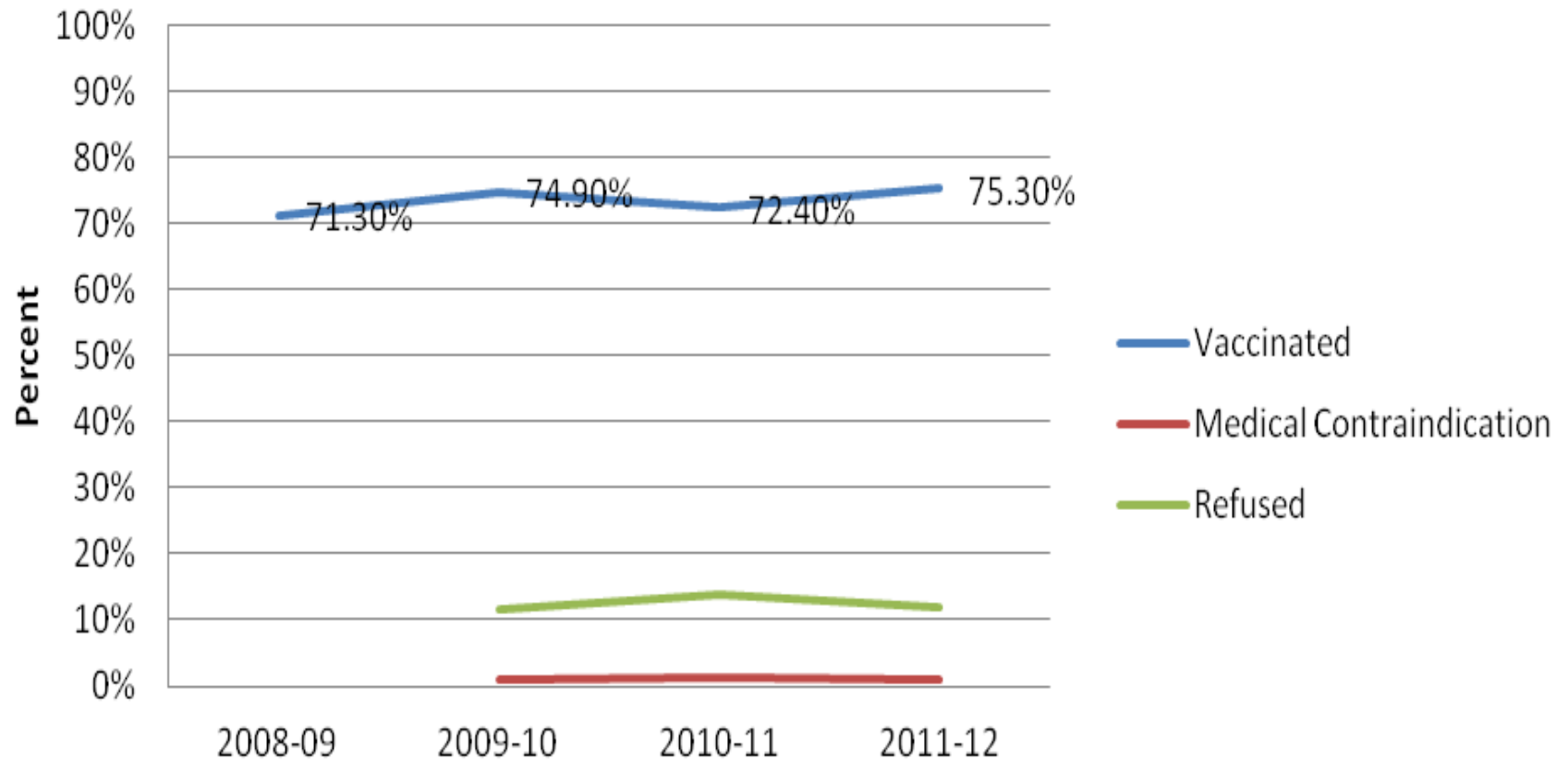
3rd quarter 2012



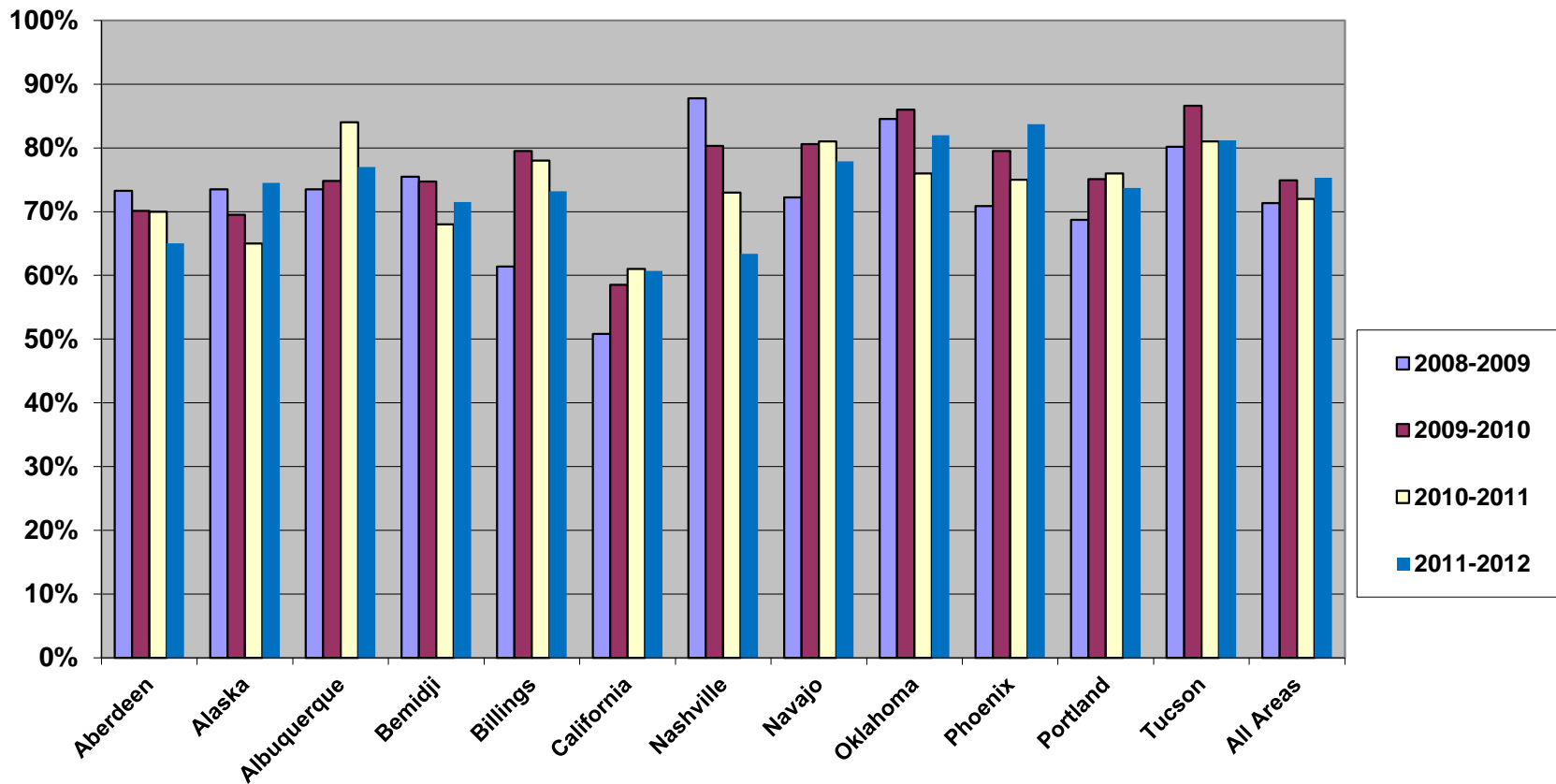
Health Care Personnel (HCP) Vaccination: Best Practice

- Strong HCP recommendations
 - Require vaccination or declination form
 - Administration supportive
 - Recommendations widely published for staff
- Vaccine accessible
 - Employee vaccine clinics
- **HCP Influenza Vaccine Requirement**
 - Tuba City

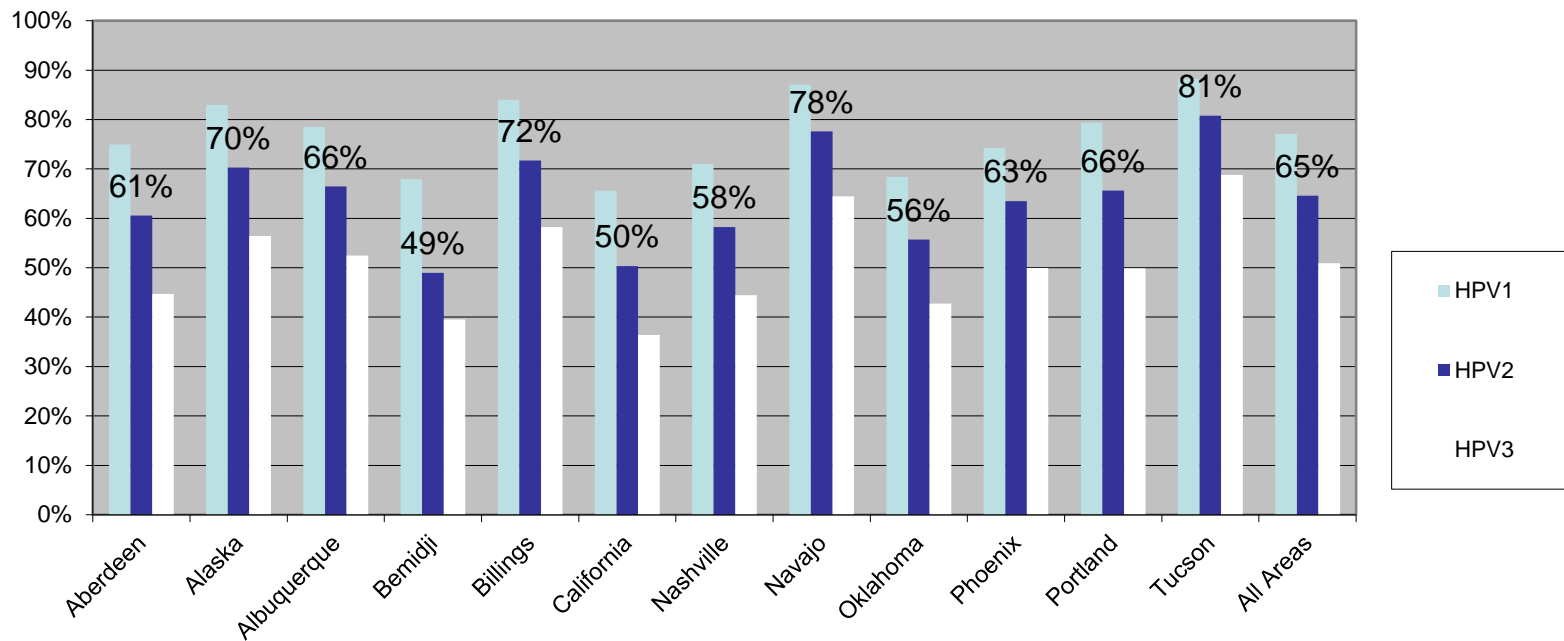
Healthcare Personnel Seasonal Influenza Vaccine Coverage 2008 - 2012*



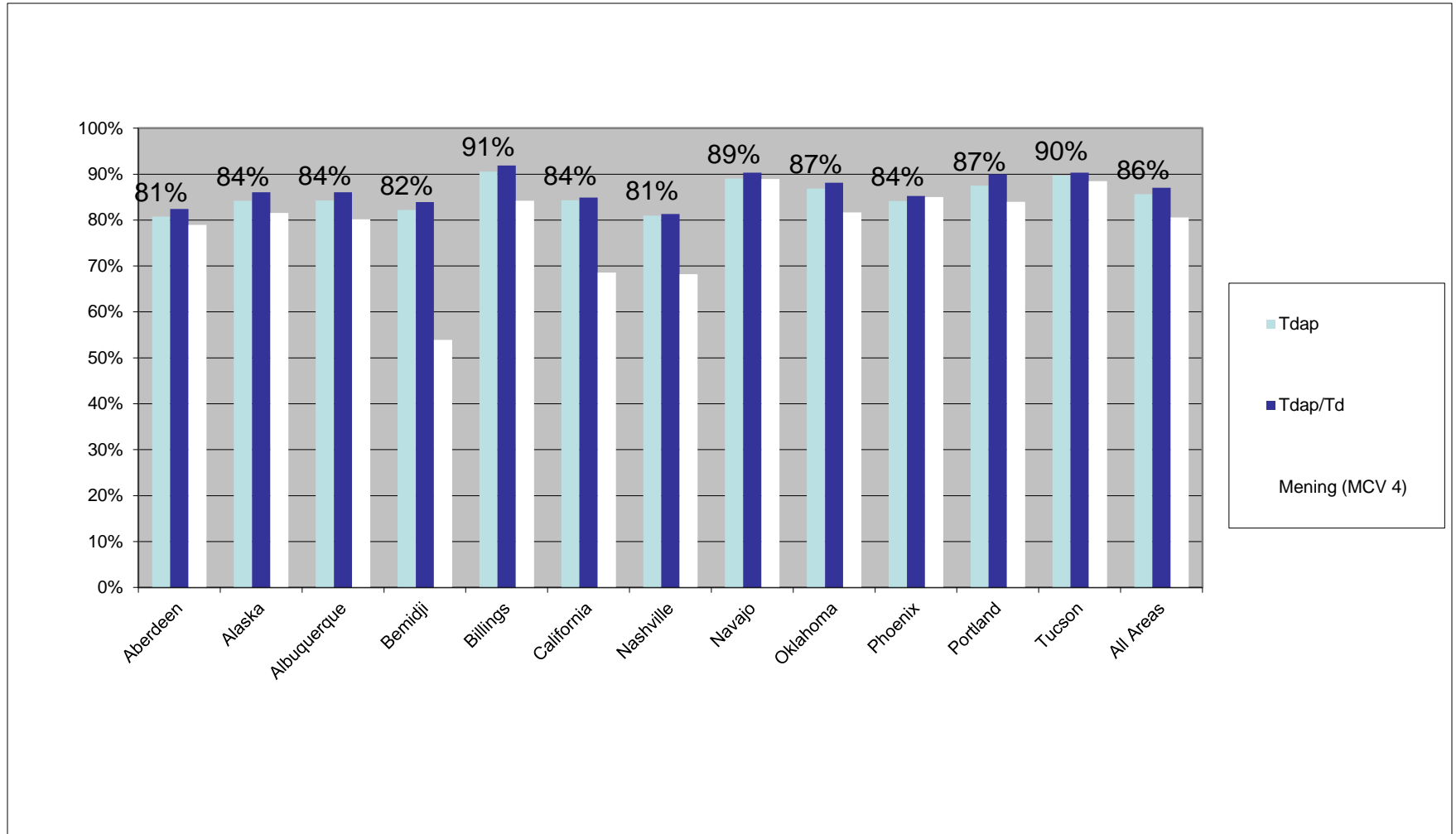
**Figure 2: Seasonal Influenza Vaccination Coverage of HCP by IHS Area
IHS, Tribal, and Urban Facilities**



HPV Coverage for 13-17 Year Old Females



Tdap and Mening Coverage for 13 year olds



Recommended Strategies

- **Targeted Staff Education:**
 - Clinical Directors
 - Immunization Coordinators
 - Outreach/ Community Health Staff
 - All-Clinic Staff
 - IT and Data Entry Staff
- **Tools and Training:**
 - Immunization protocols
 - Screening Forms
 - Documentation and Coding
- Targeted Patient Education
- Avoid “Missed Opportunities”
- Coordinated, Multi-disciplinary Effort
- Communicate!

Local Best Practices

- **Increase Access to Vaccine**

- Walk in flu clinics/
- Streamlined registration
- Extended clinic hours, weekends/evenings
- Clinics at frequently-visited community locations
- Hire additional staff/overtime authorization
- Pharmacist immunizers
- Flu immunization protocols and standing orders

- **Vaccine Promotion**

- Local radio, newspapers, tribal newsletters
- Community education (PHNs, CHRs)

Immunization Partnerships

- January 2012 – IHS/CAO partnered with California Automated Immunization Registry (CAIR), California Department of Public Health Immunization Branch, and IHS Division of Epidemiology on uni-directional immunization data exchange project:
 - Sonoma County Indian Health Program (Initial Pilot Site, Beta Tester for RPMS Immunization Exchange Interface)
 - Riverside/San Bernardino Indian Health Program (development phase)

Immunization Partnerships

- October 2012 – IHS/CAO partnered with Sacramento Native American Health Center to offer an on-site, two hour “flu” vaccination clinic for Area staff
- October 2012 - IHS/CAO sponsored and partnered with the following four CA Area Tribal Health Programs to provide Immunization Performance Improvement Training for staff:
 - Karuk Tribe of California
 - Northern Valley Indian Health, Inc.
 - Riverside/ San Bernardino County Indian Health
 - Sonoma County Indian Health

Immunization Partnerships

Ongoing for 3 + years: Bi-directional exchange of RPMS Immunization data with San Diego Immunization Registry (SDIR)

Southern Indian Health Council (Initial Pilot Site and sole San Diego County Indian Health Program site using this type of interface)

Congratulations!

• October 2011 - IHS/CAO sponsored two GPRA - Based Immunization Improvement Challenges for participation by CA Area Indian Health Programs. The following were awarded for their achievements:

- Central Valley Indian Health, Inc. (Childhood Immunizations)
- Indian Health Council, Inc. (Childhood Immunizations)*
- Northern Valley Indian Health (Childhood and Adult Immunizations)*
- Pit River Health Services, Inc. (Childhood Immunizations)*
- Round Valley Indian Health Center, Inc. (Childhood Immunizations)
- Lake County Tribal Health Consortium (Childhood and Adult Immunizations)*

* Overall top performers by size category

2012 California Area Office Immunization Outreach

- **Communication**

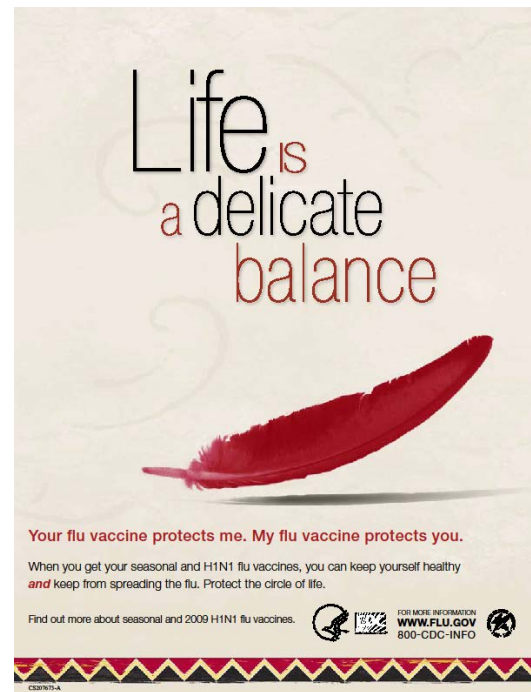
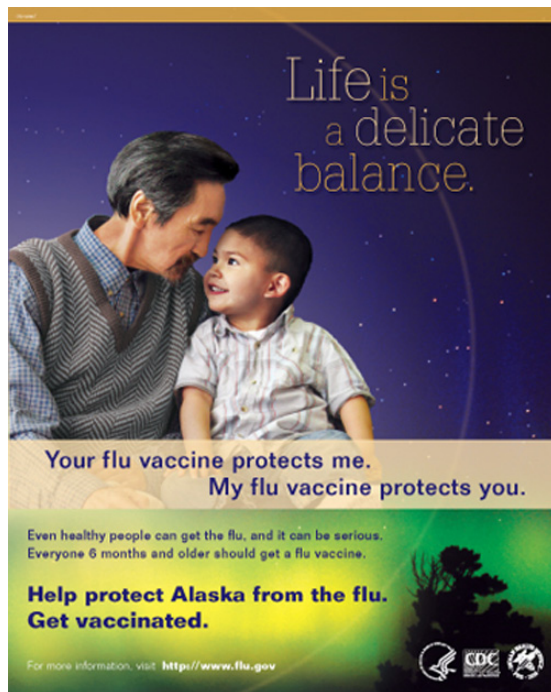
- Patient-Focused Quarterly Newsletters
- Area Director Website Messages

- **Training**

- Hosted RPMS Immunization Package Trainings
 - October 8, 2011
 - January 12, 2012
 - May 2013 - Projected
- Sponsored Multidisciplinary, Team-Based, Immunization Performance Improvement Trainings

Educational Materials – www.ihs.gov/flu

- Posters and Fact Sheets with AI/AN people
- Flu presentations for community members
- Tool Kits
 - Tribal Head Start/Early Childhood Education programs
 - Community Vaccination Guide



Efforts at all Levels

- Continue partnerships among national, state, local, tribal, private, and public entities:
 - Sustain current coverage levels
 - Increase coverage related to new vaccine recommendations



Next Steps

The AI/AN population is known to be at high risk for “flu” as well as other vaccine preventable diseases/ related complications!

- Explore reasons why people don't get vaccinated
- Target education and outreach efforts
- Review vaccine coverage data on all patients at each visit and more frequently if needed; immunize as appropriate.

2012 Immunization Program Update

CA Area Program Directors' Meeting
November 14, 2012

Susan Ducore RN, BSN, MSN
Nurse Consultant/Immunization Program Coordinator
IHS/California Area Office
(916)-930-3927
susan.ducore@ihs.gov