



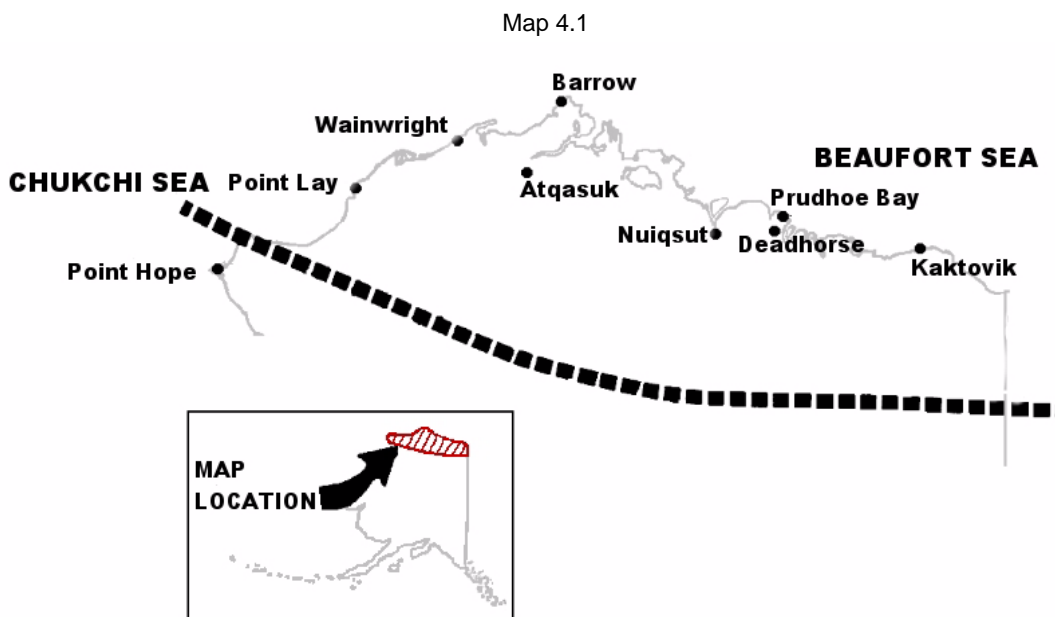
## OVERVIEW

### Alaska Native 2006 User Population.

<b>BARROW SERVICE AREA</b>	<b>4,389</b>
Arctic Slope Native Association	4,389

Users are defined as beneficiaries who used a facility that reports through the Indian Health Service data system at least once between 10/1/2003 and 9/30/2006.

**Environmental Factors.** The Barrow Service Area is the most northerly of the nine tribal service areas. It is bordered on the north by the Arctic Ocean, on the west by the Chukchi Sea, and on the northeast by the Beaufort Sea. The service area covers 95,366 square miles.



Alaska's arctic slope is underlain by continuous permafrost extending from a few inches below the land surface to depths ranging from 600 to 2,000 feet (190-600 m). Ice-wedge polygons, a common permafrost surface feature, lie throughout the coastal plain section.

Temperature extremes are 70 degrees F° above zero to minus 55 (with windchill factors below -100 degrees). Averages are 45 for summer and -30 in the winter. For 56 days during the winter, the sun does not come above the horizon. For 82 days in the summer, the sun does not set.

Barrow is the largest city of the service area. It is 330 miles above the Arctic Circle, 1,955 miles north of Seattle, 722 miles northwest of Anchorage, and 502 miles northwest of Fairbanks. Point Barrow, the northernmost point of the United States on the Arctic Plain, is 10 miles northeast of



Barrow. Located within the U.S. Naval Petroleum Reserve #4 (PET 4). The North Slope Borough, a local government under State statutes is headquarters in the City of Barrow.

**Utilities.** Water and sewer systems are available to an increasing number of homes in the Arctic Slope villages, but there are still 368 homes in the region without piped water and wastewater. Electricity and natural gas is available in all villages.

**Transportation.**

Transportation to and from the Arctic Slope is by commercial jet, and within the service area is by small carrier commercial air. Barrow has daily round-trip flights scheduled to Anchorage via Fairbanks. Barrow is a 2 hour 45 minute flight from Anchorage, a 4 hour 30 minute flight from Juneau, and a 5 hour 40 minute flight from Seattle. The villages have daily or weekly flight service scheduled to Barrow, weather permitting. The City of Barrow has a bus system and private taxis, but there are no roads between any of the Arctic Slope communities. For about six weeks during August and September, barges carrying fuel, building materials, furniture and supplies can reach the coastal villages. During the rest of the year, a solid icepack prevents sea travel. Snow machines can be used to travel between villages during the winter months.

**Housing.** A limited number of furnished Indian Health Service built apartments are available with one, two and three-bedroom units in Barrow. Visiting personnel can stay in transient quarters or several local hotels. There is very little private housing in Barrow.

**Education.** There are five K-12 schools in Arctic Slope villages, and one elementary, one middle and one high school in Barrow. The Ilisagvik College in Barrow offers associates degrees, and one-year certificates in a number of fields. It is the first tribally controlled college in Alaska.

**Natural Resources.** Although isolated by distance and climate from the rest of the state of Alaska, Barrow has achieved prominence as the regional center for business, communications, government and transportation in the Arctic Slope area. The economy of this region is heavily dependent on the oil industry.

Table 4.1

**Barrow Service Area  
Number of Homes With and Without Complete  
Water and Sewer Service<sup>1</sup>**

	# Homes With	# Homes Without	Total # of Homes <sup>2</sup>
<b>BARROW SERVICE UNIT TOTAL</b>	<b>368</b>	<b>0</b>	<b>368</b>
Arctic Slope Native Association	368	0	368

<sup>1</sup>Complete service means operable plumbed indoor water and sewer service. Information applies only to year-round primary homes, including individual homes, duplexes and apartment units. Data from FY 2002.  
Source: Alaska Area Native Health Service, Office of Environmental Health.

Table 4.2

**Barrow Service Area  
Education Status  
for the Population 25 Years and Over**

	Males	Females
<b>White Alone Population:</b>		
High school graduate (includes equivalency)	138	37
Bachelors degree or higher	199	212
<b>AI/AN* Alone population:</b>		
High school graduate (includes equivalency)	440	356
Bachelors degree or higher	26	41

\*AI/AN = American Indian/Alaska Native  
Source: U.S. Census Bureau, P148A, 148C Sex by educational attainment for the population 25 years and over, 2000 Census Summary File 3. Includes the communities of Atkasook, Barrow, Kaktovik, Nulqut, Point Lay and Wainwright.



**Employment.** The unemployment rate for the North Slope Borough is 15.7%.

**Federally Recognized Tribes.** The following are the federally recognized tribes in the Barrow Service Area

- Native Village of Atkasuk (Aktasook) – P.O. Box 108, Atkasuk, AK 99791
- Native Village of Barrow Inupiat Traditional Government - P.O. Box 1139, Barrow, AK 99723
- Inupiat Community of the Arctic Slope - P.O. Box 934, Barrow, AK 99723
- Kaktovik Village (aka Barter Island) - P.O. Box 75, Kaktovik, AK 99747
- Native Village of Nuiqsut (aka Nooiksut) – P.O. Box 109, Nuiqsut, AK 99789
- Native Village of Point Lay - P.O. Box 109, Point Lay, AK 99759
- Village of Wainwright - P.O. Box 143, Wainwright, AK 99782

Table 4.3

**Barrow Service Area  
Employment Status  
for the Population 16 years and Over**

	Male	Female
White Alone population:		
In labor force	516	362
Employed	506	349
Unemployed	10	13
AI/AN* Alone population:		
In labor force	897	641
Employed	710	641
Unemployed	187	134

\*AI/AN=American Indian/Alaska Native  
Source: U.S. Census Bureau, P160A, P160C Sex by employment status for the population 16 years and over, 2000 Census Summary File 2. Includes the communities of Atkasuk, Barrow, Kaktovik, Nuiqsut, Point Lay, and Wainwright

## DESCRIPTION OF HEALTH-CARE DELIVERY SYSTEM

In October 1990, under a P.L. 93-638, Title I contract, the Barrow Ukpeagvik Inupiat Corporation (UIC) assumed the management of housekeeping, laundry, maintenance, supply, dietary, and security at the Samuel Simmonds Memorial Hospital in Barrow. The Arctic Slope Native Association (ASNA) assumed management of all hospital-based clinical programs through a P.L. 93-638 Title V funding agreement in March 1996. The community health aide program is operated by the North Slope Borough, which has a standard federal contract with the IHS.

**Samuel Simmonds Memorial Hospital**, 1296 Agvik Street, Barrow, Alaska 99723

The *Samuel Simmonds Memorial Hospital* in Barrow is a 14-bed general medical facility operated by the Arctic Slope Native Association (ASNA) and accredited by The Joint Commission. Twelve beds are medical/surgical, and 2 are pediatric. *Samuel Simmonds* is equipped with a negative pressure room, an emergency procedure room and telemetry. The current facility, in need of replacement, is a single-story woodframe structure erected on wood pilings in 1964. A hospital replacement has been approved for IHS funding, and the project is in the design and site preparation stages of the health facility construction priority system.

The *Samuel Simmonds Hospital* provides primary care outpatient, 24-hour emergency room, ob/gyn, dental, optometry, pharmacy, laboratory, audiology, physical therapy, respiratory therapy, and radiology services. Mammography equipment is located on-site, but is operated by itinerant providers.

The village of Anaktuvuk Pass, geographically located in the North Slope Borough, receives health care from the Tanana Chiefs Conference (Fairbanks). The village of Point Hope, which is geographically located in the North Slope Borough, receives health care from Maniilaq



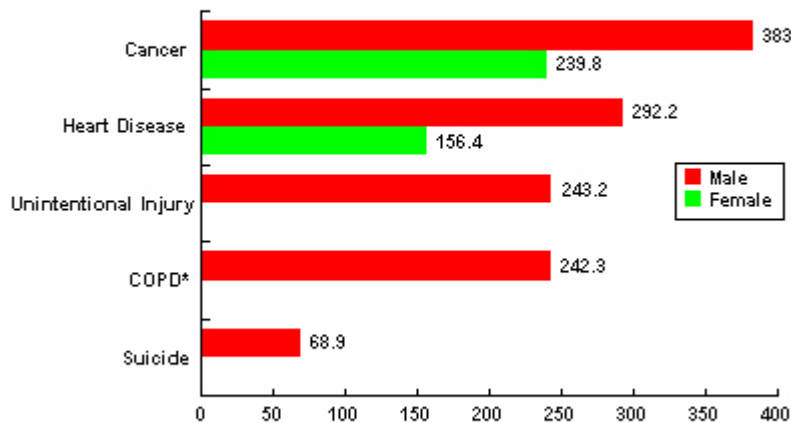
Association (Kotzebue). Personnel from the *Alaska Native Medical Center* in Anchorage provide specialty clinics in the Samuel Simmonds Memorial Hospital. The specialty and tertiary referral location for the Barrow service area is ANMC.

## NON-TRIBAL HEALTH AGENCIES, FACILITIES AND TYPES OF SERVICES PROVIDED TO SERVICE POPULATION

The North Slope Borough Health and Social Services Agency provides community health aide services in *Atqasuk Village Clinic*, *Kaktovik Village Clinic*, *Nuiqsuit Village Clinic*, *Point Lay Village Clinic* and *Wainwright Village Clinic*. The Borough is a local government under State statutes, and not a tribal health organization. Other Borough services include public health nursing, public assistance, alcohol and drug abuse treatment, women in crisis, parent-infant program, infant learning program, senior citizens program, children's receiving home, maternal/child nutrition program, alternative youth programs, environmental health services and community health education.

## HEALTH STATUS OF ALASKA NATIVES LIVING IN THE BARROW SERVICE AREA

Graph 4.1  
**Barrow Service Area**  
**Age-Adjusted Alaska Native Mortality Rates by Male and Female**  
**1999 - 2003**  
**Rates per 100,000**

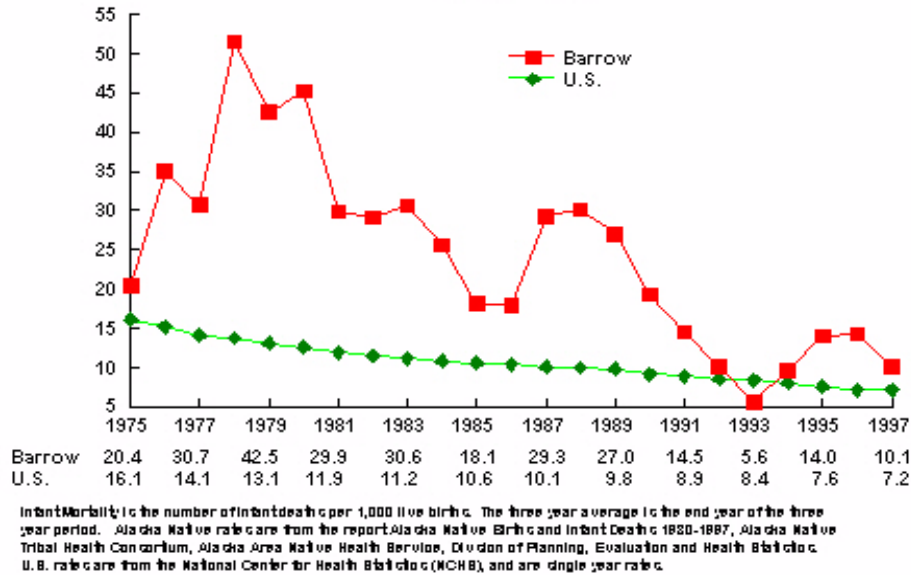


\*COPD= Chronic Obstructive Pulmonary Disease.  
 Rate not calculated for fewer than five deaths.  
 Source: Alaska Native Mortality Update: 1999-2003, Alaska Native Epidemiology Center, Office of Alaska Native Health Research, Division of Community Health Services, Alaska Native Tribal Health Consortium



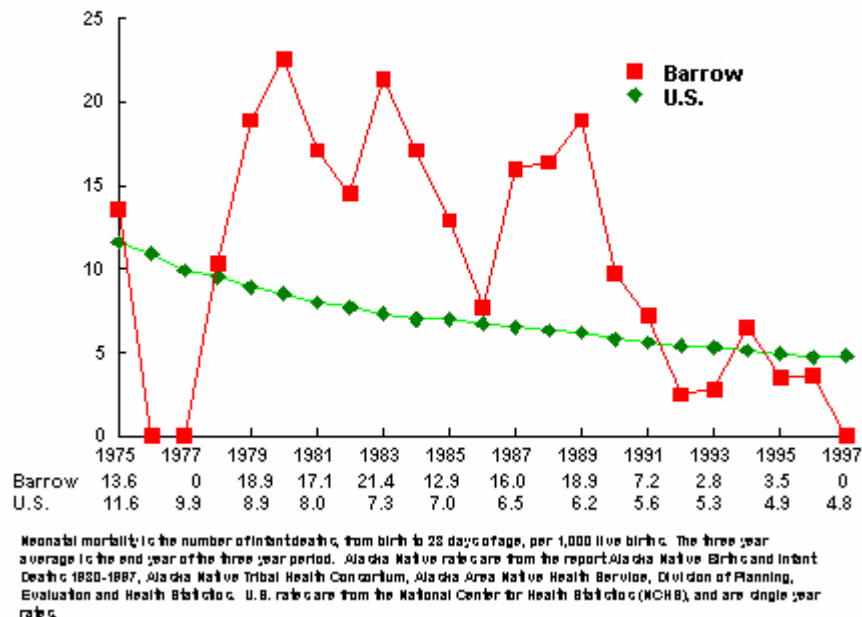
**Infant Mortality** is the number of infant deaths per 1,000 live births.

Graph 4.2  
**Infant Mortality Rates**  
**Barrow Service Area vs. U.S.**  
**1975 - 1997**



**Neonatal Mortality** is the number of infant deaths, from birth to 28 days of age, per 1,000 live births.

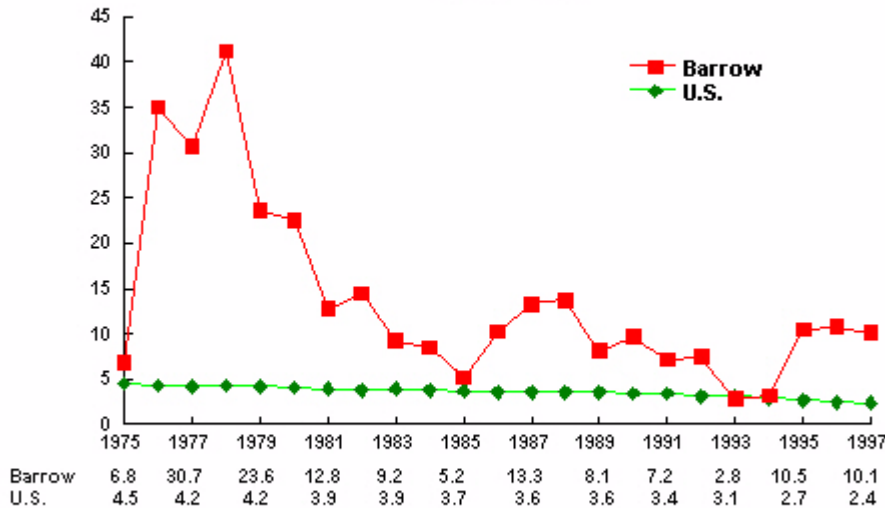
Graph 4.3  
**Neonatal Mortality Rates**  
**Barrow Service Area vs. U.S.**  
**1975 - 1997**





**Postneonatal Mortality** is the number of infant deaths, from 28 days to one year of age, per 1,000 live births.

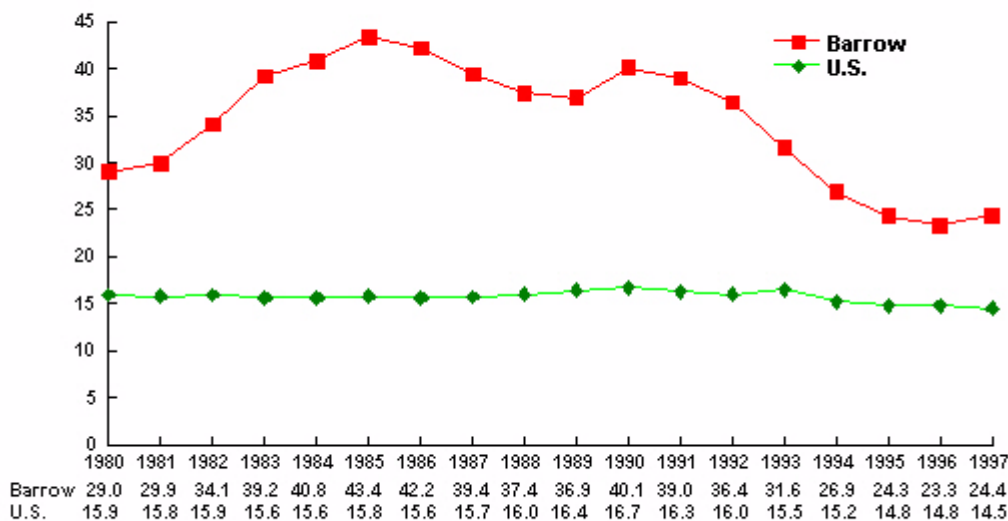
Graph 4.4  
**Postneonatal Mortality Rates**  
**Barrow Service Area vs. U.S.**  
**1975 - 1997**



Postneonatal mortality is the number of infant deaths, from 28 days to one year of age, per 1,000 live births. The three year average is the end year of the three year period. Alaska Native rates are from the report Alaska Native Births and Infant Deaths 1980-1997, Alaska Native Tribal Health Consortium, Alaska Area Native Health Service, Division of Planning, Evaluation and Health Statistics. U.S. rates are from the National Center for Health Statistics (NCHS) and are single year rates.

**Births Rate** is the number of births per 1,000 total population.

Graph 4.5  
**Birth Rates**  
**Barrow Service Area vs. U.S.**  
**1980 - 1997**

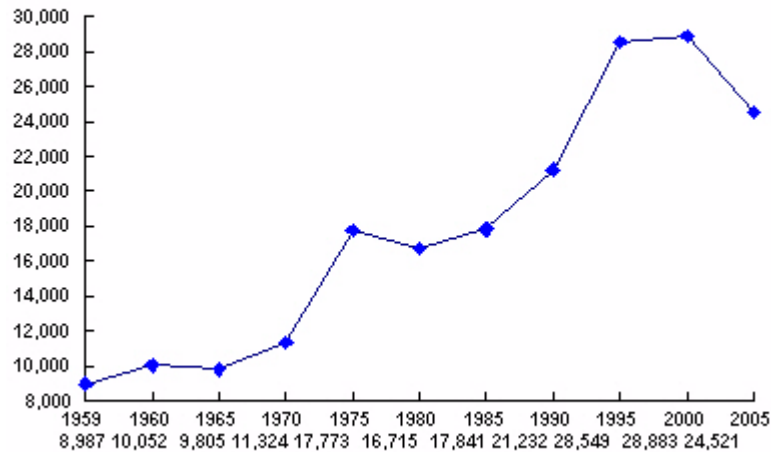


Birth rates are the number of births per 1,000 total population. The three year average is the end year of the three year period. Alaska Native rates are from the report Alaska Native Births and Infant Deaths 1980-1997, Alaska Native Tribal Health Consortium, Alaska Area Native Health Service, Division of Planning, Evaluation and Health Statistics. U.S. rates are from the National Center for Health Statistics (NCHS) and are single year rates.



## OUTPATIENT WORKLOAD/DIAGNOSES

Graph 4.6  
**Barrow Service Area**  
**Outpatient Workload: FY 1959 - FY 2005**



Source: Indian Health Service Inpatient/Outpatient Reporting System in Albuquerque, APC Report 1A.

Table 4.4  
**Barrow Service Area**  
**Leading Causes of Outpatient Visits: FY 2001 - 2004**

All Age Groups	FY 2001	FY 2002	FY 2003	FY 2004
Upper Respiratory Problems	2,627	2,154	2,008	1,429
Accidents & Injuries	1,766	1,497	1,286	1,099
Otitis Media	1,270	1,049	1,066	1,050
Assessment of Symptoms	1,134	810	760	694
Pregnancy, childbirth & Puerperal	388	266	409	671
Tests Only	1,984	661	1,093	633
Hospital Med/Surgical Follow-up	1,041	1,107	1,029	619
Bone & Joint Disorders	989	732	677	611
Hypertension	519	489	572	472
Arthritis	312	428	452	424

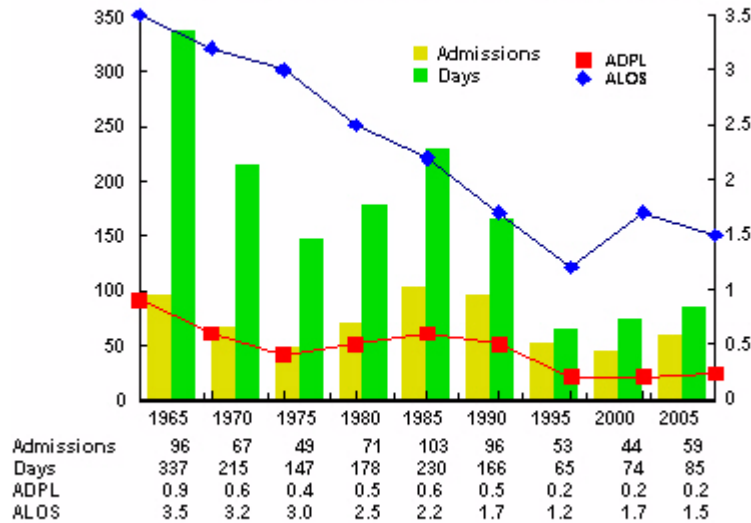
Source: Indian Health Service Inpatient/Outpatient Reporting System in Albuquerque, APC Report 1C.



## INPATIENT WORKLOAD

Graph 4.7

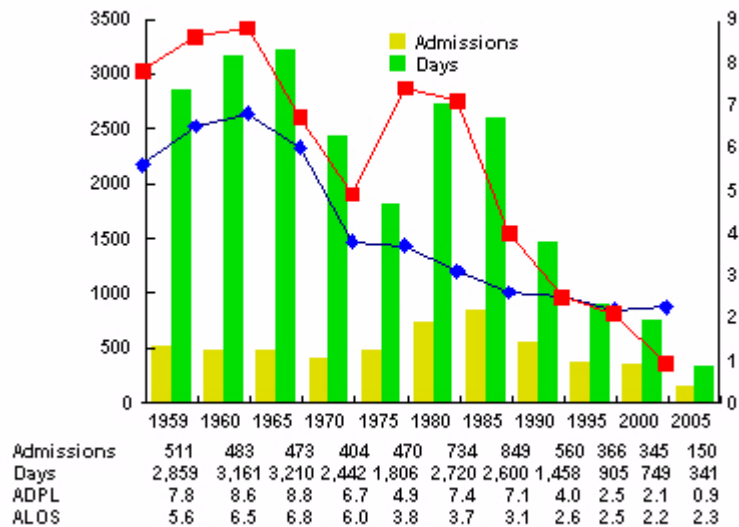
### Samuel Simmonds Memorial Hospital (Barrow) Newborn Inpatient Workload: FY 1965-FY 2005



ADPL = Average Daily Patient Load; ALOS = Average Length of Stay  
Source: HBA-202 Monthly Report of Inpatient Services

Graph 4.8

### Samuel Simmonds Memorial Hospital (Barrow) Inpatient Workload Excluding Newborns: FY 1965-FY 2005



ADPL = Average Daily Patient Load; ALOS = Average Length of Stay  
Source: HBA-202 Monthly Report of Inpatient Services





## DISCHARGE DIAGNOSES

Table 4.5  
**Barrow Service Area**  
**Leading Causes of Inpatient Discharges: FY 2001 - FY 2004**

	<b>FY 2001</b>	<b>FY 2002</b>	<b>FY 2003</b>	<b>FY 2004</b>
Deliveries (Childbirth)	37	26	23	30
Bronchitis, Emphysema	13	11	22	17
Pneumonia	25	15	21	10
Complications of Pregnancy	9	9	18	8
Infected Skin & Abrasions	11	12	4	8
Nutritional & Metabolic Disorders	3	3	4	7
Urinary Tract Diseases	6	12	6	6
Heart Disease	14	5	5	4

Source: Indian Health Service Inpatient/Outpatient Reporting System in Albuquerque, APC Report 2C.



[ blank page ]