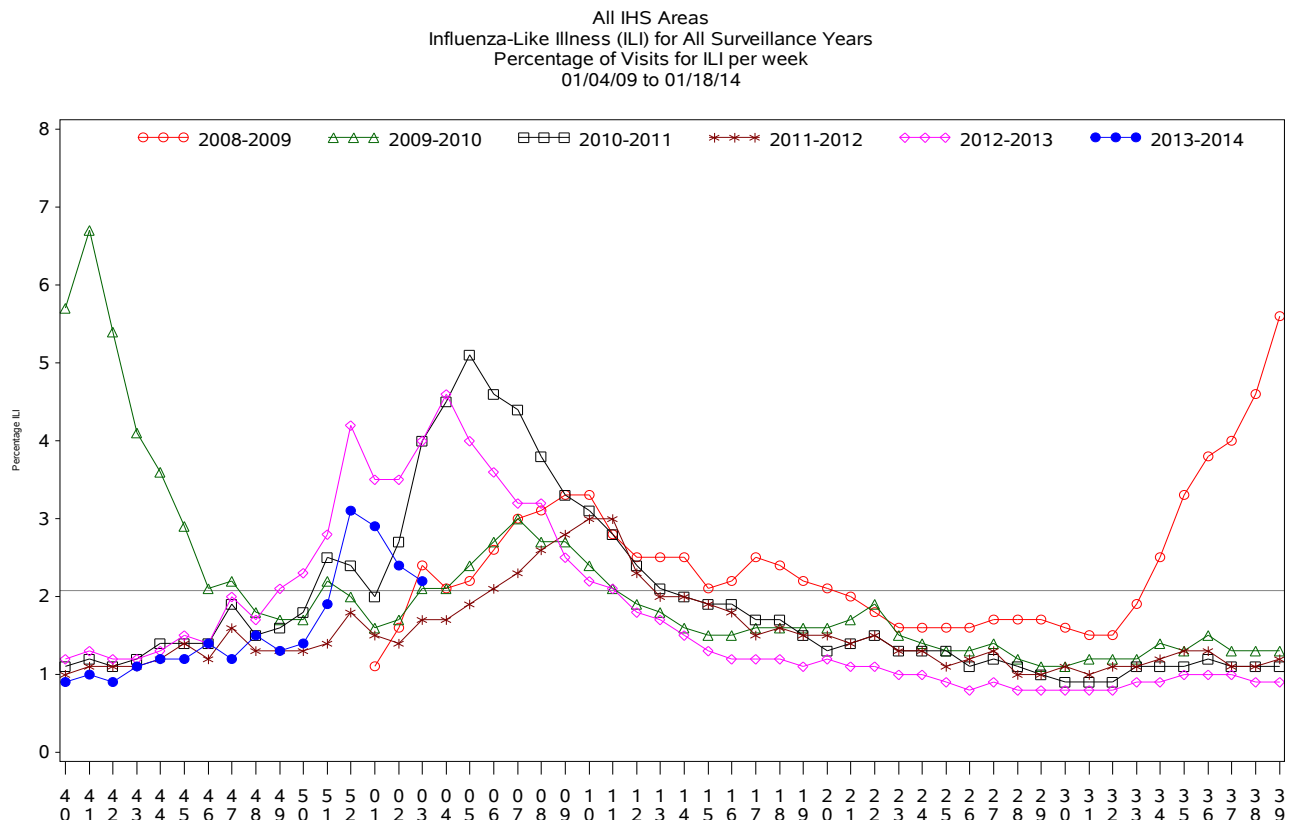




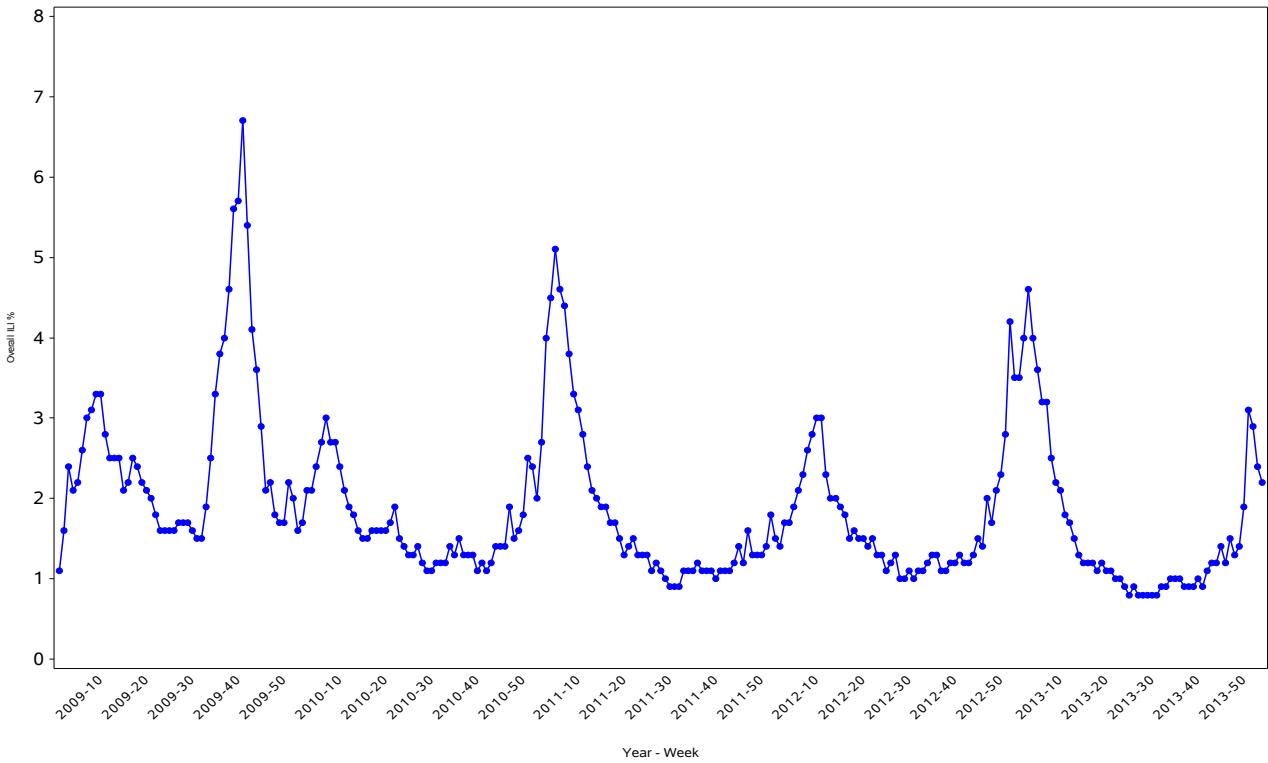
Indian Health Service
 Division of Epidemiology and Disease Prevention
Influenza Surveillance Report
IHS Influenza Awareness System (IIAS)
#16 (Week 3: 1/12/2014 – 1/18/2014)

- While overall influenza-like-illness (ILI) activity in IHS and the U.S. decreased this week, ILI levels remain above the baseline in some IHS regions and in the U.S. ILI activity will likely continue to increase in the coming weeks.
- H1N1 is the predominant strain so far. CDC has received several reports of severe flu illness among young and middle-aged adults, many of whom were infected with the 2009 H1N1 virus. Some hospitalizations and deaths have been reported.
- The current influenza vaccine protects against the H1N1 strain. Currently only 33% of the IHS Active Clinical population has been vaccinated. Sites should continue to promote influenza vaccination.
- American Indian/Alaska Native people are at high risk for serious influenza-related complications. Early initiation of antiviral treatment for suspected influenza cases is particularly critical. Guidelines regarding influenza antiviral treatment can be found here: <http://www.cdc.gov/mmwr/preview/mmwrhtml/rr6001a1.htm>

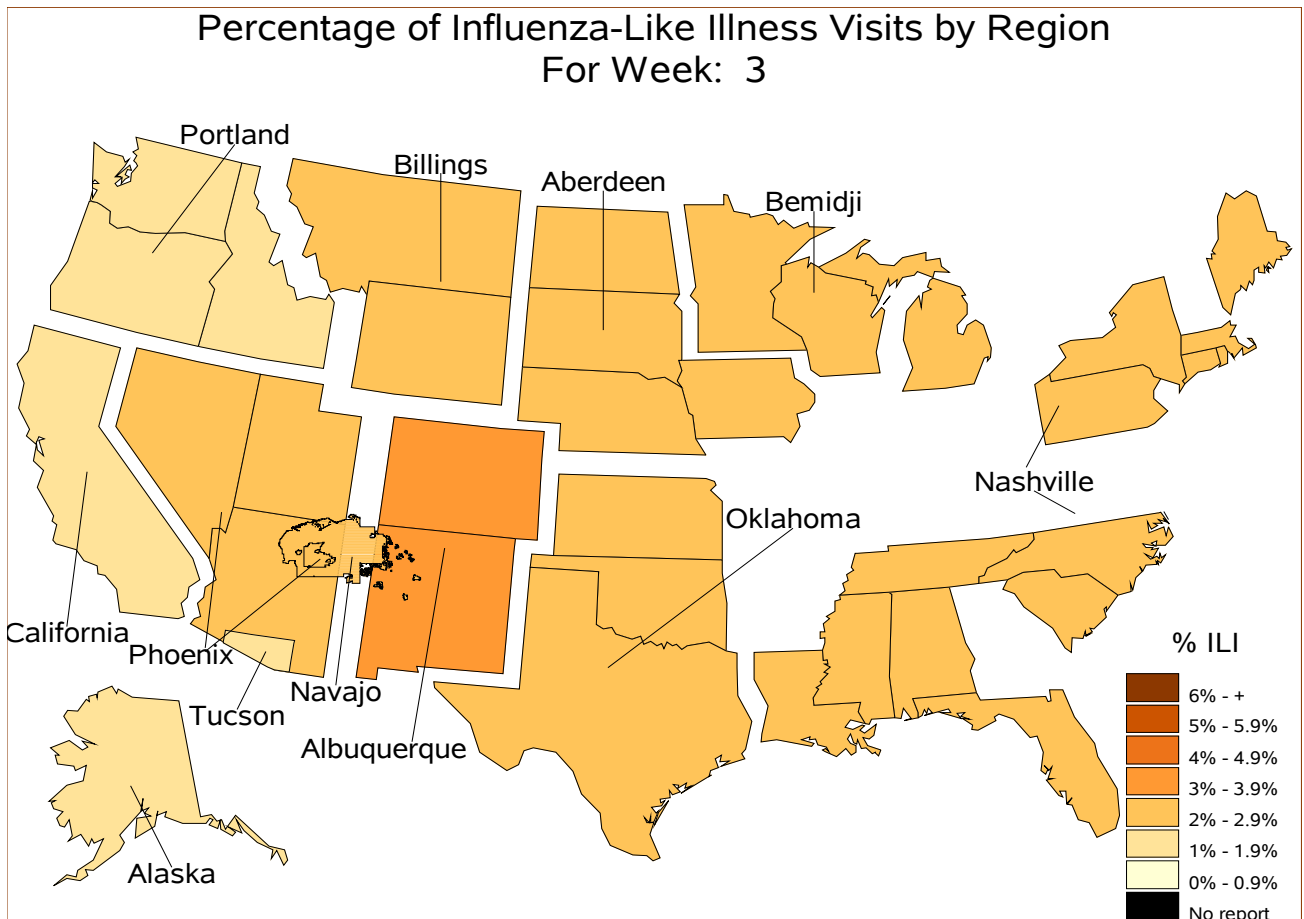


Percentage of ILI visits is number of ILI visits divided by total number of daily visits.
 The horizontal line represents the 2012-2013 baseline. The baseline is the mean percentage of patient visits for ILI during non-influenza weeks for the previous three seasons plus two standard deviations.

All IHS Areas
 Influenza-Like Illness (ILI) All Surveillance Years - Continuous
 Percentage of Visits for ILI per week
 01/04/09 to 01/18/14



Percentage of ILI visits is number of ILI visits divided by total number of daily visits.



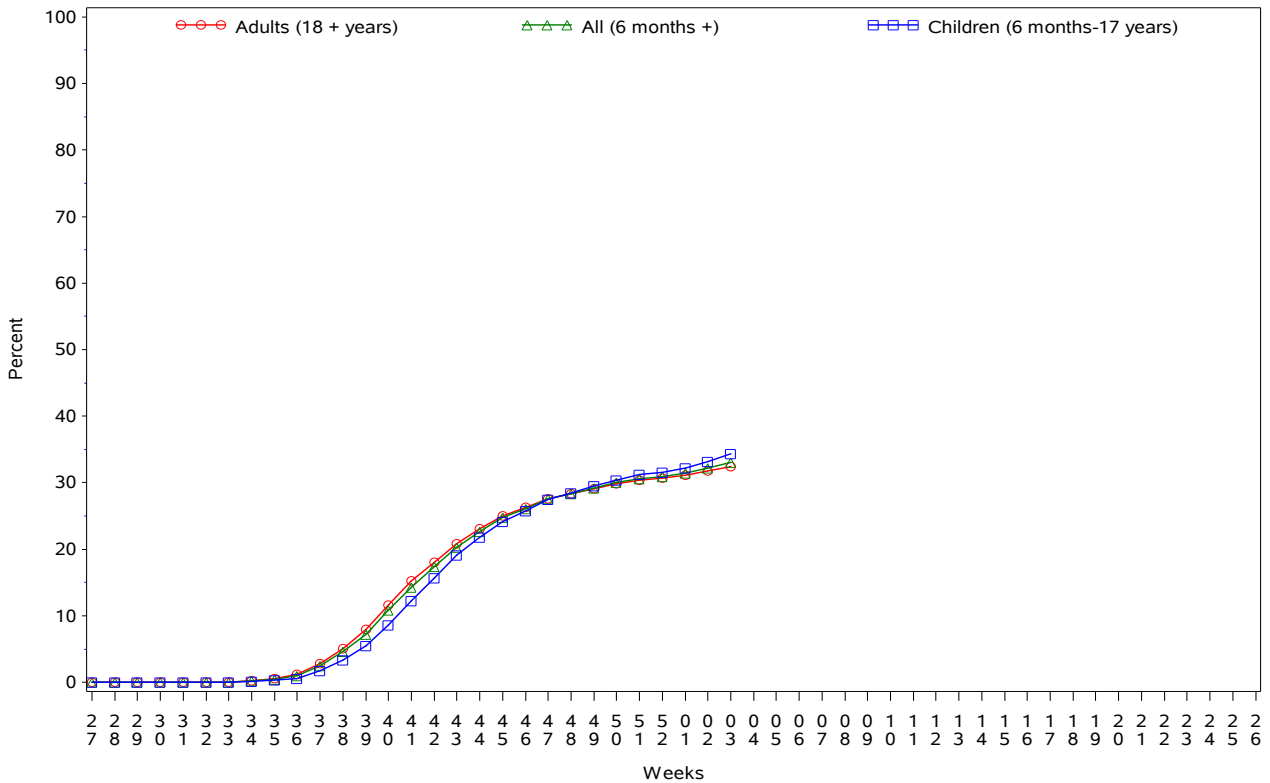
% Visits for ILI Compared to Previous Week

IHS Areas	% in Week 2	% in Week 3
NATIONAL	2.4	2.2
ABERDEEN	3.0	2.2
ALASKA	1.3	1.0
ALBUQUERQUE	2.5	3.6
BEMIDJI	2.0	2.5
BILLINGS	2.5	2.1
CALIFORNIA	1.3	1.8
NASHVILLE	2.0	2.4
NAVAJO	2.3	2.4
OKLAHOMA	2.9	2.5
PHOENIX	2.3	2.1
PORTLAND	2.0	1.8
TUCSON	1.5	1.7

IHS Influenza Vaccination* Surveillance

- As of 1/18/2014, sites reporting to the IAS have administered 384,508 doses (1st and 2nd) of seasonal influenza vaccine to Active Clinical patients.

All IHS Areas
 Cumulative One-Dose Seasonal Influenza Vaccine Coverage
 06/30/13 to 01/18/14
 Active Clinical Population



* Not all sites are currently sending the newer influenza vaccine codes, which may result in an underestimate of vaccine coverage.

Influenza Vaccination Coverage by Age Group*

	Active Clinical Population**	Seasonal Flu Vaccine (At Least 1 Dose)***	% Seasonal Flu (At Least 1 Dose)	Seasonal Flu Vaccine (At Least 2 Doses)	% Seasonal Flu (At Least 2 Doses)	Total # Doses Administered
0 - 5 months	5,248	128	2.4	1	0.0	129
6 - 23 months	26,292	14,250	54.2	3,690	14.0	17,998
2 - 4 years	64,818	20,347	31.4	668	1.0	21,082
5 - 17 years	236,061	77,547	32.9	877	0.4	78,707
18 - 49 years	506,864	129,642	25.6	1,445	0.3	131,734
50 - 64 years	194,667	80,561	41.4	987	0.5	81,967
65 + years	106,558	51,890	48.7	760	0.7	53,020
Children (6 months-17 years)	327,171	112,144	34.3	5,235	1.6	117,787
Adults (18 + years)	808,089	262,093	32.4	3,192	0.4	266,721
All (6 months +)	1,135,260	374,237	33.0	8,427	0.7	384,508

* Not all sites are currently sending the newer influenza vaccine codes, which may result in an underestimate of vaccine coverage.

** Active Clinical population is defined as patients who have had at least 2 visits in the last 3 years

*** Limited to sites that exported both doses administered and active clinical population data

Influenza Vaccination Doses Administered by Influenza Vaccination Type*

Area	Inactive CVX Codes**	CVX 88 FLU-NOS** *	CVX 111 FLU-LAIV3	CVX 135 FLU-HIGH	CVX 140 FLU-IIV3pf	CVX 141 FLU-IIV3	CVX 144 FLU-DERMAL	CVX 149 FLU-LAIV4	CVX 150 FLU-IIV4pf	CVX 153 FLU-ccIIV3	CVX 155 FLU-RIV3	CVX 158 IIV4	Proc 99.52 Vac Inf	ICD-9 V04.81 Vac Inf	CPT Billing Codes	Cumulative # of Doses Seasonal Flu
ABR	89	270	43	333	4207	17301	84	2249	1239	17	10	686	1	2253	201	28983
AKA	542	80	60	236	2753	6246	28	768	1331	2	3	220	.	432	252	12953
ALB	47	259	22	643	4393	18706	306	1992	1098	8	8	121	.	651	1200	29454
BEM	70	130	201	77	1970	6724	94	77	13	.	1	.	.	1058	295	10710
BIL	30	132	35	986	12409	6294	248	2085	1030	8	.	10	1	174	287	23729
CAO	73	173	72	605	1915	10486	49	537	523	106	.	3	.	516	347	15405
NSA	80	57	13	77	3225	4182	441	140	293	.	.	5	.	145	135	8793
NAV	330	392	72	138	6995	83351	1	1690	1174	1	2	1010	33	842	1152	97183
OKC	354	2762	123	2046	11782	63176	135	3500	6204	3	6	499	508	3738	361	95197
PHX	176	345	58	595	15145	16915	43	2057	2935	1	6	81	6	1345	1481	41189
POR	123	428	395	427	3878	20436	82	1852	370	10	533	61	.	716	344	29655
TUC	23	29	108	2	4951	1432	.	392	662	.	2	45	.	249	128	8023
	1937	5057	1202	6165	73623	255249	1511	17339	16872	156	571	2741	549	12119	6183	401274

* Not all sites are currently sending the newer influenza vaccine codes, which may result in an underestimate of vaccine coverage.

** Inactive CVX Codes 15 (FLU-TIVhx), 16 (FLU-WHOLE), 123 (FLU-H5N1), and 151 (FLU-NasNOS) should not be used to document flu vaccines given this flu season.

*** CVX Code 88 (FLU-NOS) should only be used to document flu vaccines given elsewhere when flu vaccine type is unknown.

Summary

- This report includes data from the following # of RPMS databases:

IHS Area	# of RPMS Databases Reporting*	# of Facilities Reporting**
NATIONAL	158	354
ABERDEEN	16	27
ALASKA	12	84
ALBUQUERQUE	12	16
BEMIDJI	1	8
BILLINGS	12	28
CALIFORNIA	16	22
NASHVILLE	17	21
NAVAJO	8	33
OKLAHOMA	22	48
PHOENIX	14	24
PORTLAND	27	37
TUCSON	1	6

* Exporting databases may include data from multiple facilities.

** Includes only facility categories: Hospital, Health Center, Health Station, Health Location, Alaska Village Clinic.