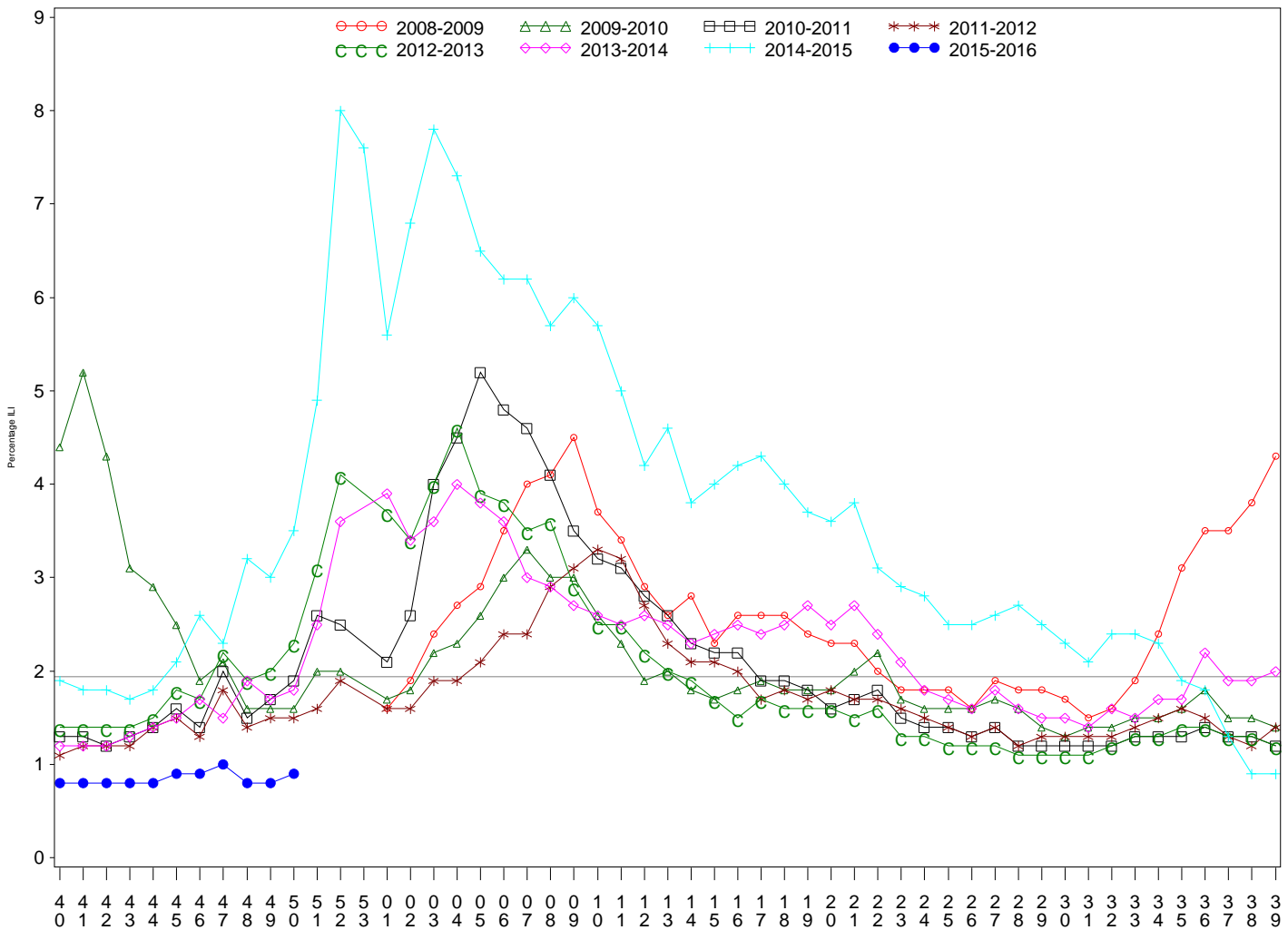




**Indian Health Service**  
 Division of Epidemiology and Disease Prevention  
**Influenza Surveillance Report**  
*IHS Influenza Awareness System (IIAS)*  
**(Week 50: 12/13/2015 – 12/19/2015)**

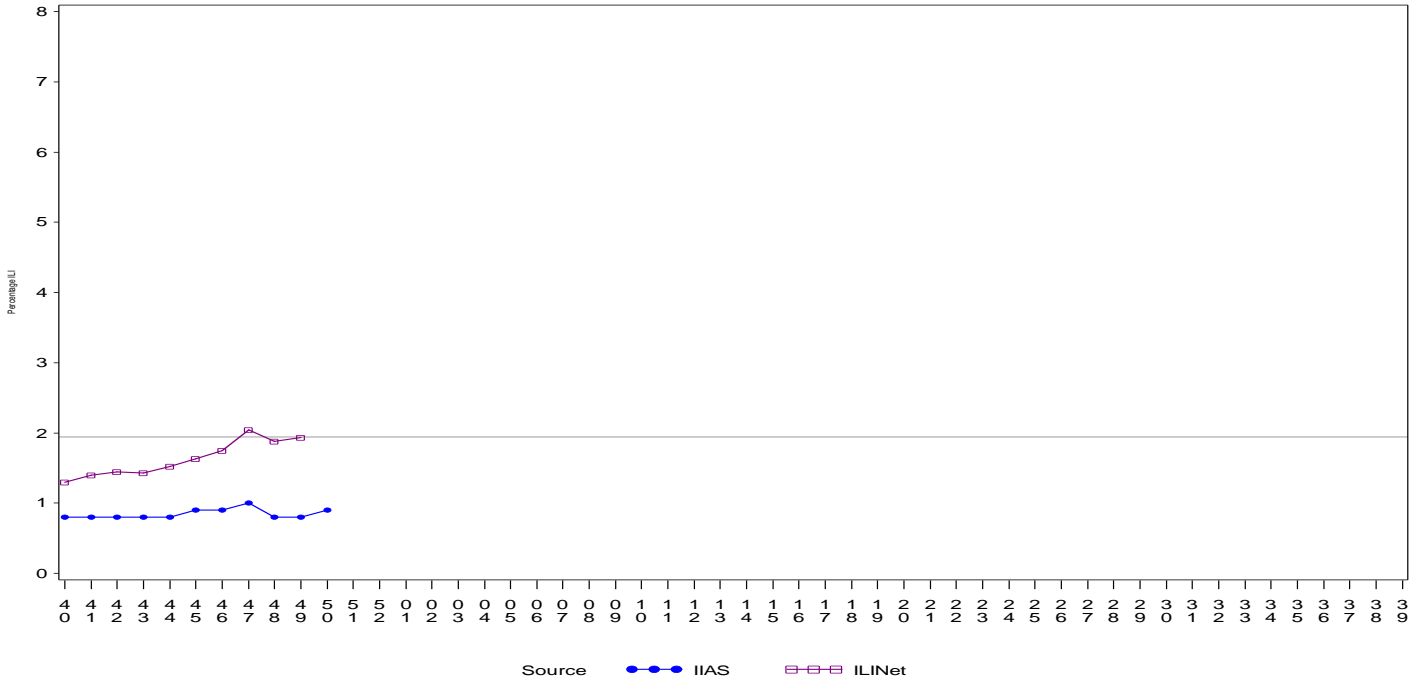
- Influenza-like-illness (ILI) activity in IHS and the U.S. is low, and below the national baseline.
- To date IHS has administered over 296,000 doses of influenza vaccine.
- Overall, 27.1% of the IHS Active Clinical population received an influenza vaccine this season.

All IHS Areas  
 Influenza-Like Illness (ILI) for All Surveillance Years  
 Percentage of Visits for ILI per week  
 01/04/09 to 12/19/15



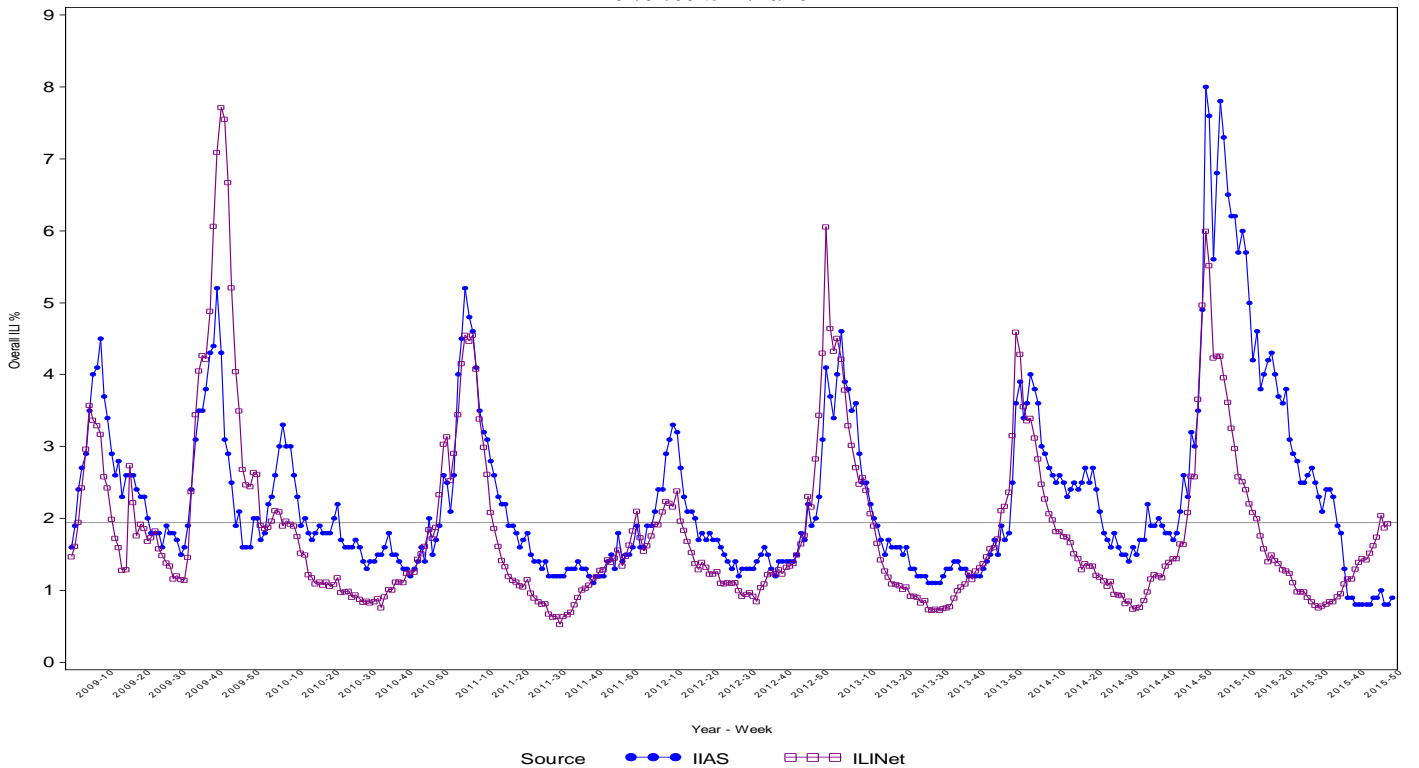
Percentage of ILI visits is number of ILI visits divided by total number of daily visits.  
 The horizontal line represents the 2014-2015 baseline. The baseline is the mean percentage of patient visits for ILI during non-influenza weeks for the previous three seasons plus two standard deviations.  
 Sources: ILINet - CDC Sentinal Surveillance System for Influenza-Like Illness, IIAS - IHS Influenza Awareness System

Proportion of Outpatient Visits for Influenza-Like Illness (ILI)  
 Percent ILI for Flu Year 2015 - 2016  
 ILINet vs. IIAS  
 10/04/15 to 12/19/15



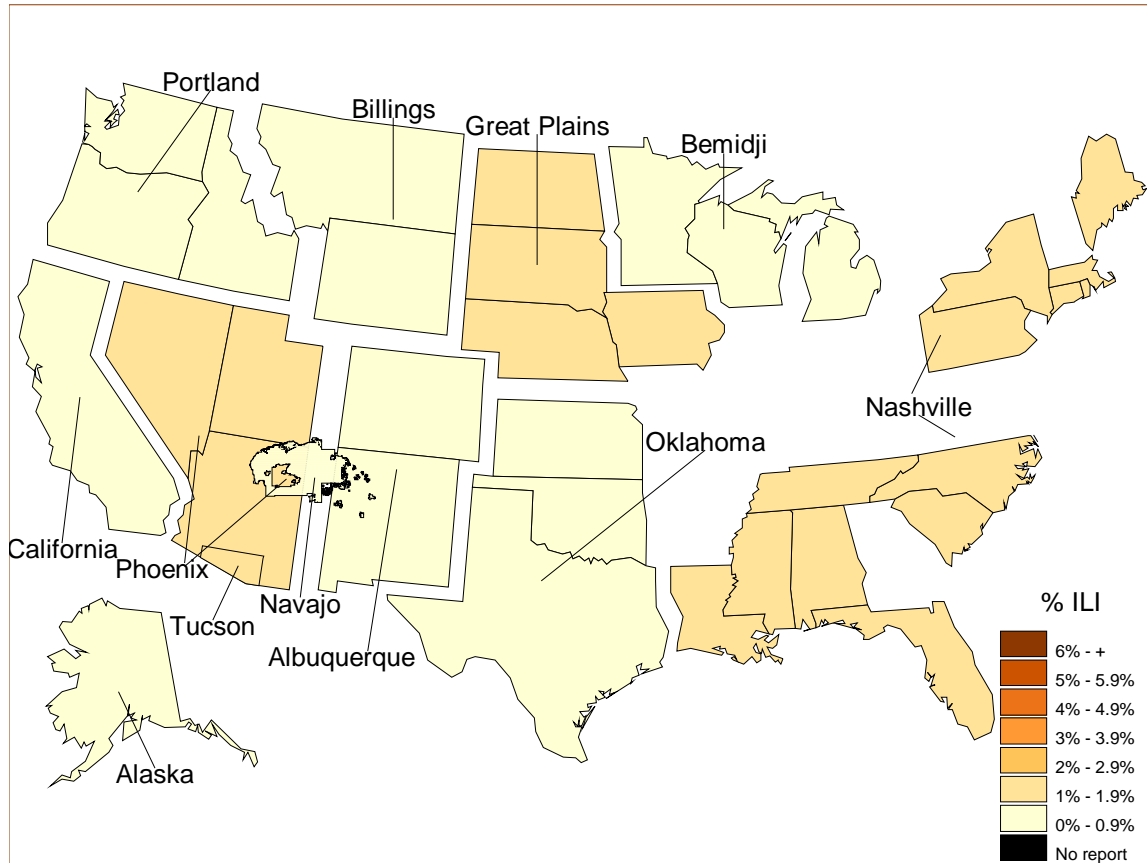
Percentage of ILI visits is number of ILI visits divided by total number of daily visits (outpatient visits).  
 The horizontal line represents the 2014-2015 baseline. The baseline is the mean percentage of patient visits for ILI during non-influenza weeks for the previous three seasons plus two standard deviations.

IIAS versus ILINet  
 Influenza-Like Illness (ILI) All Surveillance Years - Continuous  
 Percentage of Visits for ILI per week  
 01/04/09 to 12/19/15



Percentage of ILI visits is number of ILI visits divided by total number of daily visits (outpatient visits).  
 The horizontal line represents the 2014-2015 baseline. The baseline is the mean percentage of patient visits for ILI during non-influenza weeks for the previous three seasons plus two standard deviations.

Percentage of Influenza-Like Illness Visits by IHS Area  
For Week: 50



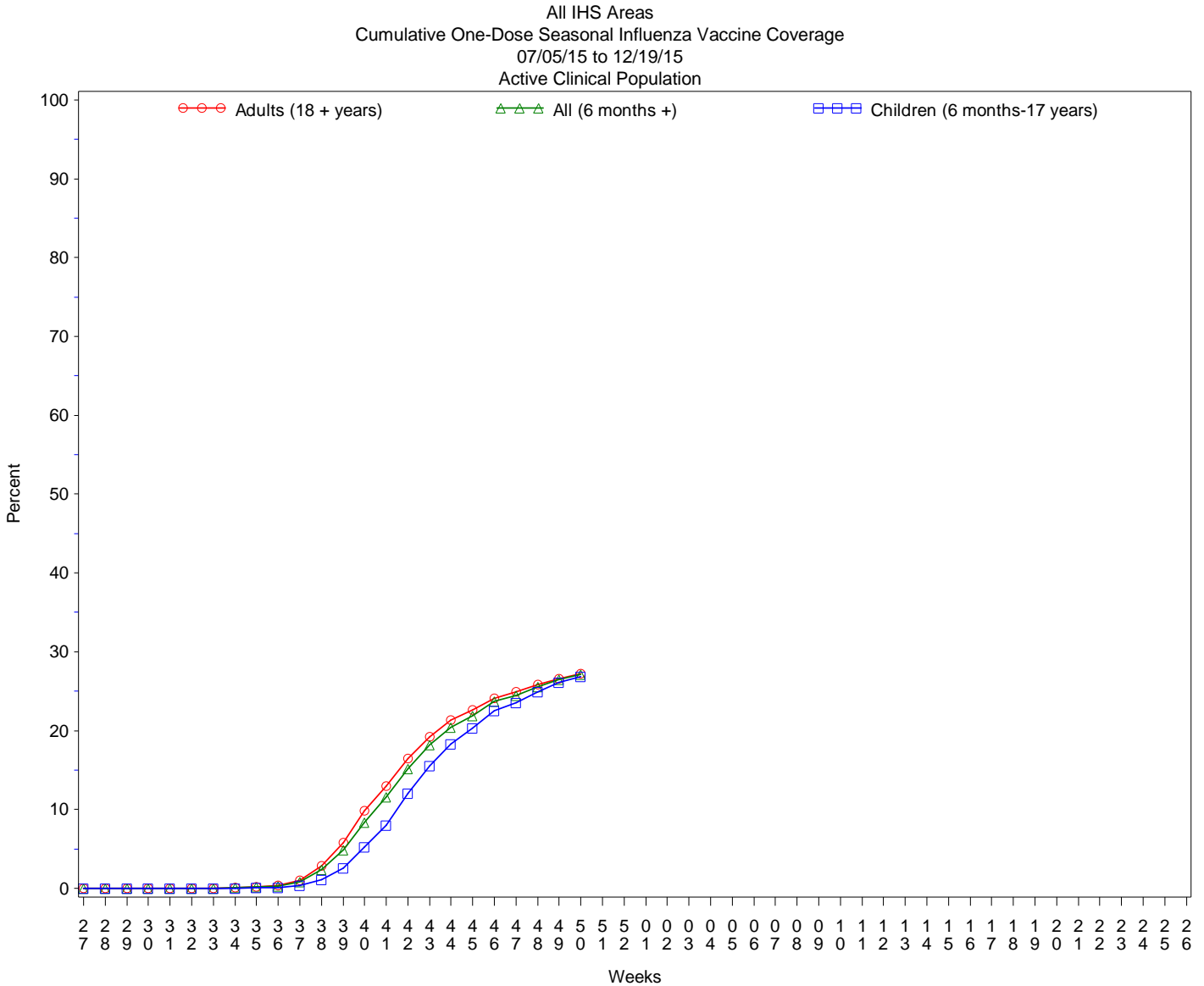
% Visits for ILI Compared to Previous Week

IHS Areas	% in Week 49	% in Week 50
NATIONAL	0.8	0.9
ALASKA	0.7	0.5
ALBUQUERQUE	0.5	0.5
BEMIDJI	1.2	0.7
BILLINGS	0.9	0.9
CALIFORNIA	0.7	0.5
GREAT PLAINS	0.9	1.0
NASHVILLE	1.2	1.7
NAVAJO	0.9	0.8
OKLAHOMA	0.6	0.8
PHOENIX	1.1	1.4
PORTLAND	0.4	0.5
TUCSON	1.3	1.6

Percentage of ILI visits is number of ILI visits divided by total number of daily visits.

## IHS Influenza Vaccination Surveillance

- As of 12/19/2015, sites reporting to the IIAS have administered 296,850 doses (1st and 2nd) of seasonal influenza vaccine to Active Clinical patients. This is lower than the total number of doses administered this time last year.



## Influenza Vaccination Coverage by Age Group\*

Age Group	Active Clinical Population**	Seasonal Flu Vaccine (At Least 1 Dose)***	% Seasonal Flu (At Least 1 Dose)	Seasonal Flu Vaccine (At Least 2 Doses)	% Seasonal Flu (At Least 2 Doses)	Total #Doses Administered****
0 - 5 months	4,926	70	1.4	24	0.5	95
6 - 23 months	24,212	9,449	39.0	1,347	5.6	10,824
2 - 4 years	59,784	13,743	23.0	167	0.3	13,995
5 - 17 years	223,907	59,696	26.7	355	0.2	60,421
18 - 49 years	465,165	98,129	21.1	472	0.1	99,385
50 - 64 years	192,564	66,043	34.3	364	0.2	66,928
65 + years	108,728	44,526	41.0	362	0.3	45,297
Children (6 months-17 years)	307,903	82,888	26.9	1,869	0.6	85,240
Adults (18 + years)	766,457	208,698	27.2	1,198	0.2	211,610
All (6 months +)	1,074,360	291,586	27.1	3,067	0.3	296,850

\* Limited to sites that exported both doses administered and active clinical population data.

\*\* Active Clinical is defined as patients who have had at least 2 visits in the last 3 years.

\*\*\* Number of unique patients with at least 1 dose.

\*\*\*\* Total # Doses Administered = All doses administered to patients including doses not included in coverage calculation due to lack of Active Clinical Population data.

## Influenza Vaccination Doses Administered by Influenza Vaccination Type\*

Area	INACTIVE CVX CODES*	CVX 88 FLU-NOS**	CVX 111 FLU-LAIV3	CVX 135 FLU-HIGH	CVX 140 FLU-IIV3pf	CVX 141 FLU-IIV3	CVX 144 FLU-DER-MAL	CVX 149 FLU-LAIV4	CVX 150 FLU-IIV4pf	CVX 153 FLU-cclIV3	CVX 155 FLU-RIV3	CVX 158 IIV4	CVX 161 IIV4pf-ped	CVX 166	Proc 99.52 Vac Inf	ICD-9 V04.81 Vac Inf	CPT Billing Codes+	Cumulative # of Doses Seasonal Flu
AKA	14	201	2	201	154	878	3	704	3858	67	.	3408	326	16	.	4	106	9942
ALB	27	112	9	1374	4276	12339	1	1869	970	1	194	1265	570	8	.	11	352	23378
BEM	133	57	5	327	379	5719	88	667	1344	2	2	737	217	2	.	65	99	9843
BIL	6	142	4	1054	7230	3694	1	1575	3097	.	.	600	314	1	.	15	118	17851
CAO	99	226	5	1260	2142	4810	9	1342	4657	.	.	4155	454	29	.	16	261	19465
GPA	202	375	38	505	4693	13773	1	1540	3392	1	4	3894	1006	3	.	30	65	29522
NSA	1	85	.	224	1327	5940	138	350	2785	1	8	246	67	266	.	7	134	11579
NAV	115	209	1	875	301	60623	1	869	7995	1	2	3669	1401	101	.	72	519	76754
OKC	464	1088	61	1922	1433	26146	33	1335	3625	1	12	1985	635	341	33	40	177	39331
PHX	15	376	2	1801	9110	16853	14	1935	7328	.	5	587	1608	16	2	42	333	40027
POR	21	469	21	876	1883	9933	3	1807	2828	15	8	2515	273	470	.	92	138	21352
TUC	.	89	1	27	4903	339	2	216	963	.	.	6	386	1	.	27	69	7029
	<b>1097</b>	<b>3429</b>	<b>149</b>	<b>10446</b>	<b>37831</b>	<b>161047</b>	<b>294</b>	<b>14209</b>	<b>42842</b>	<b>89</b>	<b>235</b>	<b>23067</b>	<b>7257</b>	<b>1254</b>	<b>35</b>	<b>421</b>	<b>2371</b>	<b>306073</b>

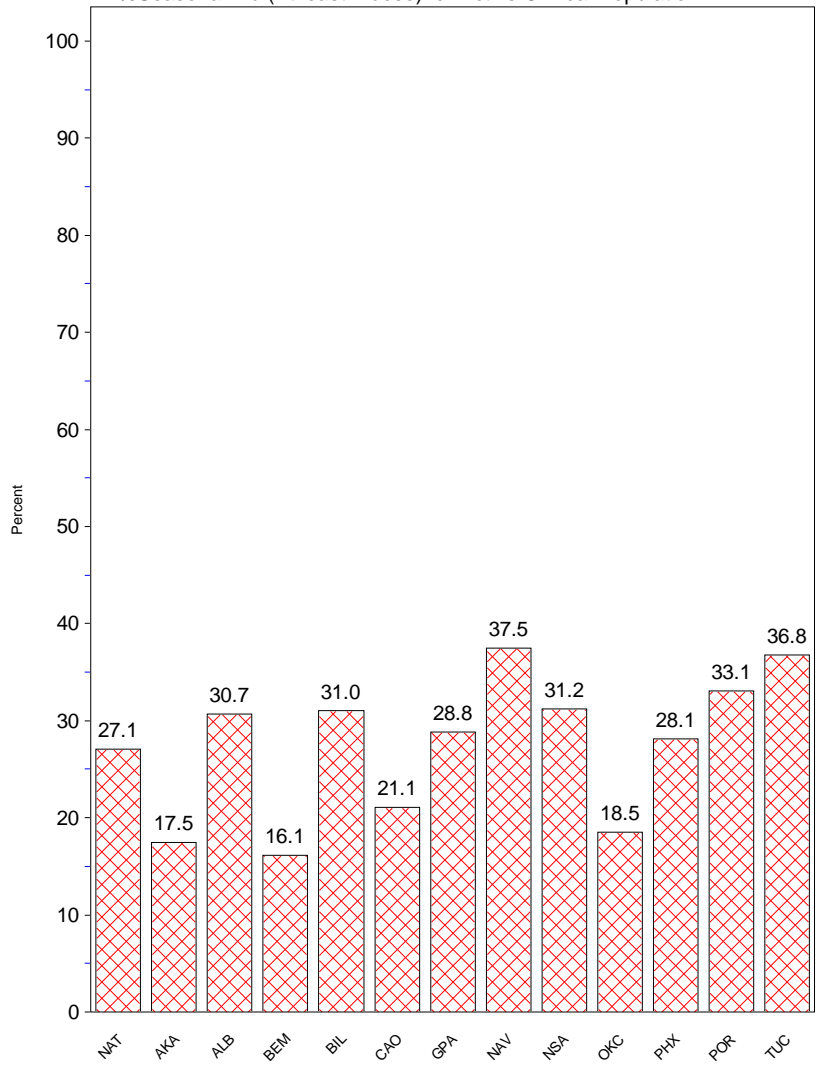
\* Inactive CVX Codes 15 (FLU-TIVhx), 16 (FLU-WHOLE), 123 (FLU-H5N1), and 151 (FLU-NasNOS) should not be used to document flu vaccines given this flu season.

\*\* CVX Code 88 (FLU-NOS) should only be used to document flu vaccines given elsewhere when flu vaccine type is unknown.

+ CPT Flu codes include: 90654-90662, 90672-90673, 90685-90686, 90724, G0008, G8108.

^ ICD9 codes V04.8 and V06.6 are not displayed on this report and are not used in any of the influenza vaccine coverage calculations.

All IHS Areas  
Influenza Vaccine Coverage by Age Groups – All (6 mons+)  
07/05/15 to 12/19/15  
%Seasonal Flu (At least 1 dose) for Active Clinical Population



- This report includes data from the following number of Resource and Patient Management System (RPMS) databases:

<b>IHS Area</b>	<b># of RPMS Databases Reporting*</b>	<b># of Facilities Reporting**</b>
NATIONAL	156	307
ALASKA	12	67
ALBUQUERQUE	13	22
BEMIDJI	5	11
BILLINGS	13	24
CALIFORNIA	20	36
GREAT PLAINS	17	30
NASHVILLE	17	22
NAVAJO	8	21
OKLAHOMA	10	14
PHOENIX	18	30
PORTLAND	21	24
TUCSON	2	6

\* Exporting databases may include data from multiple facilities.

\*\* Includes only facility categories: Hospital, Health Center, Health Station, Health Location, Alaska Village Clinic.