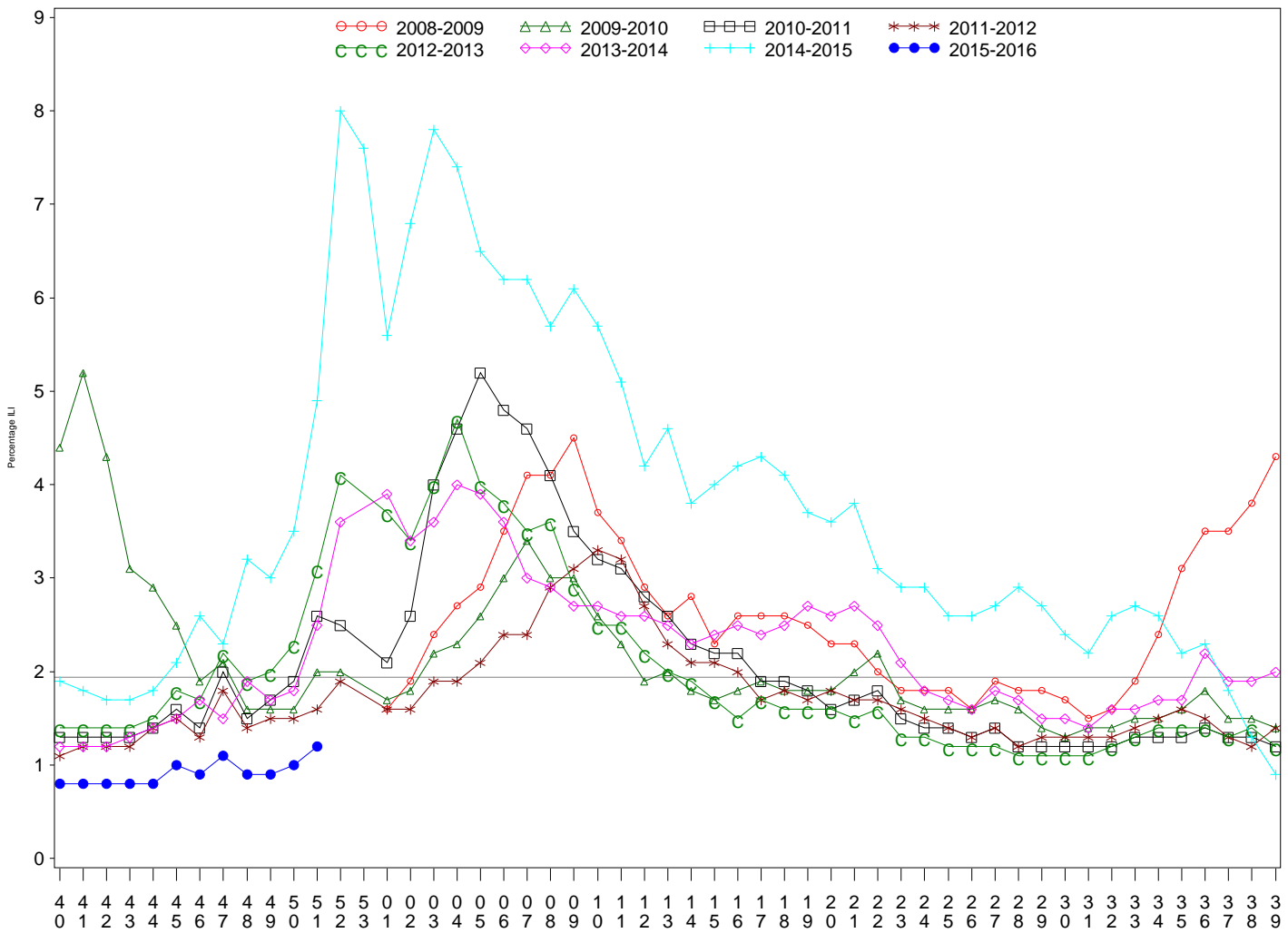




**Indian Health Service**  
 Division of Epidemiology and Disease Prevention  
**Influenza Surveillance Report**  
*IHS Influenza Awareness System (IIAS)*  
**(Week 51: 12/20/2015 – 12/26/2015)**

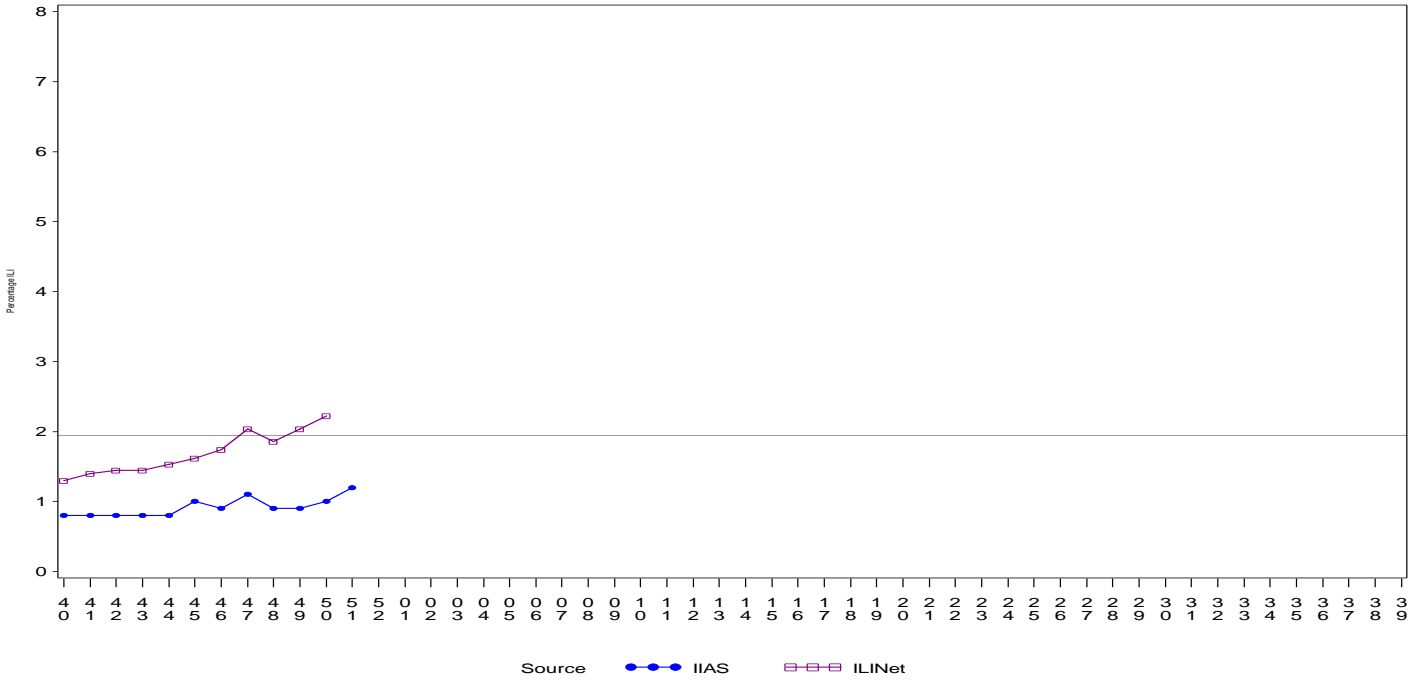
- Influenza-like-illness (ILI) activity in IHS is low, and below the national baseline.
- To date IHS has administered over 302,000 doses of influenza vaccine.
- Overall, 27.7% of the IHS Active Clinical population received an influenza vaccine this season.

All IHS Areas  
 Influenza-Like Illness (ILI) for All Surveillance Years  
 Percentage of Visits for ILI per week  
 01/04/09 to 12/26/15



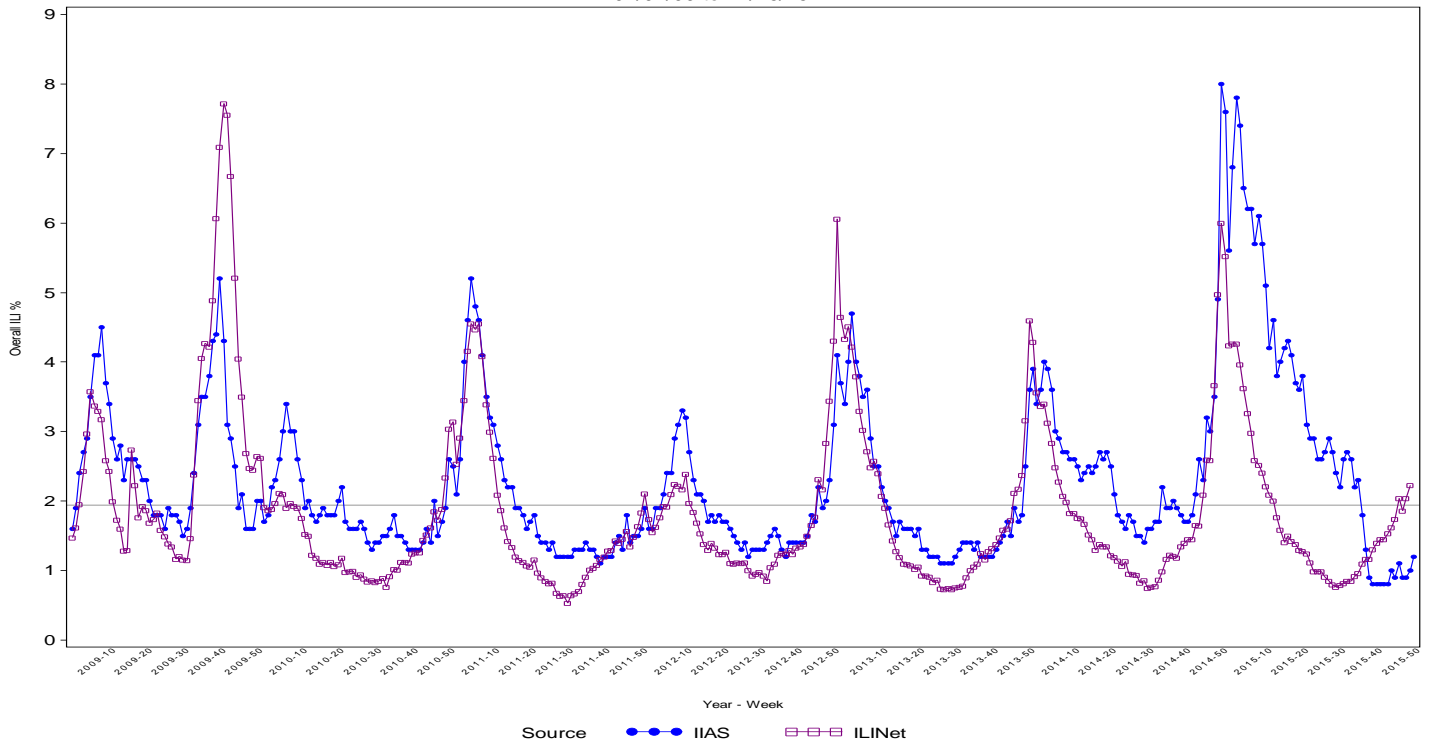
Percentage of ILI visits is number of ILI visits divided by total number of daily visits.  
 The horizontal line represents the 2014-2015 baseline. The baseline is the mean percentage of patient visits for ILI during non-influenza weeks for the previous three seasons plus two standard deviations.  
 Sources: ILINet - CDC Sentinal Surveillance System for Influenza-Like Illness, IIAS - IHS Influenza Awareness System

Proportion of Outpatient Visits for Influenza-Like Illness (ILI)  
 Percent ILI for Flu Year 2015 - 2016  
 ILINet vs. IIAS  
 10/04/15 to 12/26/15



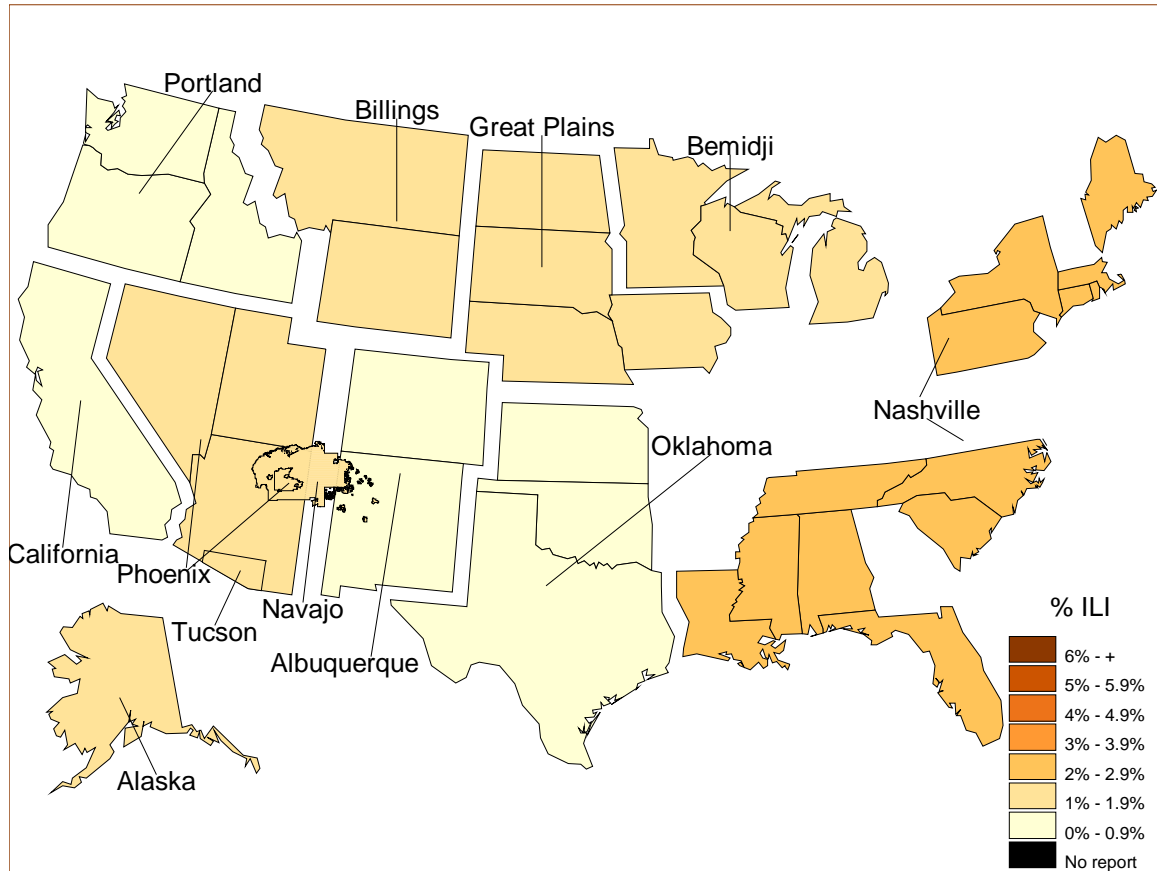
Percentage of ILI visits is number of ILI visits divided by total number of daily visits (outpatient visits).  
 The horizontal line represents the 2014-2015 baseline. The baseline is the mean percentage of patient visits for ILI during non-influenza weeks for the previous three seasons plus two standard deviations.

IIAS versus ILINet  
 Influenza-Like Illness (ILI) All Surveillance Years - Continuous  
 Percentage of Visits for ILI per week  
 01/04/09 to 12/26/15



Percentage of ILI visits is number of ILI visits divided by total number of daily visits (outpatient visits).  
 The horizontal line represents the 2014-2015 baseline. The baseline is the mean percentage of patient visits for ILI during non-influenza weeks for the previous three seasons plus two standard deviations.

Percentage of Influenza-Like Illness Visits by IHS Area  
For Week: 51



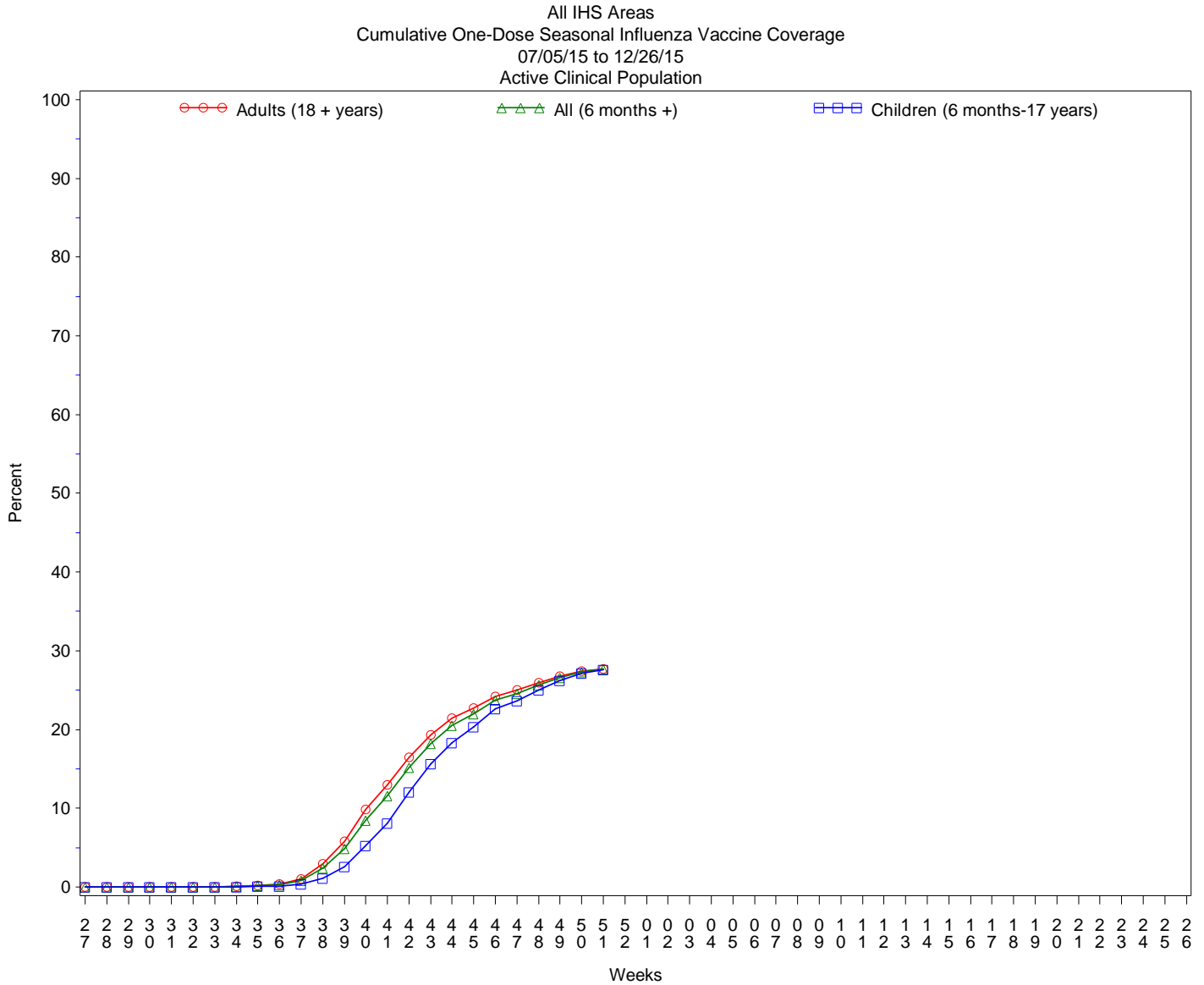
% Visits for ILI Compared to Previous Week

IHS Areas	% in Week 50	% in Week 51
NATIONAL	1.0	1.2
ALASKA	0.7	1.0
ALBUQUERQUE	0.6	0.7
BEMIDJI	0.7	1.3
BILLINGS	0.9	1.2
CALIFORNIA	0.6	0.6
GREAT PLAINS	1.1	1.0
NASHVILLE	1.7	2.0
NAVAJO	1.0	1.0
OKLAHOMA	0.7	0.8
PHOENIX	1.5	1.7
PORTLAND	0.5	0.6
TUCSON	1.6	1.9

Percentage of ILI visits is number of ILI visits divided by total number of daily visits.

## IHS Influenza Vaccination Surveillance

- As of 12/26/2015, sites reporting to the IIAS have administered 302,929 doses (1st and 2nd) of seasonal influenza vaccine to Active Clinical patients.



## Influenza Vaccination Coverage by Age Group\*

Age Group	Active Clinical Population**	Seasonal Flu Vaccine (At Least 1 Dose)***	% Seasonal Flu (At Least 1 Dose)	Seasonal Flu Vaccine (At Least 2 Doses)	% Seasonal Flu (At Least 2 Doses)	Total #Doses Administered****
0 - 5 months	4,926	70	1.4	28	0.6	99
6 - 23 months	24,212	9,795	40.5	1,510	6.2	11,334
2 - 4 years	59,784	14,061	23.5	192	0.3	14,339
5 - 17 years	223,907	60,978	27.2	372	0.2	61,732
18 - 49 years	465,165	100,158	21.5	498	0.1	101,450
50 - 64 years	192,564	67,205	34.9	377	0.2	68,107
65 + years	108,728	45,173	41.5	378	0.3	45,967
Children (6 months-17 years)	307,903	84,834	27.6	2,074	0.7	87,405
Adults (18 + years)	766,457	212,536	27.7	1,253	0.2	215,524
All (6 months +)	1,074,360	297,370	27.7	3,327	0.3	302,929

\* Limited to sites that exported both doses administered and active clinical population data.

\*\* Active Clinical is defined as patients who have had at least 2 visits in the last 3 years.

\*\*\* Number of unique patients with at least 1 dose, doses deduplicated.

\*\*\*\* Total # Doses Administered = All doses administered to patients including doses not included in coverage calculation due to lack of Active Clinical Population data.

## Influenza Vaccination Doses Administered by Influenza Vaccination Type\*

Area	INACTIVE CVX CODES*	CVX 88 FLU-NOS**	CVX 111 FLU-LAIV3	CVX 135 FLU-HIGH	CVX 140 FLU-IIV3pf	CVX 141 FLU-IIV3	CVX 144 FLU-DER-MAL	CVX 149 FLU-LAIV4	CVX 150 FLU-IIV4pf	CVX 153 FLU-cclIV3	CVX 155 FLU-RIV3	CVX 158 IIV4	CVX 161 IIV4pf -ped	CVX 166	Proc 99.52 Vac Inf	ICD-9 V04.81 Vac Inf	CPT Billing Codes+	Cumulative # of Doses Seasonal Flu
AKA	14	203	2	205	195	888	3	717	3901	70	.	3458	330	16	.	4	109	10115
ALB	29	123	9	1394	4390	12864	1	1972	1009	1	197	1304	618	8	.	11	362	24292
BEM	135	58	5	330	386	5790	88	679	1372	2	2	744	228	2	.	65	100	9986
BIL	6	151	4	1066	7382	3722	1	1603	3160	.	.	614	322	1	.	15	120	18167
CAO	102	233	5	1283	2170	4922	9	1407	4743	.	1	4223	472	31	.	16	268	19885
GPA	205	390	38	506	4776	13995	1	1567	3452	1	4	3932	1031	3	.	30	67	29998
NSA	1	86	.	226	1348	6004	138	356	2813	1	8	250	67	274	.	8	133	11713
NAV	125	228	1	887	304	61623	1	893	8172	1	2	3751	1450	101	.	72	550	78161
OKC	465	1146	61	1954	1457	26679	33	1378	3733	1	16	2010	659	379	33	40	186	40230
PHX	15	394	2	1832	9335	17194	14	1984	7570	.	6	593	1701	16	2	42	331	41031
POR	22	475	21	881	1899	10057	3	1828	2873	15	9	2553	277	473	.	93	138	21617
TUC	.	92	1	27	4975	340	2	222	999	.	.	7	407	1	.	27	70	7170
	<b>1119</b>	<b>3579</b>	<b>149</b>	<b>10591</b>	<b>38617</b>	<b>164078</b>	<b>294</b>	<b>14606</b>	<b>43797</b>	<b>92</b>	<b>245</b>	<b>23439</b>	<b>7562</b>	<b>1305</b>	<b>35</b>	<b>423</b>	<b>2434</b>	<b>312365</b>

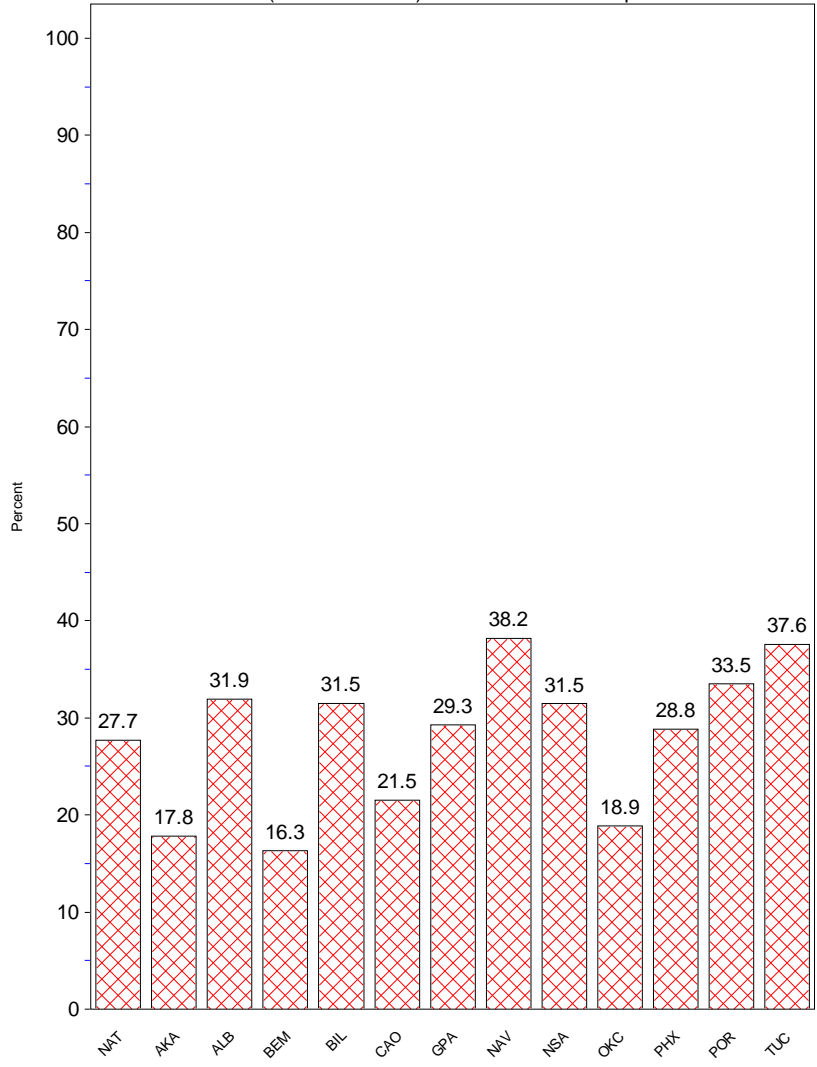
\* Inactive CVX Codes 15 (FLU-TIVhx), 16 (FLU-WHOLE), 123 (FLU-H5N1), and 151 (FLU-NasNOS) should not be used to document flu vaccines given this flu season. Doses are NOT deduplicated.

\*\* CVX Code 88 (FLU-NOS) should only be used to document flu vaccines given elsewhere when flu vaccine type is unknown.

+ CPT Flu codes include: 90654-90662, 90672-90673, 90685-90686, 90724, G0008, G8108.

^ ICD9 codes V04.8 and V06.6 are not displayed on this report and are not used in any of the influenza vaccine coverage calculations.

All IHS Areas  
Influenza Vaccine Coverage by Age Groups – All (6 mos+)  
07/05/15 to 12/26/15  
%Seasonal Flu (At least 1 dose) for Active Clinical Population



- This report includes data from the following number of Resource and Patient Management System (RPMS) databases:

<b>IHS Area</b>	<b># of RPMS Databases Reporting*</b>	<b># of Facilities Reporting**</b>
NATIONAL	160	289
ALASKA	11	49
ALBUQUERQUE	13	22
BEMIDJI	5	10
BILLINGS	13	24
CALIFORNIA	20	35
GREAT PLAINS	17	31
NASHVILLE	17	20
NAVAJO	8	21
OKLAHOMA	16	19
PHOENIX	17	29
PORTLAND	21	24
TUCSON	2	5

\* Exporting databases may include data from multiple facilities.

\*\* Includes only facility categories: Hospital, Health Center, Health Station, Health Location, Alaska Village Clinic.