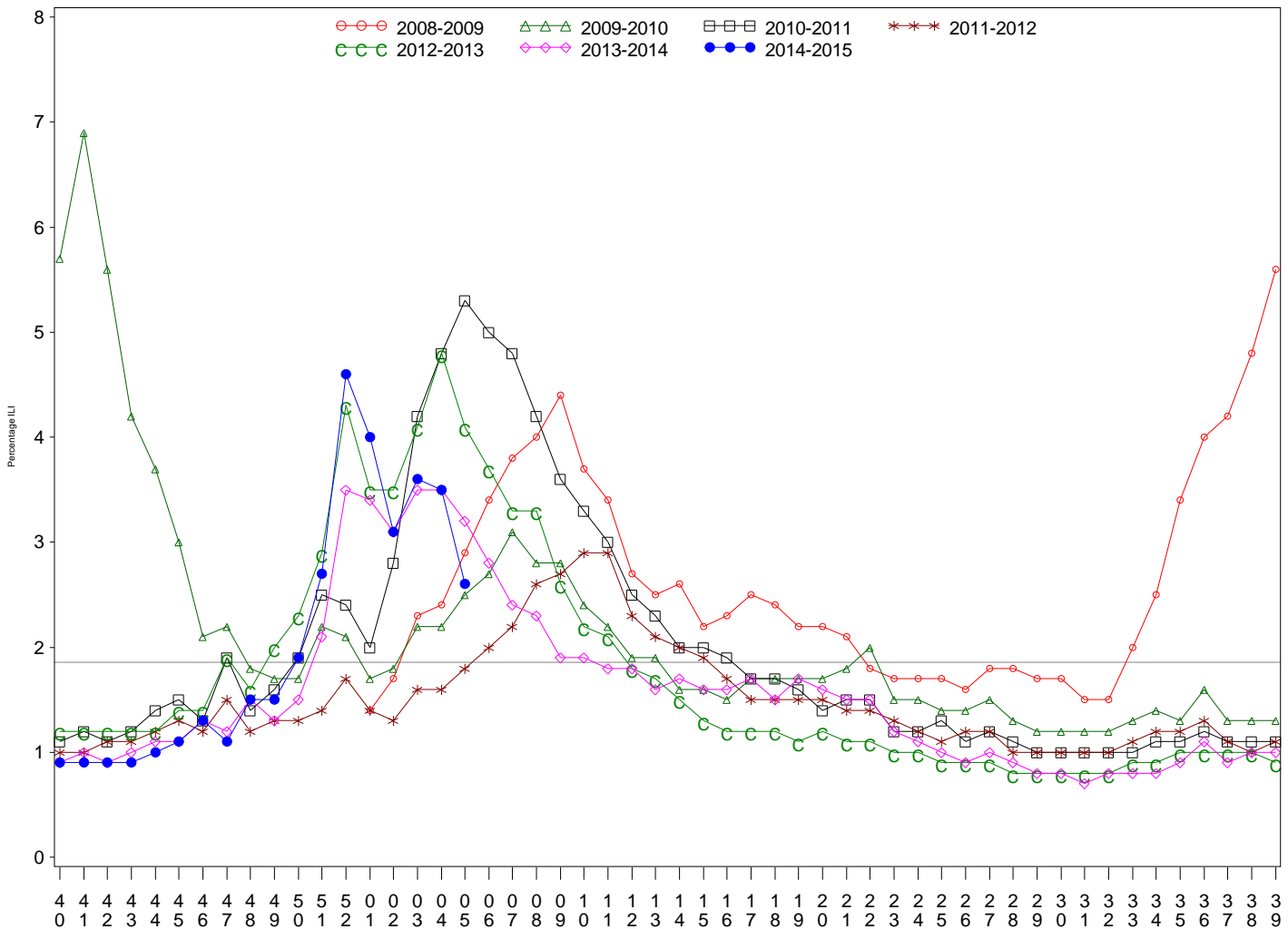




Indian Health Service
 Division of Epidemiology and Disease Prevention
Influenza Surveillance Report
IHS Influenza Awareness System (IIAS)
#18 (Week 5: 6/29/2014 – 1/31/2015)

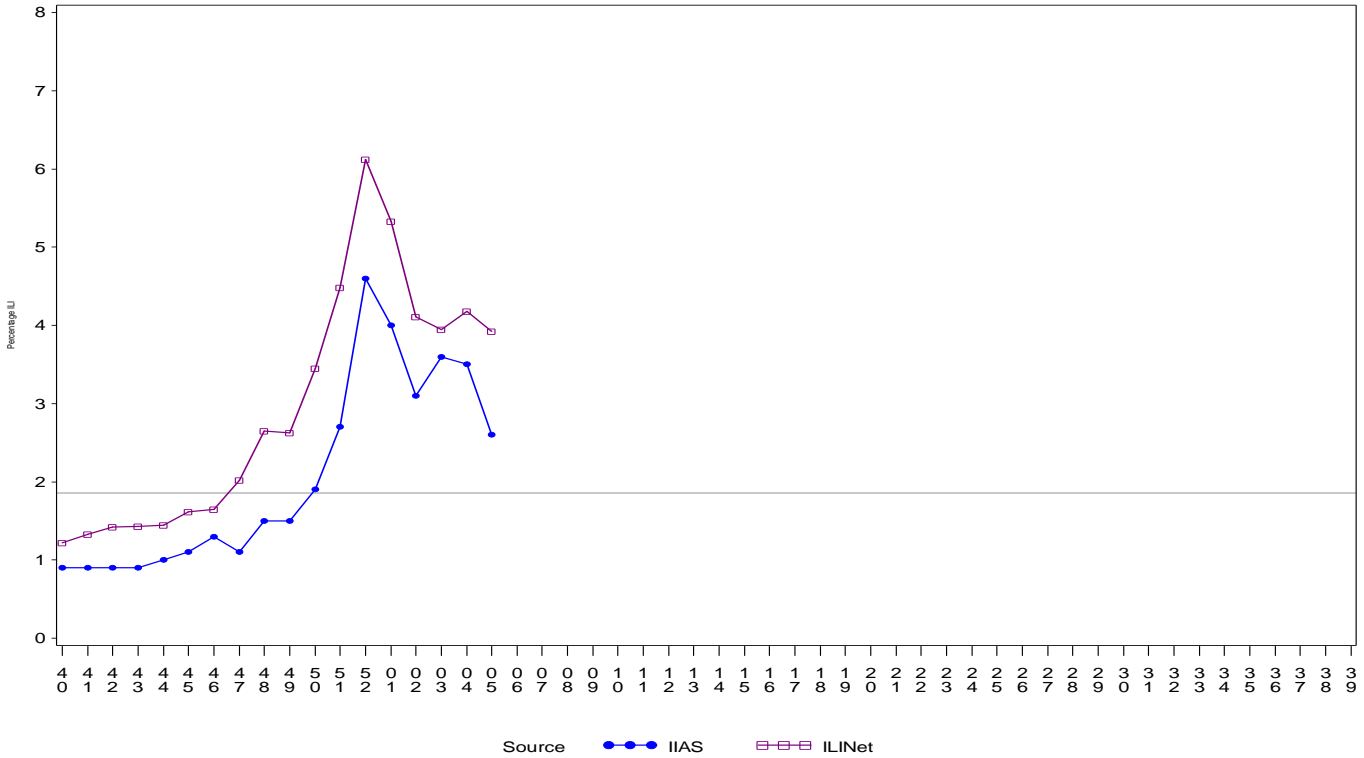
- Influenza-like-illness (ILI) activity in IHS and the U.S. is high.
- To date IHS has administered over 418,000 influenza vaccines this season.
- Overall, 34.3% of the IHS Active Clinical population received an influenza vaccine this season.

All IHS Areas
 Influenza-Like Illness (ILI) for All Surveillance Years
 Percentage of Visits for ILI per week
 01/04/09 to 1/31/15



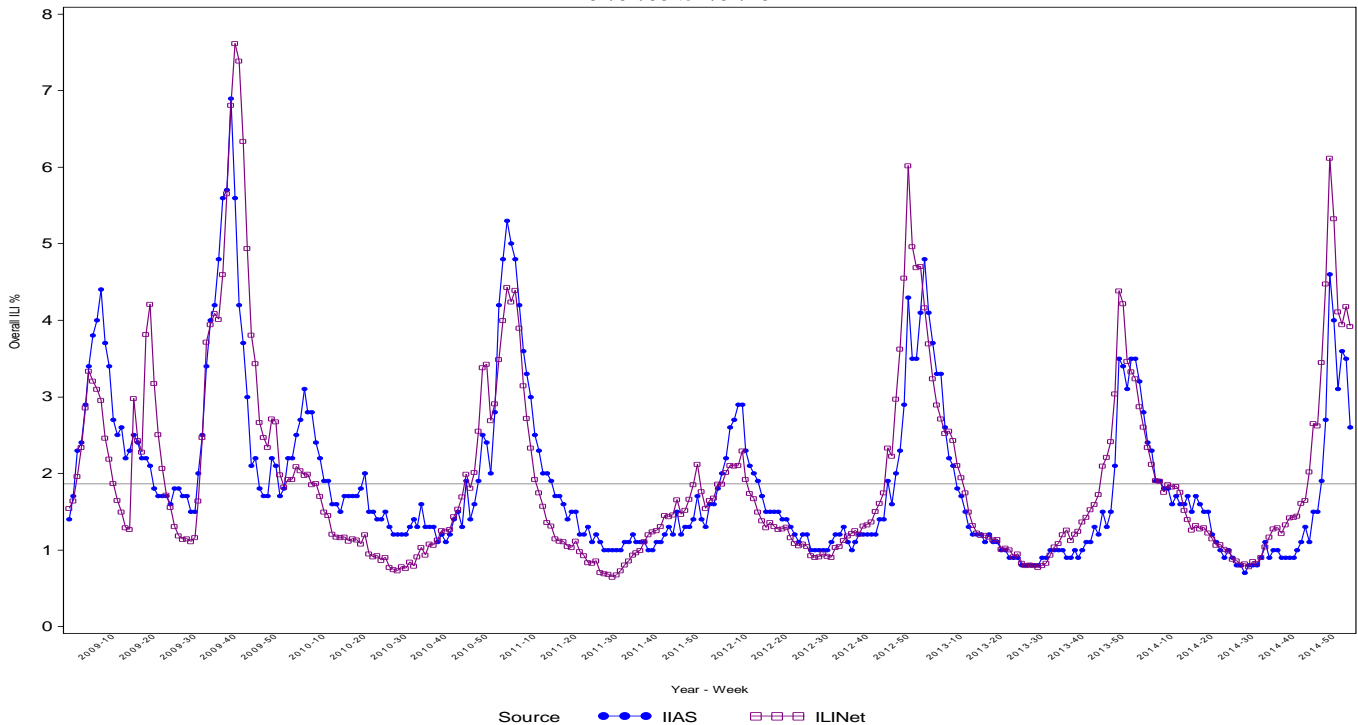
Percentage of ILI visits is number of ILI visits divided by total number of daily visits.
 The horizontal line represents the 2013-2014 baseline. The baseline is the mean percentage of patient visits for ILI during non-influenza weeks for the previous three seasons plus two standard deviations.

Proportion of Outpatient Visits for Influenza-Like Illness (ILI)
 Percent ILI for FluYear 2014 - 2015
 ILINet vs. IIAS
 09/28/14 to 1/31/15



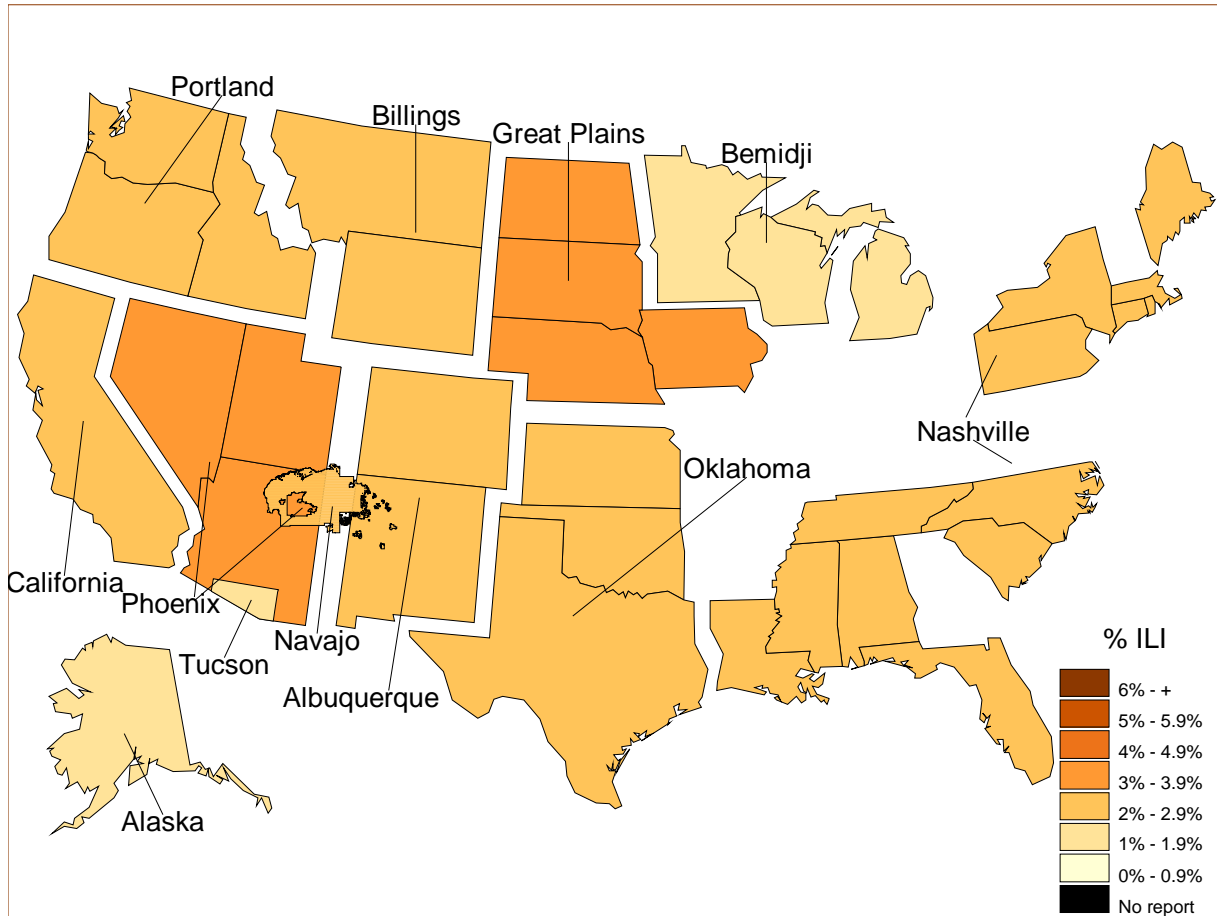
Percentage of ILI visits is number of ILI visits divided by total number of daily visits (outpatient visits).
 The horizontal line represents the 2013-2014 baseline. The baseline is the mean percentage of patient visits for ILI during non-influenza weeks for the previous three seasons plus two standard deviations.
 Sources: ILINet - CDC Sentinal Surveillance System for Influenza-Like Illness, IIAS - IHS Influenza Awareness System

IIAS versus ILINet
 Influenza-Like Illness (ILI) All Surveillance Years - Continuous
 Percentage of Visits for ILI per week
 01/04/09 to 1/31/15



Percentage of ILI visits is number of ILI visits divided by total number of daily visits (outpatient visits).

Percentage of Influenza-Like Illness Visits by IHS Area
For Week: 5



% Visits for ILI Compared to Previous Week

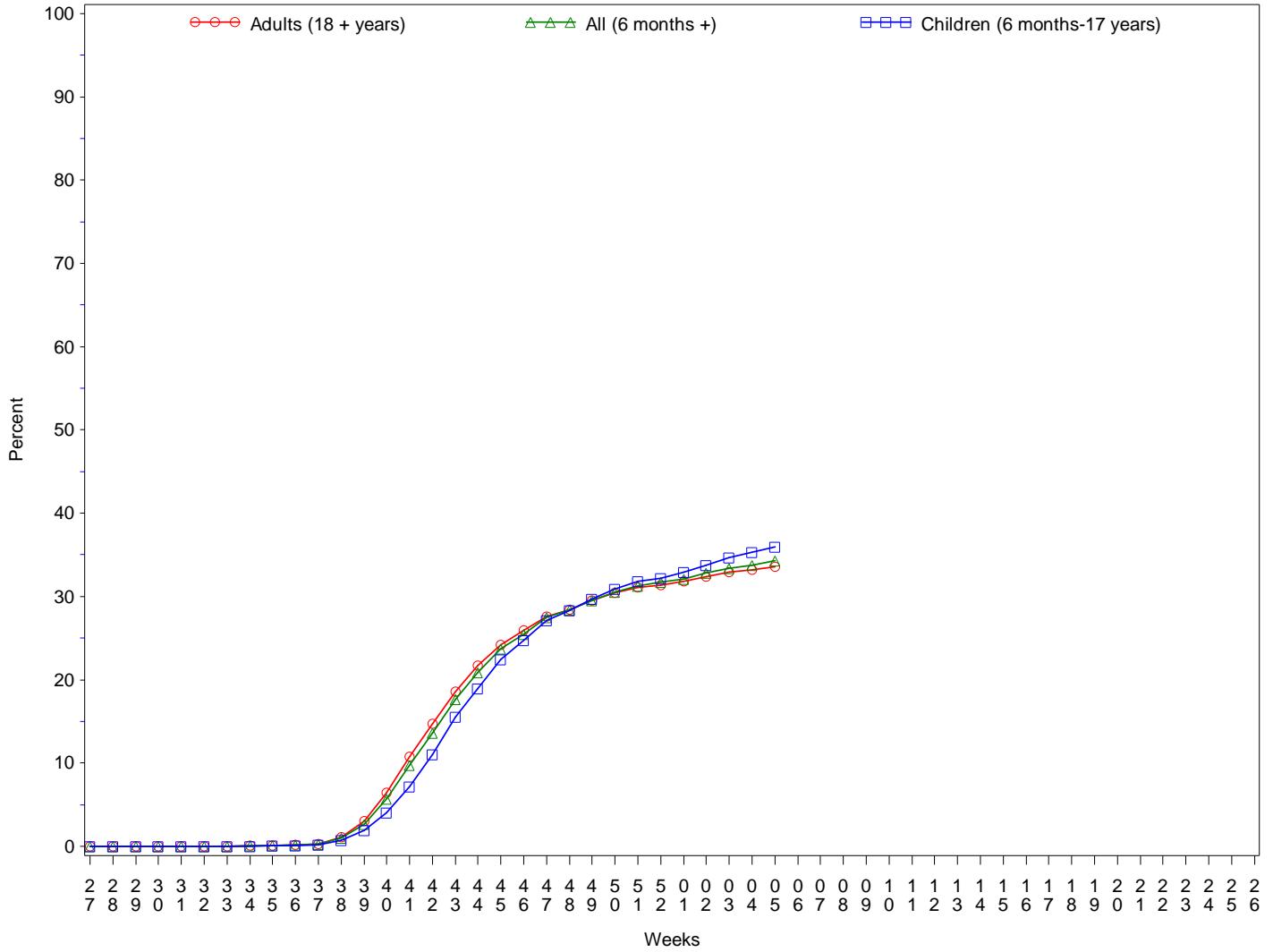
IHS Areas	% in Week 4	% in Week 5
NATIONAL	3.5	2.6
ALASKA	1.4	1.0
ALBUQUERQUE	2.8	2.3
BEMIDJI	2.2	1.8
BILLINGS	2.2	2.2
CALIFORNIA	2.8	2.6
GREAT PLAINS	4.4	3.2
NASHVILLE	3.3	2.7
NAVAJO	3.3	2.8
OKLAHOMA	4.2	2.3
PHOENIX	3.8	3.0
PORTLAND	4.5	2.8
TUCSON	2.1	1.9

Percentage of ILI visits is number of ILI visits divided by total number of daily visits.

IHS Influenza Vaccination Surveillance

- As of 1/31/2015, sites reporting to the IIAS have administered 417,737 doses (1st and 2nd) of seasonal influenza vaccine to Active Clinical patients.

All IHS Areas
 Cumulative One-Dose Seasonal Influenza Vaccine Coverage
 06/29/14 to 1/31/15
 Active Clinical Population



Influenza Vaccination Coverage by Age Group*

Age Group	Active Clinical Population**	Seasonal Flu Vaccine (At Least 1 Dose)***	% Seasonal Flu (At Least 1 Dose)	Seasonal Flu Vaccine (At Least 2 Doses)	% Seasonal Flu (At Least 2 Doses)	Total #Doses Administered****
0 - 5 months	5,458	118	2.2	4	0.1	122
6 - 23 months	27,037	15,287	56.5	3,691	13.7	19,021
2 - 4 years	65,812	21,556	32.8	498	0.8	22,132
5 - 17 years	246,931	85,526	34.6	839	0.3	86,697
18 - 49 years	521,379	137,503	26.4	1,532	0.3	139,575
50 - 64 years	210,168	88,947	42.3	1,004	0.5	90,350
65 + years	117,341	58,800	50.1	793	0.7	59,962
Children (6 months-17 years)	339,780	122,369	36.0	5,028	1.5	127,850
Adults (18 + years)	848,888	285,250	33.6	3,329	0.4	289,887
All (6 months +)	1,188,668	407,619	34.3	8,357	0.7	417,737

* Limited to sites that exported both doses administered and active clinical population data.

** Active Clinical is defined as patients who have had at least 2 visits in the last 3 years.

*** Number of unique patients with at least 1 dose.

**** Total # Doses Administered = All doses administered to patients including doses not included in coverage calculation due to lack of Active Clinical Population data.

Influenza Vaccination Doses Administered by Influenza Vaccination Type*

Area	Inactive CVX Codes*	CVX 88 FLU-NOS**	CVX 111 FLU-LAIV3	CVX 135 FLU-HIGH	CVX 140 FLU-IIV3pf	CVX 141 FLU-IIV3	CVX 144 FLU-Dermal	CVX 149 FLU-LAIV4	CVX 150 FLU-IIV4pf	CVX 153 FLU-cclIV3	CVX 155 FLU-RIV3	CVX 158 IIV4	CVX 161 IIV4pf-ped	Proc 99.52 Vac Inf	ICD-9 V04.81 Vac Inf	CPT Billing Codes+	Cumulative # of Doses Seasonal Flu
AKA	57	164	9	351	33	4380	.	848	2633	114	3	4453	2	1	187	150	13385
ALB	125	331	15	1130	521	15590	249	2658	6234	1	1	2711	60	.	133	215	29974
BEM	155	296	61	384	710	8352	36	1357	2043	5	1	607	10	.	511	95	14623
BIL	113	193	7	949	277	5239	1	2214	11411	1	.	1116	.	1	110	144	21776
CAO	135	253	5	1040	1617	14145	538	2313	4029	1	2	1498	55	.	381	464	26476
GPA	46	220	14	495	455	16509	45	3389	8245	3	3	5341	28	1	1239	63	36096
NSA	334	171	2	161	246	6694	429	692	3506	.	6	433	1	26	186	233	13120
NAV	182	495	32	457	5346	72023	.	4488	8168	2	1	6366	320	4	538	706	99128
OKC	200	3204	112	3439	259	57446	401	5566	23984	14	4	4154	4	280	1068	209	100344
PHX	98	603	9	1586	341	18803	106	4718	21167	2	5	2436	40	7	472	577	50970
POR	207	737	112	796	1347	12416	336	2829	5457	19	13	4657	184	.	343	336	29789
TUC	.	37	2	12	16	638	1	401	7477	.	1	1048	.	1	345	24	10003
	1652	6704	380	10800	11168	232235	2142	31473	104354	162	40	34820	704	321	5513	3216	445684

* Inactive CVX Codes 15 (FLU-TIVhx), 16 (FLU-WHOLE), 123 (FLU-H5N1), and 151 (FLU-NasNOS) should not be used to document flu vaccines given this flu season.

** CVX Code 88 (FLU-NOS) should only be used to document flu vaccines given elsewhere when flu vaccine type is unknown.

+ CPT Flu codes include: 90654-90662, 90672-90673, 90685-90686, 90724, G0008, G8108.

^ ICD9 codes V04.8 and V06.6 are not displayed on this report and are not used in any of the influenza vaccine coverage calculations.

- This report includes data from the following number of Resource and Patient Management System (RPMS) databases:

IHS Area	# of RPMS Databases Reporting*	# of Facilities Reporting**
NATIONAL	183	391
ALASKA	11	61
ALBUQUERQUE	15	25
BEMIDJI	10	16
BILLINGS	13	30
CALIFORNIA	27	49
GREAT PLAINS	17	32
NASHVILLE	19	27
NAVAJO	7	31
OKLAHOMA	20	47
PHOENIX	16	31
PORTLAND	26	35
TUCSON	2	7

* Exporting databases may include data from multiple facilities.

** Includes only facility categories: Hospital, Health Center, Health Station, Health Location, Alaska Village Clinic.