

BCMA Inpatient Medications Menu

Generic BCMA Inpatient Medications Menu

Figure 1 displays a generic **BCMA Inpatient Medications** menu:

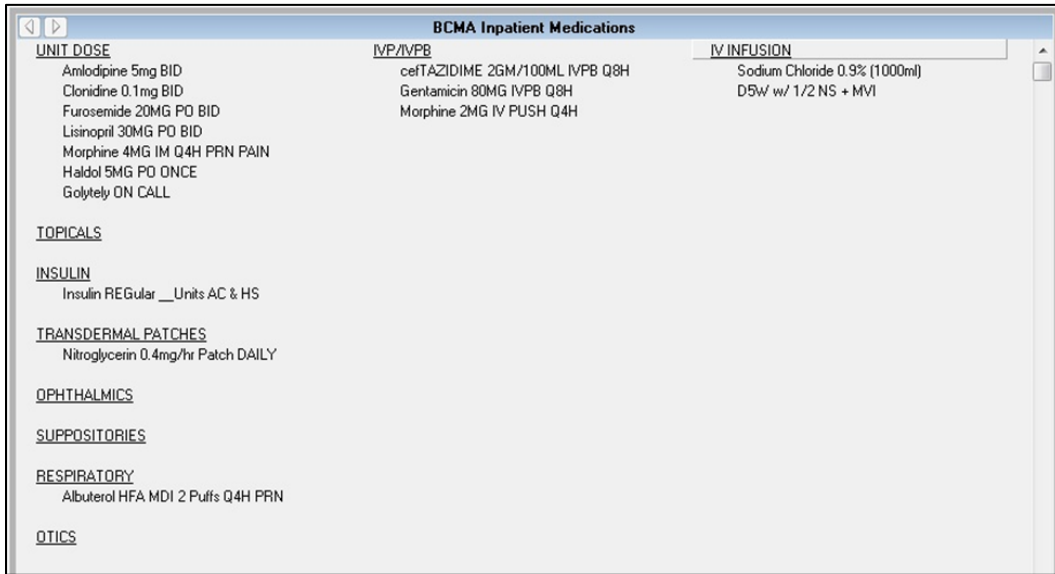


Figure 1: **BCMA Inpatient Medications** training menu

Sample BCMA Training Menus

Figure 2 through Figure 7 display sample BCMA training menus:

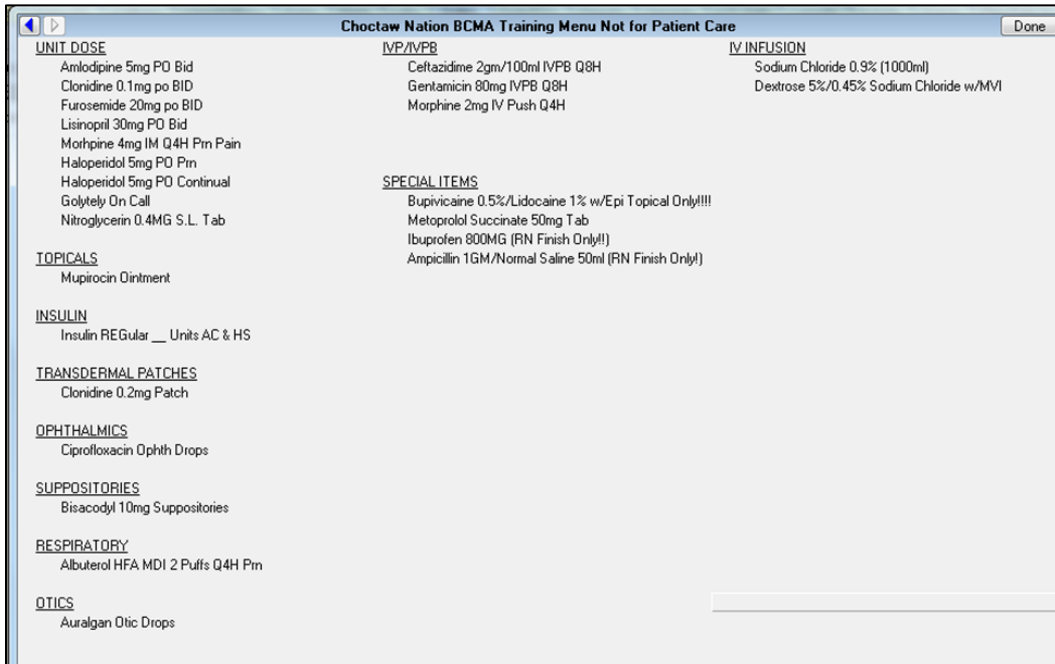


Figure 2: **BCMA (Inpatient Medications) Training Menu**, Choctaw Nation Health Care Center

BCMA Inpatient Medications Menu

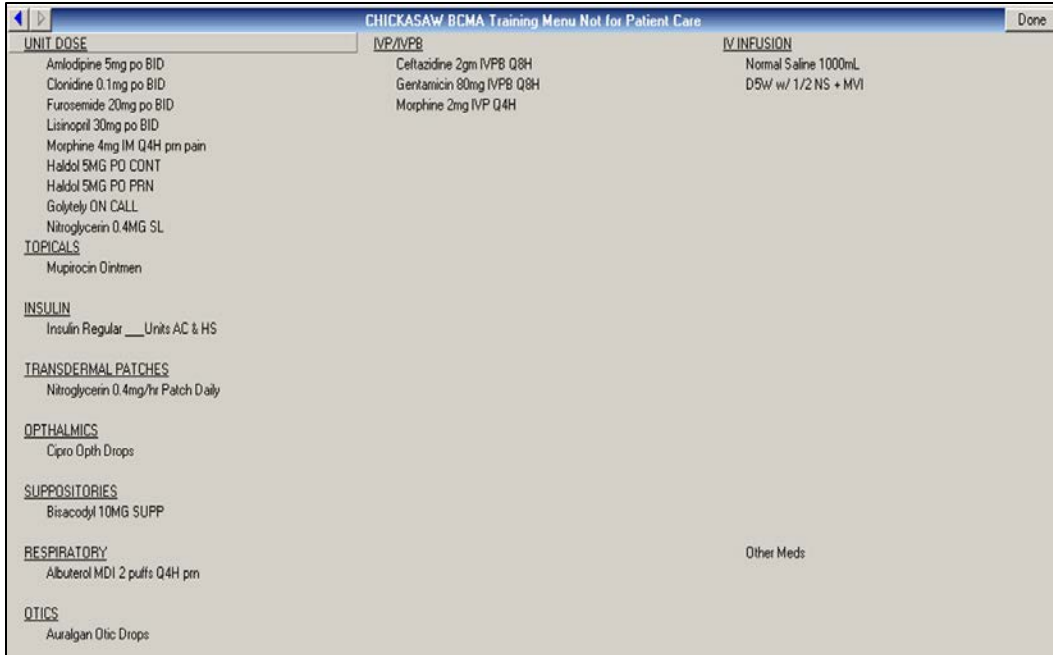


Figure 3: **BCMA (Inpatient Medications) Training Menu**, Chickasaw Nation Medical Center

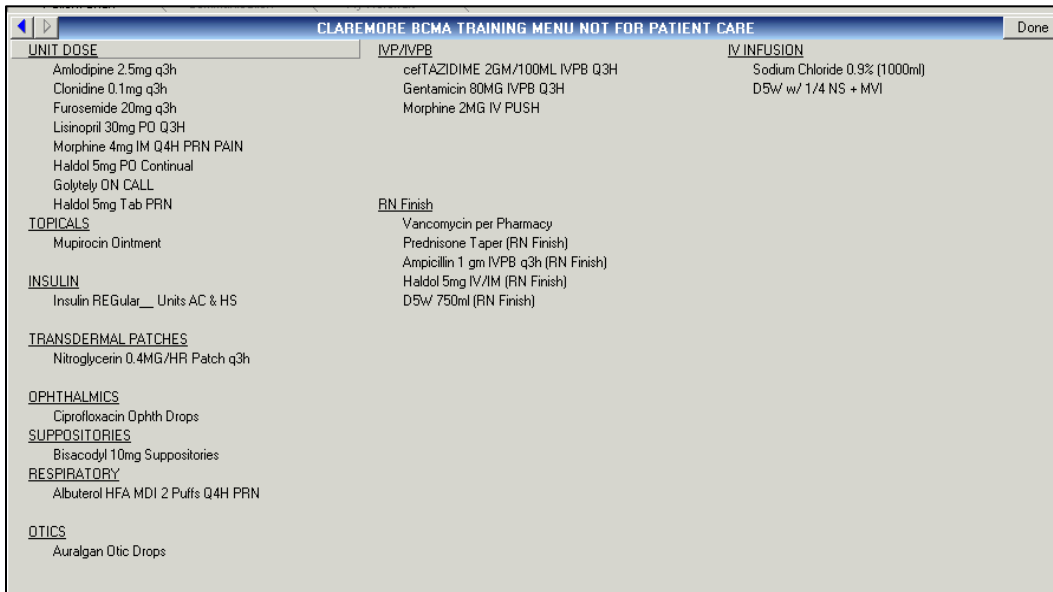


Figure 4: **BCMA (Inpatient Medications) Training Menu**, Claremore Indian Hospital

BCMA Inpatient Medications Menu



Figure 5: **BCMA (Inpatient Medications) Training** menu, Whiteriver Hospital

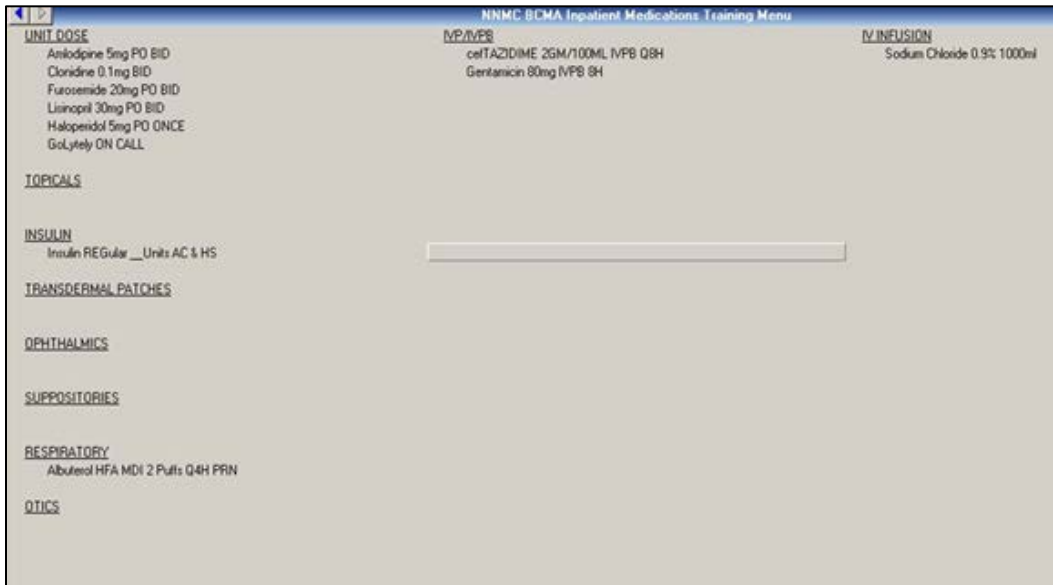


Figure 6: **BCMA Inpatient Medications Training** Menu, Northern Navajo Medical Center

BCMA Inpatient Medications Menu

The screenshot shows a software window titled "GALLUP INDIAN MEDICAL CENTER BCMA TEST MENU" with a "Done" button in the top right corner. The window is divided into three columns: "UNIT DOSE", "IVP/IVPB", and "IV INFUSION".

UNIT DOSE	IVP/IVPB	IV INFUSION
amlODIPine 5mg po BID	ceftAZidime 2gm IVPB Q8H	Sodium Chloride 0.9% (1000mL)
Clonidine 0.1mg PO BID	Gentamicin 80mg IVPB Q8H	D5 1/2 NS + MVI
Furosemide 20mg po BID	morphine 2mg IV PUSH Q4H	
Lisinopril 30mg PO BID	KCL 40 mEq IVPB ONCE	
morphine 4mg IM Q4H PRN		
Haloperidol 5mg PO ONCE		
Golytely ON CALL		

TOPICALS
Clotrimazole 1% apply BID

INSULIN
Insulin Regular SSI Low Scale QAC&

TRANSDERMAL PATCHES
Nitroglycerin PATCH 0.4mg/hr DAIL^

OPHTHALMICS
Saline eye dops PRN

SUPPOSITORIES
Promethazine 25mg suppository Q6H

RESPIRATORY
Albuterol HFA 2 puffs Q4H PRN

OTICS

Figure 7: **BCMA** (Inpatient Medications) **Test Menu**, Gallup Indian Medical Center