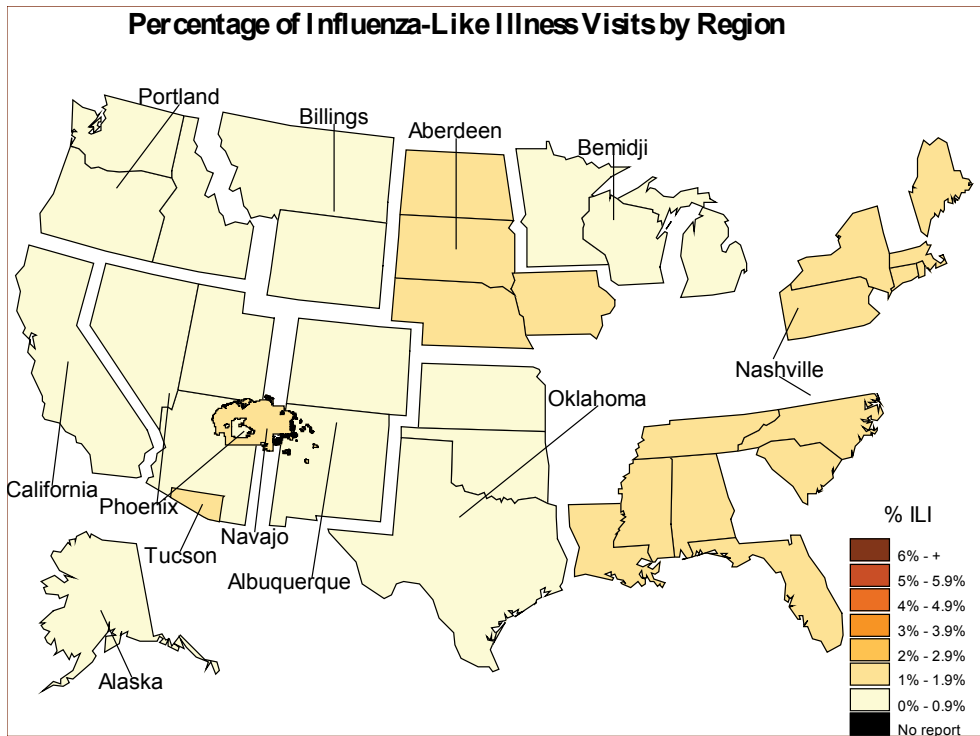
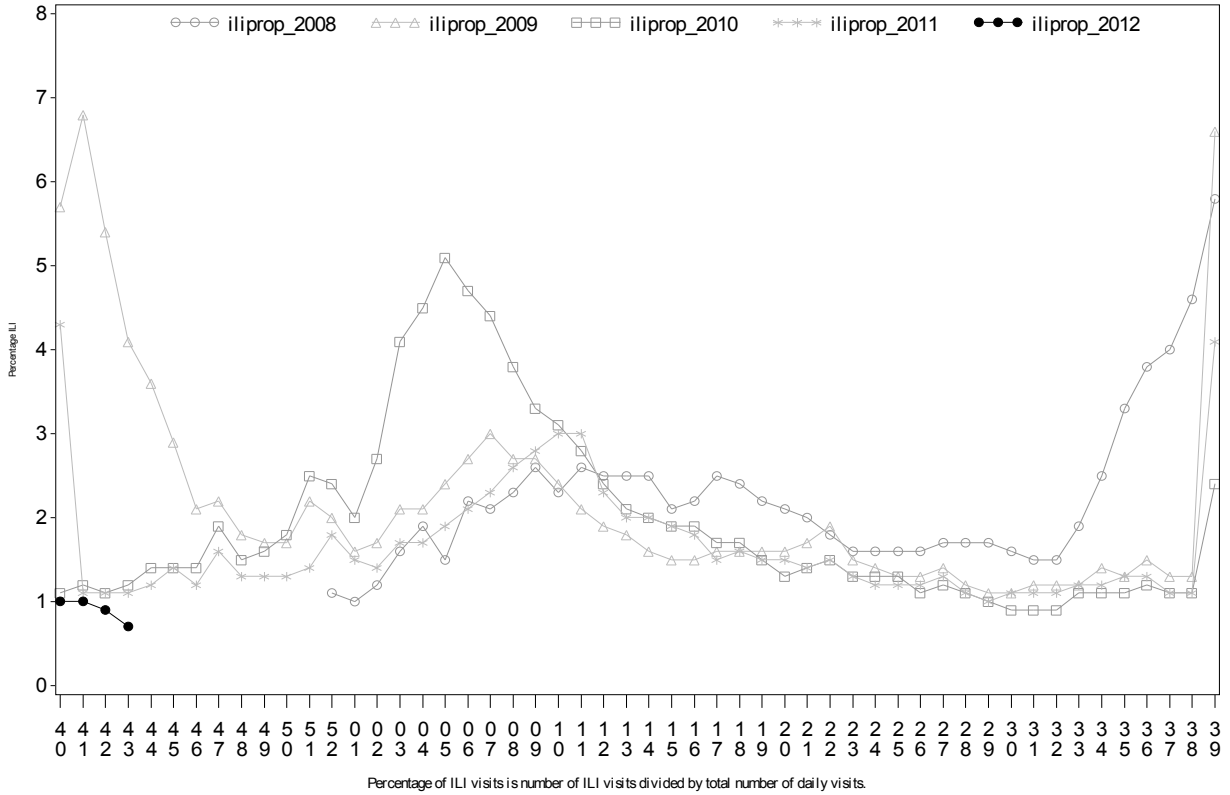




**Indian Health Service**  
 Division of Epidemiology and Disease  
 Prevention  
 Influenza Surveillance Report  
**IHS Influenza Awareness System (IIAS)**  
**#4 (Week 43: 10/21/2012 – 10/27/2012)**

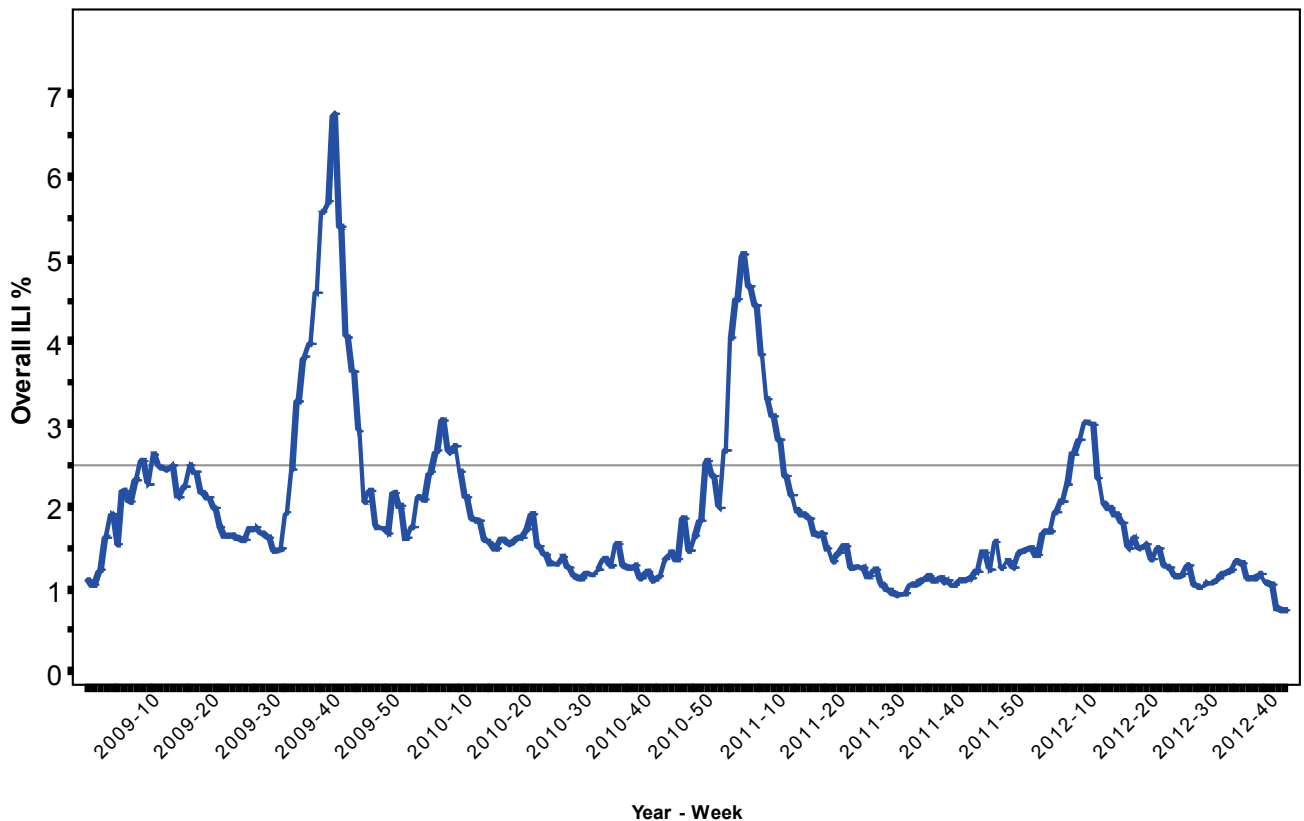
**All IHS Areas**  
**Influenza-Like Illness (ILI) for All Surveillance Years**  
**Percentage of Visits for ILI per week**  
**28DEC2008 to 27OCT2012**



**Percent ILI Visits  
Current week compared to previous week**

<b>IHS Areas</b>	<b>% in Week 42</b>	<b>% in Week 43</b>
NATIONAL	0.9	0.7
ABERDEEN	1.3	1.5
ALASKA	0.8	0.1
ALBUQUERQUE	0.8	0.4
BEMIDJI	0.7	0.7
BILLINGS	0.6	0.5
CALIFORNIA	0.6	0.4
NASHVILLE	1.1	1.5
NAVAJO	1.7	1.0
OKLAHOMA	0.5	0.4
PHOENIX	0.9	0.6
PORTLAND	0.6	0.6
TUCSON	0.8	1.6

**Percentage of Visits for Influenza-like Illness (ILI) per week**  
**Overall ILI % (ILI visits per week / Total visits per week)**  
 (ILI) in IHS, 03/23/2009  
 through 10/27/2012

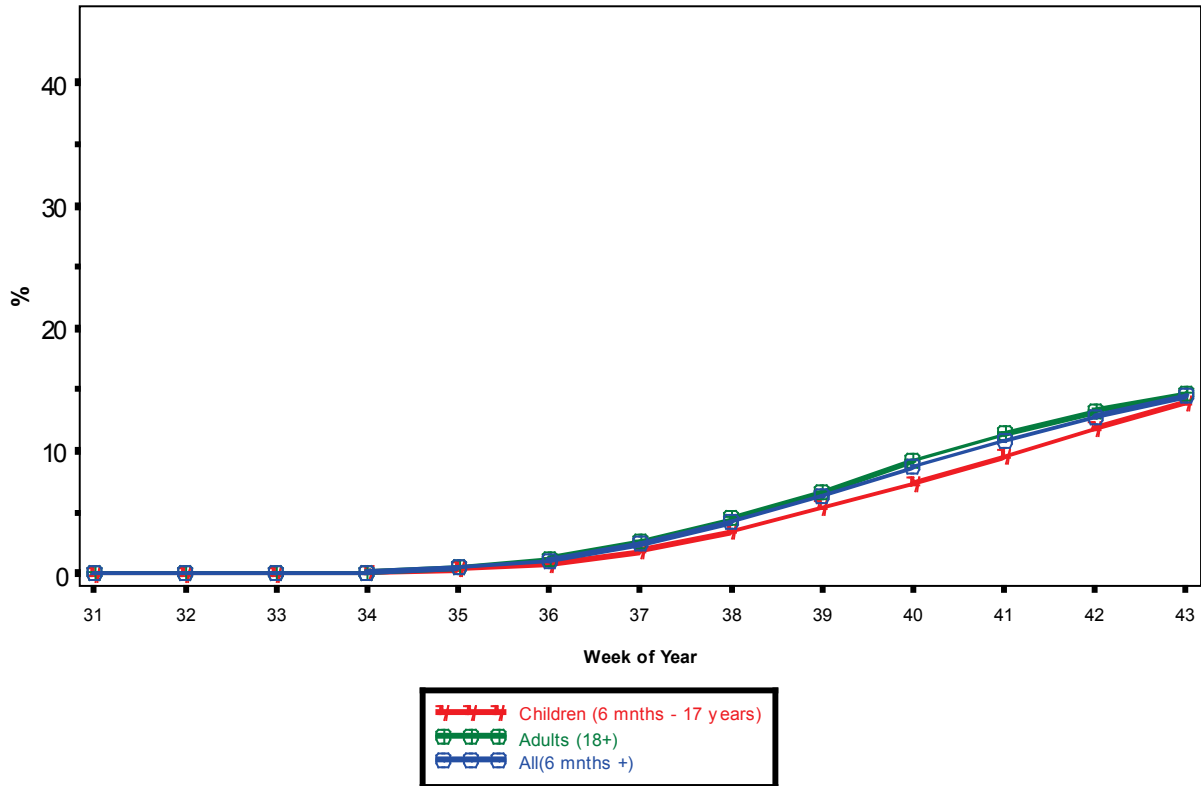


**All data are preliminary and may change as more reports are received.**  
 The baseline is the mean percentage of patient visits for ILI during non-influenza weeks for the previous two seasons plus two standard deviations.

## IHS Influenza Vaccination Surveillance

- As of 10/27/2012, sites reporting to the IIAS have administered 191,991 doses (1st and 2nd) of seasonal influenza vaccine to Active Clinical\* patients.

### Influenza Vaccine Coverage, IHS Influenza Awareness System Weeks 31 (07/29/2012) through 43 (10/27/2012), 2012 - 2013



(Active Clinical Population covered by the IIAS)  
(\*Includes all doses administered.)

### Influenza Vaccination Coverage by Age Group\*\*

Age Group	Active Clinical Population*	1 dose Seasonal Flu Vaccine	% Seasonal flu (1 dose)	2 dose Seasonal Flu Vaccine	% Seasonal flu (2 dose)
6-23 months	29,474	6,583	22.3	634	2.2
2-4 years	75,809	10,174	13.4	505	0.7
5-17 years	260,716	36,798	14.1	.	.
18-49 years	561,224	67,128	12.0	.	.
50-64 years	206,439	42,104	20.4	.	.
65+ years	113,129	28,065	24.8	.	.
Children (6 mnths - 17 years)	365,999	53,555	14.6	.	.
Adults (18+)	880,792	137,297	15.6	.	.
All (6 mnths +)	1,246,791	190,852	15.3	.	.

\* Active Clinical population is defined as patients who have had at least 2 visits in the last 3 years

\*\* Limited to sites that exported both doses administered and active clinical population data

## Influenza Vaccination Coverage by Influenza Vaccination Type

	CVX 15 Flu HX*	CVX 16 Flu Whole*	CVX 88 Flu NOS**	CVX 111 Flu-Nasal	CVX 135 Flu-High	CVX 140 Flu P-free	CVX 141 Flu	CVX 144 Flu- Intraderm	Proc 99.52 Vac Inf	ICD- 9 V04.81 Vac Flu	CPT Billing Codes+	Cumulative # of Doses Seasonal Flu
ABD	1768	.	9	1679	197	3412	11862	11	1	1120	117	20176
AK	2	.	3	40	189	2641	963	.	214	39	289	4380
ABQ	217	.	138	345	225	1575	6347	.	.	76	81	9004
BEM	183	4	148	345	30	1043	4569	2	.	495	56	6875
BIL	51	.	28	1328	404	5630	5788	5	.	100	144	13478
CA	200	.	104	717	381	1365	6884	527	.	134	113	10425
NASH	2629	10	182	255	6	622	1332	53	.	195	50	5334
NAV	78	.	57	821	22	3342	39655	4	15	139	372	44505
OK	9809	3	419	1837	932	8267	21631	147	9	690	256	44000
PHX	690	.	46	1331	337	8980	14517	54	3	176	296	26430
PORT	61	.	159	711	111	1658	7963	9	.	183	115	10970
TUC	3	.	6	16	.	2832	1486	.	.	85	49	4477
<b>Total</b>	<b>15691</b>	<b>17</b>	<b>1299</b>	<b>9425</b>	<b>2834</b>	<b>41367</b>	<b>122997</b>	<b>812</b>	<b>242</b>	<b>3432</b>	<b>1938</b>	<b>200054</b>

\* CVX Codes 15 and 16 should not be used to document flu vaccines given this flu season.

\*\* CVX Code 88 should only be used to document flu vaccines given elsewhere when flu vaccine type is unknown.

+ CPT Flu codes include: 90654 90655 90656 90657 90658 90659 90660 90661 90662 90724 G0008 G8108.

## Summary

- This report includes data from the following # of RPMS databases:

<b>IHS Area</b>	<b># of ILI RPMS Databases Reporting</b>
Aberdeen	17
Alaska	6
Albuquerque	6
Bemidji	4
Billings	8
California	18
Nashville	13
Navajo	6
Oklahoma	21
Phoenix	18
Portland	21
Tucson	1
All Areas	139

- Nationwide, ILI is low.
- Influenza vaccination is underway.