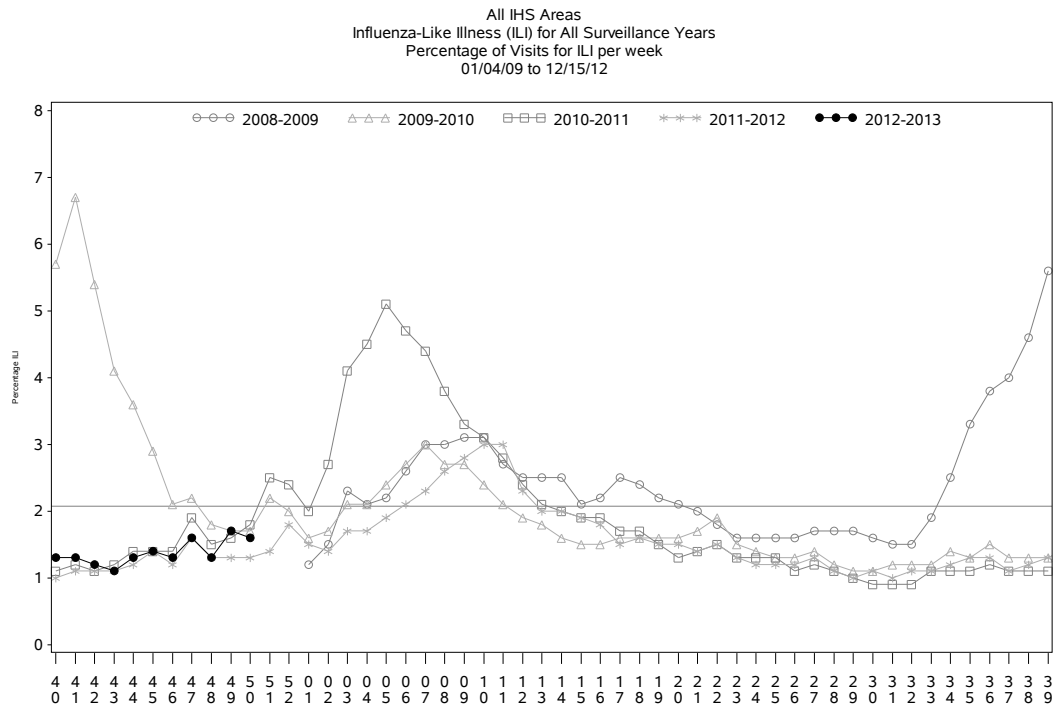




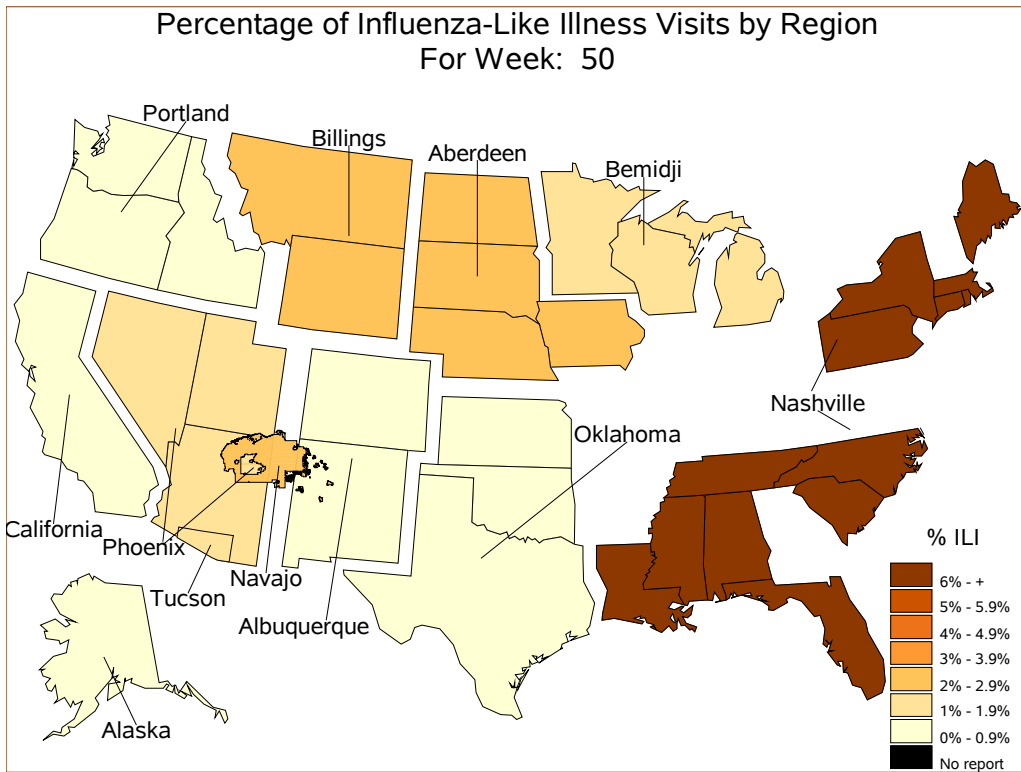
Indian Health Service
 Division of Epidemiology and Disease Prevention
 Influenza Surveillance Report
IHS Influenza Awareness System (IIAS)
#11 (Week 50: 12/09/2012 – 12/15/2012)

Summary

- Influenza activity is increasing, particularly in certain regions.
- Influenza vaccine coverage is increasing, but many patients remain unvaccinated.



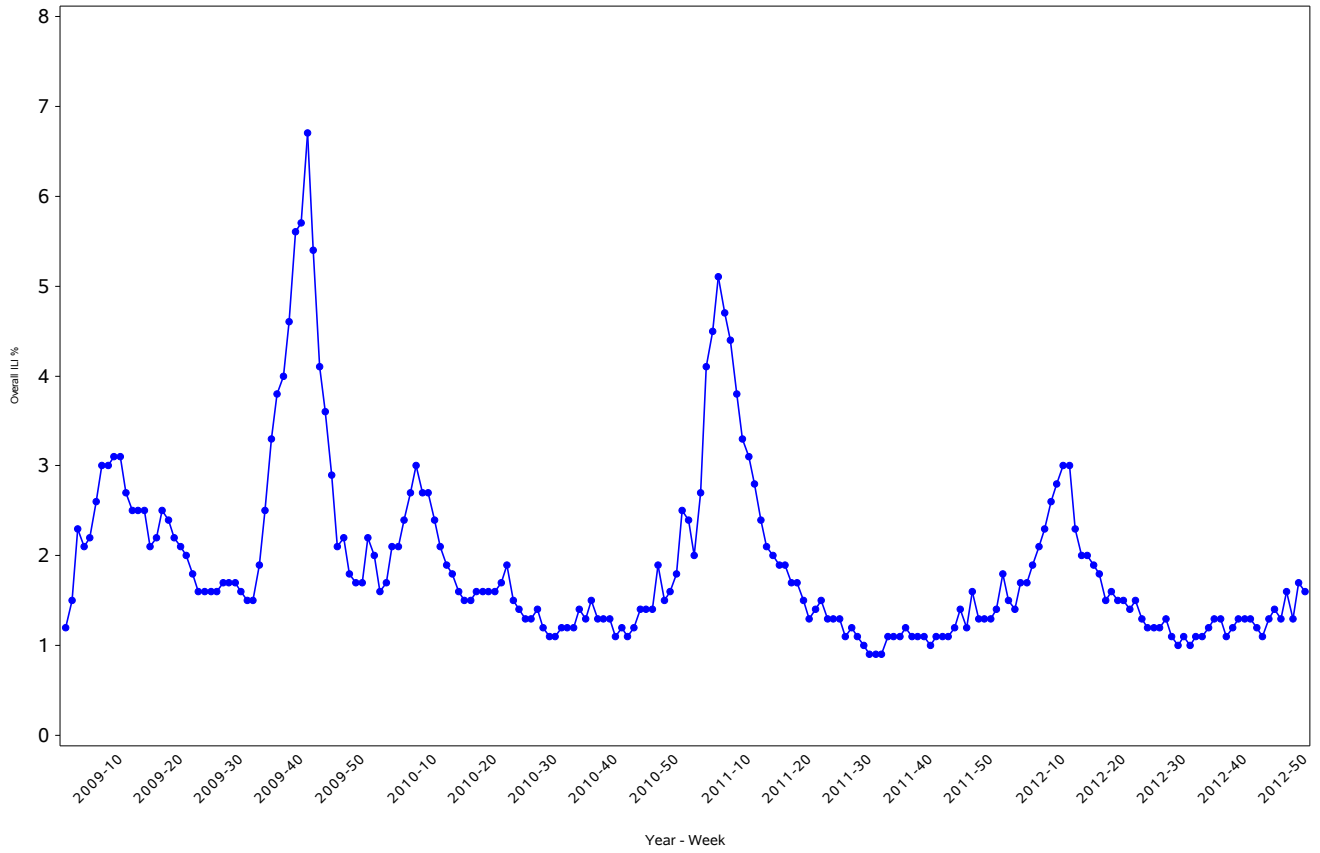
Percentage of ILI visits is number of ILI visits divided by total number of daily visits.
 The horizontal line represents the 2012-2013 baseline. The baseline is the mean percentage of patient visits for ILI during non-influenza weeks for the previous three seasons plus two standard deviations.



**Percent ILI Visits
Current week compared to previous week**

IHS Areas	% in Week 49	% in Week 50
NATIONAL	1.7	1.6
ABERDEEN	2.2	2.2
ALASKA	0.4	0.3
ALBUQUERQUE	1.2	0.8
BEMIDJI	0.6	1.4
BILLINGS	1.6	2.0
CALIFORNIA	0.8	0.5
NASHVILLE	6.0	6.2
NAVAJO	3.1	2.8
OKLAHOMA	1.0	0.8
PHOENIX	1.5	1.4
PORTLAND	0.7	0.9
TUCSON	1.9	1.0

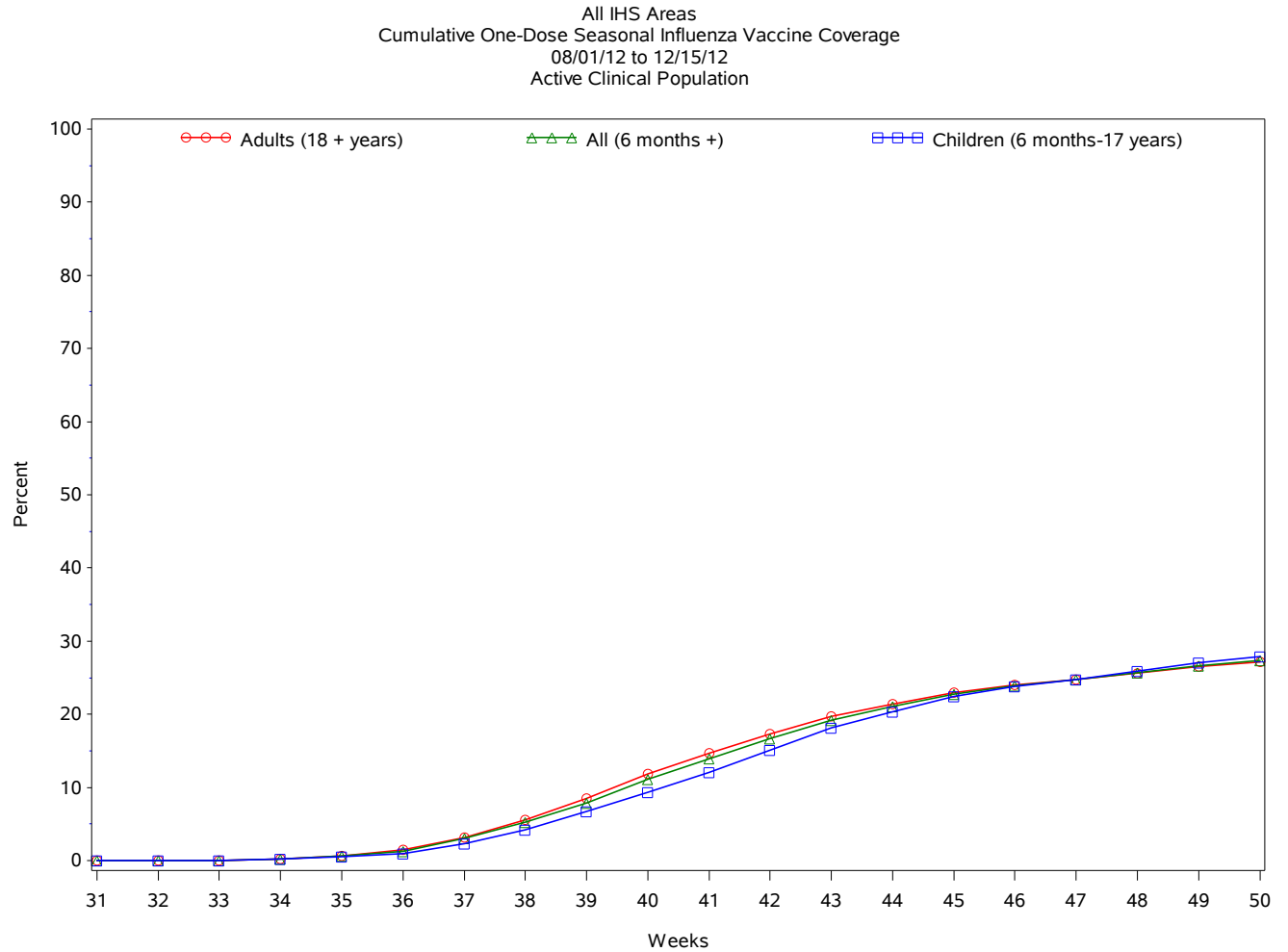
All IHS Areas
Influenza-Like Illness (ILI) All Surveillance Years - Continuous
Percentage of Visits for ILI per week
01/04/09 to 12/15/12



Percentage of ILI visits is number of ILI visits divided by total number of daily visits.

IHS Influenza Vaccination Surveillance

- As of 12/15/2012, sites reporting to the IIAS have administered 311,469 doses of seasonal influenza vaccine. Coverage estimates below exclude sites that did not provide Active Clinical User denominator data.



Influenza Vaccination Coverage by Age Group*

Age Group	Active Clinical Population**	Seasonal Flu Vaccine (At least 1 Dose)***	% Seasonal Flu (At least 1 Dose)	Seasonal Flu Vaccine (At least 2 Doses)	% Seasonal Flu (At least 2 Doses)	Total # Doses Administered****
0 - 5 months	5,271	317	6.0	48	0.9	366
6 - 23 months	26,278	11,506	43.8	2,268	8.6	14,045
2 - 4 years	65,394	16,849	25.8	513	0.8	17,851
5 - 17 years	227,114	60,739	26.7	692	0.3	63,846
18 - 49 years	483,787	103,077	21.3	1,130	0.2	107,558
50 - 64 years	176,806	62,523	35.4	766	0.4	65,539
65 + years	96,345	40,380	41.9	621	0.6	42,630
Children (6 months-17 years)	318,786	89,094	27.9	3,473	1.1	95,742
Adults (18 + years)	756,938	205,980	27.2	2,517	0.3	215,727
All (6 months +)	1,075,724	295,074	27.4	5,990	0.6	311,469

* Limited to sites that exported both doses administered and active clinical population data.

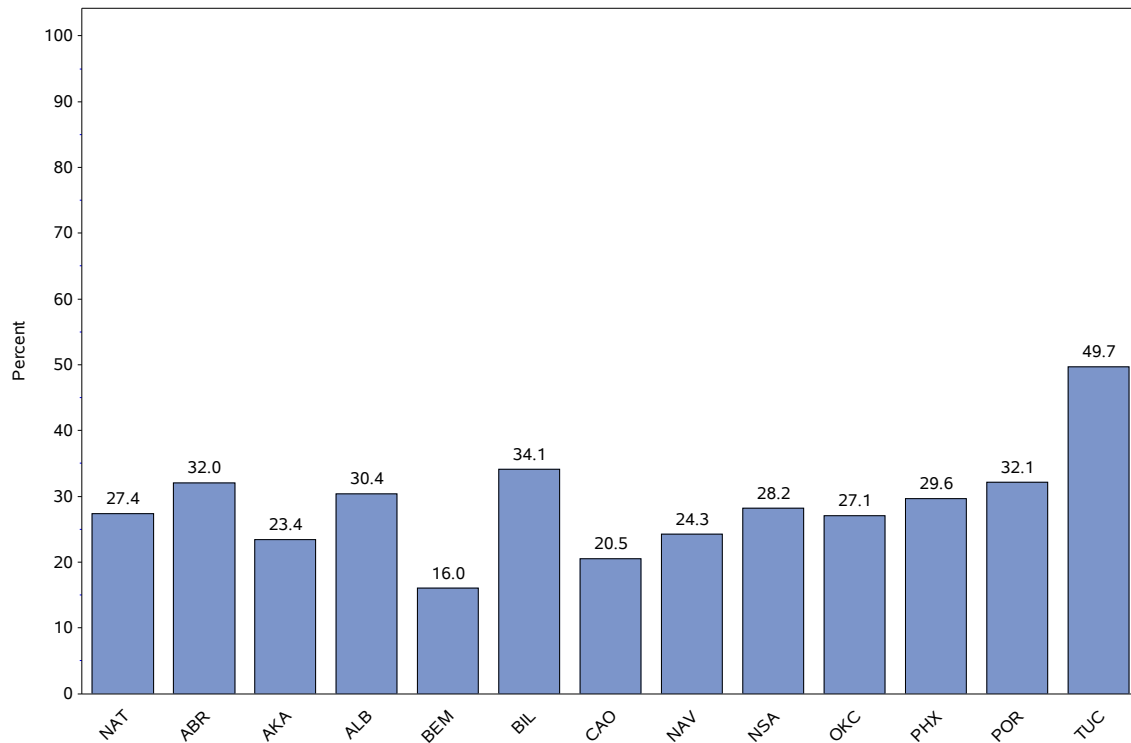
** Active Clinical is defined as patients who have had a least 2 visits in the last 3 years.

*** Number of unique patients with at least 1 dose.

**** Total # Doses Administered = All doses administered to patients including doses not included in coverage calculation due to lack of Active Clinical Population data.

Influenza Vaccine Coverage by IHS Area – 1 dose, 6 Months and older

All IHS Areas
Influenza Vaccine Coverage by Age Groups - All (6 months +)
for National and Area
08/01/12 to 12/15/12



Influenza Vaccination Codes

Area	CVX 15 Flu HX*	CVX 16 Flu Whole*	CVX 88 Flu NOS**	CVX 111 Flu- Nasal	CVX 135 Flu- High	CVX 140 Flu P-free	CVX 141 Flu	CVX 144 Flu- Intraderm	Proc 99.52 Vac Inf	ICD- 9 V04.81 Vac Flu	CPT Billing Codes+	Cumulative # of Doses Seasonal Flu
ABR	2761	.	47	2476	263	4928	18746	19	3	1686	163	31092
AKA	268	.	12	537	54	5063	5592	43	406	57	1160	13192
ALB	1127	.	199	1285	469	3252	12964	146	.	183	179	19804
BEM	197	5	225	447	30	1338	6214	3	.	524	61	9044
BIL	109	.	109	2259	514	9086	8387	6	.	179	195	20844
CAO	336	.	174	1155	518	2377	10728	783	.	256	200	16527
NSA	3957	13	279	500	10	1692	3220	127	.	243	117	10158
NAV	116	.	197	1359	34	4805	51238	5	19	178	695	58646
OKC	12232	5	1658	3310	1408	13486	42331	337	70	1126	520	76483
PHX	851	.	135	2546	518	14105	23341	56	5	317	486	42360
POR	143	1	445	1640	217	2962	14509	85	.	268	322	20592
TUC	3	.	13	47	1	4409	2189	.	1	143	89	6895
	22100	24	3493	17561	4036	67503	199459	1610	504	5160	4187	325637

Exporting Databases and Facilities.

IHS Area	# of RPMS Databases Reporting*	# of Facilities Reporting**
NATIONAL	148	316
ABERDEEN	17	30
ALASKA	7	40
ALBUQUERQUE	6	8
BEMIDJI	4	10
BILLINGS	13	25
CALIFORNIA	19	35
NASHVILLE	15	22
NAVAJO	6	27
OKLAHOMA	22	48
PHOENIX	17	35
PORTLAND	21	26
TUCSON	1	10

* Exporting databases may include data from multiple facilities.

** Includes only facility categories: Hospital, Health Center, Health Station, Health Location, Alaska Village Clinic.