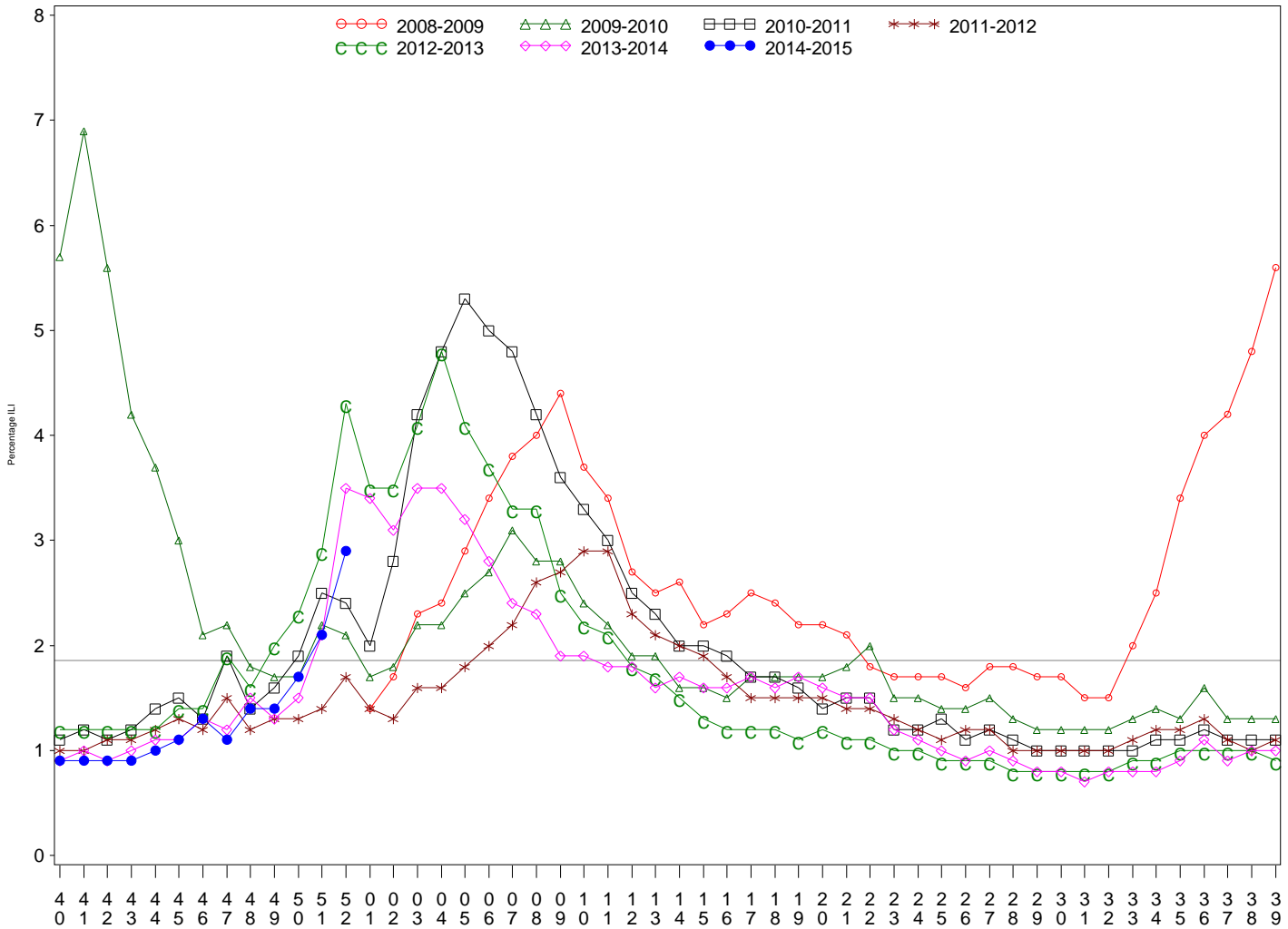




Indian Health Service
 Division of Epidemiology and Disease Prevention
Influenza Surveillance Report
IHS Influenza Awareness System (IIAS)
#13 (Week 52: 6/29/2014 – 12/27/2014)

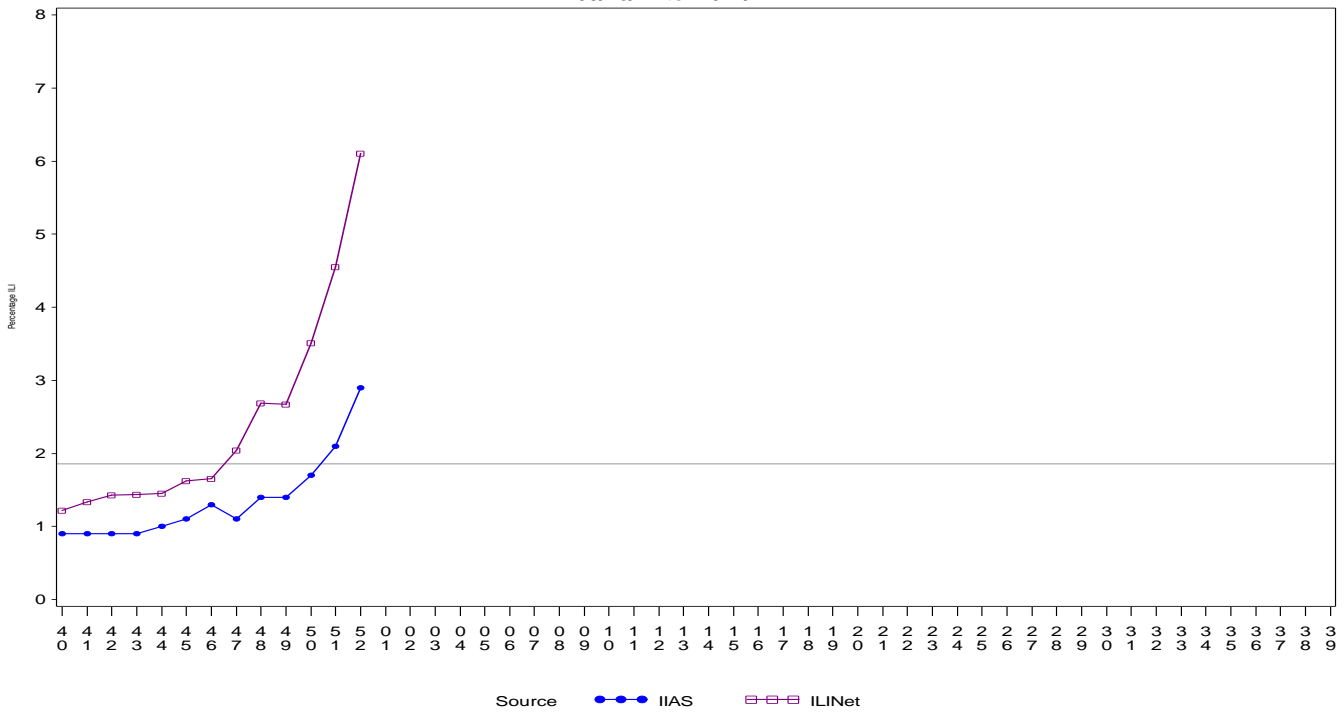
- Influenza-like-illness (ILI) activity in IHS and the U.S. is increasing.
- To date IHS has administered over 374,000 influenza vaccines this season.
- Overall, 31.1% of the IHS Active Clinical population received an influenza vaccine this season.

All IHS Areas
Influenza-Like Illness (ILI) for All Surveillance Years
 Percentage of Visits for ILI per week
 01/04/09 to 12/27/14



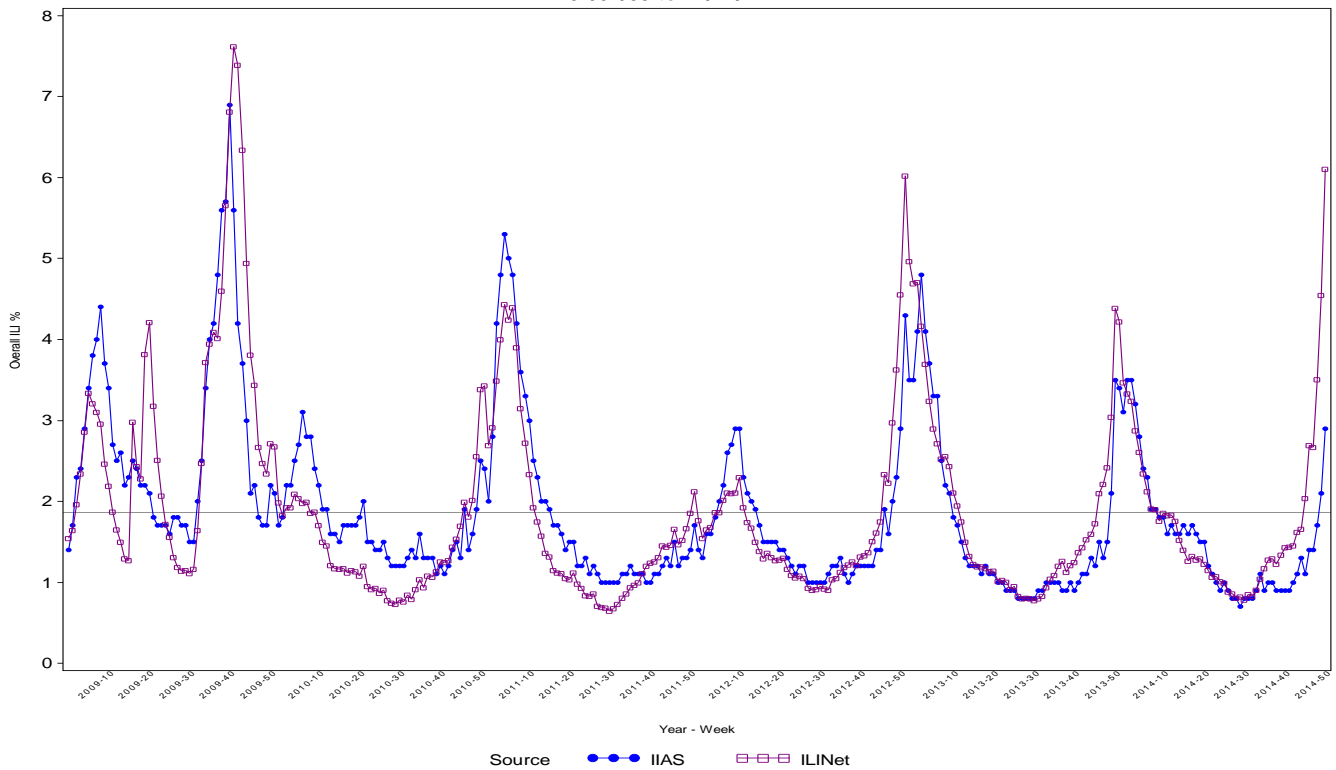
Percentage of ILI visits is number of ILI visits divided by total number of daily visits.
 The horizontal line represents the 2013-2014 baseline. The baseline is the mean percentage of patient visits for ILI during non-influenza weeks for the previous three seasons plus two standard deviations.

Proportion of Outpatient Visits for Influenza-Like Illness (ILI)
Percent ILI for FluYear 2014 - 2015
ILINet vs. IIAS
09/28/14 to 12/27/14



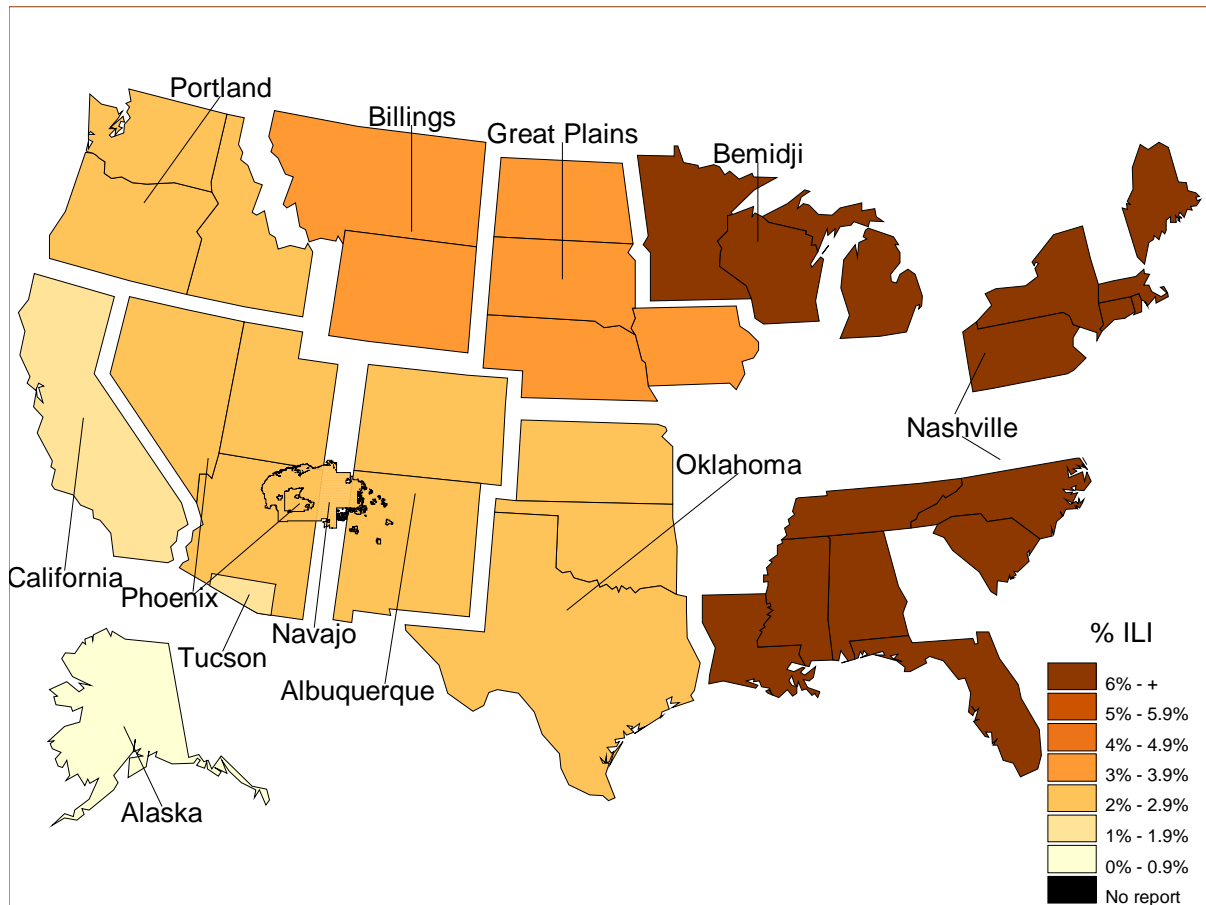
Percentage of ILI visits is number of ILI visits divided by total number of daily visits (outpatient visits).
 The horizontal line represents the 2013-2014 baseline. The baseline is the mean percentage of patient visits for ILI during non-influenza weeks for the previous three seasons plus two standard deviations.
 Sources: ILINet - CDC Sentinal Surveillance System for Influenza-Like Illness, IIAS - IHS Influenza Awareness System

IIAS versus ILINet
Influenza-Like Illness (ILI) All Surveillance Years - Continuous
Percentage of Visits for ILI per week
01/04/09 to 12/27/14



Percentage of ILI visits is number of ILI visits divided by total number of daily visits (outpatient visits).

Percentage of Influenza-Like Illness Visits by Region For Week: 52



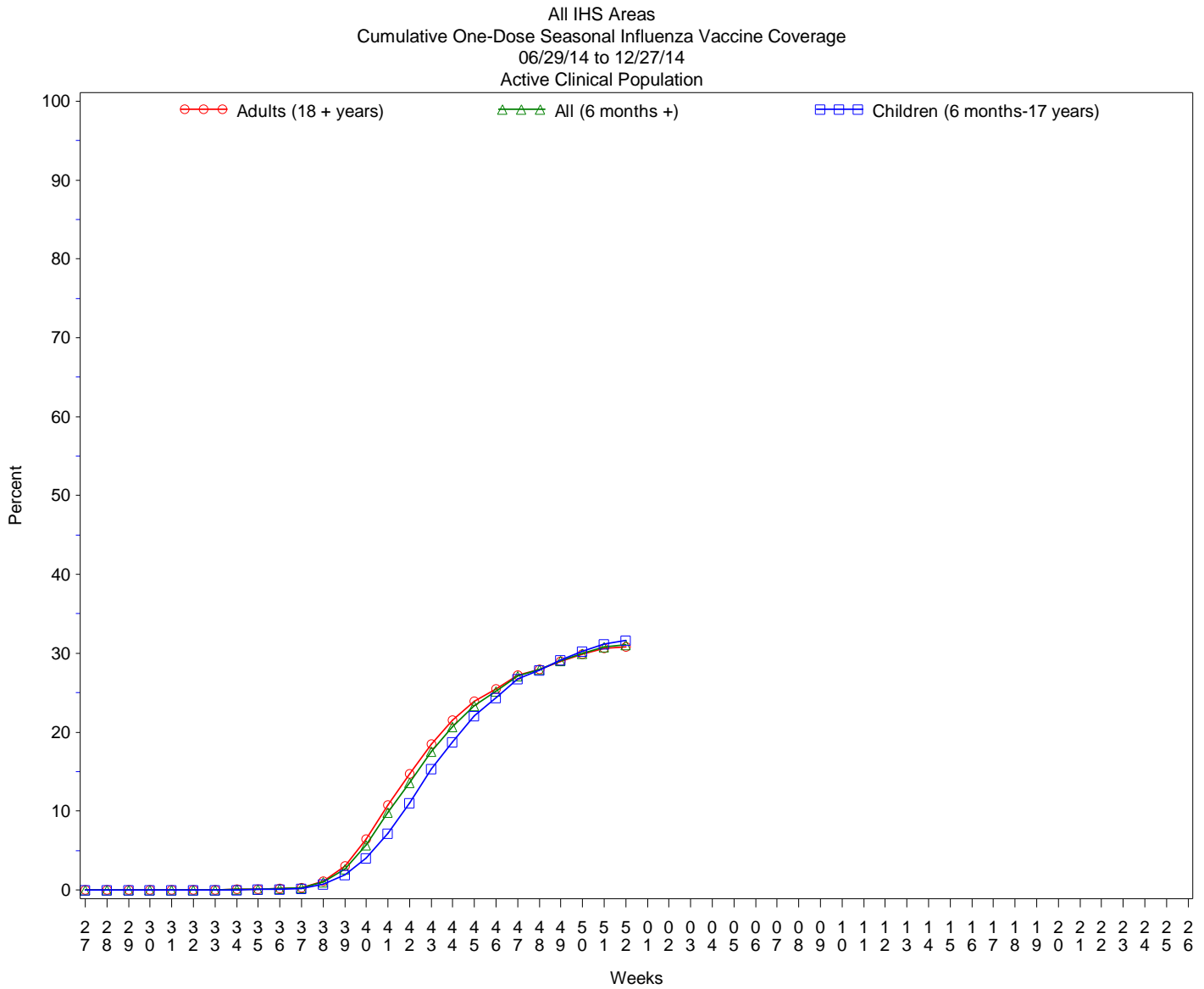
% Visits for ILI Compared to Previous Week

IHS Areas	% in Week 51	% in Week 52
NATIONAL	2.1	2.9
ALASKA	0.4	0.8
ALBUQUERQUE	1.4	2.3
BEMIDJI	3.5	8.0
BILLINGS	1.8	3.2
CALIFORNIA	0.8	1.5
GREAT PLAINS	2.7	3.0
NASHVILLE	4.6	6.3
NAVAJO	1.8	2.6
OKLAHOMA	2.1	2.7
PHOENIX	2.2	2.7
PORTLAND	1.8	2.3
TUCSON	1.5	1.2

Percentage of ILI visits is number of ILI visits divided by total number of daily visits.

IHS Influenza Vaccination* Surveillance

- As of 12/27/2014, sites reporting to the IIAS have administered 374,309 doses (1st and 2nd) of seasonal influenza vaccine to Active Clinical patients.



Influenza Vaccination Coverage by Age Group*

Age Group	Active Clinical Population**	Seasonal Flu Vaccine (At Least 1 Dose)***	% Seasonal Flu (At Least 1 Dose)	Seasonal Flu Vaccine (At Least 2 Doses)	% Seasonal Flu (At Least 2 Doses)	Total #Doses Administered****
0 - 5 months	5,417	91	1.7	4	0.1	95
6 - 23 months	27,067	12,499	46.2	2,054	7.6	14,587
2 - 4 years	65,763	18,400	28.0	323	0.5	18,793
5 - 17 years	245,231	75,959	31.0	679	0.3	76,920
18 - 49 years	519,236	123,829	23.8	1,243	0.2	125,539
50 - 64 years	208,162	81,623	39.2	833	0.4	82,792
65 + years	115,990	54,705	47.2	643	0.6	55,678
Children (6 months-17 years)	338,061	106,858	31.6	3,056	0.9	110,300
Adults (18 + years)	843,388	260,157	30.8	2,719	0.3	264,009
All (6 months +)	1,181,449	367,015	31.1	5,775	0.5	374,309

* Limited to sites that exported both doses administered and active clinical population data.

** Active Clinical is defined as patients who have had at least 2 visits in the last 3 years.

*** Number of unique patients with at least 1 dose.

**** Total # Doses Administered = All doses administered to patients including doses not included in coverage calculation due to lack of Active Clinical Population data.

Influenza Vaccination Doses Administered by Influenza Vaccination Type*

Area	Inactive CVX Codes*	CVX 88 FLU-NOS**	CVX 111 FLU-LAIV3	CVX 135 FLU-HIGH	CVX 140 FLU-IIV3pf	CVX 141 FLU-IIV3	CVX 144 FLU-Dermal	CVX 149 FLU-LAIV4	CVX 150 FLU-IIV4pf	CVX 153 FLU-cclIV3	CVX 155 FLU-RIV3	CVX 158 IIV4	CVX 161 IIV4pf-ped	Proc 99.52 Vac Inf	ICD-9 V04.81 Vac Inf	CPT Billing Codes+	Cumulative # of Doses Seasonal Flu
AKA	41	76	6	332	30	3793	.	761	1969	113	2	3990	.	1	173	112	11399
ALB	116	276	14	1038	372	14129	227	2604	5371	1	1	2295	41	.	114	208	26807
BEM	108	242	51	323	504	6774	13	1107	1480	2	1	484	2	.	505	77	11673
BIL	100	150	7	918	212	4801	1	2144	9864	1	.	862	.	.	94	133	19287
CAO	109	216	5	992	1297	12707	511	2134	3430	1	2	1251	1	.	328	295	23279
GPA	46	177	14	463	436	14475	45	3307	7163	3	3	4690	15	1	1185	57	32080
NSA	291	156	.	156	216	6271	403	685	3244	.	6	390	1	26	169	219	12233
NAV	129	370	21	419	4095	68538	.	4293	6609	2	1	5820	107	1	493	635	91533
OKC	166	2579	105	3293	229	51958	351	5304	21649	13	3	3649	2	226	971	184	90682
PHX	74	520	6	1486	274	17008	103	4443	18716	1	4	1903	20	6	458	523	45545
POR	192	631	92	761	1191	11084	301	2559	5010	15	12	4144	115	.	326	313	26746
TUC	.	32	1	11	4	474	1	366	6558	.	.	997	.	1	267	21	8733
	1372	5425	322	10192	8860	212012	1956	29707	91063	152	35	30475	304	262	5083	2777	399997

* Inactive CVX Codes 15 (FLU-TIVhx), 16 (FLU-WHOLE), 123 (FLU-H5N1), and 151 (FLU-NasNOS) should not be used to document flu vaccines given this flu season.

** CVX Code 88 (FLU-NOS) should only be used to document flu vaccines given elsewhere when flu vaccine type is unknown.

+ CPT Flu codes include: 90654-90662, 90672-90673, 90685-90686, 90724, G0008, G8108.

^ ICD9 codes V04.8 and V06.6 are not displayed on this report and are not used in any of the influenza vaccine coverage calculations.

- This report includes data from the following number of Resource and Patient Management System (RPMS) databases:

IHS Area	# of RPMS Databases Reporting*	# of Facilities Reporting**
NATIONAL	182	345
ALASKA	9	45
ALBUQUERQUE	15	23
BEMIDJI	5	10
BILLINGS	13	26
CALIFORNIA	27	45
GREAT PLAINS	17	27
NASHVILLE	20	24
NAVAJO	8	23
OKLAHOMA	20	47
PHOENIX	18	31
PORTLAND	28	36
TUCSON	2	8

* Exporting databases may include data from multiple facilities.

** Includes only facility categories: Hospital, Health Center, Health Station, Health Location, Alaska Village Clinic.