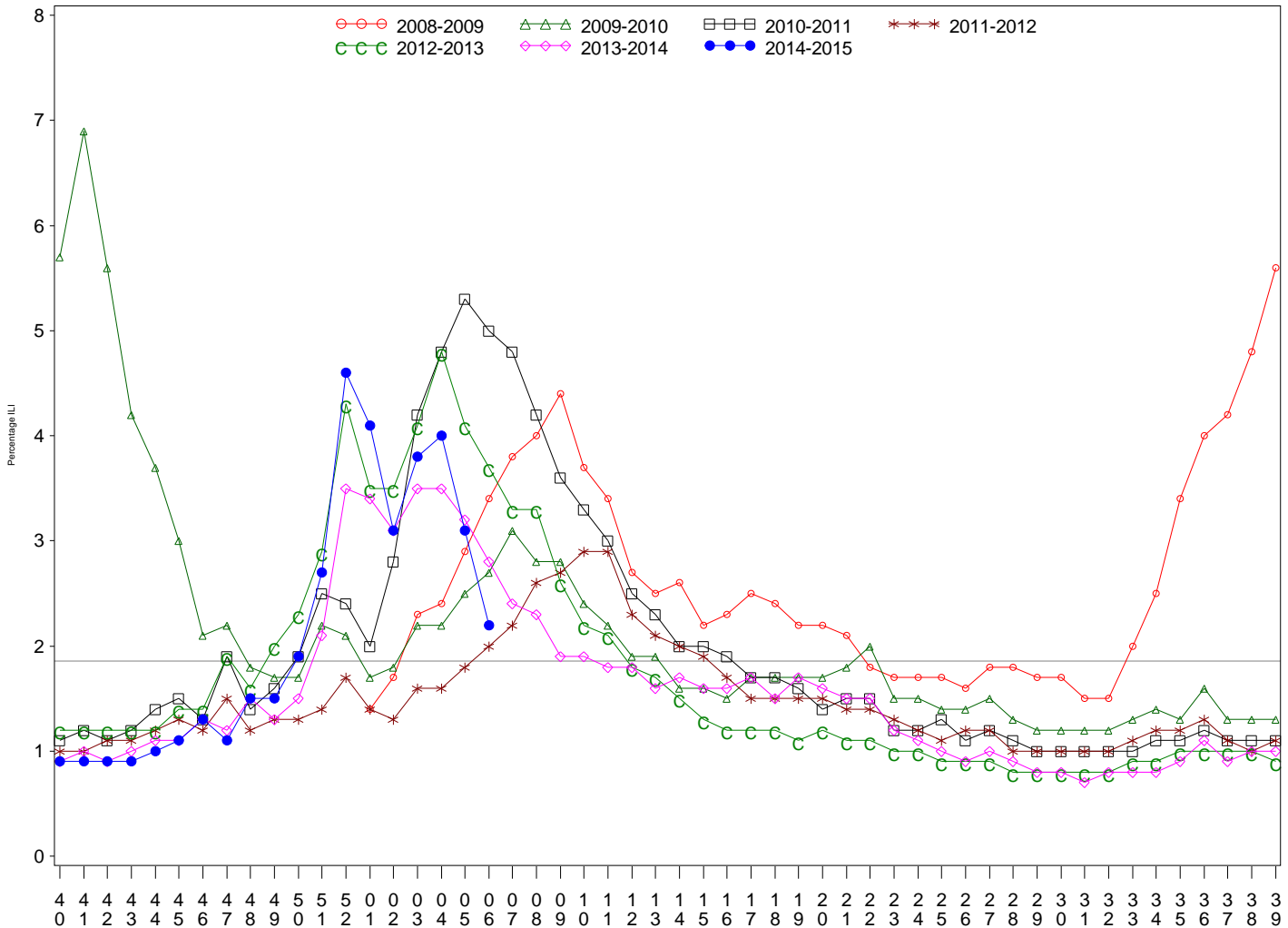




Indian Health Service
 Division of Epidemiology and Disease Prevention
Influenza Surveillance Report
IHS Influenza Awareness System (IIAS)
#19 (Week 6: 6/29/2014 – 2/7/2015)

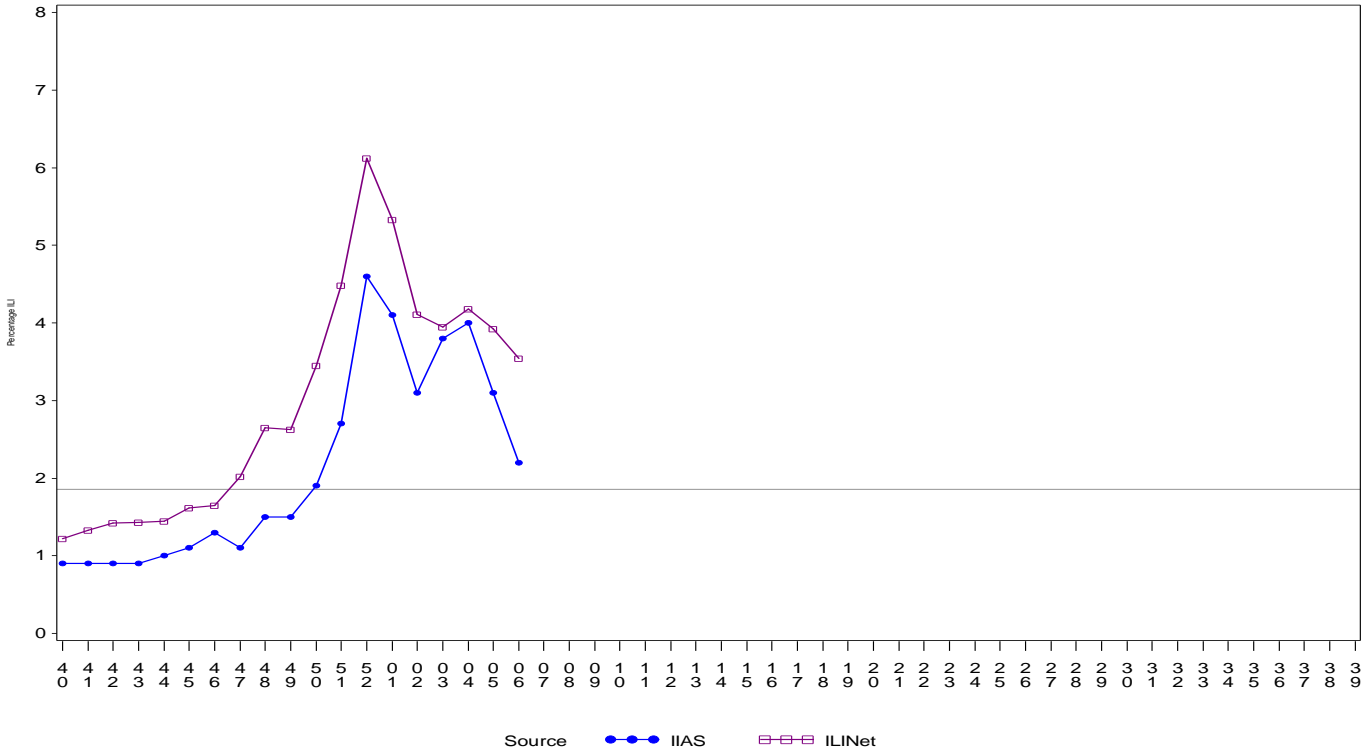
- Influenza-like-illness (ILI) activity in IHS and the U.S. is declining, but remains elevated.
- To date IHS has administered over 424,000 influenza vaccines this season.
- Overall, 34.8% of the IHS Active Clinical population received an influenza vaccine this season.

All IHS Areas
 Influenza-Like Illness (ILI) for All Surveillance Years
 Percentage of Visits for ILI per week
 01/04/09 to 2/7/15



Percentage of ILI visits is number of ILI visits divided by total number of daily visits.
 The horizontal line represents the 2013-2014 baseline. The baseline is the mean percentage of patient visits for ILI during non-influenza weeks for the previous three seasons plus two standard deviations.

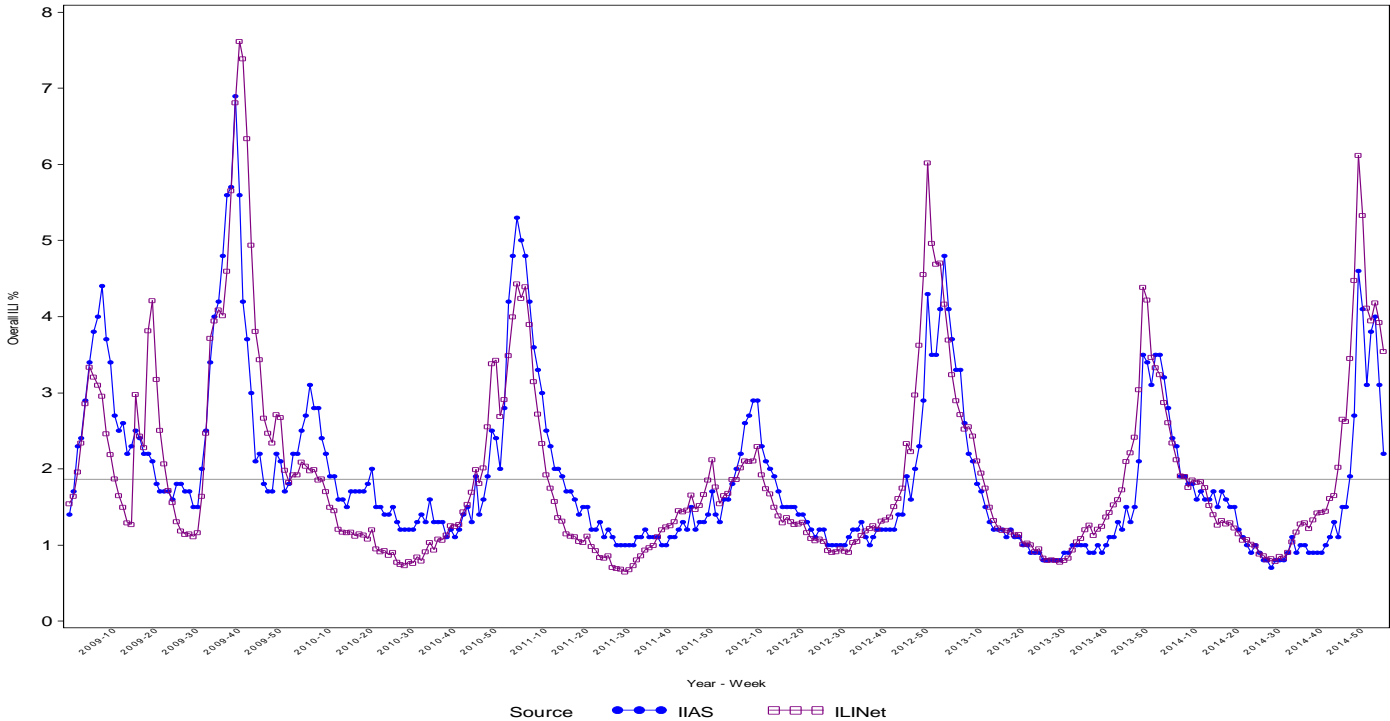
Proportion of Outpatient Visits for Influenza-Like Illness (ILI)
 Percent ILI for FluYear 2014 - 2015
 ILINet vs. IIAS
 09/28/14 to 2/7/15



Source: ●●● IIAS □□□ ILINet

Percentage of ILI visits is number of ILI visits divided by total number of daily visits (outpatient visits).
 The horizontal line represents the 2013-2014 baseline. The baseline is the mean percentage of patient visits for ILI during non-influenza weeks for the previous three seasons plus two standard deviations.
 Sources: ILINet - CDC Sentinal Surveillance System for Influenza-Like Illness, IIAS - IHS Influenza Awareness System

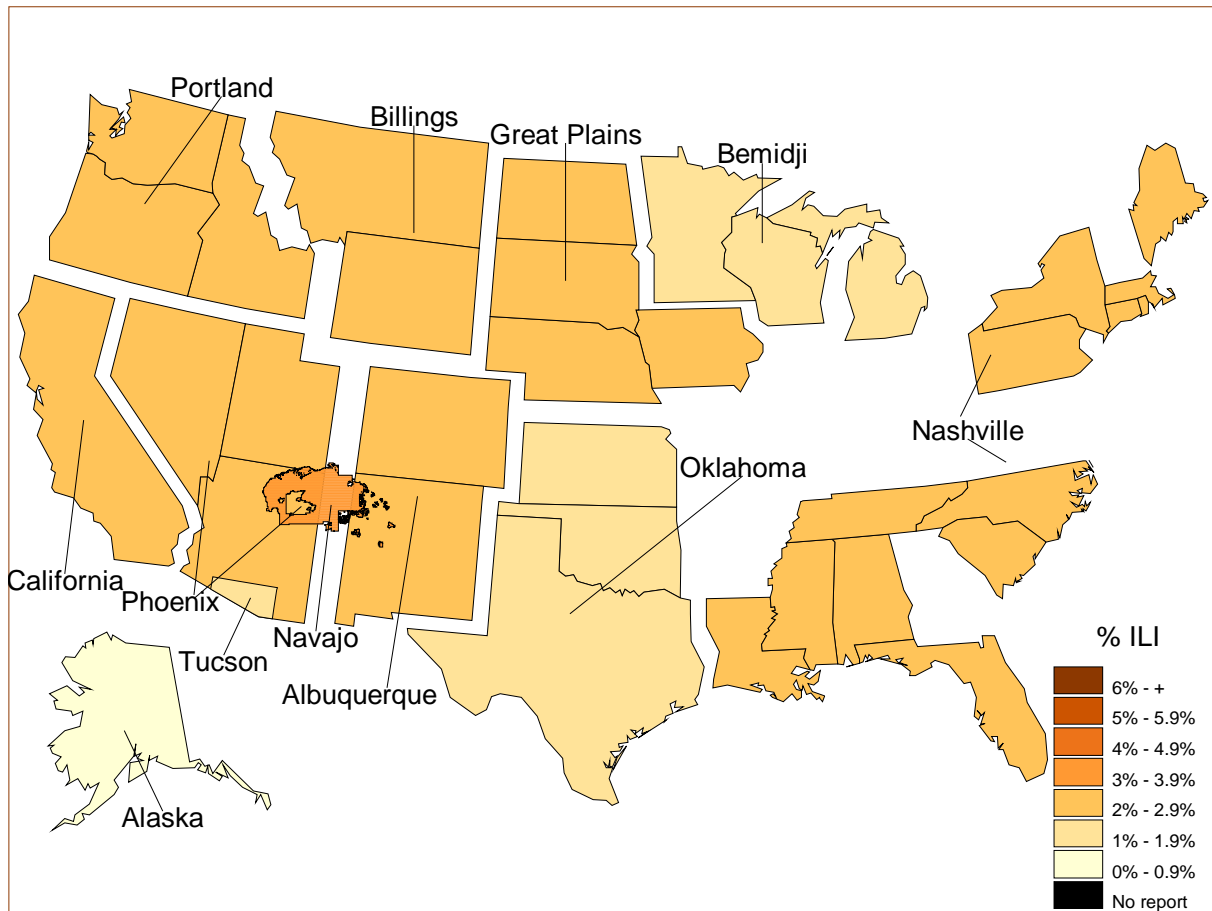
IIAS versus ILINet
 Influenza-Like Illness (ILI) All Surveillance Years - Continuous
 Percentage of Visits for ILI per week
 01/04/09 to 2/7/15



Source: ●●● IIAS □□□ ILINet

Percentage of ILI visits is number of ILI visits divided by total number of daily visits (outpatient visits).

Percentage of Influenza-Like Illness Visits by IHS Area
For Week: 6



% Visits for ILI Compared to Previous Week

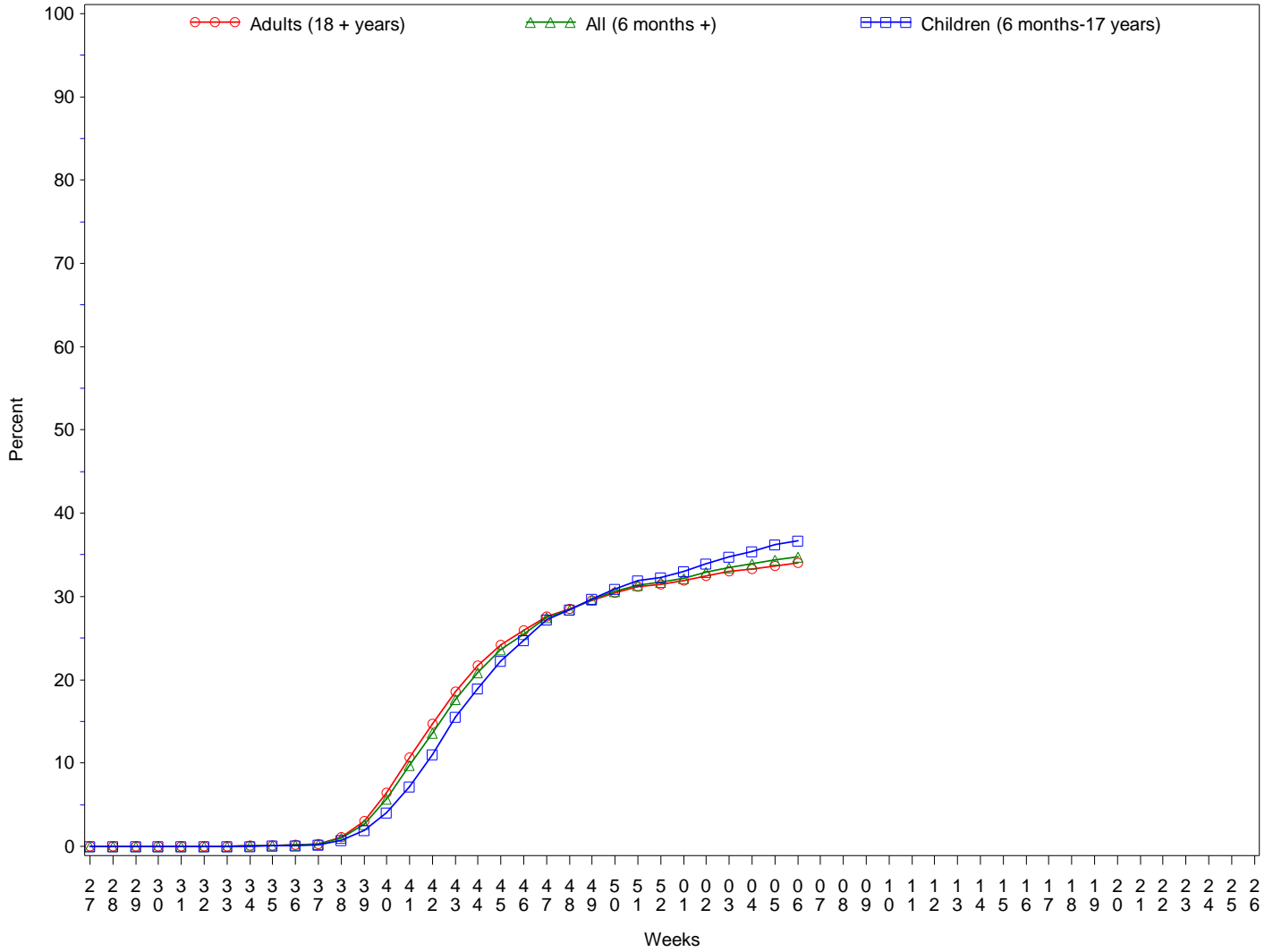
IHS Areas	% in Week 5	% in Week 6
NATIONAL	3.1	2.2
ALASKA	1.1	0.8
ALBUQUERQUE	2.4	2.7
BEMIDJI	1.5	1.4
BILLINGS	2.4	2.0
CALIFORNIA	2.6	2.2
GREAT PLAINS	3.7	2.9
NASHVILLE	2.8	2.0
NAVAJO	3.2	3.0
OKLAHOMA	3.5	1.8
PHOENIX	3.5	2.4
PORTLAND	3.0	2.1
TUCSON	2.9	1.4

Percentage of ILI visits is number of ILI visits divided by total number of daily visits.

IHS Influenza Vaccination Surveillance

- As of 2/7/2015, sites reporting to the IIAS have administered 424,490 doses (1st and 2nd) of seasonal influenza vaccine to Active Clinical patients.

All IHS Areas
 Cumulative One-Dose Seasonal Influenza Vaccine Coverage
 06/29/14 to 2/7/15
 Active Clinical Population



Influenza Vaccination Coverage by Age Group*

Age Group	Active Clinical Population**	Seasonal Flu Vaccine (At Least 1 Dose)***	% Seasonal Flu (At Least 1 Dose)	Seasonal Flu Vaccine (At Least 2 Doses)	% Seasonal Flu (At Least 2 Doses)	Total #Doses Administered****
0 - 5 months	5,463	120	2.2	4	0.1	124
6 - 23 months	27,078	15,766	58.2	3,961	14.6	19,771
2 - 4 years	65,889	22,151	33.6	530	0.8	22,761
5 - 17 years	247,207	87,029	35.2	866	0.4	88,232
18 - 49 years	521,937	139,615	26.7	1,572	0.3	141,731
50 - 64 years	210,410	90,005	42.8	1,036	0.5	91,445
65 + years	117,529	59,361	50.5	818	0.7	60,550
Children (6 months-17 years)	340,174	124,946	36.7	5,357	1.6	130,764
Adults (18 + years)	849,876	288,981	34.0	3,426	0.4	293,726
All (6 months +)	1,190,050	413,927	34.8	8,783	0.7	424,490

* Limited to sites that exported both doses administered and active clinical population data.

** Active Clinical is defined as patients who have had at least 2 visits in the last 3 years.

*** Number of unique patients with at least 1 dose.

**** Total # Doses Administered = All doses administered to patients including doses not included in coverage calculation due to lack of Active Clinical Population data.

Influenza Vaccination Doses Administered by Influenza Vaccination Type*

Area	Inactive CVX Codes*	CVX 88 FLU-NOS**	CVX 111 FLU-LAIV3	CVX 135 FLU-HIGH	CVX 140 FLU-IIV3pf	CVX 141 FLU-IIV3	CVX 144 FLU-Dermal	CVX 149 FLU-LAIV4	CVX 150 FLU-IIV4pf	CVX 153 FLU-cclIIV3	CVX 155 FLU-RIV3	CVX 158 IIV4	CVX 161 IIV4pf-ped	Proc 99.52 Vac Inf	ICD-9 V04.81 Vac Inf	CPT Billing Codes+	Cumulative # of Doses Seasonal Flu
AKA	57	165	9	351	34	4418	.	852	2648	114	3	4494	2	1	187	151	13486
ALB	127	337	15	1136	591	15733	251	2666	6393	1	1	2776	62	.	135	215	30439
BEM	156	302	61	387	729	9046	42	1467	2199	6	1	702	11	.	519	98	15726
BIL	114	201	7	956	298	5301	1	2228	11630	1	.	1157	.	1	113	148	22156
CAO	140	255	5	1044	1657	14344	543	2340	4131	1	2	1537	62	.	378	489	26928
GPA	46	238	15	498	457	16777	45	3402	8414	3	3	5409	33	1	1242	67	36650
NSA	337	177	2	161	249	6770	431	692	3537	.	6	438	1	26	192	234	13253
NAV	191	539	39	462	5534	72578	.	4498	8467	2	1	6505	340	6	553	713	100428
OKC	211	3277	112	3458	263	58110	405	5621	24245	15	4	4236	6	287	1099	215	101564
PHX	102	619	10	1600	362	19105	107	4809	21593	2	5	2479	65	8	483	580	51929
POR	207	753	112	799	1365	12535	339	2868	5533	19	13	4722	190	.	342	343	30140
TUC	.	38	2	12	16	640	1	401	7611	.	1	1051	1	1	348	24	10147
	1688	6901	389	10864	11555	235357	2165	31844	106401	164	40	35506	773	331	5591	3277	452846

* Inactive CVX Codes 15 (FLU-TIVhx), 16 (FLU-WHOLE), 123 (FLU-H5N1), and 151 (FLU-NasNOS) should not be used to document flu vaccines given this flu season.

** CVX Code 88 (FLU-NOS) should only be used to document flu vaccines given elsewhere when flu vaccine type is unknown.

+ CPT Flu codes include: 90654-90662, 90672-90673, 90685-90686, 90724, G0008, G8108.

^ ICD9 codes V04.8 and V06.6 are not displayed on this report and are not used in any of the influenza vaccine coverage calculations.

- This report includes data from the following number of Resource and Patient Management System (RPMS) databases:

IHS Area	# of RPMS Databases Reporting*	# of Facilities Reporting**
NATIONAL	188	397
ALASKA	11	60
ALBUQUERQUE	15	26
BEMIDJI	15	28
BILLINGS	13	28
CALIFORNIA	27	47
GREAT PLAINS	17	32
NASHVILLE	19	25
NAVAJO	8	31
OKLAHOMA	20	47
PHOENIX	16	29
PORTLAND	25	35
TUCSON	2	9

* Exporting databases may include data from multiple facilities.

** Includes only facility categories: Hospital, Health Center, Health Station, Health Location, Alaska Village Clinic.