

---

# National Patient Information Reporting System: National Data Warehouse

---

## **NDW Data Quality Mart**

### **User Guide**

Version 3.0

April 2011



Department of Health and  
Human Services

Indian Health Service

Office of Information  
Technology (OIT)

---

## Contents

<b>Version Control.....</b>	<b>iii</b>
<b>Contact Information .....</b>	<b>iii</b>
<b>Introduction.....</b>	<b>1</b>
<b>Accessing the Data Quality Mart.....</b>	<b>1</b>
Data Quality Reports Schedule .....	2
Data Quality Mart Organization .....	2
<b>Viewing User Population Related Reports .....</b>	<b>2</b>
DQM-UP1 Registrations Not Included on User Population Report .....	3
Viewing the Summary Report.....	4
Viewing Report Details .....	5
DQM-UP2 Registrations Potentially Countable on UP Report.....	6
Viewing the Summary Report.....	6
Viewing Report Details .....	7
DQM-UP3 Missing Registrations by Facility.....	9
Viewing the Summary Report.....	10
Viewing Report Details .....	10
<b>Viewing Workload Related Reports.....</b>	<b>12</b>
DQM-WL1 WL Reportable Visits Not Included on Workload Report.....	13
Viewing the Summary Report.....	14
Viewing Report Details .....	15
DQM-WL2APC Potentially Workload Reportable Ambulatory Visits .....	17
Viewing the Summary Report.....	17
Viewing Report Details .....	18
DQM-WL2CON Potentially Workload Reportable Contract Visits .....	20
Viewing the Summary Report.....	20
Viewing Report Details .....	21
DQM-WL2DEN Potentially Workload Reportable Dental Visits.....	22
Viewing the Summary Report.....	23
Viewing Report Details .....	23
DQM-WL2INP Potentially Workload Reportable Inpatient Visits.....	25
Viewing the Summary Report.....	25
Viewing Report Details .....	26

## Version Control

Version	Date	Notes
1.0	April 2008	Initial version. FY08 contract deliverable, D1.9.3 Approved April 11, 2008
1.1	November 2010	Added section for a new UP Related report DQM-3 Missing Registrations by Facility  Added advisory note for DQM-WL2APC report  Added note to DQM-UP1, DQM-UP2, and DQM- WL1 reports reflecting a recent change to record selection restriction.
2.1	March 2011	Annual Update/Review; 2 <sup>nd</sup> pass due to changes in related documents (NDW Reporting Web Site UG)
3.0	April 2011	Final April 5, 2011

## Contact Information

If you have any questions or comments regarding the NDW Data Quality Mart, please contact the OIT Help Desk at: [support@ihs.gov](mailto:support@ihs.gov)

## Introduction

The National Data Warehouse (NDW) **Data Quality Mart (DQM)** was developed by NPIRS to provide feedback to the suppliers of data to the NDW related to the detection of critical and non-critical errors affecting the quality and completeness of their data.

The NDW Data Quality Mart is a collection of easily accessible web-based reports, which provide the user a quantified picture of problems with their data, as well as enough detail to allow record level identification of problematic data. Note that any detail displayed is within the boundaries of currently required laws and regulations, such as the Health Insurance Portability and Accountability Act (HIPAA).

Since producing user population and workload reports is a core function of NPIRS, the first release of the Data Quality Mart focuses on data errors that have or could have an influence on either report. Due to their importance, these data errors will be labeled as NDW critical data errors.

Like any other structure within NDW, the future growth of the Data Quality Mart will be gradual, and it will evolve around the needs of its users. Because the first release of this data mart is tightly connected with user population and workload matters, future releases will concentrate on data quality issues related to clinical data and other data quality issues important to NDW users.

All Data Quality Mart reporting is limited to data already loaded and stored in the NDW. Reports related to problems loading received data into the NDW database are located in the NDW Export Tracking Mart.

## Accessing the Data Quality Mart

The Data Quality Mart is accessible via the IHS National Data Warehouse Reporting Web Site at <http://rohan>.

To view the documentation only, log in as a Guest User. It is recommended that you first review the NDW Reporting Web Site User Guide if you are not familiar with the general workings of this website.

To view your reports along with the documentation, you must log on to the website as a Registered User. Double-click on the folder named “04. Data Quality Mart” to access the related documentation and report subfolders. Consistent with the configuration of the NDW Userpop/Workload Data Mart, the NDW Data Quality Mart contains a separate

report folder for each IHS Administrative Area, and each Area's users are allowed to view only the reports in their specific area folder.

## Data Quality Reports Schedule

The Data Quality reports are generated per the schedule posted in the 'DQM User Documentation' folder. Reports may also be run upon request for a timeframe of your choosing. To request a report run, e-mail your request to the OIT Help Desk at [support@ihs.gov](mailto:support@ihs.gov).

## Data Quality Mart Organization

Currently, the Data Quality Mart provides information about critical data errors. Critical errors are defined as those errors and/or omissions that affect the accuracy of User Population (UP) and Workload (WL) reporting and verification processes. They include data errors that directly influence UP/WL reported numbers, as well as data errors and omissions that could potentially influence UP/WL reported numbers.

Data Quality Mart reports are organized into two categories:

- Reports related to User Population
- Reports related to Workload

## Viewing User Population Related Reports

The Data Quality Mart reports related to User Population are located in the "**UP Related**" folder. Currently there are three reports in the UP Related DQM folder:

- 1) DQM-UP1 Registrations Not Included on User Population Reports
- 2) DQM-UP2 Registrations Potentially Countable on UP Reports
- 3) DQM-UP3 Missing Registrations by Facility

These reports assist sending sites in identifying registration records that have been excluded from the User Population (UP) reports, as well as registration records that could potentially be considered countable<sup>1</sup> on the UP reports.

To view a User Population-related report,

---

<sup>1</sup> To be considered countable, registrants must be American Indians or Alaska Natives who reside in selected service units (HQ determined, usually non-Urban) within the Area from which the registration record was received and must not reside in a NON-Service Unit (00).

1. In the Folders pane on the left, expand your Area's folder.
2. Click the "UP Related" folder.
3. The list of reports will be displayed in the Details pane.

To view the most recent version of the report, double-click the report name. To view a previous version of the report, right click on the report name and then select 'History'.

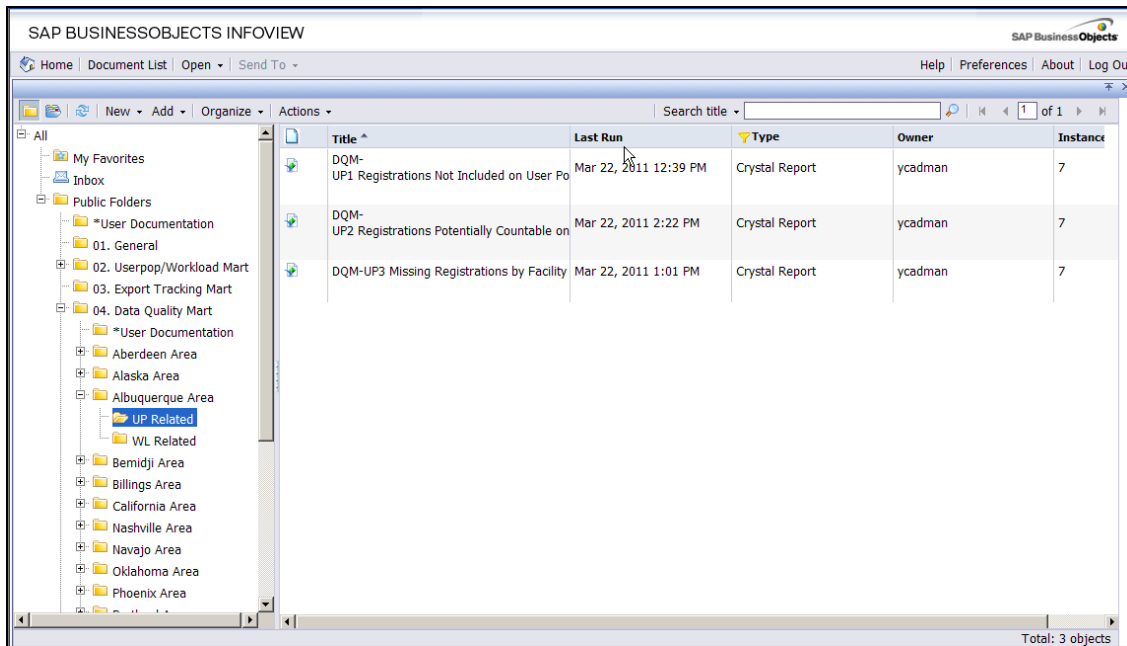


Figure 1 - Data Quality Mart UP Report Listing.

## DQM-UP1 Registrations Not Included on User Population Report

According to business rules established by IHS Headquarters, Division of Program Statistics (DPS), a registration record must have, at a minimum, the following data elements to be included on User Population reports:

- Last Name
- First or Middle Name
- Chart Number
- Valid Chart Facility

For each Area and exporting Facility, the **Registrations Not Included on User Population Reports** show registration records that will not be included on the User Population reports because there is a problem with one or more of these required data elements.

This report provides a summary view of the extent of this problem and enough detail to correct the problem. When corrected registration records have been received by NPIRS, the numbers on these reports should disappear, and the Area/Facility can be confident that all their registrations will be included on the next run of the User Population reports.

**Note:** As of November 2010, this report shows only registration records loaded into NDW during the last three fiscal years.

## Viewing the Summary Report

The main view provides a quantified summary of the registrations, showing the total number of registrations not included, as well as numbers affected by each of the required data elements.

The following figure shows an example of the summarized view of a 'DQM-UP1 Registrations Not Included on User Population' report.

AREA: HAWAII		Total # of Registrations Not Included	Chart Facility Missing/Invalid	Chart Number Missing	Last Name Missing	First and Middle Name Missing
Exporting Facility						
912211	KAUAI HEALTH CENTER	112	2 / 3	0	0	107
912230	LANAI HEALTH CENTER	1	0 / 0	0	1	0
912310	MAUI HEALTH CENTER	158	0 / 158	0	0	0
912810	MOLOKAI HEALTH CENTER	2	0 / 0	0	2	0
912851	OAHU HEALTH LOCATION	1	0 / 0	0	0	1
<b>AREA Total:</b>		<b>274</b>	<b>2 / 161</b>	<b>0</b>	<b>3</b>	<b>108</b>

Figure 2 "DQM-UP1 Registrations Not Included on User Population"

Column Header	Description
<b>Exporting Facility</b>	Code and Facility Name of the exported registration data.
<b>Total # of Registrations Not Included</b>	Total count of registration records that will not be included on UP reports.
<b>Chart Facility Missing/Invalid</b>	Number of registration records with no Chart Facility or with a Chart Facility that is not found in the IHS Standard Code Book.
<b>Chart Number Missing</b>	Number of registration records with no Chart Number.

Column Header	Description
<b>Last Name Missing</b>	Number of registration records with no patient Last Name
<b>First and Middle Name Missing</b>	Number of registration records with no patient First Name and no patient Middle Name.

## Viewing Report Details

The detail view provides record-level identification of the problems, allowing corrective action. Double-clicking on any listed **Exporting Facility** (blue font), displays the details of the selected report.

The following figure shows an example of the detailed view of a ‘*DQM-UP1 Registrations Not Included on User Population*’ report.

Registrations Not Included on User Population Reports				
DETAIL for: <a href="#">912211 KAUAI HEALTH CENTER</a>				
Registration Code	Chart Facility	Chart Number	Last Name	First and Middle Name
99874000017099	<b>919910 INVALID</b>	EXIST	EXIST	EXIST
99874000017102	<b>919910 INVALID</b>	EXIST	EXIST	EXIST
99874000017104	<b>919910 INVALID</b>	EXIST	EXIST	EXIST
99874000017105	912211 KAUAI HEALTH CENTER	EXIST	EXIST	<b>MISSING</b>
99874000017113	<b>MISSING</b>	EXIST	EXIST	EXIST
99874000017114	912211 KAUAI HEALTH CENTER	EXIST	EXIST	<b>MISSING</b>
99874000017118	912211 KAUAI HEALTH CENTER	EXIST	EXIST	<b>MISSING</b>
99874000017119	<b>MISSING</b>	EXIST	EXIST	<b>MISSING</b>
99874000017120	912211 KAUAI HEALTH CENTER	EXIST	EXIST	<b>MISSING</b>
99874000017121	912211 KAUAI HEALTH CENTER	EXIST	EXIST	<b>MISSING</b>
99874000017122	912211 KAUAI HEALTH CENTER	EXIST	EXIST	<b>MISSING</b>
99874000017123	912211 KAUAI HEALTH CENTER	EXIST	EXIST	<b>MISSING</b>
99874000017125	912211 KAUAI HEALTH CENTER	EXIST	EXIST	<b>MISSING</b>
99874000017181	912211 KAUAI HEALTH CENTER	EXIST	EXIST	<b>MISSING</b>
99874000017183	912211 KAUAI HEALTH CENTER	EXIST	EXIST	<b>MISSING</b>
99874000017184	912211 KAUAI HEALTH CENTER	EXIST	EXIST	<b>MISSING</b>
99874000017199	912211 KAUAI HEALTH CENTER	EXIST	EXIST	<b>MISSING</b>
99874000017214	912211 KAUAI HEALTH CENTER	EXIST	EXIST	<b>MISSING</b>

Figure 3 "DQM-UP1 Registrations Not Included on User Population"

Column Header	Description
<b>Registration Code</b>	The unique registration record identifier generated by the source system, comprised of the 5-digit exporting database identifier concatenated with the zero-filled IEN (Internal Entry Number) of the source system registration record.
<b>Chart Facility</b>	Record level information about the chart facility validation. The Chart Facility Code and Facility Name appear only when the code is valid. INVALID (red, bold font) indicates an invalid code. MISSING (red, bold font) indicates no code.



Column Header	Description
<b>Chart Number</b>	Record level information about the patient chart number. EXIST indicates that there is a chart number for the registration record. MISSING (red, bold font) indicates that the chart number is missing.
<b>Last Name</b>	Record level information about the Last Name of the patient. EXIST indicates that there is a chart number for the registration record. MISSING (red, bold font) indicates no chart number.
<b>First and Middle Name</b>	Record level information about the First and Middle Name of a patient. EXIST indicates that the registration record has a First Name <i>or</i> Middle Name. MISSING (red, bold font) indicates that both of these name fields are missing.

## DQM-UP2 Registrations Potentially Countable on UP Report

Although the registrants are included on the Area's User Population report, they may not be credited to the User Population counts for that Area. Registrants considered as countable must be American Indians or Alaska Natives who reside in selected service units (HQ determined, usually non-Urban) within the Area from which the registration record was received and must not reside in a Non-Service Unit (00).

For each Area and exporting Facility, the **Registrations Potentially Countable on UP Report** shows registration records that could potentially be considered as countable on the User Population reports but are not, because essential elements related to a patient's residency and/or related to a patient's American Indian/Alaska Native (AI/AN) status is missing or invalid.

This report provides a picture of the extent of this problem and enough detail to correct the problem. When corrected registration records have been received by NPIRS, the numbers on this report should get lower, giving the Area confidence that these fixed registrations may contribute to the Area's User Population counts.

---

**Note:** As of November 2010, this report shows only registration records loaded into NDW during the last three fiscal years.

---

## Viewing the Summary Report

The main view provides a quantified summary of potentially countable registrations, showing total numbers, as well numbers related to patient residency and patient AI/AN status.

The following figure shows an example of the summarized view of a 'DQM-UP2 Registrations Potentially Countable on User Population' report.

NPIRS		DATA QUALITY MART			
Registrations Potentially Countable on User Population Reports					
<input type="text" value="Double click the blue to view the details"/>		Page 1 of 1			
AREA: HAWAII		Patient Residency		Patient AI/AN Status	
Exporting Facility	Total # of Potentially Countable Registrations	Community Missing/Invalid	Tribe Missing/Invalid	Beneficiary Missing/Invalid	Blood Quantum Missing/Invalid
912211 KAUAI HEALTH CENTER	180	63 / 115	3 / 2	2 / 2	3 / 1
912230 LUNAI RIVER FALLS HC	33	0 / 31	2 / 0	0 / 0	0 / 0
912310 MAUI HEALTH CENTER	171	28 / 17	126 / 0	0 / 0	0 / 0
912810 MOLOKAI HEALTH CENTER	52	3 / 45	4 / 0	0 / 0	0 / 0
912851 OAHU HEALTH LOCATION	2	0 / 2	0 / 0	0 / 0	0 / 0
<b>Area Total:</b>	438	94 / 210	132 / 2	2 / 2	2 / 2

Figure 4 "DQM-UP2 Registrations Potentially Countable on User Population"

Column Header	Description
<b>Exporting Facility</b>	Code and Facility Name of the exported registration data.
<b>Total # of Potentially Countable Registrations</b>	Total count of registration records that potentially could be counted on UP Reports.
<b>Community Missing/Invalid</b>	Number of registration records with no community of residence code or with a code that does not exist in the IHS Standard Code Book at the time this report was run.
<b>Tribe Missing/Invalid</b>	Number of registration records with no tribal code or with a code that does not exist in the IHS Standard Code Book at the time this report was run.
<b>Beneficiary Missing/Invalid</b>	Number of registration records with no beneficiary code or with a code that does not exist in the IHS Standard Code Book at the time this report was run.
<b>Blood Quantum Missing/Invalid</b>	Number of registration records with no blood quantum code or with a code that does not exist in the IHS Standard Code Book at the time this report was run.

## Viewing Report Details

The detail view provides record-level identification of the problems, allowing corrective action. Double-clicking on any listed **Exporting Facility** (blue font), displays the details of the selected report.

The following figure shows an example of the detailed view of a ‘DQM-UP2 Registrations Potentially Countable on UP’ report.

Registrations Potentially Countable on User Population Reports				
DETAIL for:	912211 KAUAI HEALTH CENTER			
Registration Code	Patient Residency		Patient AI/AN Status	
	Community	Tribe	Beneficiary	Blood Quantum
99874000022131	<b>1671001 INVALID</b>	945 KASHUB TRIBE	VALID	VALID
99874000022239	6605888 BIG ISLAND BAY	<b>499 INVALID</b>	VALID	VALID
99874000022284	<b>MISSING</b>	999 INDIAN - TRIBE UNSPECIFIED	<b>INVALID</b>	<b>MISSING</b>
99874000022324	<b>1671001 INVALID</b>	920 GORAL NATION	VALID	VALID
99874000022404	<b>5568993 INVALID</b>	999 INDIAN - TRIBE UNSPECIFIED	VALID	VALID
99874000022705	<b>1671001 INVALID</b>	945 KASHUB TRIBE	VALID	VALID
99874000022733	<b>2899927 INVALID</b>	999 INDIAN - TRIBE UNSPECIFIED	VALID	VALID
99874000022822	<b>MISSING</b>	945 KASUB TRIBE	VALID	VALID
99874000022830	<b>1671001 INVALID</b>	945 KASHUB TRIBE	VALID	VALID
99874000022865	6641993 WAIKOLOA BEACH	998 OTHER	<b>MISSING</b>	<b>MISSING</b>
99874000022903	<b>MISSING</b>	945 KASHUB NATION	VALID	VALID
99874000022921	<b>1671001 INVALID</b>	920 GORAL NATION	VALID	VALID
99874000022986	<b>1671001 INVALID</b>	945 KASHUB TRIBE	VALID	VALID
99874000023073	<b>1671001 INVALID</b>	955 BIG FOOT NATION	VALID	VALID
99874000023074	<b>1671001 INVALID</b>	920 GORAL NATION	VALID	VALID
99874000023089	<b>1671001 INVALID</b>	998 OTHER	VALID	VALID
99874000023112	<b>1671001 INVALID</b>	920 GORAL NATION	VALID	VALID
99874000023182	<b>MISSING</b>	<b>MISSING</b>	<b>MISSING</b>	<b>MISSING</b>
99874000023215	<b>MISSING</b>	955 BIG FOOT NATION	VALID	VALID
99874000023275	<b>MISSING</b>	945 KASHUB TRIBE	VALID	VALID
99874000023288	<b>MISSING</b>	955 BIG FOOT NATION	VALID	VALID
99874000023290	<b>MISSING</b>	945 KASHUB TRIBE	VALID	VALID
99874000023291	<b>MISSING</b>	945 KASHUB TRIBE	<b>INVALID</b>	VALID

Figure 5 "DQM-UP2 Registrations Potentially Countable on UP"

Column Header	Description
<b>Registration Code</b>	The unique registration record identifier generated by the source system, comprised of the 5-digit exporting database identifier concatenated with the zero-filled IEN (Internal Entry Number) of the source system registration record.
<b>Community</b>	Record level information about community validation. The community code and community name appear only when the code is valid. INVALID (red, bold font) indicates an invalid code MISSING (red, bold font) indicates no code.
<b>Tribe</b>	Record level information about tribal code validation. The tribal code and tribe name appear only when the code is valid. INVALID (red, bold font) indicates an invalid code. MISSING (red, bold font) indicates no code.
<b>Beneficiary</b>	Record level information about beneficiary code validation. VALID indicates a valid code. INVALID (red, bold font) indicates an invalid code MISSING (red, bold font) indicates no code. If the tribal code equals 998 or 999, red, bold font is used to indicate a critical error.

Column Header	Description
<b>Blood Quantum</b>	Record level information about blood quantum code validation. VALID indicates a valid code. INVALID (red, bold font) indicates an invalid code MISSING (red, bold font) indicates no code. If the tribal code equals 998 or 999, red, bold font is used to indicate a critical error.

## DQM-UP3 Missing Registrations by Facility

Encounter records with missing registrations are included in NPIRS workload reporting. Each of these potentially workload reportable encounter records have a registration identifier that does not yet have a matching registration record in the NDW.

Absence of an associated registration record for a workload reportable encounter will prevent inclusion of this “would be Active” registration on User Population reports. Active status is assigned to each registration based on the presence of at least one workload reportable visit within the last three fiscal year periods preceding the UP reporting end date<sup>2</sup>. The impact of missing registrations on User Population numbers may vary. User Population numbers may increase when the NDW receives a registration record that includes all data elements required for UP processing and there is no other Active registration(s) for the same patient.

For each Area and exporting/authorizing Facility, the **Missing Registration by Facility** report lists unmatched registration identifiers (unique registration code, or authorizing/chart facility and chart number) received in the workload reportable encounter record with service date/discharge date within the most recent three fiscal years.

This report provides a summary view showing the extent of this problem and detail information needed to correct the problem. When missing registration records have been received by NPIRS and successfully matched with associated visit(s), it no longer will appear on this report. Consequently, the missing registration will be included on the next run of the User Population reports if it is not showing on the ‘*DQM-UP1 Registrations Not Included on User Population*’ report.

<sup>2</sup> Reporting end date for User Population reports is published in the annual HQ memorandum – Timeline for Transmittal of Fiscal Year 20XX Workload Data and Production of User Population Estimates

## Viewing the Summary Report

The main view provides a summary count of registrations missing from the NDW and a count of un-linked workload reportable visits waiting to be matched with these registrations.

The following figure shows an example of the summarized view of a 'DQM-UP3 Missing Registrations by Facility' report.

Exporting Facility	Number of Known Registrants Involved	Number of Un-linked Workload Reportable Visits
912211 KAUAI HEALTH CENTER	18	25
912230 LANAI HEALTH CENTER	1	1
912310 MUAI HEALTH CENTER	3	3
912851 OAHU HEALTH CENTER	1	1
<b>AREA Total:</b>	<b>23</b>	<b>30</b>

Figure 6 "DQM-UP3 Missing Registrations by Facility"

Column Header	Description
<b>Exporting Facility</b>	Code and Name of the Facility sending encounter data or authorizing/chart facility. Depending on export file type received by NPIRS, the exporting facility may not be available. In that case authorizing facility or chart facility is provided for tracking purposes.
<b>Number of Known Registrants Involved</b>	Number of discrete registration identifiers submitted in workload reportable encounter records received by NDW. Registration data for these identifiers needs to be sent in to the NDW.
<b>Number of Un-linked Workload Reportable Visits</b>	Number of workload reportable encounter records that could not be linked to any existing record in the NDW registration data.

## Viewing Report Details

The detail view provides record-level identification of the problems, allowing corrective action. Double-clicking on any listed **Exporting Facility** (blue font), displays the details of the selected report.

Missing Registrations					
DETAIL for: 912211 KAUAI HEALTH CENTER					
Unique Registration Code	Chart Facility	Chart Number	Authorizing Facility	Number of Known Registrants Involved	Number of Un-linked Workload Reportable Visits
MISSING		999911	912211	1	1
MISSING	912211	999914	912211	1	3
MISSING		999916	912211	1	1
998740000040491				1	5
998740000038061				1	1
998740000037046				1	1
998740000036020				1	2
998740000026606				1	1
998740000023412				1	1
998740000023322				1	1
998740000018854				1	1
998740000018838				1	1
998740000018344				1	1
998740000017606				1	1
998740000014236				1	1
998740000014159				1	1

Figure 7 "Missing Registrations" report detail.

Column Header	Description
<b>Unique Registration Code</b>	The unique registration record identifier submitted in the encounter record(s) received by NDW. The unique registration code consists of the 5-digit source database identifier concatenated with zero filled IEN (Internal Entry Number) of the source system registration record. MISSING means that unique registration code was not supplied on encounter record(s). In this case supplemental registration identifiers are provided. These identifiers include combination of Authorizing/Chart Facility and Chart Number.
<b>Chart Facility</b>	Chart facility code from encounter record(s). As a supplemental identifier it is displayed only when Unique Registration Code is MISSING.
<b>Chart Number</b>	Chart number from encounter record(s). As a supplemental identifier it is displayed only when Unique Registration Code is MISSING.
<b>Authorizing Facility</b>	Chart facility code from encounter record(s). As a supplemental identifier it is displayed only when Unique Registration Code is MISSING.
<b>Number of Known Registrants Involved</b>	Number of discrete registration identifiers submitted in workload reportable encounter records received by NDW. Since the detail view lists each discrete identifier the displayed number is always '1'.
<b>Number of Un-linked Workload Reportable Visits</b>	Number of workload reportable encounter records for this registration identifier waiting for matching registration data.

## Viewing Workload Related Reports

Each encounter record received by NPIRS is evaluated for its workload reportability using business rules established by IHS Headquarters, Division of Program Statistics (DPS). Based on these rules, some encounter records will never be workload reportable. However, some records are marked as not workload reportable because deciding data elements are missing or invalid. Also, some encounter records marked workload reportable will not appear on workload reports because data elements for selecting records for these reports are missing or invalid.

The Data Quality Mart reports related to Workload are located in “**WL Related**” folder. Currently, there are five reports in the WL Related DQM folder:

- 1) DQM-WL1 WL Reportable Visits Not Included on Workload Reports
- 2) DQM-WL2APC Potentially Workload Reportable Ambulatory Visits
- 3) DQM-WL2CON Potentially Workload Reportable Contract Visits
- 4) DQM-WL2DEN Potentially Workload Reportable Dental Visits
- 5) DQM-WL2INP Potentially Workload Reportable Inpatient Visits

Each report provides a summary view of the extent of the problem and enough detail to correct the problem. These reports should help sending sites identify workload reportable visits that are not included on the Workload reports, as well as visits that potentially could be workload reportable and subsequently included on workload reports.

To display a Workload report,

1. In the Folders pane on the left, expand your Area’s folder.
2. Click the “WL Related” folder.
3. The list of reports will be displayed in the Details pane.

To view the most recent version of the report, double-click the report name. To view a previous version of the report, right click on the report name and then select ‘History’.

Title	Last Run	Type	Owner	Instances
DQM-WL1 WL Reportable Visits Not Included	Mar 22, 2011 1:23 PM	Crystal Report	ycadman	7
DQM-WL2APC Potentially Workload Reportab	Mar 22, 2011 4:28 AM	Crystal Report	ycadman	7
DQM-WL2CON Potentially Workload Reportab	Mar 22, 2011 4:34 AM	Crystal Report	ycadman	7
DQM-WL2DEN Potentially Workload Reportab	Mar 22, 2011 11:38 AM	Crystal Report	ycadman	7
DQM-WL2INP Potentially Workload Reportab	Mar 22, 2011 1:00 PM	Crystal Report	ycadman	7

Total: 5 objects

Figure 8 - Data Quality Mart WL Report Listing

## DQM-WL1 WL Reportable Visits Not Included on Workload Report

For each Area and exporting Facility or export file type, the **WL Reportable Visits Not Included on Workload** reports show all visits (APC, Inpatient, Dental, Contract Inpatient, Contract Outpatient) marked as workload reportable but not included on the Workload reports, because the date field used by workload verification reports is missing or invalid, or the facility code used by these reports is missing or invalid.

---

**Note:** As of November 2010, this report shows only visit records loaded into NDW during the last three fiscal years.

---



## Viewing the Summary Report

The main view provides a quantified summary of the visits, showing the total number of workload reportable visits not included on workload verification reports, as well as the number of visits affected by problems related to facility validation or date validation.

The following figure shows an example of the summarized view of the 'DQM-WL1 WL Reportable Visits Not Included on Workload' report.

Exporting Facility / Export File Type	Total # of WLR Visits not Included	Facility Validation		Date Validation	
		Location of Encounter Missing / Invalid	Authorizing Missing / Invalid	Service Date Missing / Invalid	Discharge Date Missing / Invalid
CHS FI - STATRECS	5,316		0 / 0	5,315 / 1	
HL7 912601 BIG ISLAND HOSPITAL	54	5 / 1		2 / 2	48 / 0
HL7 912211 KAUAI HEALTH CENTER	3		0 / 0	0 / 2	0 / 1
<b>Area Total:</b>	<b>5,327</b>	<b>0 / 0</b>	<b>0 / 0</b>	<b>5,315 / 3</b>	<b>2 / 1</b>

Figure 9 "DQM-WL1 WL Reportable Visits Not Included on Workload"

Column Header	Description
<b>Exporting Facility/Export File Type</b>	Code and Facility Name of the exported encounter data or export file type. Depending on export file type received by NPIRS, the exporting facility may not be available. When it is not available, the export file type is provided for tracking purposes.
<b>Total # of WLR Visits Not Included</b>	Total count of workload reportable visits that are not included on any of the Workload reports, because the date field that these reports are based is missing, could not be calculated, or falls beyond the end date of the current fiscal year, or the required facility code (location of encounter for direct visits or authorizing facility for contract visits) is missing or invalid (does not exist in the IHS Standard Code Book).
<b>Location of Encounter Missing/Invalid</b>	Number of direct workload reportable visits with no location of encounter facility code or with a location of encounter facility code not found in the IHS Standard Code Book.
<b>Authorizing Missing/Invalid</b>	Number of contract workload reportable visits with no authorizing facility code or with an authorizing facility code not found in the IHS Standard Code Book.

Column Header	Description
<b>Service Date Missing/Invalid</b>	Number of workload reportable visits with date of service or admission date missing or invalid. The service date is counted as invalid when it falls before 01/01/1955 or beyond the end date of the current fiscal year. In the case of inpatient visits, the admission date is invalid when it falls after the discharge date
<b>Discharge Date Missing/Invalid</b>	Number of workload reportable inpatient visits with discharge date missing or invalid. The discharge date is counted as invalid when it falls before 01/01/1955 or beyond the end date of the current fiscal year, or it falls before the admission date.

## Viewing Report Details

The detail view provides record-level identification of the problems, allowing corrective action. Double-clicking on any listed **Exporting Facility/Export File Type** (blue font), displays the details of the selected report.

The following figure shows an example of a detailed view of the 'DQM-WL1 WL Reportable Visits Not Included on Workload' report.

WL Reportable Visits Not Included on Workload Reports						
DETAIL for: <a href="#">HL7 912601 BIG ISLAND HO</a>						
Encounter Code or Export File Name	Visit Type	Authorization Number	LOE Facility	Authorizing Facility	Service Date	Discharge Date
993810000744268	Inpatient		912601 BIG ISLAND HO		1/24/2005	MISSING
993810000897586	Inpatient		912601 BIG ISLAND HO		8/22/2005	MISSING
993810000897636	Inpatient		912601 BIG ISLAND HO		7/19/2005	MISSING
993810000897972	Inpatient		MISSING		7/8/2005	MISSING
993810000897999	Inpatient		MISSING		7/11/2005	MISSING
993810000898770	Inpatient		912601 BIG ISLAND HO		4/7/2006	MISSING
993810000899506	Inpatient		912601 BIG ISLAND HO		4/7/2006	MISSING
993810000899788	Inpatient		912689 INVALID		7/8/2005	8/1/2005
993810000899841	Inpatient		912601 BIG ISLAND HO		4/7/2006	MISSING
993810000900977	Inpatient		912601 BIG ISLAND HO		7/11/2005	MISSING
993810000900988	Inpatient		912601 BIG ISLAND HO		MISSING	MISSING
993810000900995	Inpatient		912601 BIG ISLAND HO		7/8/2005	MISSING
993810000901006	Inpatient		912601 BIG ISLAND HO		9/6/2005	MISSING
993810000901045	Inpatient		912601 BIG ISLAND HO		9/6/2005	MISSING
993810000901049	Inpatient		912601 BIG ISLAND HO		8/13/2005	MISSING
993810000921014	Inpatient		912601 BIG ISLAND HO		7/1/2006	MISSING
993810000921019	Ambulatory		912601 BIG ISLAND HO		MISSING	MISSING
993810001463500	Ambulatory		912601 BIG ISLAND HO		8/10/1950	INVALID
993810001690372	Inpatient		912601 BIG ISLAND HO		8/2/2006	MISSING
993810001717611	Inpatient		912601 BIG ISLAND HO		7/16/2007	MISSING
993810001733489	Inpatient		912601 BIG ISLAND HO		12/7/2008	INVALID
993810001733497	Inpatient		912601 BIG ISLAND HO		2/6/2007	MISSING

Figure 10 "DQM-WL1 WL Reportable Visits Not Included on Workload"

Column Header	Description
<b>Encounter Code or Export File Name</b>	<p>The unique encounter record identifier generated by the source system is displayed when available (HL7 and SFE files).</p> <p>The unique encounter code consists of the 5-digit exporting database identifier concatenated with zero filled IEN (Internal Entry Number) of the source system encounter record, and should allow record-level tracking (at the sending site) of these visits.</p> <p>If the unique encounter code is not available (CHSSTAT, STATRECS, DENTSTAT files), the export file name is displayed. The export file name, in combination with other information under headings like Authorization Number, Authorizing Facility, should allow record-level tracking of these visits.</p>
<b>Visit Type</b>	Information about type of visit having problems.
<b>Authorization Number</b>	The authorization number for contract visits only; it can be used in conjunction with the export file name and authorizing facility to identify these visit (purchase order) records at the source system.
<b>LOE Facility</b>	<p>Record-level information for direct visits only, about location of encounter facility validation. The location of encounter facility code and facility name appears only when the code is valid.</p> <p>INVALID (red, bold font) indicates an invalid code MISSING (red, bold font) indicates no code.</p>
<b>Authorizing Facility</b>	<p>Record-level information for contract visits only, about authorizing facility validation. The authorizing facility code and facility name appears only when the code is valid.</p> <p>INVALID (red, bold font) indicates an invalid code MISSING (red, bold font) indicates no code.</p>
<b>Service Date</b>	<p>Record-level information about date of service (admission date for inpatient visits) validation.</p> <p>The service date is considered invalid when it falls before 01/01/1955 or beyond the end date of the current fiscal year. In the case of inpatient visits, an admission that date falls after discharge date is considered invalid.</p> <p>Valid date value is displayed in regular font. INVALID (red, bold font) indicates an invalid date MISSING (red, bold font) indicates no date.</p>
<b>Discharge Date</b>	<p>Record level information about discharge date validation.</p> <p>The discharge date is considered invalid when it falls before 01/01/1955 or beyond the end date of the current fiscal year, or it falls before admission date.</p> <p>Valid date value is displayed in regular font. INVALID (red, bold font) indicates an invalid date MISSING (red, bold font) indicates no date.</p>

## DQM-WL2APC Potentially Workload Reportable Ambulatory Visits

For each Area and location of encounter facility, the **Potentially Workload Reportable Ambulatory Visits** reports show ambulatory visits within a specified date range that could potentially be workload reportable but are not, because essential data elements that decide ambulatory visit workload reportability status are either missing or have values outside IHS proprietary code sets. These data elements include:

- 1A Facility Designation Flag
- Service type
- Service Category
- Provider Code
- Clinic Code
- Diagnosis Code

**Note:** Per Stat Officers' request, an automatic delay has been built into this report in order to minimize incomplete encounters being shown as errors. Records containing errors do not appear until 1 month AFTER they are loaded in the NDW.

### Viewing the Summary Report

The main view displays a quantified summary of potentially workload reportable ambulatory visits, showing total numbers of these visits as well as the number of visits affected by problems related to these essential data elements.

The following figure shows an example of the summarized view of the 'DQM-WL2APC Potentially Workload Reportable Ambulatory Visits' report.

Location of Encounter Facility	Total # of Potentially WLR Visits	Non APC Facility	Service Type Missing/Invalid	Service Category Missing/Invalid	Provider Missing/Invalid	Clinic Missing/Invalid	Diagnosis Missing
912601 BIG ISLAND HOSPITAL	2,682	0	0 / 0	0 / 0	2,635 / 5	235 / 2	53
912211 KAUAI HEALTH CENTER	8	0	0 / 0	0 / 0	0 / 0	0 / 0	8
912230 LANAI HEALTH CENTER	112	0	0 / 0	0 / 0	111 / 0	102 / 0	1
912310 MAUI HEALTH CENTER	33,554	0	0 / 0	0 / 0	33,540 / 0	11,076 / 0	33
912810 MOLOKAI HEALTH CENTER	3,073	0	0 / 0	0 / 0	3,050 / 0	2 / 0	40
912851 OAHU HEALTH LOCATION	81	0	0 / 0	0 / 0	78 / 0	79 / 0	1
<b>AREA Total:</b>	<b>39,510</b>	<b>0</b>	<b>0 / 0</b>	<b>0 / 0</b>	<b>39,414 / 5</b>	<b>11,494 / 2</b>	<b>136</b>

Figure 11 "DQM-WL2APC Potentially Workload Reportable Ambulatory Visits"

Column Header	Description
<b>Location of Encounter Facility</b>	Location of encounter facility code and name.
<b>Total # of Potentially WLR Visits</b>	Total count of ambulatory visits that could potentially be workload reportable.
<b>Non APC Facility</b>	Number of ambulatory visits currently marked as not workload reportable because location of encounter facility is not designated as a 1A facility.
<b>Service Type Missing/Invalid</b>	Number of ambulatory visits marked as not workload reportable with service type code missing or invalid (not found in the IHS Standard Code Book).
<b>Service Category Missing/Invalid</b>	Number of ambulatory visits marked as not workload reportable with service category code missing or invalid (not found in the IHS Standard Code Book).
<b>Provider Missing/Invalid</b>	Number of ambulatory visits marked as not workload reportable with provider code missing or invalid (not found in the IHS Standard Code Book).
<b>Clinic Missing/Invalid</b>	Number of ambulatory visits marked as not workload reportable with clinic code missing or invalid (not found in the IHS Standard Code Book).
<b>Diagnosis Missing</b>	Number of ambulatory visits marked as not workload reportable without at least one diagnosis code. <b>Note:</b> This workload requirement applies only to visits starting in FY 2008.

## Viewing Report Details

The detail view provides record-level identification of the problems, allowing corrective action. Double-clicking on any listed **Location of Encounter Facility** (blue font), displays the details of the selected report.

The following figure shows an example of a detailed view of the '*DQM-WL2APC Potentially Workload Reportable Ambulatory Visits*' report.

Potentially Workload Reportable Ambulatory Visits								
DETAIL for : 912601 BIG ISLAND HOSPITAL							Print Date: 3/19/2008	
Exporting Facility	Encounter Code	Service Date	APC Facility	Service Type	Service Category	Provider	Clinic	Diagnosis
912601	913810001585823	10/16/2007	YES	I IHS	A AMBULATORY	<b>MISSING</b>	34 PHYSICAL THERAPY	EXIST
912601	913810001587215	10/18/2007	YES	I IHS	A AMBULATORY	<b>MISSING</b>	<b>MISSING</b>	EXIST
912601	913810001588630	10/20/2007	YES	I IHS	A AMBULATORY	10 PHYSICAL THERAPIST	<b>E1 INVALID</b>	EXIST
912601	913810001588644	10/20/2007	YES	I IHS	A AMBULATORY	10 PHYSICAL THERAPIST	<b>E1 INVALID</b>	EXIST
912601	913810001588653	10/20/2007	YES	I IHS	A AMBULATORY	10 PHYSICAL THERAPIST	<b>E1 INVALID</b>	EXIST
912601	913810001588929	10/20/2007	YES	I IHS	A AMBULATORY	10 PHYSICAL THERAPIST	<b>MISSING</b>	EXIST
912601	913810001589627	10/23/2007	YES	I IHS	A AMBULATORY	<b>XX INVALID</b>	80 URGENT CARE	EXIST
912601	913810001591584	10/25/2007	YES	I IHS	A AMBULATORY	<b>AB INVALID</b>	39 PHARMACY	EXIST
912601	913810001592104	10/26/2007	YES	I IHS	A AMBULATORY	<b>XX INVALID</b>	01 GENERAL	EXIST
912601	913810001593343	10/27/2007	YES	I IHS	A AMBULATORY	<b>MISSING</b>	<b>MISSING</b>	EXIST
912601	913810001595486	11/1/2007	YES	I IHS	A AMBULATORY	<b>MISSING</b>	39 PHARMACY	EXIST
912601	913810001595649	11/1/2007	YES	I IHS	A AMBULATORY	<b>MISSING</b>	30 EMERGENCY	EXIST
912601	913810001595829	11/1/2007	YES	I IHS	A AMBULATORY	<b>MISSING</b>	39 PHARMACY	EXIST
912601	913810001598383	11/6/2007	YES	I IHS	A AMBULATORY	<b>MISSING</b>	<b>MISSING</b>	EXIST
912601	913810001599131	11/8/2007	YES	I IHS	A AMBULATORY	<b>MISSING</b>	25 OTHER	EXIST
912601	913810001599135	11/8/2007	YES	I IHS	A AMBULATORY	<b>MISSING</b>	25 OTHER	EXIST
912601	913810001601311	11/13/2007	YES	I IHS	A AMBULATORY	<b>MISSING</b>	76 LABORATORY	EXIST
912601	913810001604026	11/17/2007	YES	I IHS	A AMBULATORY	00 MD	<b>MISSING</b>	EXIST
912601	913810001605152	11/20/2007	YES	I IHS	A AMBULATORY	<b>MISSING</b>	<b>MISSING</b>	EXIST
912601	913810001608170	11/27/2007	YES	I IHS	A AMBULATORY	<b>MISSING</b>	<b>MISSING</b>	EXIST
912601	913810001608901	11/28/2007	YES	I IHS	A AMBULATORY	<b>MISSING</b>	25 OTHER	EXIST
912601	913810001614830	12/11/2007	YES	I IHS	A AMBULATORY	<b>MISSING</b>	39 PHARMACY	EXIST
912601	913810001615986	12/12/2007	YES	I IHS	A AMBULATORY	00 MD	06 DIABETIC	<b>MISSING</b>
912601	913810001615995	12/12/2007	YES	I IHS	A AMBULATORY	<b>MISSING</b>	06 DIABETIC	EXIST
912601	913810001617176	12/14/2007	YES	I IHS	A AMBULATORY	<b>MISSING</b>	06 DIABETIC	EXIST

Figure 12 "DQM-WL2APC Potentially Workload Reportable Ambulatory Visits"

Column Header	Description
<b>Exporting Facility</b>	Code and name of facility exporting this visit record.
<b>Encounter Code</b>	Unique encounter record identifier generated by the source system, composed of the 5-digit exporting database identifier concatenated with the zero filled IEN (Internal Entry Number) of the source system encounter record.
<b>Service Date</b>	Date of service for this visit.
<b>APC Facility</b>	Whether the location of encounter facility is designated in the Standard Code Book as a 1A facility, where YES (regular font) indicates that it is. NO (red, bold font) indicates that it is not.
<b>Service Type</b>	Record level information about service type code validation. The service type code and its name appear only when the code is valid. INVALID (red, bold font) indicates an invalid code. MISSING (red, bold font) indicates no code.
<b>Service Category</b>	Record level information about service category code validation. The service category code and its name appear only when the code is valid. INVALID (red, bold font) indicates an invalid code. MISSING (red, bold font) indicates no code.
<b>Provider</b>	Record level information about provider code validation. The provider code and its name appear only when the code is valid. INVALID (red, bold font) indicates an invalid code. MISSING (red, bold font) indicates no code.

Column Header	Description
<b>Clinic</b>	Record level information about clinic code validation. The clinic code and its name appear only when the code is valid. INVALID (red, bold font) indicates an invalid code. MISSING (red, bold font) indicates no code.
<b>Diagnosis</b>	Record level information about presence of at least one diagnosis code. EXIST indicates that there is at least one diagnosis code present for the visit. MISSING (red, bold font) indicates no code.

## DQM-WL2CON Potentially Workload Reportable Contract Visits

For each Area and authorizing Facility, the **Potentially Workload Reportable Contract Visits** reports show contract inpatient and outpatient visits within a specified date range that could potentially be workload reportable but are not, because the essential data element deciding the contract visit workload reportability status is either missing or has a value outside IHS proprietary code sets. For both contract inpatient and outpatient visits, the essential data element is **Provider Type** code.

### Viewing the Summary Report

The main view displays a quantified summary of potentially workload reportable contract inpatient and outpatient visits, showing the total number of these visits, as well as the number of visits affected by a missing or invalid provider type code.

The following figure shows an example of the summarized view of the 'DQM-WL2CON Potentially Workload Reportable Contract Visits' report.

Authorizing Facility	Total # of Potentially WLR Visits	Provider Type Missing/Invalid
912810 MOLOKAI HEALTH CENTER	29	4 / 25
912845 KAILUA-KONA	710	710 / 0
<b>AREA Total:</b>	<b>739</b>	<b>710 / 29</b>

Figure 13 "DQM-WL2CON Potentially Workload Reportable Contract Visits"

Column Header	Description
<b>Authorizing Facility</b>	Authorizing facility code and name.
<b>Total # of Potentially WLR Visits</b>	Total count of contract inpatient and contract outpatient visits that potentially could be workload reportable.
<b>Provider Type Missing/Invalid</b>	Number of contract visits marked as not workload reportable because the provider type code is missing or invalid (not found in the IHS Standard Code Book).

## Viewing Report Details

The detail view provides record-level identification of the problems, allowing corrective action. Double-clicking on any listed **Authorizing Facility** (blue font), displays the details of the selected report.

The following figure shows an example of a detailed view of the 'DQM-WL2CON Potentially Workload Reportable Contract Visits' report.

Exporting Facility	Encounter Code or Export Name	Authorizing Facility	Provider Type	Authorization Number	Service Date	Discharge Date	Visit Type
912810	990240000530575	912810	99 INVALID	07D7700	11/17/2007		CHS Outpatient
912810	990240000530576	912810	99 INVALID	07D7700	11/26/2007		CHS Outpatient
912810	990240000530577	912810	99 INVALID	07D7700	12/17/2007		CHS Outpatient
912810	990240000530578	912810	MISSING	07D7700	10/2/2007		CHS Outpatient
912810	990240000530579	912810	MISSING	07D7700	10/7/2007		CHS Outpatient
912810	990240000530582	912810	MISSING	07D7700	11/20/2007		CHS Outpatient
912810	990240000530583	912810	MISSING	07D7700	11/17/2007		CHS Outpatient
912810	990240000530584	912810	99 INVALID	07D7700	10/16/2007		CHS Outpatient
912810	990240000530588	912810	99 INVALID	07D7700	12/2/2007		CHS Outpatient
912810	990240000530589	912810	99 INVALID	07D7700	12/6/2007		CHS Outpatient
912810	990240000530593	912810	99 INVALID	07D7700	12/12/2007		CHS Outpatient
912810	990240000530594	912810	99 INVALID	07D7700	12/11/2007		CHS Outpatient
912810	990240000533524	912810	99 INVALID	07D7701	1/19/2007		CHS Outpatient
912810	990240000533525	912810	99 INVALID	07D7701	1/19/2007		CHS Outpatient
912810	990240000533526	912810	99 INVALID	07D7701	1/21/2007		CHS Outpatient
912810	990240000533544	912810	99 INVALID	07D7701	10/1/2007		CHS Outpatient
912810	990240000533875	912810	99 INVALID	07D7701	3/10/2007		CHS Outpatient
912810	990240000538332	912810	99 INVALID	07D7701	3/24/2007		CHS Outpatient
912810	990240000538333	912810	99 INVALID	07D7701	3/3/2007		CHS Outpatient
912810	990240000540181	912810	99 INVALID	07D7701	4/13/2007		CHS Outpatient
912810	990240000540182	912810	99 INVALID	07D7701	5/20/2007		CHS Outpatient
912810	990240000540266	912810	99 INVALID	07D7702	5/14/2007		CHS Outpatient
912810	990240000543917	912810	99 INVALID	07D7702	6/20/2007		CHS Outpatient
912810	990240000544013	912810	99 INVALID	07D7702	7/3/2007		CHS Outpatient

Figure 14 "DQM-WL2CON Potentially Workload Reportable Contract Visits"



Column Header	Description
<b>Exporting Facility</b>	Code and name of facility exporting this visit record, which is displayed only when it is available.
<b>Encounter Code or Export Name</b>	<p>The unique encounter record identifier generated by the source system is displayed when available (HL7 and SFE files).</p> <p>The unique encounter code consists of the 5-digit exporting database identifier concatenated with zero filled IEN (Internal Entry Number) of the source system encounter record, and should allow record-level tracking (at the sending site) of these visits.</p> <p>If the unique encounter code is not available (CHSSTAT, STATRECS, DENTSTAT files), the export file name is displayed. The export file name, in combination with other information under headings like Authorization Number, Authorizing Facility, should allow record-level tracking of these visits.</p>
<b>Authorizing Facility</b>	The authorizing facility code and facility name appears only when the code is valid.
<b>Provider Type Missing/Invalid</b>	<p>Record level information about provider type validation. The provider type and its name appear only when the code is valid.</p> <p>INVALID (red, bold font) indicates an invalid code</p> <p>MISSING (red, bold font) indicates no code.</p>
<b>Authorization Number</b>	The authorization number for this visit; it can be used in conjunction with the export file name and authorizing facility to identify these visit (purchase order) records at the source system.
<b>Service Date</b>	Date of service for the outpatient visit and admission date for the inpatient visit.
<b>Discharge Date</b>	Discharge date for this inpatient visit.
<b>Visit Type</b>	Displays the type of contract visit: contract outpatient or contract inpatient.

## DQM-WL2DEN Potentially Workload Reportable Dental Visits

For each Area and facility, the **Potentially Workload Reportable Dental Visits** reports show direct and contract dental visits within a specified date range that potentially could be workload reportable but are not, because the essential data element deciding the dental visit workload reportability status is missing. For all dental visits, the essential data element is the presence of at least one **ADA** code.

## Viewing the Summary Report

The main view displays a quantified summary of potentially workload reportable dental visits, showing the total number of these visits with no ADA code.

The following figure shows an example of the summarized view of the 'DQM-WL2DEN Potentially Workload Reportable Dental Visits' report.

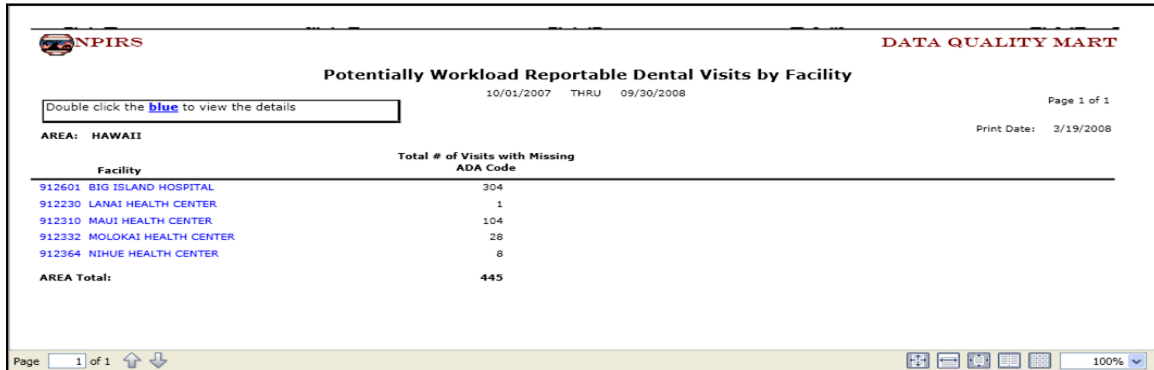


Figure 15 "DQM-WL2DEN Potentially Workload Reportable Dental Visits"

Column Header	Description
<b>Facility</b>	Authorizing facility code and name (Contract) or location of encounter facility code and name (Direct).
<b>Total # of Visits with Missing ADA Code</b>	Total count of dental visits marked as not workload reportable because these is not at least one ADA code).

## Viewing Report Details

The detail view provides record-level identification of the problems, allowing corrective action. Double-clicking on any listed **Facility** (blue font), displays the details of the selected report.

The following figure shows an example of a detailed view of the 'DQM-WL2DEN Potentially Workload Reportable Dental Visits' report.

Exporting Facility	Encounter Code or Export Name	ADA Code	Type of Visit	Service Date	Authorization Number
912310	994490001293852	<b>MISSING</b>	DIRECT	10/8/2007	
912310	994490001293458	<b>MISSING</b>	DIRECT	10/10/2007	
912310	994490001294698	<b>MISSING</b>	DIRECT	10/11/2007	
912310	994490001297995	<b>MISSING</b>	DIRECT	10/24/2007	
912310	994490001298282	<b>MISSING</b>	DIRECT	10/18/2007	
912310	994490001298514	<b>MISSING</b>	DIRECT	10/25/2007	
912310	994490001301149	<b>MISSING</b>	DIRECT	11/2/2007	
912310	994490001301498	<b>MISSING</b>	DIRECT	11/5/2007	
912310	994490001304049	<b>MISSING</b>	DIRECT	11/15/2007	
912310	994490001307054	<b>MISSING</b>	DIRECT	11/28/2007	
912310	994490001307130	<b>MISSING</b>	DIRECT	11/28/2007	
912310	994490001308870	<b>MISSING</b>	DIRECT	12/4/2007	
912310	994490001308936	<b>MISSING</b>	DIRECT	11/28/2007	
912310	994490001308951	<b>MISSING</b>	DIRECT	12/4/2007	
912310	994490001309042	<b>MISSING</b>	DIRECT	11/9/2007	
912310	994490001309047	<b>MISSING</b>	DIRECT	12/2/2007	
912310	994490001309261	<b>MISSING</b>	DIRECT	11/15/2007	
912310	994490001309421	<b>MISSING</b>	DIRECT	12/4/2007	
912310	994490001309639	<b>MISSING</b>	DIRECT	11/5/2007	
912310	994490001309695	<b>MISSING</b>	DIRECT	11/21/2007	
912310	994490001309738	<b>MISSING</b>	DIRECT	11/28/2007	
912310	994490001309743	<b>MISSING</b>	DIRECT	11/6/2007	
912310	994490001309766	<b>MISSING</b>	DIRECT	12/5/2007	
912310	994490001309768	<b>MISSING</b>	DIRECT	11/9/2007	
912310	994490001310262	<b>MISSING</b>	DIRECT	11/6/2007	
912310	994490001310355	<b>MISSING</b>	DIRECT	11/15/2007	

Figure 16 "DQM-WL2DEN Potentially Workload Reportable Dental Visits"

Column Header	Description
<b>Exporting Facility</b>	Code and name of facility exporting this visit record, which is displayed only when it is available.
<b>Encounter Code or Export Name</b>	The unique encounter record identifier generated by the source system is displayed when available (HL7 and SFE files).  The unique encounter code consists of the 5-digit exporting database identifier concatenated with zero filled IEN (Internal Entry Number) of the source system encounter record, and should allow record-level tracking (at the sending site) of these visits.  If the unique encounter code is not available (CHSSTAT, STATRECS, DENTSTAT files), the export file name is displayed. The export file name, in combination with other information under headings like Authorization Number, Authorizing Facility, should allow record-level tracking of these visits.
<b>ADA Code</b>	A valid visit must have at least one ADA code. INVALID (red, bold font) indicates an invalid code MISSING (red, bold font) indicates no code.
<b>Service Date</b>	Date of service for the dental visit.

Column Header	Description
Type of Visit	The type of Dental visit: CONTRACT or DIRECT.
Authorization Number	The authorization number for contract dental visits only; it can be used in conjunction with the export file name and authorizing facility to identify these visit (purchase order) records at the source system.

## DQM-WL2INP Potentially Workload Reportable Inpatient Visits

For each Area and Location of Encounter Facility, the **Potentially Workload Reportable Inpatient Visits** reports show direct inpatient visits within a specified date range that could potentially be workload reportable but are not, because the essential data element deciding inpatient visit workload reportability status is missing. Starting with FY 2008, the data element is a **Primary Diagnosis** code.

### Viewing the Summary Report

The main view displays a quantified summary of potentially workload reportable inpatient visits, showing the total number of these visits with no primary diagnosis code.

The following figure shows an example of the summarized view of the 'DQM-WL2INP Potentially Workload Reportable Inpatient Visits' report.

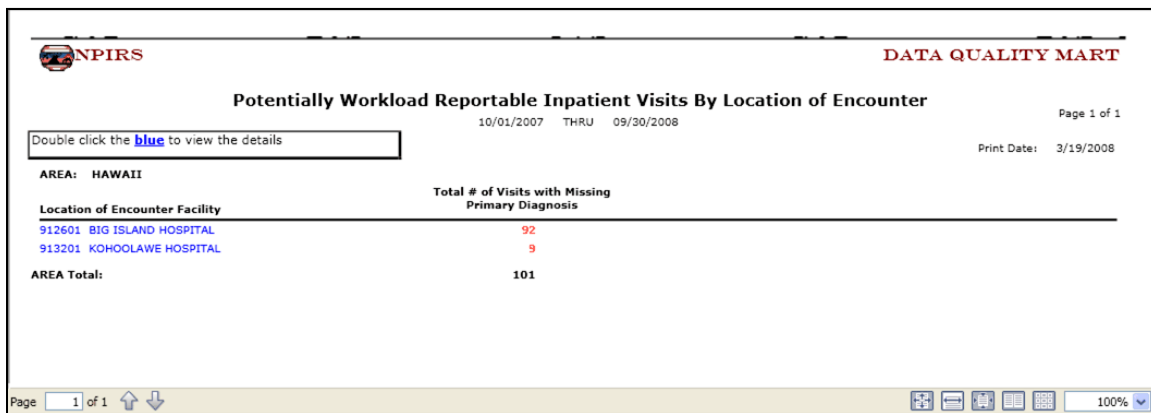


Figure 17 "DQM-WL2INP Potentially Workload Reportable Inpatient Visits"

Column Header	Description
Location of Encounter Facility	Location of encounter facility code and name.
Total # of Visits with Missing Primary Diagnosis	Total count of direct inpatient visits marked as not workload reportable because the primary diagnosis code is missing

## Viewing Report Details

The detail view provides record-level identification of the problems, allowing corrective action. Double-clicking on any listed **Location of Encounter Facility** (blue font), displays the details of the selected report.

The following figure shows an example of a detailed view of the 'DQM-WL2INP Potentially Workload Reportable Inpatient Visits' report.

Potentially Workload Reportable Inpatient Visits				
DETAIL for : 912601 BIG ISLAND HOSPITAL				Print Date: 3/19/2008
Exporting Facility	Encounter Code	Primary Diagnosis	Admission Date	Discharge Date
912601	983810004087441	MISSING	12/23/2007	01/04/2008
912601	983810004098681	MISSING	01/03/2008	01/04/2008
912601	983810004113993	MISSING	01/15/2008	01/22/2008
912601	983810004117773	MISSING	01/17/2008	01/22/2008
912601	983810004124501	MISSING	01/23/2008	01/28/2008
912601	983810004128579	MISSING	01/26/2008	01/27/2008
912601	983810004135192	MISSING	01/31/2008	02/02/2008
912601	983810004129114	MISSING	01/27/2008	01/30/2008
912601	983810004115871	MISSING	01/16/2008	01/28/2008
912601	983810004128420	MISSING	01/25/2008	02/03/2008
912601	983810004135193	MISSING	01/31/2008	02/02/2008
912601	983810004144743	MISSING	02/06/2008	02/07/2008
912601	983810004144914	MISSING	02/06/2008	02/08/2008
912601	983810004109831	MISSING	01/12/2008	01/18/2008
912601	983810004133128	MISSING	01/29/2008	02/02/2008
912601	983810004133323	MISSING	01/30/2008	02/05/2008
912601	983810004138936	MISSING	02/03/2008	02/08/2008
912601	983810004140411	MISSING	02/04/2008	02/11/2008
912601	983810004140499	MISSING	02/04/2008	02/08/2008
912601	983810004141377	MISSING	02/05/2008	02/08/2008
912601	983810004141976	MISSING	02/05/2008	02/06/2008
912601	983810004142015	MISSING	02/05/2008	02/09/2008
912601	983810004143185	MISSING	02/06/2008	02/08/2008
912601	983810004144804	MISSING	02/06/2008	02/08/2008
912601	983810004144933	MISSING	02/07/2008	02/09/2008
912601	983810004146756	MISSING	02/07/2008	02/10/2008
912601	983810004146941	MISSING	02/07/2008	02/10/2008

Figure 18 "DQM-WL2INP Potentially Workload Reportable Inpatient Visits"

Column Header	Description
<b>Exporting Facility</b>	Code and name of facility exporting this visit record.
<b>Encounter Code or Export Name</b>	The unique encounter record identifier generated by the source system is displayed when available (HL7 and SFE files). The unique encounter code consists of the 5-digit exporting database identifier concatenated with zero filled IEN (Internal Entry Number) of the source system encounter record, and should allow record-level tracking (at the sending site) of these visits.
<b>Primary Diagnosis</b>	INVALID (red, bold font) indicates an invalid code MISSING (red, bold font) indicates no code.
<b>Admission Date</b>	Admission date of the inpatient visit.
<b>Discharge Date</b>	Discharge date of the inpatient visit.