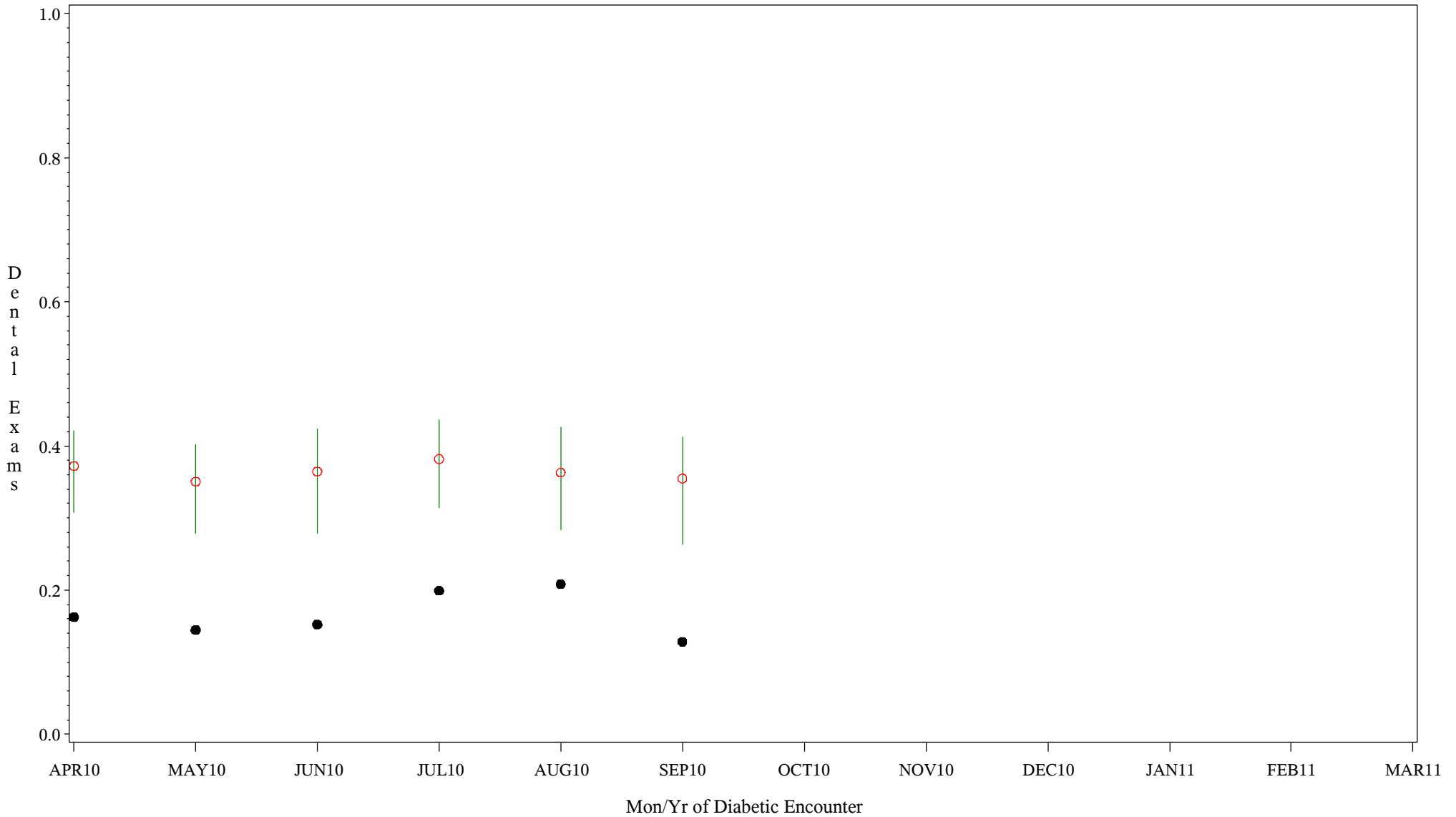


Comparison Chart for Diabetic Dental Health (#5089)

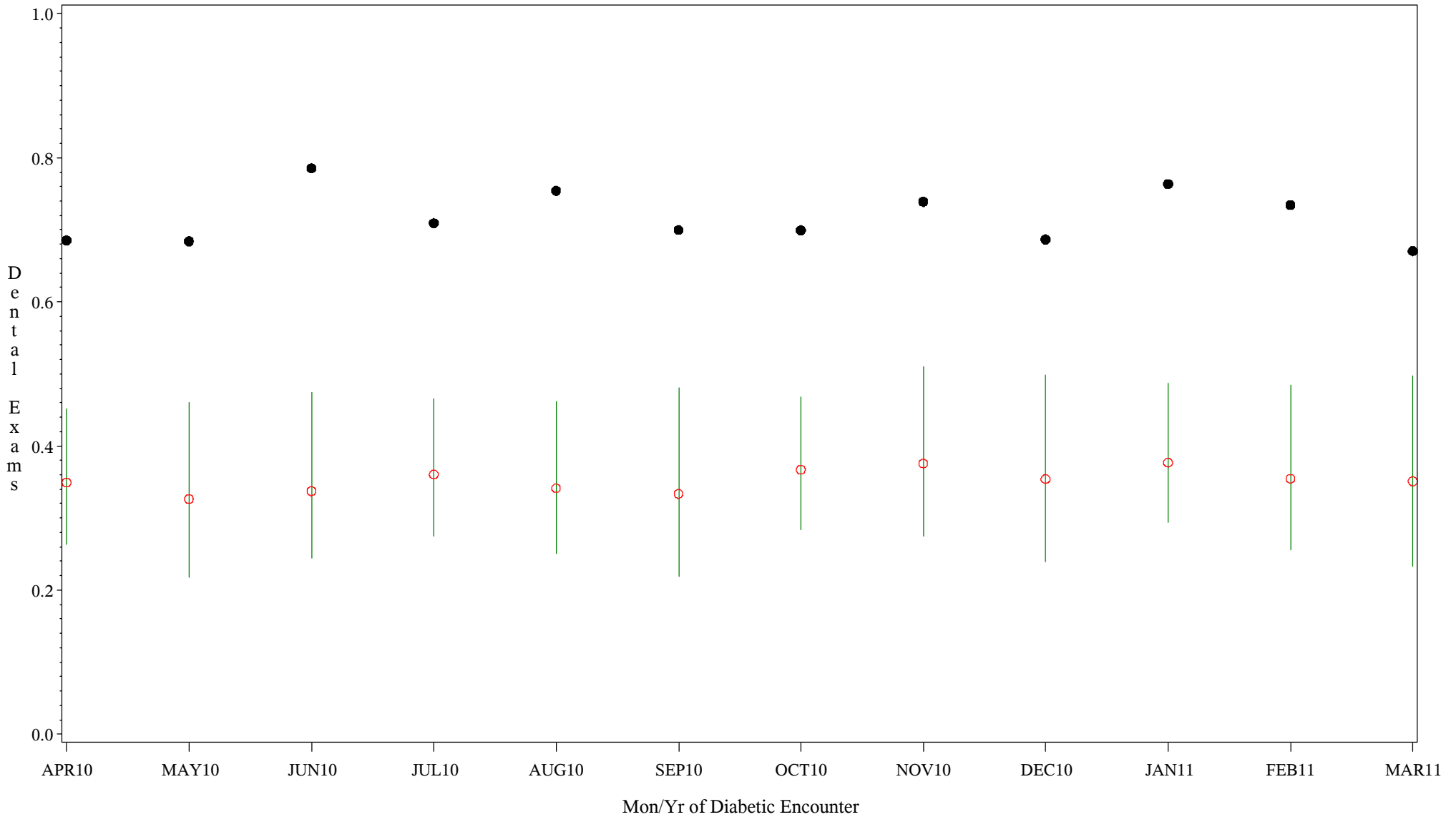
Time Period: April 1, 2010 - March 31, 2011
 Denominator=All Diabetic Patients, Numerator=Annual Dental Exam
 Chart created: Wednesday, 18MAY2011
 Hospital=Sells - Tucson



PLOT ● Organization's Observed Rate ○ Expected Rate-Comparison Group

Comparison Chart for Diabetic Dental Health (#5089)

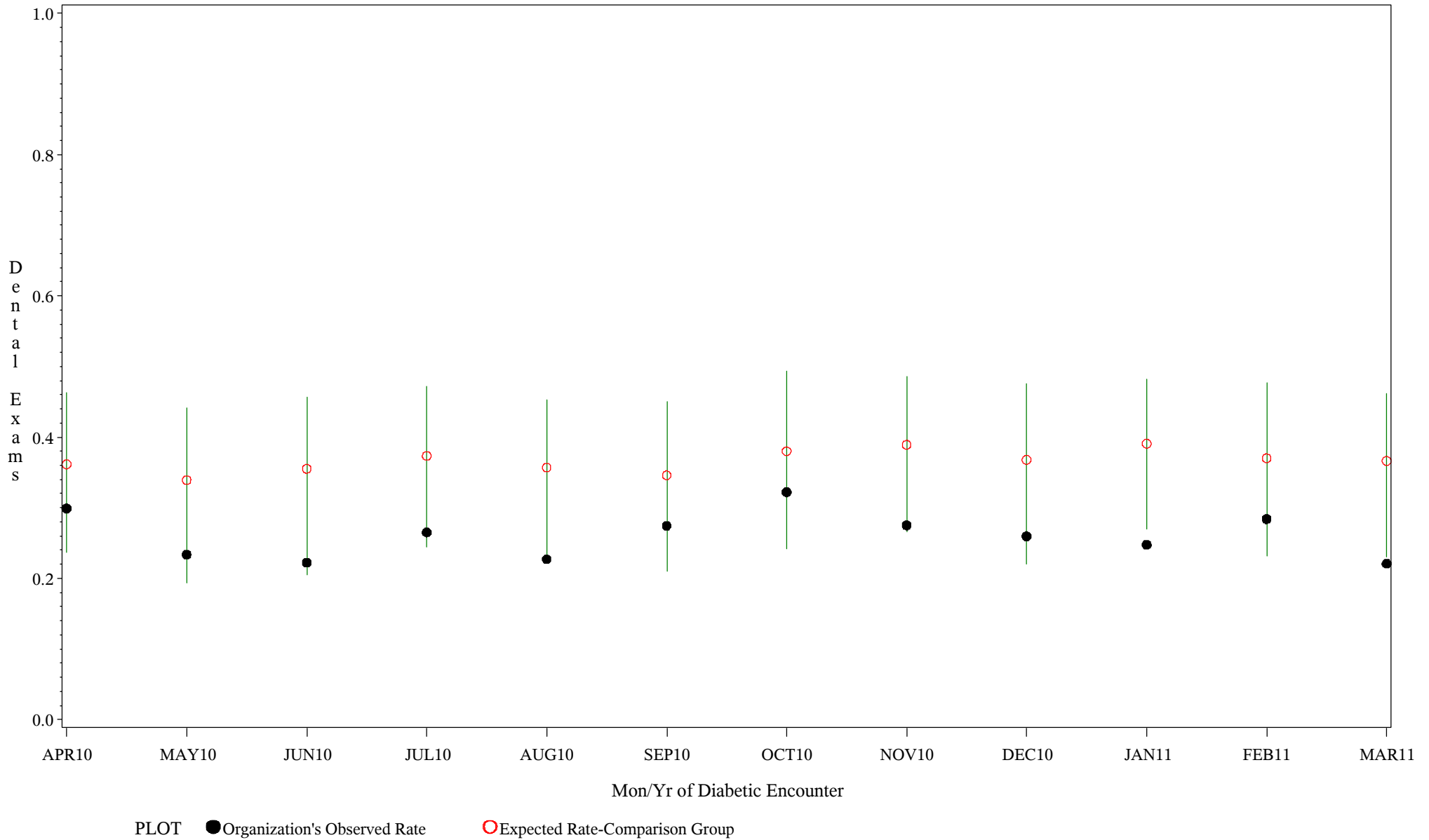
Time Period: April 1, 2010 - March 31, 2011
 Denominator=All Diabetic Patients, Numerator=Annual Dental Exam
 Chart created: Wednesday, 18MAY2011
 Hospital=Mescalero - Albuquerque



PLOT ● Organization's Observed Rate ○ Expected Rate-Comparison Group

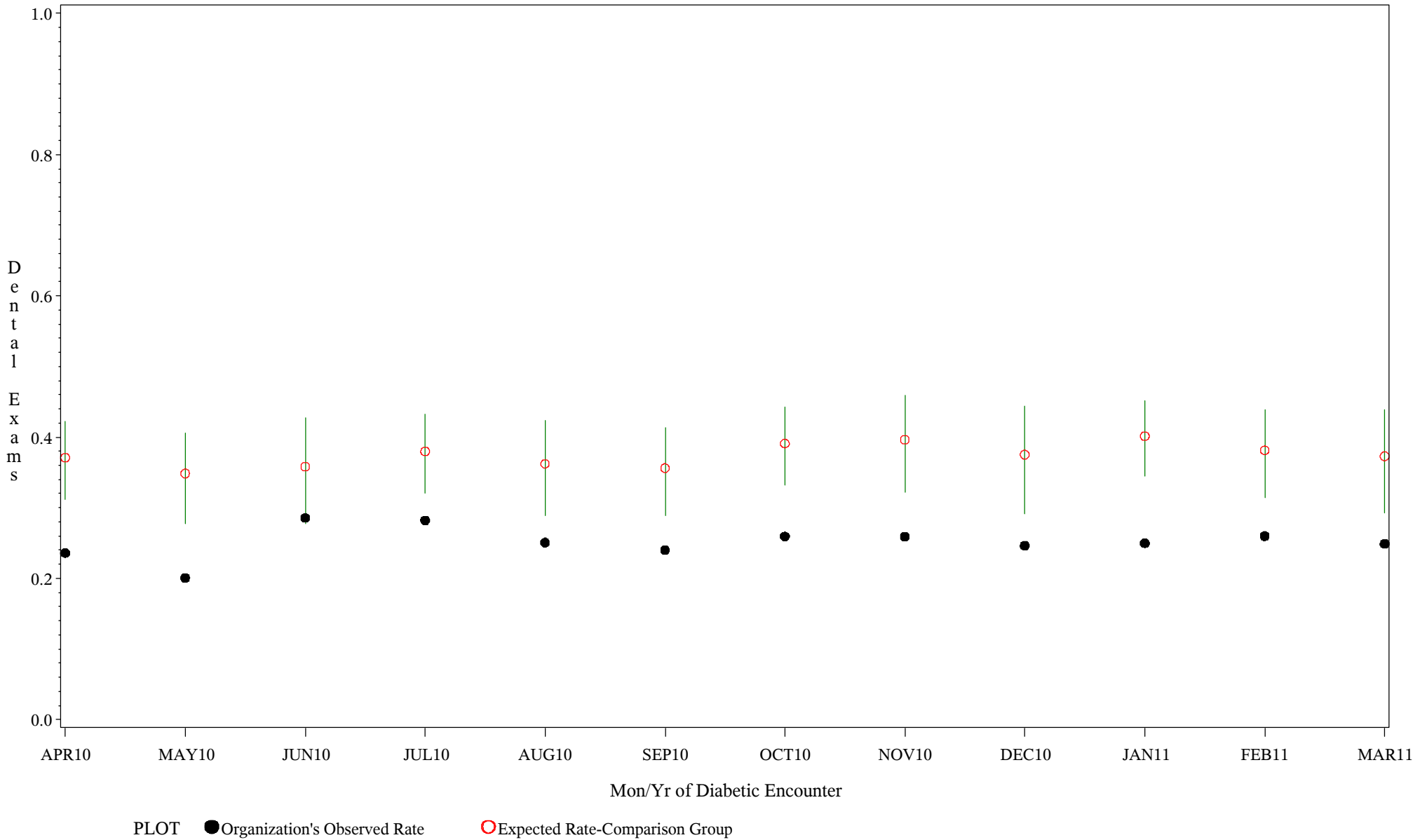
Comparison Chart for Diabetic Dental Health (#5089)

Time Period: April 1, 2010 - March 31, 2011
 Denominator=All Diabetic Patients, Numerator=Annual Dental Exam
 Chart created: Wednesday, 18MAY2011
 Hospital=Santa Fe - Albuquerque



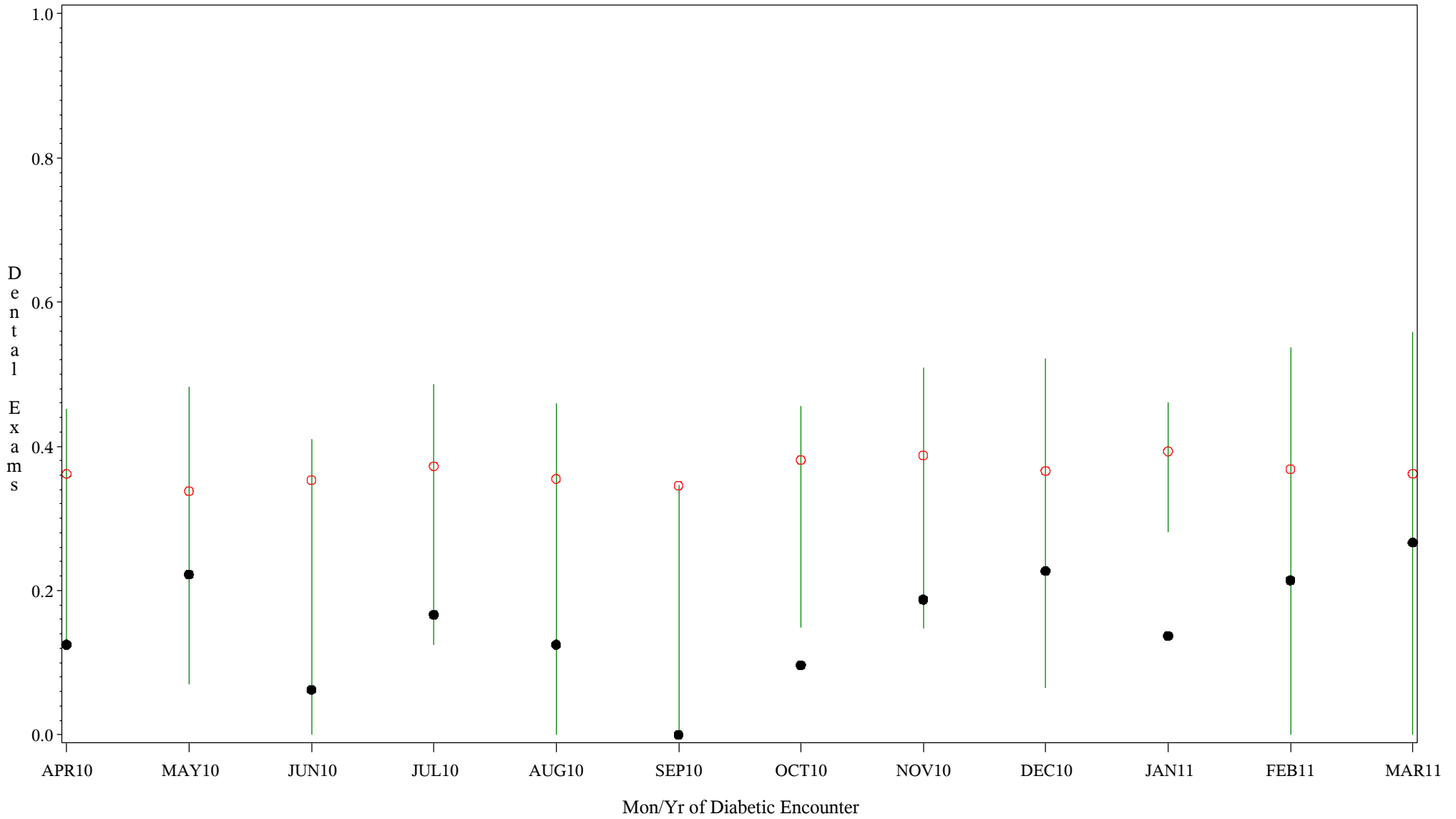
Comparison Chart for Diabetic Dental Health (#5089)

Time Period: April 1, 2010 - March 31, 2011
 Denominator=All Diabetic Patients, Numerator=Annual Dental Exam
 Chart created: Wednesday, 18MAY2011
 Hospital=Zuni - Albuquerque



Comparison Chart for Diabetic Dental Health (#5089)

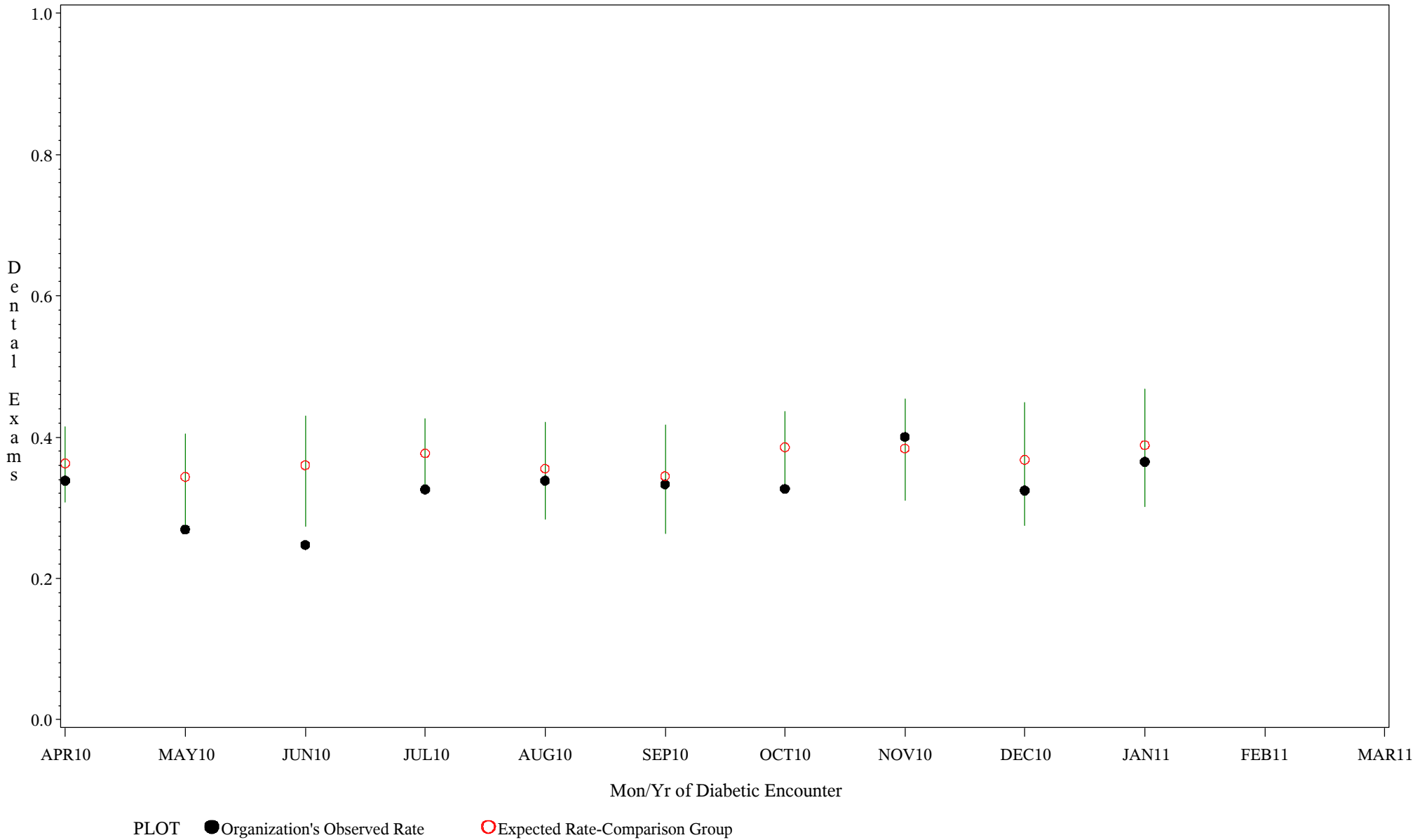
Time Period: April 1, 2010 - March 31, 2011
 Denominator=All Diabetic Patients, Numerator=Annual Dental Exam
 Chart created: Wednesday, 18MAY2011
 Hospital=Barrow - Alaska



PLOT ● Organization's Observed Rate ○ Expected Rate-Comparison Group

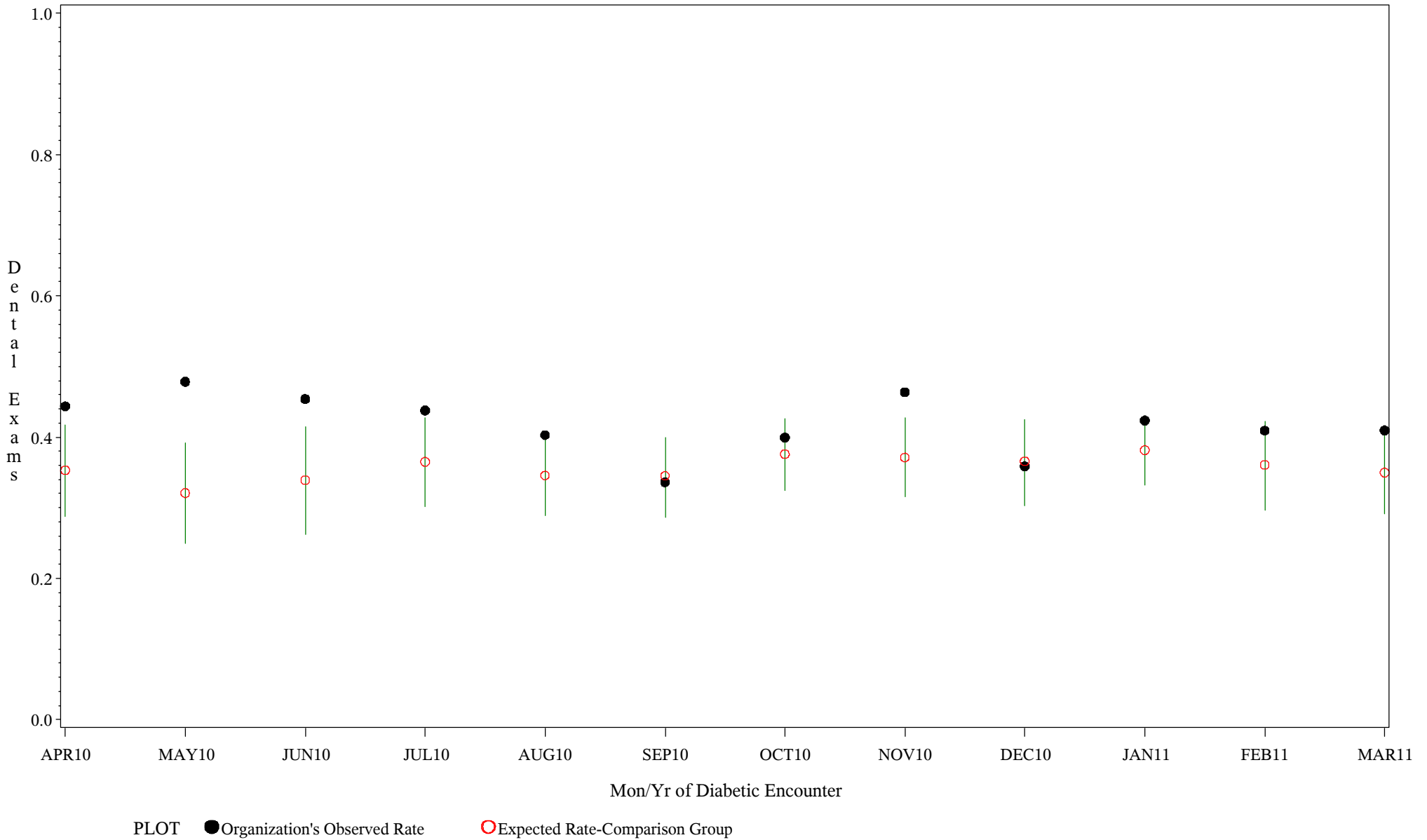
Comparison Chart for Diabetic Dental Health (#5089)

Time Period: April 1, 2010 - March 31, 2011
 Denominator=All Diabetic Patients, Numerator=Annual Dental Exam
 Chart created: Wednesday, 18MAY2011
 Hospital=Lawton - Oklahoma



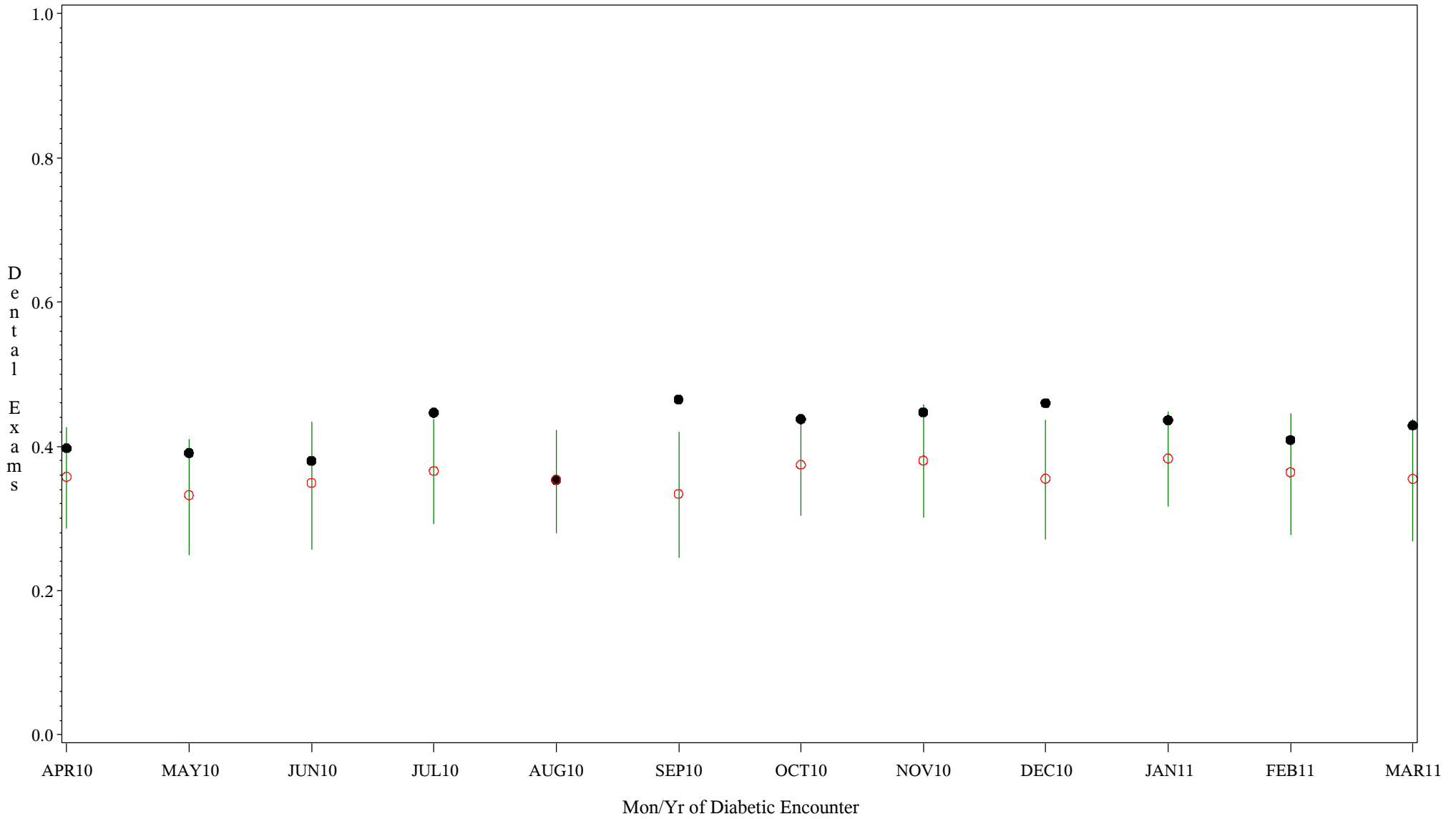
Comparison Chart for Diabetic Dental Health (#5089)

Time Period: April 1, 2010 - March 31, 2011
 Denominator=All Diabetic Patients, Numerator=Annual Dental Exam
 Chart created: Wednesday, 18MAY2011
 Hospital=Chickasaw Hospital - Oklahoma



Comparison Chart for Diabetic Dental Health (#5089)

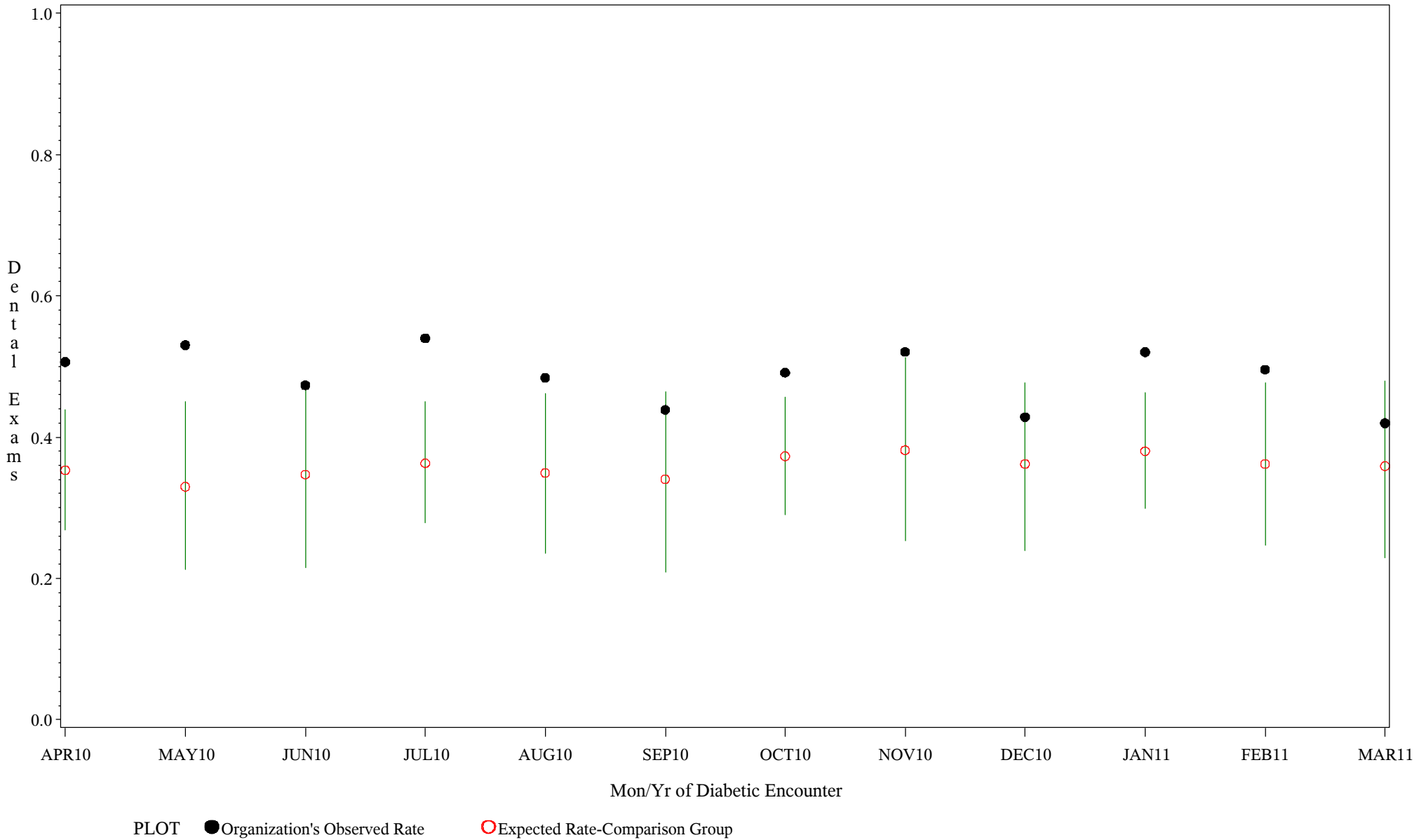
Time Period: April 1, 2010 - March 31, 2011
 Denominator=All Diabetic Patients, Numerator=Annual Dental Exam
 Chart created: Wednesday, 18MAY2011
 Hospital=Choctaw Hosp - Nashville



PLOT ● Organization's Observed Rate ○ Expected Rate-Comparison Group

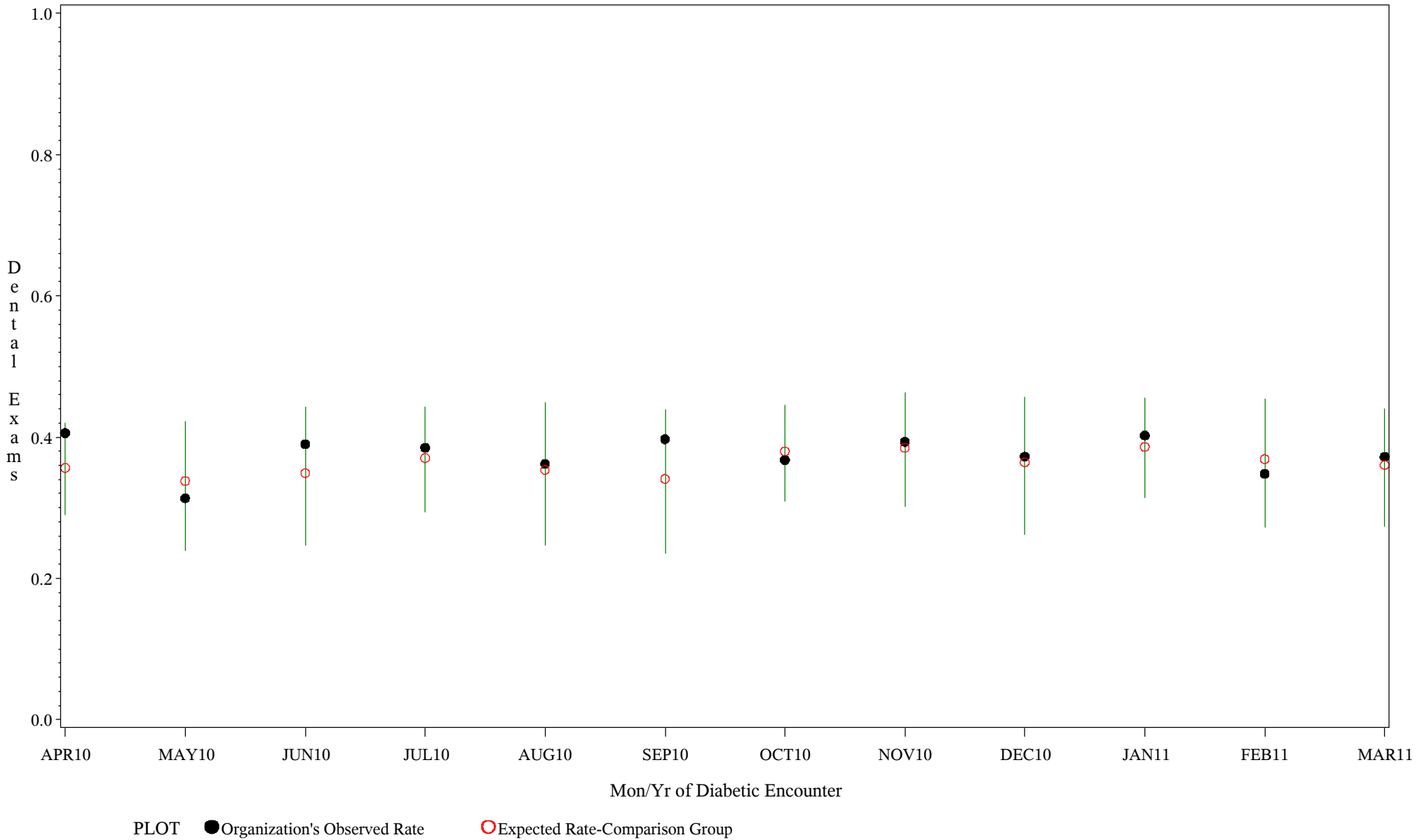
Comparison Chart for Diabetic Dental Health (#5089)

Time Period: April 1, 2010 - March 31, 2011
 Denominator=All Diabetic Patients, Numerator=Annual Dental Exam
 Chart created: Wednesday, 18MAY2011
 Hospital=Parker - Phoenix



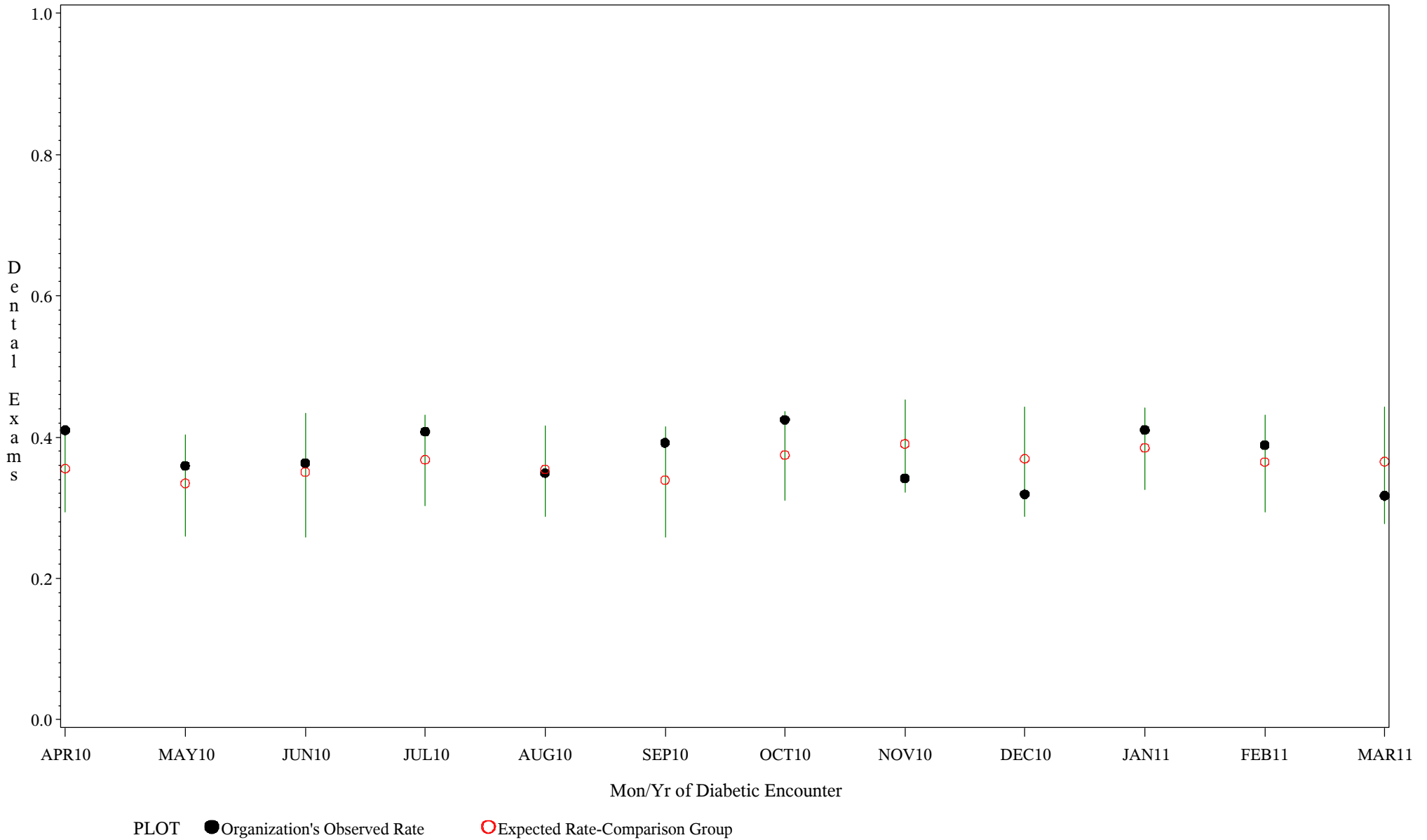
Comparison Chart for Diabetic Dental Health (#5089)

Time Period: April 1, 2010 - March 31, 2011
 Denominator=All Diabetic Patients, Numerator=Annual Dental Exam
 Chart created: Wednesday, 18MAY2011
 Hospital=San Carlos - Phoenix



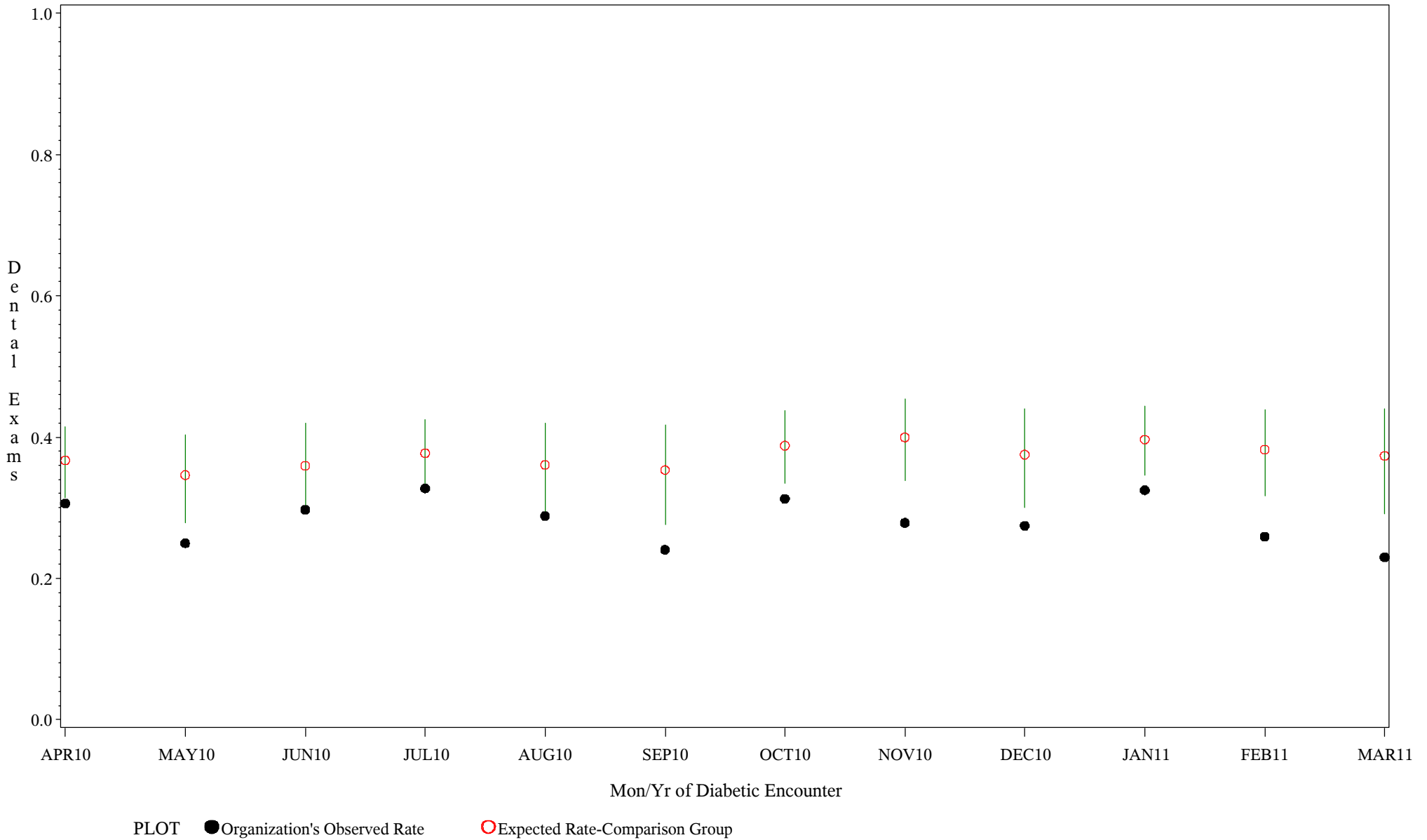
Comparison Chart for Diabetic Dental Health (#5089)

Time Period: April 1, 2010 - March 31, 2011
 Denominator=All Diabetic Patients, Numerator=Annual Dental Exam
 Chart created: Wednesday, 18MAY2011
 Hospital=White River - Phoenix



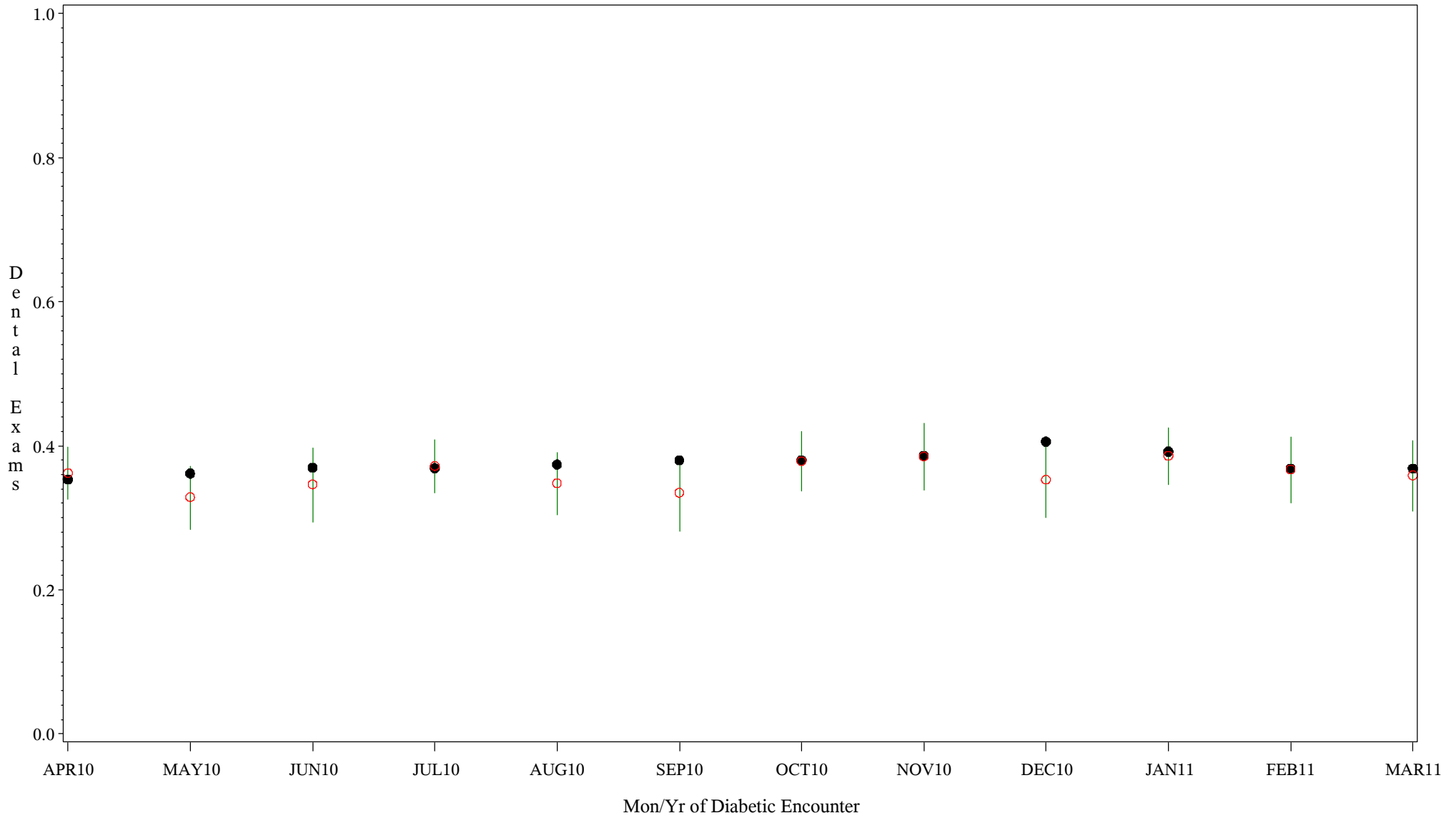
Comparison Chart for Diabetic Dental Health (#5089)

Time Period: April 1, 2010 - March 31, 2011
 Denominator=All Diabetic Patients, Numerator=Annual Dental Exam
 Chart created: Wednesday, 18MAY2011
 Hospital=Chinle - Navajo



Comparison Chart for Diabetic Dental Health (#5089)

Time Period: April 1, 2010 - March 31, 2011
 Denominator=All Diabetic Patients, Numerator=Annual Dental Exam
 Chart created: Wednesday, 18MAY2011
 Hospital=Shiprock - Navajo



PLOT ● Organization's Observed Rate ○ Expected Rate-Comparison Group