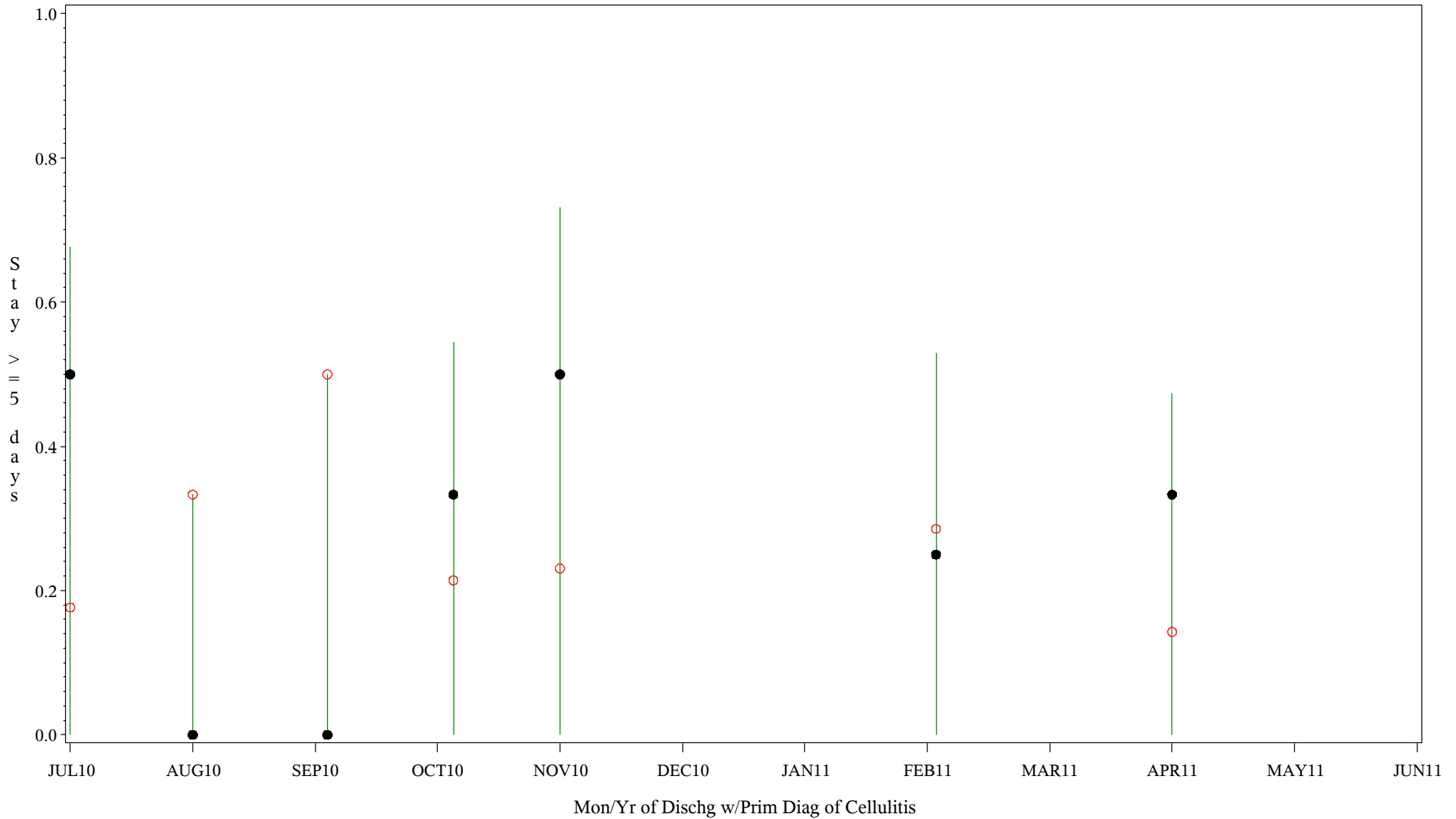


# Comp Chrt for Medical Mgmt of Cellulitis (#5086)

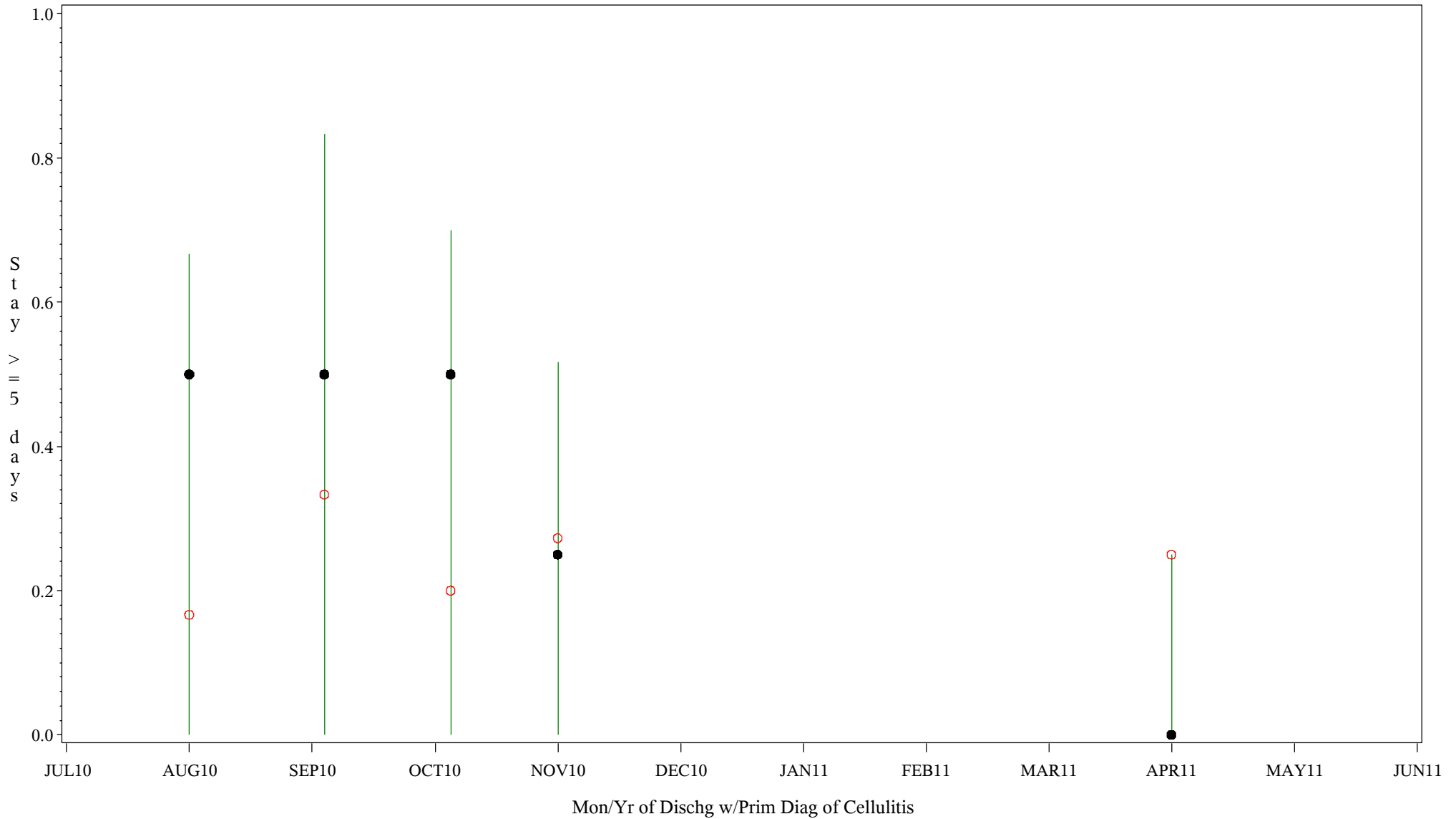
Time Period: July 1, 2010 - June 30, 2011  
 Denom=All Admit w/Prim Diagnosis of Cellulitis, Num=Stay >=5 days  
 Chart created: Monday, 22AUG2011  
 Hospital=Quentin N Burdick - Aberdeen



PLOT ● Organization's Observed Rate ○ Expected Rate-Comparison Group

# Comp Chrt for Medical Mgmt of Cellulitis (#5086)

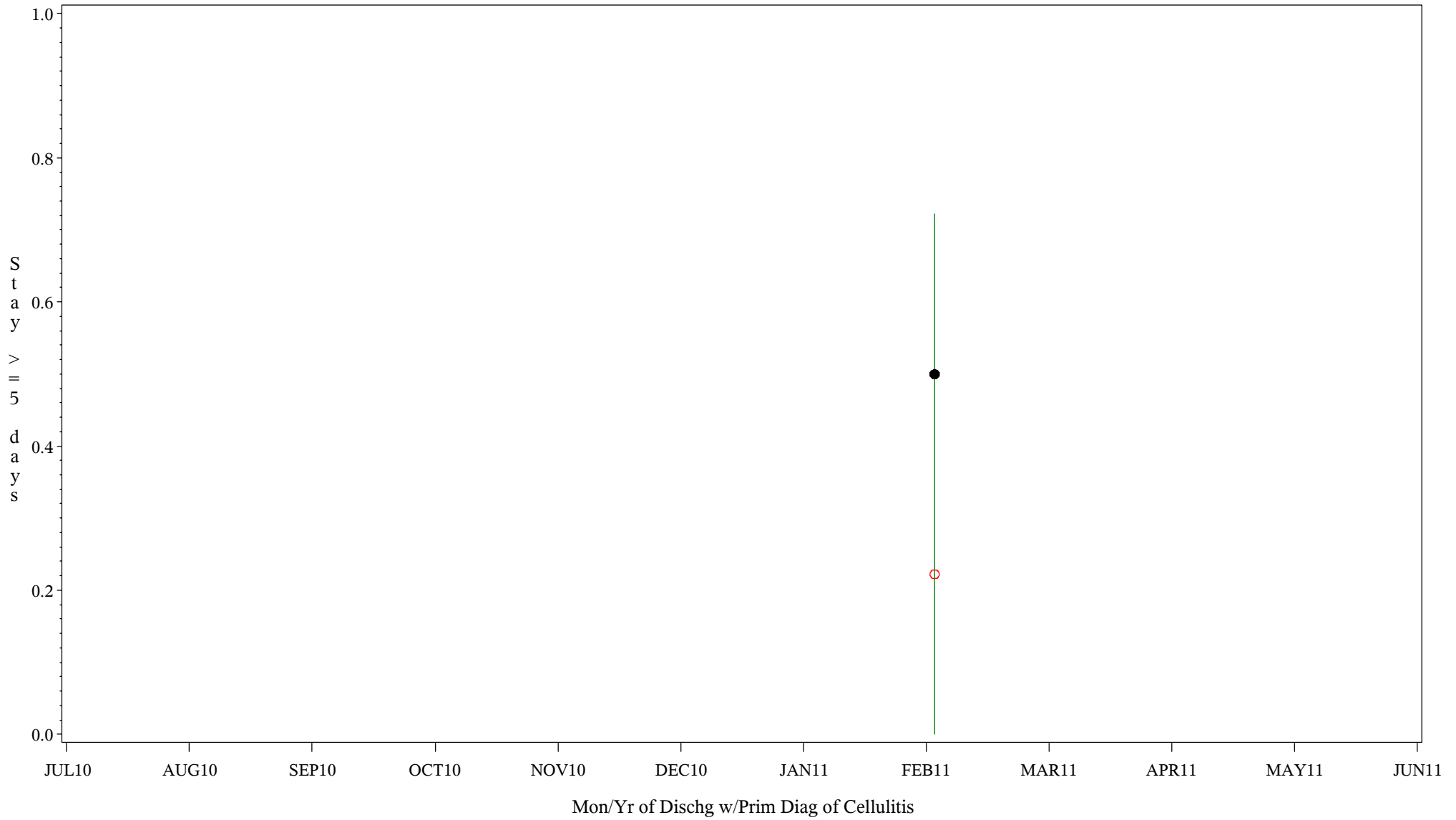
Time Period: July 1, 2010 - June 30, 2011  
 Denom=All Admit w/Prim Diagnosis of Cellulitis, Num=Stay >=5 days  
 Chart created: Monday, 22AUG2011  
 Hospital=Winnebago - Aberdeen



PLOT ● Organization's Observed Rate ○ Expected Rate-Comparison Group

# Comp Chrt for Medical Mgmt of Cellulitis (#5086)

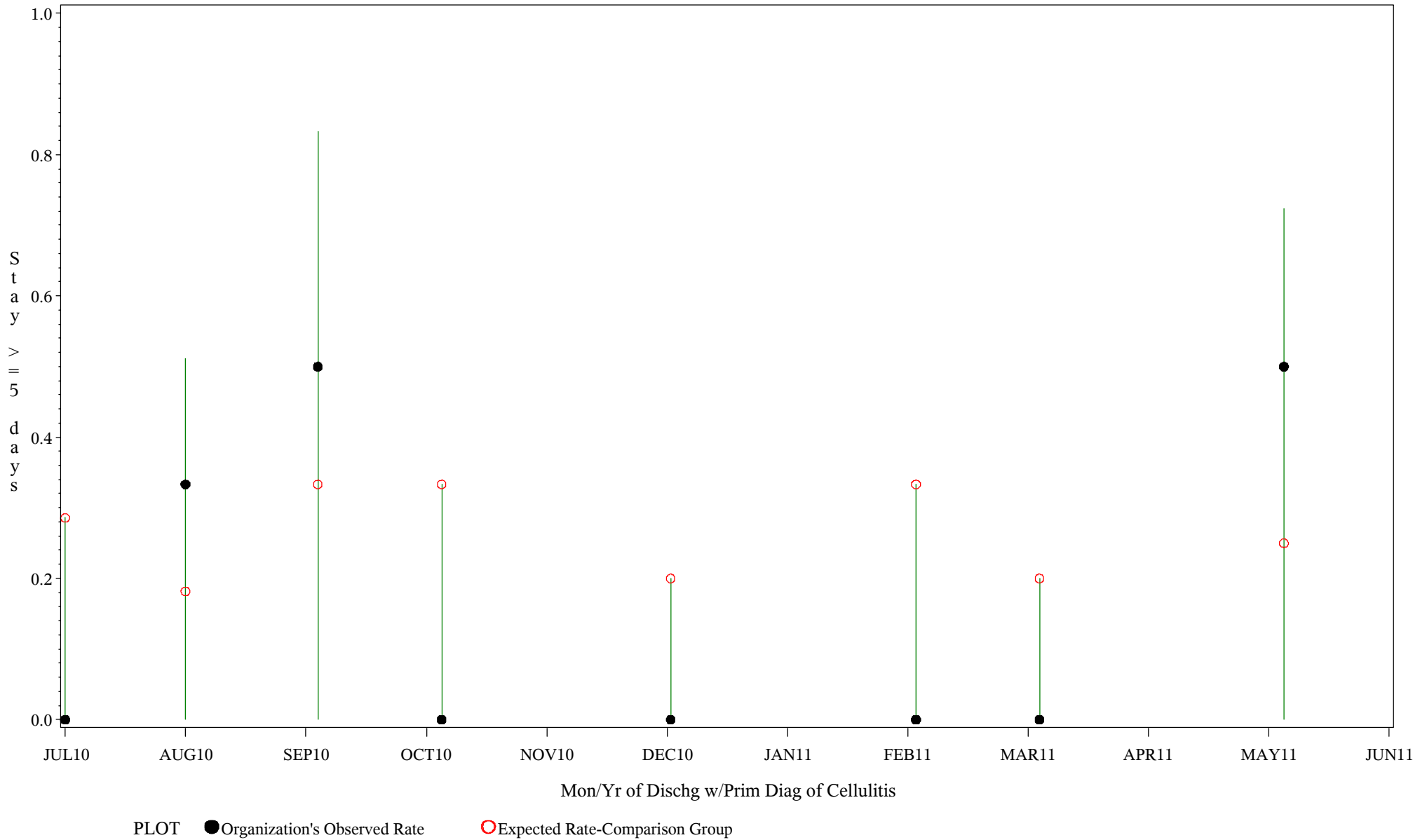
Time Period: July 1, 2010 - June 30, 2011  
Denom=All Admit w/Prim Diagnosis of Cellulitis, Num=Stay >=5 days  
Chart created: Monday, 22AUG2011  
Hospital=Barrow - Alaska



PLOT ● Organization's Observed Rate ○ Expected Rate-Comparison Group

# Comp Chrt for Medical Mgmt of Cellulitis (#5086)

Time Period: July 1, 2010 - June 30, 2011  
 Denom=All Admit w/Prim Diagnosis of Cellulitis, Num=Stay >=5 days  
 Chart created: Monday, 22AUG2011  
 Hospital=YK Health - Alaska



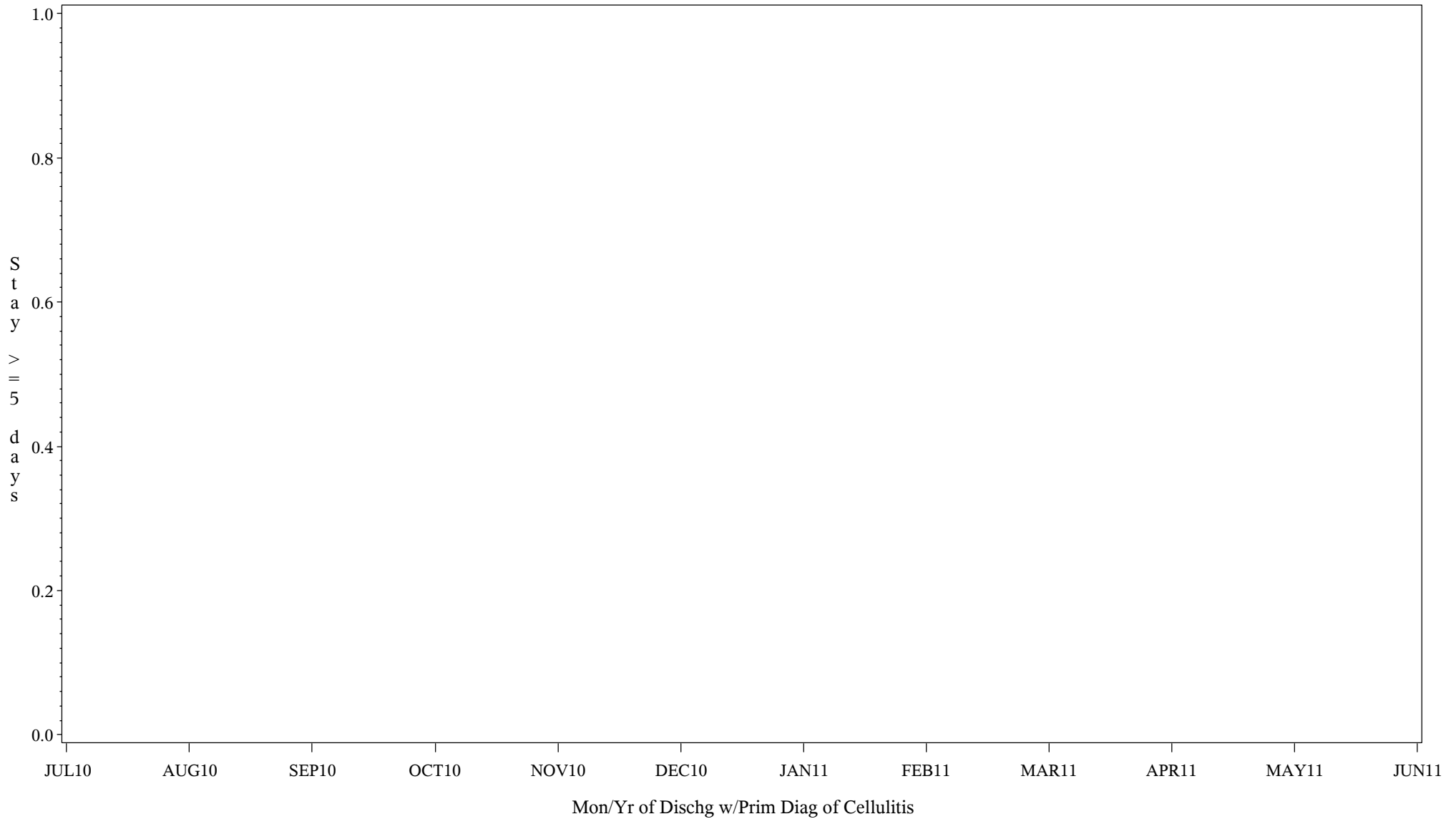
# Comp Chrt for Medical Mgmt of Cellulitis (#5086)

Time Period: July 1, 2010 - June 30, 2011

Denom=All Admit w/Prim Diagnosis of Cellulitis, Num=Stay >=5 days

Chart created: Monday, 22AUG2011

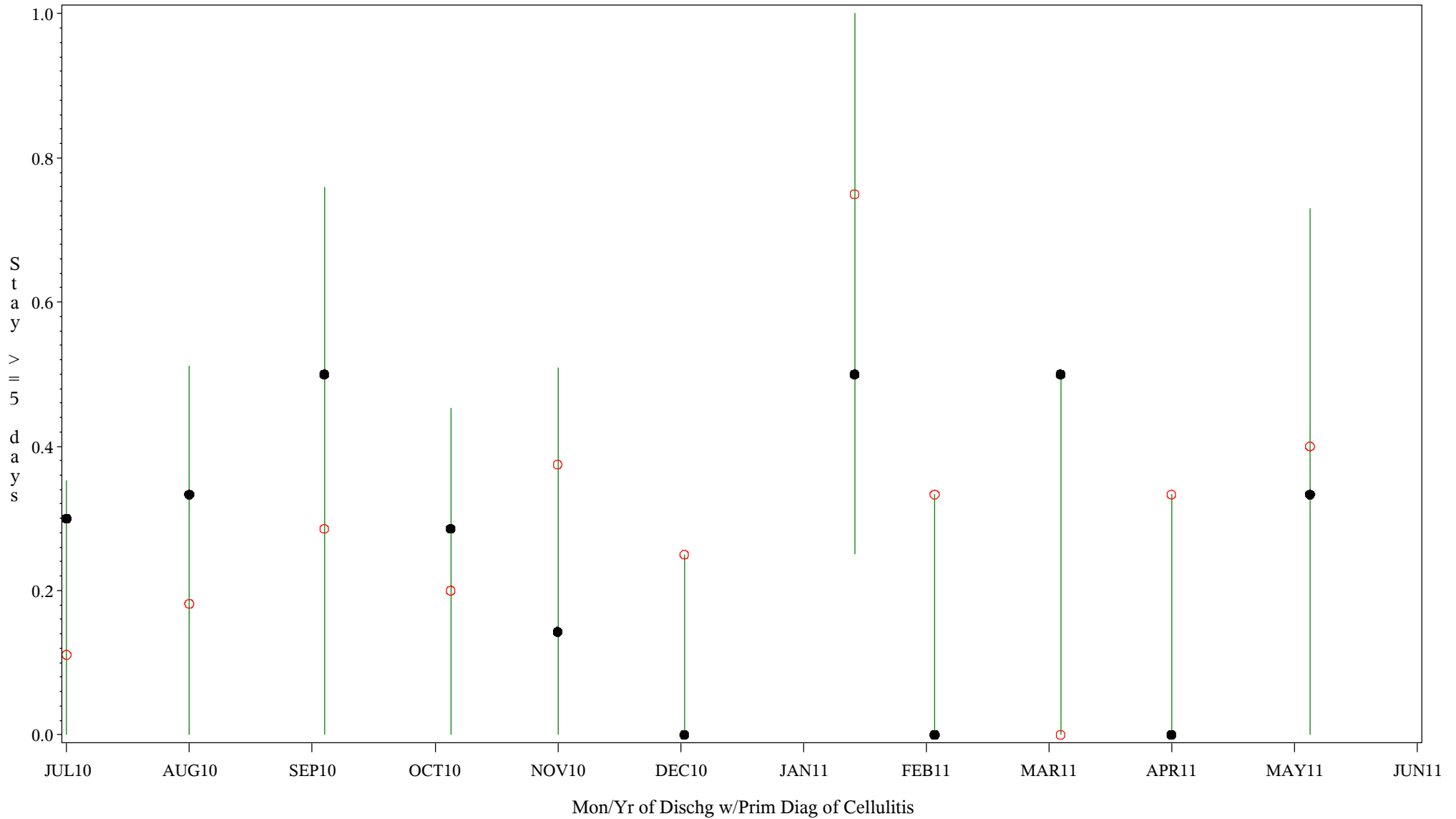
Hospital=Maniilaq - Alaska



PLOT ● Organization's Observed Rate ○ Expected Rate-Comparison Group

# Comp Chrt for Medical Mgmt of Cellulitis (#5086)

Time Period: July 1, 2010 - June 30, 2011  
 Denom=All Admit w/Prim Diagnosis of Cellulitis, Num=Stay >=5 days  
 Chart created: Monday, 22AUG2011  
 Hospital=Shiprock - Navajo



PLOT ● Organization's Observed Rate ○ Expected Rate-Comparison Group