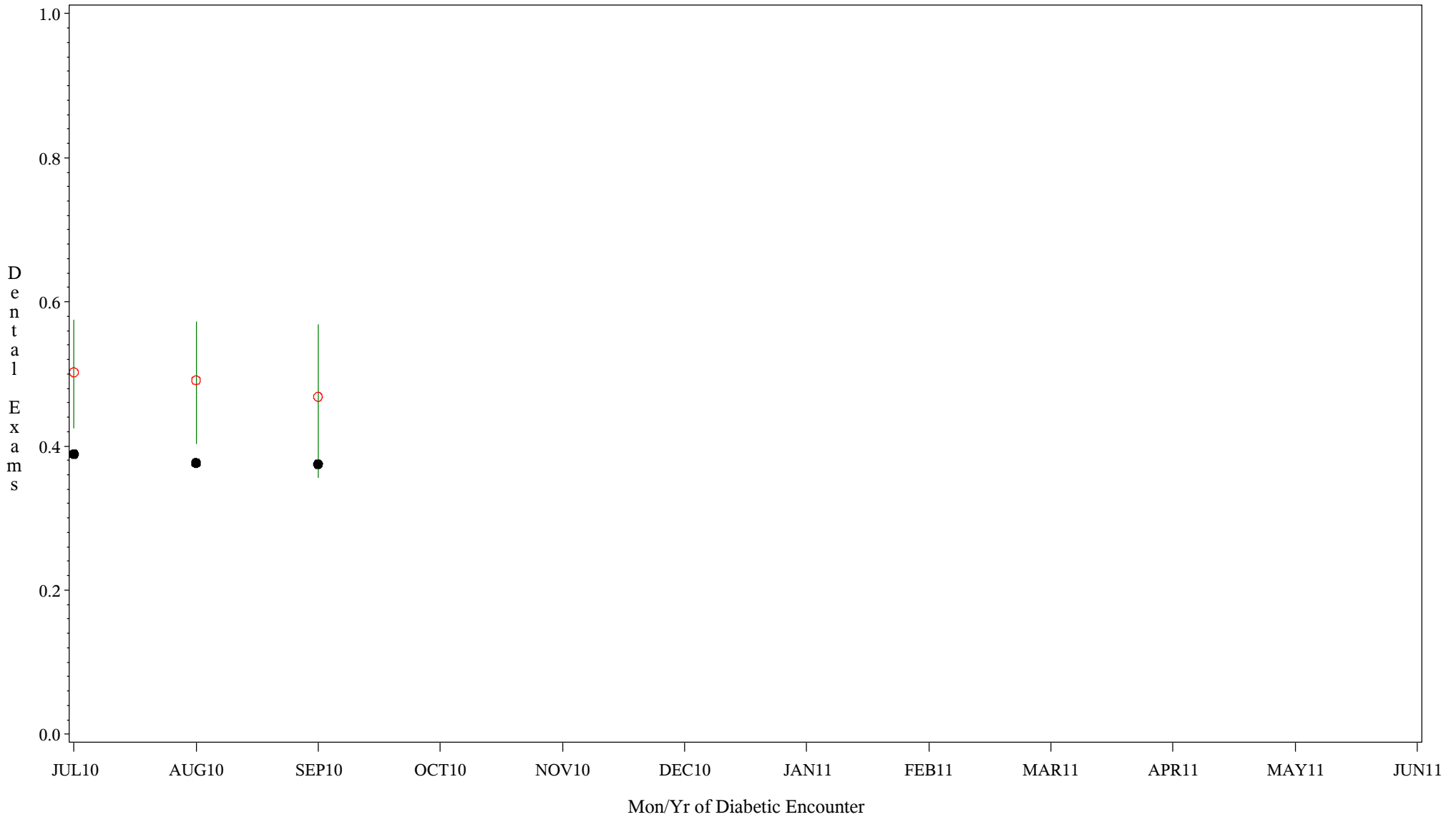


Comparison Chart for Diabetic Dental Health (#5089)

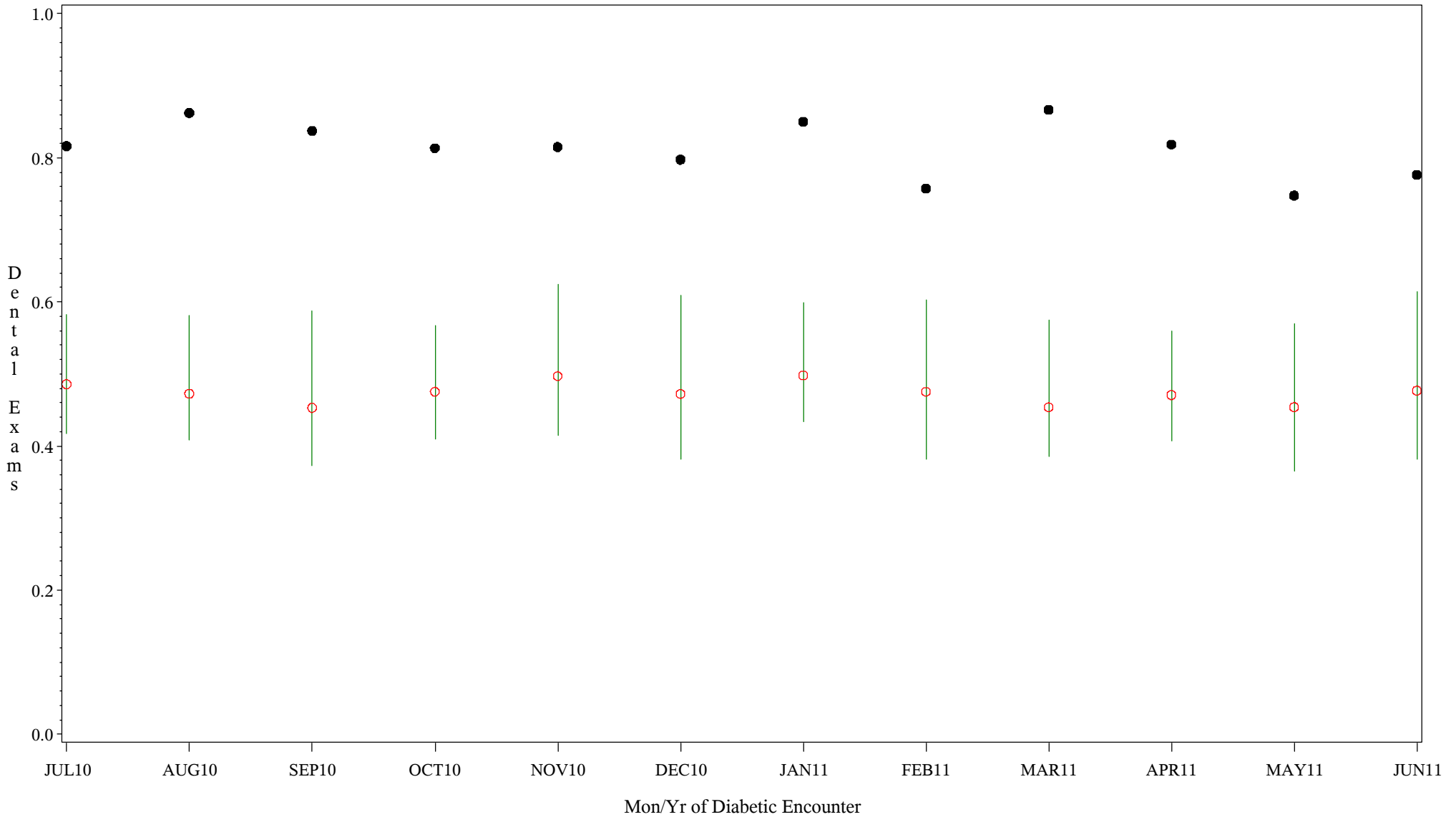
Time Period: July 1, 2010 - June 30, 2011
Denominator=All Diabetic Patients, Numerator=Annual Dental Exam
Chart created: Monday, 22AUG2011
Hospital=Sells - Tucson



PLOT ● Organization's Observed Rate ○ Expected Rate-Comparison Group

Comparison Chart for Diabetic Dental Health (#5089)

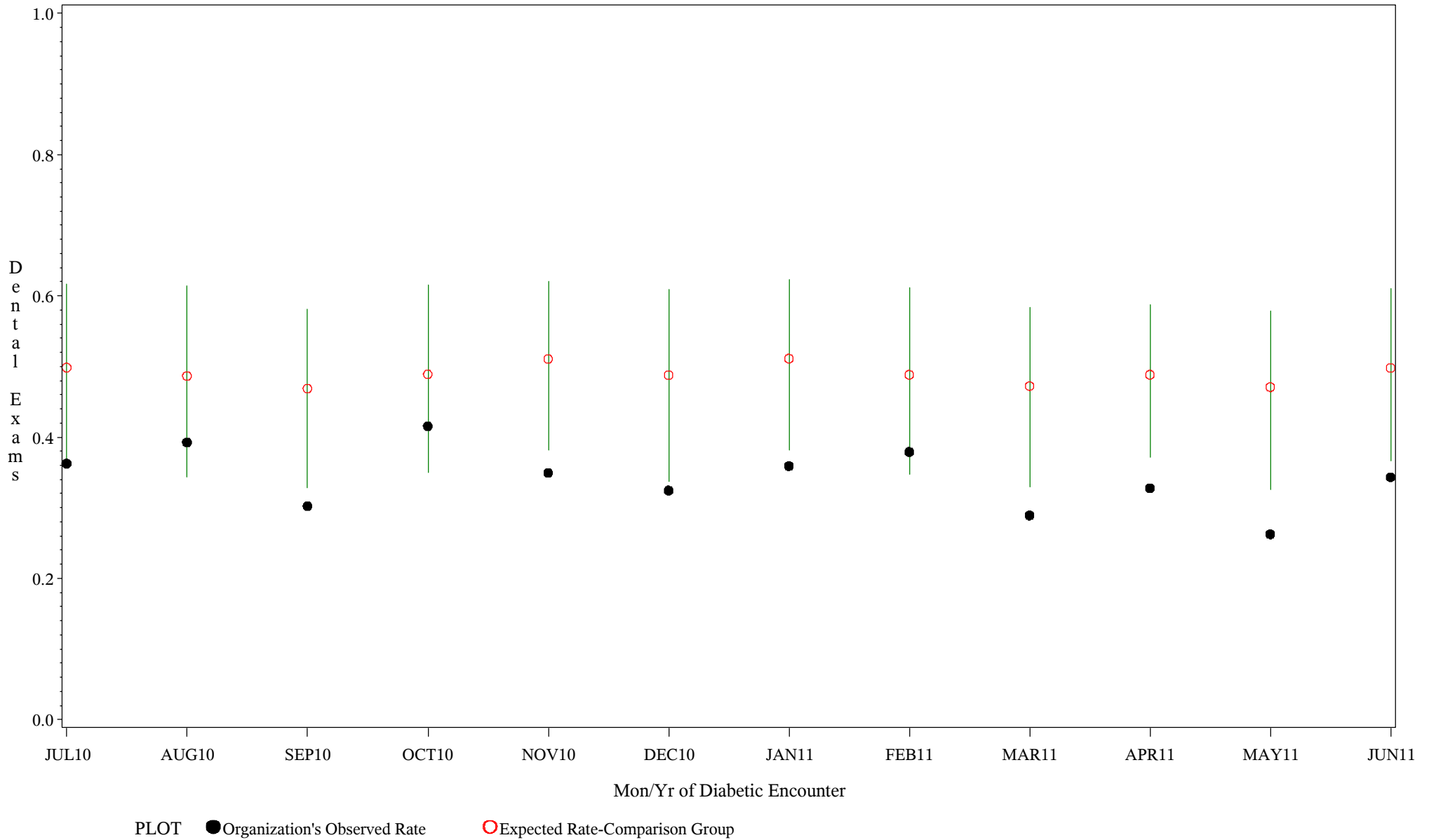
Time Period: July 1, 2010 - June 30, 2011
 Denominator=All Diabetic Patients, Numerator=Annual Dental Exam
 Chart created: Monday, 22AUG2011
 Hospital=Mescalero - Albuquerque



PLOT ● Organization's Observed Rate ○ Expected Rate-Comparison Group

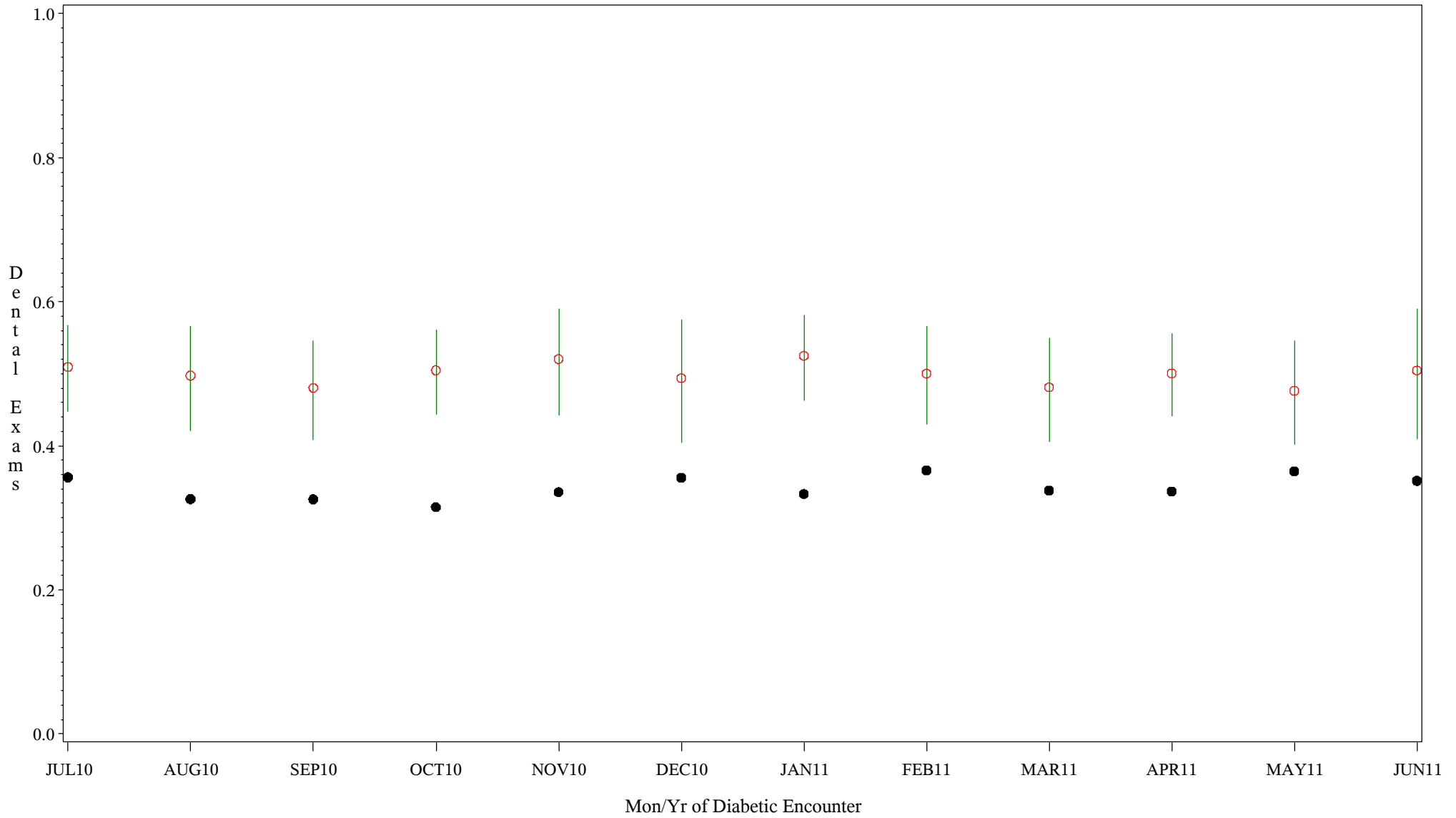
Comparison Chart for Diabetic Dental Health (#5089)

Time Period: July 1, 2010 - June 30, 2011
 Denominator=All Diabetic Patients, Numerator=Annual Dental Exam
 Chart created: Monday, 22AUG2011
 Hospital=Santa Fe - Albuquerque



Comparison Chart for Diabetic Dental Health (#5089)

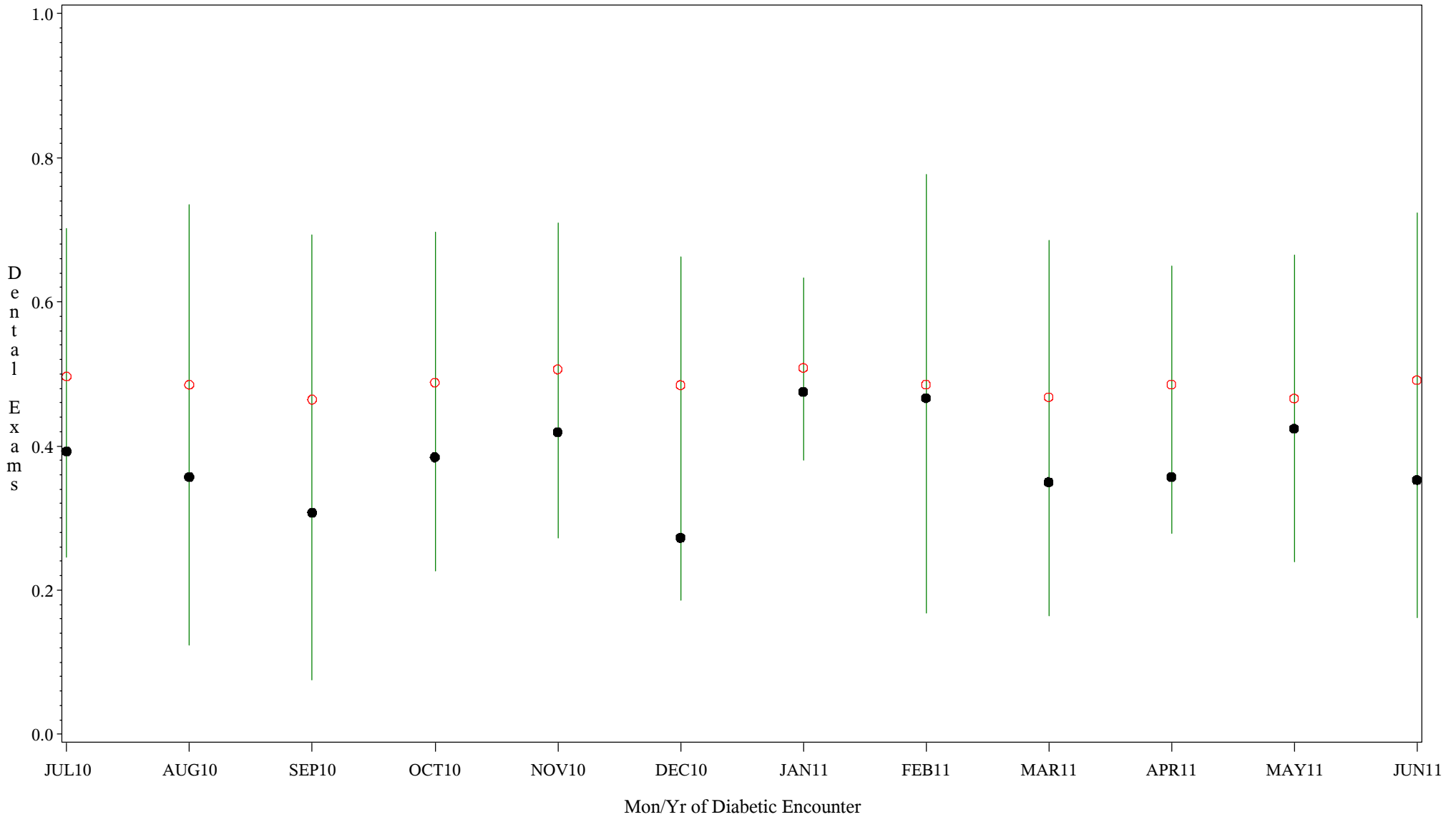
Time Period: July 1, 2010 - June 30, 2011
 Denominator=All Diabetic Patients, Numerator=Annual Dental Exam
 Chart created: Monday, 22AUG2011
 Hospital=Zuni - Albuquerque



PLOT ● Organization's Observed Rate ○ Expected Rate-Comparison Group

Comparison Chart for Diabetic Dental Health (#5089)

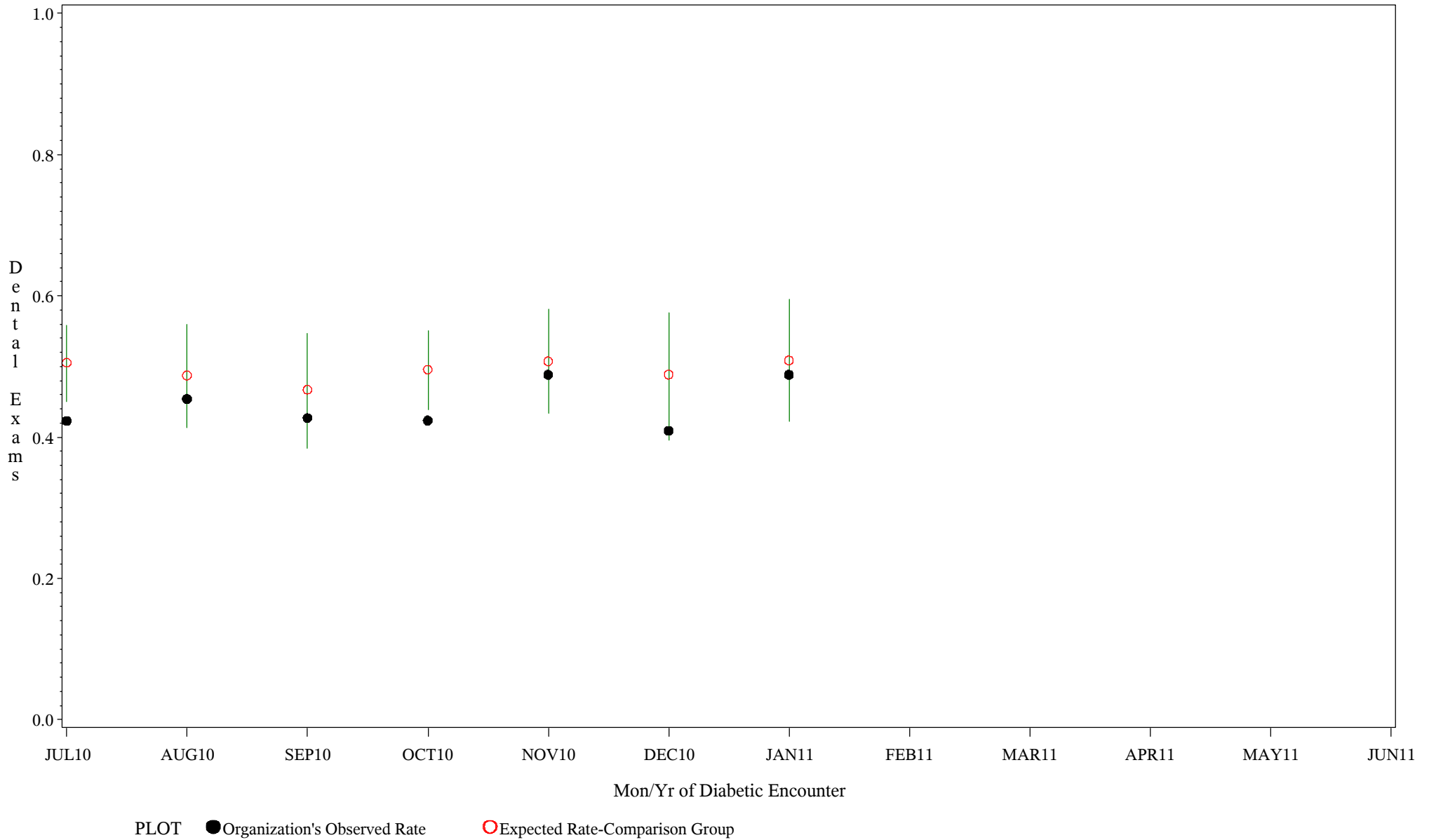
Time Period: July 1, 2010 - June 30, 2011
 Denominator=All Diabetic Patients, Numerator=Annual Dental Exam
 Chart created: Monday, 22AUG2011
 Hospital=Barrow - Alaska



PLOT ● Organization's Observed Rate ○ Expected Rate-Comparison Group

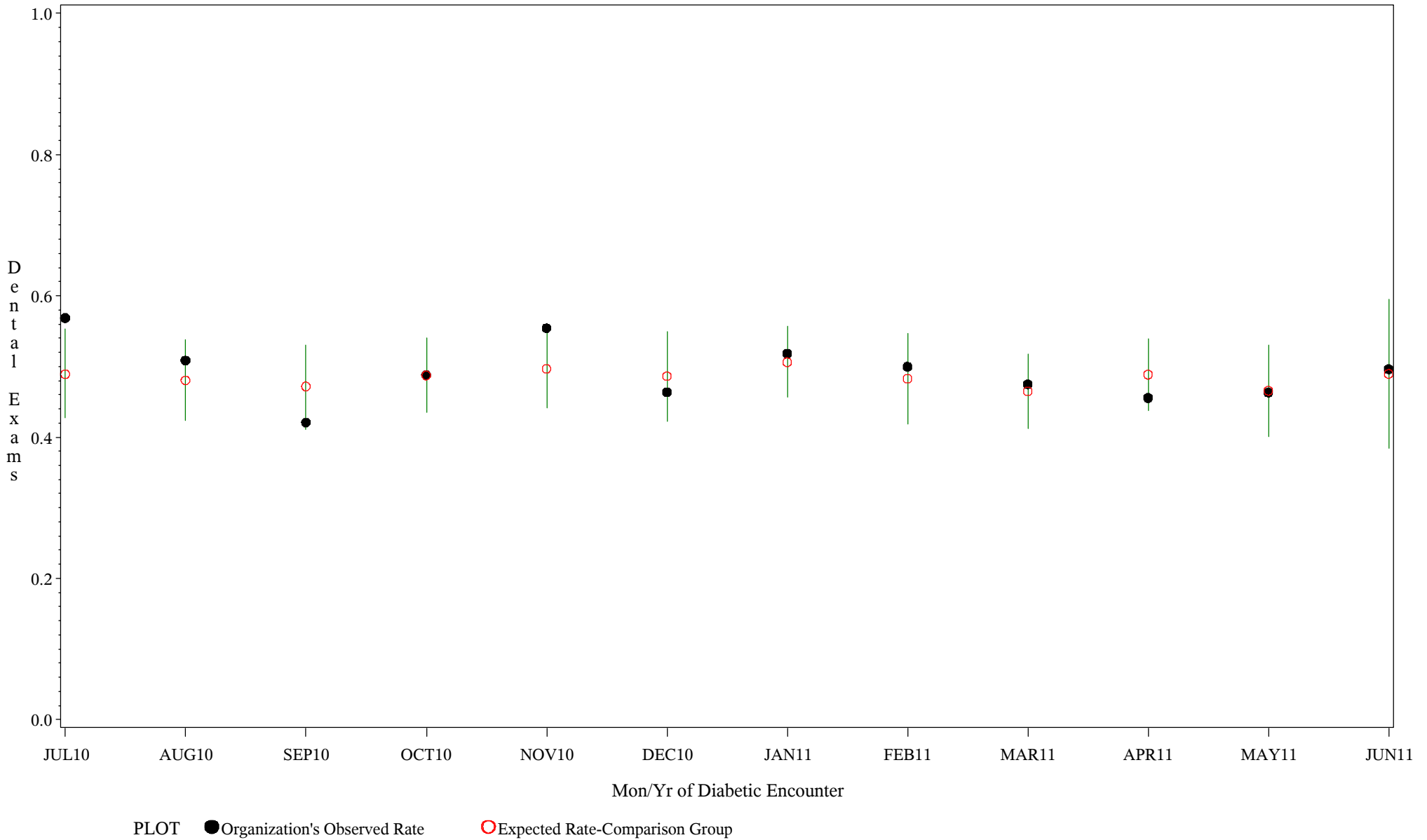
Comparison Chart for Diabetic Dental Health (#5089)

Time Period: July 1, 2010 - June 30, 2011
 Denominator=All Diabetic Patients, Numerator=Annual Dental Exam
 Chart created: Monday, 22AUG2011
 Hospital=Lawton - Oklahoma



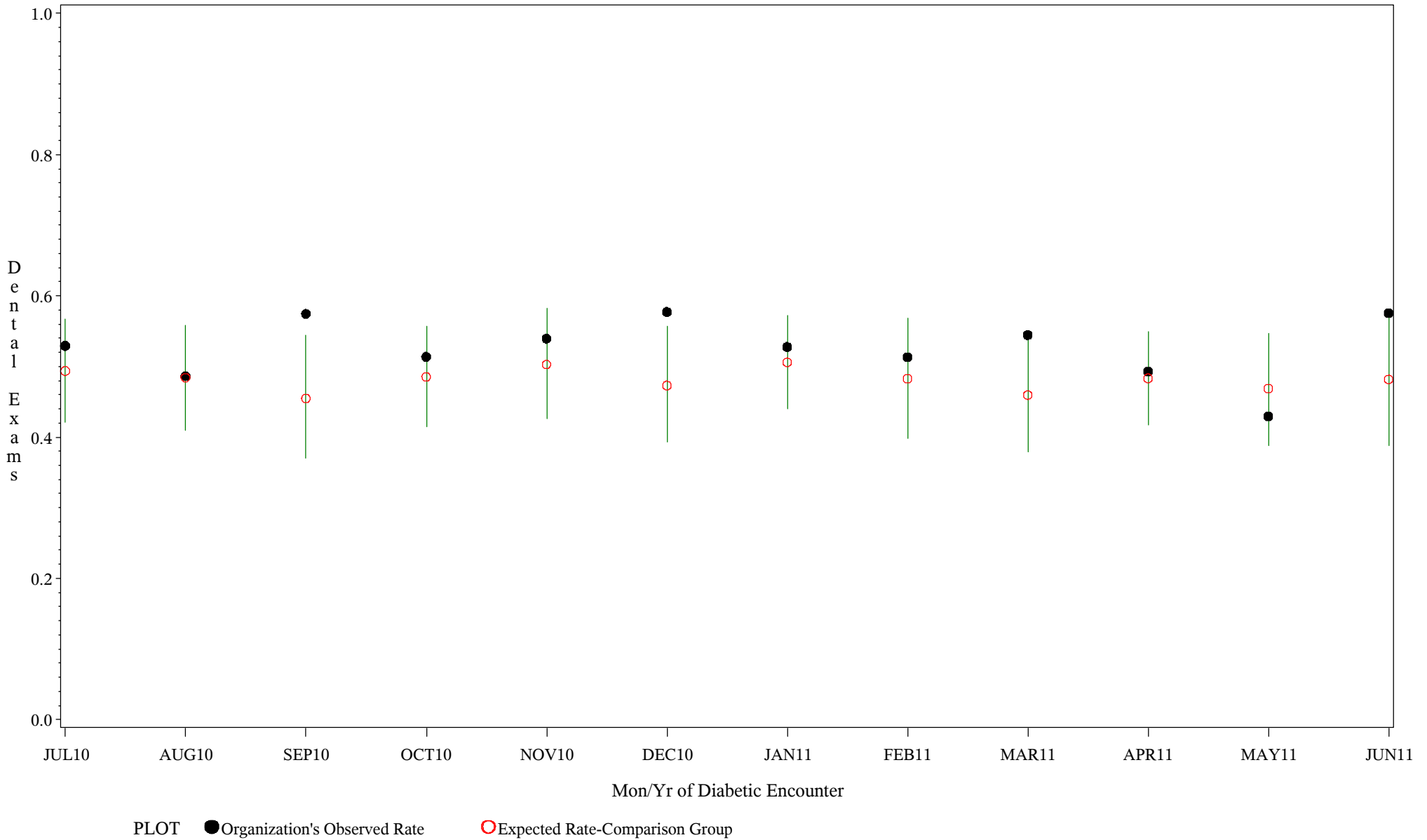
Comparison Chart for Diabetic Dental Health (#5089)

Time Period: July 1, 2010 - June 30, 2011
 Denominator=All Diabetic Patients, Numerator=Annual Dental Exam
 Chart created: Monday, 22AUG2011
 Hospital=Chickasaw Hospital - Oklahoma



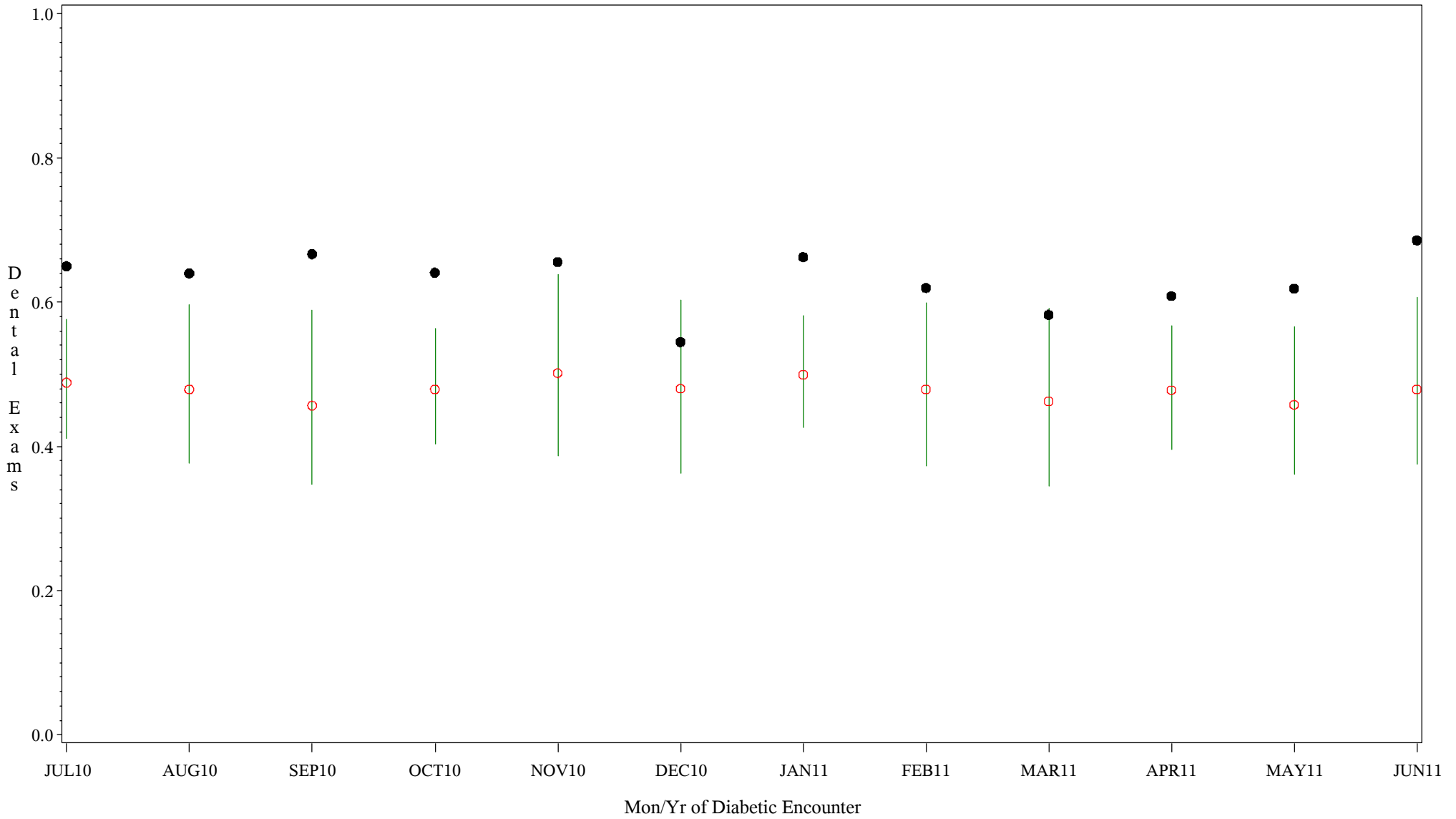
Comparison Chart for Diabetic Dental Health (#5089)

Time Period: July 1, 2010 - June 30, 2011
 Denominator=All Diabetic Patients, Numerator=Annual Dental Exam
 Chart created: Monday, 22AUG2011
 Hospital=Choctaw Hosp - Nashville



Comparison Chart for Diabetic Dental Health (#5089)

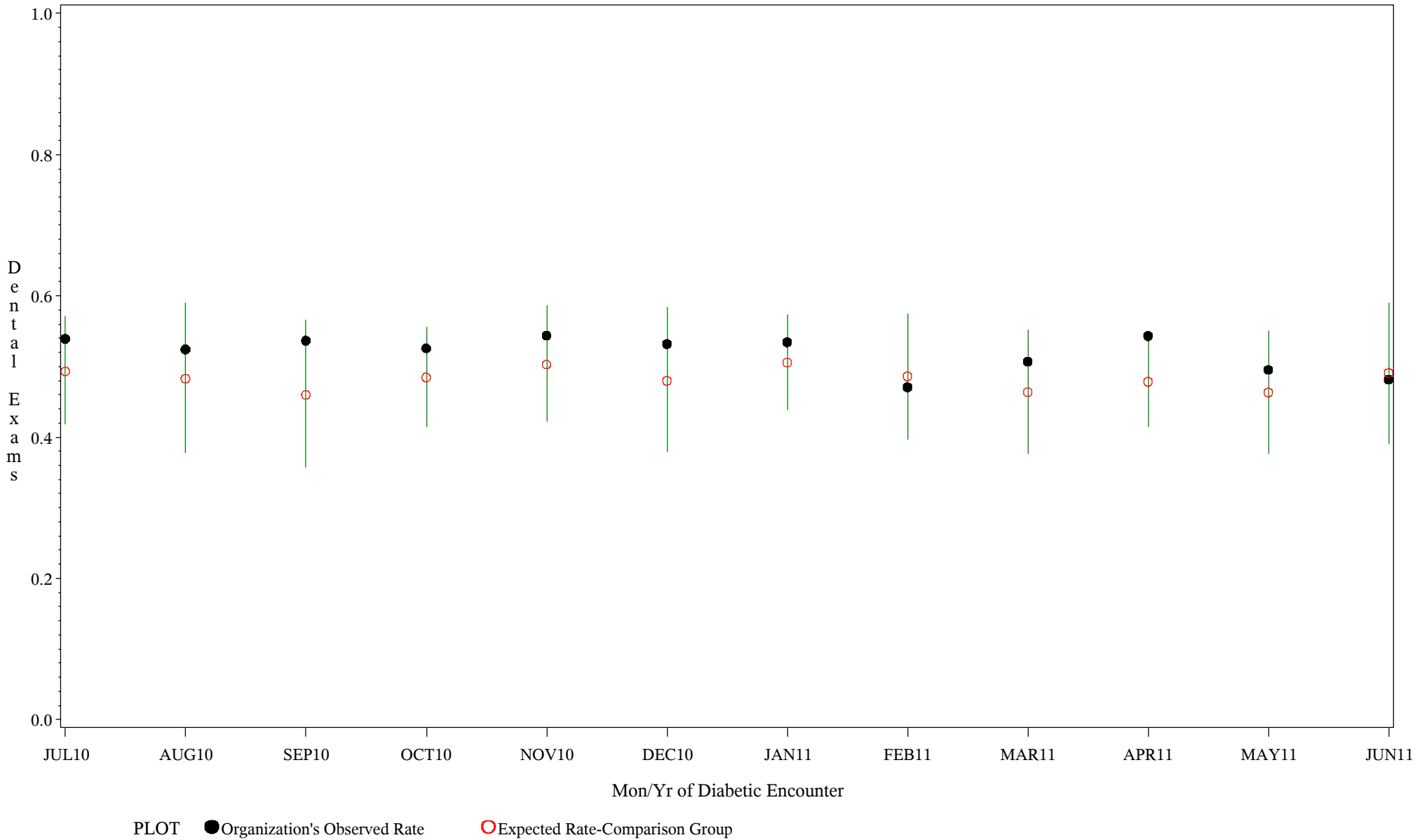
Time Period: July 1, 2010 - June 30, 2011
 Denominator=All Diabetic Patients, Numerator=Annual Dental Exam
 Chart created: Monday, 22AUG2011
 Hospital=Parker - Phoenix



PLOT ● Organization's Observed Rate ○ Expected Rate-Comparison Group

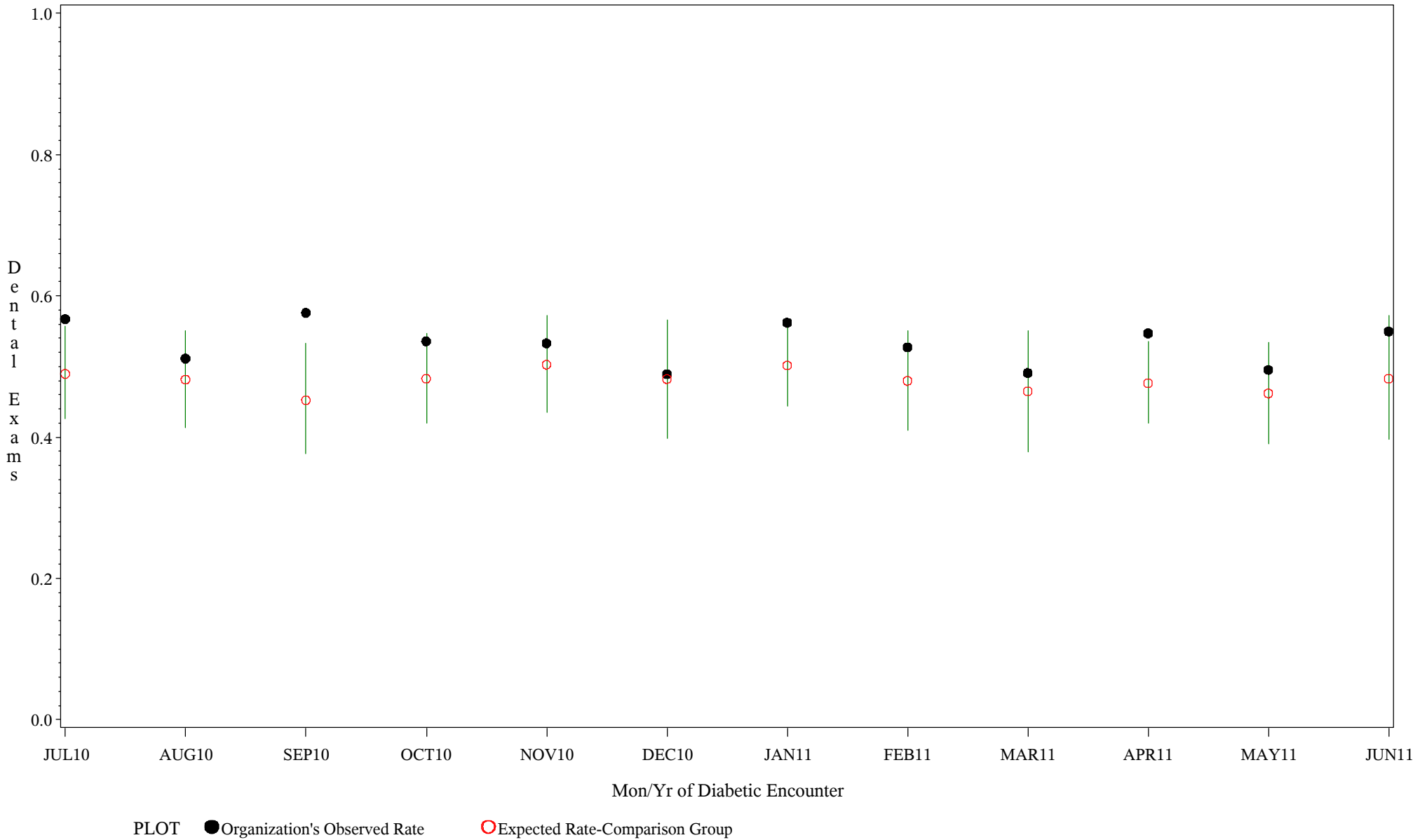
Comparison Chart for Diabetic Dental Health (#5089)

Time Period: July 1, 2010 - June 30, 2011
 Denominator=All Diabetic Patients, Numerator=Annual Dental Exam
 Chart created: Monday, 22AUG2011
 Hospital=San Carlos - Phoenix



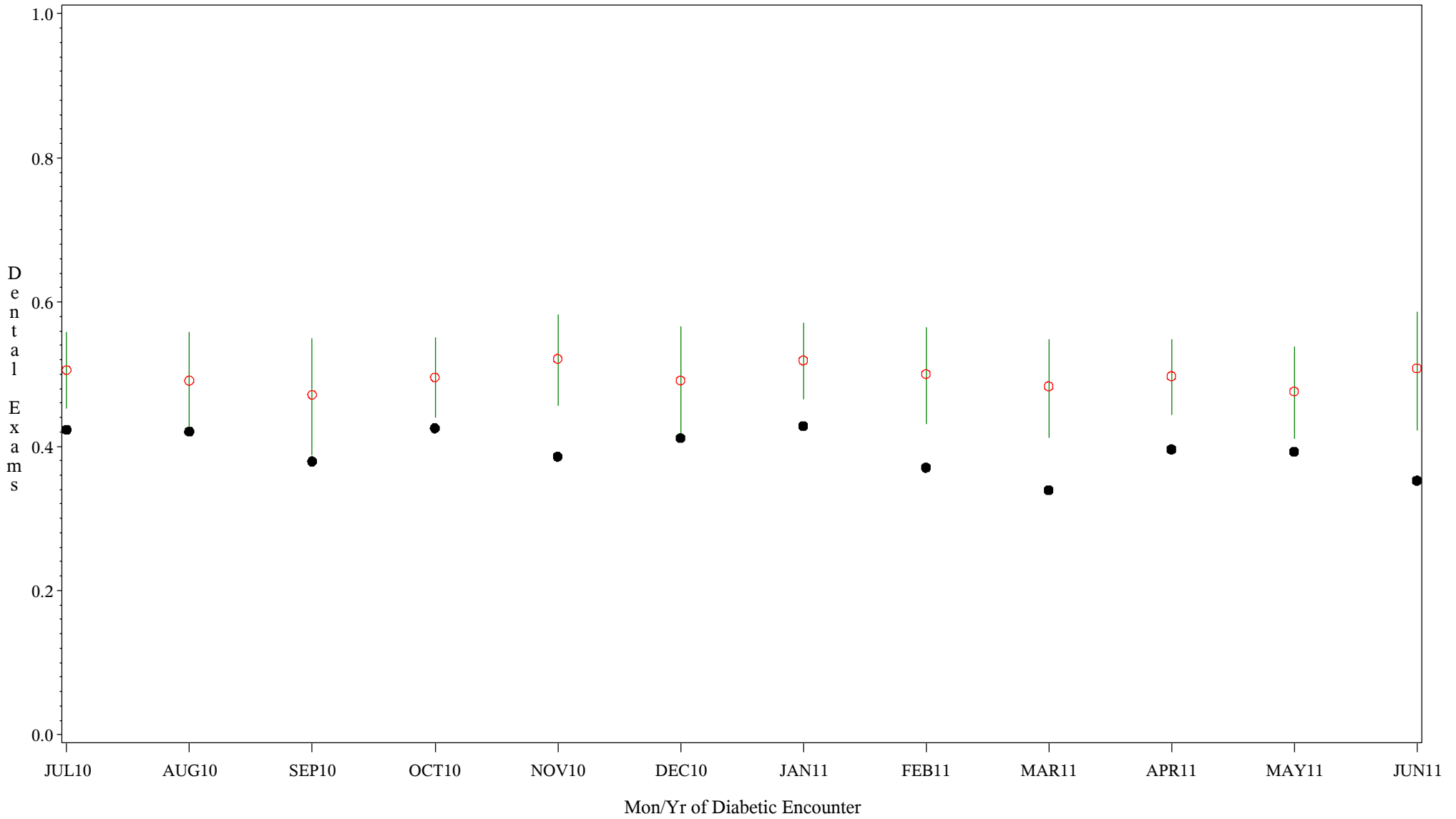
Comparison Chart for Diabetic Dental Health (#5089)

Time Period: July 1, 2010 - June 30, 2011
 Denominator=All Diabetic Patients, Numerator=Annual Dental Exam
 Chart created: Monday, 22AUG2011
 Hospital=White River - Phoenix



Comparison Chart for Diabetic Dental Health (#5089)

Time Period: July 1, 2010 - June 30, 2011
 Denominator=All Diabetic Patients, Numerator=Annual Dental Exam
 Chart created: Monday, 22AUG2011
 Hospital=Chinle - Navajo



PLOT ● Organization's Observed Rate ○ Expected Rate-Comparison Group

Comparison Chart for Diabetic Dental Health (#5089)

Time Period: July 1, 2010 - June 30, 2011
 Denominator=All Diabetic Patients, Numerator=Annual Dental Exam
 Chart created: Monday, 22AUG2011
 Hospital=Shiprock - Navajo

