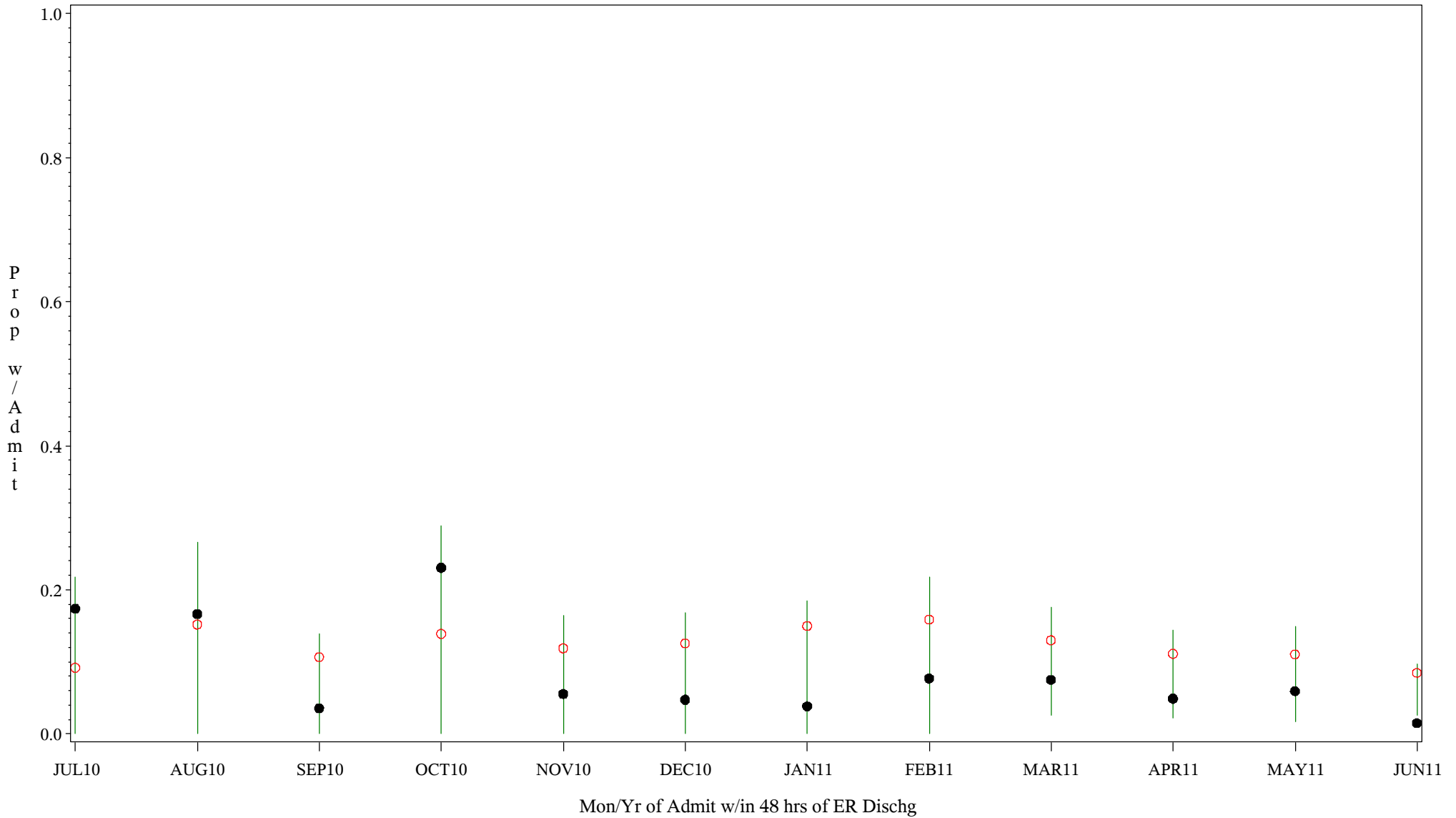


# Comp Chart for Inadeq Treatment in Emerg Patients (#5161)

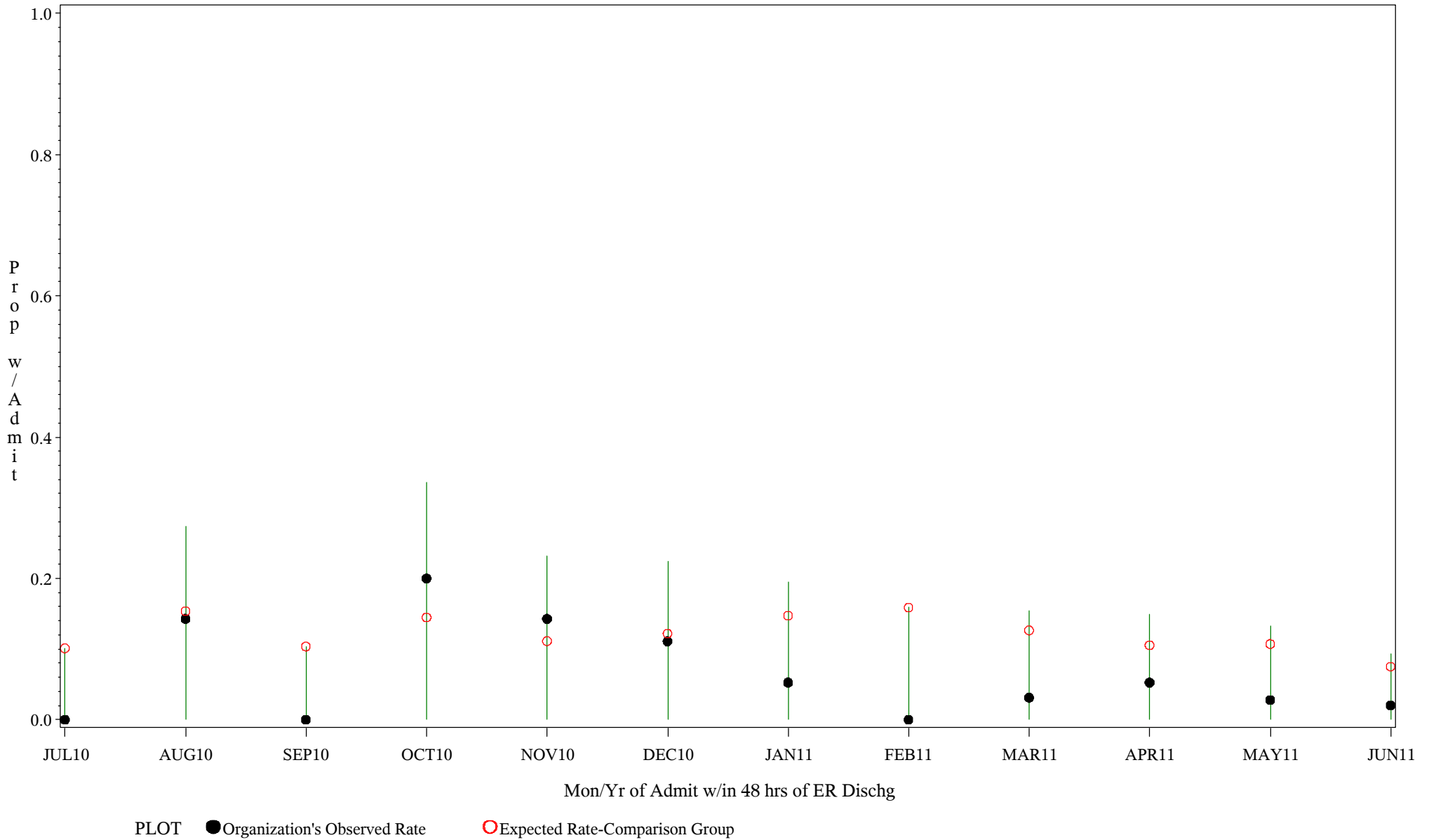
Time Period: July 1, 2010 - June 30, 2011  
 Denom=All ER Admits, Numer=Any Admit w/in 48 hrs of ER Dischg  
 Chart created: Monday, 22AUG2011  
 Hospital=Quentin N Burdick - Aberdeen



PLOT ● Organization's Observed Rate ○ Expected Rate-Comparison Group

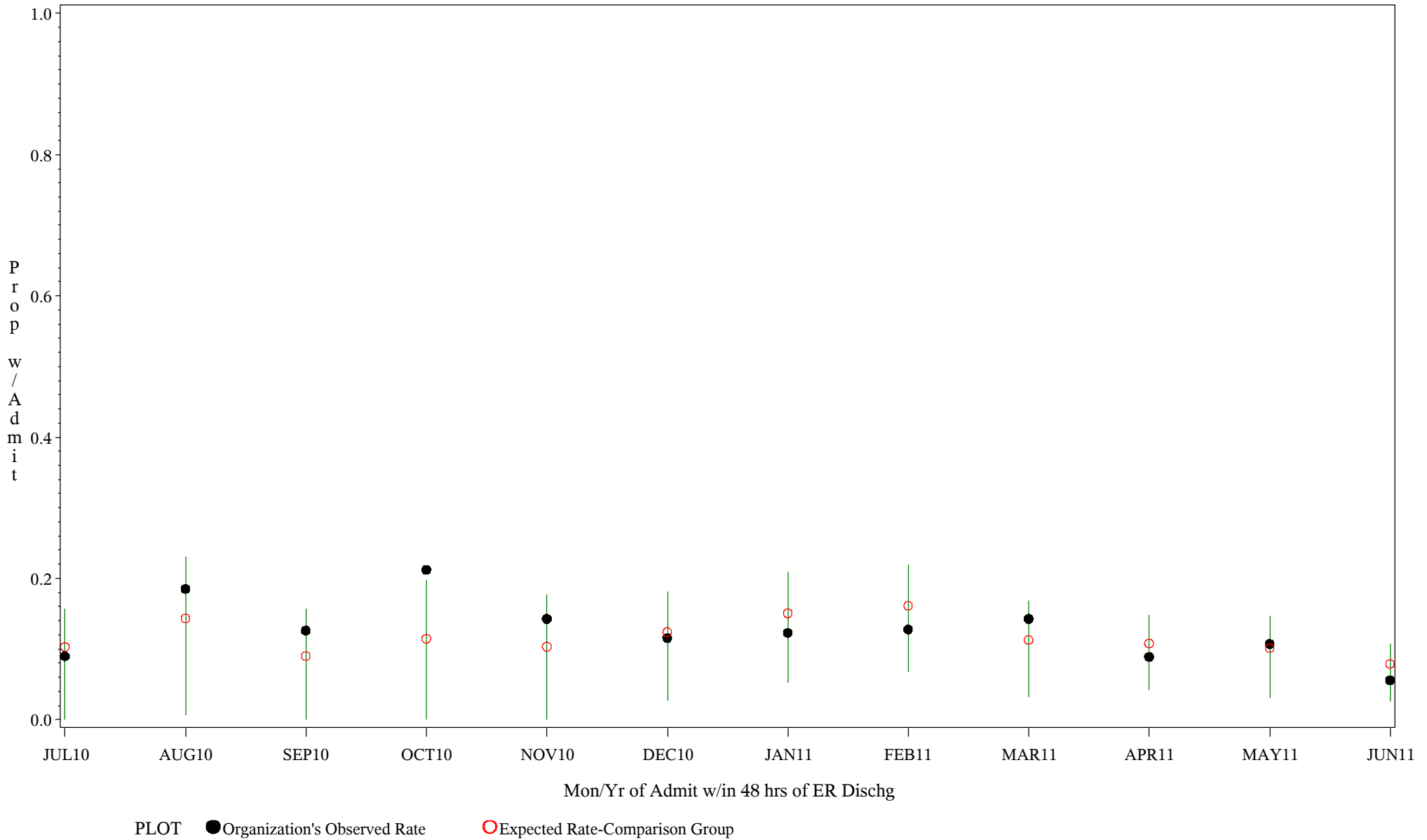
# Comp Chart for Inadeq Treatment in Emerg Patients (#5161)

Time Period: July 1, 2010 - June 30, 2011  
 Denom=All ER Admits, Numer=Any Admit w/in 48 hrs of ER Dischg  
 Chart created: Monday, 22AUG2011  
 Hospital=Winnebago - Aberdeen



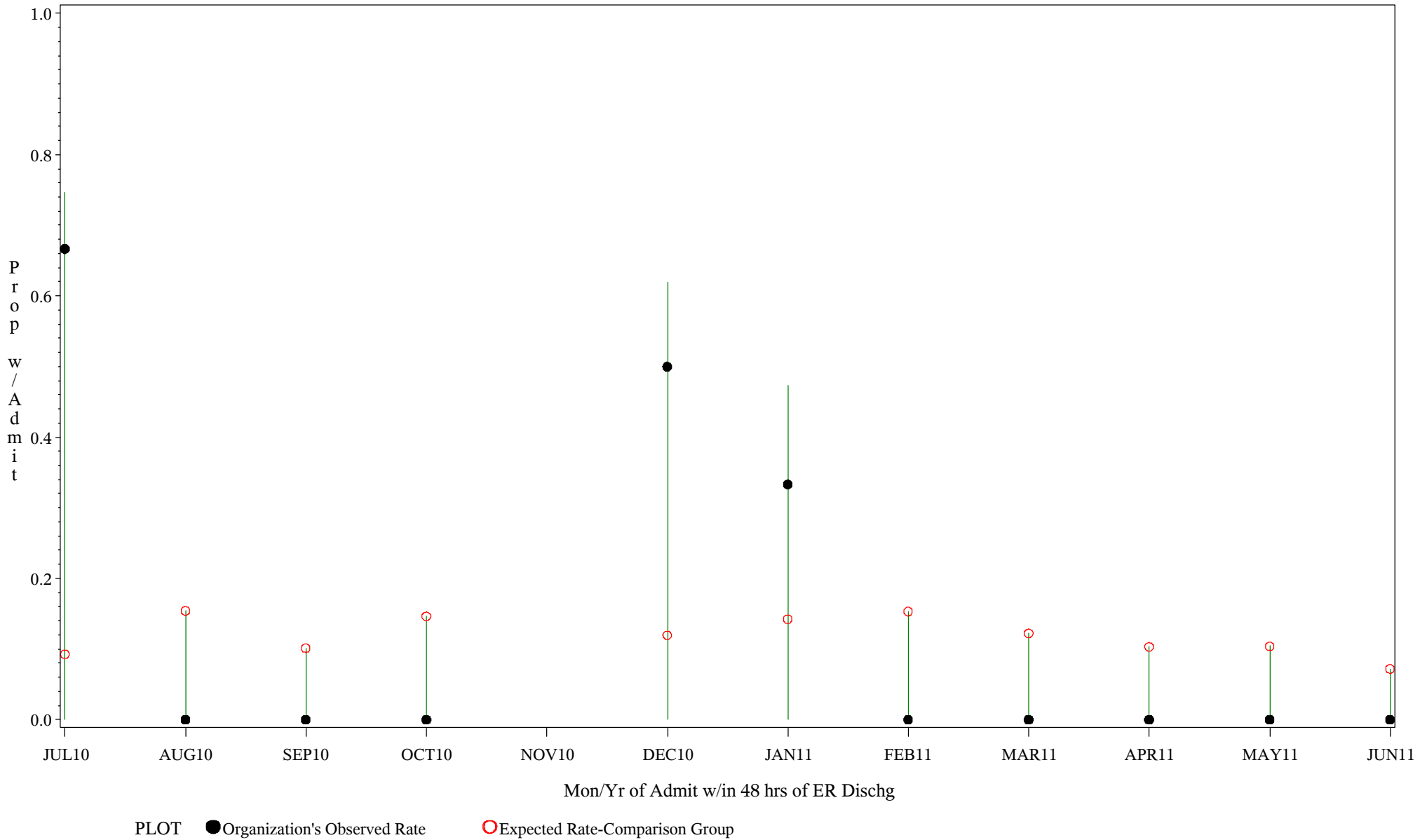
# Comp Chart for Inadeq Treatment in Emerg Patients (#5161)

Time Period: July 1, 2010 - June 30, 2011  
 Denom=All ER Admits, Numer=Any Admit w/in 48 hrs of ER Dischg  
 Chart created: Monday, 22AUG2011  
 Hospital=YK Health - Alaska



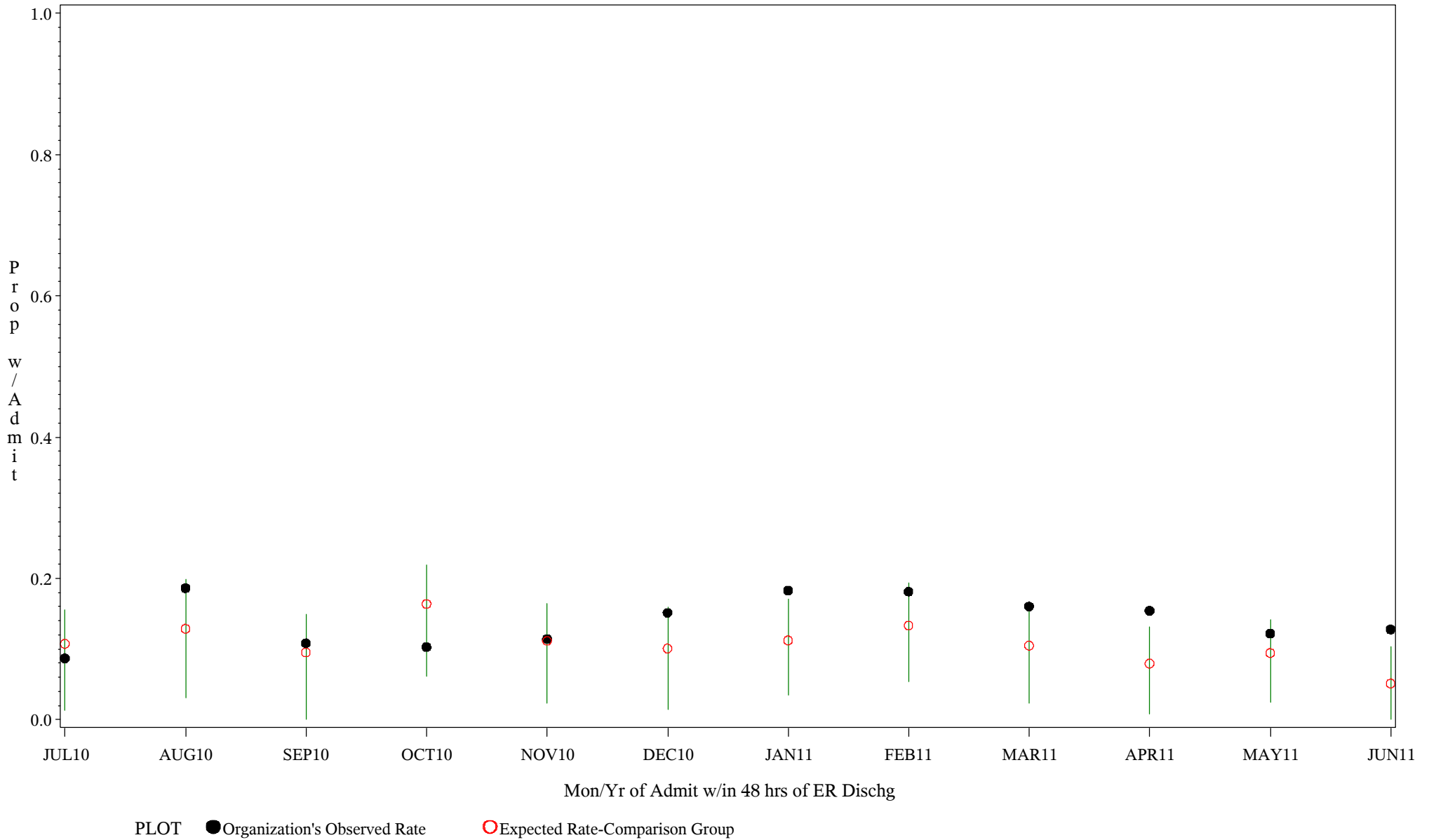
# Comp Chart for Inadeq Treatment in Emerg Patients (#5161)

Time Period: July 1, 2010 - June 30, 2011  
Denom=All ER Admits, Numer=Any Admit w/in 48 hrs of ER Dischg  
Chart created: Monday, 22AUG2011  
Hospital=San Carlos - Phoenix



# Comp Chart for Inadeq Treatment in Emerg Patients (#5161)

Time Period: July 1, 2010 - June 30, 2011  
Denom=All ER Admits, Numer=Any Admit w/in 48 hrs of ER Dischg  
Chart created: Monday, 22AUG2011  
Hospital=GIMC - Navajo



# Comp Chart for Inadeq Treatment in Emerg Patients (#5161)

Time Period: July 1, 2010 - June 30, 2011  
 Denom=All ER Admits, Numer=Any Admit w/in 48 hrs of ER Dischg  
 Chart created: Monday, 22AUG2011  
 Hospital=Shiprock - Navajo

