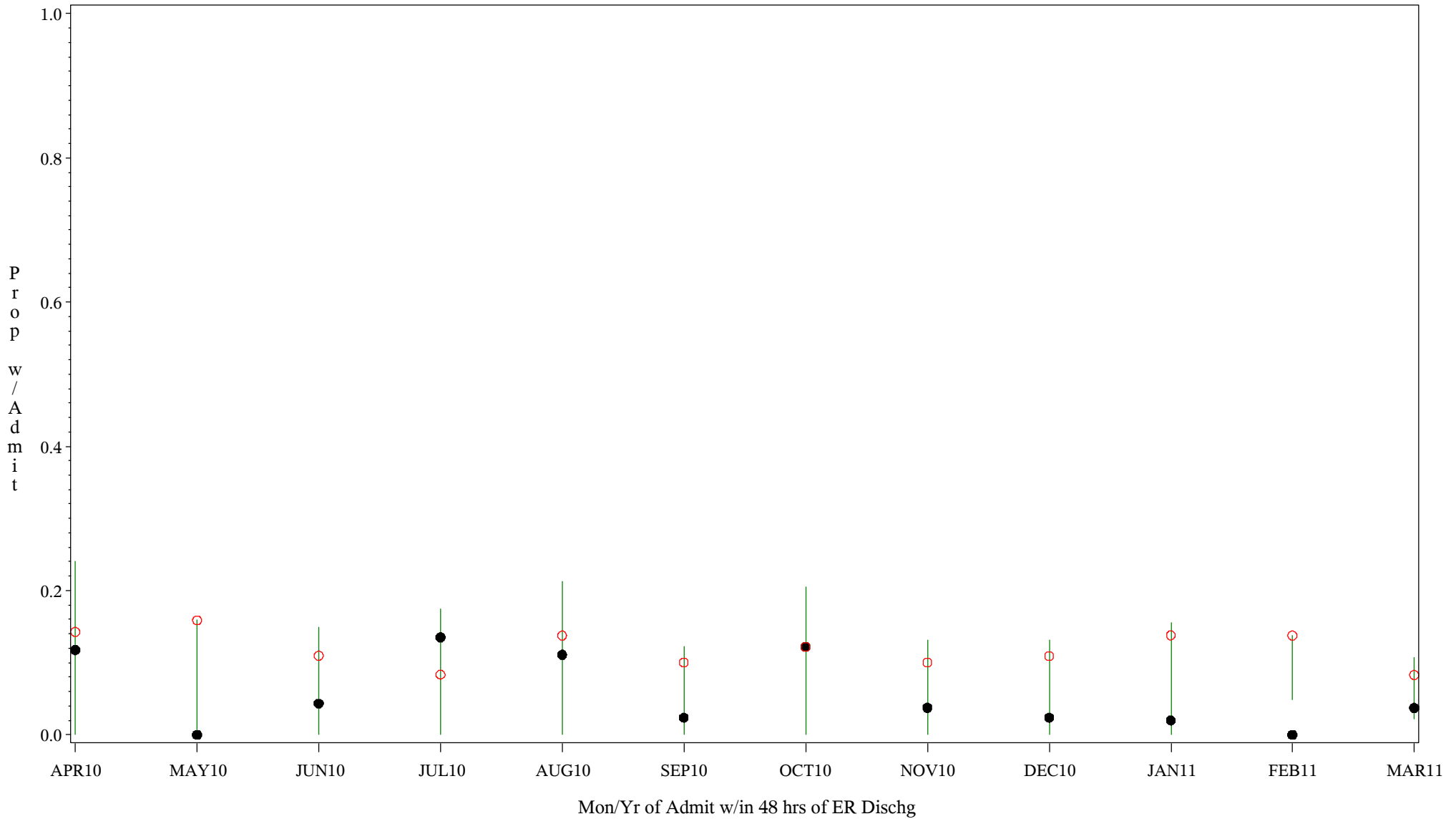


Comp Chart for Inadeq Treatment in Emerg Patients (#5161)

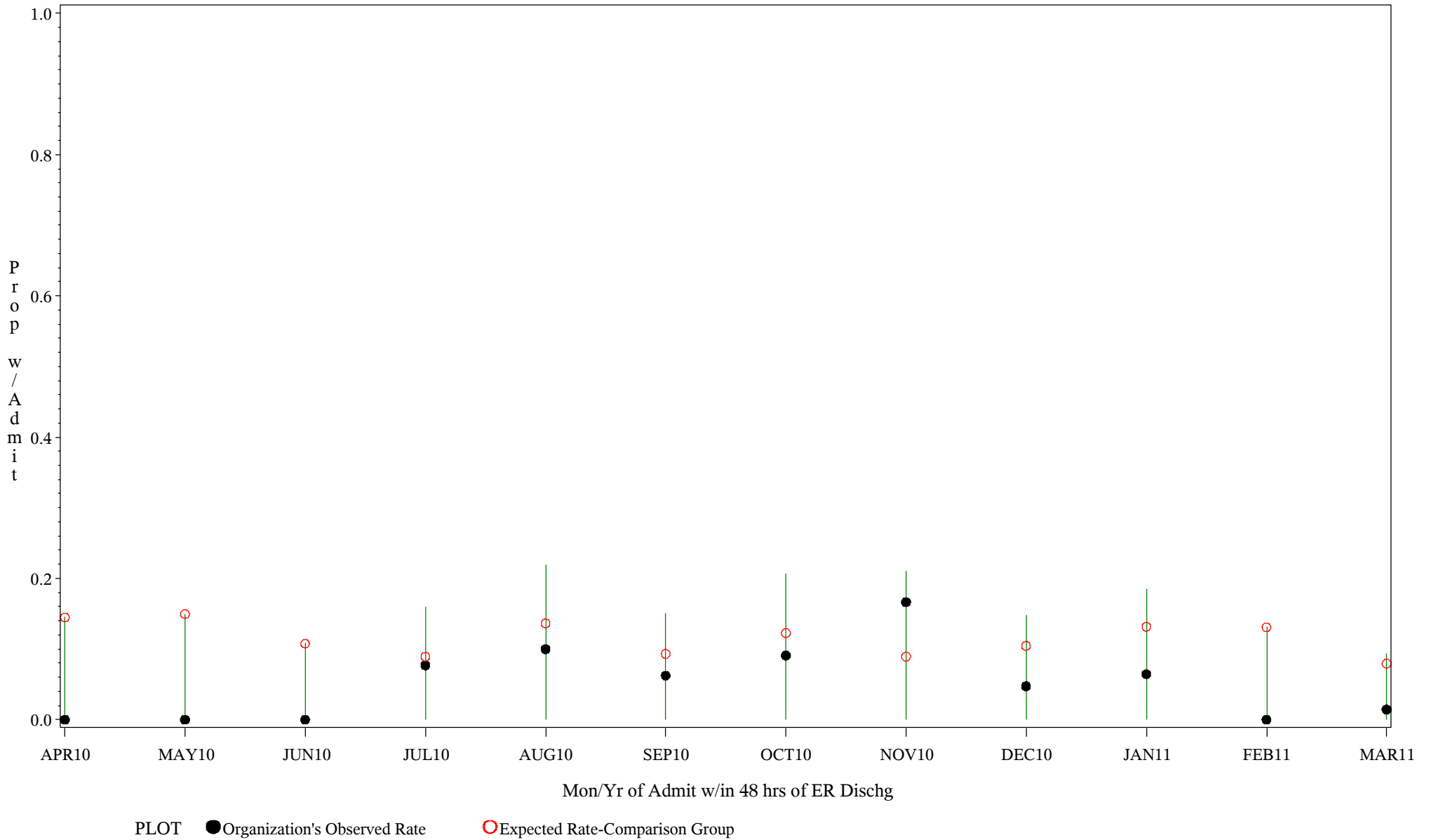
Time Period: April 1, 2010 - March 31, 2011
 Denom=All ER Admits, Numer=Any Admit w/in 48 hrs of ER Dischg
 Chart created: Wednesday, 18MAY2011
 Hospital=Quentin N Burdick - Aberdeen



PLOT ● Organization's Observed Rate ○ Expected Rate-Comparison Group

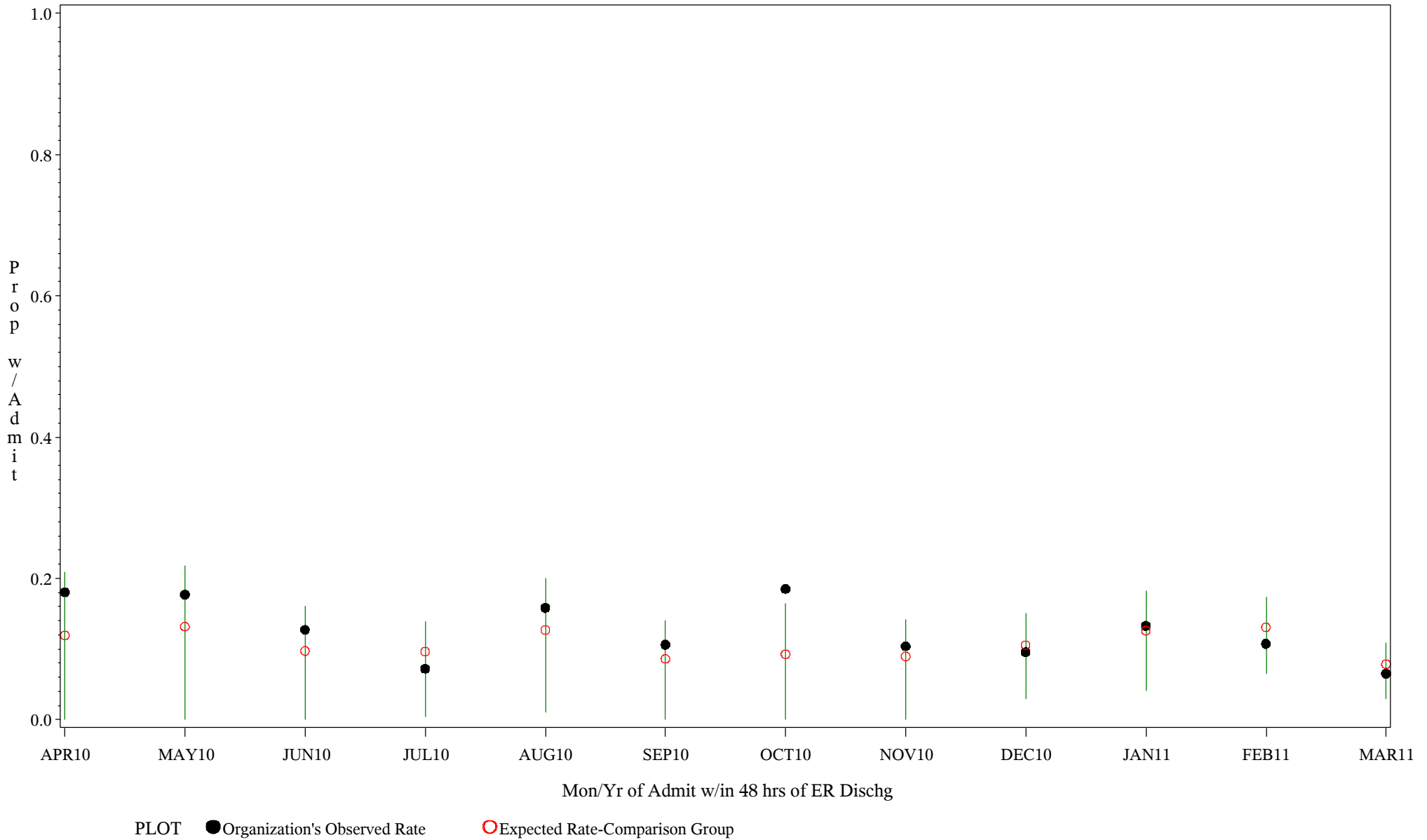
Comp Chart for Inadeq Treatment in Emerg Patients (#5161)

Time Period: April 1, 2010 - March 31, 2011
 Denom=All ER Admits, Numer=Any Admit w/in 48 hrs of ER Dischg
 Chart created: Wednesday, 18MAY2011
 Hospital=Winnebago - Aberdeen



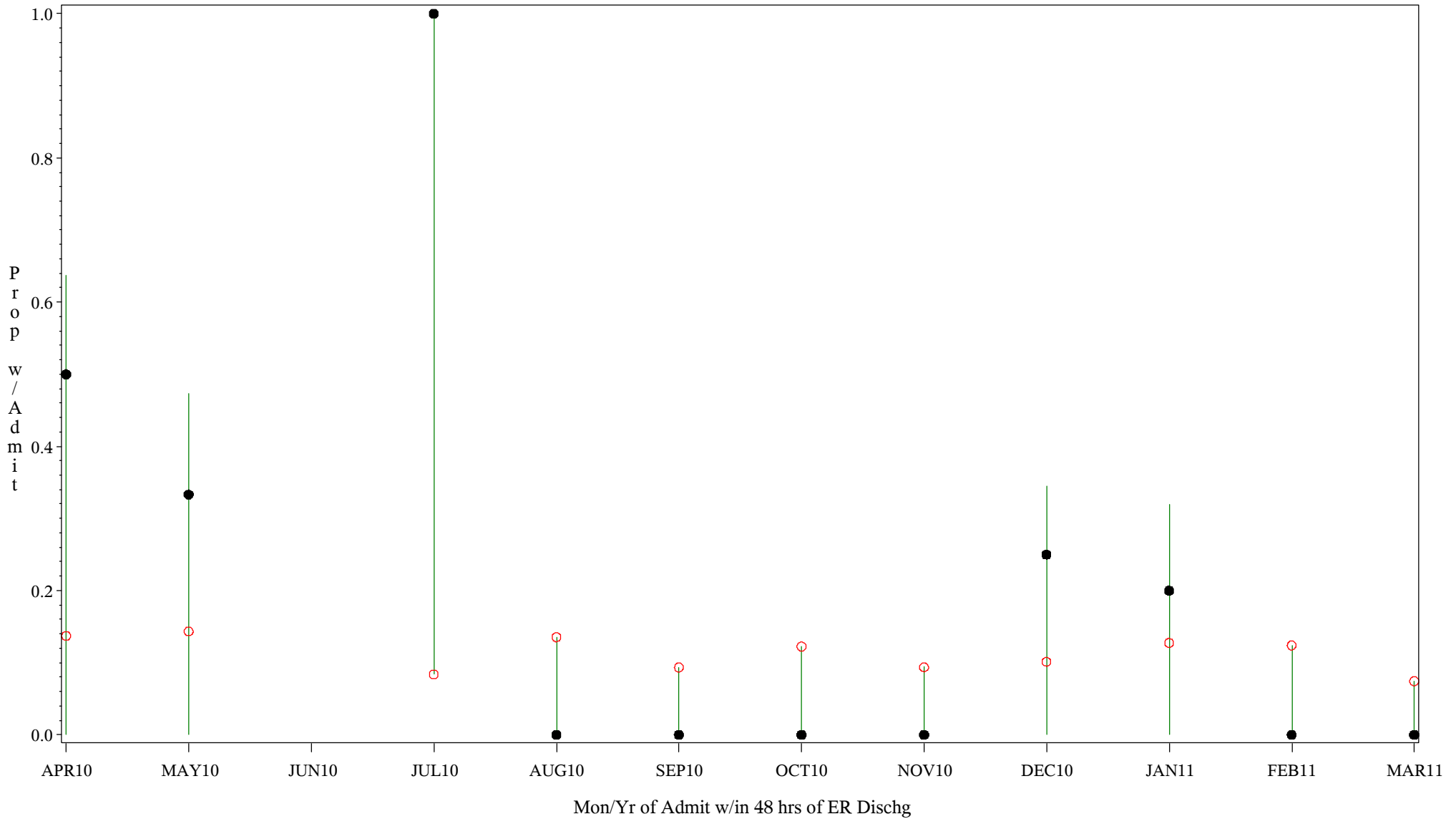
Comp Chart for Inadeq Treatment in Emerg Patients (#5161)

Time Period: April 1, 2010 - March 31, 2011
 Denom=All ER Admits, Numer=Any Admit w/in 48 hrs of ER Dischg
 Chart created: Wednesday, 18MAY2011
 Hospital=YK Health - Alaska



Comp Chart for Inadeq Treatment in Emerg Patients (#5161)

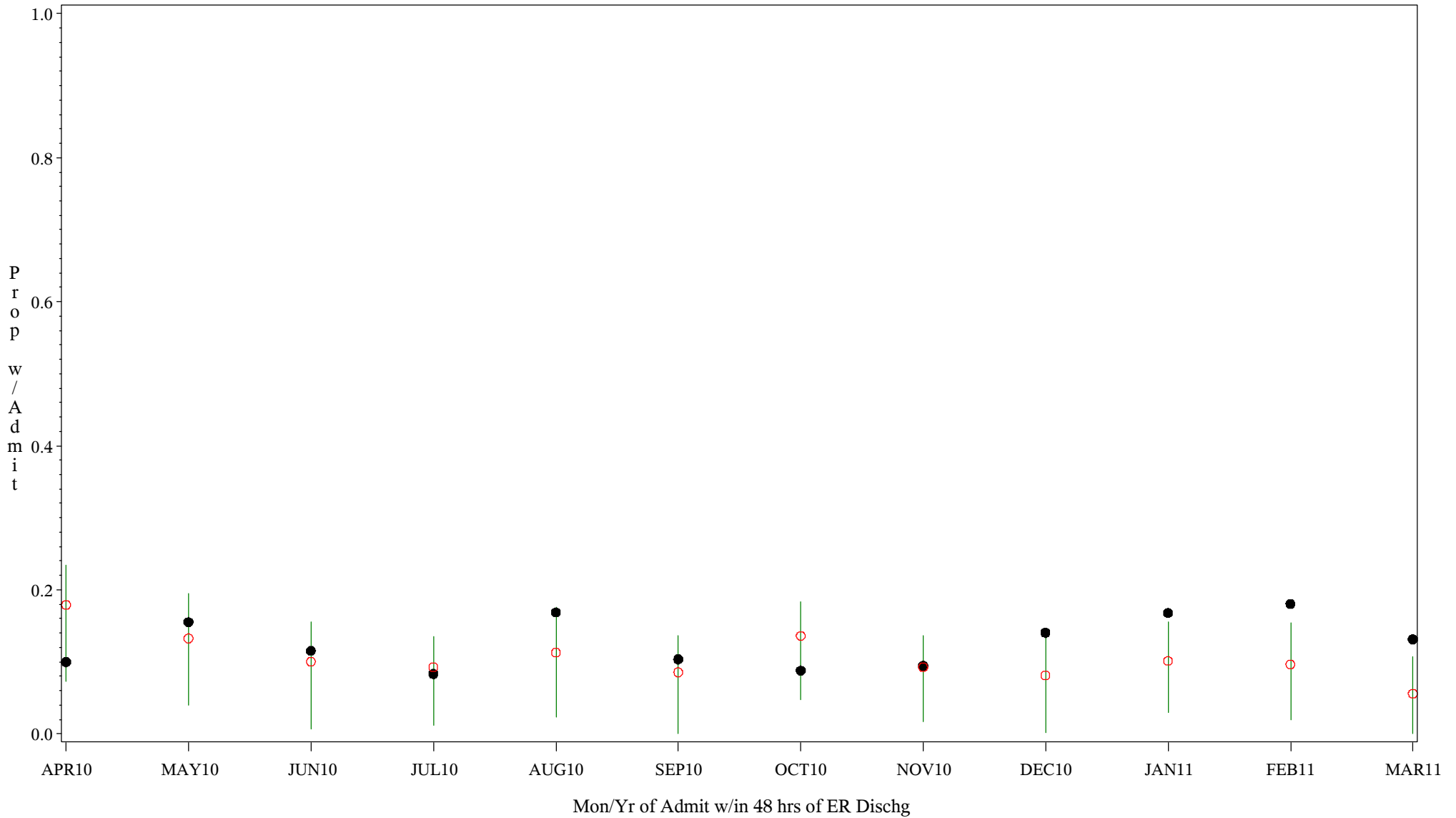
Time Period: April 1, 2010 - March 31, 2011
 Denom=All ER Admits, Numer=Any Admit w/in 48 hrs of ER Dischg
 Chart created: Wednesday, 18MAY2011
 Hospital=San Carlos - Phoenix



PLOT ● Organization's Observed Rate ○ Expected Rate-Comparison Group

Comp Chart for Inadeq Treatment in Emerg Patients (#5161)

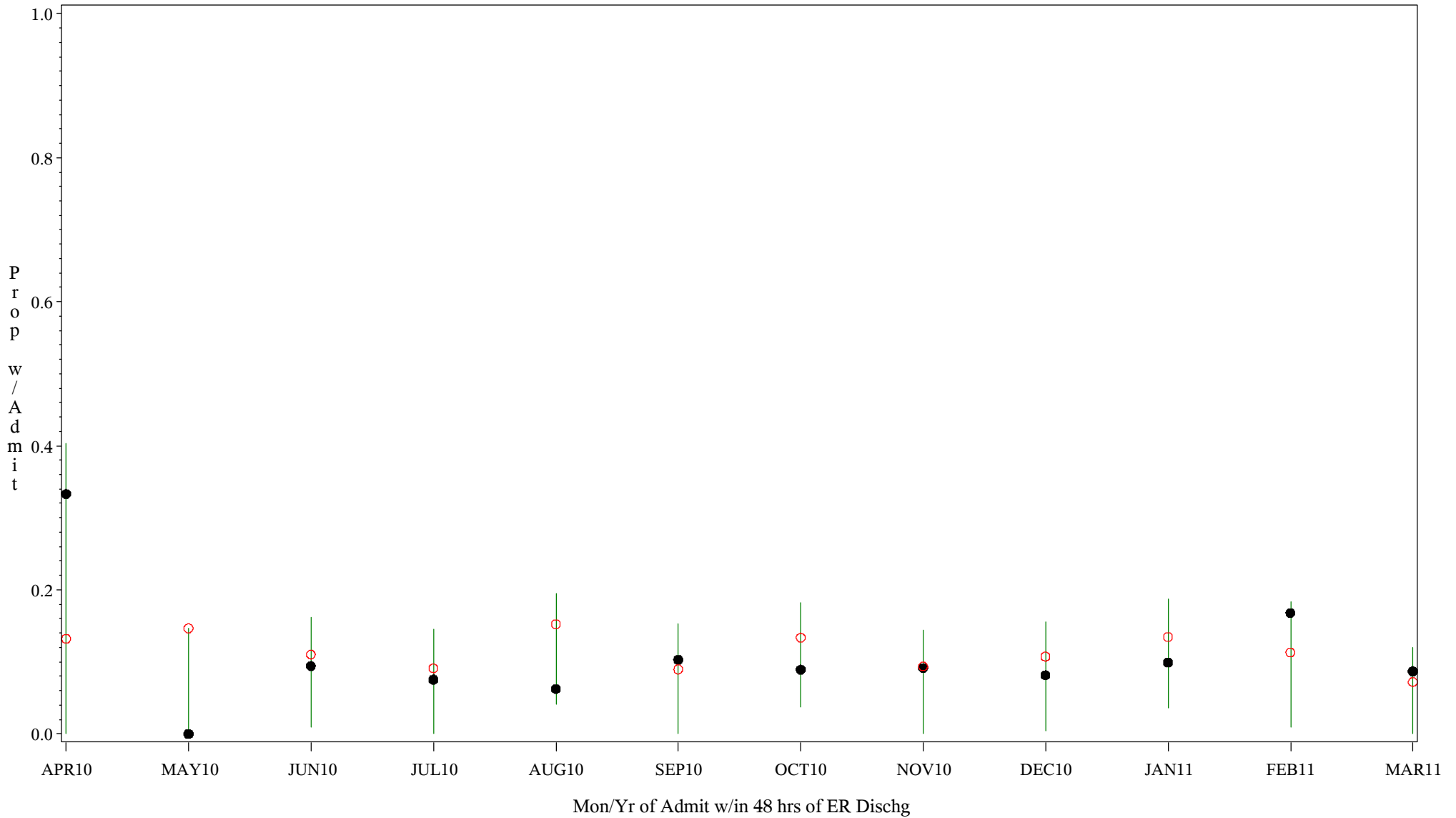
Time Period: April 1, 2010 - March 31, 2011
 Denom=All ER Admits, Numer=Any Admit w/in 48 hrs of ER Dischg
 Chart created: Wednesday, 18MAY2011
 Hospital=GIMC - Navajo



PLOT ● Organization's Observed Rate ○ Expected Rate-Comparison Group

Comp Chart for Inadeq Treatment in Emerg Patients (#5161)

Time Period: April 1, 2010 - March 31, 2011
 Denom=All ER Admits, Numer=Any Admit w/in 48 hrs of ER Dischg
 Chart created: Wednesday, 18MAY2011
 Hospital=Shiprock - Navajo



PLOT ● Organization's Observed Rate ○ Expected Rate-Comparison Group