

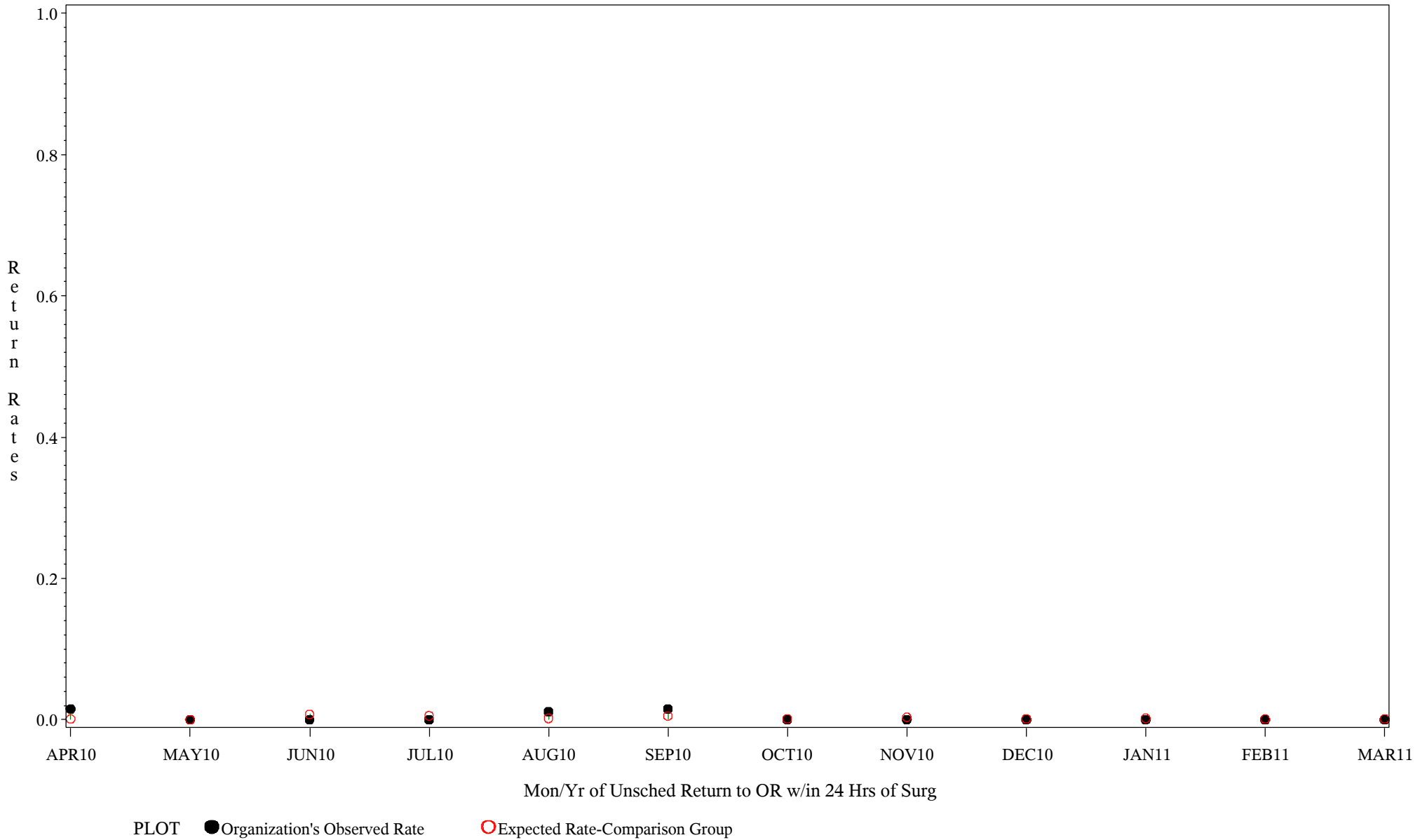
Comparison Chart for Unscheduled Return to O.R.(#5177)

Time Period: April 1, 2010 - March 31, 2011

Denom=All Inpatients w/Surg Proc, Numer=Unscheduled Retrn to OR w/in 24 Hrs

Chart created: Wednesday, 18MAY2011

Hospital=Quentin N Burdick - Aberdeen



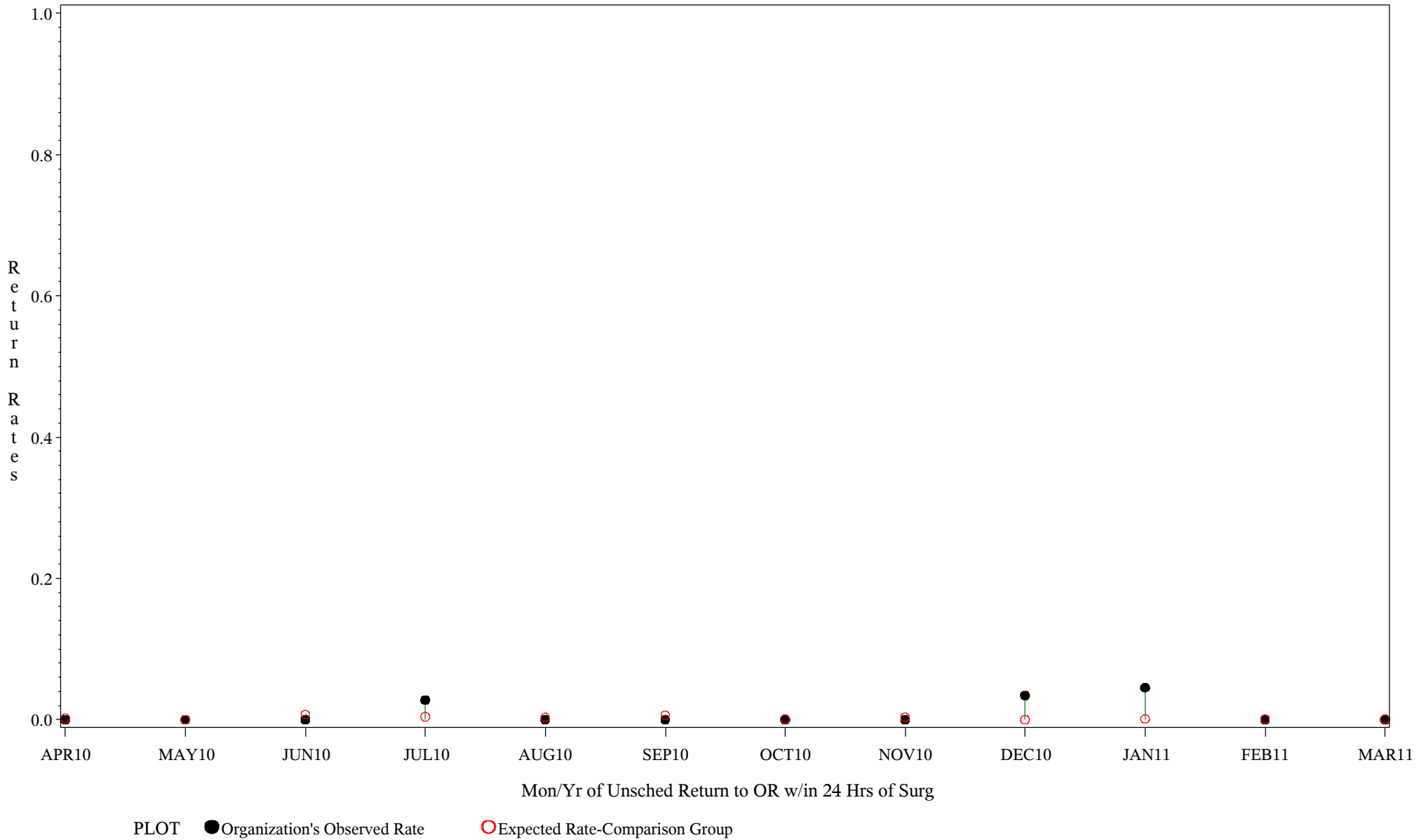
Comparison Chart for Unscheduled Return to O.R.(#5177)

Time Period: April 1, 2010 - March 31, 2011

Denom=All Inpatients w/Surg Proc, Numer=Unscheduled Retrn to OR w/in 24 Hrs

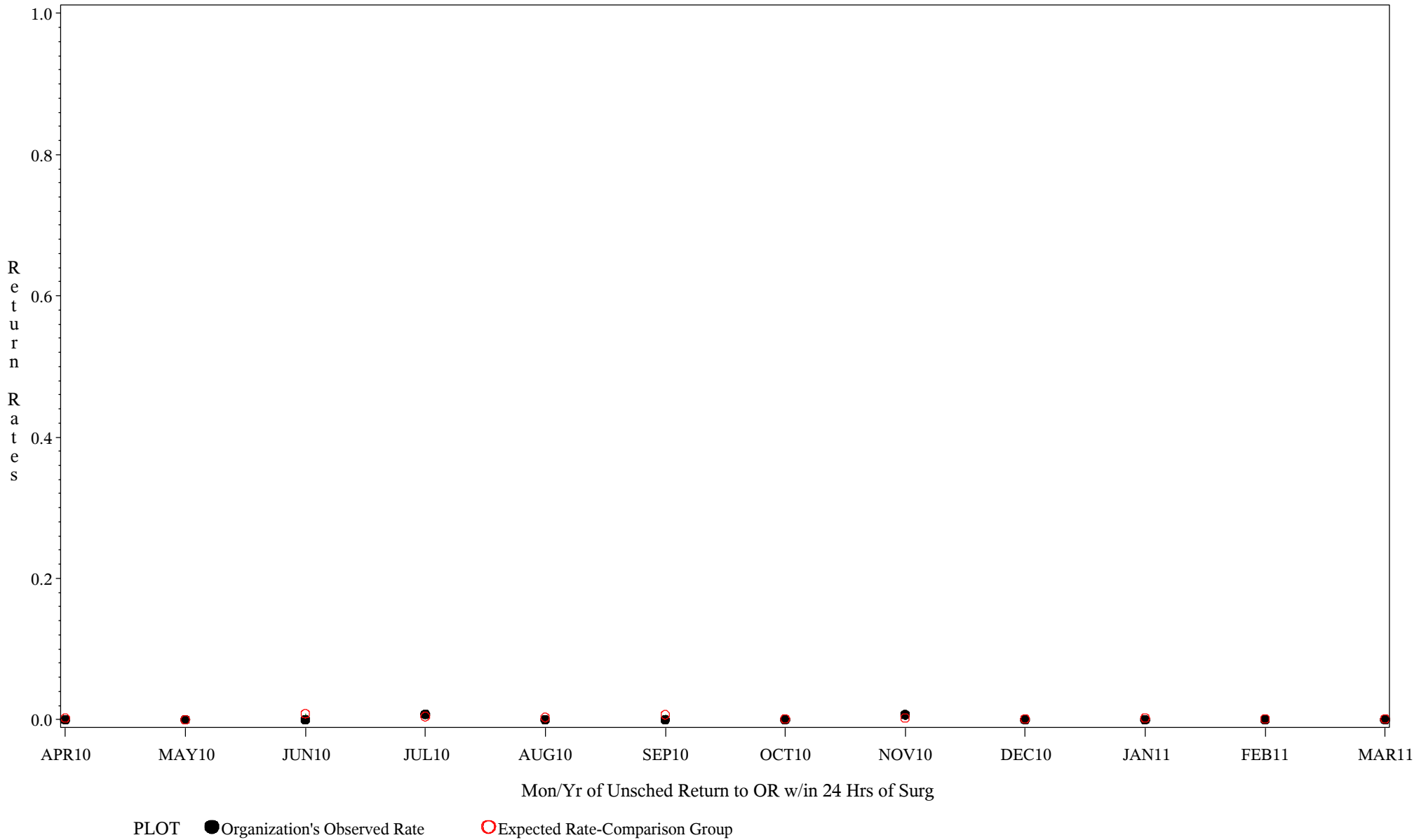
Chart created: Wednesday, 18MAY2011

Hospital=Santa Fe - Albuquerque



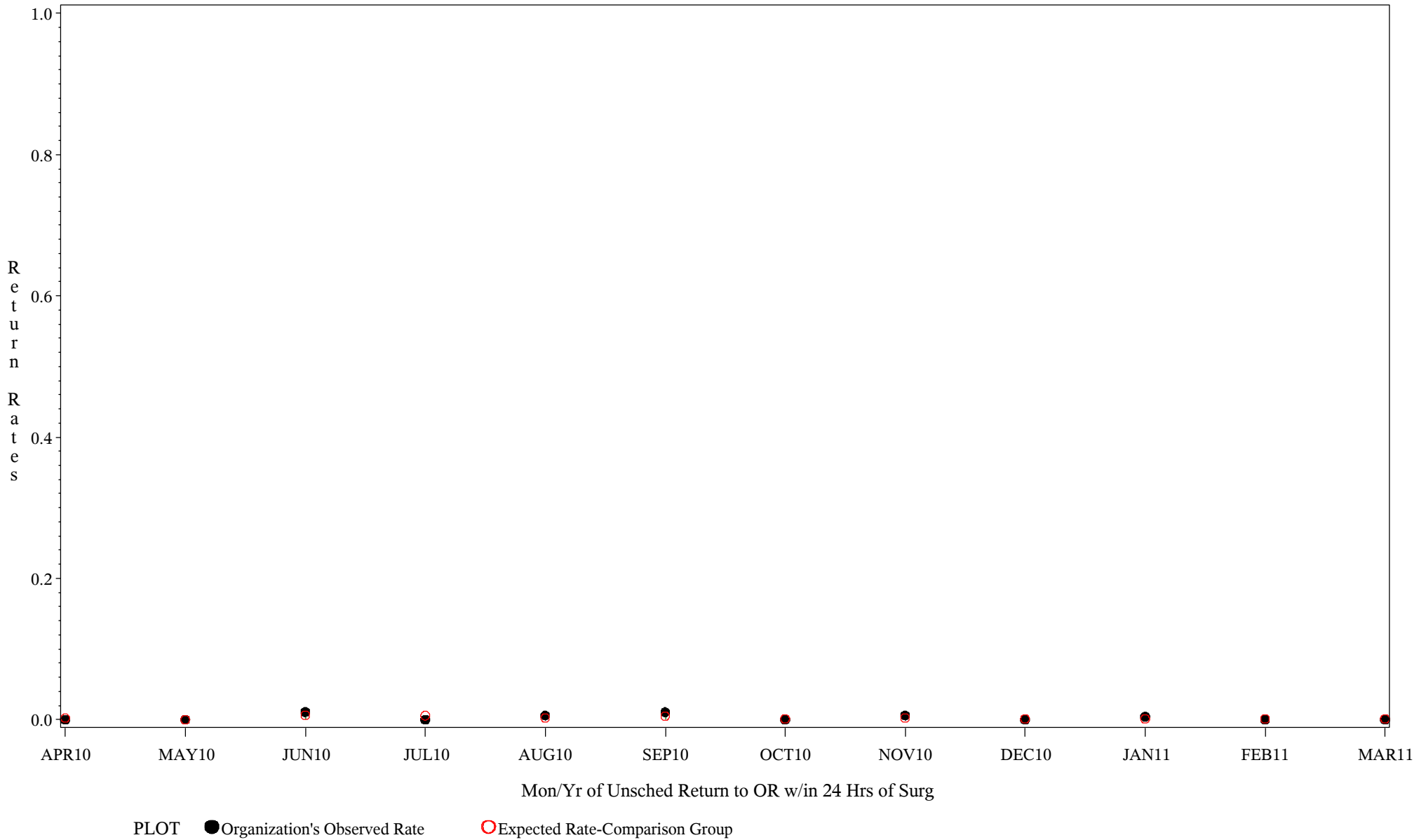
Comparison Chart for Unscheduled Return to O.R.(#5177)

Time Period: April 1, 2010 - March 31, 2011
 Denom=All Inpatients w/Surg Proc, Numer=Unscheduled Retrn to OR w/in 24 Hrs
 Chart created: Wednesday, 18MAY2011
 Hospital=Chickasaw Hospital - Oklahoma



Comparison Chart for Unscheduled Return to O.R.(#5177)

Time Period: April 1, 2010 - March 31, 2011
Denom=All Inpatients w/Surg Proc, Numer=Unscheduled Retrn to OR w/in 24 Hrs
Chart created: Wednesday, 18MAY2011
Hospital=Chinle - Navajo



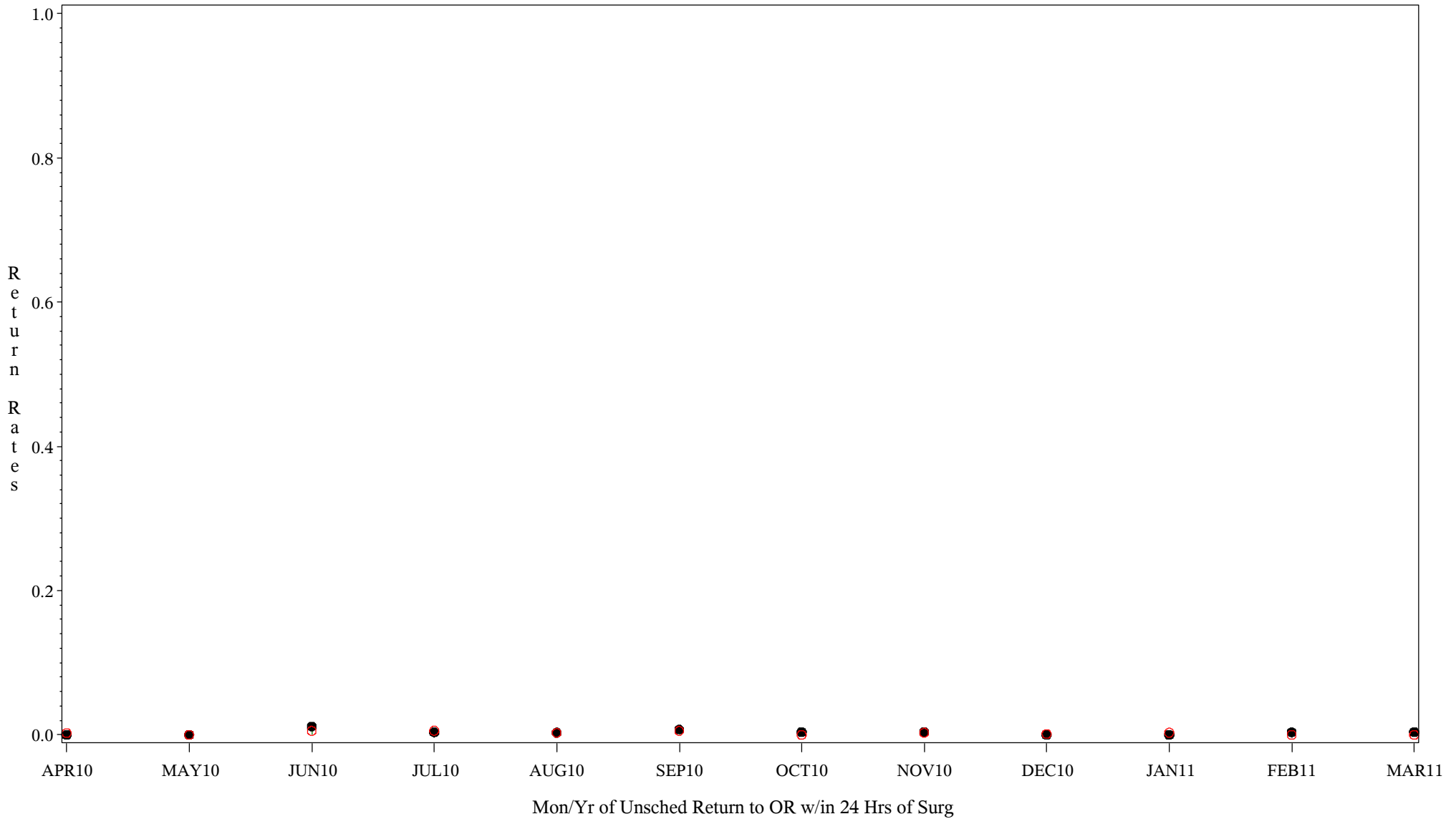
Comparison Chart for Unscheduled Return to O.R.(#5177)

Time Period: April 1, 2010 - March 31, 2011

Denom=All Inpatients w/Surg Proc, Numer=Unscheduled Retrn to OR w/in 24 Hrs

Chart created: Wednesday, 18MAY2011

Hospital=GIMC - Navajo



PLOT ● Organization's Observed Rate ○ Expected Rate-Comparison Group

Comparison Chart for Unscheduled Return to O.R.(#5177)

Time Period: April 1, 2010 - March 31, 2011

Denom=All Inpatients w/Surg Proc, Numer=Unscheduled Retrtn to OR w/in 24 Hrs

Chart created: Wednesday, 18MAY2011

Hospital=Shiprock - Navajo

