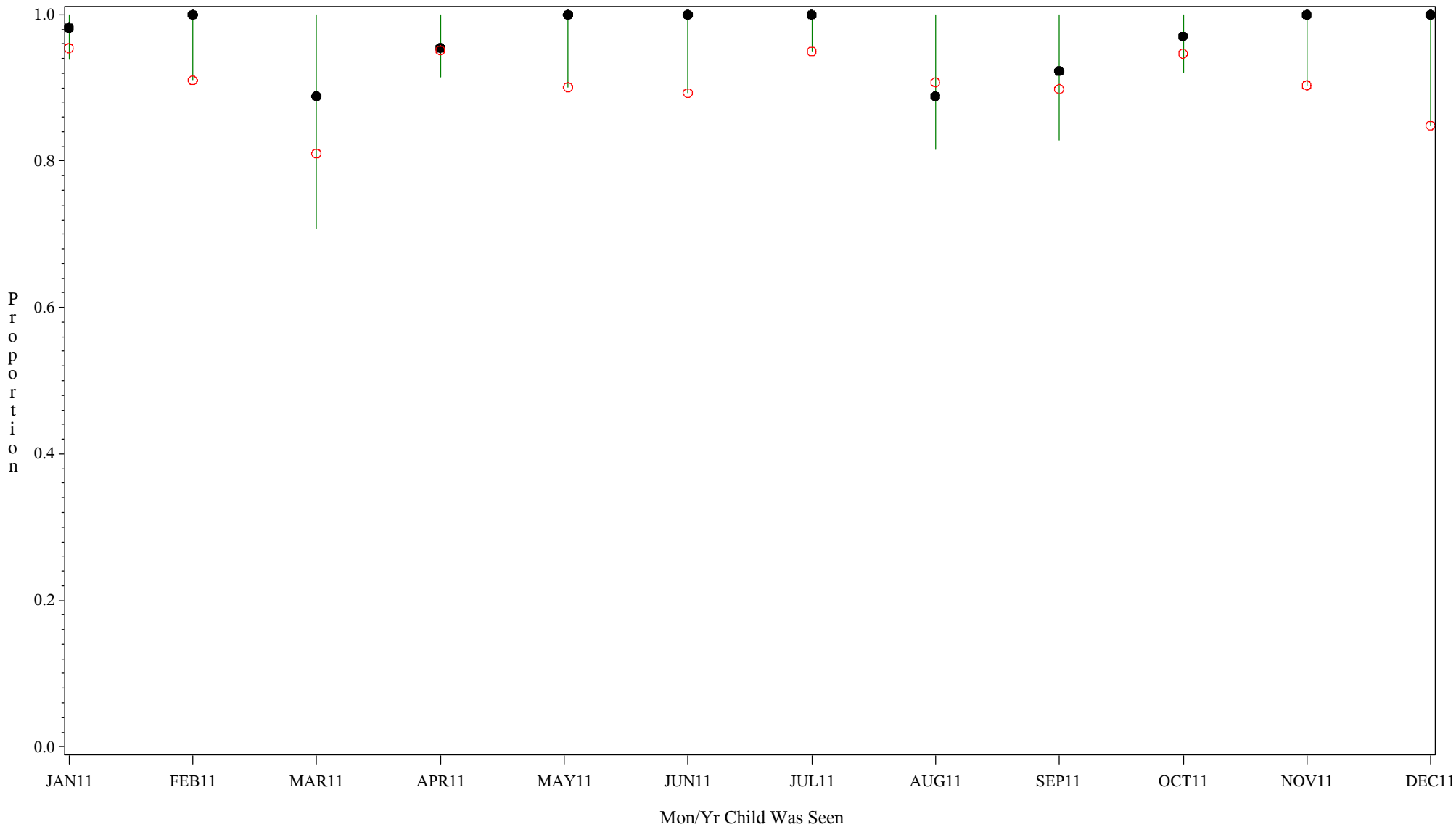


Comp Chart for Up-to-Date Immuniz (HEPB) (#5133)

Time Period: January 1, 2011 - December 31, 2011
Denominator=Children 0-4, Numerator=Up-to-Date Shots
Chart created: Friday, 02MAR2012
hospital=Sells - Tucson



PLOT ● Organization's Observed Rate ○ Expected Rate-Comparison Group

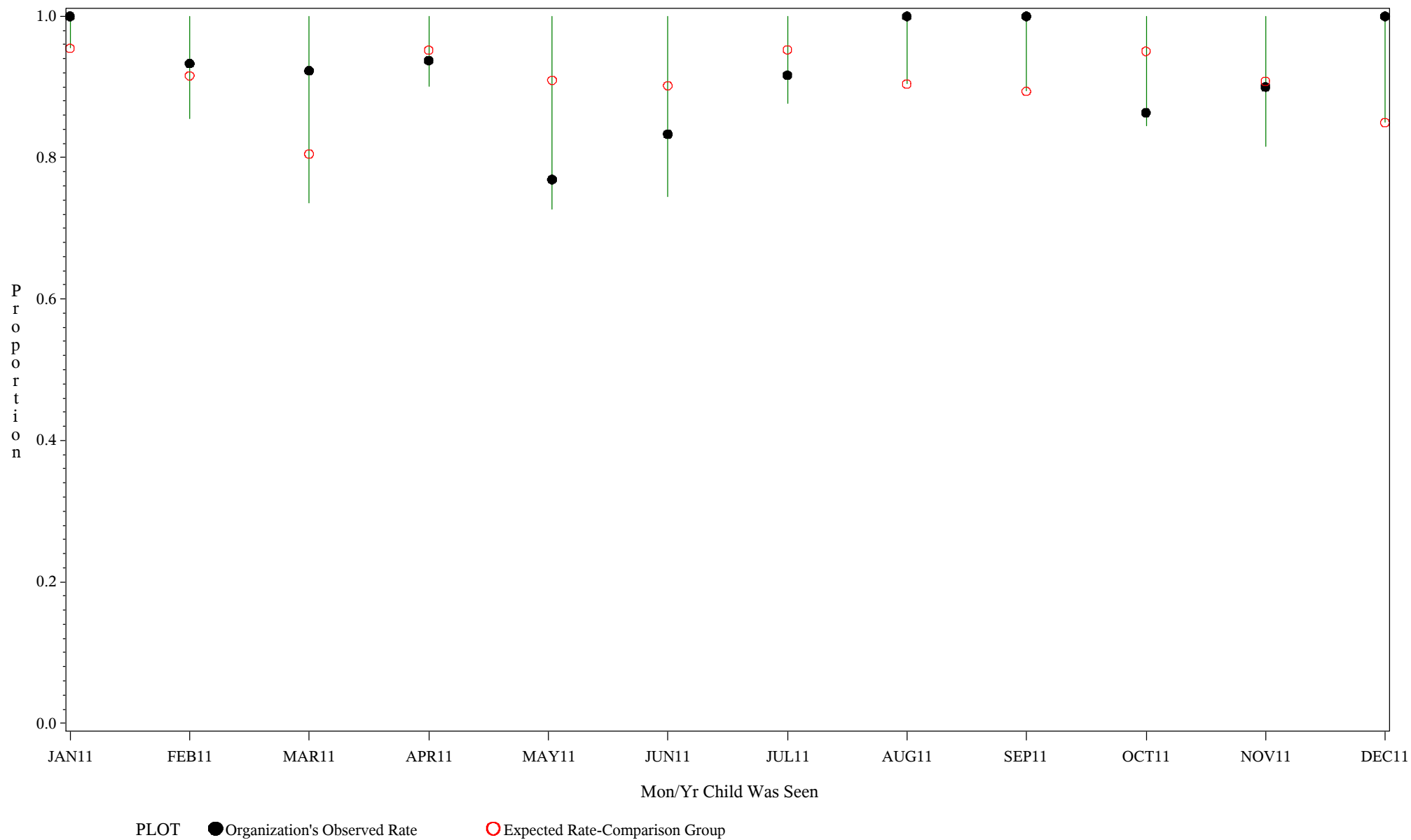
Comp Chart for Up-to-Date Immuniz (HEPB) (#5133)

Time Period: January 1, 2011 - December 31, 2011

Denominator=Children 0-4, Numerator=Up-to-Date Shots

Chart created: Friday, 02MAR2012

hospital=Ft. Yates - Aberdeen



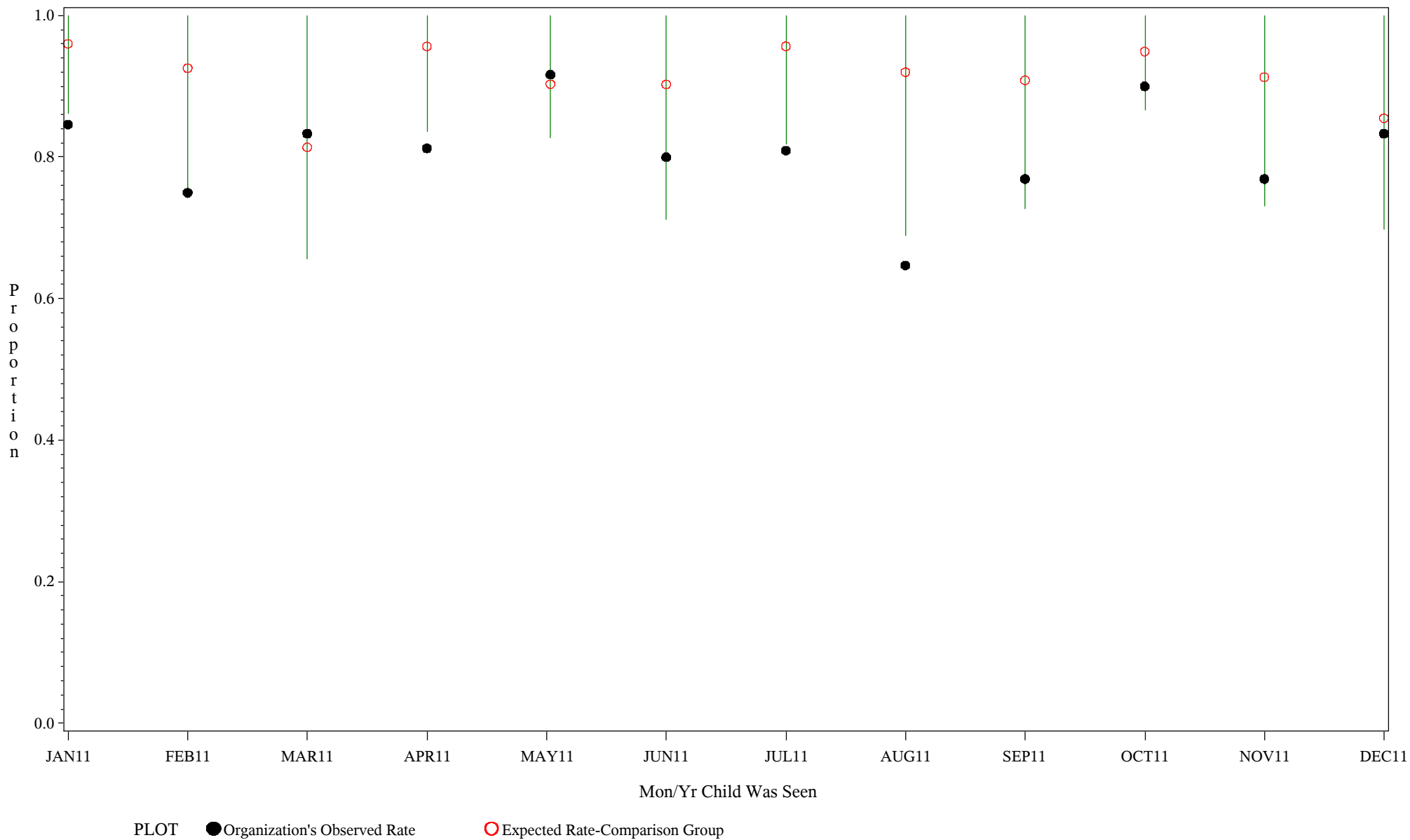
Comp Chart for Up-to-Date Immuniz (HEPB) (#5133)

Time Period: January 1, 2011 - December 31, 2011

Denominator=Children 0-4, Numerator=Up-to-Date Shots

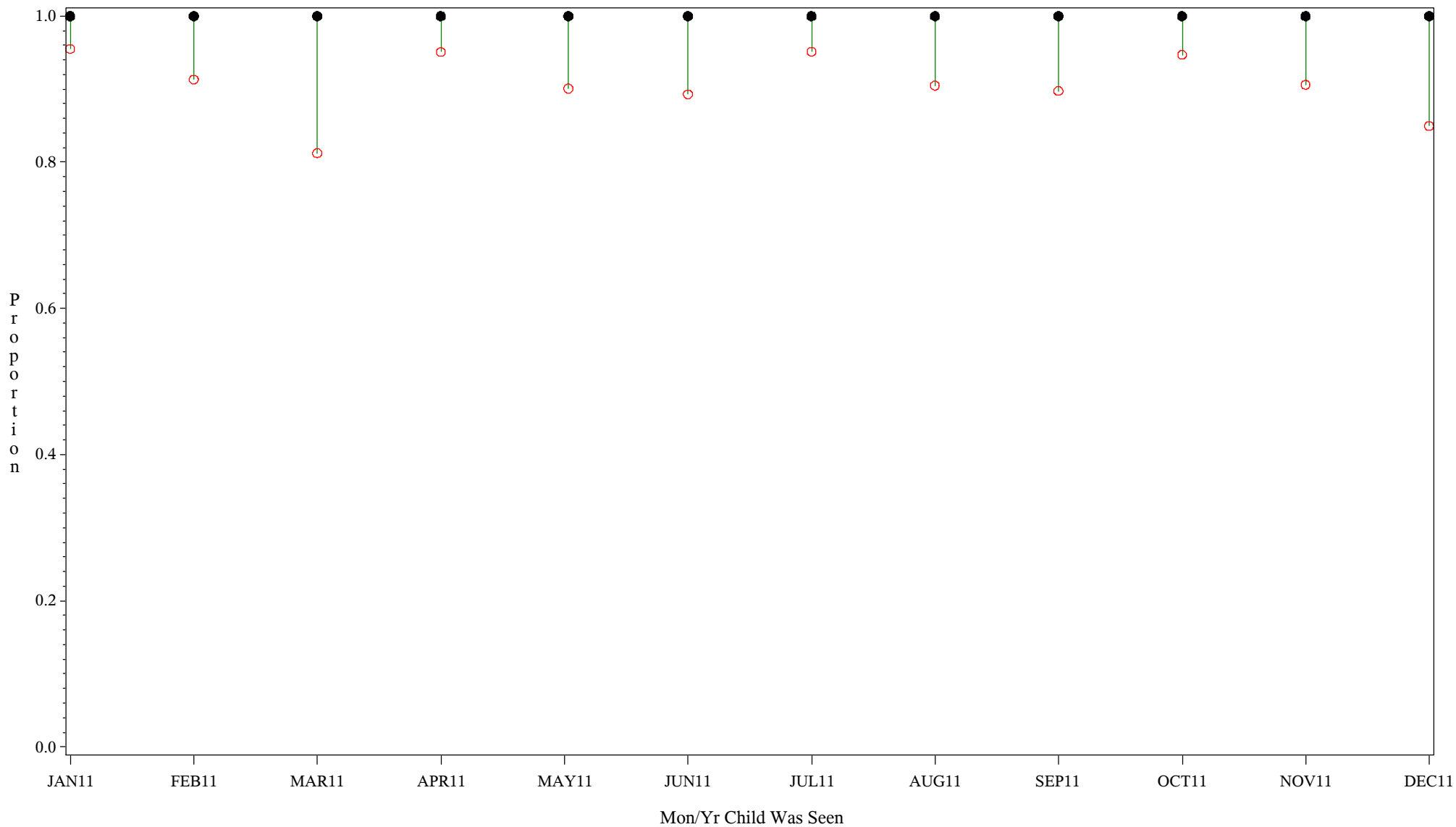
Chart created: Friday, 02MAR2012

hospital=Winnebago - Aberdeen



Comp Chart for Up-to-Date Immuniz (HEPB) (#5133)

Time Period: January 1, 2011 - December 31, 2011
Denominator=Children 0-4, Numerator=Up-to-Date Shots
Chart created: Friday, 02MAR2012
hospital=Mescalero - Albuquerque



PLOT ● Organization's Observed Rate ○ Expected Rate-Comparison Group

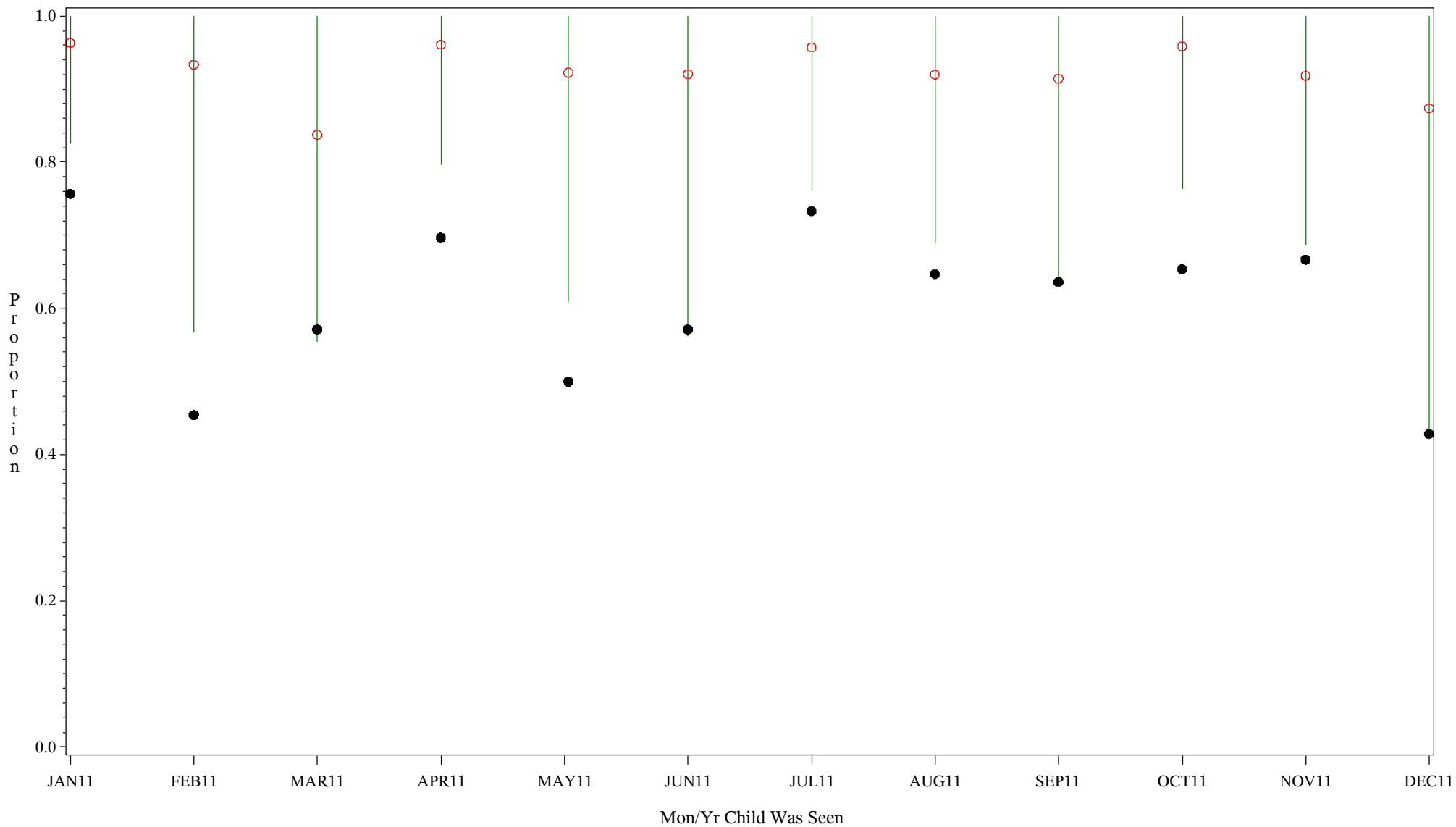
Comp Chart for Up-to-Date Immuniz (HEPB) (#5133)

Time Period: January 1, 2011 - December 31, 2011

Denominator=Children 0-4, Numerator=Up-to-Date Shots

Chart created: Friday, 02MAR2012

hospital=Santa Fe - Albuquerque



PLOT ● Organization's Observed Rate

○ Expected Rate-Comparison Group

Source: ORYX2.rate5133

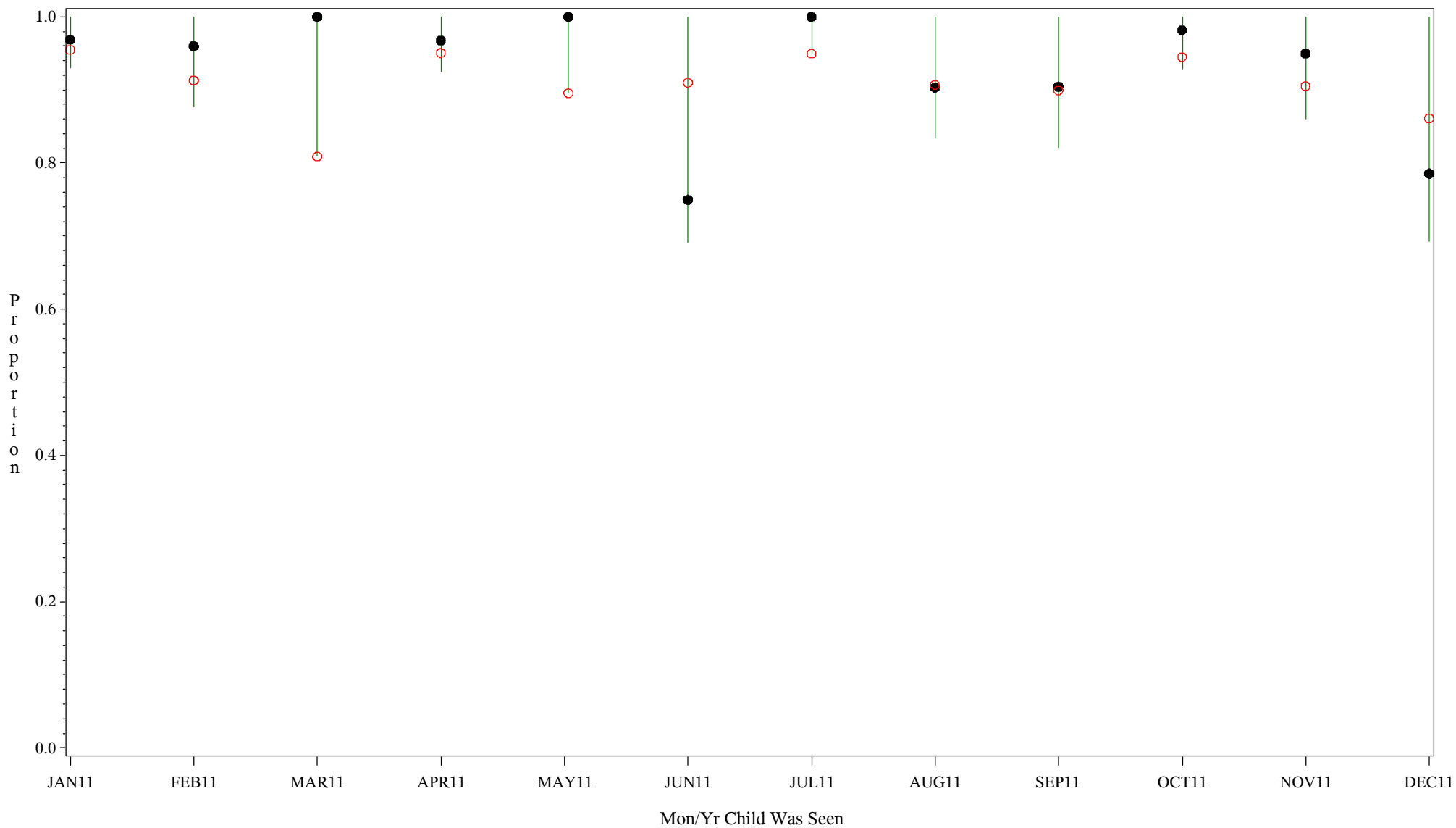
Comp Chart for Up-to-Date Immuniz (HEPB) (#5133)

Time Period: January 1, 2011 - December 31, 2011

Denominator=Children 0-4, Numerator=Up-to-Date Shots

Chart created: Friday, 02MAR2012

hospital=Zuni - Albuquerque

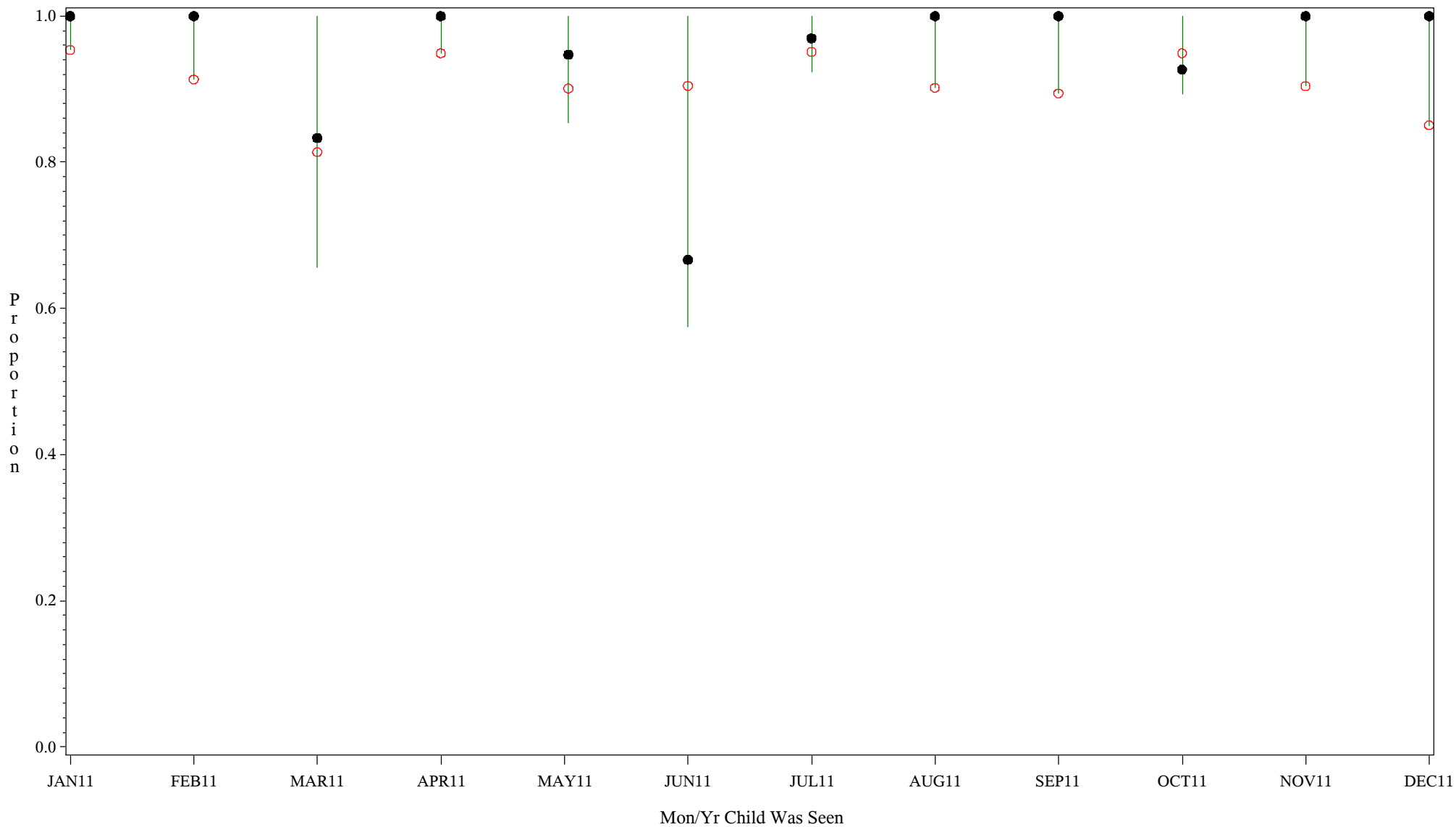


PLOT ● Organization's Observed Rate ○ Expected Rate-Comparison Group

Source: ORYX2.rate5133

Comp Chart for Up-to-Date Immuniz (HEPB) (#5133)

Time Period: January 1, 2011 - December 31, 2011
Denominator=Children 0-4, Numerator=Up-to-Date Shots
Chart created: Friday, 02MAR2012
hospital=Barrow - Alaska



PLOT ● Organization's Observed Rate ○ Expected Rate-Comparison Group

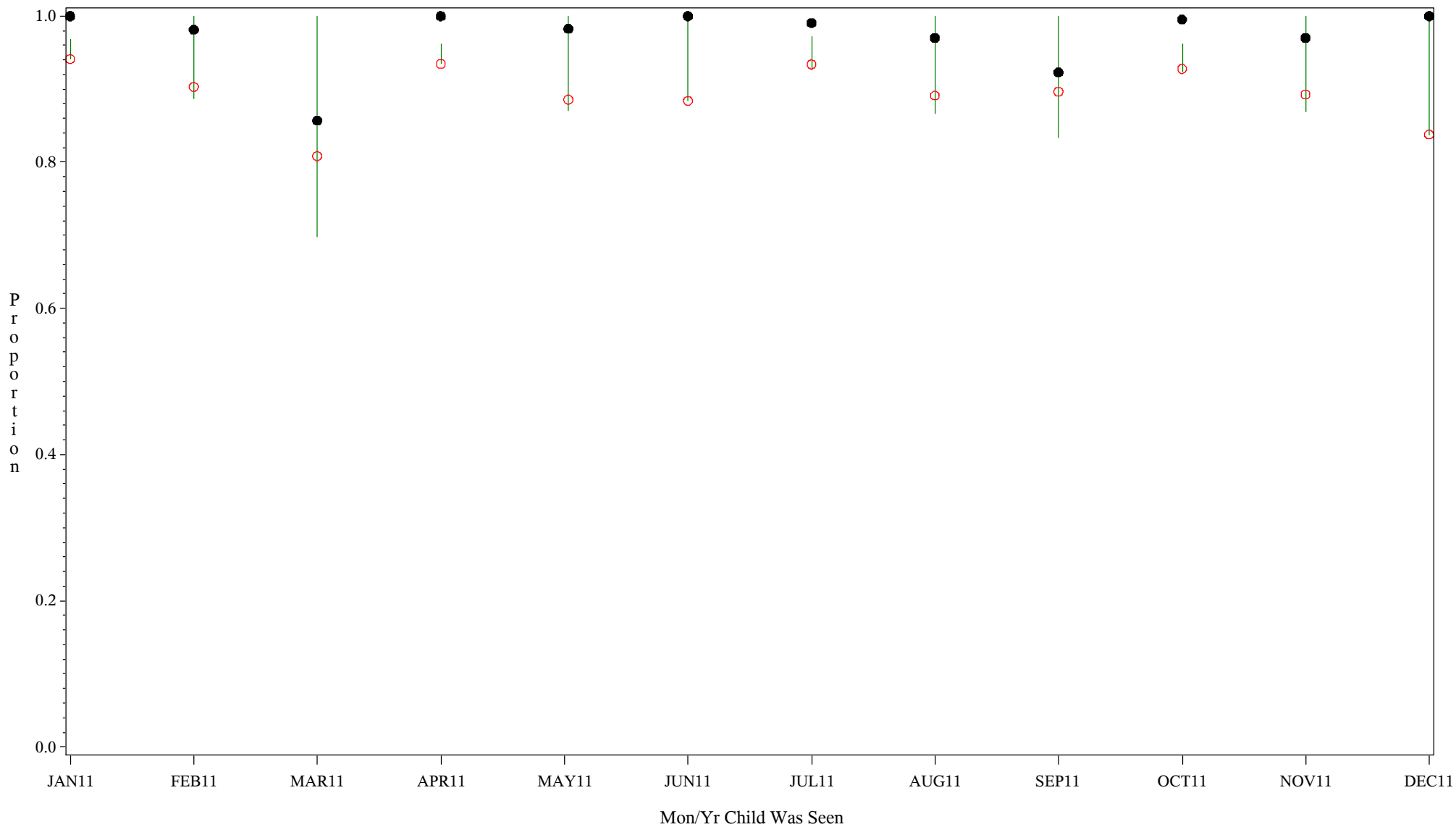
Comp Chart for Up-to-Date Immuniz (HEPB) (#5133)

Time Period: January 1, 2011 - December 31, 2011

Denominator=Children 0-4, Numerator=Up-to-Date Shots

Chart created: Friday, 02MAR2012

hospital=YK Health - Alaska

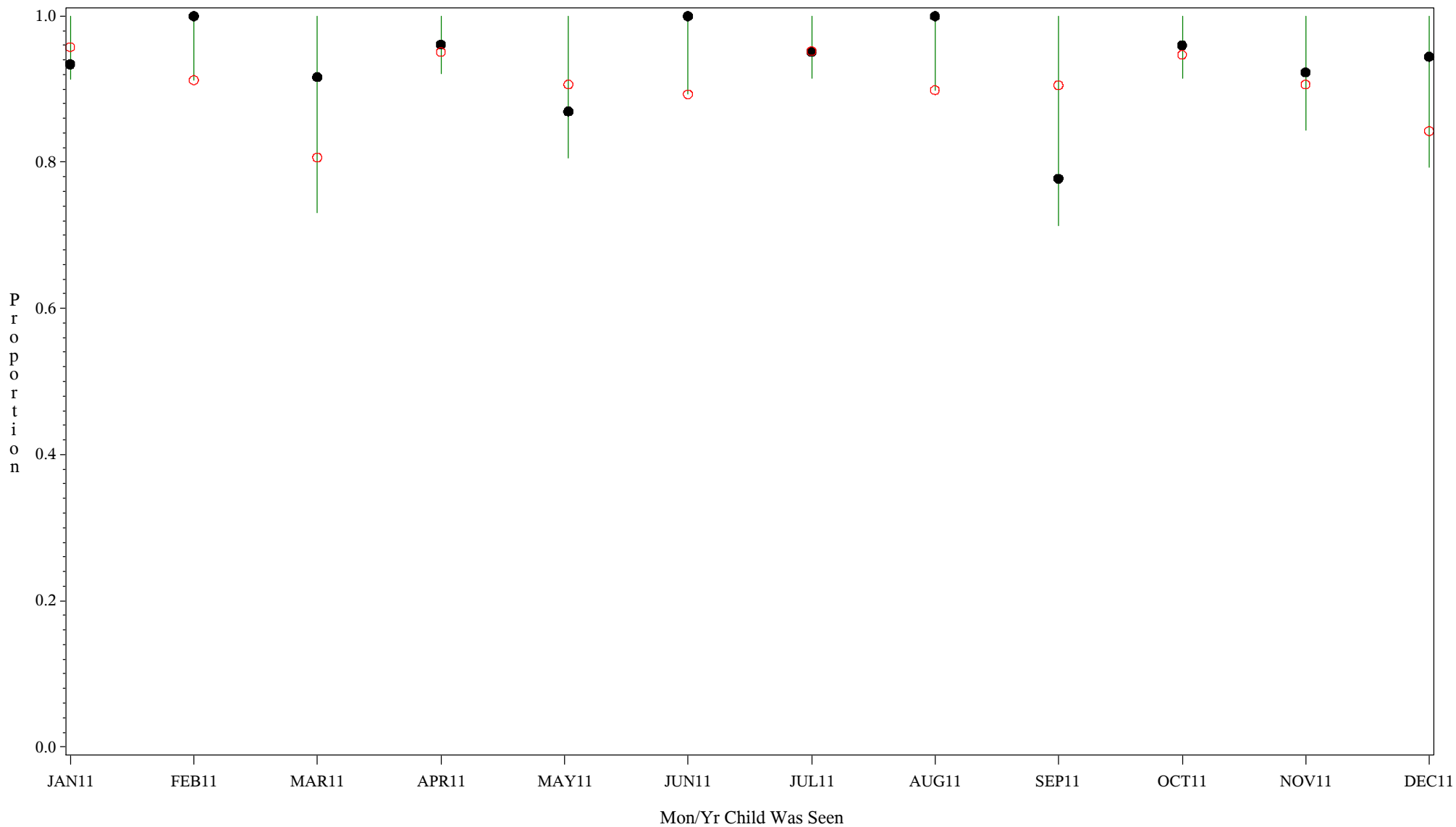


PLOT ● Organization's Observed Rate ○ Expected Rate-Comparison Group

Source: ORYX2.rate5133

Comp Chart for Up-to-Date Immuniz (HEPB) (#5133)

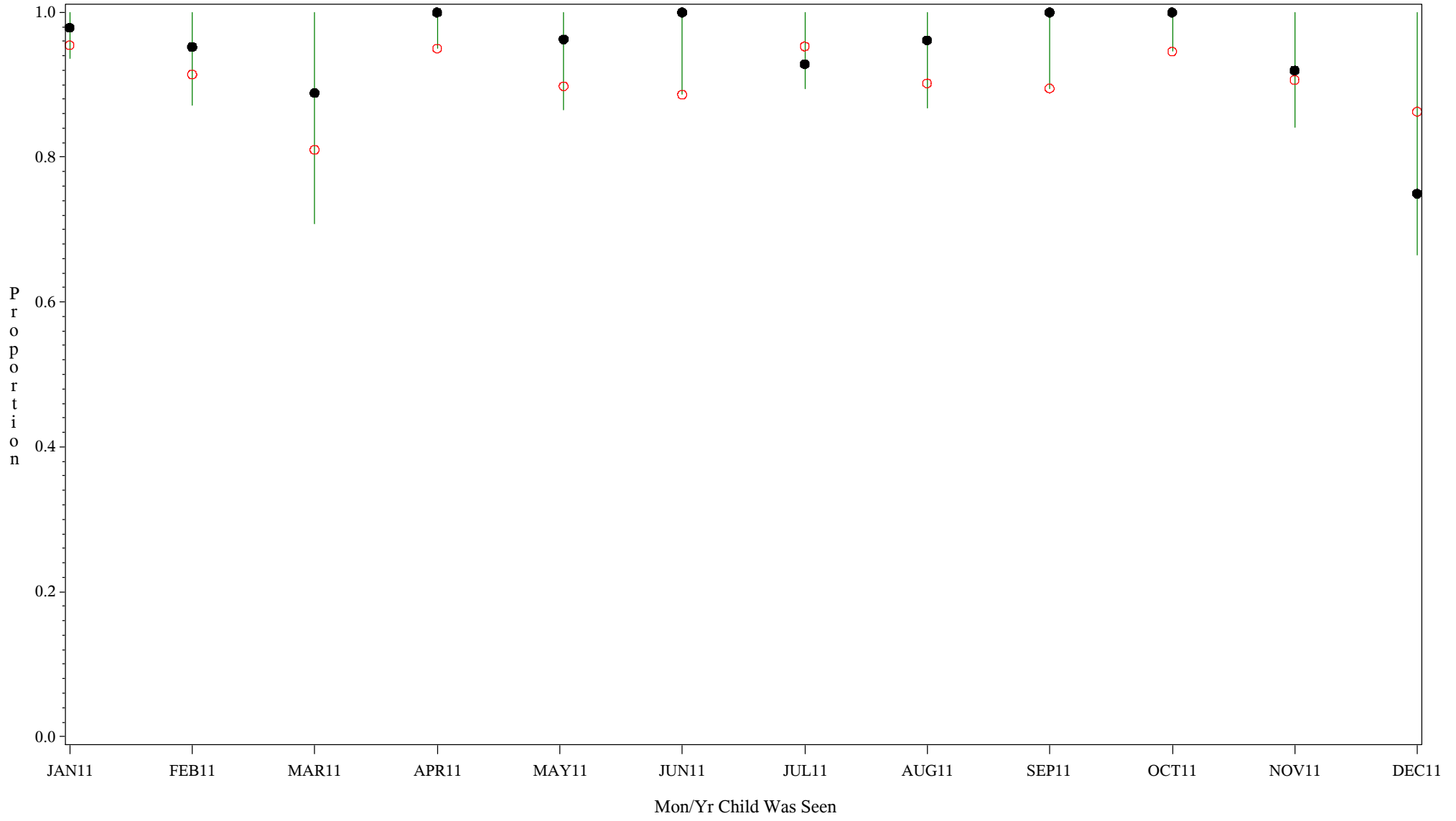
Time Period: January 1, 2011 - December 31, 2011
 Denominator=Children 0-4, Numerator=Up-to-Date Shots
 Chart created: Friday, 02MAR2012
 hospital=Maniilaq - Alaska



PLOT ● Organization's Observed Rate ○ Expected Rate-Comparison Group

Comp Chart for Up-to-Date Immuniz (HEPB) (#5133)

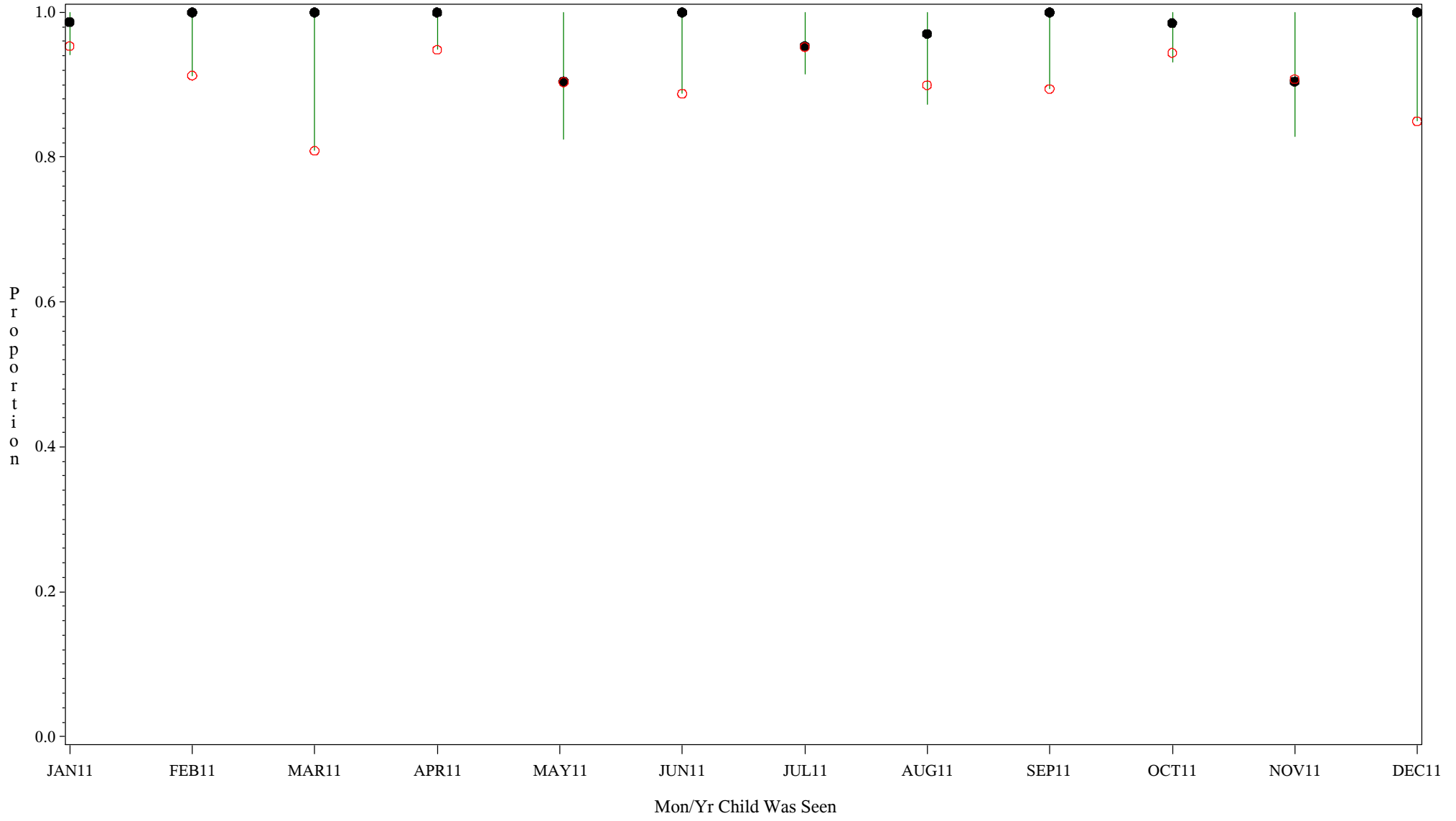
Time Period: January 1, 2011 - December 31, 2011
 Denominator=Children 0-4, Numerator=Up-to-Date Shots
 Chart created: Friday, 02MAR2012
 hospital=Lawton - Oklahoma



PLOT ● Organization's Observed Rate ○ Expected Rate-Comparison Group

Comp Chart for Up-to-Date Immuniz (HEPB) (#5133)

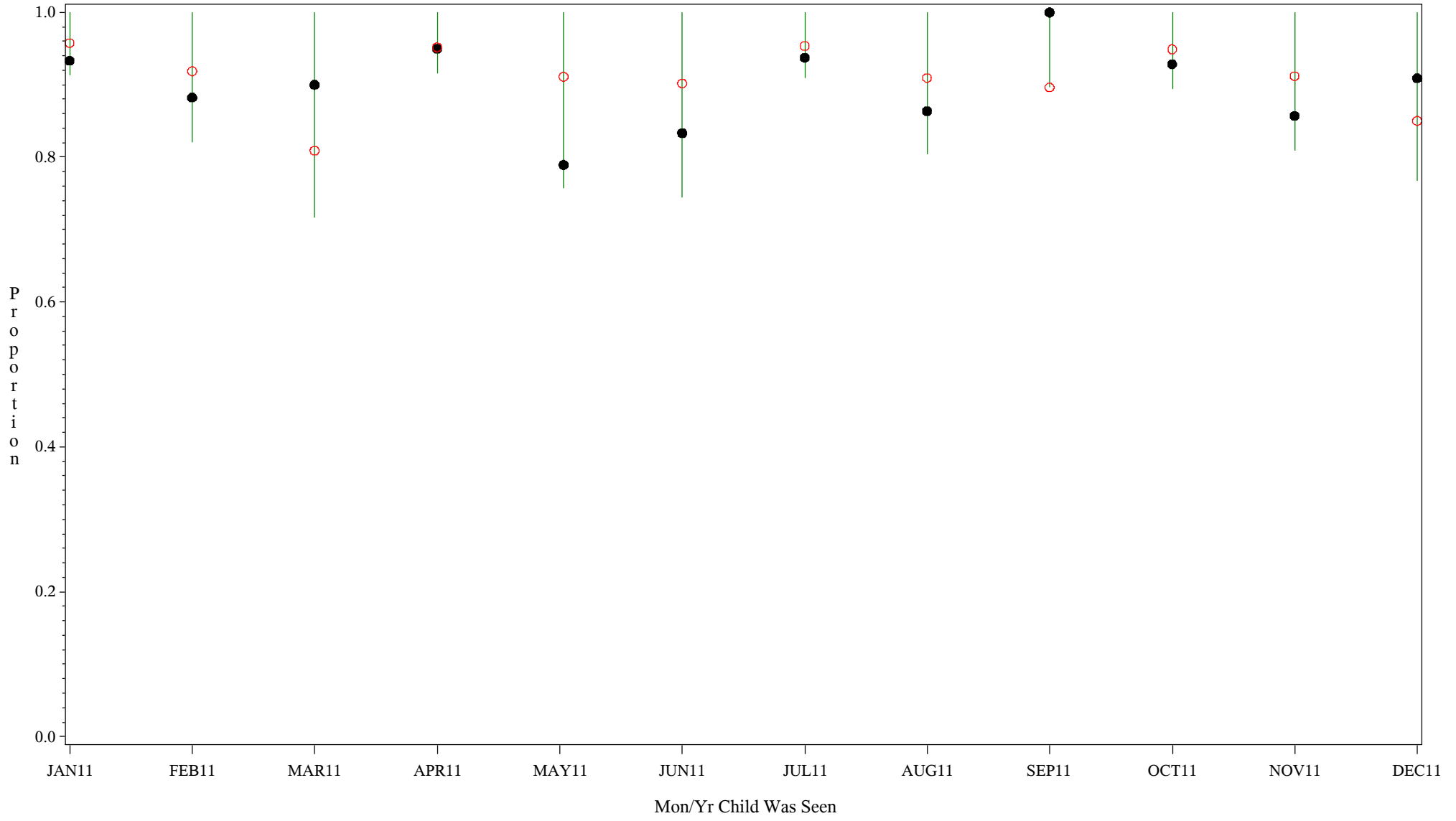
Time Period: January 1, 2011 - December 31, 2011
Denominator=Children 0-4, Numerator=Up-to-Date Shots
Chart created: Friday, 02MAR2012
hospital=Choctaw Hosp - Nashville



PLOT ● Organization's Observed Rate ○ Expected Rate-Comparison Group

Comp Chart for Up-to-Date Immuniz (HEPB) (#5133)

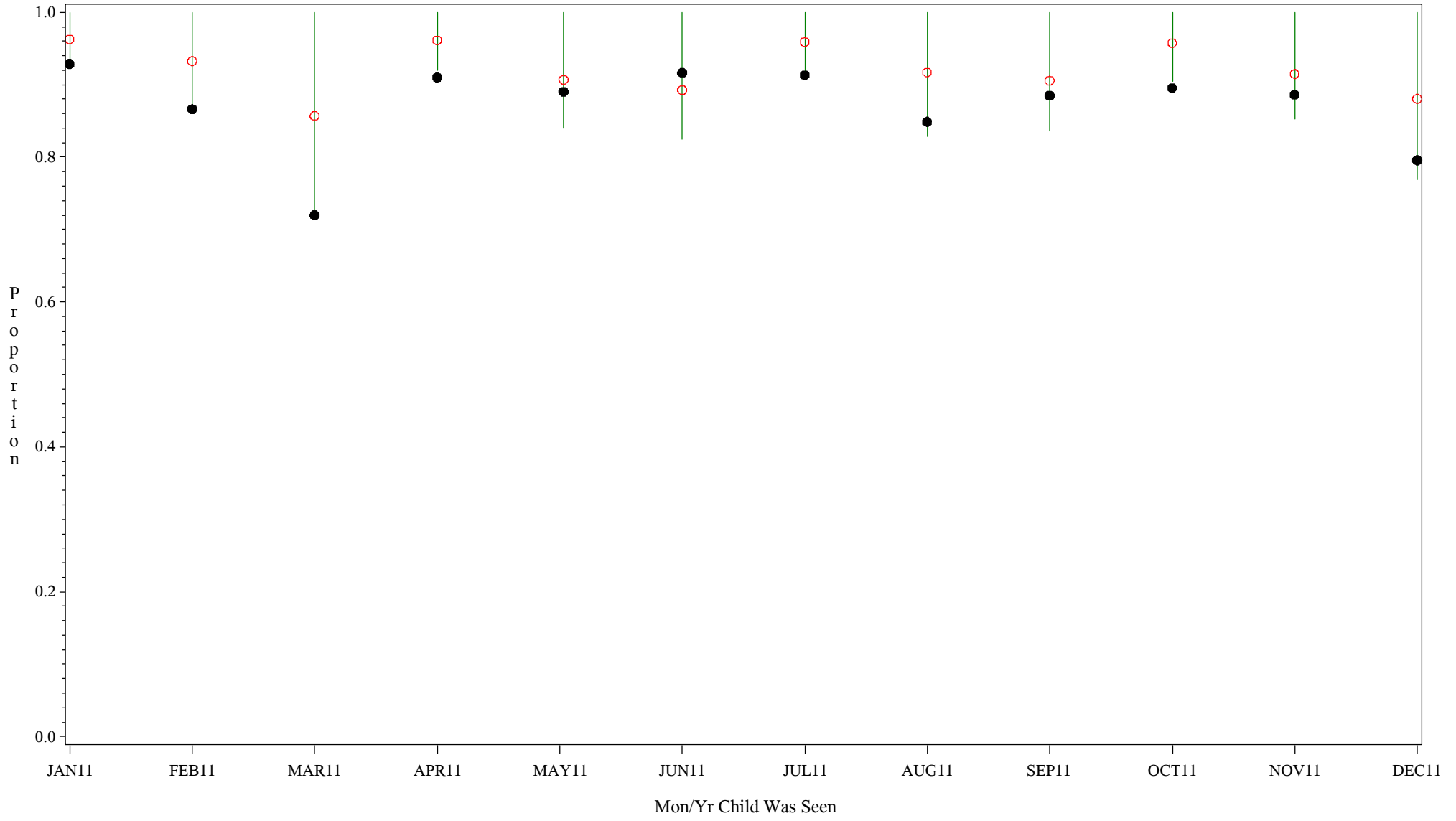
Time Period: January 1, 2011 - December 31, 2011
Denominator=Children 0-4, Numerator=Up-to-Date Shots
Chart created: Friday, 02MAR2012
hospital=San Carlos - Phoenix



PLOT ● Organization's Observed Rate ○ Expected Rate-Comparison Group

Comp Chart for Up-to-Date Immuniz (HEPB) (#5133)

Time Period: January 1, 2011 - December 31, 2011
Denominator=Children 0-4, Numerator=Up-to-Date Shots
Chart created: Friday, 02MAR2012
hospital=GIMC - Navajo



PLOT ● Organization's Observed Rate ○ Expected Rate-Comparison Group