

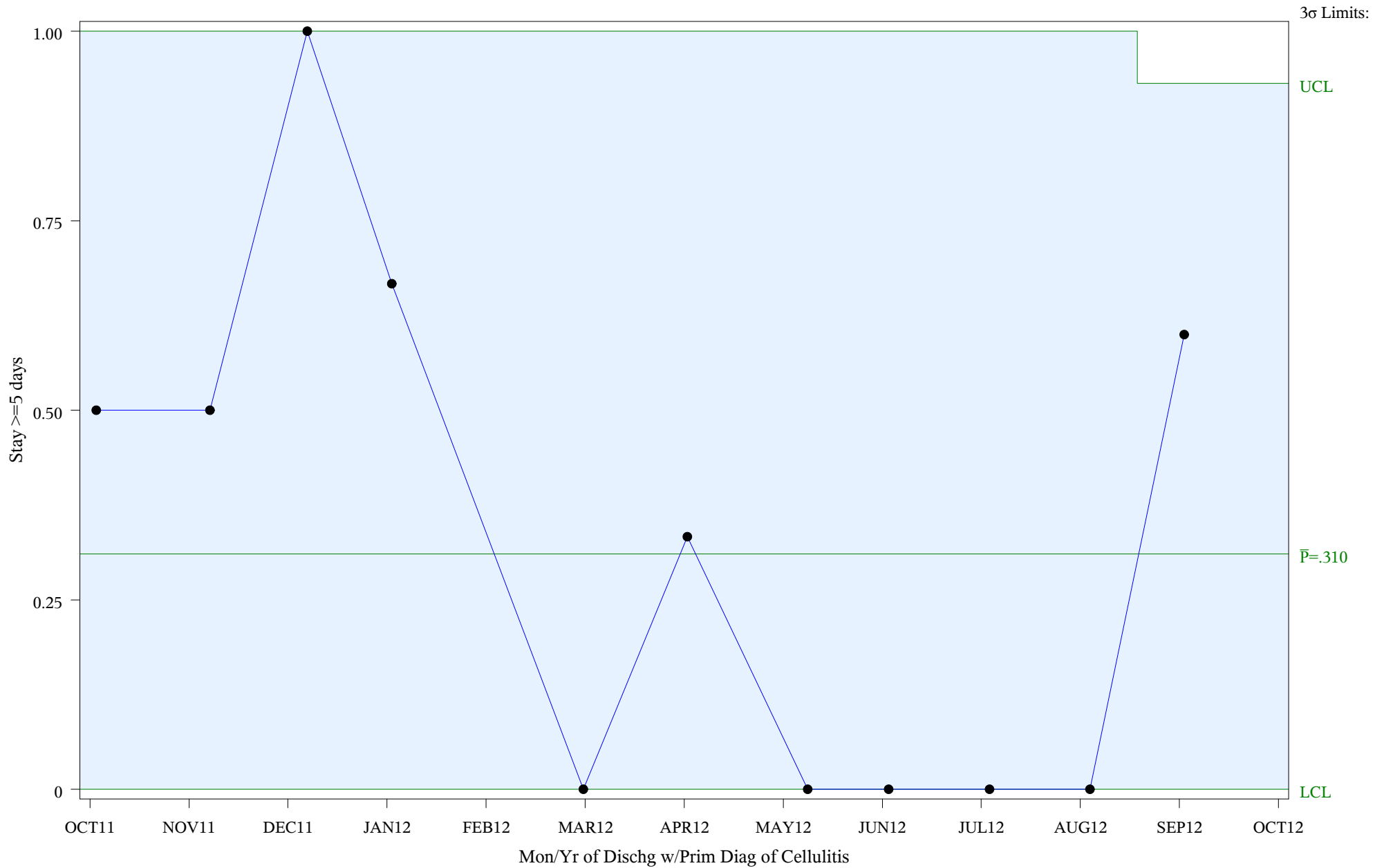
P Chart for Medical Management of Cellulitis (#5086)

Time Period: October 1, 2011 - September 30, 2012

Denom=All Admit w/Prim Diagnosis of Cellulitis, Num=Stay >=5 days

Chart created: Wednesday, 28NOV2012

Hospital=Quentin N Burdick - Aberdeen



Subgroup Sizes: Min n = 1 Max n = 5

Source: ORYX2.rate5086

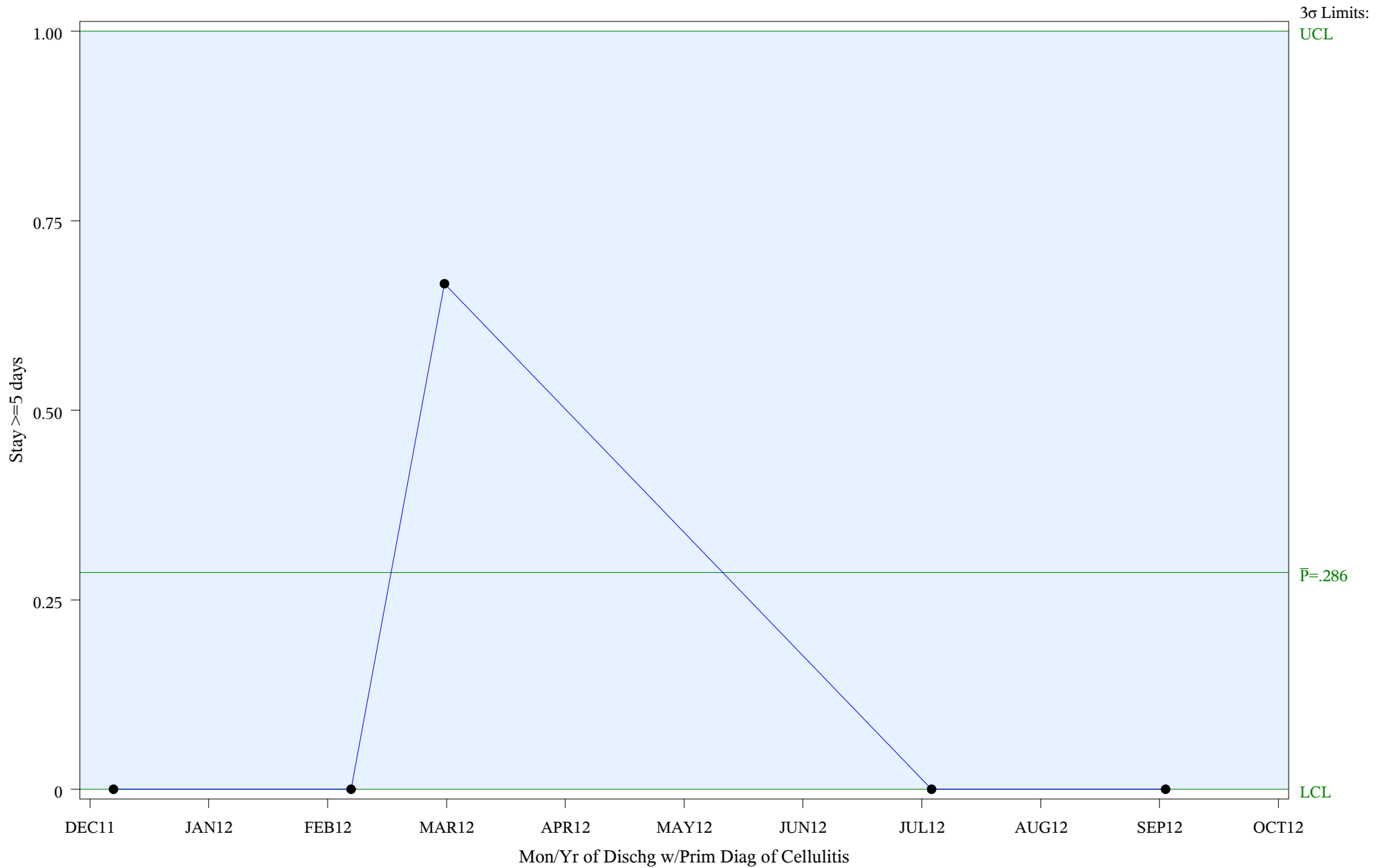
P Chart for Medical Management of Cellulitis (#5086)

Time Period: October 1, 2011 - September 30, 2012

Denom=All Admit w/Prim Diagnosis of Cellulitis, Num=Stay >=5 days

Chart created: Wednesday, 28NOV2012

Hospital=Winnebago - Aberdeen



Subgroup Sizes: Min n = 1 Max n = 3

Source: ORYX2.rate5086

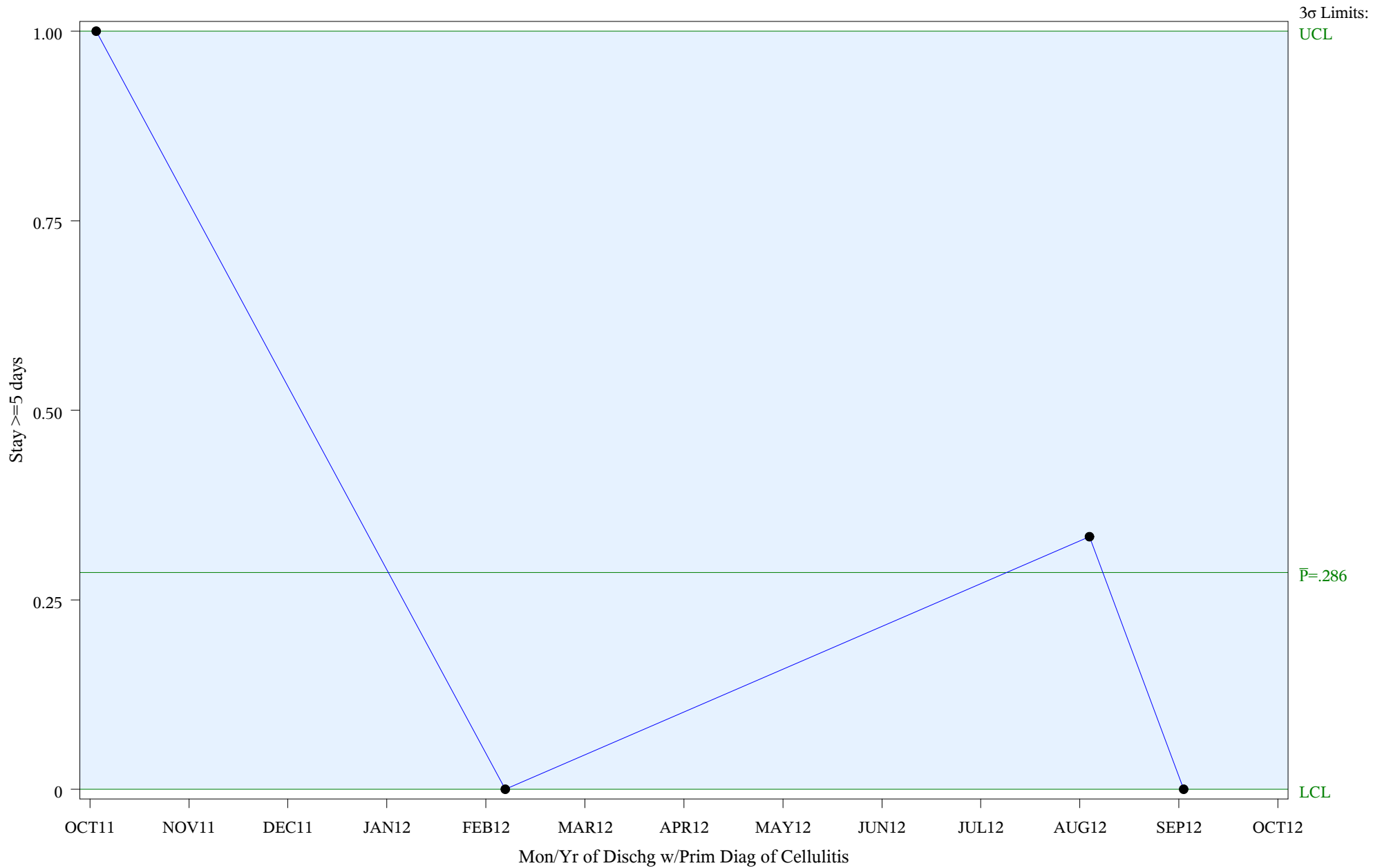
P Chart for Medical Management of Cellulitis (#5086)

Time Period: October 1, 2011 - September 30, 2012

Denom=All Admit w/Prim Diagnosis of Cellulitis, Num=Stay >=5 days

Chart created: Wednesday, 28NOV2012

Hospital=Zuni - Albuquerque



Subgroup Sizes: Min n = 1 Max n = 3

Source: ORYX2.rate5086

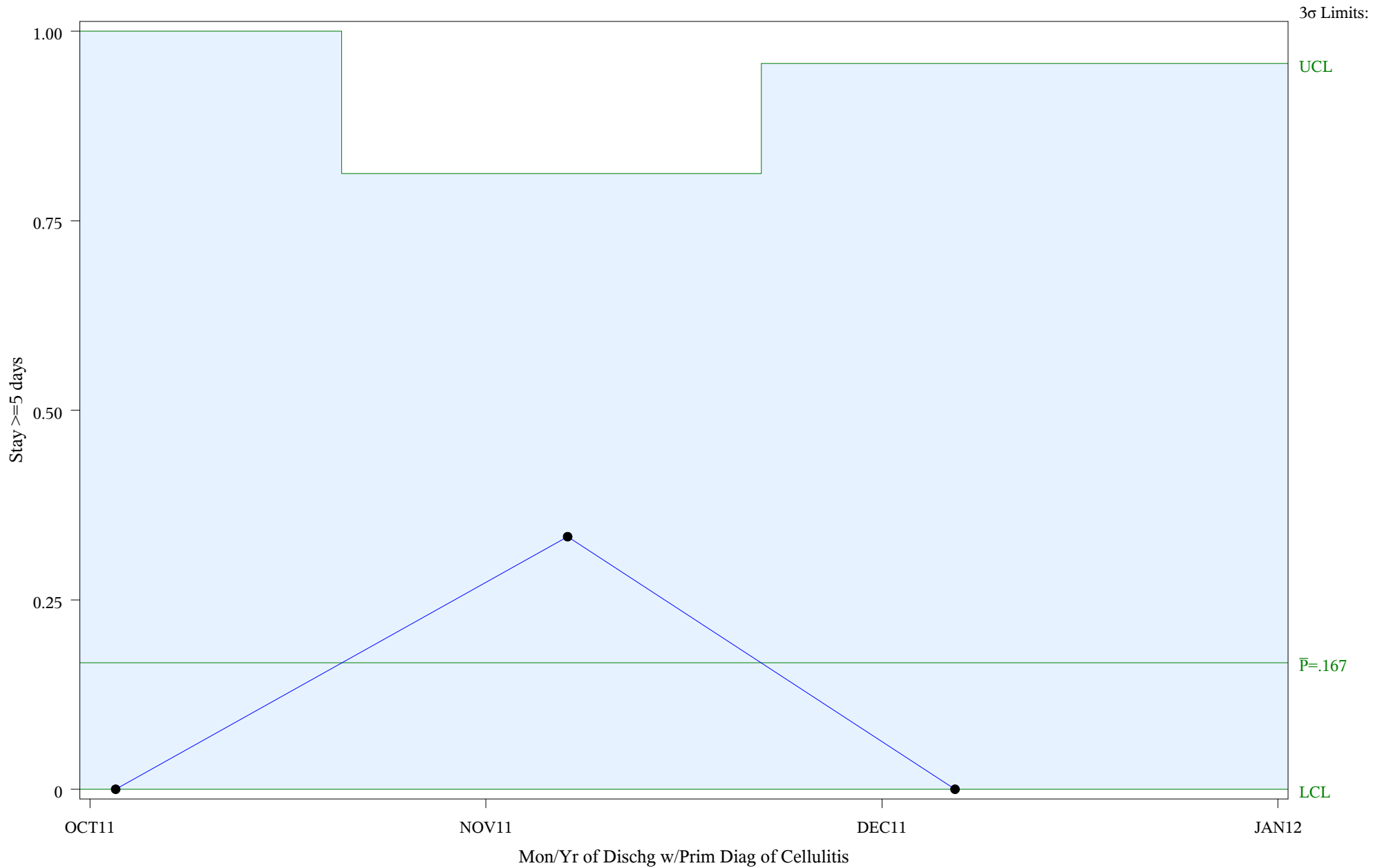
P Chart for Medical Management of Cellulitis (#5086)

Time Period: October 1, 2011 - September 30, 2012

Denom=All Admit w/Prim Diagnosis of Cellulitis, Num=Stay >=5 days

Chart created: Wednesday, 28NOV2012

Hospital=Barrow - Alaska



Subgroup Sizes: Min n = 1 Max n = 3

Source: ORYX2.rate5086

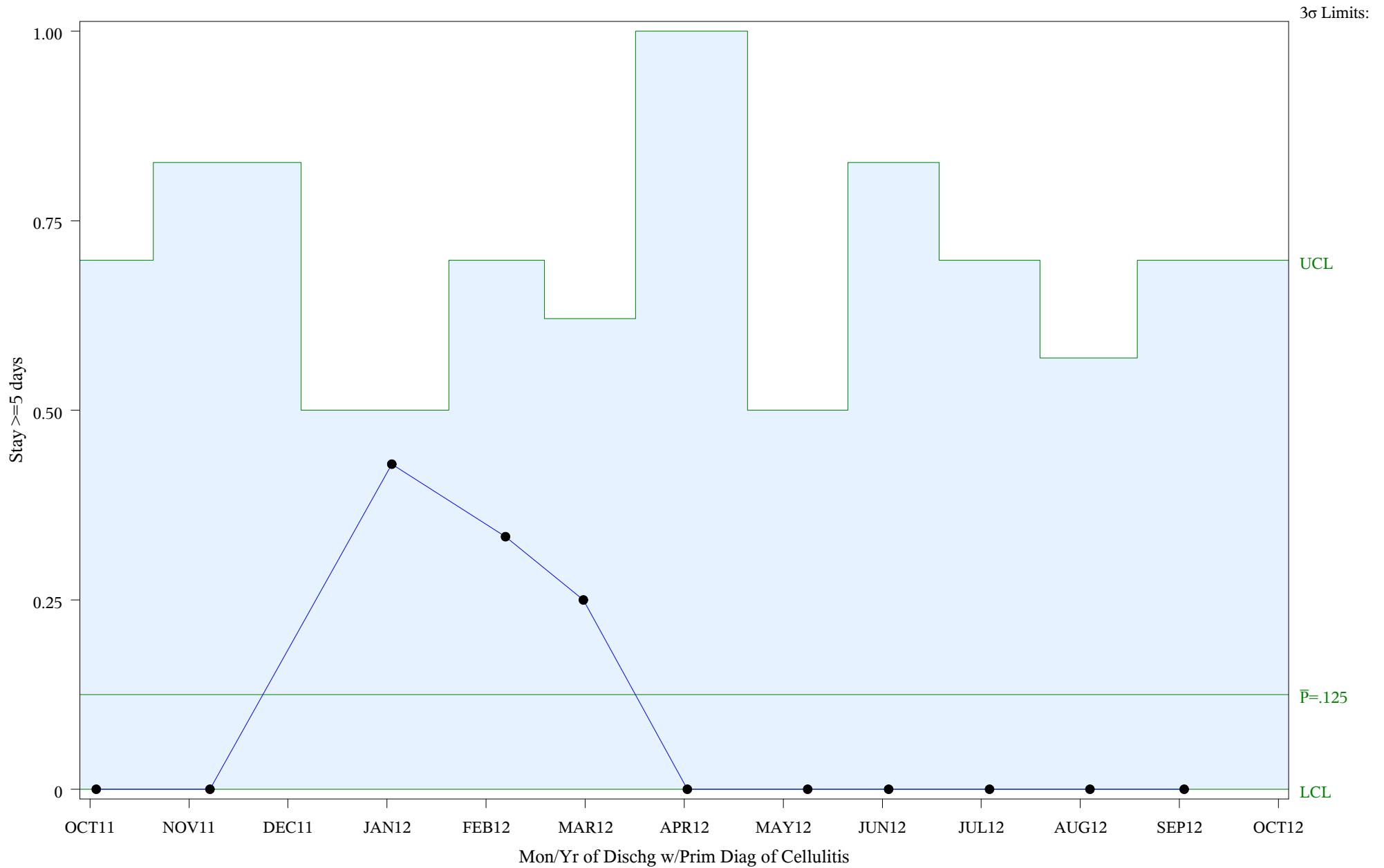
P Chart for Medical Management of Cellulitis (#5086)

Time Period: October 1, 2011 - September 30, 2012

Denom=All Admit w/Prim Diagnosis of Cellulitis, Num=Stay >=5 days

Chart created: Wednesday, 28NOV2012

Hospital=YK Health - Alaska



Subgroup Sizes: Min n = 1 Max n = 7

Source: ORYX2.rate5086

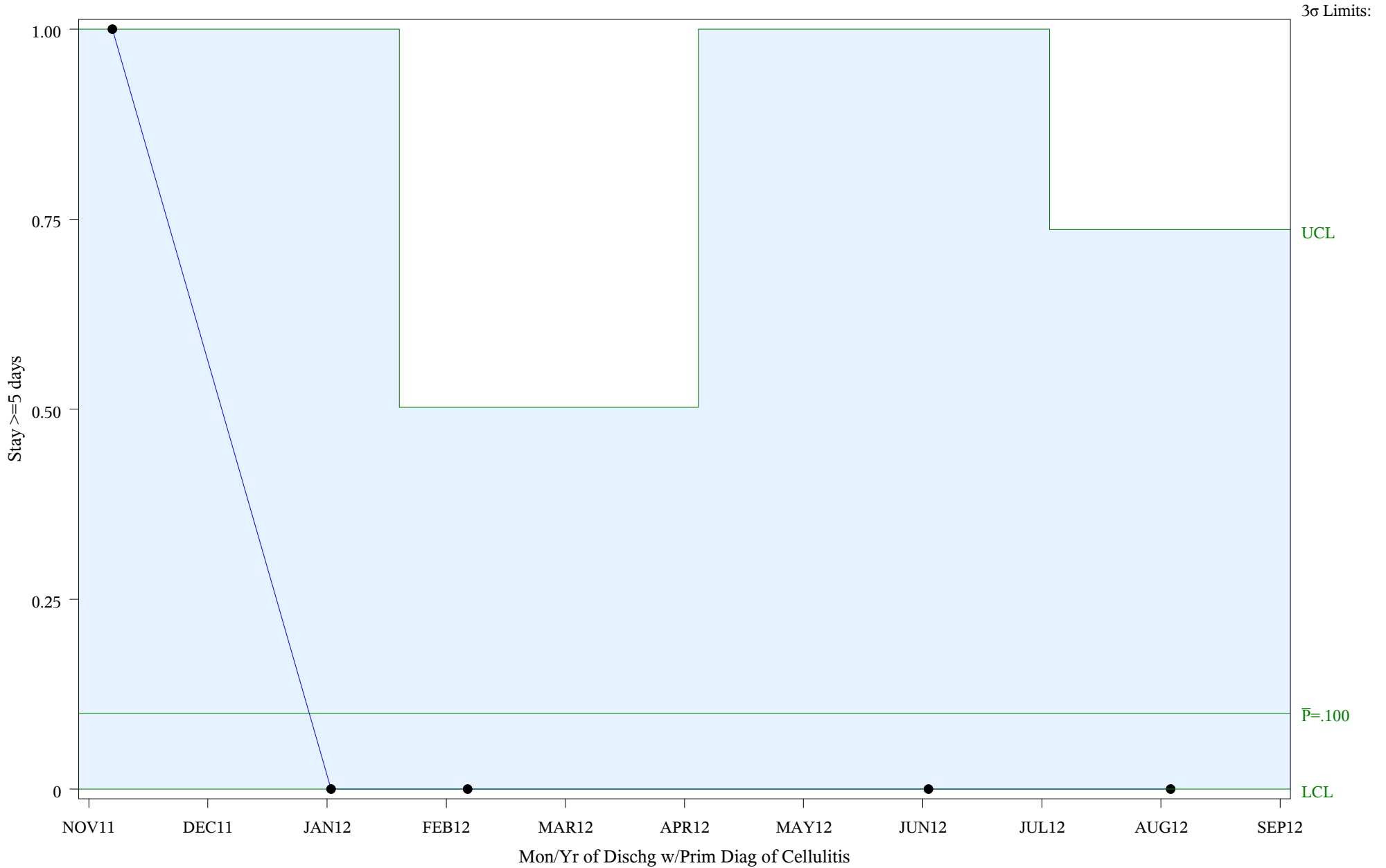
P Chart for Medical Management of Cellulitis (#5086)

Time Period: October 1, 2011 - September 30, 2012

Denom=All Admit w/Prim Diagnosis of Cellulitis, Num=Stay >=5 days

Chart created: Wednesday, 28NOV2012

Hospital=Maniilaq - Alaska



Subgroup Sizes: Min n = 1 Max n = 5

Source: ORYX2.rate5086

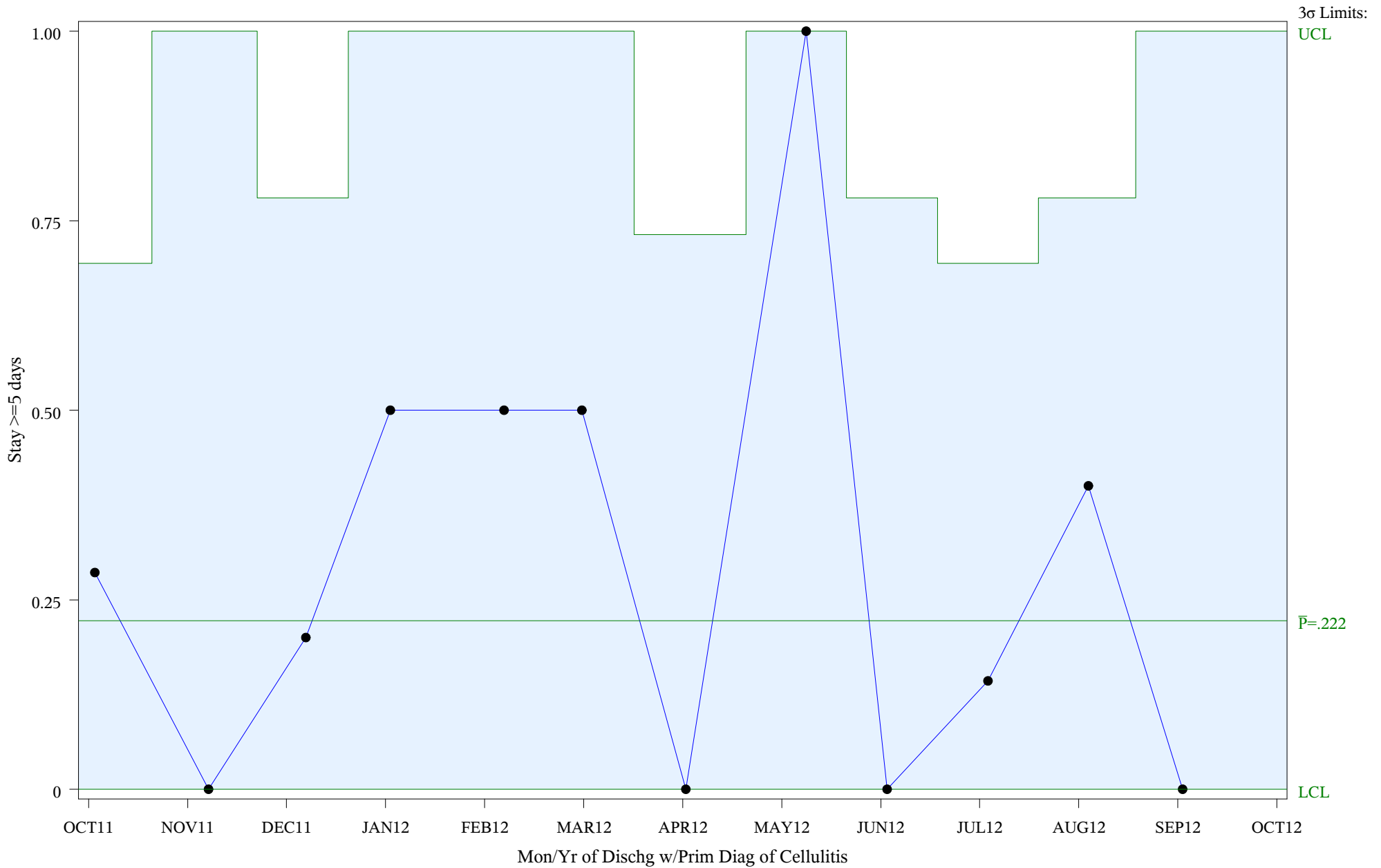
P Chart for Medical Management of Cellulitis (#5086)

Time Period: October 1, 2011 - September 30, 2012

Denom=All Admit w/Prim Diagnosis of Cellulitis, Num=Stay >=5 days

Chart created: Wednesday, 28NOV2012

Hospital=Shiprock - Navajo



Subgroup Sizes: Min n = 1 Max n = 7

Source: ORYX2.rate5086