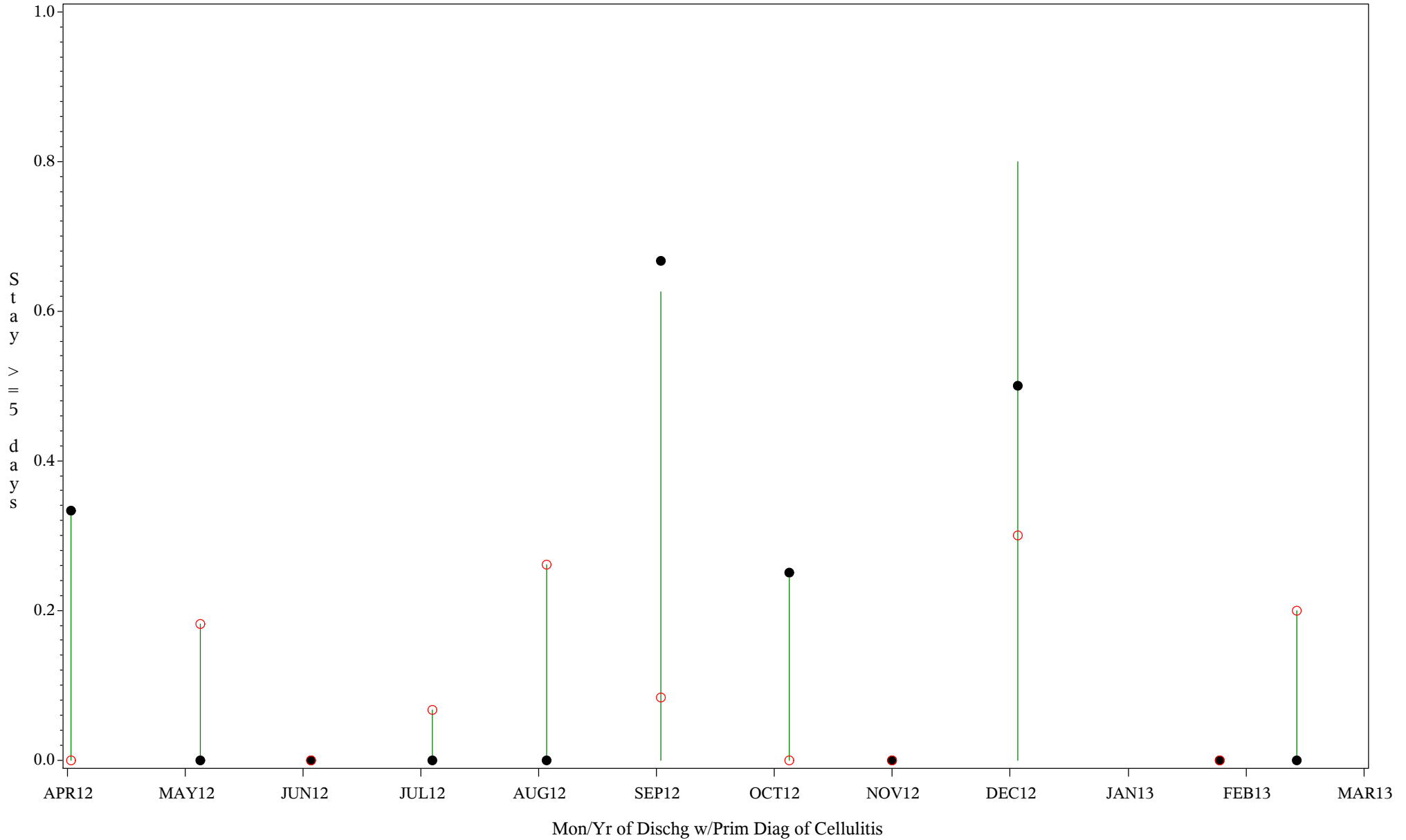


Comp Chrt for Medical Mgmt of Cellulitis (#5086)
Time Period: April 1, 2012 - March 31, 2013
Denom=All Admit w/Prim Diagnosis of Cellulitis, Num=Stay >=5 days
Chart created: Friday, 31MAY2013
 Hospital=Quentin N Burdick - Aberdeen



PLOT ● Organization's Observed Rate ○ Expected Rate-Comparison Group

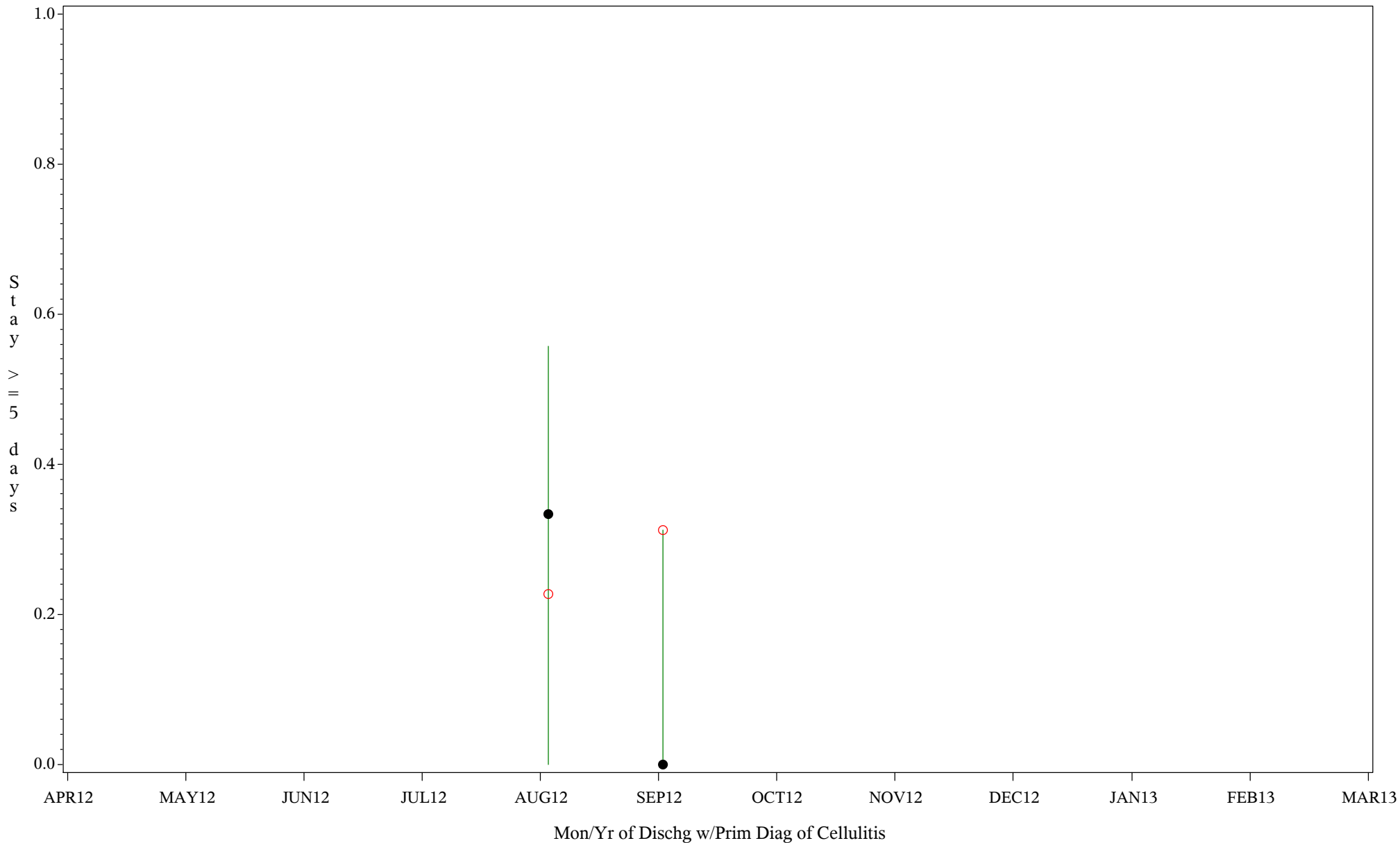
Comp Chrt for Medical Mgmt of Cellulitis (#5086)

Time Period: April 1, 2012 - March 31, 2013

Denom=All Admit w/Prim Diagnosis of Cellulitis, Num=Stay >=5 days

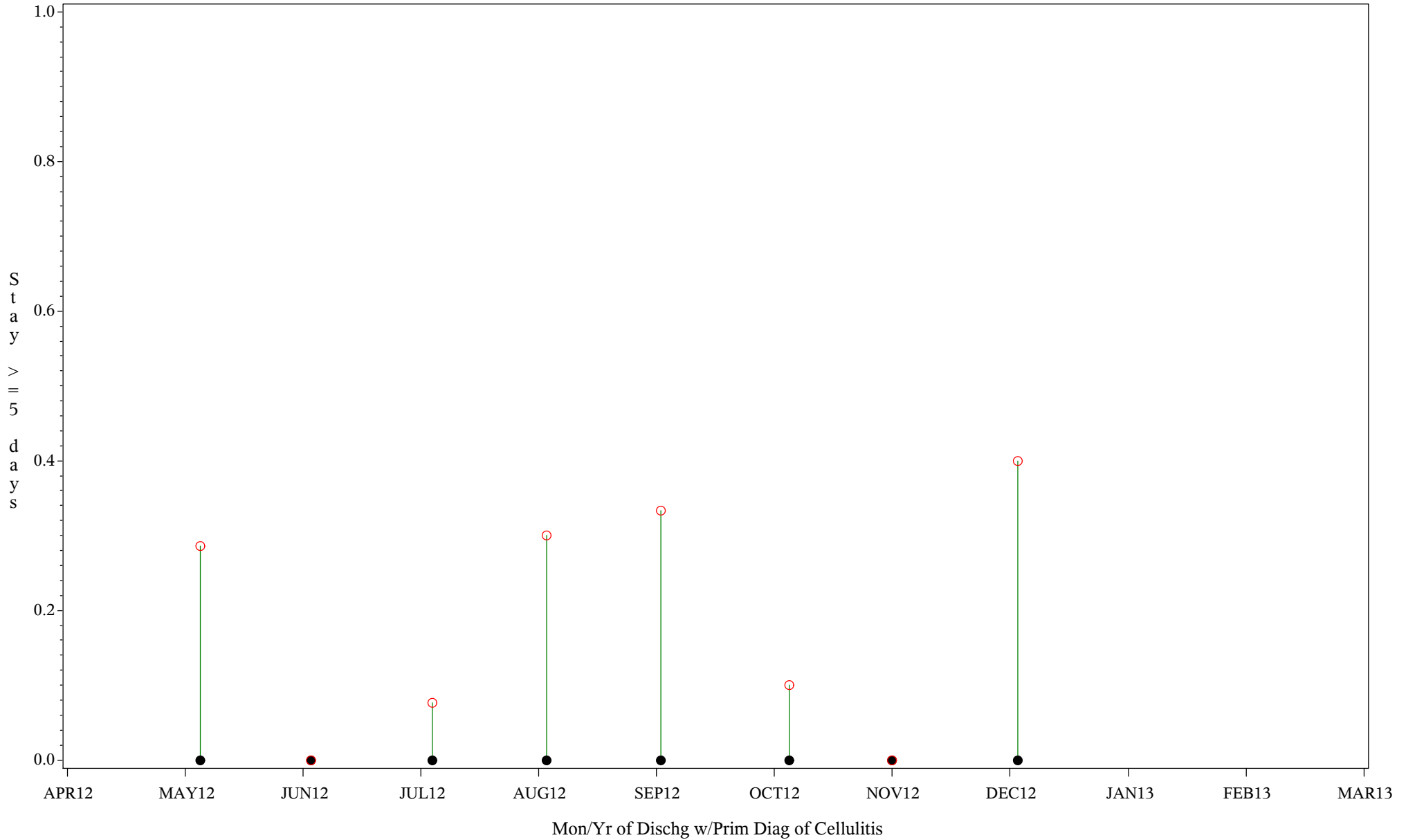
Chart created: Friday, 31MAY2013

Hospital=Zuni - Albuquerque



PLOT ● Organization's Observed Rate ○ Expected Rate-Comparison Group

Comp Chrt for Medical Mgmt of Cellulitis (#5086)
Time Period: April 1, 2012 - March 31, 2013
Denom=All Admit w/Prim Diagnosis of Cellulitis, Num=Stay >=5 days
Chart created: Friday, 31MAY2013
 Hospital=YK Health - Alaska



PLOT ● Organization's Observed Rate ○ Expected Rate-Comparison Group

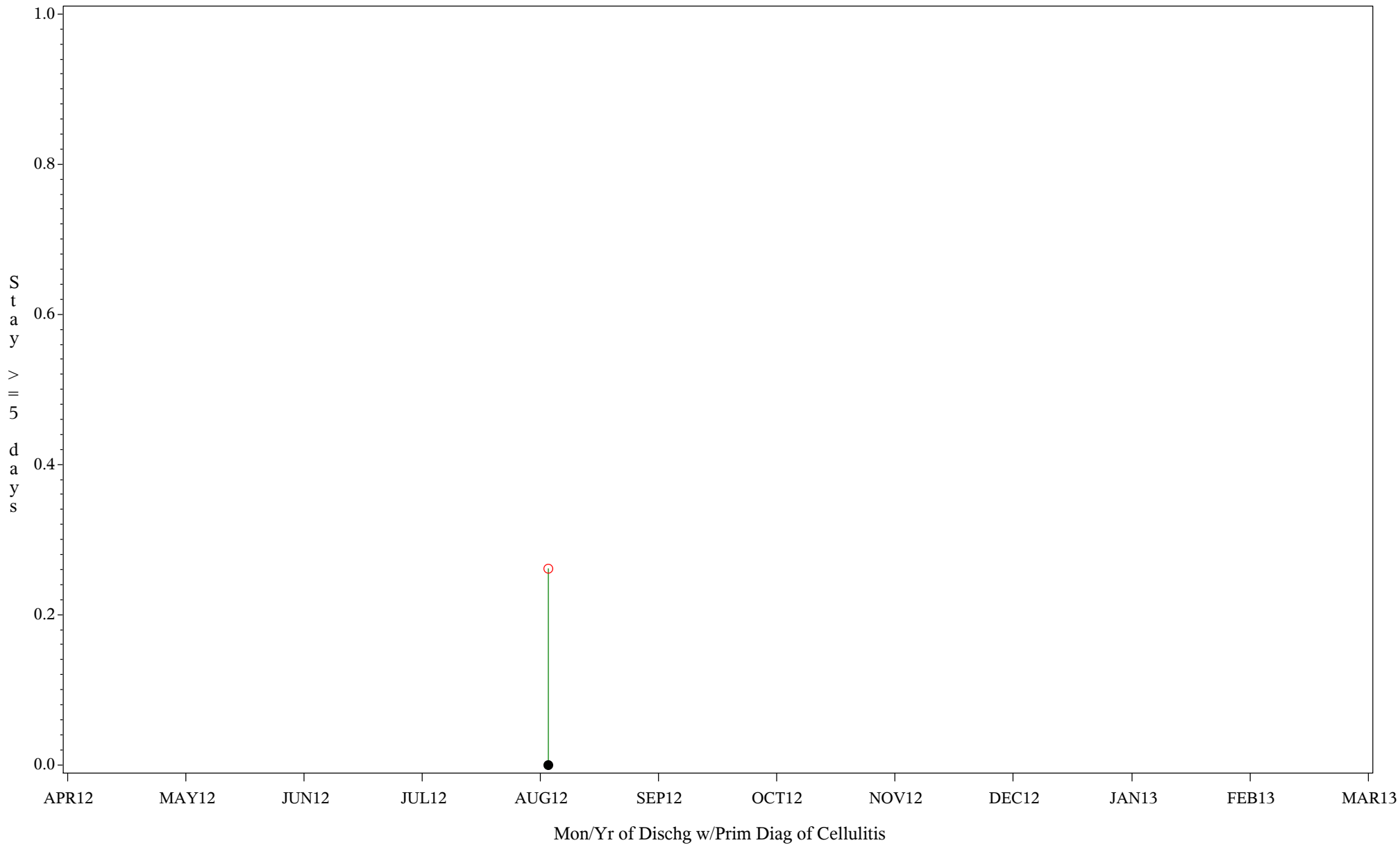
Comp Chrt for Medical Mgmt of Cellulitis (#5086)

Time Period: April 1, 2012 - March 31, 2013

Denom=All Admit w/Prim Diagnosis of Cellulitis, Num=Stay >=5 days

Chart created: Friday, 31MAY2013

Hospital=Maniilaq - Alaska



PLOT ● Organization's Observed Rate ○ Expected Rate-Comparison Group

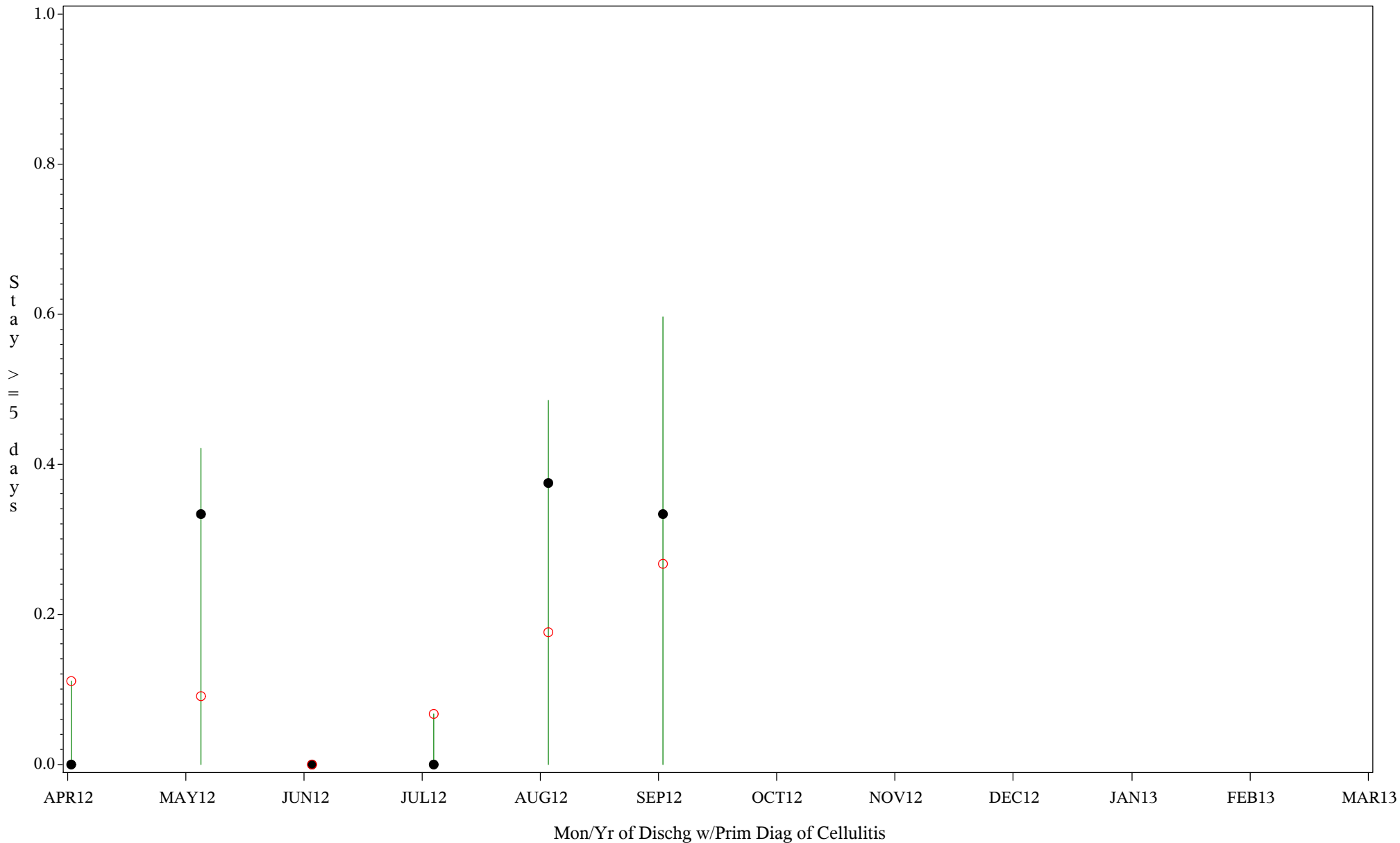
Comp Chrt for Medical Mgmt of Cellulitis (#5086)

Time Period: April 1, 2012 - March 31, 2013

Denom=All Admit w/Prim Diagnosis of Cellulitis, Num=Stay >=5 days

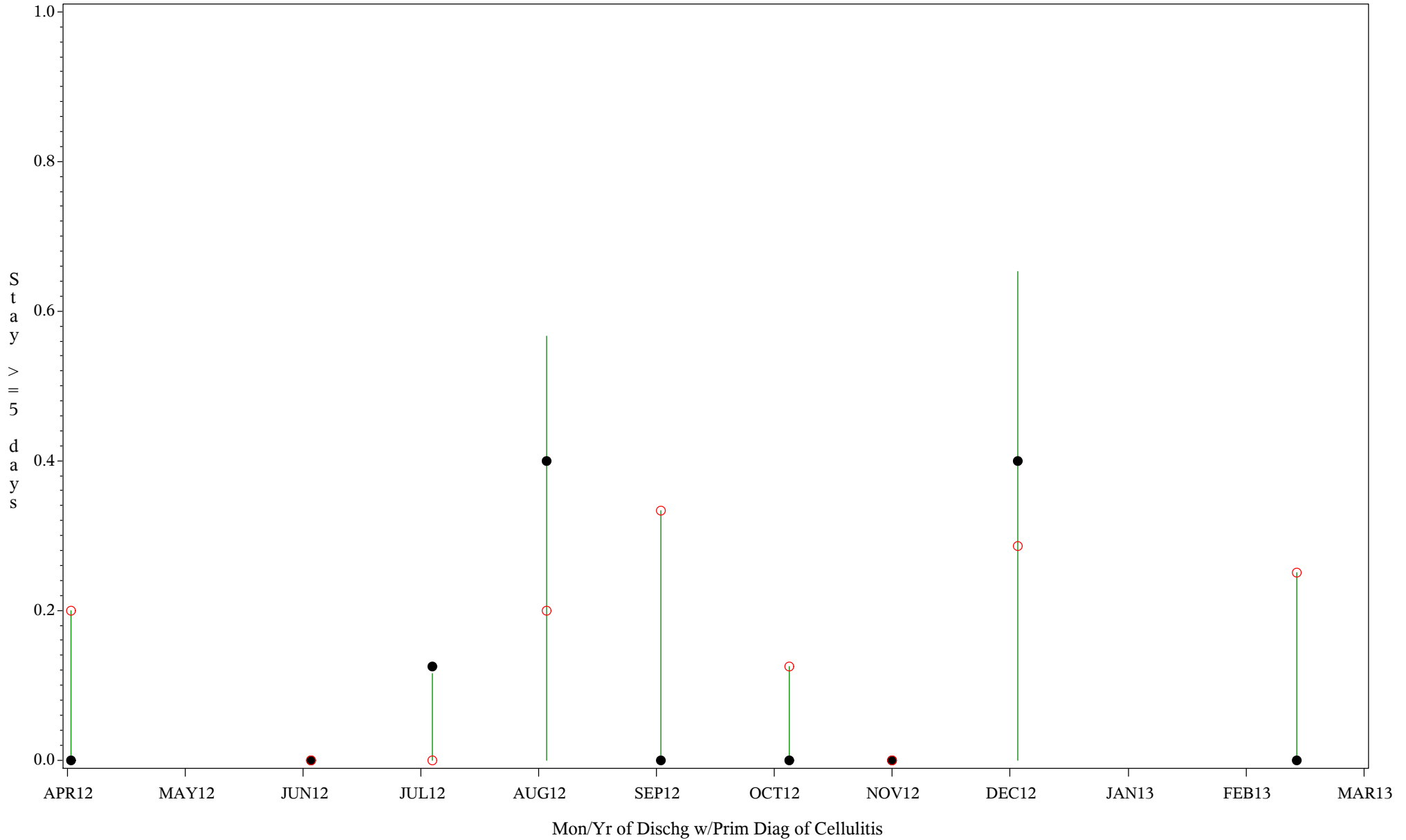
Chart created: Friday, 31MAY2013

Hospital=Chickasaw Hospital - Oklahoma



PLOT ● Organization's Observed Rate ○ Expected Rate-Comparison Group

Comp Chrt for Medical Mgmt of Cellulitis (#5086)
Time Period: April 1, 2012 - March 31, 2013
Denom=All Admit w/Prim Diagnosis of Cellulitis, Num=Stay >=5 days
Chart created: Friday, 31MAY2013
 Hospital=Shiprock - Navajo



PLOT ● Organization's Observed Rate ○ Expected Rate-Comparison Group