

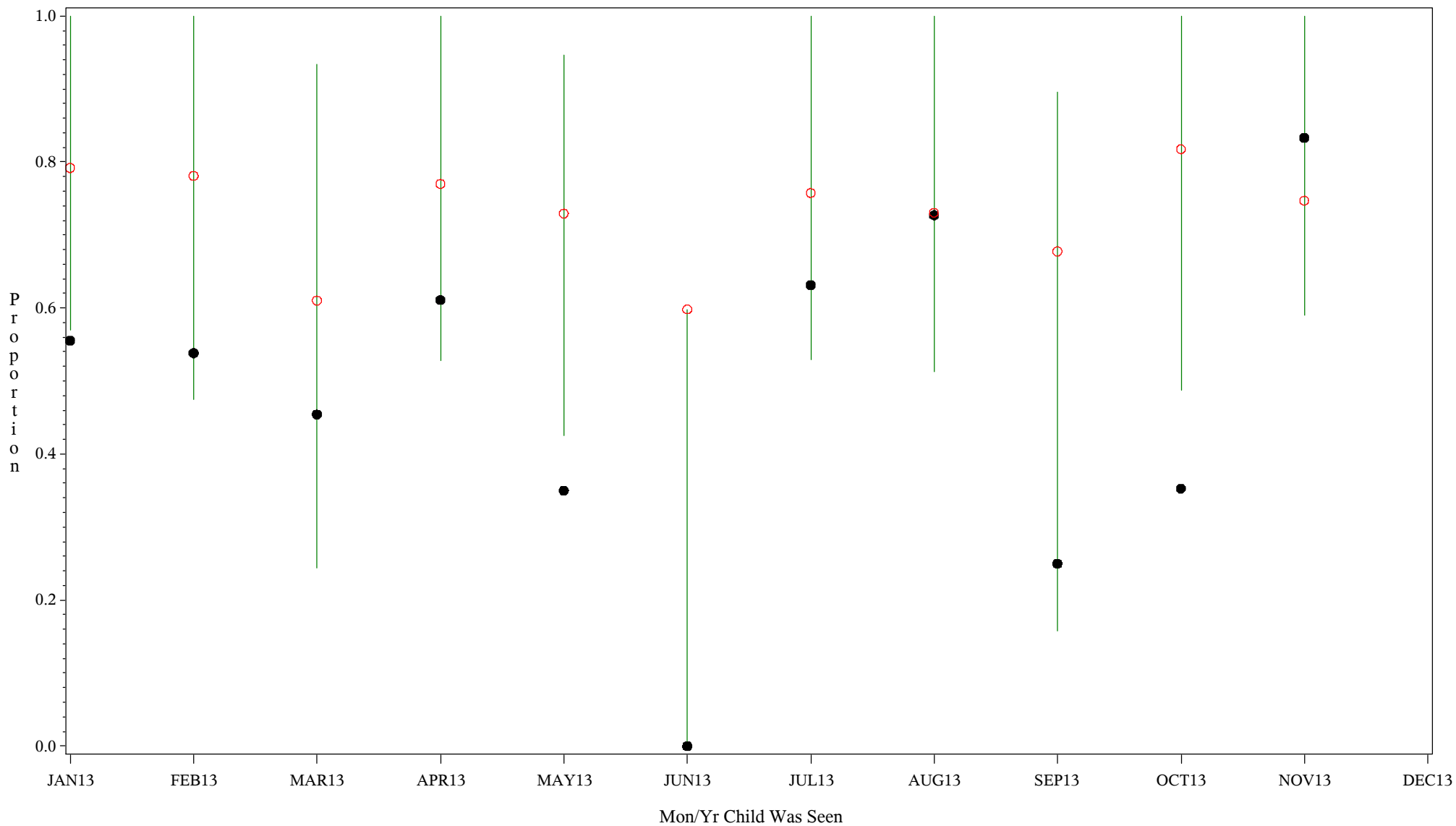
# Comp Chart for Up-to-Date Immuniz (HEPB) (# 15828-5133)

Time Period: January 1, 2013 - December 31, 2013

Denominator=Children 16-18 months, Numerator=Up-to-Date Shots

Chart created: Thursday, 30JAN2014

hospital=Sells - Tucson



PLOT ● Organization's Observed Rate ○ Expected Rate-Comparison Group

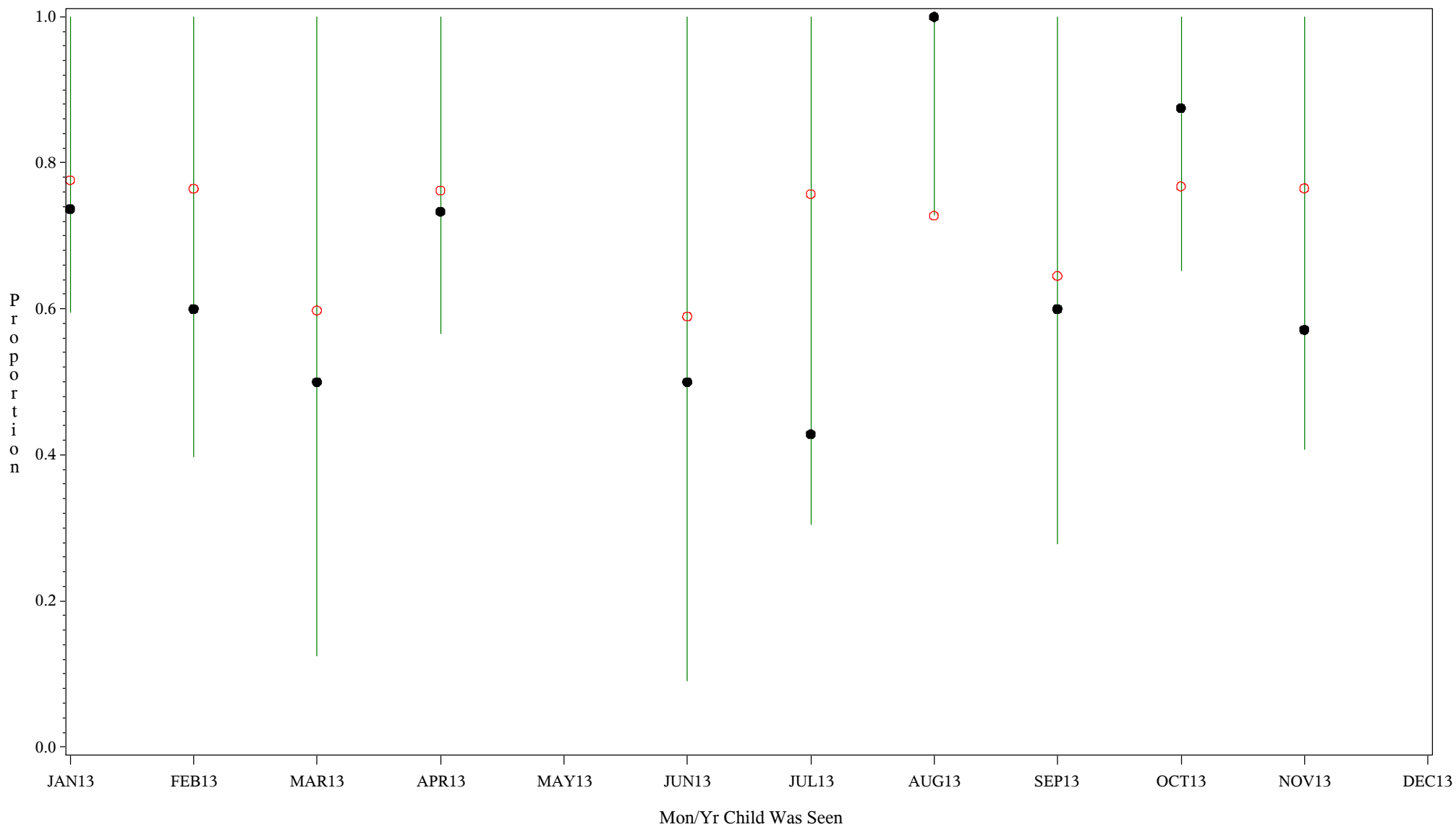
## Comp Chart for Up-to-Date Immuniz (HEPB) (# 15828-5133)

Time Period: January 1, 2013 - December 31, 2013

Denominator=Children 16-18 months, Numerator=Up-to-Date Shots

Chart created: Thursday, 30JAN2014

hospital=Winnebago - Aberdeen



PLOT ● Organization's Observed Rate ○ Expected Rate-Comparison Group

Source: ORYX2.rate5133

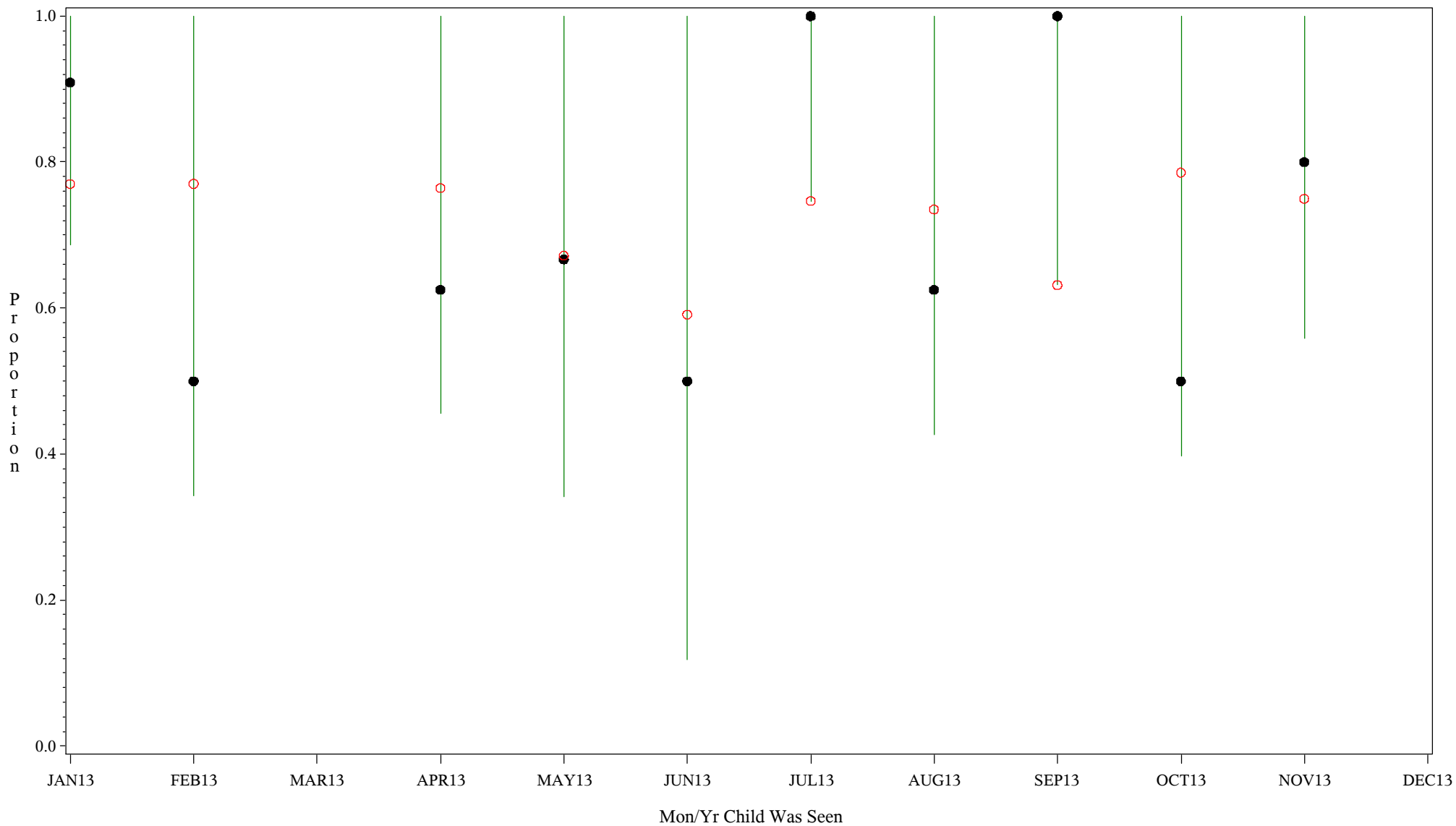
## Comp Chart for Up-to-Date Immuniz (HEPB) (# 15828-5133)

Time Period: January 1, 2013 - December 31, 2013

Denominator=Children 16-18 months, Numerator=Up-to-Date Shots

Chart created: Thursday, 30JAN2014

hospital=Mescalero - Albuquerque



PLOT ● Organization's Observed Rate ○ Expected Rate-Comparison Group

Source: ORYX2.rate5133

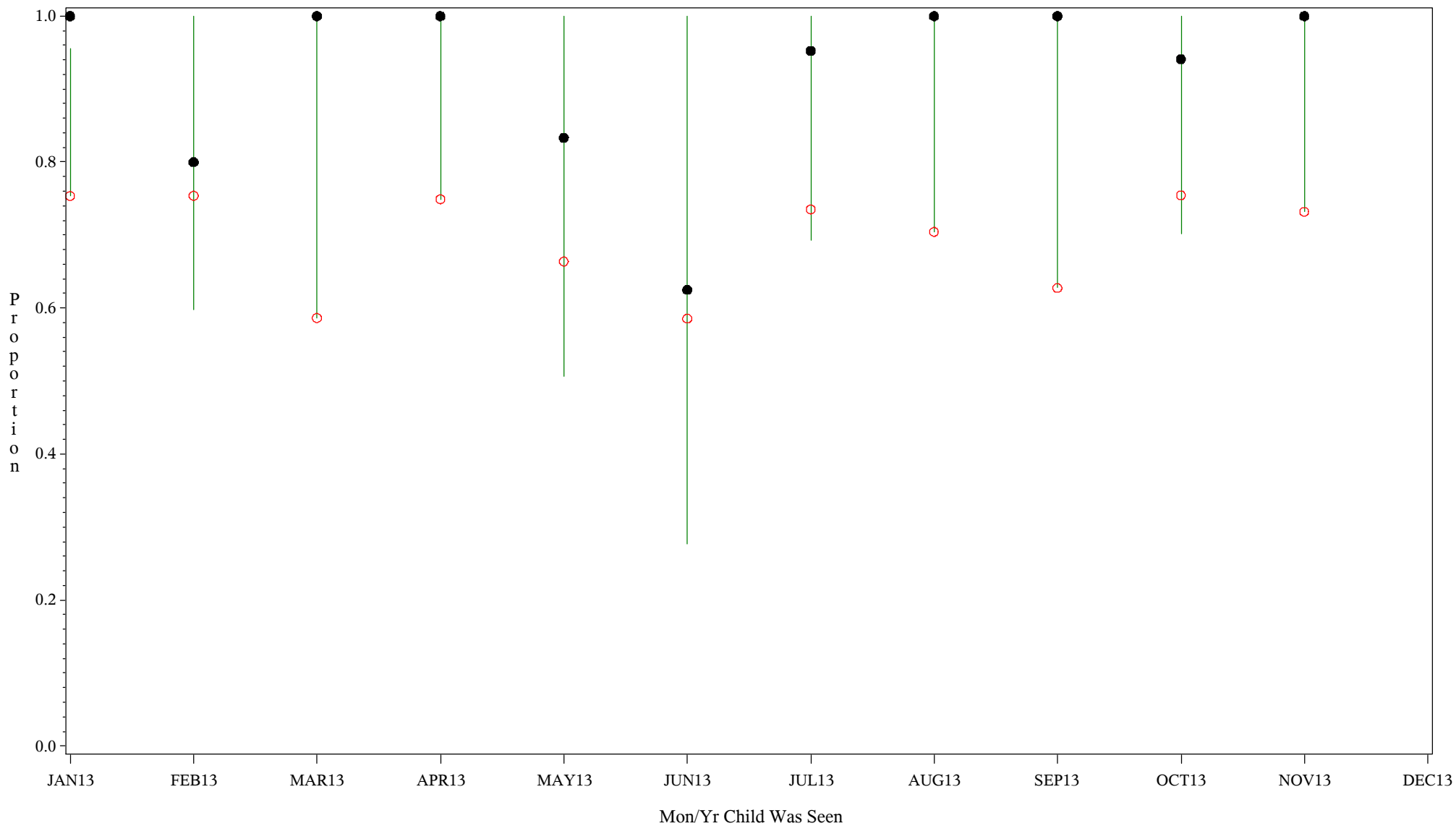
## Comp Chart for Up-to-Date Immuniz (HEPB) (# 15828-5133)

Time Period: January 1, 2013 - December 31, 2013

Denominator=Children 16-18 months, Numerator=Up-to-Date Shots

Chart created: Thursday, 30JAN2014

hospital=Zuni - Albuquerque



PLOT ● Organization's Observed Rate ○ Expected Rate-Comparison Group

Source: ORYX2.rate5133

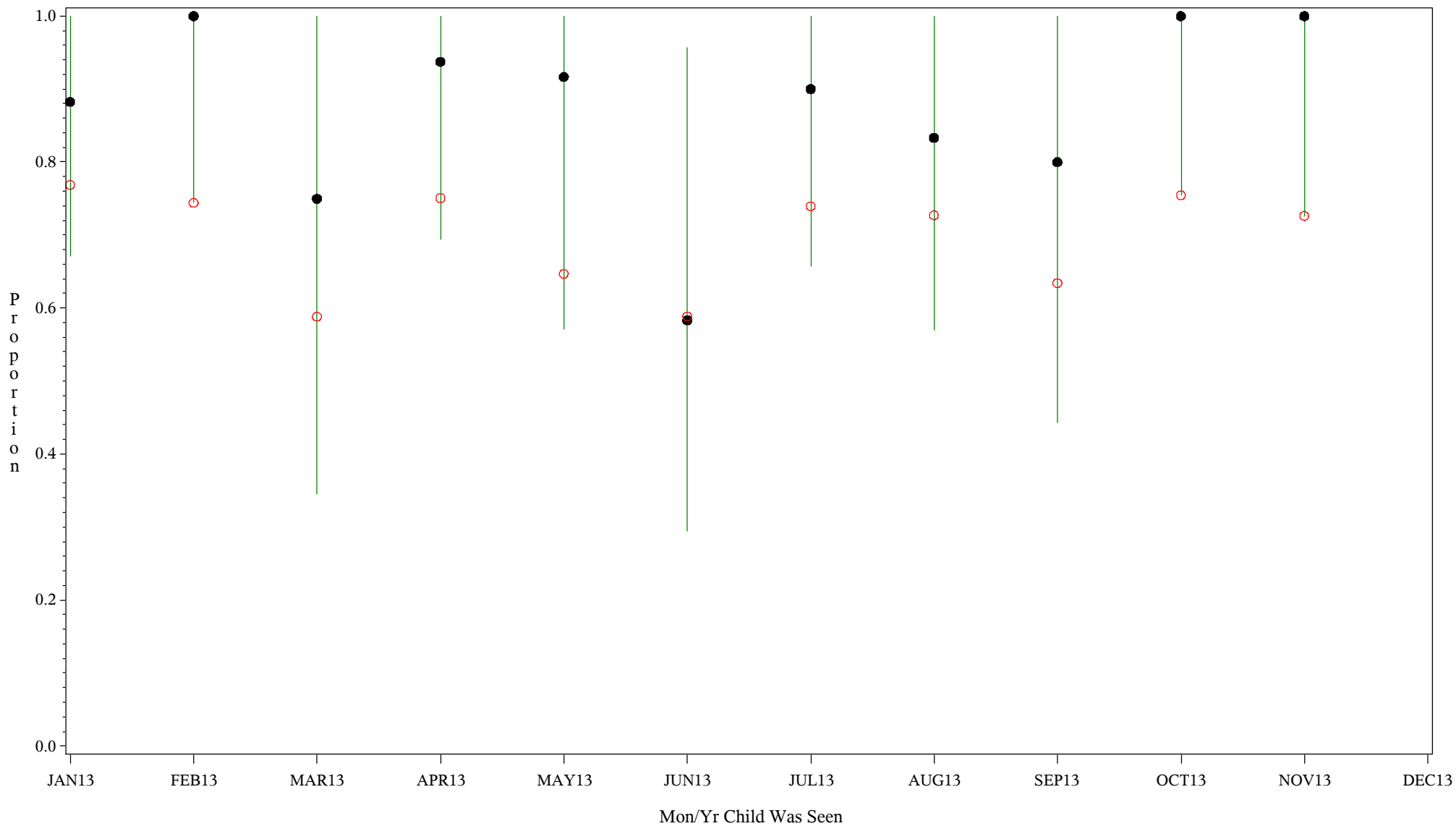
## Comp Chart for Up-to-Date Immuniz (HEPB) (# 15828-5133)

Time Period: January 1, 2013 - December 31, 2013

Denominator=Children 16-18 months, Numerator=Up-to-Date Shots

Chart created: Thursday, 30JAN2014

hospital=Barrow - Alaska



PLOT ● Organization's Observed Rate ○ Expected Rate-Comparison Group

Source: ORYX2.rate5133

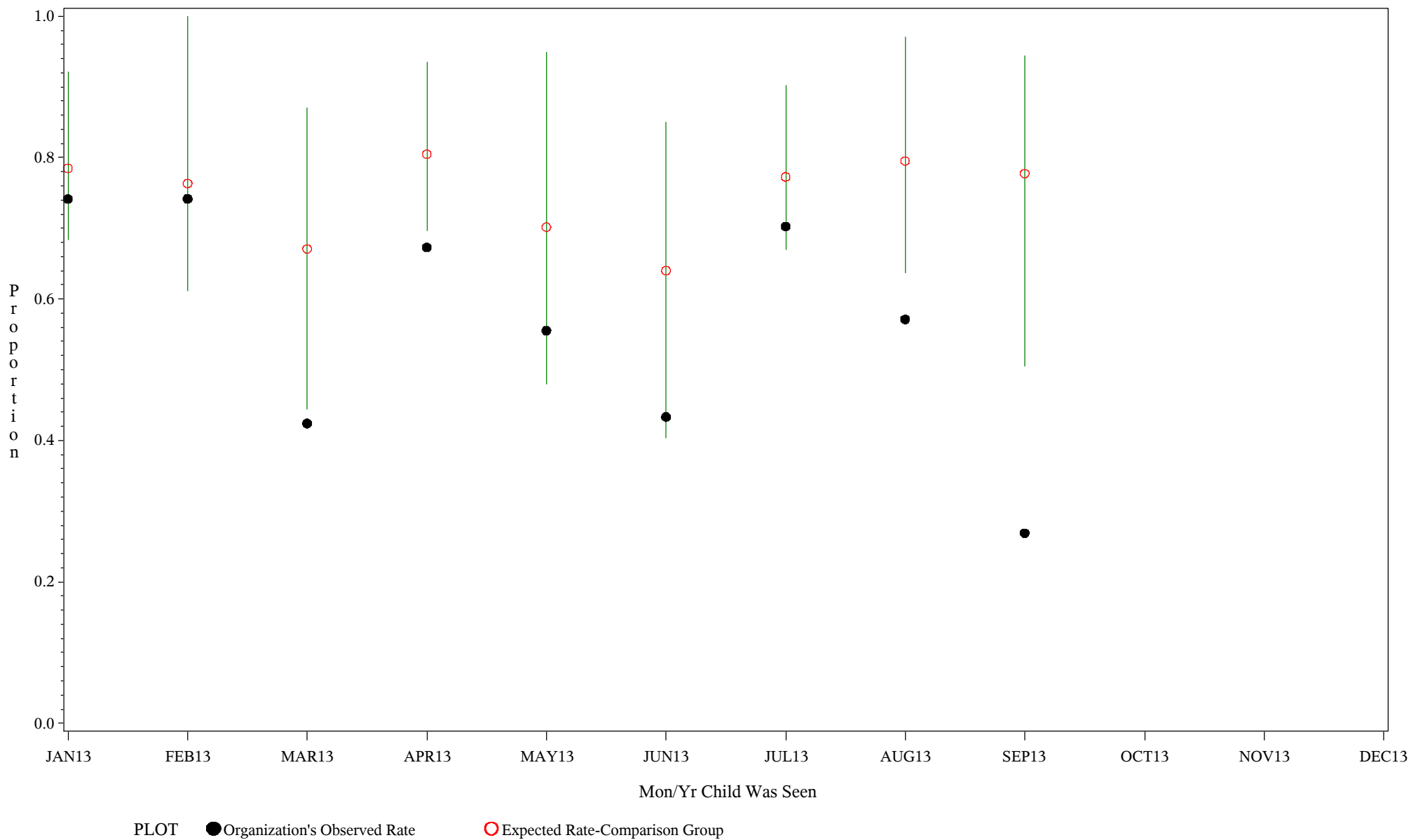
## Comp Chart for Up-to-Date Immuniz (HEPB) (# 15828-5133)

Time Period: January 1, 2013 - December 31, 2013

Denominator=Children 16-18 months, Numerator=Up-to-Date Shots

Chart created: Thursday, 30JAN2014

hospital=YK Health - Alaska



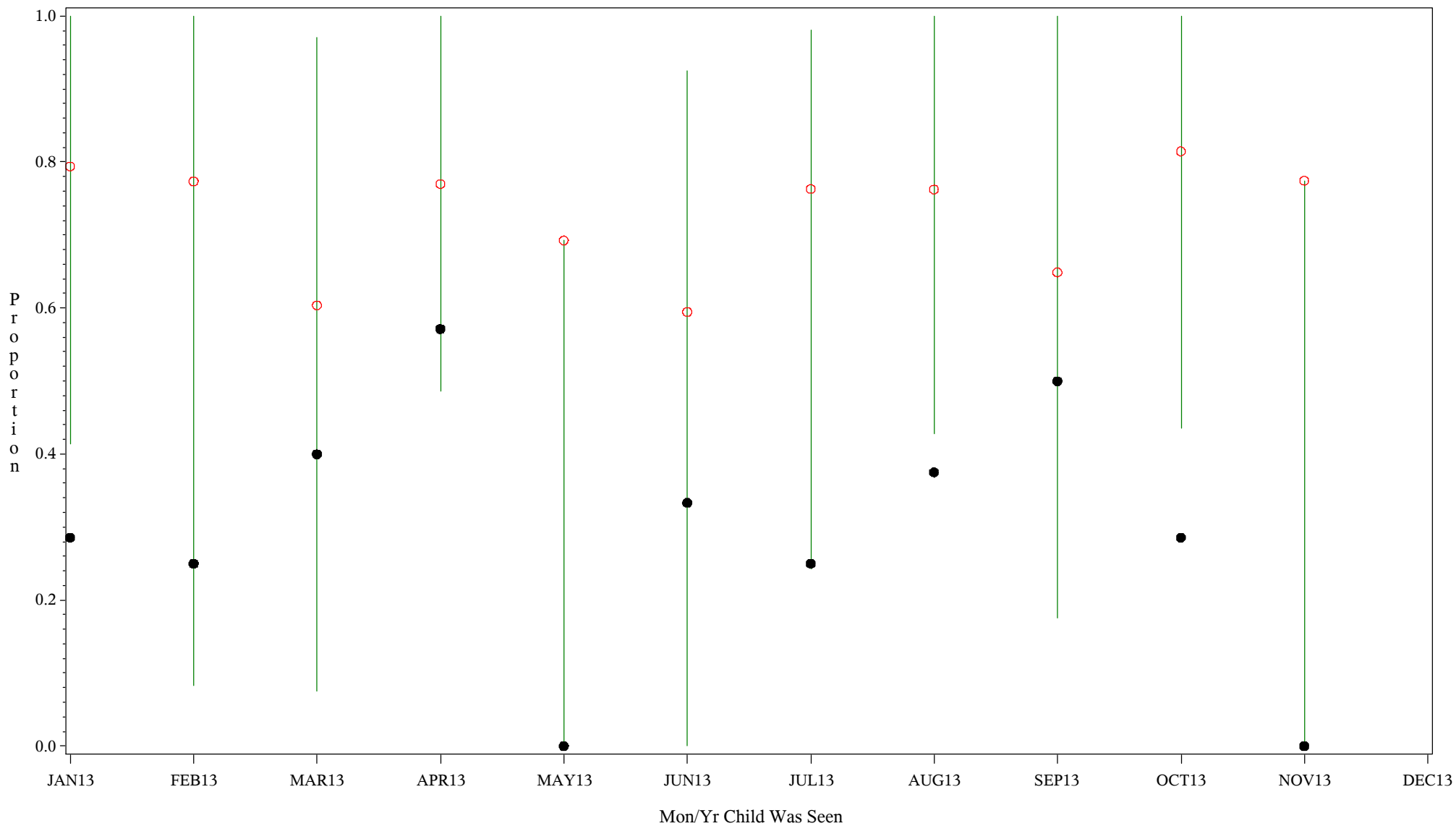
# Comp Chart for Up-to-Date Immuniz (HEPB) (# 15828-5133)

Time Period: January 1, 2013 - December 31, 2013

Denominator=Children 16-18 months, Numerator=Up-to-Date Shots

Chart created: Thursday, 30JAN2014

hospital=Maniilaq - Alaska



PLOT ● Organization's Observed Rate ○ Expected Rate-Comparison Group

Source: ORYX2.rate5133

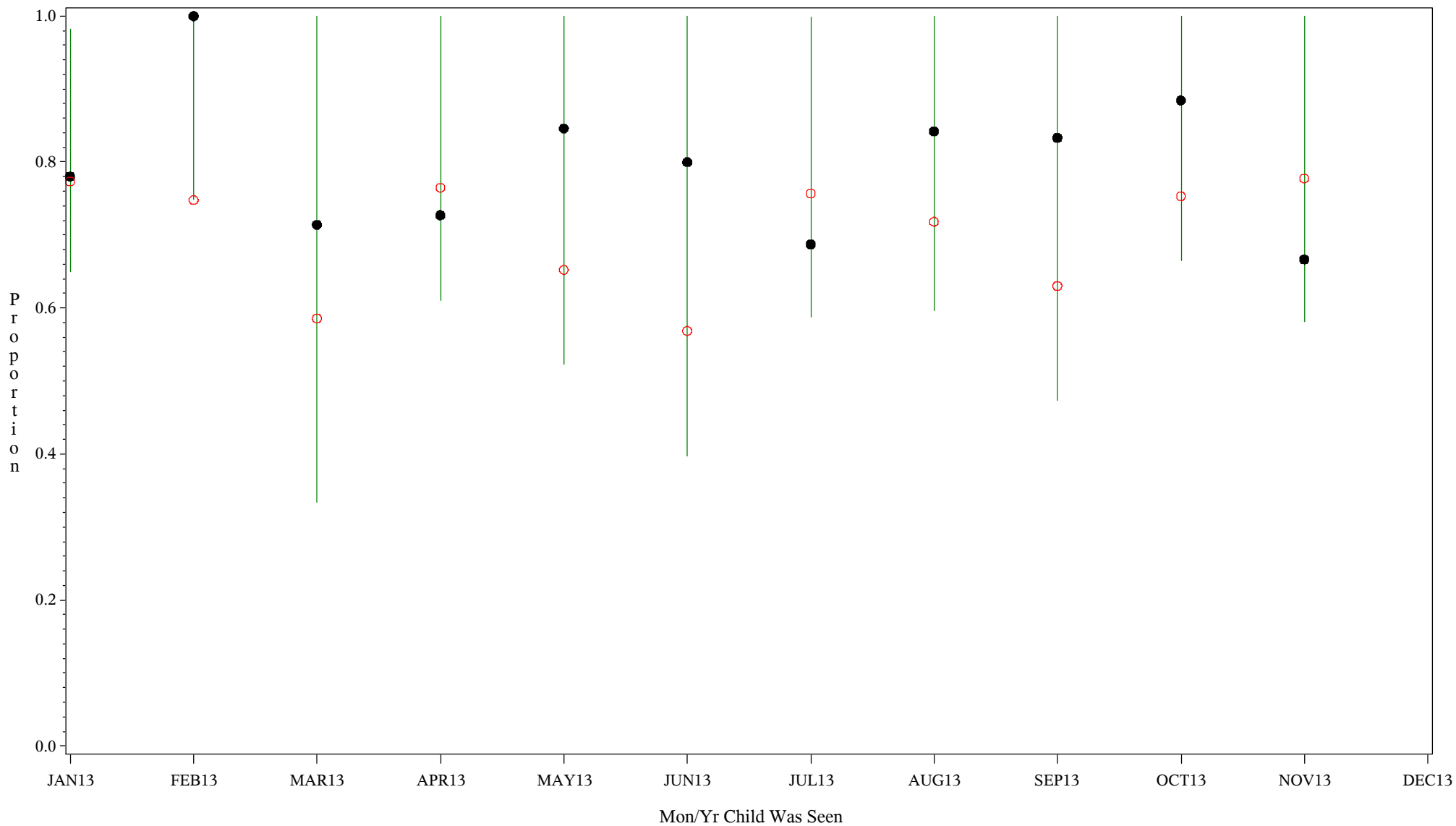
## Comp Chart for Up-to-Date Immuniz (HEPB) (# 15828-5133)

Time Period: January 1, 2013 - December 31, 2013

Denominator=Children 16-18 months, Numerator=Up-to-Date Shots

Chart created: Thursday, 30JAN2014

hospital=Choctaw Hosp - Nashville



PLOT ● Organization's Observed Rate ○ Expected Rate-Comparison Group

Source: ORYX2.rate5133



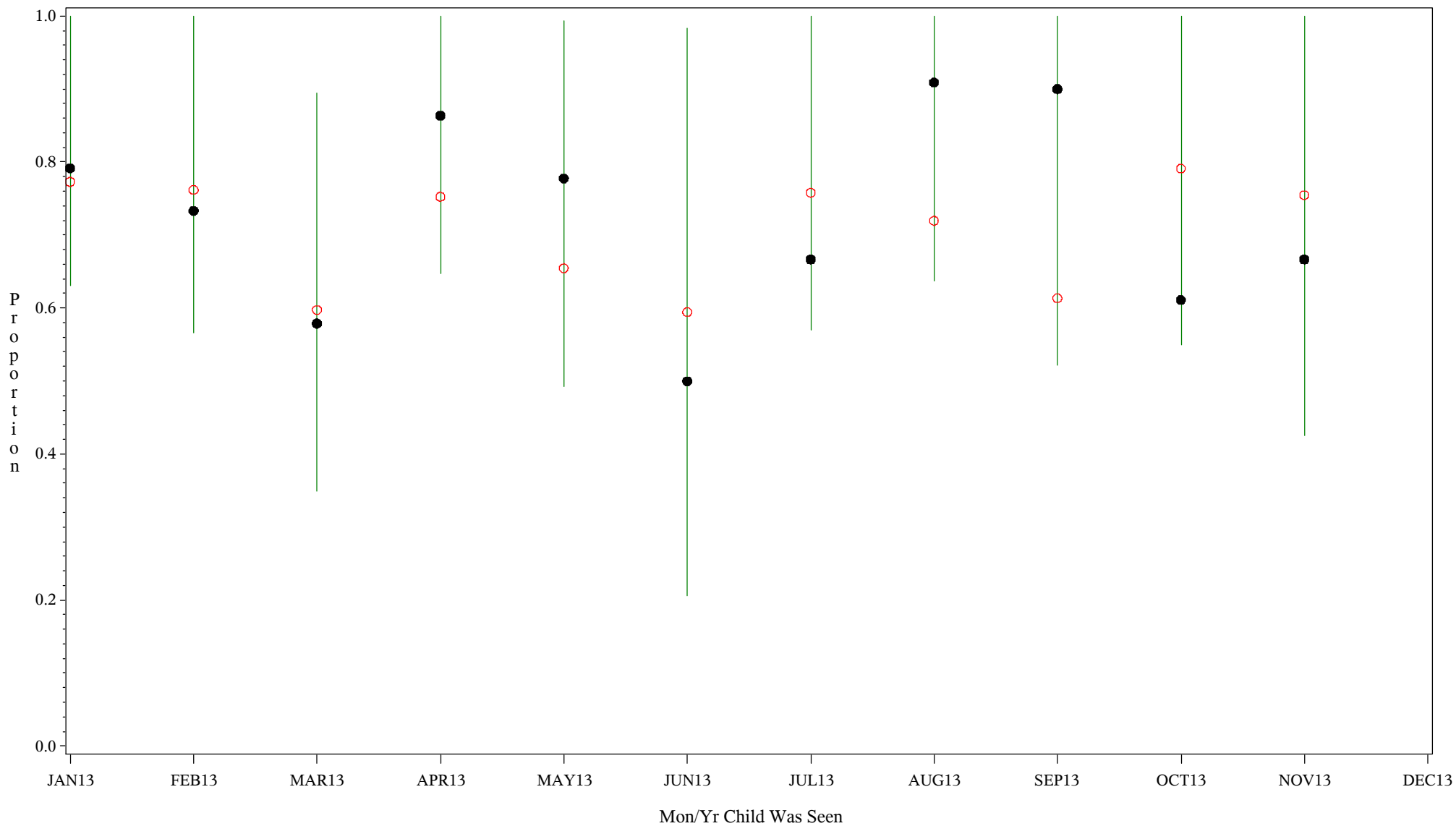
# Comp Chart for Up-to-Date Immuniz (HEPB) (# 15828-5133)

Time Period: January 1, 2013 - December 31, 2013

Denominator=Children 16-18 months, Numerator=Up-to-Date Shots

Chart created: Thursday, 30JAN2014

hospital=San Carlos - Phoenix



PLOT ● Organization's Observed Rate ○ Expected Rate-Comparison Group

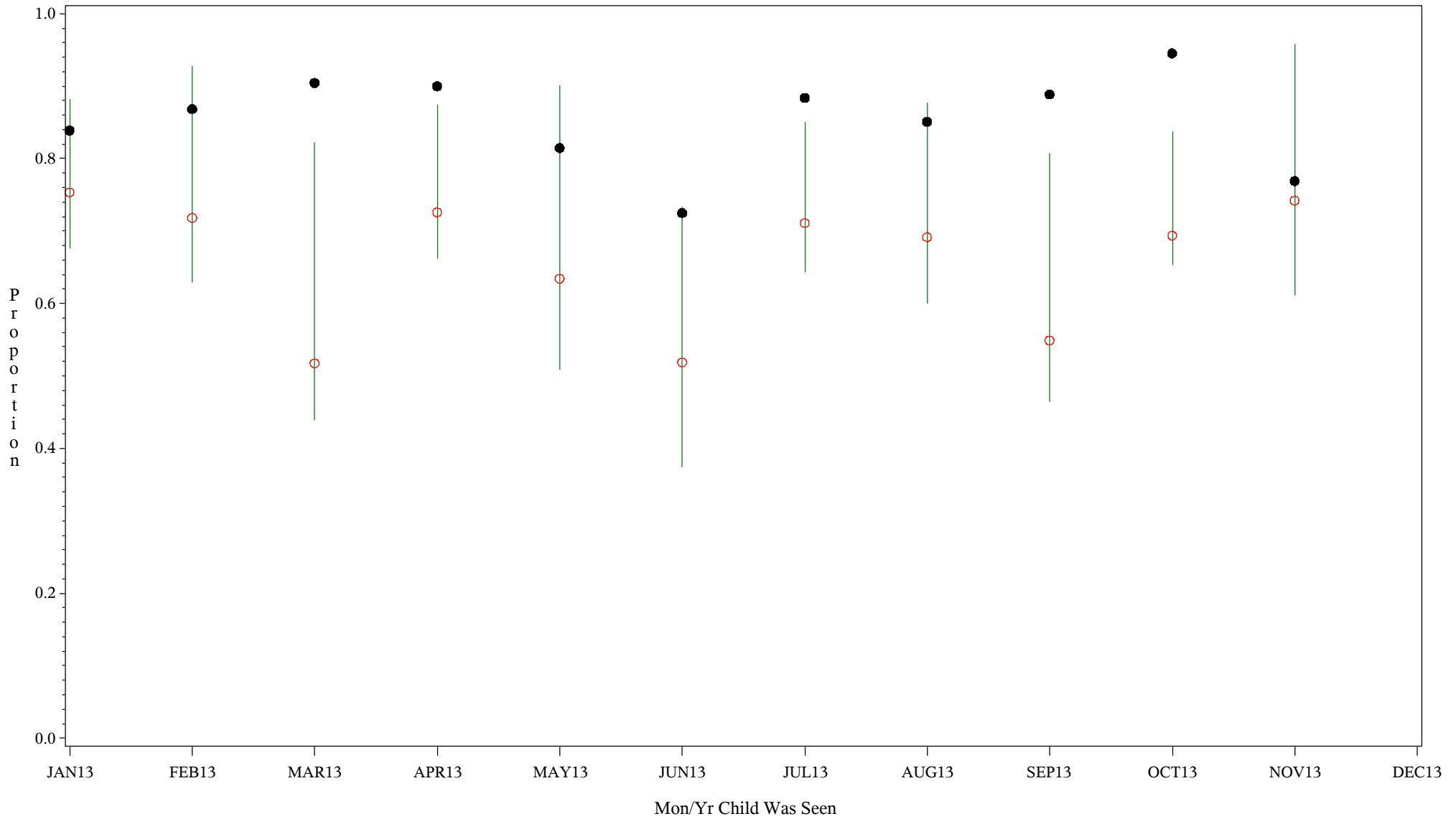
# Comp Chart for Up-to-Date Immuniz (HEPB) (# 15828-5133)

Time Period: January 1, 2013 - December 31, 2013

Denominator=Children 16-18 months, Numerator=Up-to-Date Shots

Chart created: Thursday, 30JAN2014

hospital=GIMC - Navajo



PLOT ● Organization's Observed Rate ○ Expected Rate-Comparison Group

Source: ORYX2.rate5133