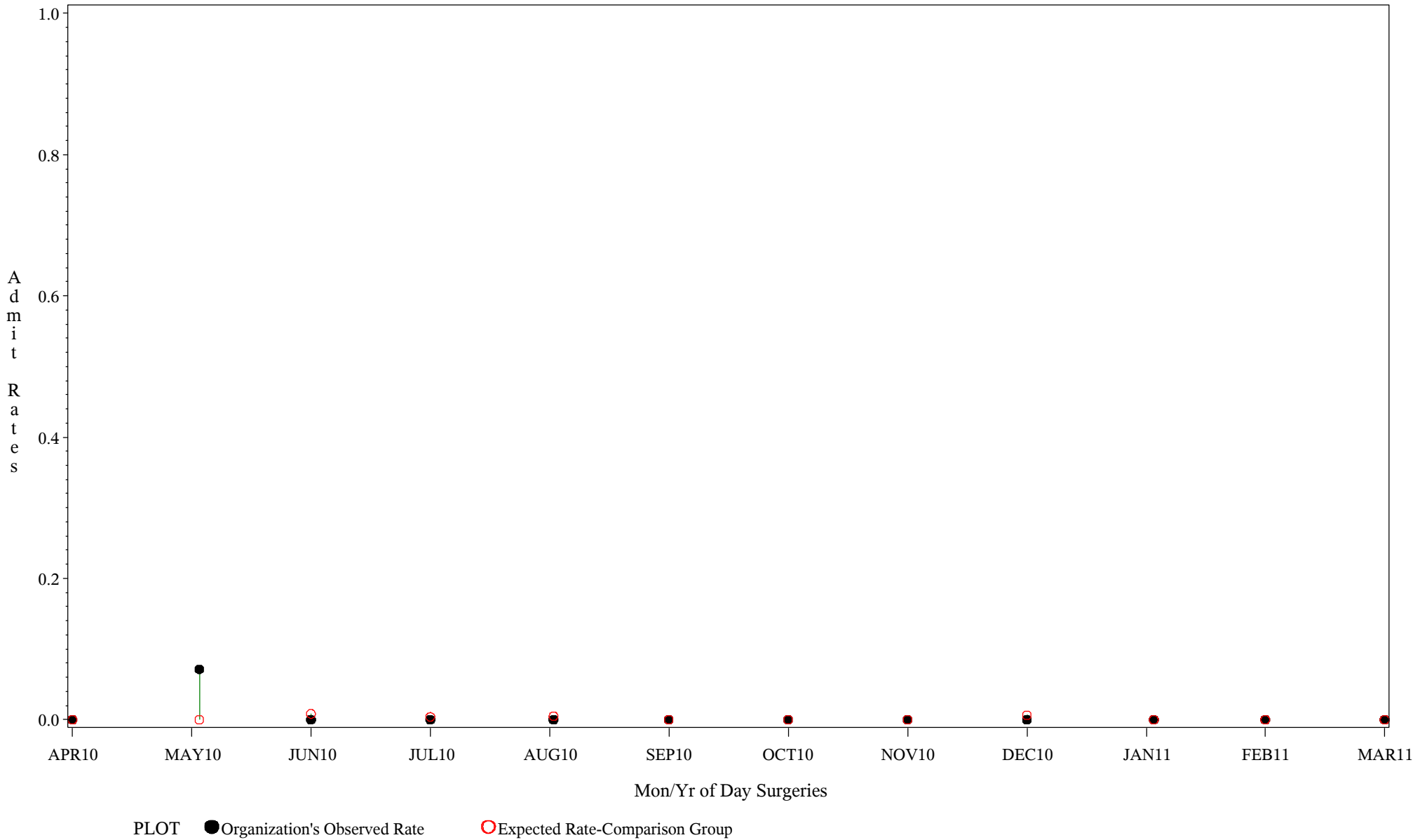


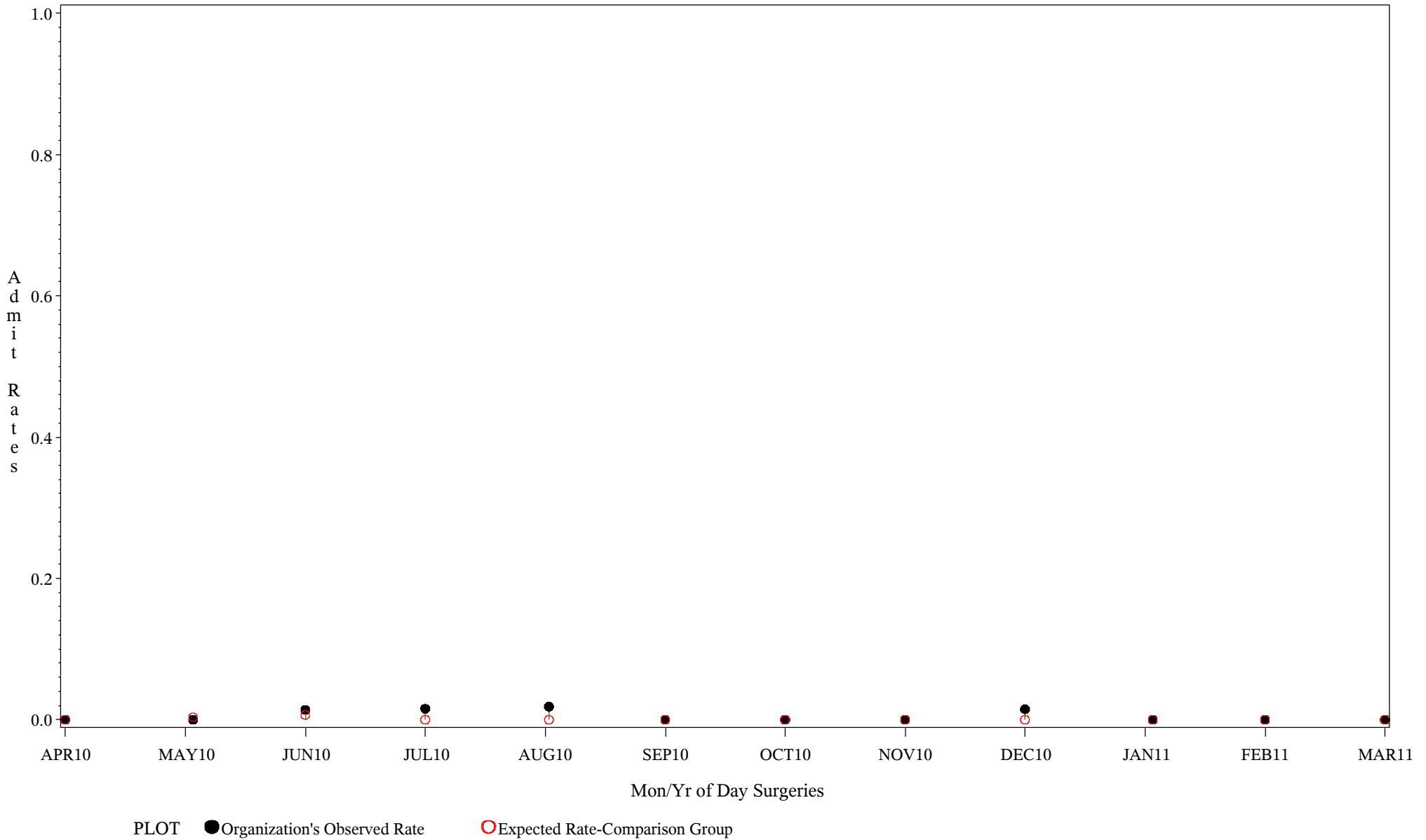
# Comp Chrt for Inpat Admit w/in 72 hrs After Surg (#5080)

Time Period: April 1, 2010 - March 31, 2011  
Denom=All Day Surgeries, Num=Inpatient Admit After Day Surgery  
Chart created: Wednesday, 18MAY2011  
Hospital=White River - Phoenix



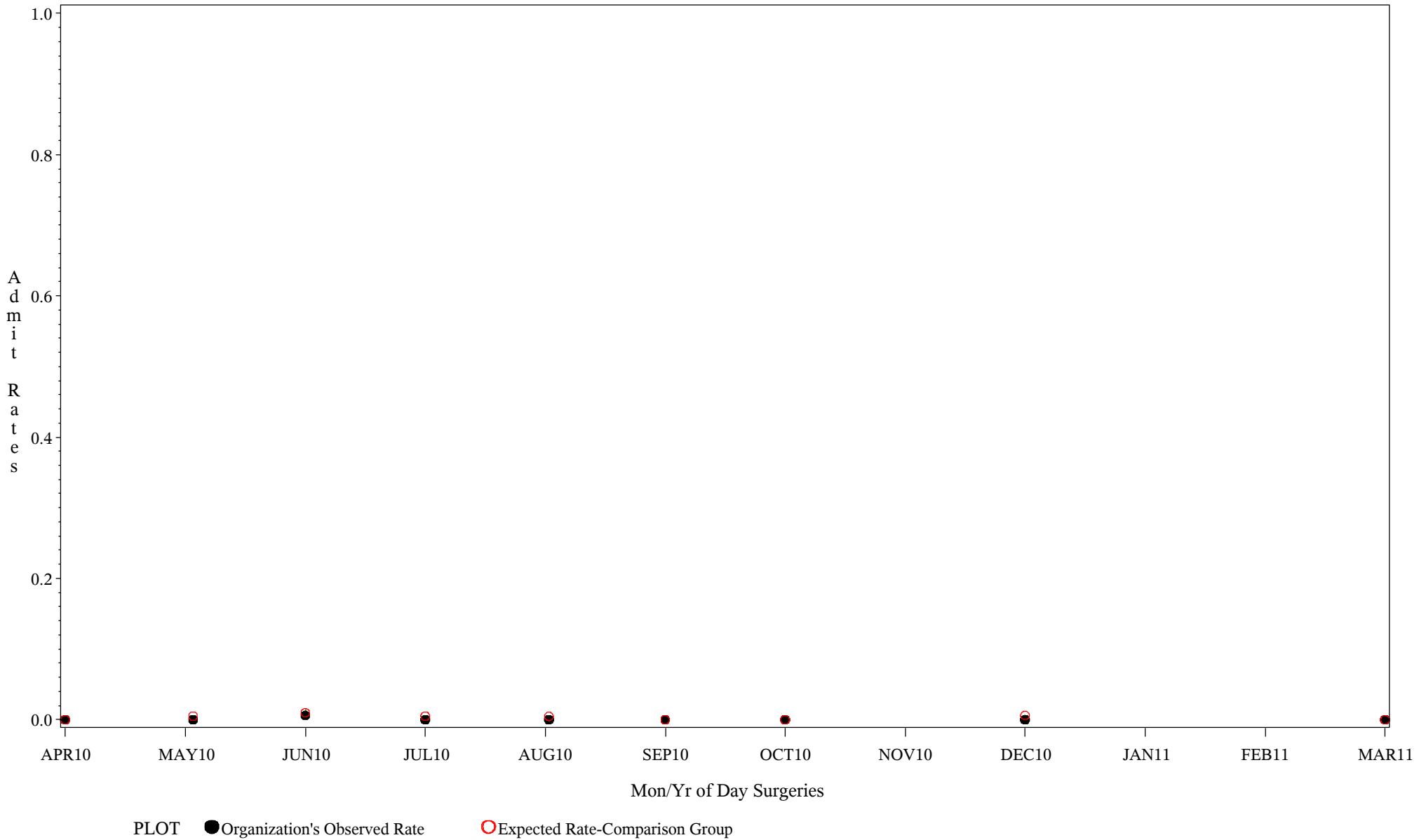
# Comp Chrt for Inpat Admit w/in 72 hrs After Surg (#5080)

Time Period: April 1, 2010 - March 31, 2011  
Denom=All Day Surgeries, Num=Inpatient Admit After Day Surgery  
Chart created: Wednesday, 18MAY2011  
Hospital=Chinle - Navajo



# Comp Chrt for Inpat Admit w/in 72 hrs After Surg (#5080)

Time Period: April 1, 2010 - March 31, 2011  
Denom=All Day Surgeries, Num=Inpatient Admit After Day Surgery  
Chart created: Wednesday, 18MAY2011  
Hospital=GIMC - Navajo



# Comp Chrt for Inpat Admit w/in 72 hrs After Surg (#5080)

Time Period: April 1, 2010 - March 31, 2011  
 Denom=All Day Surgeries, Num=Inpatient Admit After Day Surgery  
 Chart created: Wednesday, 18MAY2011  
 Hospital=Shiprock - Navajo

