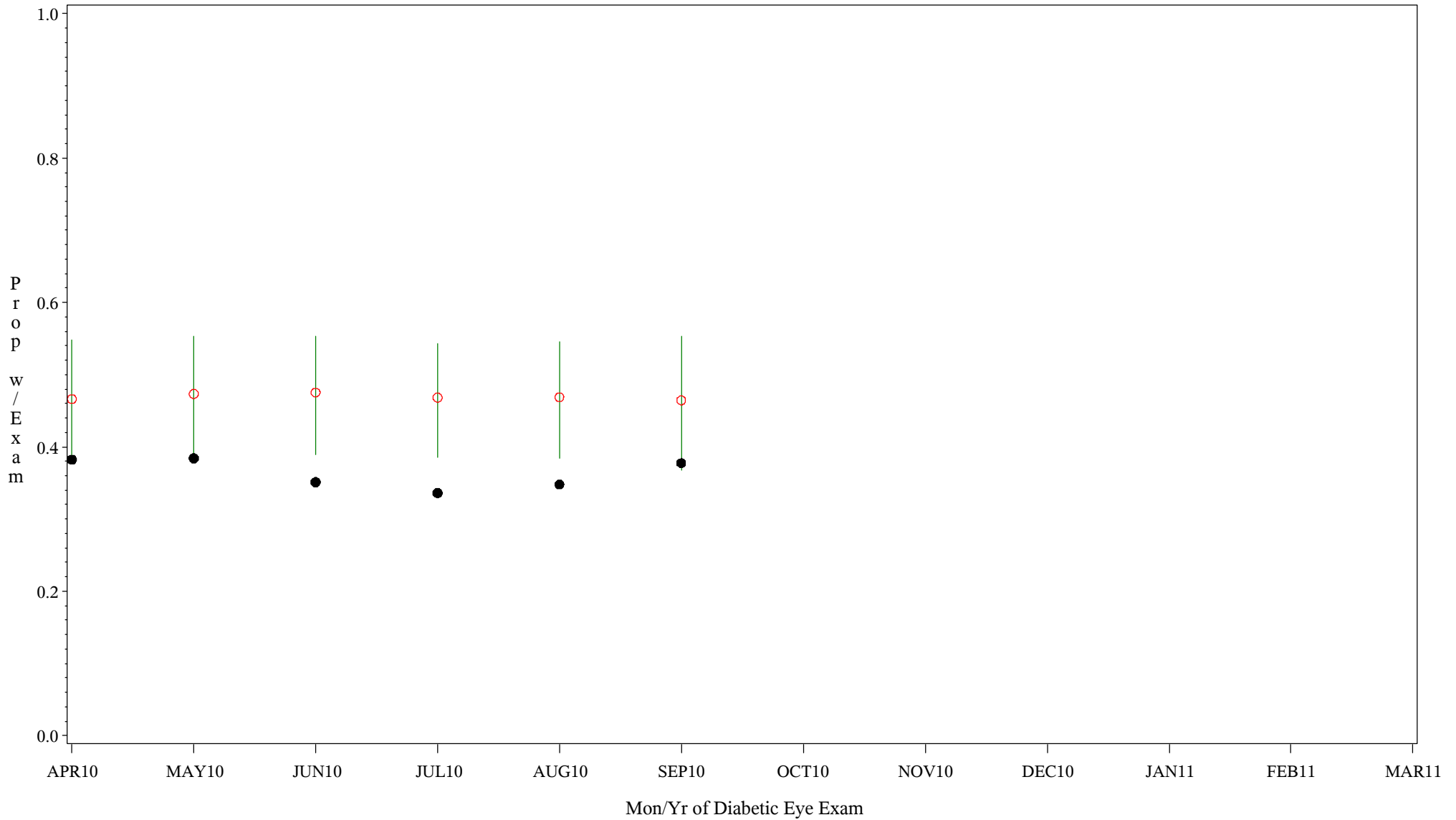


# Comp Chrt for Early Diagnosis of Diabetic Retinopathy (#5090)

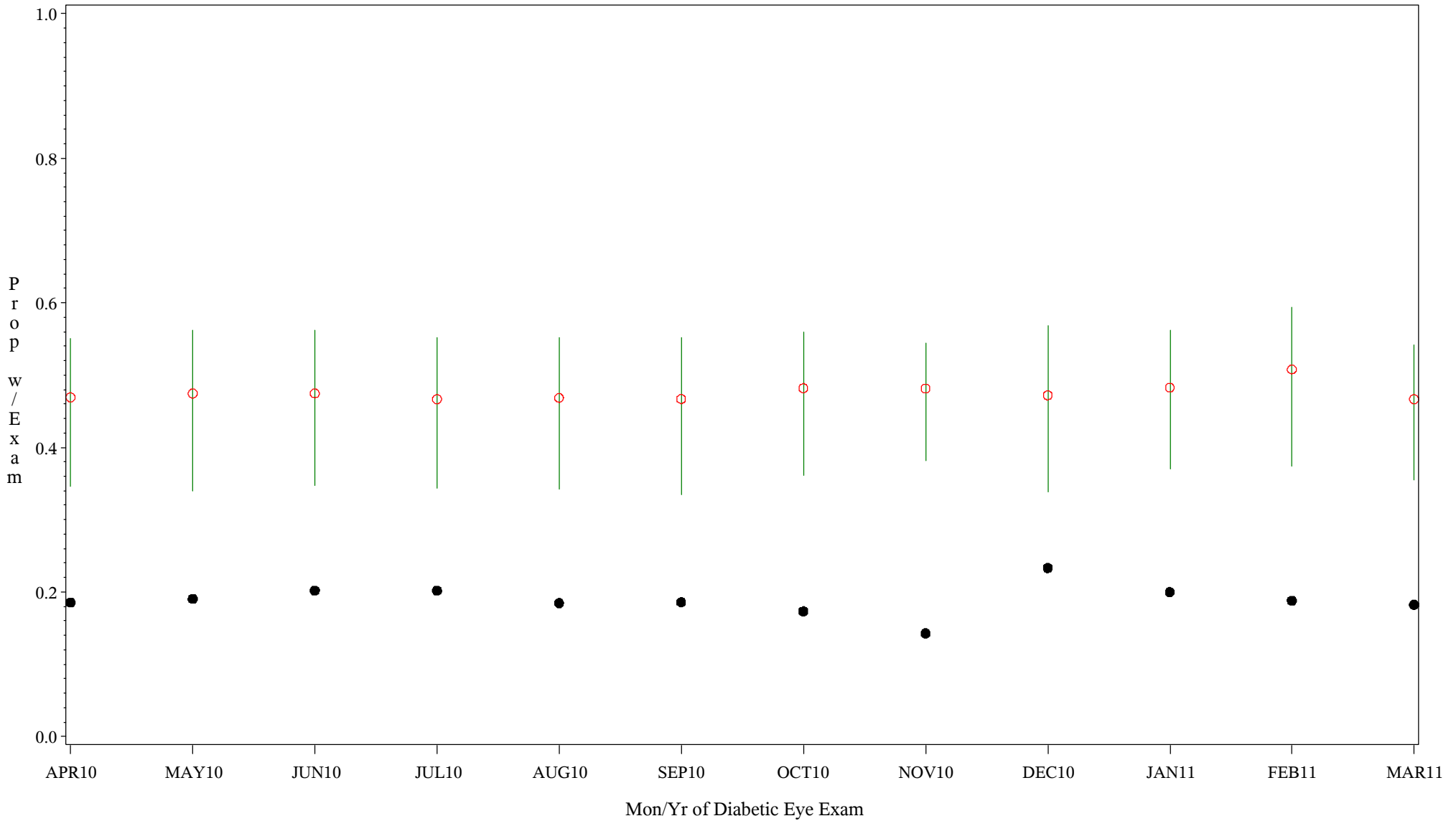
Time Period: April 1, 2010 - March 31, 2011  
Denominator=All Diabetic Patients, Numerator=Diabetic Eye Exam  
Chart created: Wednesday, 18MAY2011  
Hospital=Sells - Tucson



PLOT ● Organization's Observed Rate ○ Expected Rate-Comparison Group

# Comp Chrt for Early Diagnosis of Diabetic Retinopathy (#5090)

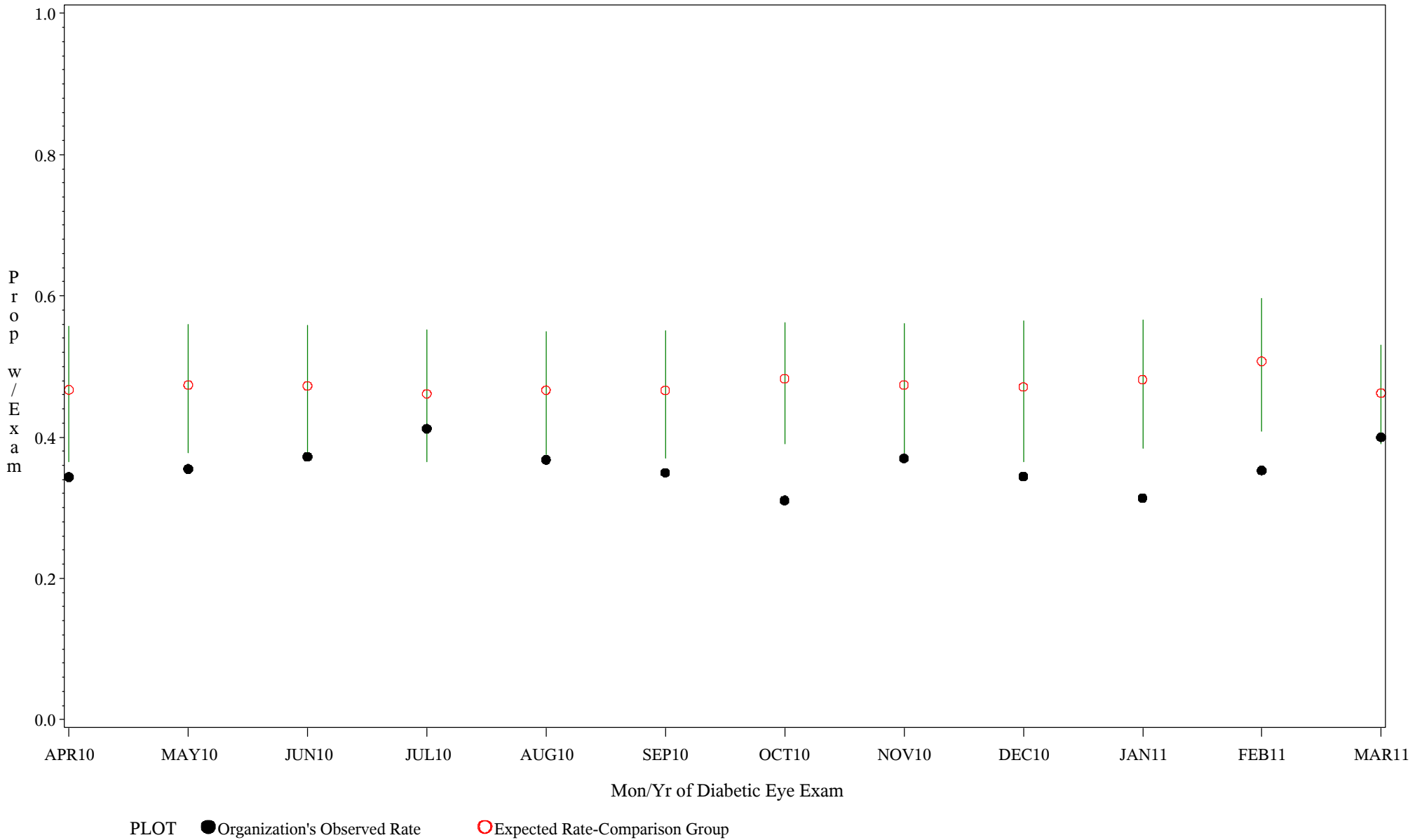
Time Period: April 1, 2010 - March 31, 2011  
 Denominator=All Diabetic Patients, Numerator=Diabetic Eye Exam  
 Chart created: Wednesday, 18MAY2011  
 Hospital=Ft. Yates - Aberdeen



PLOT ● Organization's Observed Rate ○ Expected Rate-Comparison Group

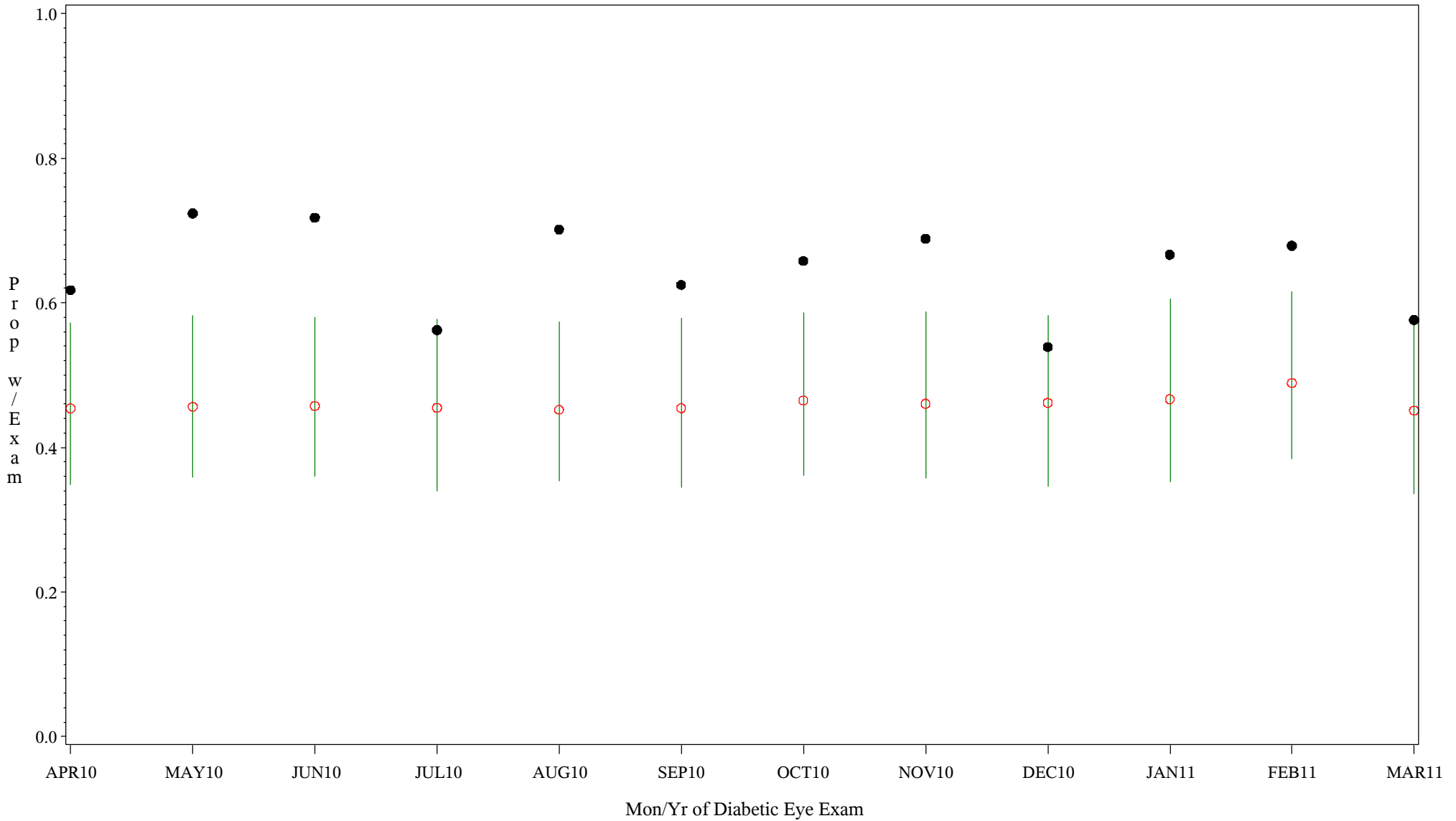
# Comp Chrt for Early Diagnosis of Diabetic Retinopathy (#5090)

Time Period: April 1, 2010 - March 31, 2011  
Denominator=All Diabetic Patients, Numerator=Diabetic Eye Exam  
Chart created: Wednesday, 18MAY2011  
Hospital=Quentin N Burdick - Aberdeen



# Comp Chrt for Early Diagnosis of Diabetic Retinopathy (#5090)

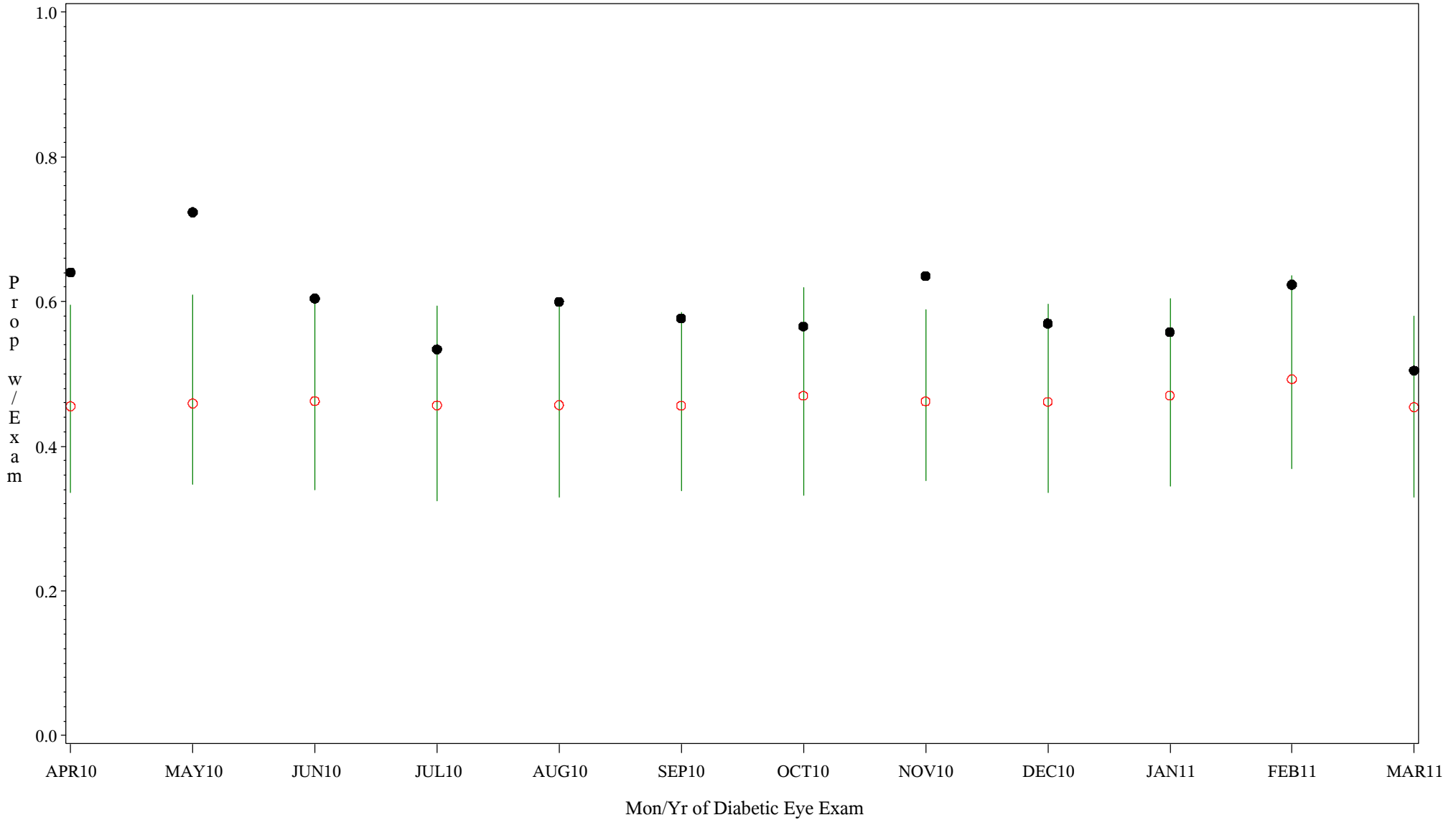
Time Period: April 1, 2010 - March 31, 2011  
Denominator=All Diabetic Patients, Numerator=Diabetic Eye Exam  
Chart created: Wednesday, 18MAY2011  
Hospital=Mescalero - Albuquerque



PLOT ● Organization's Observed Rate ○ Expected Rate-Comparison Group

# Comp Chrt for Early Diagnosis of Diabetic Retinopathy (#5090)

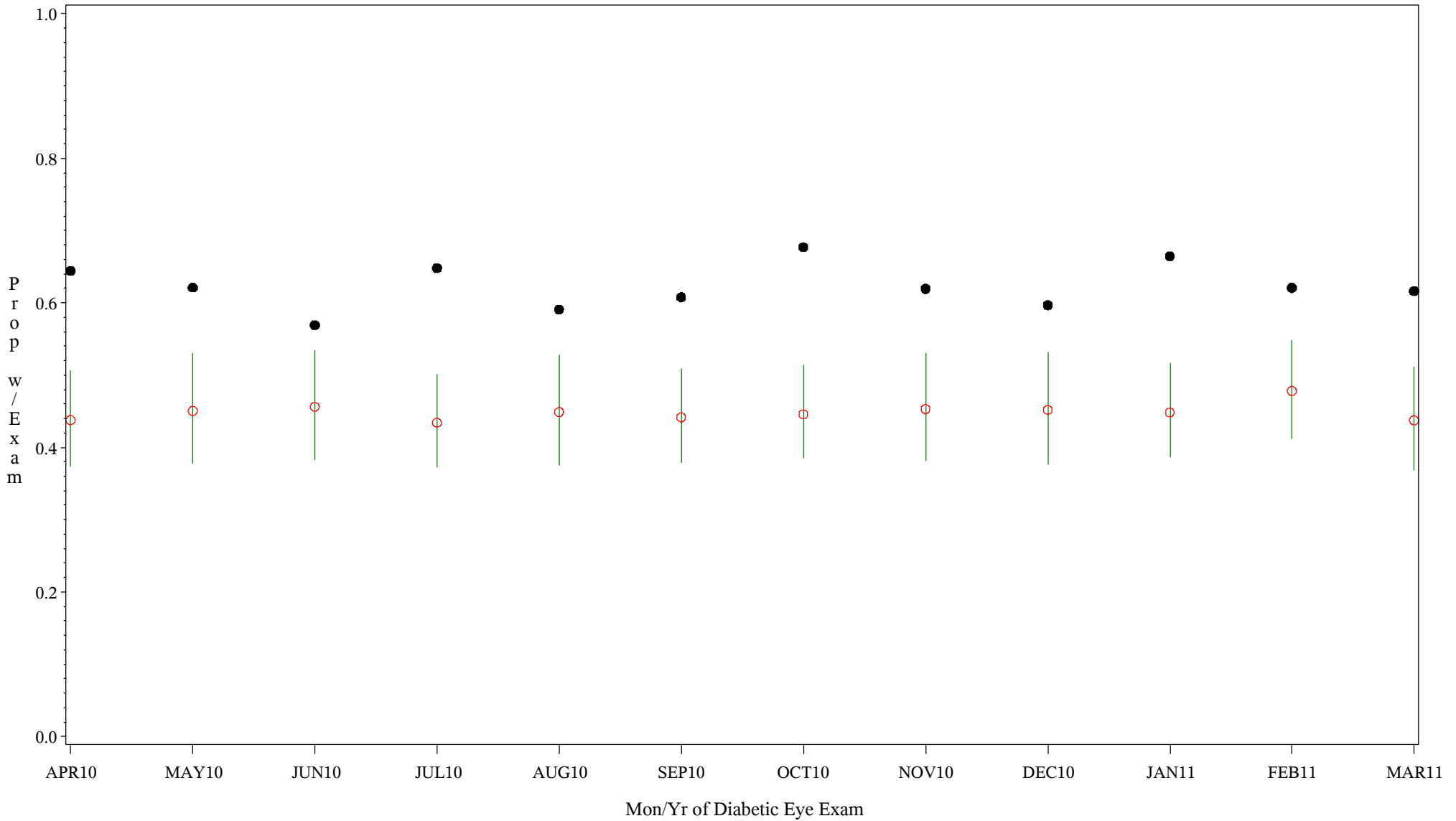
Time Period: April 1, 2010 - March 31, 2011  
 Denominator=All Diabetic Patients, Numerator=Diabetic Eye Exam  
 Chart created: Wednesday, 18MAY2011  
 Hospital=Santa Fe - Albuquerque



PLOT ● Organization's Observed Rate ○ Expected Rate-Comparison Group

# Comp Chrt for Early Diagnosis of Diabetic Retinopathy (#5090)

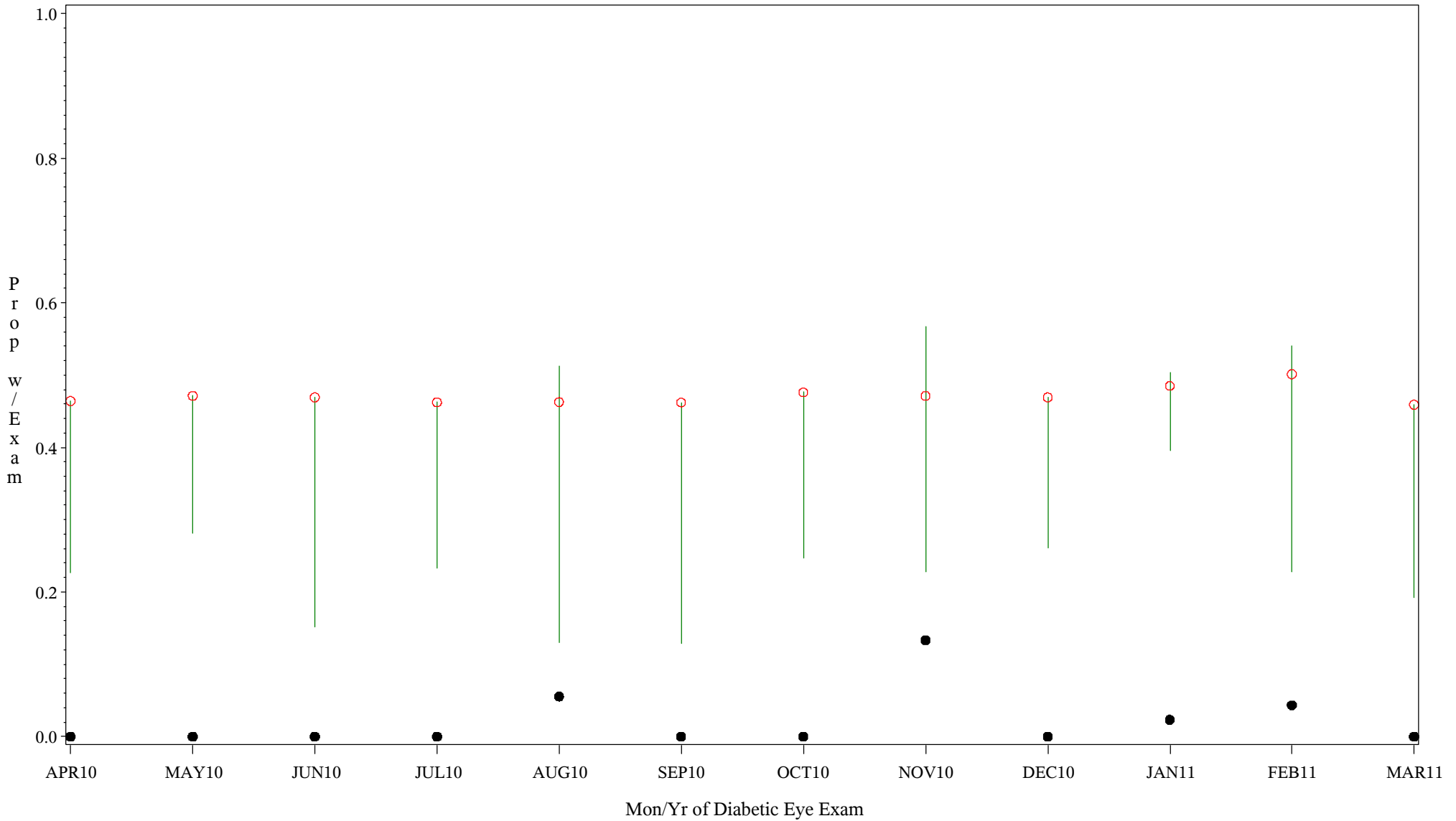
Time Period: April 1, 2010 - March 31, 2011  
 Denominator=All Diabetic Patients, Numerator=Diabetic Eye Exam  
 Chart created: Wednesday, 18MAY2011  
 Hospital=Zuni - Albuquerque



PLOT ● Organization's Observed Rate ○ Expected Rate-Comparison Group

# Comp Chrt for Early Diagnosis of Diabetic Retinopathy (#5090)

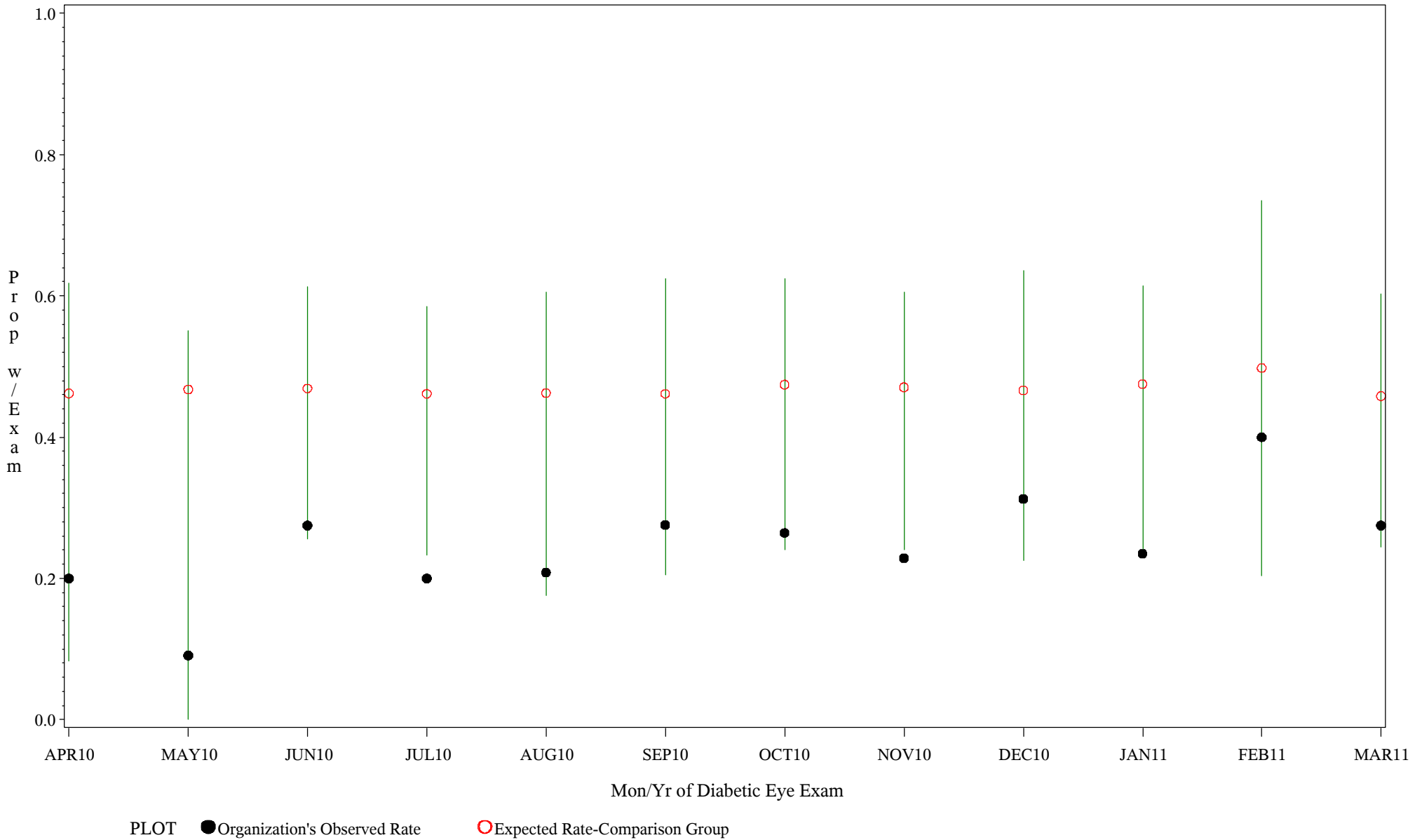
Time Period: April 1, 2010 - March 31, 2011  
 Denominator=All Diabetic Patients, Numerator=Diabetic Eye Exam  
 Chart created: Wednesday, 18MAY2011  
 Hospital=Barrow - Alaska



PLOT ● Organization's Observed Rate ○ Expected Rate-Comparison Group

# Comp Chrt for Early Diagnosis of Diabetic Retinopathy (#5090)

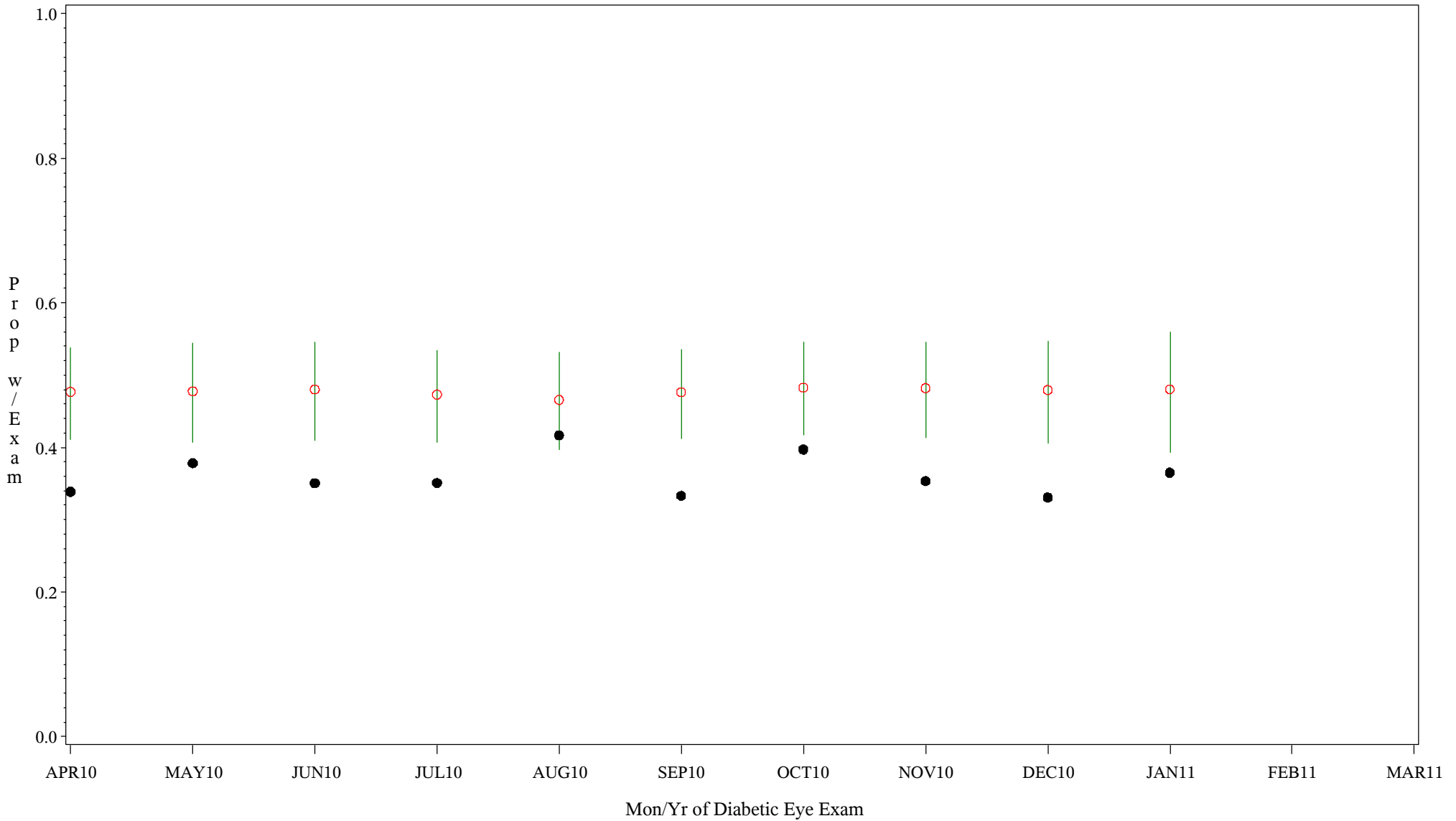
Time Period: April 1, 2010 - March 31, 2011  
 Denominator=All Diabetic Patients, Numerator=Diabetic Eye Exam  
 Chart created: Wednesday, 18MAY2011  
 Hospital=Maniilaq - Alaska





# Comp Chrt for Early Diagnosis of Diabetic Retinopathy (#5090)

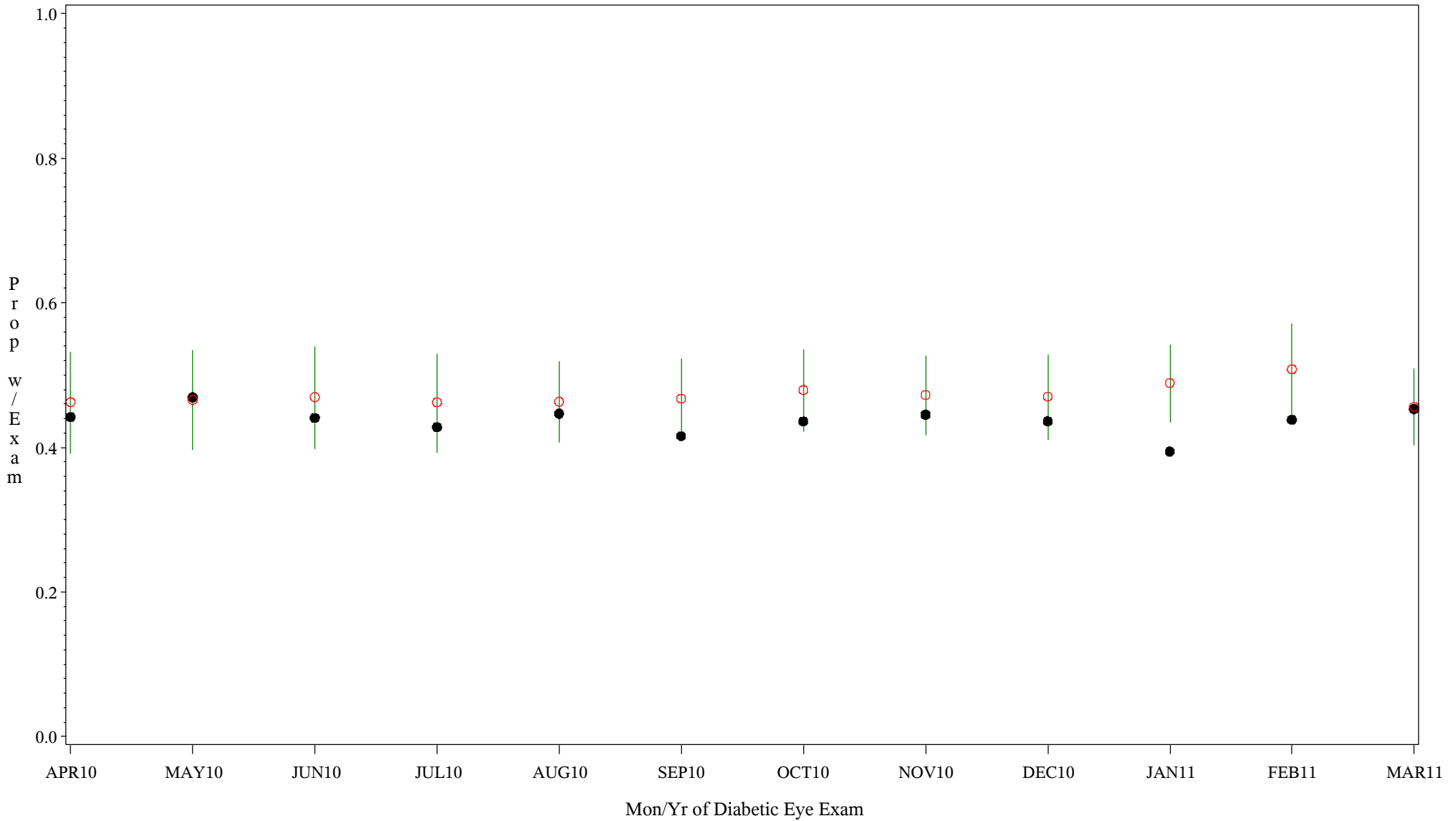
Time Period: April 1, 2010 - March 31, 2011  
 Denominator=All Diabetic Patients, Numerator=Diabetic Eye Exam  
 Chart created: Wednesday, 18MAY2011  
 Hospital=Lawton - Oklahoma



PLOT ● Organization's Observed Rate ○ Expected Rate-Comparison Group

# Comp Chrt for Early Diagnosis of Diabetic Retinopathy (#5090)

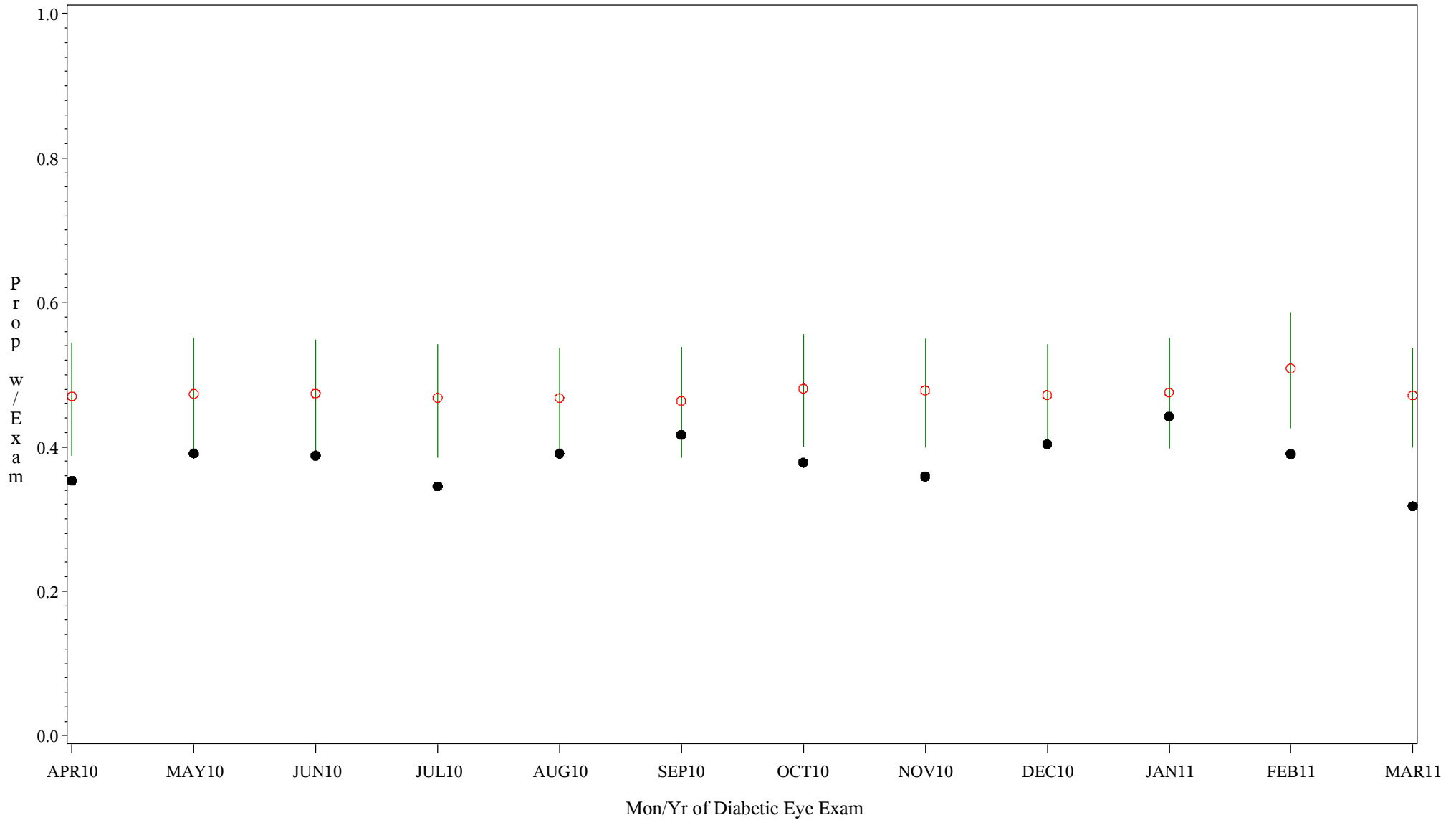
Time Period: April 1, 2010 - March 31, 2011  
 Denominator=All Diabetic Patients, Numerator=Diabetic Eye Exam  
 Chart created: Wednesday, 18MAY2011  
 Hospital=Chickasaw Hospital - Oklahoma



PLOT ● Organization's Observed Rate ○ Expected Rate-Comparison Group

# Comp Chrt for Early Diagnosis of Diabetic Retinopathy (#5090)

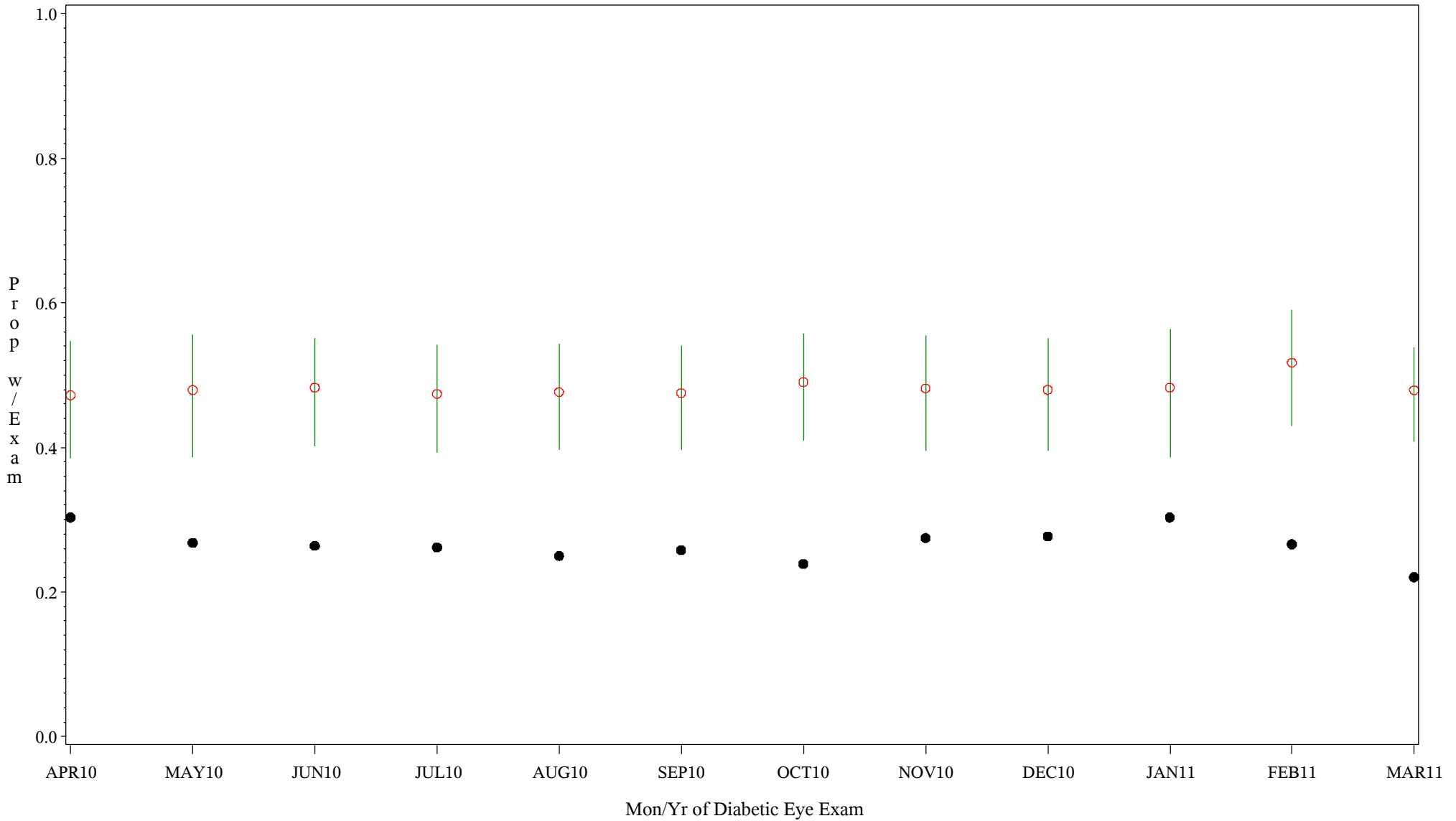
Time Period: April 1, 2010 - March 31, 2011  
 Denominator=All Diabetic Patients, Numerator=Diabetic Eye Exam  
 Chart created: Wednesday, 18MAY2011  
 Hospital=Choctaw Hosp - Nashville



PLOT ● Organization's Observed Rate ○ Expected Rate-Comparison Group

# Comp Chrt for Early Diagnosis of Diabetic Retinopathy (#5090)

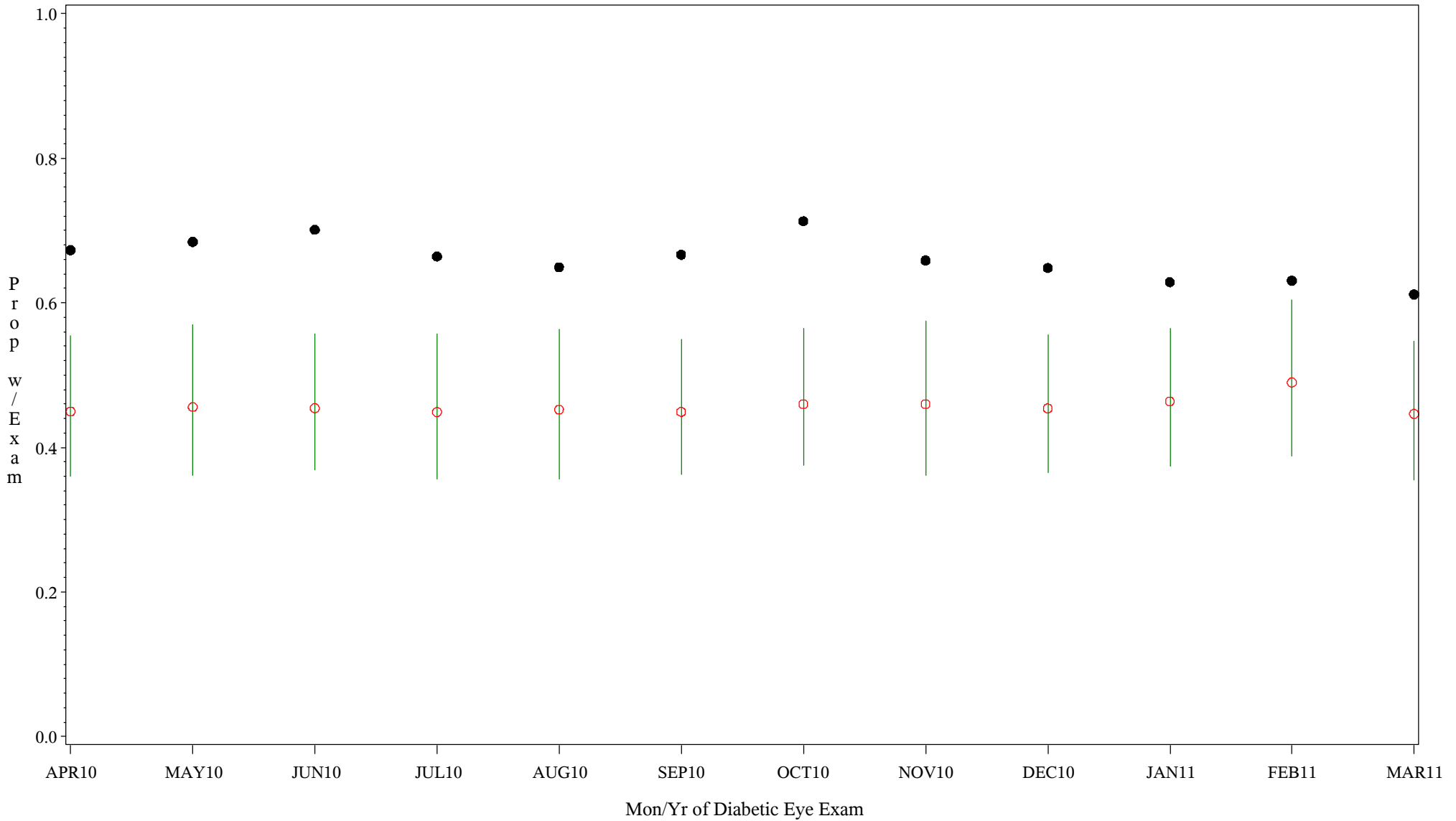
Time Period: April 1, 2010 - March 31, 2011  
 Denominator=All Diabetic Patients, Numerator=Diabetic Eye Exam  
 Chart created: Wednesday, 18MAY2011  
 Hospital=Hopi Health Center - Phoenix



PLOT ● Organization's Observed Rate ○ Expected Rate-Comparison Group

# Comp Chrt for Early Diagnosis of Diabetic Retinopathy (#5090)

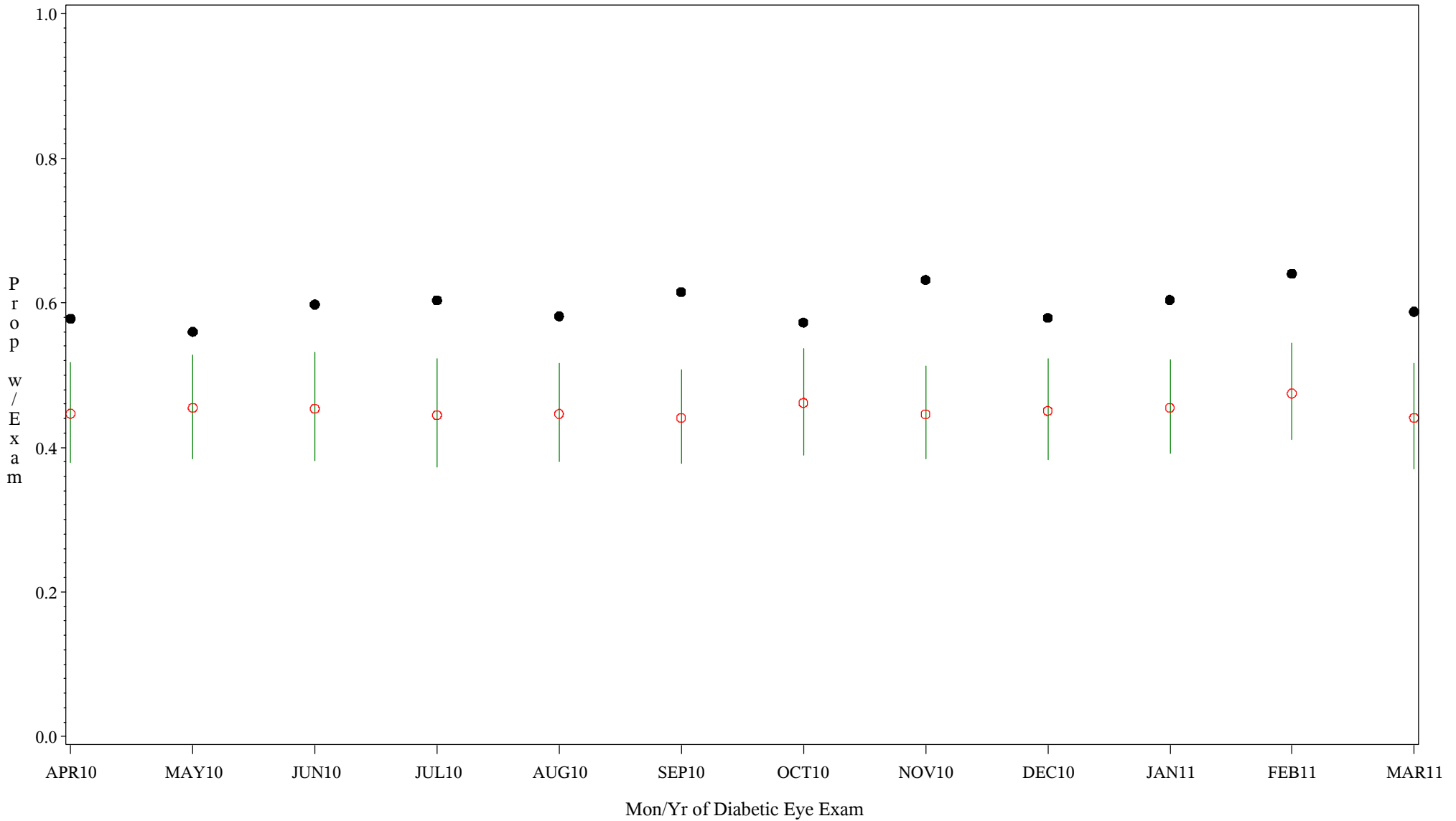
Time Period: April 1, 2010 - March 31, 2011  
 Denominator=All Diabetic Patients, Numerator=Diabetic Eye Exam  
 Chart created: Wednesday, 18MAY2011  
 Hospital=Parker - Phoenix



PLOT ● Organization's Observed Rate ○ Expected Rate-Comparison Group

# Comp Chrt for Early Diagnosis of Diabetic Retinopathy (#5090)

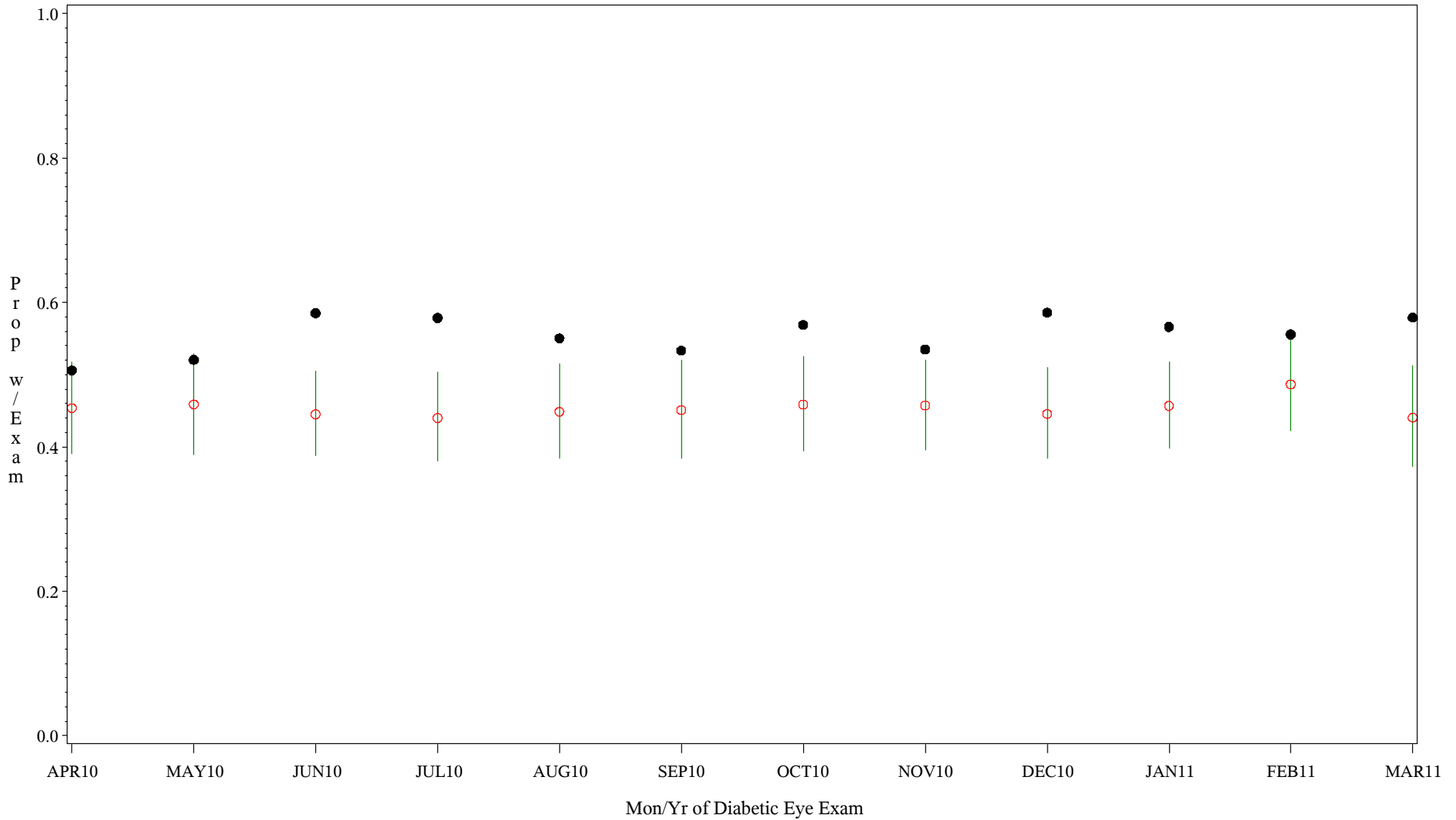
Time Period: April 1, 2010 - March 31, 2011  
 Denominator=All Diabetic Patients, Numerator=Diabetic Eye Exam  
 Chart created: Wednesday, 18MAY2011  
 Hospital=White River - Phoenix



PLOT ● Organization's Observed Rate ○ Expected Rate-Comparison Group

# Comp Chrt for Early Diagnosis of Diabetic Retinopathy (#5090)

Time Period: April 1, 2010 - March 31, 2011  
 Denominator=All Diabetic Patients, Numerator=Diabetic Eye Exam  
 Chart created: Wednesday, 18MAY2011  
 Hospital=Chinle - Navajo



PLOT ● Organization's Observed Rate ○ Expected Rate-Comparison Group