

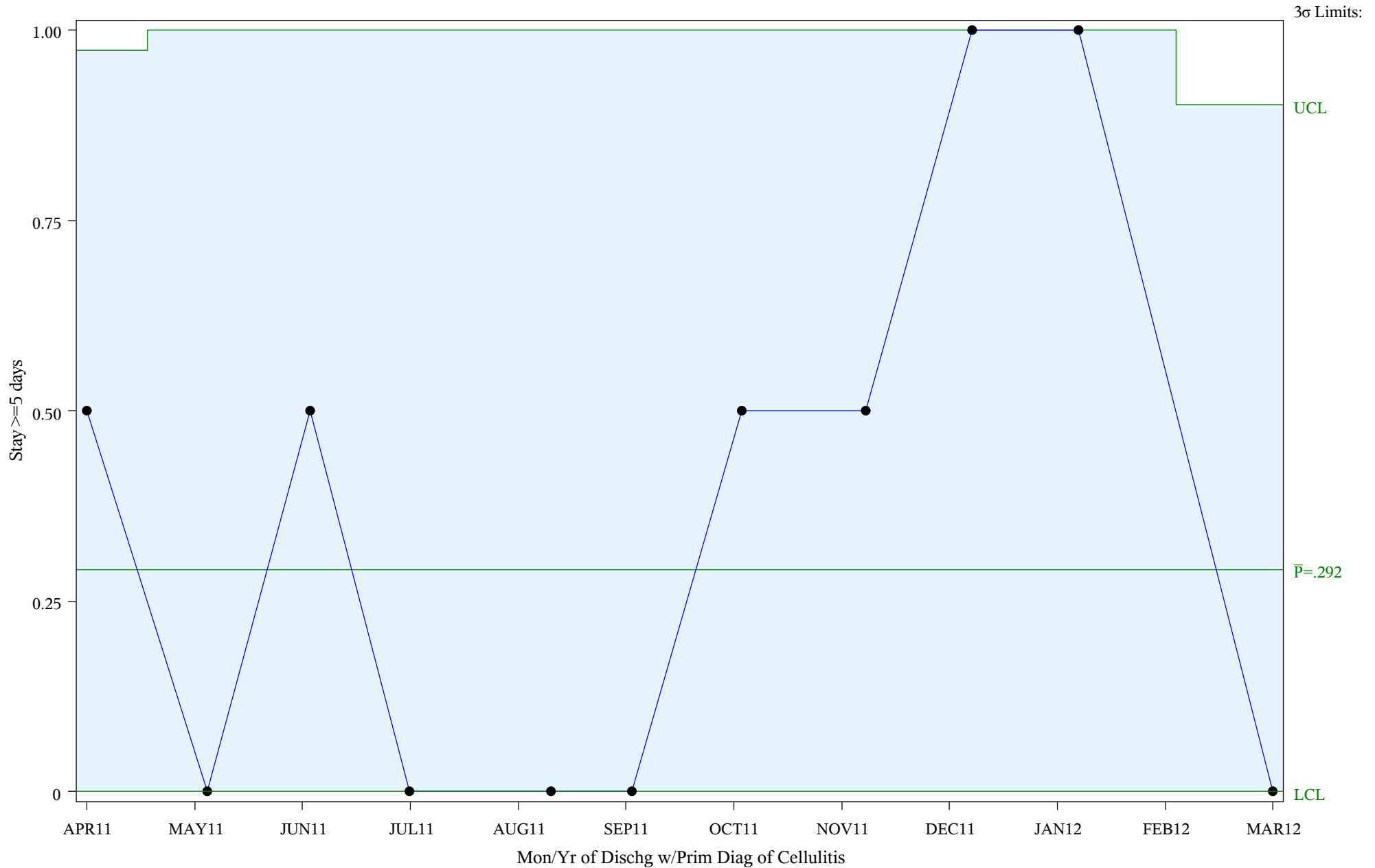
# P Chart for Medical Management of Cellulitis (#5086)

Time Period: April 1, 2011 - March 31, 2012

Denom=All Admit w/Prim Diagnosis of Cellulitis, Num=Stay >=5 days

Chart created: Friday, 11MAY2012

Hospital=Quentin N Burdick - Aberdeen



Subgroup Sizes: Min n = 1 Max n = 5

Source: ORYX2.rate5086

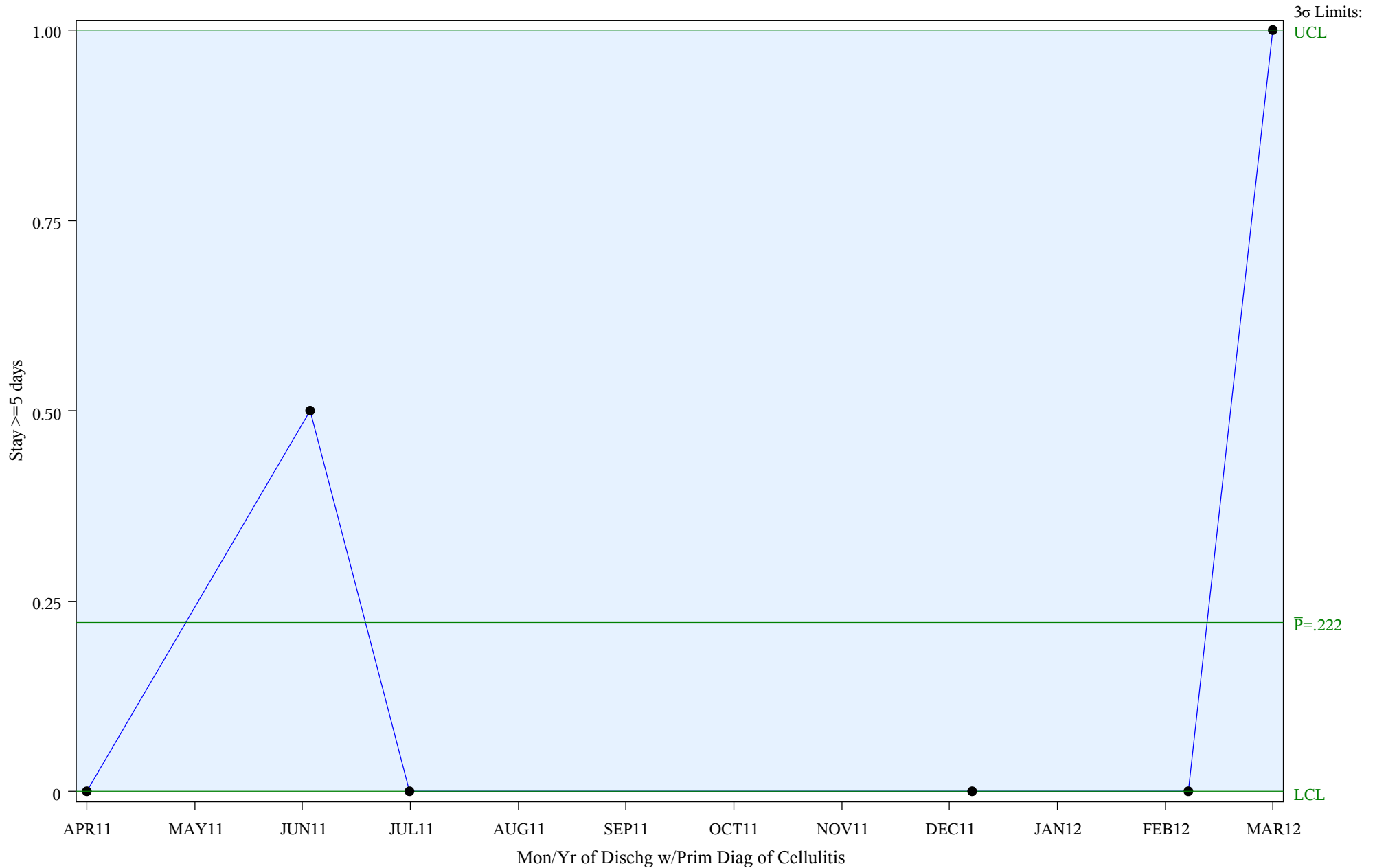
# P Chart for Medical Management of Cellulitis (#5086)

Time Period: April 1, 2011 - March 31, 2012

Denom=All Admit w/Prim Diagnosis of Cellulitis, Num=Stay >=5 days

Chart created: Friday, 11MAY2012

Hospital=Winnebago - Aberdeen



Subgroup Sizes: Min n = 1 Max n = 2

Source: ORYX2.rate5086

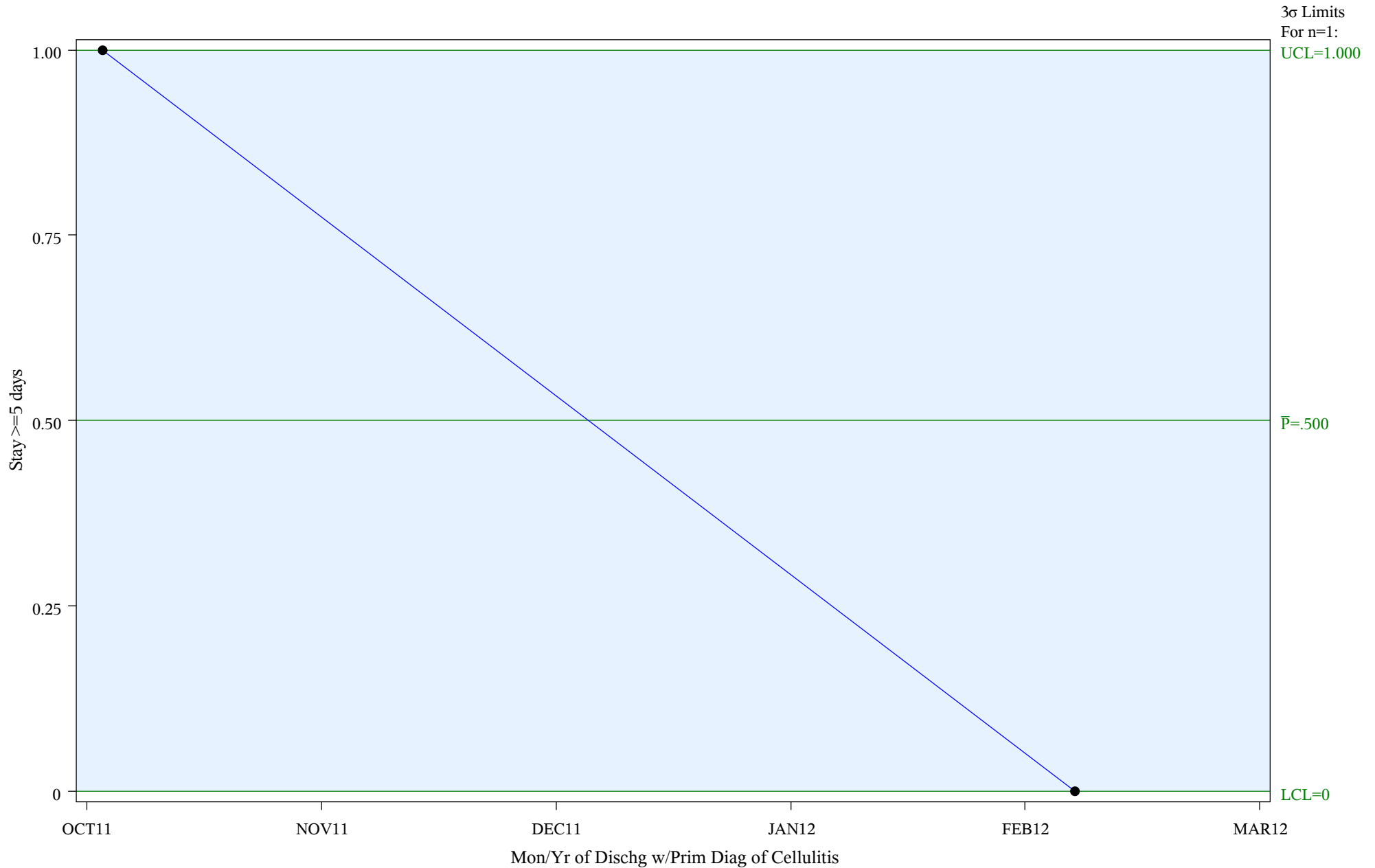
# P Chart for Medical Management of Cellulitis (#5086)

Time Period: April 1, 2011 - March 31, 2012

Denom=All Admit w/Prim Diagnosis of Cellulitis, Num=Stay >=5 days

Chart created: Friday, 11MAY2012

Hospital=Zuni - Albuquerque



Subgroup Sizes: ● n = 1

Source: ORYX2.rate5086

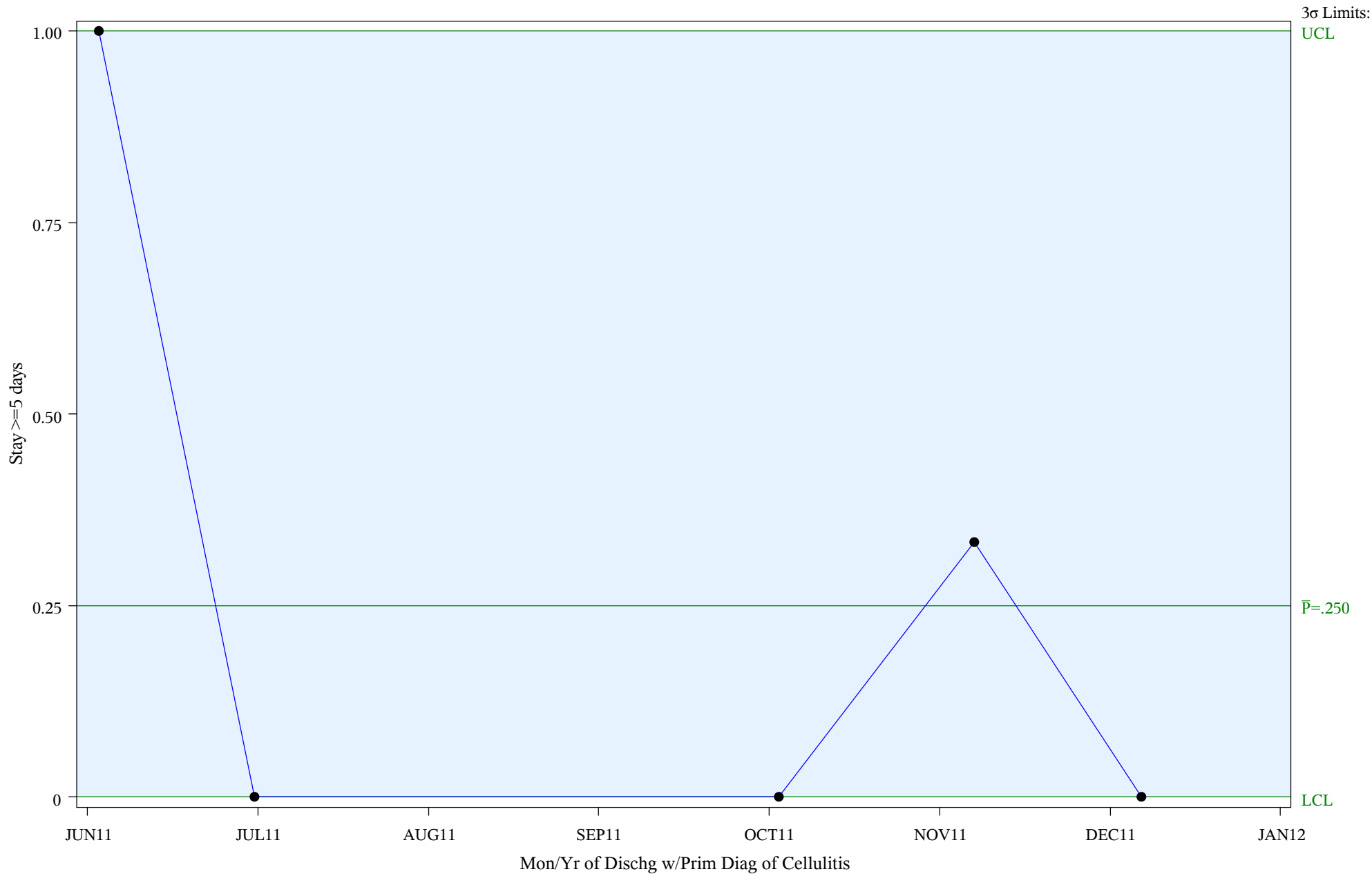
# P Chart for Medical Management of Cellulitis (#5086)

Time Period: April 1, 2011 - March 31, 2012

Denom=All Admit w/Prim Diagnosis of Cellulitis, Num=Stay >=5 days

Chart created: Friday, 11MAY2012

Hospital=Barrow - Alaska



Subgroup Sizes: Min n = 1 Max n = 3

Source: ORYX2.rate5086

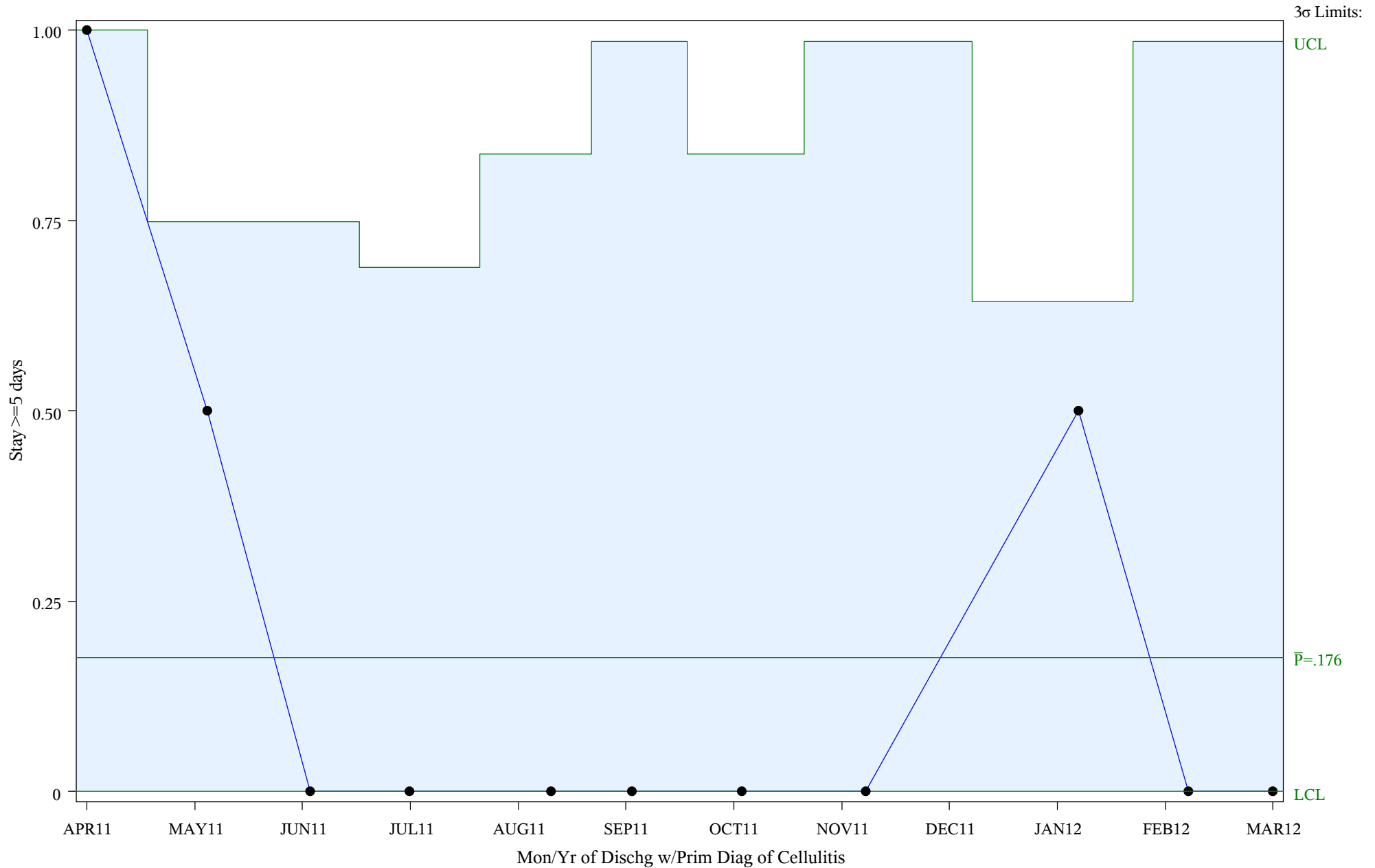
# P Chart for Medical Management of Cellulitis (#5086)

Time Period: April 1, 2011 - March 31, 2012

Denom=All Admit w/Prim Diagnosis of Cellulitis, Num=Stay >=5 days

Chart created: Friday, 11MAY2012

Hospital=YK Health - Alaska



Subgroup Sizes: Min n = 1 Max n = 6

Source: ORYX2.rate5086

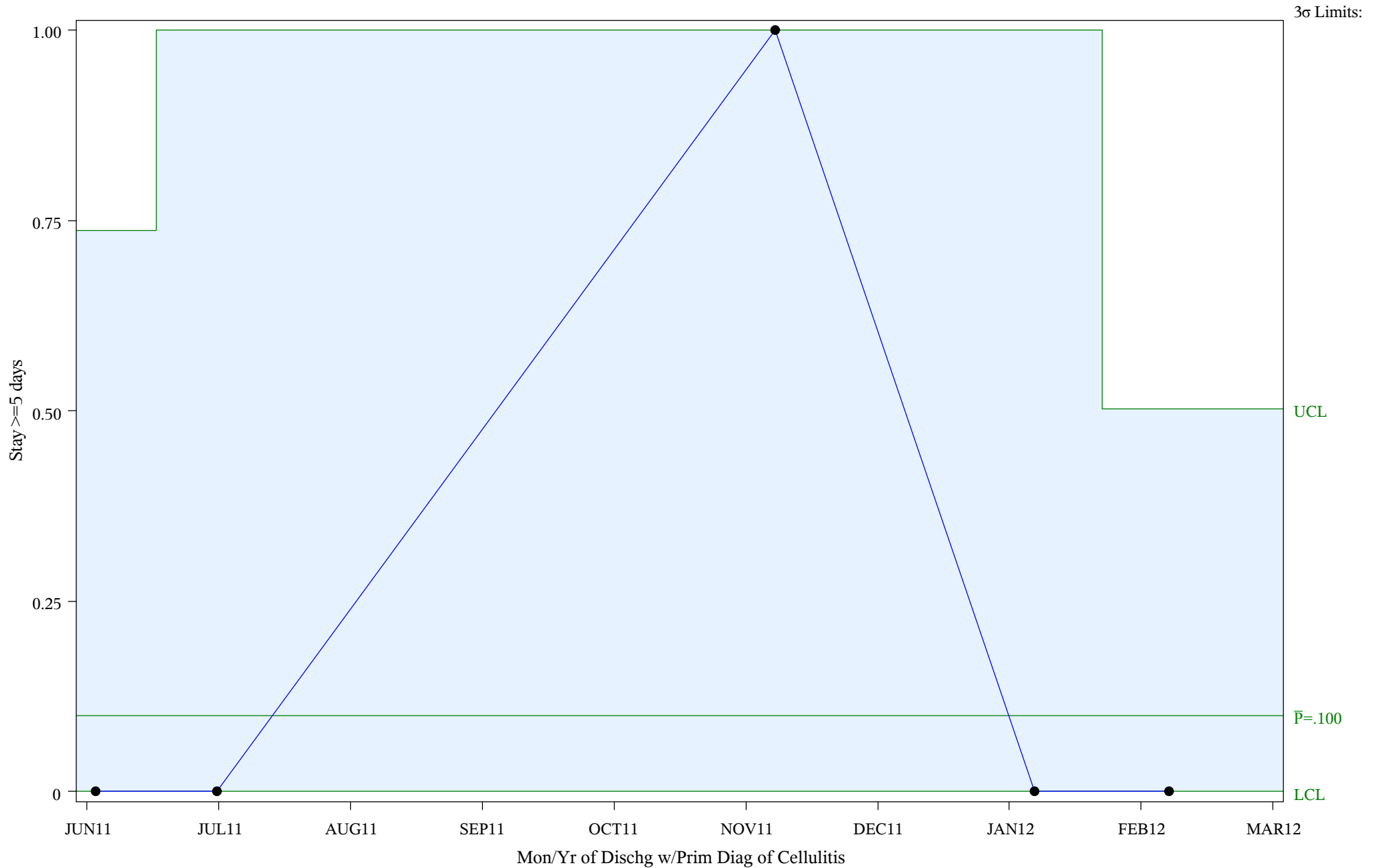
# P Chart for Medical Management of Cellulitis (#5086)

Time Period: April 1, 2011 - March 31, 2012

Denom=All Admit w/Prim Diagnosis of Cellulitis, Num=Stay >=5 days

Chart created: Friday, 11MAY2012

Hospital=Manilaq - Alaska



Subgroup Sizes: Min n = 1 Max n = 5

Source: ORYX2.rate5086

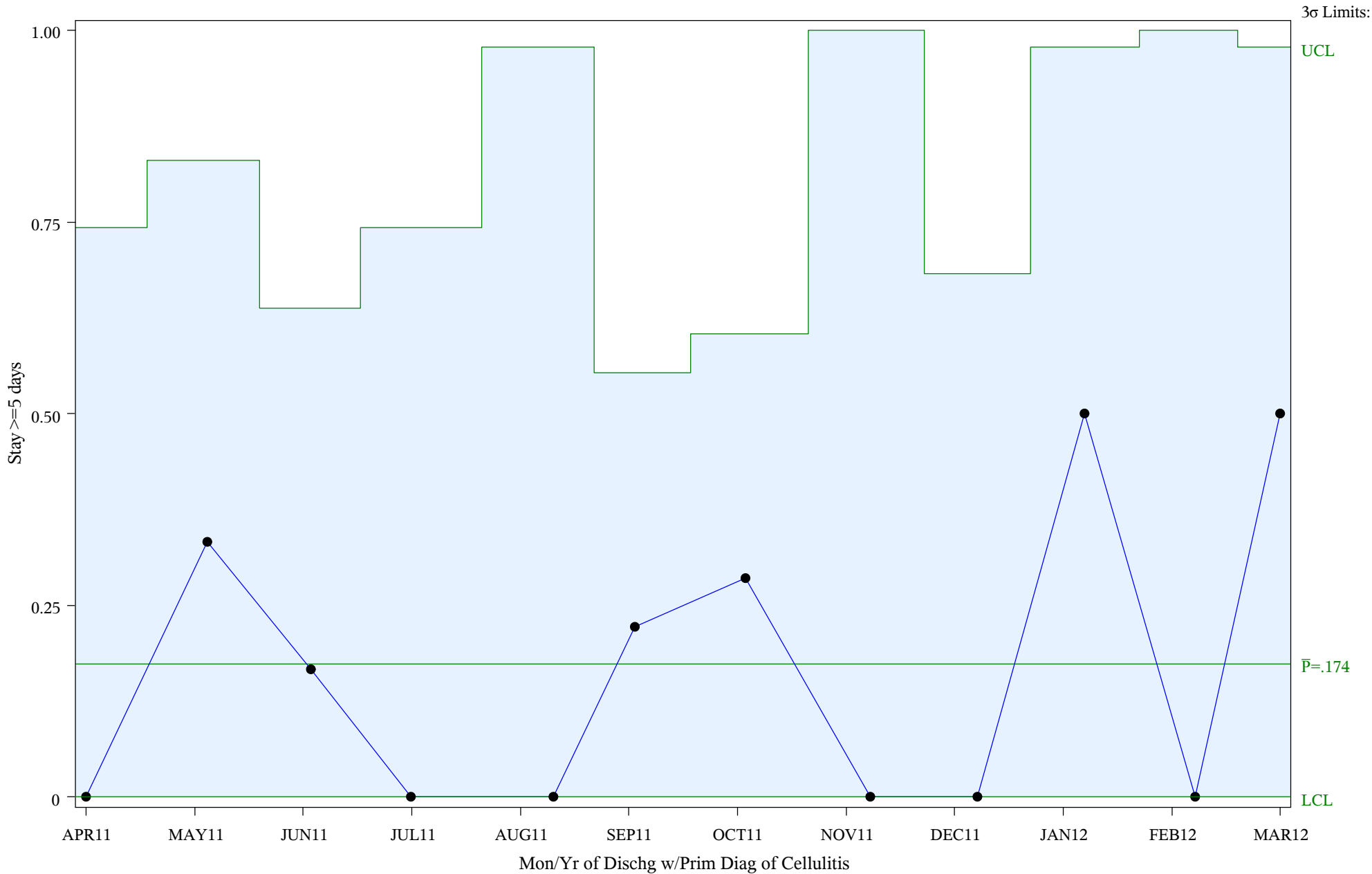
# P Chart for Medical Management of Cellulitis (#5086)

Time Period: April 1, 2011 - March 31, 2012

Denom=All Admit w/Prim Diagnosis of Cellulitis, Num=Stay >=5 days

Chart created: Friday, 11MAY2012

Hospital=Shiprock - Navajo



Subgroup Sizes: Min n = 1 Max n = 9

Source: ORYX2.rate5086