

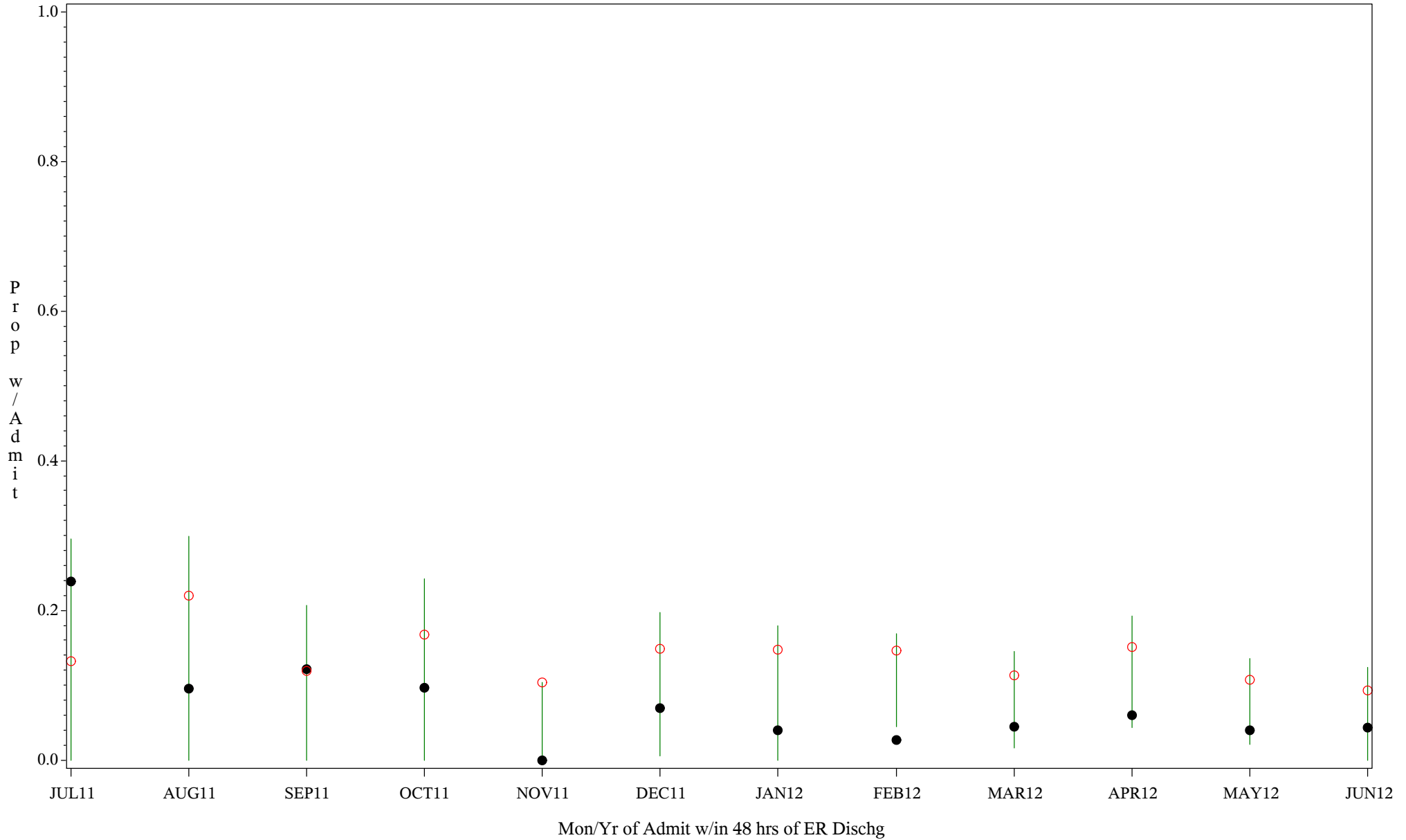
Comp Chart for Inadeq Treatment in Emerg Patients (#5161)

Time Period: July 1,2011 - June 30,2012

Denom=All ER Admits, Numer=Any Admit w/in 48 hrs of ER Dischg

Chart created: Tuesday, 28AUG2012

Hospital=Quentin N Burdick - Aberdeen



PLOT ● Organization's Observed Rate ○ Expected Rate-Comparison Group

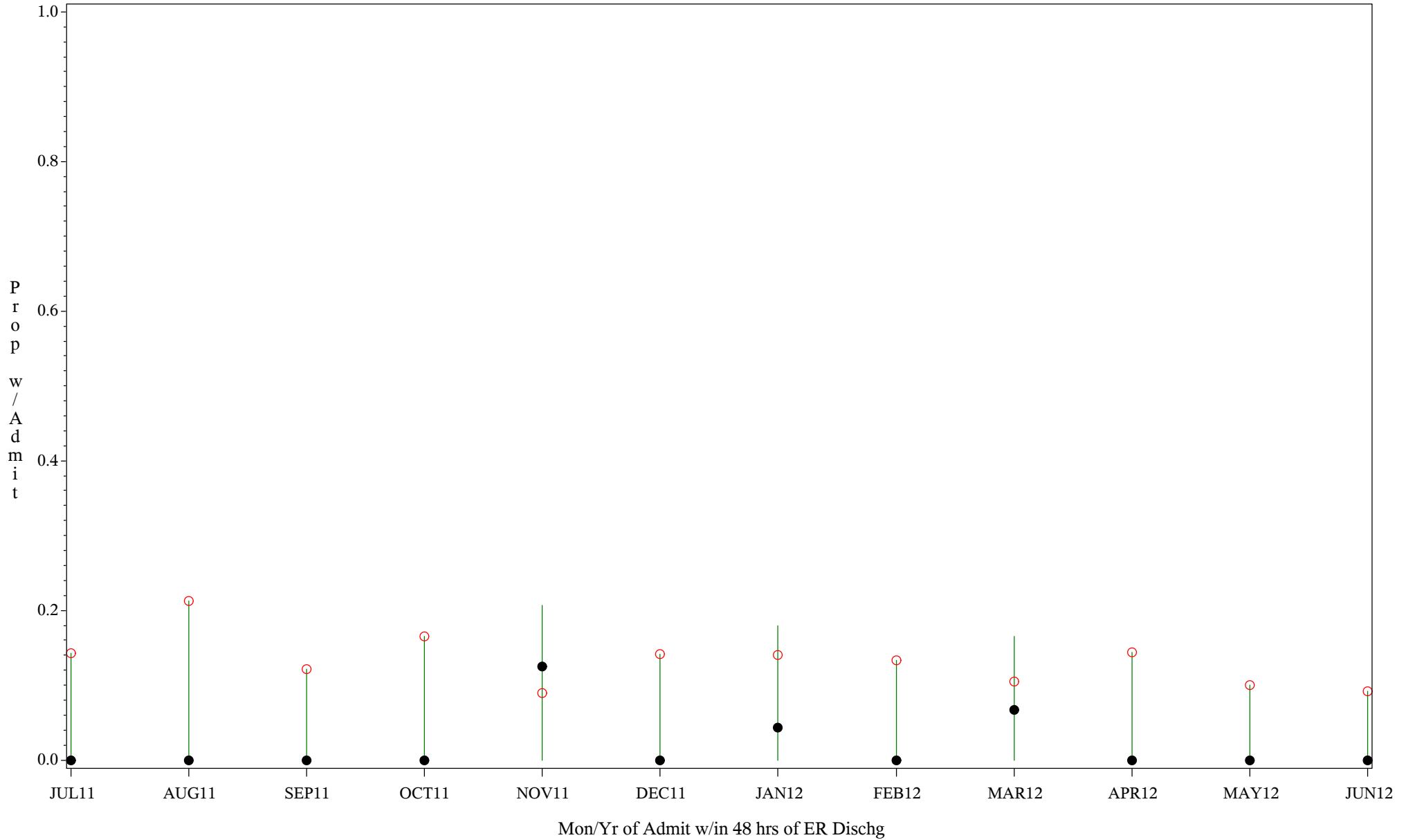
Comp Chart for Inadeq Treatment in Emerg Patients (#5161)

Time Period: July 1,2011 - June 30,2012

Denom=All ER Admits, Numer=Any Admit w/in 48 hrs of ER Dischg

Chart created: Tuesday, 28AUG2012

Hospital=Winnebago - Aberdeen



PLOT ● Organization's Observed Rate ○ Expected Rate-Comparison Group

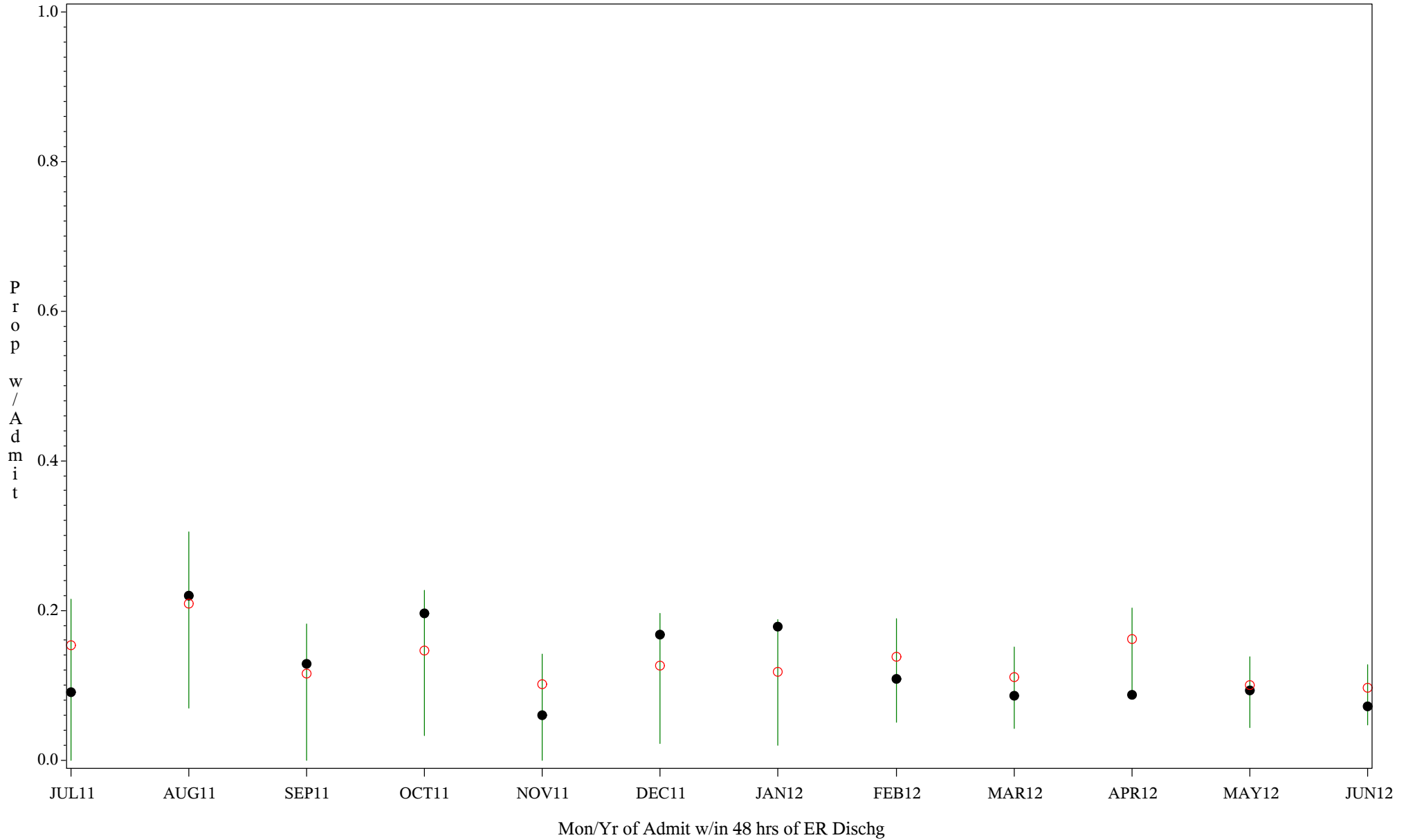
Comp Chart for Inadeq Treatment in Emerg Patients (#5161)

Time Period: July 1,2011 - June 30,2012

Denom=All ER Admits, Numer=Any Admit w/in 48 hrs of ER Dischg

Chart created: Tuesday, 28AUG2012

Hospital=YK Health - Alaska



PLOT ● Organization's Observed Rate ○ Expected Rate-Comparison Group

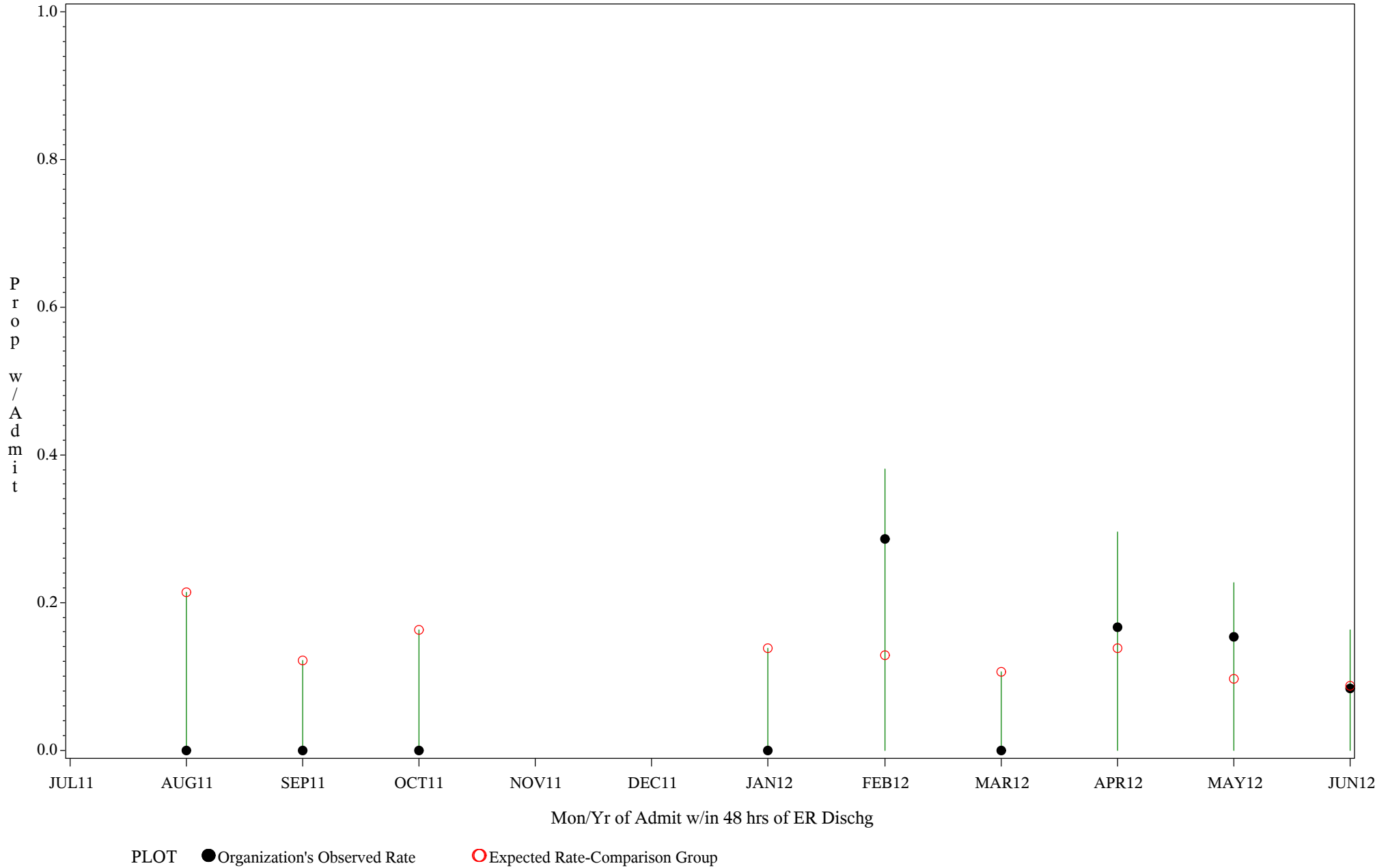
Comp Chart for Inadeq Treatment in Emerg Patients (#5161)

Time Period: July 1,2011 - June 30,2012

Denom=All ER Admits, Numer=Any Admit w/in 48 hrs of ER Dischg

Chart created: Tuesday, 28AUG2012

Hospital=San Carlos - Phoenix



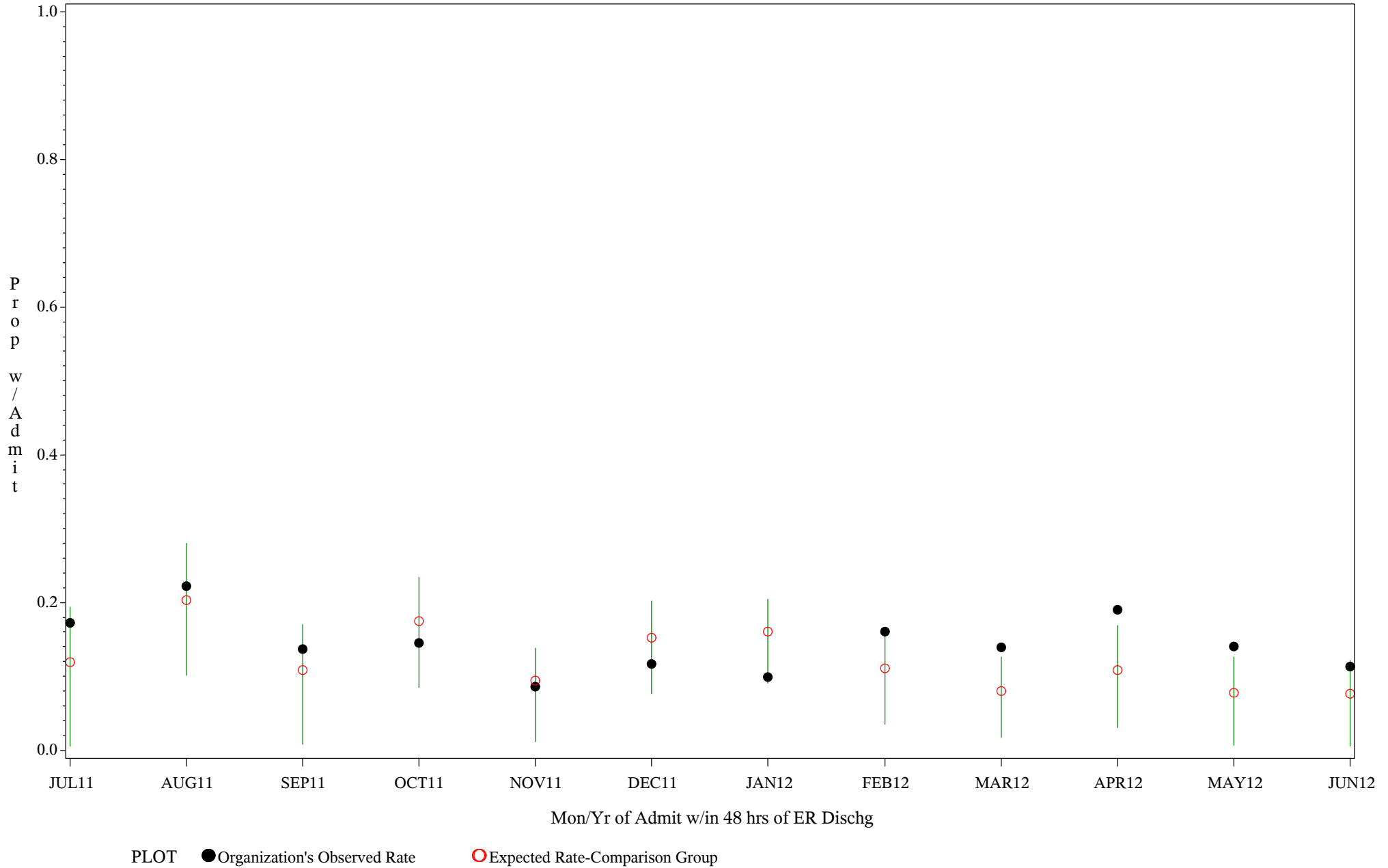
Comp Chart for Inadeq Treatment in Emerg Patients (#5161)

Time Period: July 1,2011 - June 30,2012

Denom=All ER Admits, Numer=Any Admit w/in 48 hrs of ER Dischg

Chart created: Tuesday, 28AUG2012

Hospital=GIMC - Navajo



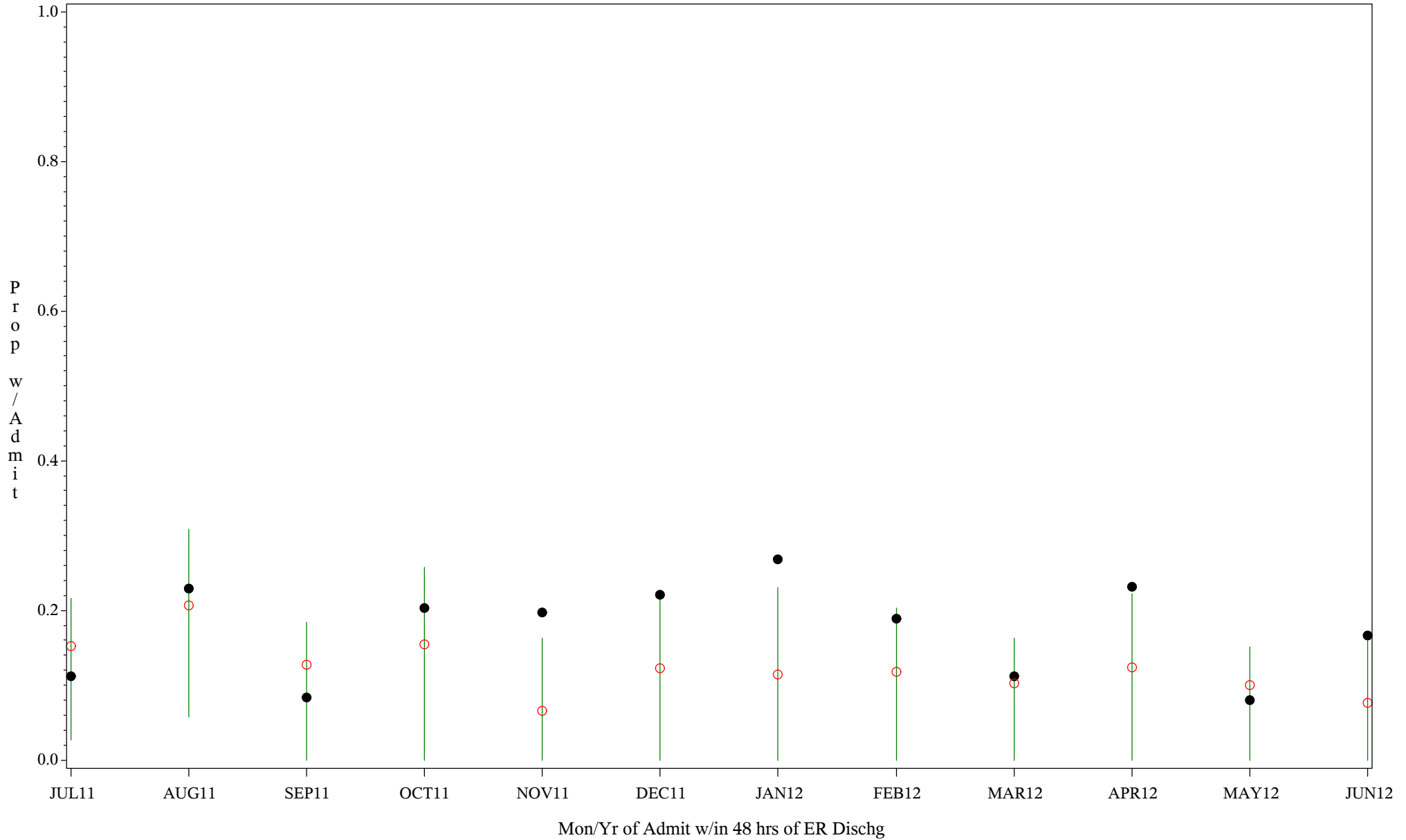
Comp Chart for Inadeq Treatment in Emerg Patients (#5161)

Time Period: July 1,2011 - June 30,2012

Denom=All ER Admits, Numer=Any Admit w/in 48 hrs of ER Dischg

Chart created: Tuesday, 28AUG2012

Hospital=Shiprock - Navajo



PLOT ● Organization's Observed Rate ○ Expected Rate-Comparison Group