

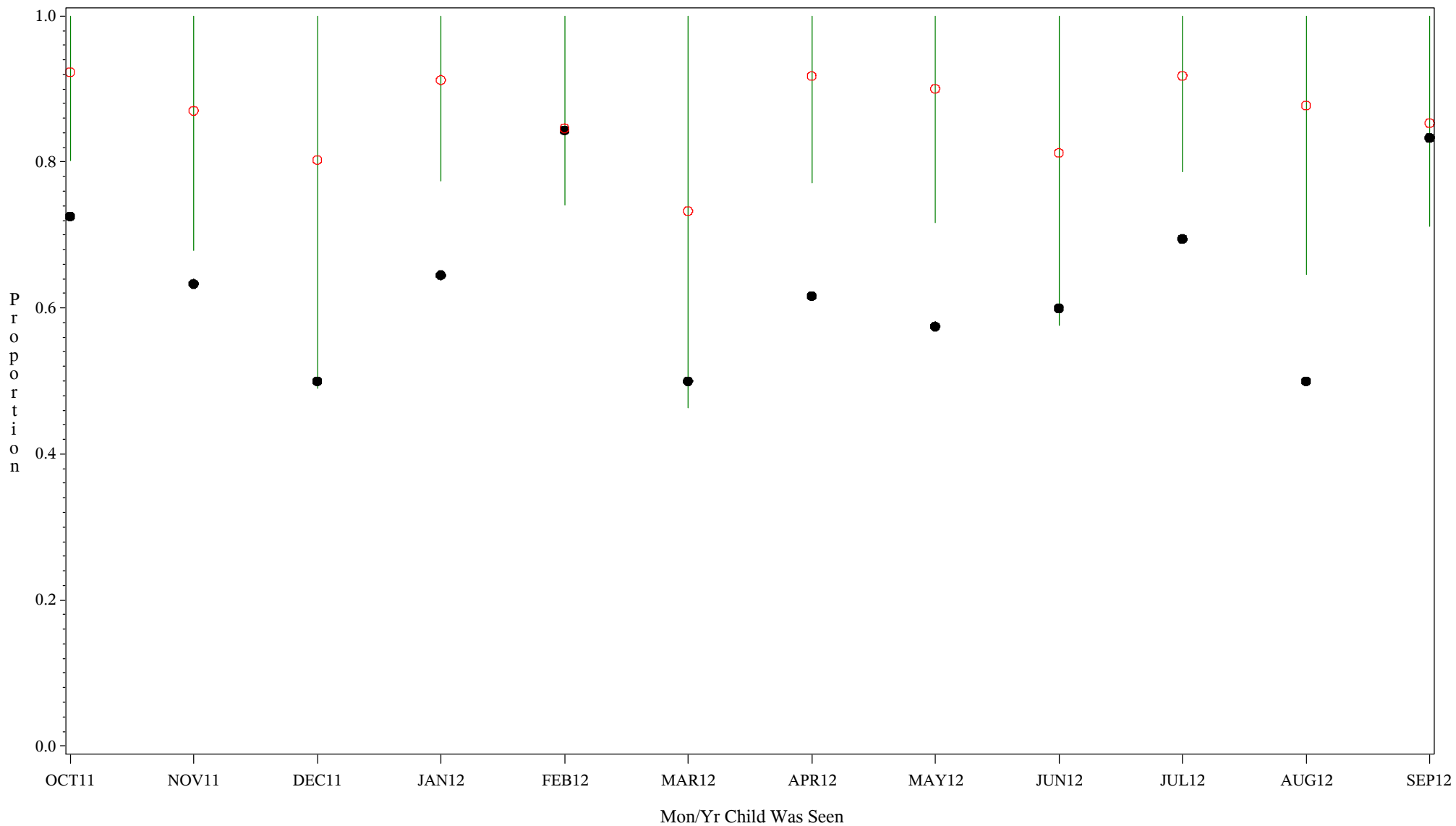
Comp Chart for Up-to-Date Immuniz (HEPB) (#5133)

Time Period: October 1, 2011 - September 30, 2012

Denominator=Children 7-15 months, Numerator=Up-to-Date Shots

Chart created: Thursday, 29NOV2012

hospital=Sells - Tucson



PLOT ● Organization's Observed Rate ○ Expected Rate-Comparison Group

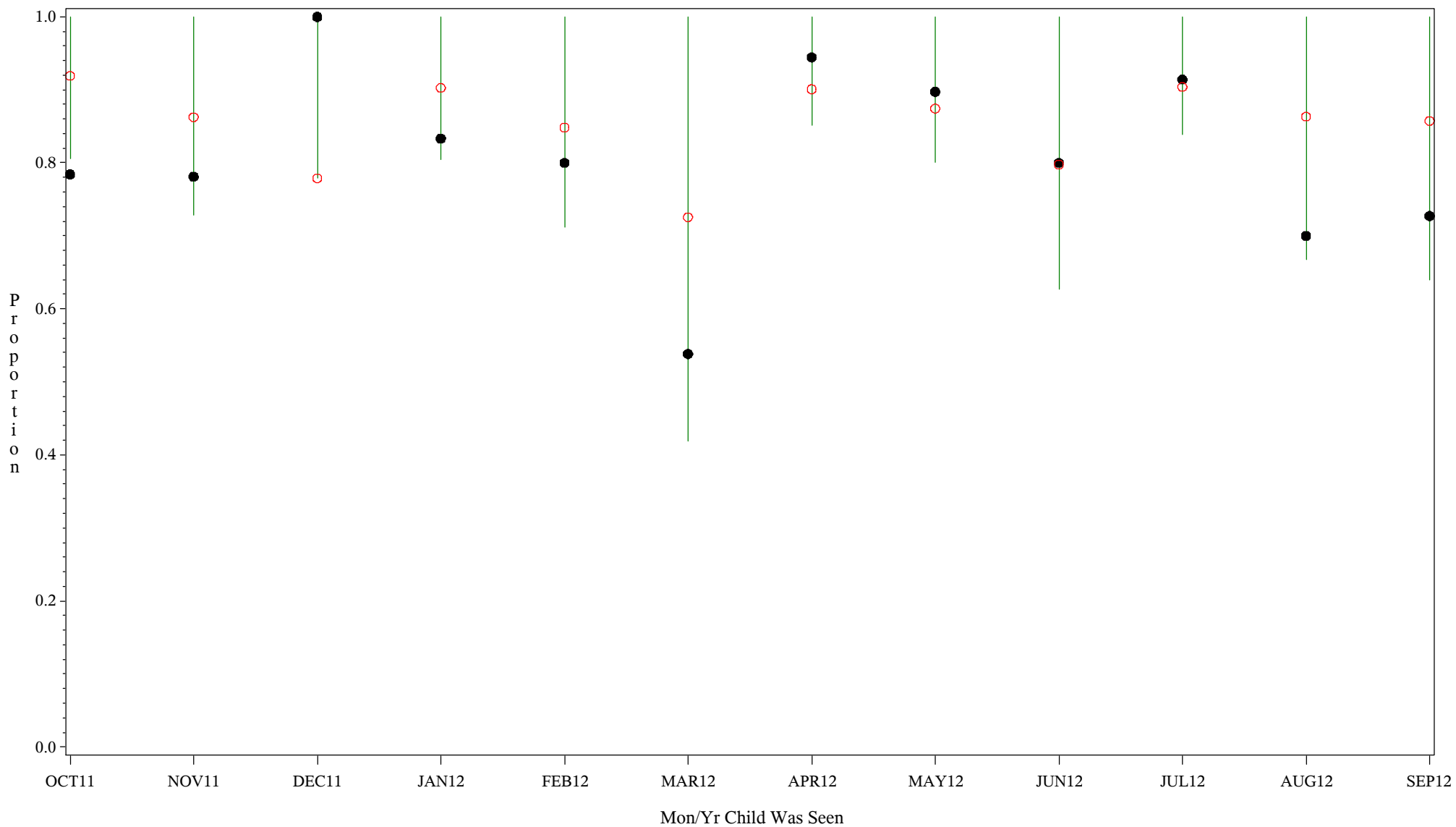
Comp Chart for Up-to-Date Immuniz (HEPB) (#5133)

Time Period: October 1, 2011 - September 30, 2012

Denominator=Children 7-15 months, Numerator=Up-to-Date Shots

Chart created: Thursday, 29NOV2012

hospital=Ft. Yates - Aberdeen



PLOT ● Organization's Observed Rate ○ Expected Rate-Comparison Group

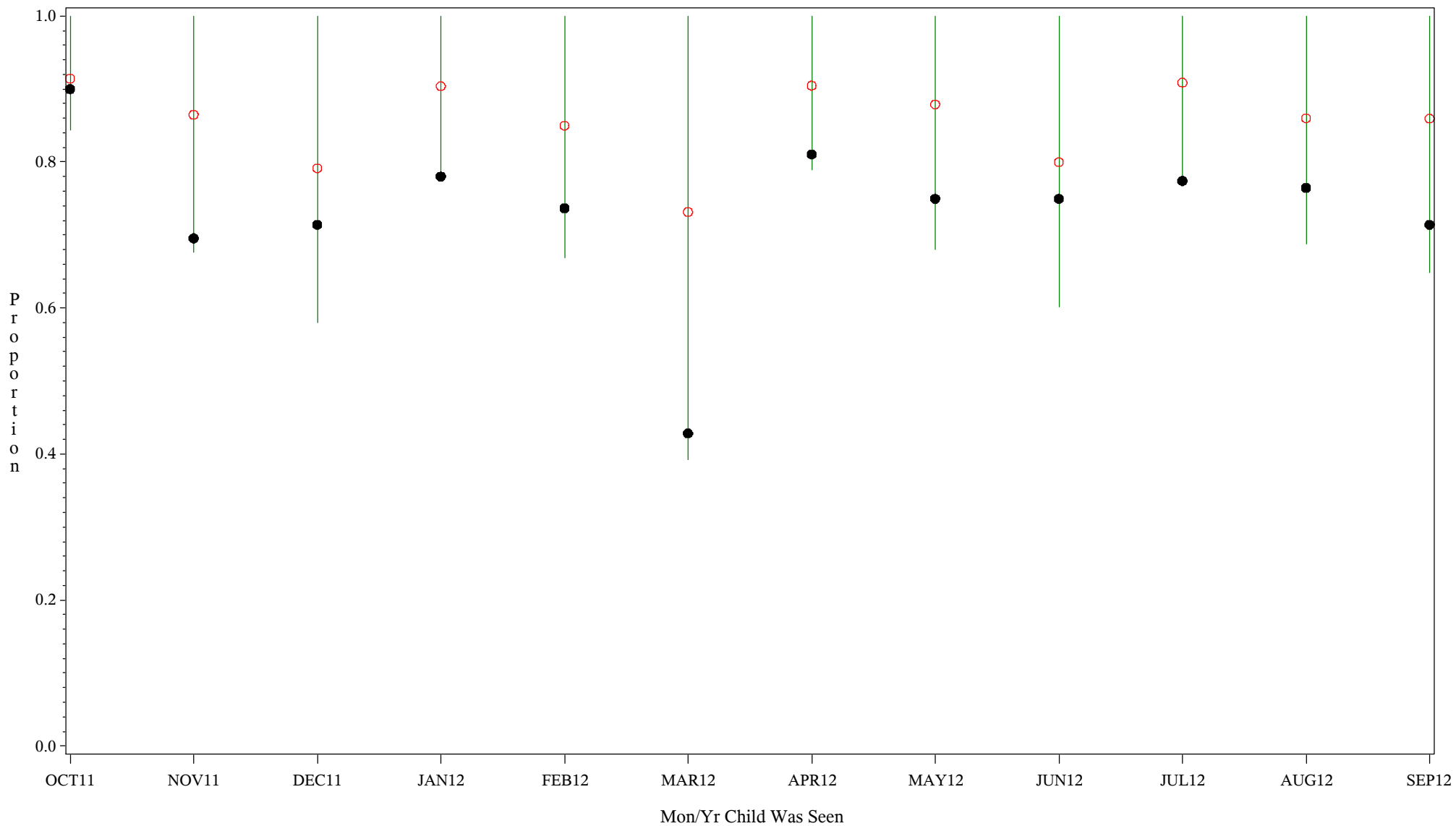
Comp Chart for Up-to-Date Immuniz (HEPB) (#5133)

Time Period: October 1, 2011 - September 30, 2012

Denominator=Children 7-15 months, Numerator=Up-to-Date Shots

Chart created: Thursday, 29NOV2012

hospital=Winnebago - Aberdeen



PLOT ● Organization's Observed Rate ○ Expected Rate-Comparison Group

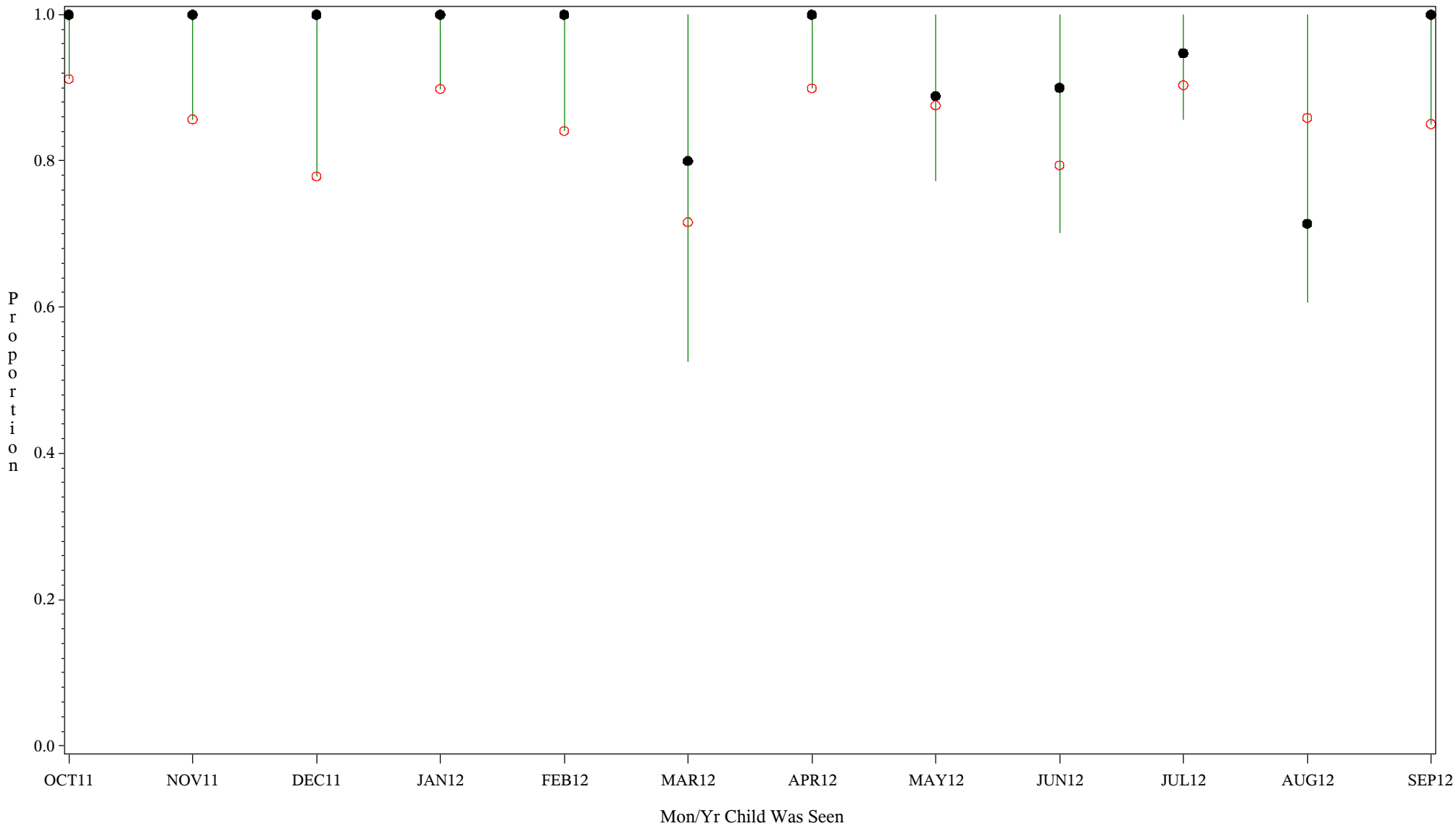
Comp Chart for Up-to-Date Immuniz (HEPB) (#5133)

Time Period: October 1, 2011 - September 30, 2012

Denominator=Children 7-15 months, Numerator=Up-to-Date Shots

Chart created: Thursday, 29NOV2012

hospital=Mescalero - Albuquerque



PLOT ● Organization's Observed Rate ○ Expected Rate-Comparison Group

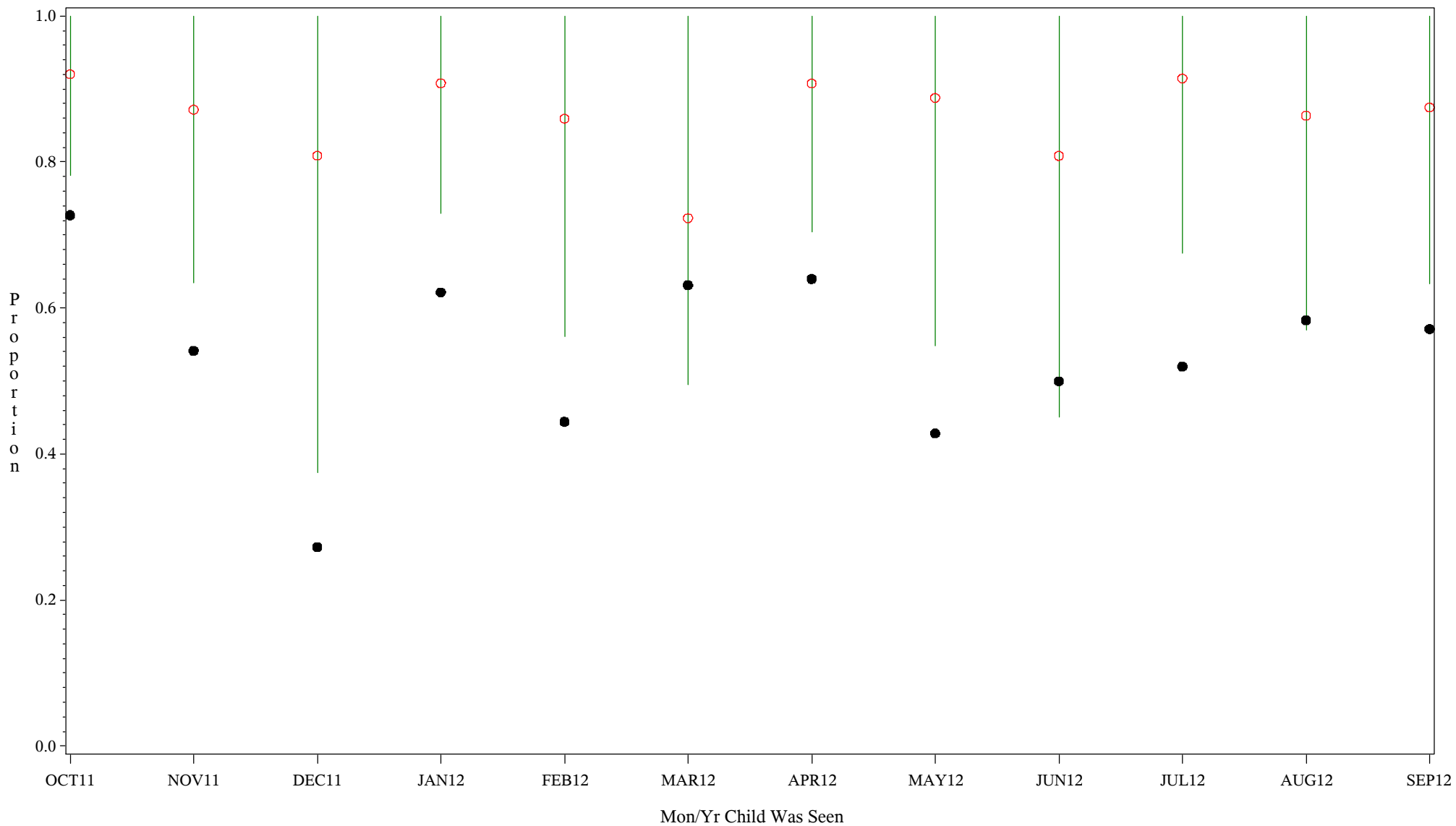
Comp Chart for Up-to-Date Immuniz (HEPB) (#5133)

Time Period: October 1, 2011 - September 30, 2012

Denominator=Children 7-15 months, Numerator=Up-to-Date Shots

Chart created: Thursday, 29NOV2012

hospital=Santa Fe - Albuquerque



PLOT ● Organization's Observed Rate ○ Expected Rate-Comparison Group

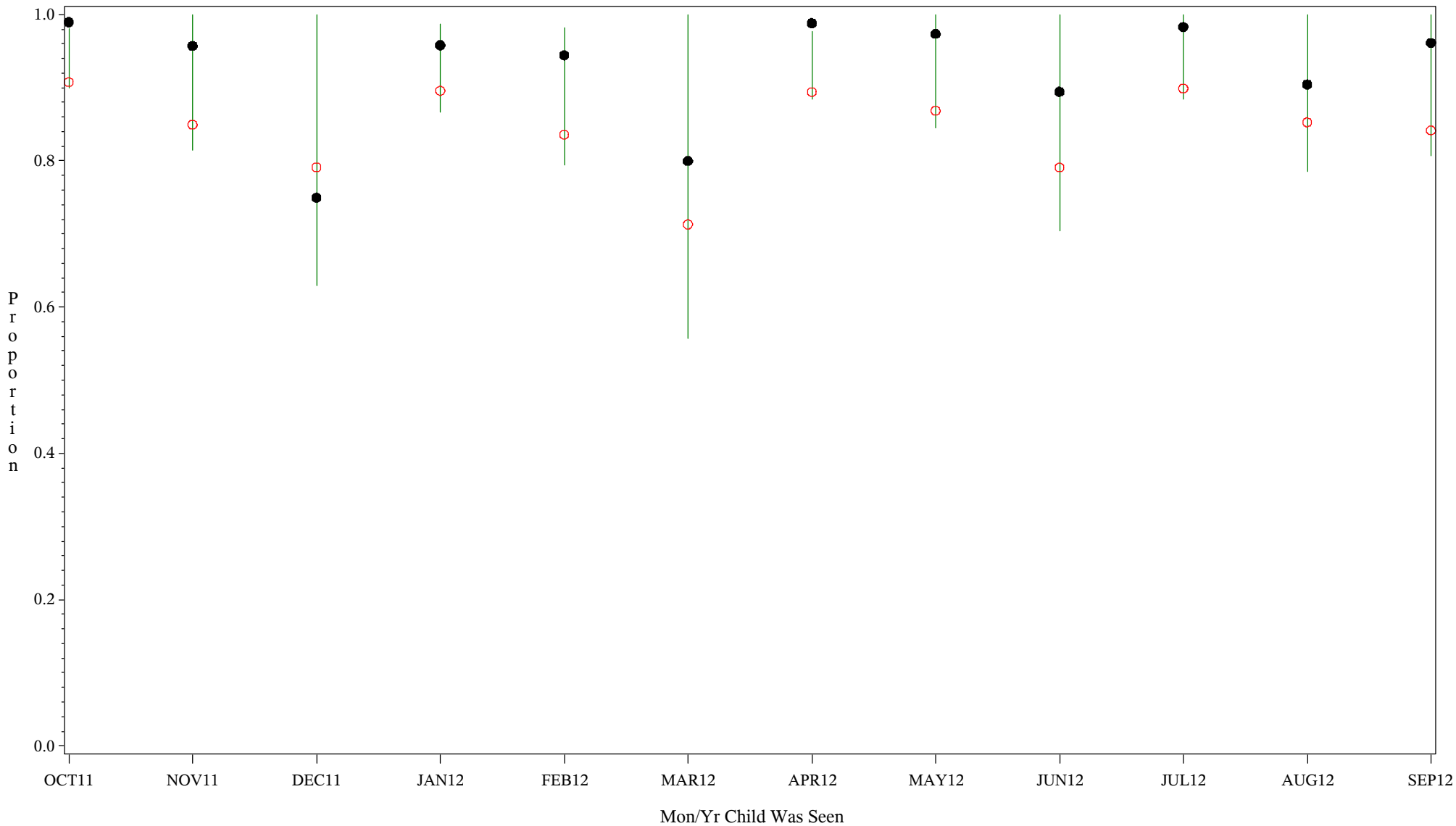
Comp Chart for Up-to-Date Immuniz (HEPB) (#5133)

Time Period: October 1, 2011 - September 30, 2012

Denominator=Children 7-15 months, Numerator=Up-to-Date Shots

Chart created: Thursday, 29NOV2012

hospital=Zuni - Albuquerque



PLOT ● Organization's Observed Rate ○ Expected Rate-Comparison Group

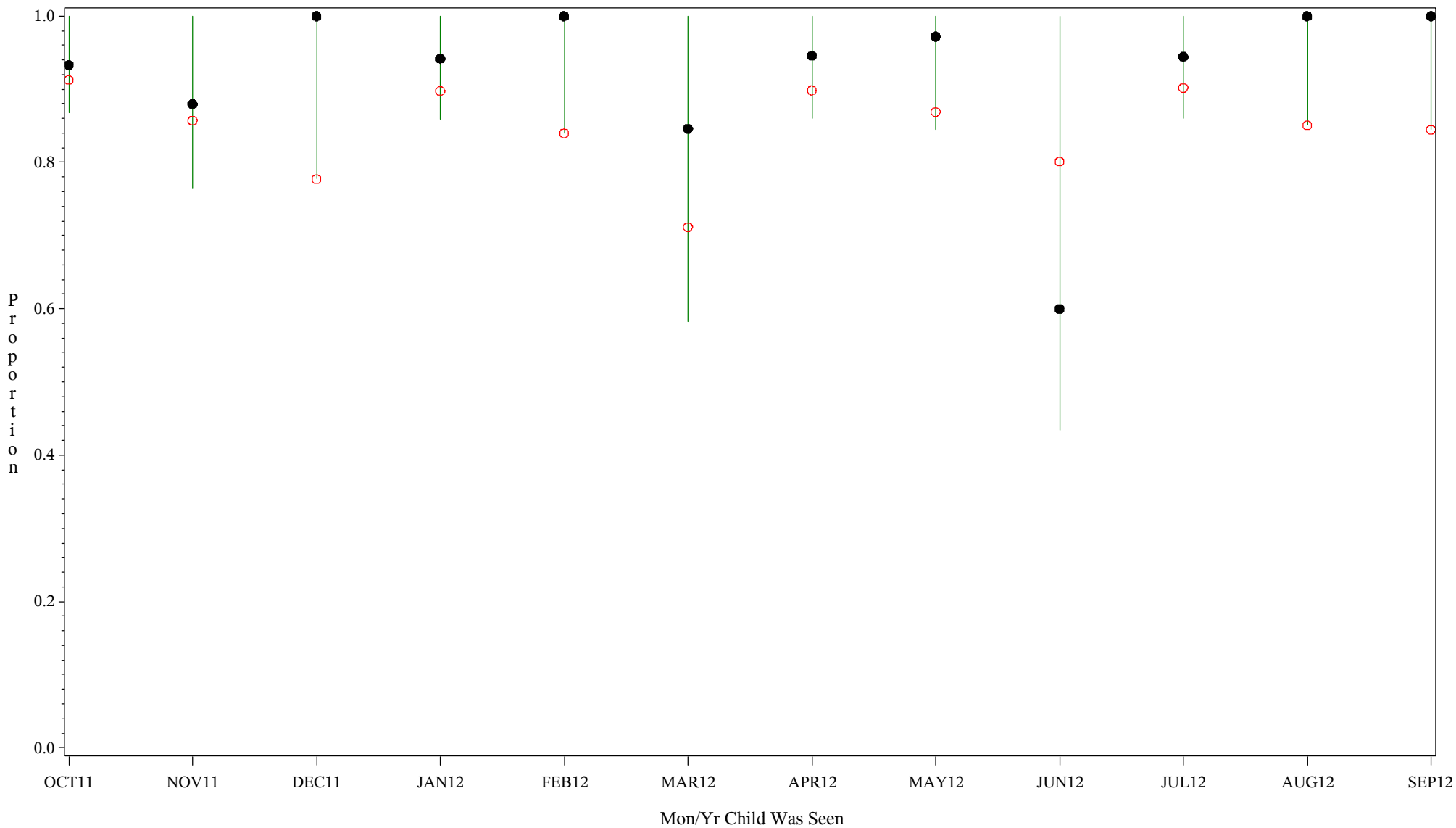
Comp Chart for Up-to-Date Immuniz (HEPB) (#5133)

Time Period: October 1, 2011 - September 30, 2012

Denominator=Children 7-15 months, Numerator=Up-to-Date Shots

Chart created: Thursday, 29NOV2012

hospital=Barrow - Alaska



PLOT ● Organization's Observed Rate ○ Expected Rate-Comparison Group

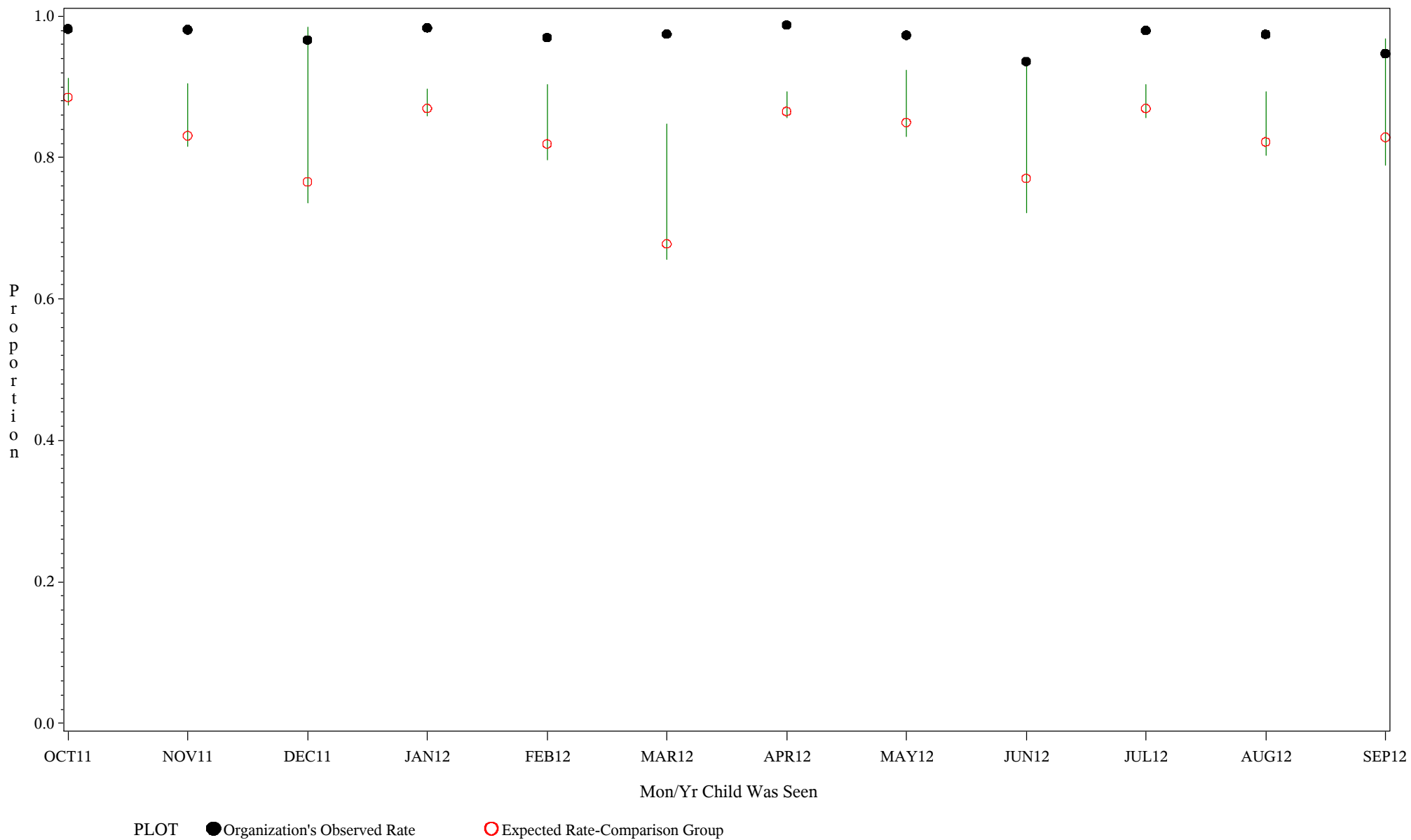
Comp Chart for Up-to-Date Immuniz (HEPB) (#5133)

Time Period: October 1, 2011 - September 30, 2012

Denominator=Children 7-15 months, Numerator=Up-to-Date Shots

Chart created: Thursday, 29NOV2012

hospital=YK Health - Alaska



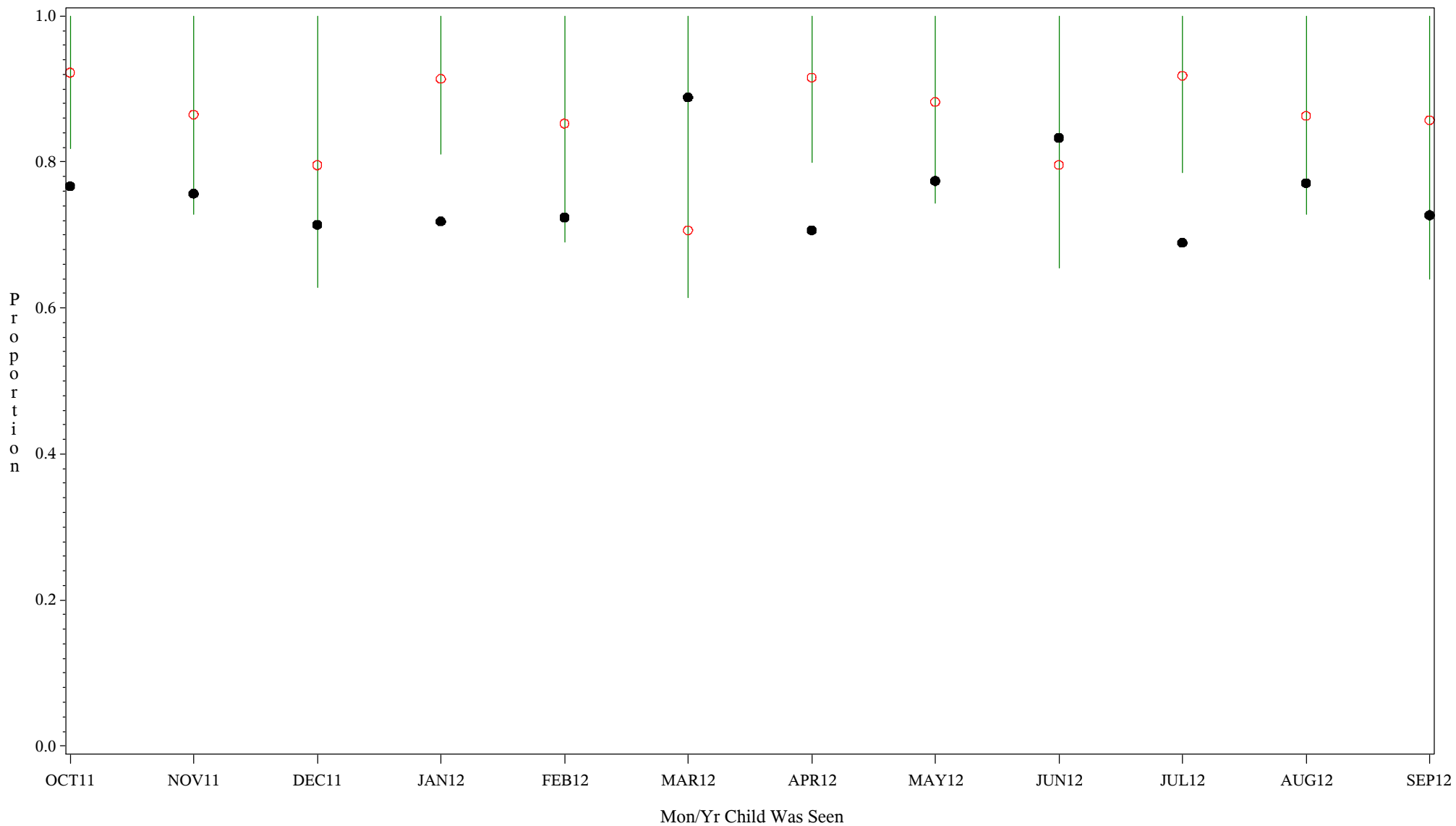
Comp Chart for Up-to-Date Immuniz (HEPB) (#5133)

Time Period: October 1, 2011 - September 30, 2012

Denominator=Children 7-15 months, Numerator=Up-to-Date Shots

Chart created: Thursday, 29NOV2012

hospital=Maniilaq - Alaska



PLOT ● Organization's Observed Rate ○ Expected Rate-Comparison Group

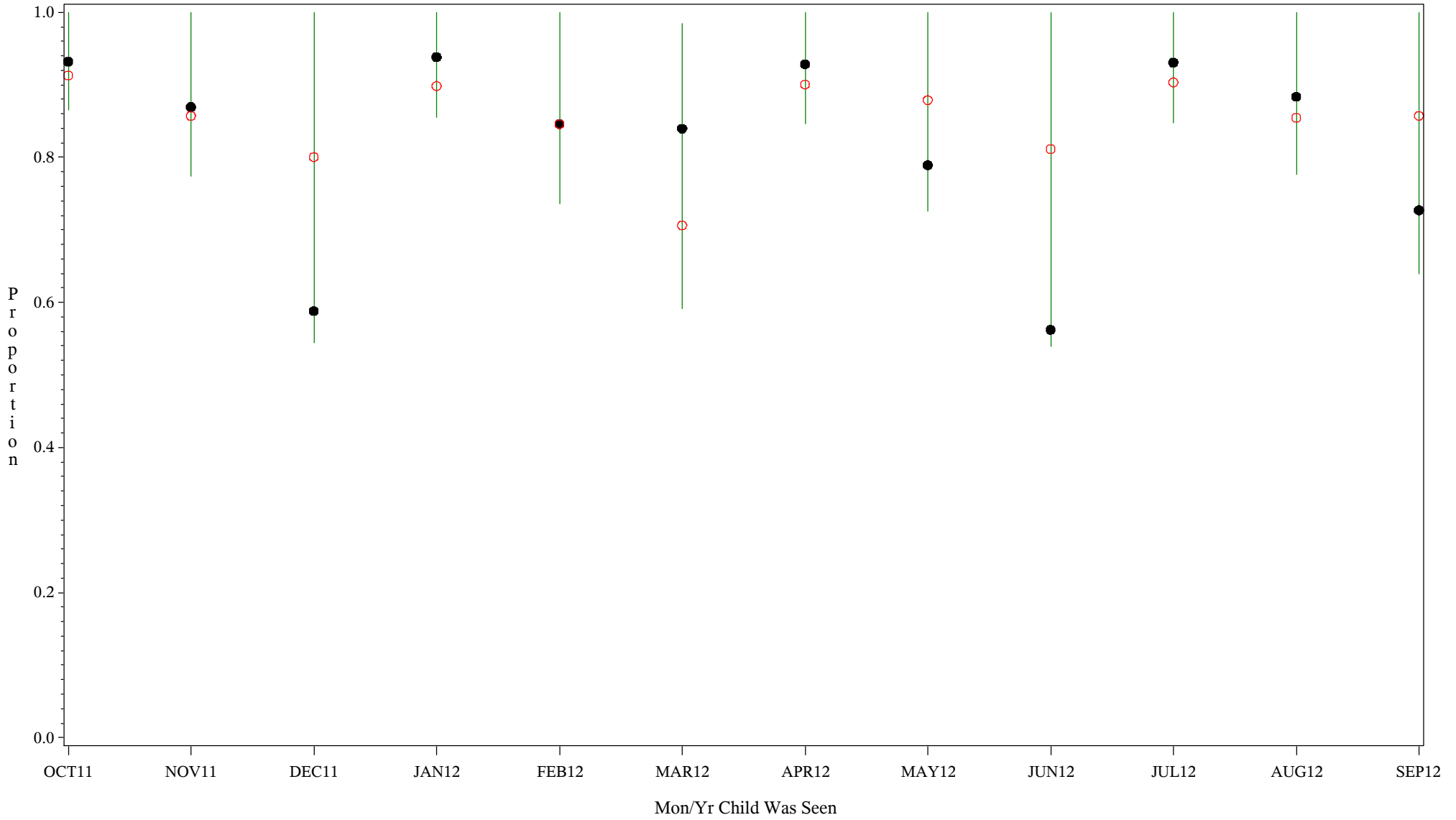
Comp Chart for Up-to-Date Immuniz (HEPB) (#5133)

Time Period: October 1, 2011 - September 30, 2012

Denominator=Children 7-15 months, Numerator=Up-to-Date Shots

Chart created: Thursday, 29NOV2012

hospital=Lawton - Oklahoma



PLOT ● Organization's Observed Rate ○ Expected Rate-Comparison Group

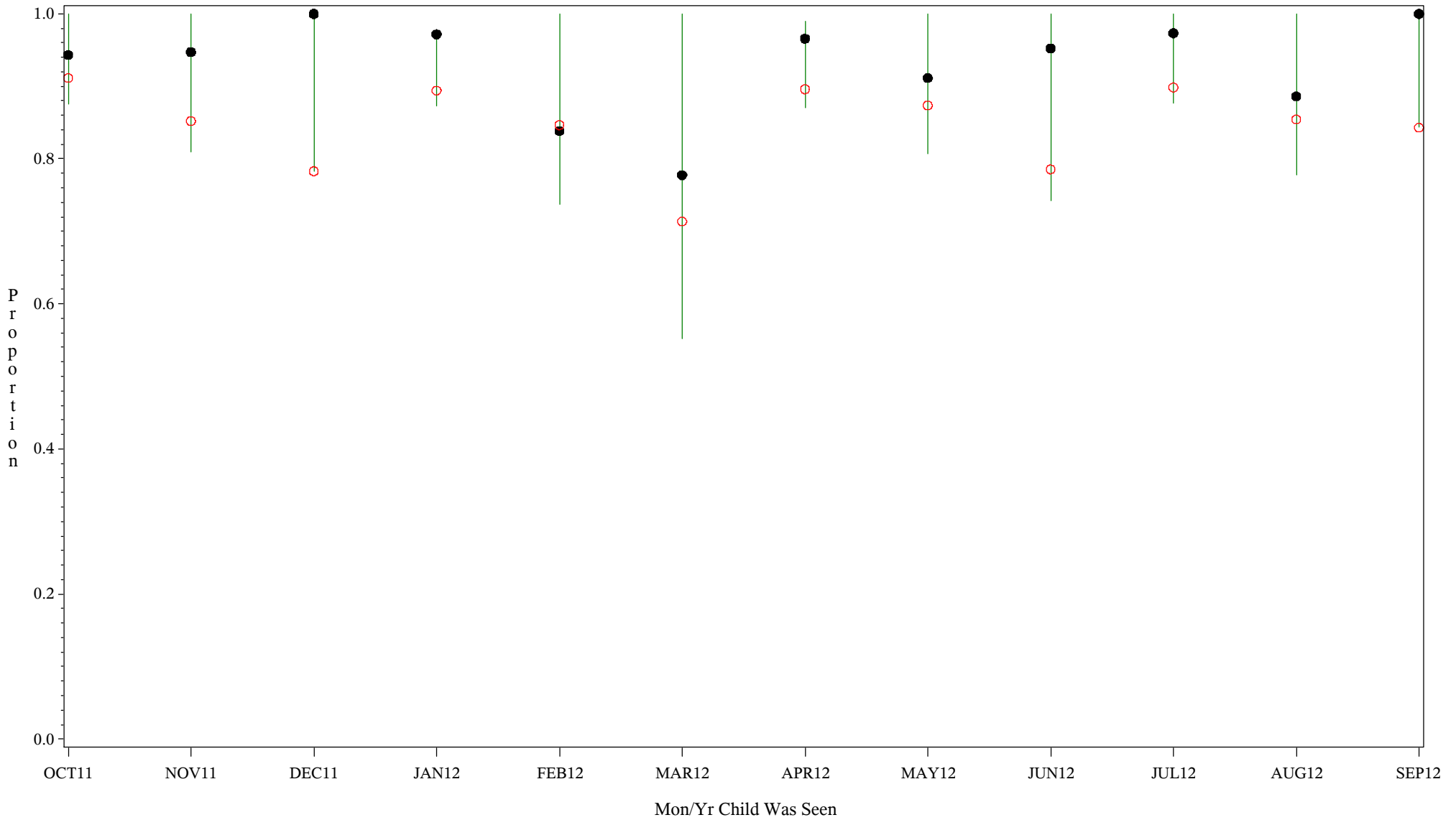
Comp Chart for Up-to-Date Immuniz (HEPB) (#5133)

Time Period: October 1, 2011 - September 30, 2012

Denominator=Children 7-15 months, Numerator=Up-to-Date Shots

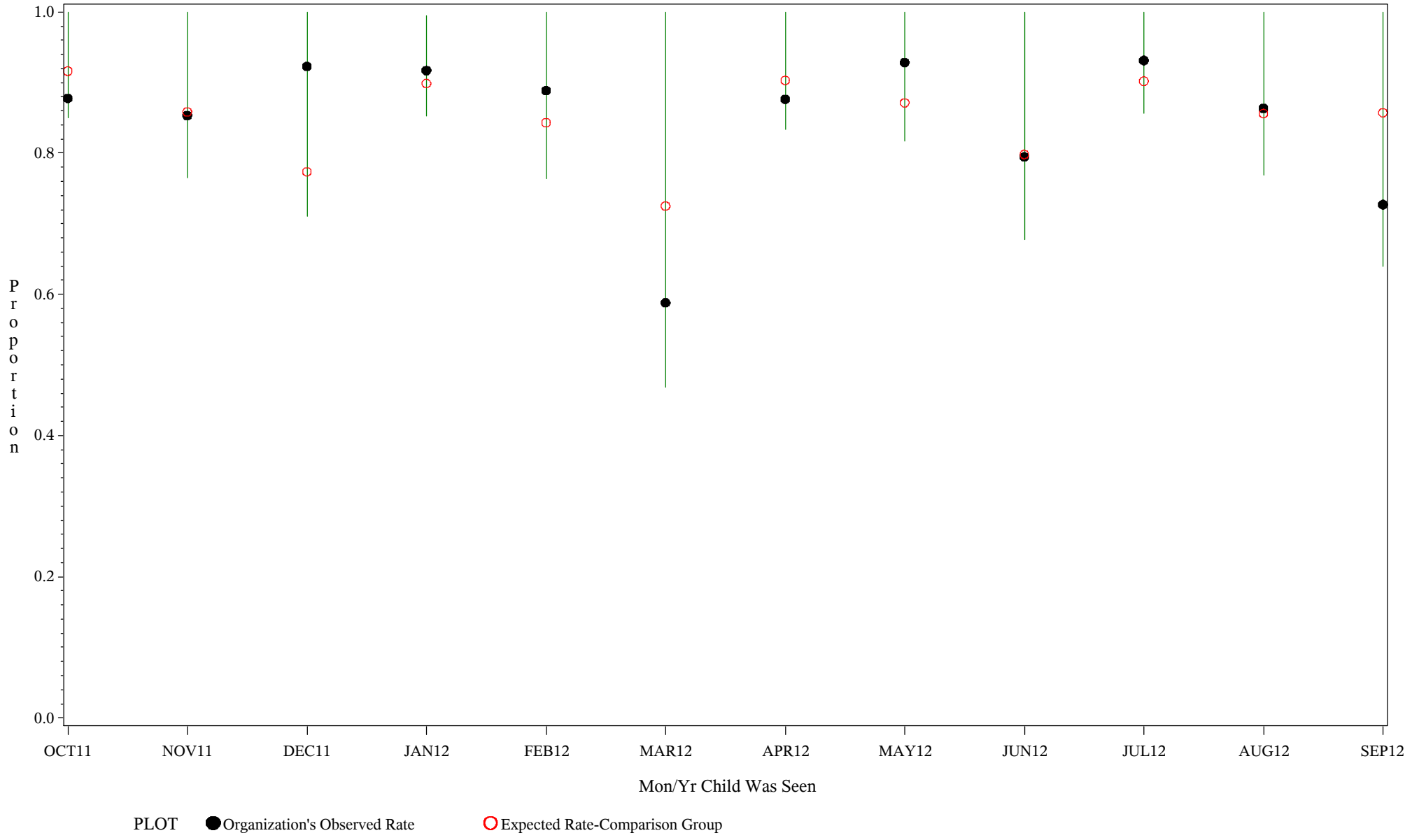
Chart created: Thursday, 29NOV2012

hospital=Choctaw Hosp - Nashville



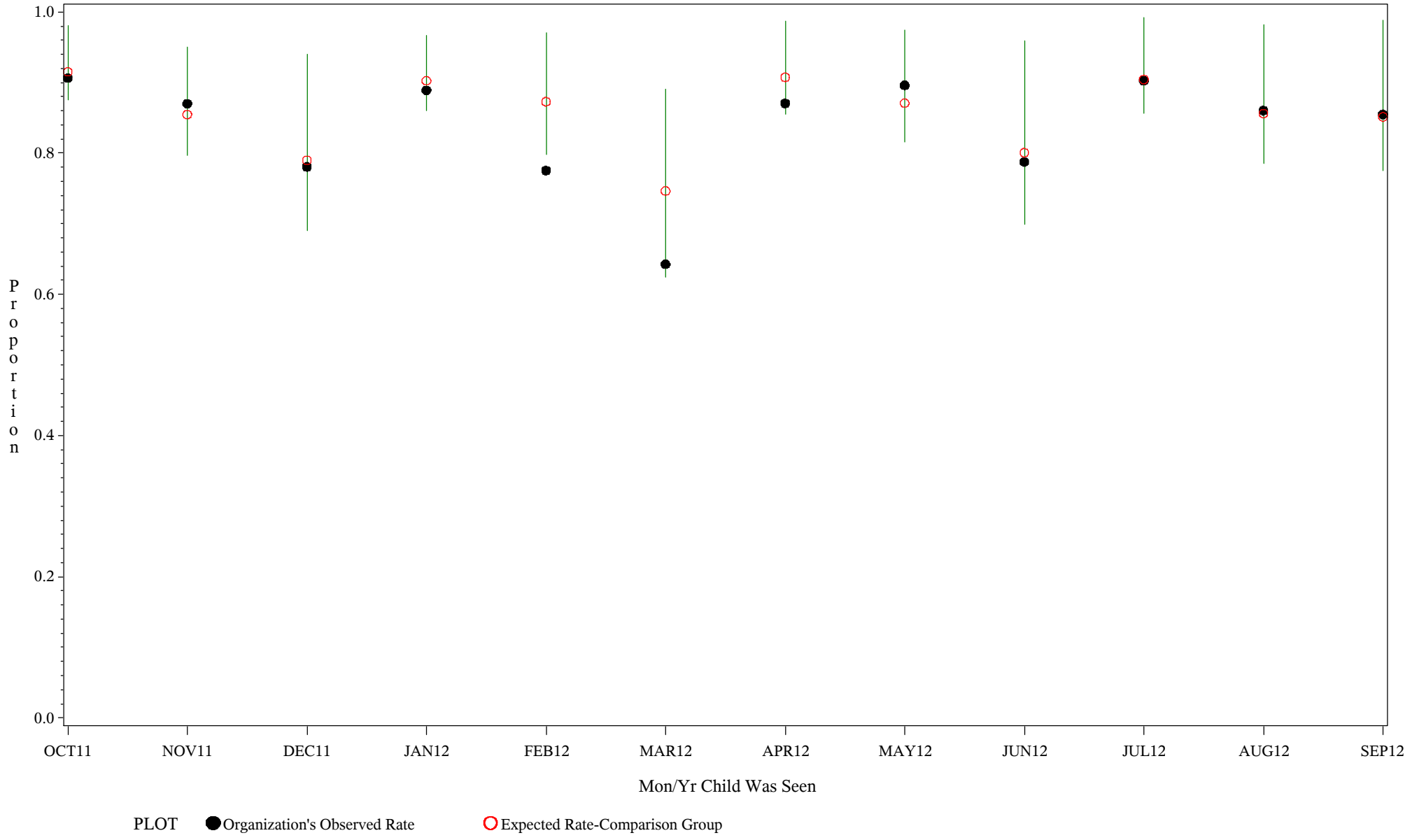
PLOT ● Organization's Observed Rate ○ Expected Rate-Comparison Group

Comp Chart for Up-to-Date Immuniz (HEPB) (#5133)
Time Period: October 1, 2011 - September 30, 2012
Denominator=Children 7-15 months, Numerator=Up-to-Date Shots
Chart created: Thursday, 29NOV2012
hospital=San Carlos - Phoenix



Source: ORYX2.rate5133

Comp Chart for Up-to-Date Immuniz (HEPB) (#5133)
Time Period: October 1, 2011 - September 30, 2012
Denominator=Children 7-15 months, Numerator=Up-to-Date Shots
Chart created: Thursday, 29NOV2012
hospital=GIMC - Navajo



Source: ORYX2.rate5133