

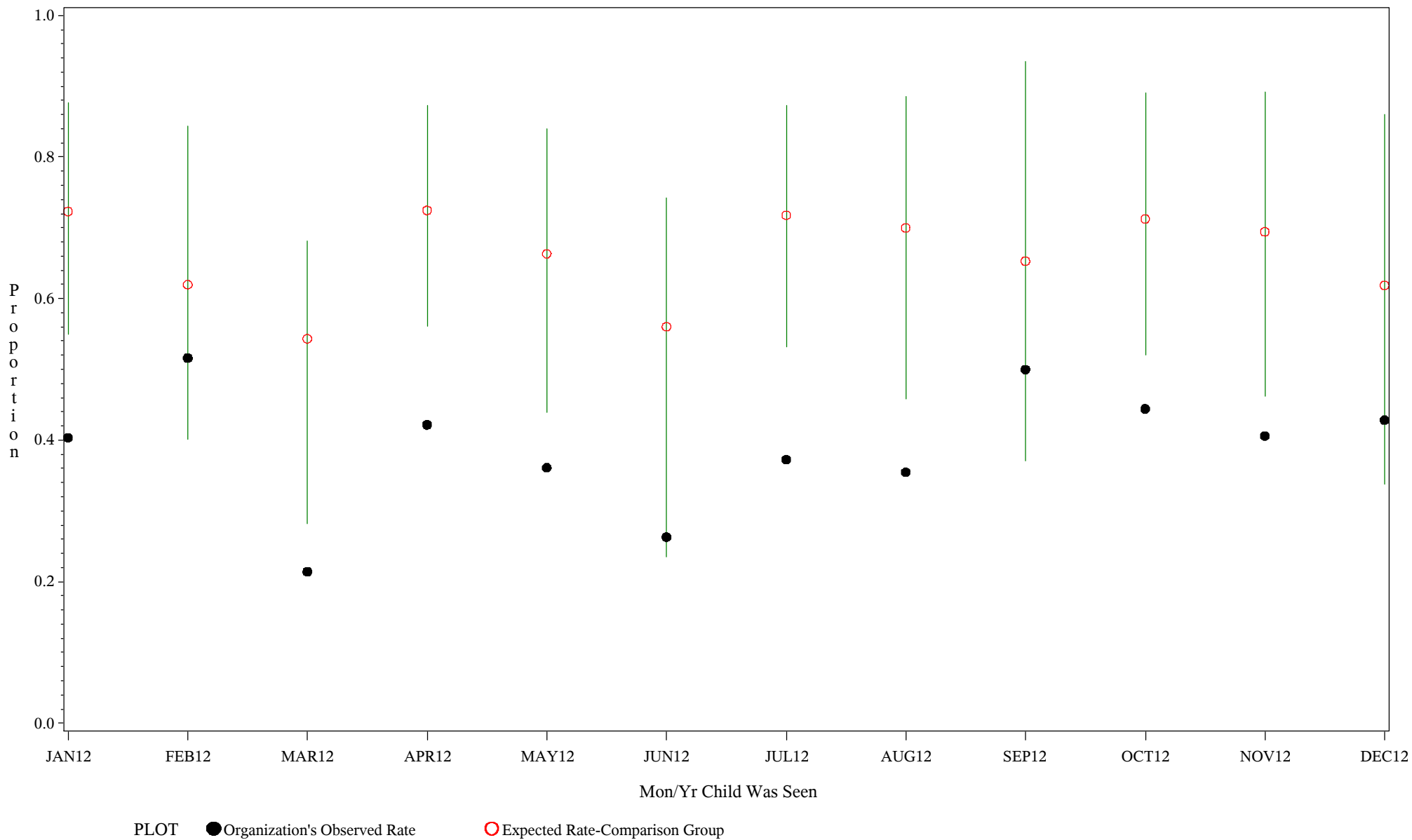
Comp Chart for Up-to-Date Immuniz (HIB) (#5133)

Time Period: January 1, 2012 - December 31, 2012

Denominator=Children 7-15 months, Numerator=Up-to-Date Shots

Chart created: Wednesday, 20FEB2013

hospital=Sells - Tucson



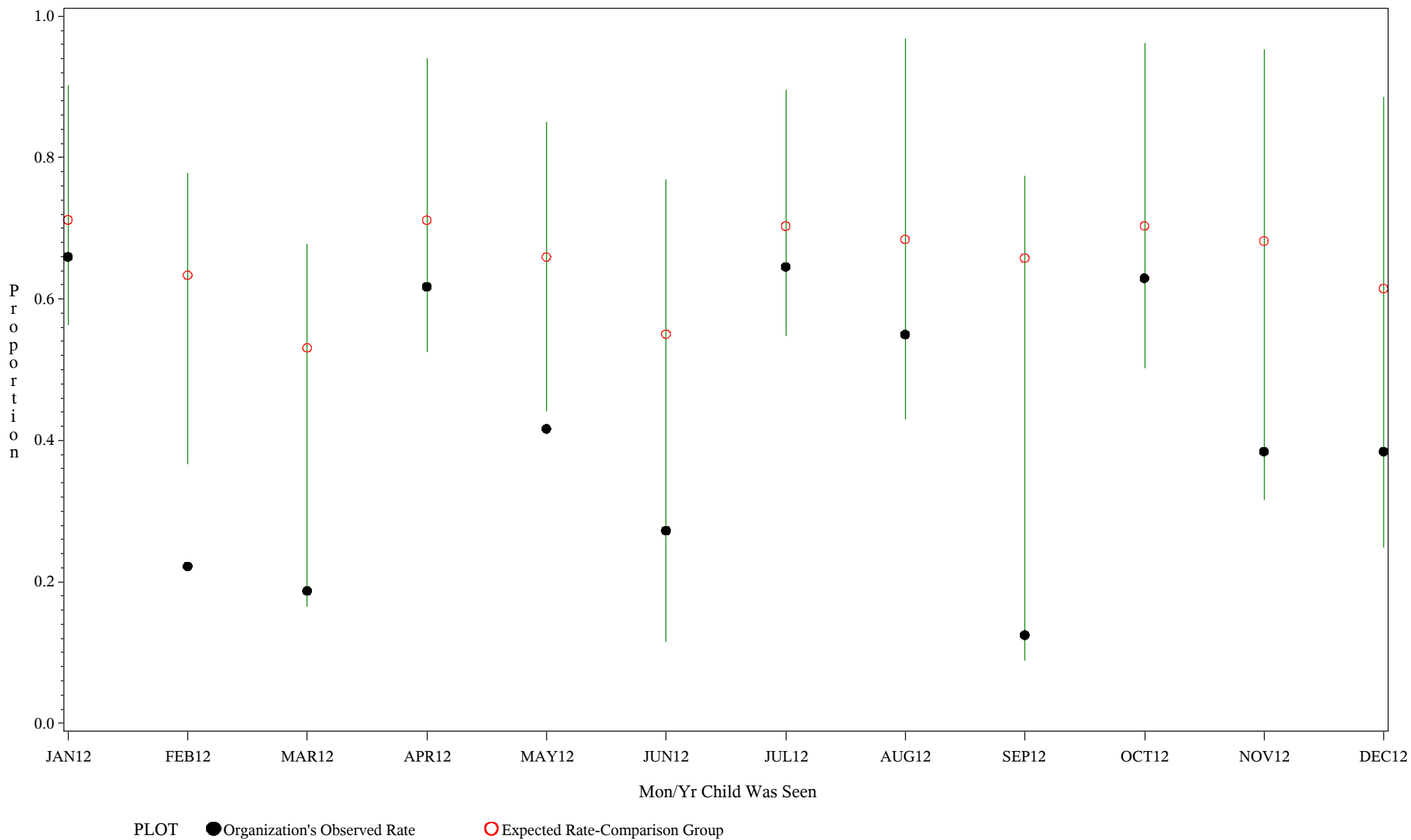
Comp Chart for Up-to-Date Immuniz (HIB) (#5133)

Time Period: January 1, 2012 - December 31, 2012

Denominator=Children 7-15 months, Numerator=Up-to-Date Shots

Chart created: Wednesday, 20FEB2013

hospital=Ft. Yates - Aberdeen



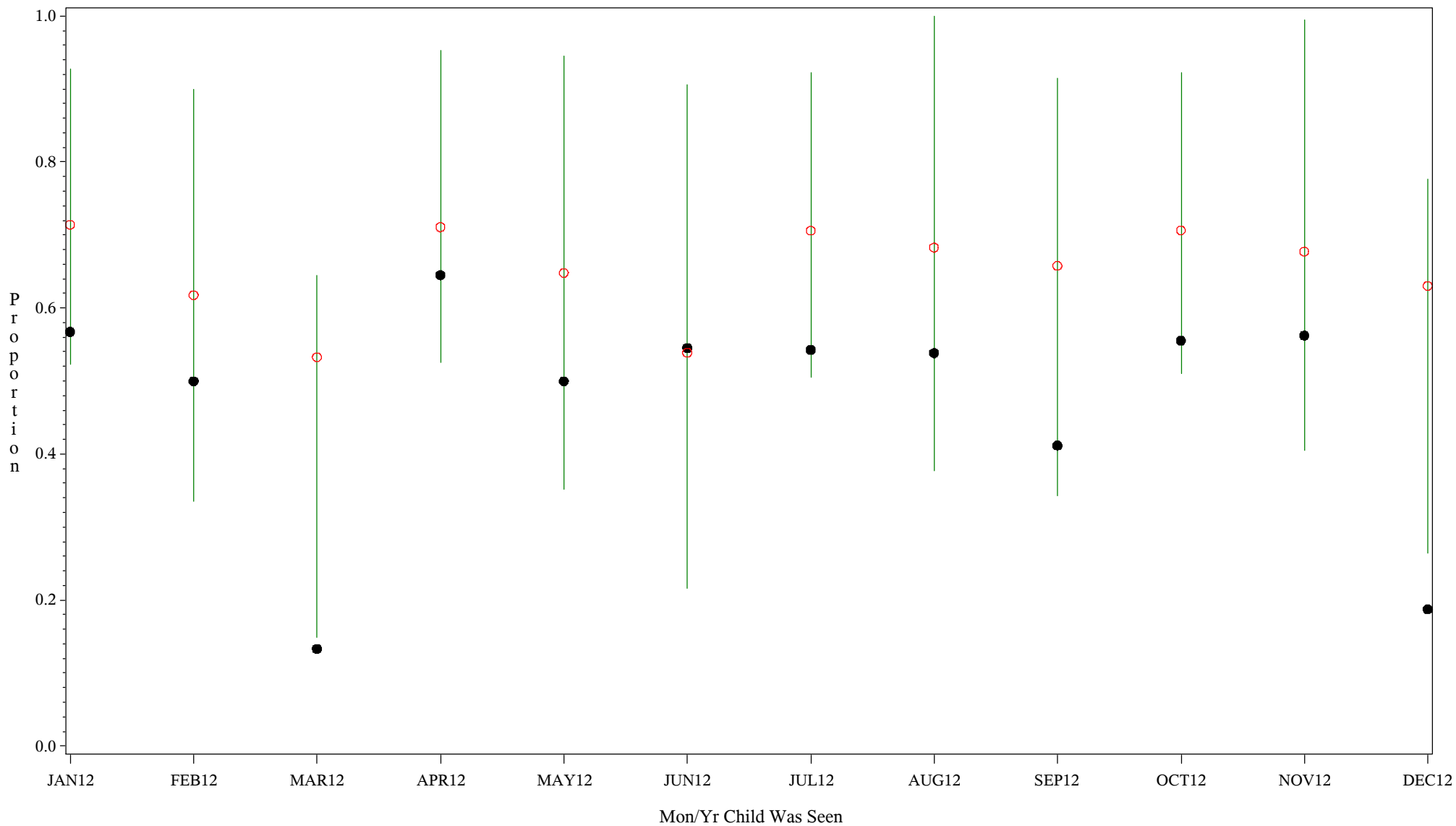
Comp Chart for Up-to-Date Immuniz (HIB) (#5133)

Time Period: January 1, 2012 - December 31, 2012

Denominator=Children 7-15 months, Numerator=Up-to-Date Shots

Chart created: Wednesday, 20FEB2013

hospital=Winnebago - Aberdeen



PLOT ● Organization's Observed Rate ○ Expected Rate-Comparison Group

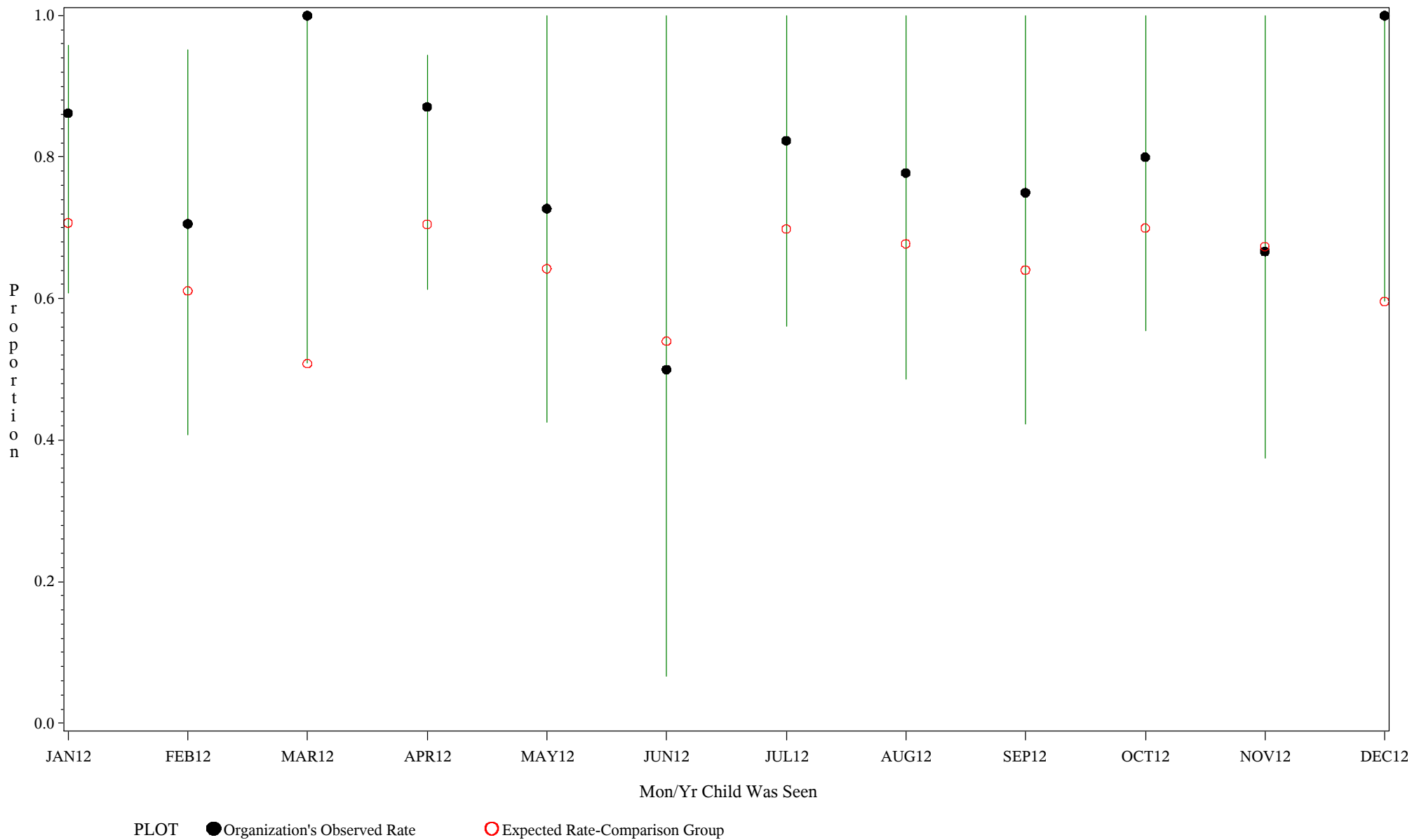
Comp Chart for Up-to-Date Immuniz (HIB) (#5133)

Time Period: January 1, 2012 - December 31, 2012

Denominator=Children 7-15 months, Numerator=Up-to-Date Shots

Chart created: Wednesday, 20FEB2013

hospital=Mescalero - Albuquerque



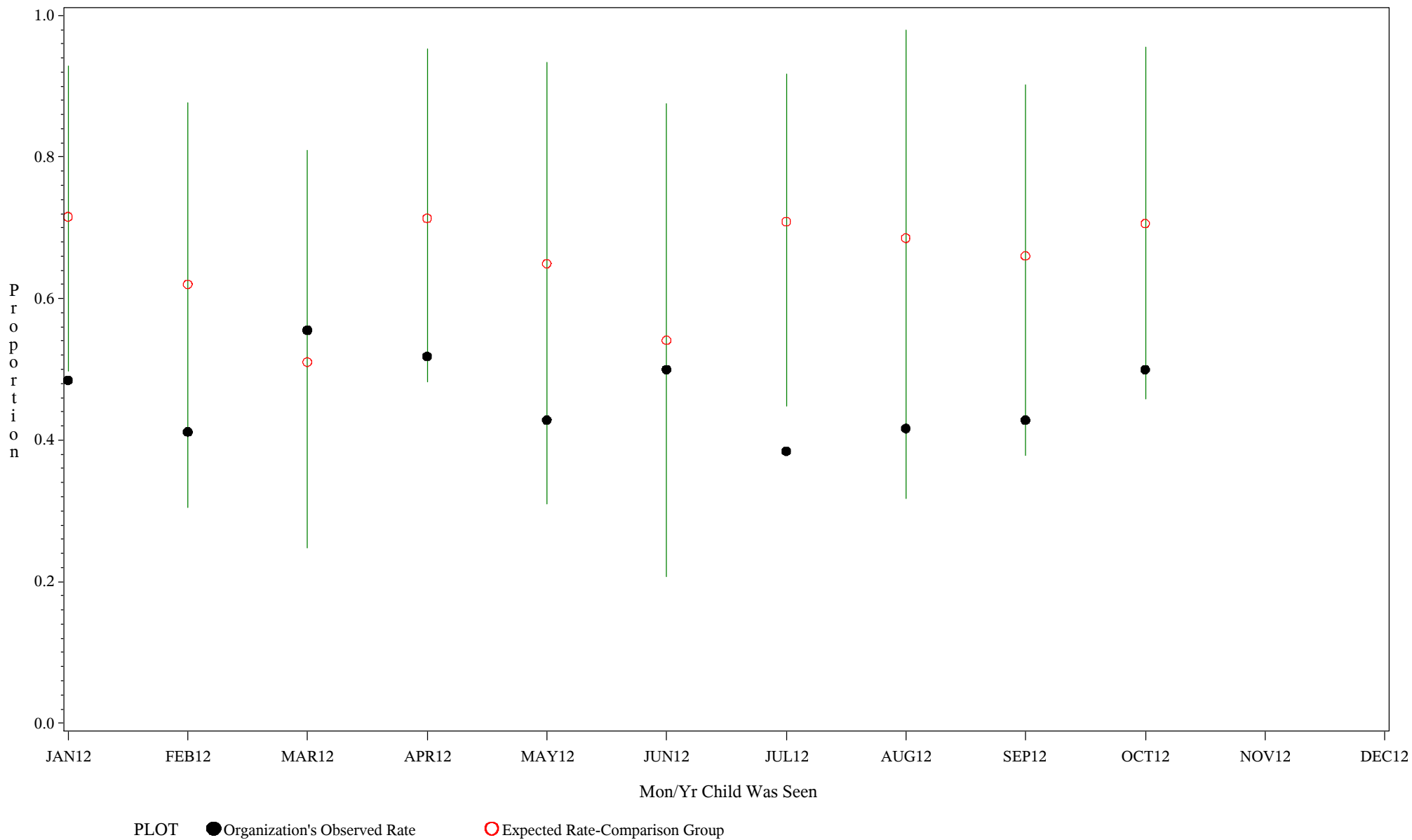
Comp Chart for Up-to-Date Immuniz (HIB) (#5133)

Time Period: January 1, 2012 - December 31, 2012

Denominator=Children 7-15 months, Numerator=Up-to-Date Shots

Chart created: Wednesday, 20FEB2013

hospital=Santa Fe - Albuquerque



Source: ORYX2.rate5133

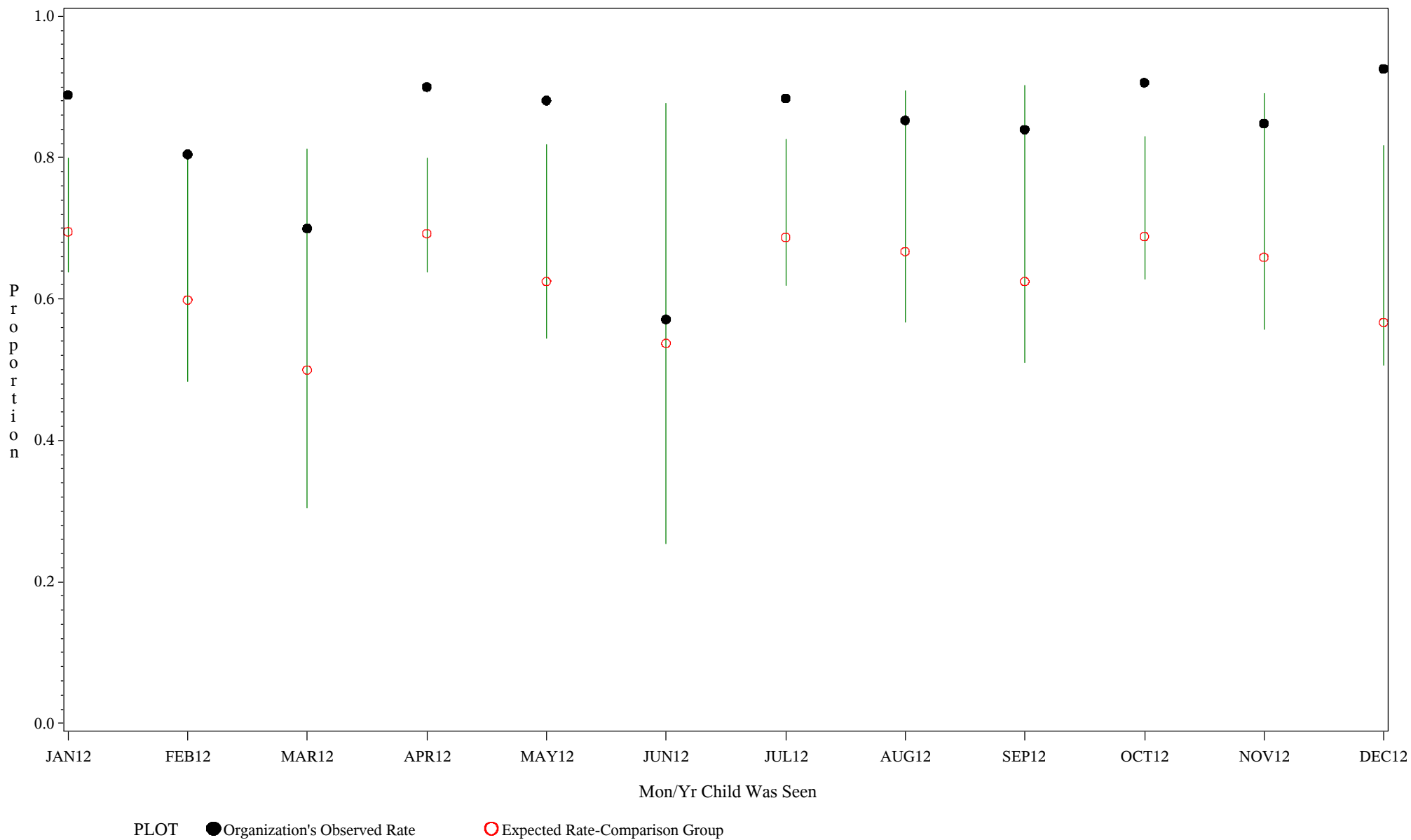
Comp Chart for Up-to-Date Immuniz (HIB) (#5133)

Time Period: January 1, 2012 - December 31, 2012

Denominator=Children 7-15 months, Numerator=Up-to-Date Shots

Chart created: Wednesday, 20FEB2013

hospital=Zuni - Albuquerque



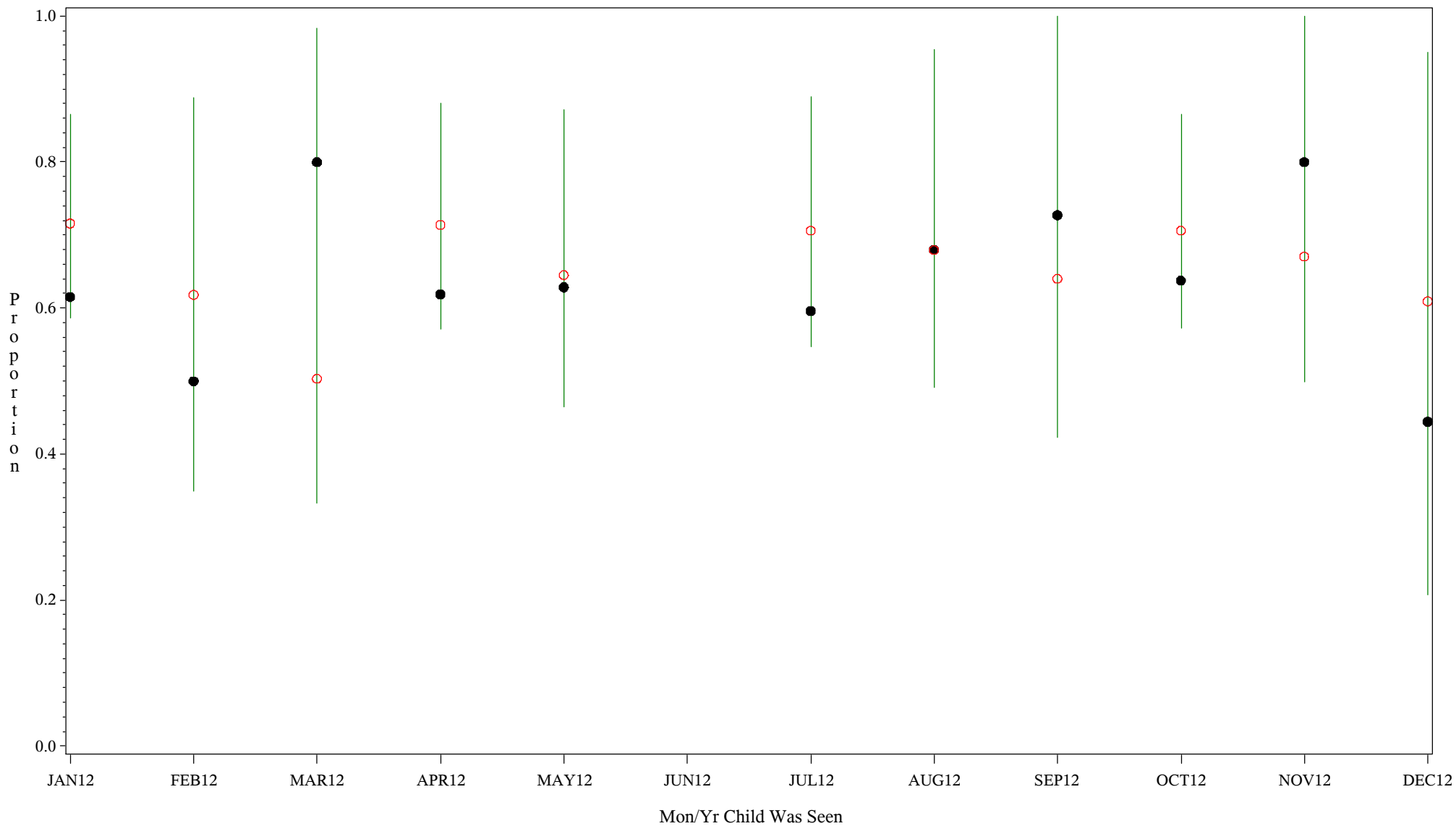
Comp Chart for Up-to-Date Immuniz (HIB) (#5133)

Time Period: January 1, 2012 - December 31, 2012

Denominator=Children 7-15 months, Numerator=Up-to-Date Shots

Chart created: Wednesday, 20FEB2013

hospital=Barrow - Alaska



PLOT ● Organization's Observed Rate ○ Expected Rate-Comparison Group

Source: ORYX2.rate5133

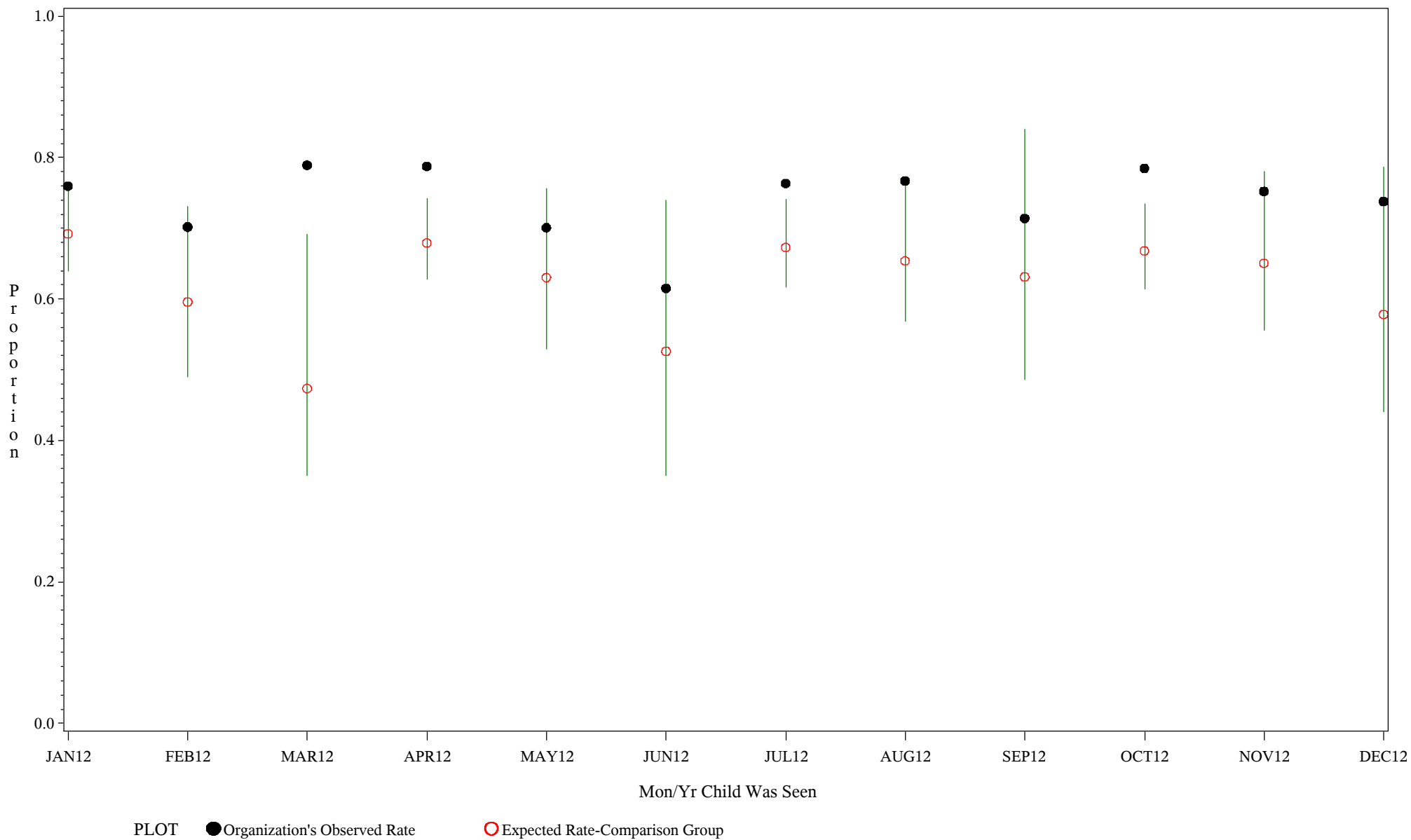
Comp Chart for Up-to-Date Immuniz (HIB) (#5133)

Time Period: January 1, 2012 - December 31, 2012

Denominator=Children 7-15 months, Numerator=Up-to-Date Shots

Chart created: Wednesday, 20FEB2013

hospital=YK Health - Alaska



Source: ORYX2.rate5133

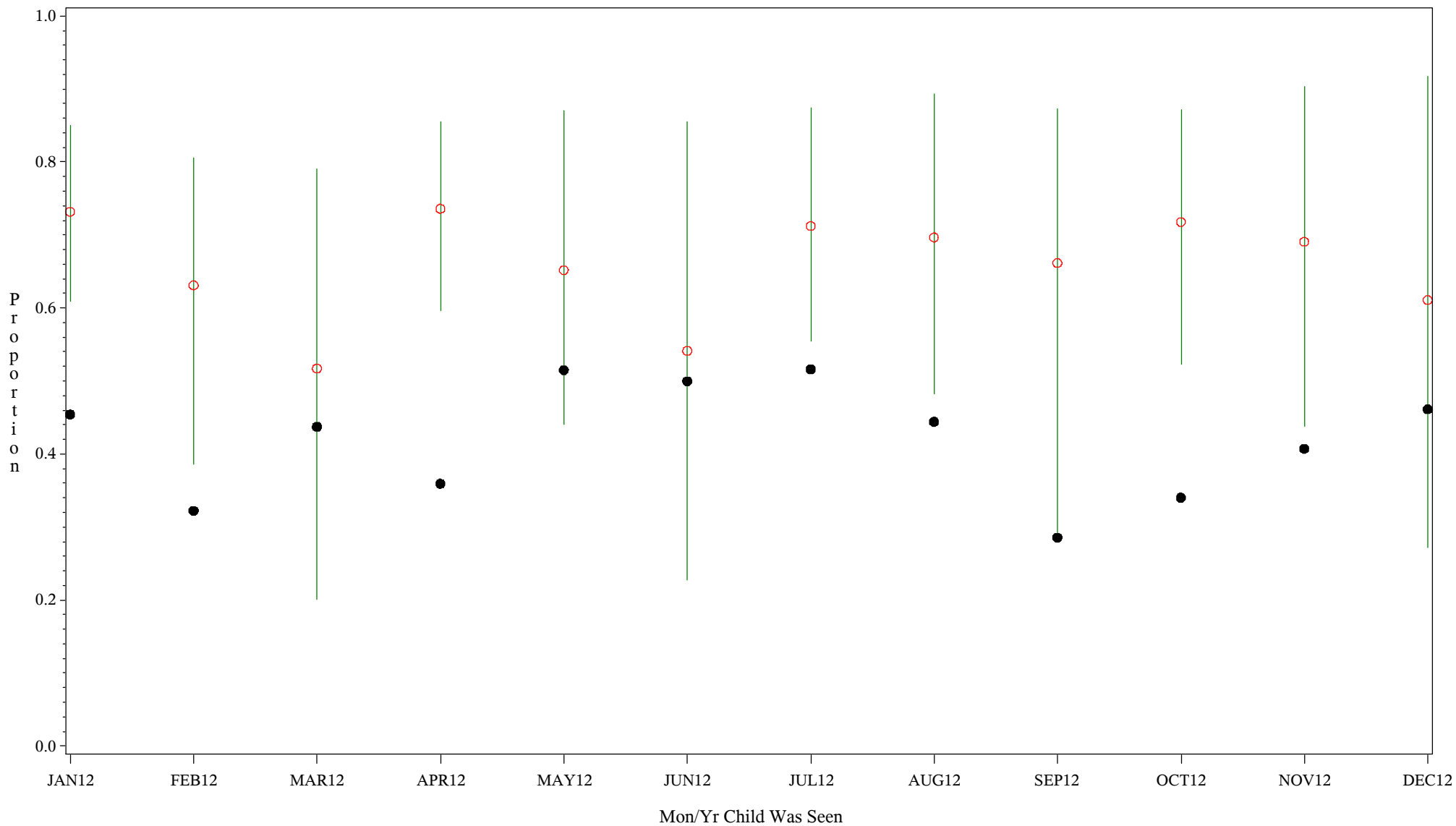
Comp Chart for Up-to-Date Immuniz (HIB) (#5133)

Time Period: January 1, 2012 - December 31, 2012

Denominator=Children 7-15 months, Numerator=Up-to-Date Shots

Chart created: Wednesday, 20FEB2013

hospital=Maniilaq - Alaska



PLOT ● Organization's Observed Rate ○ Expected Rate-Comparison Group

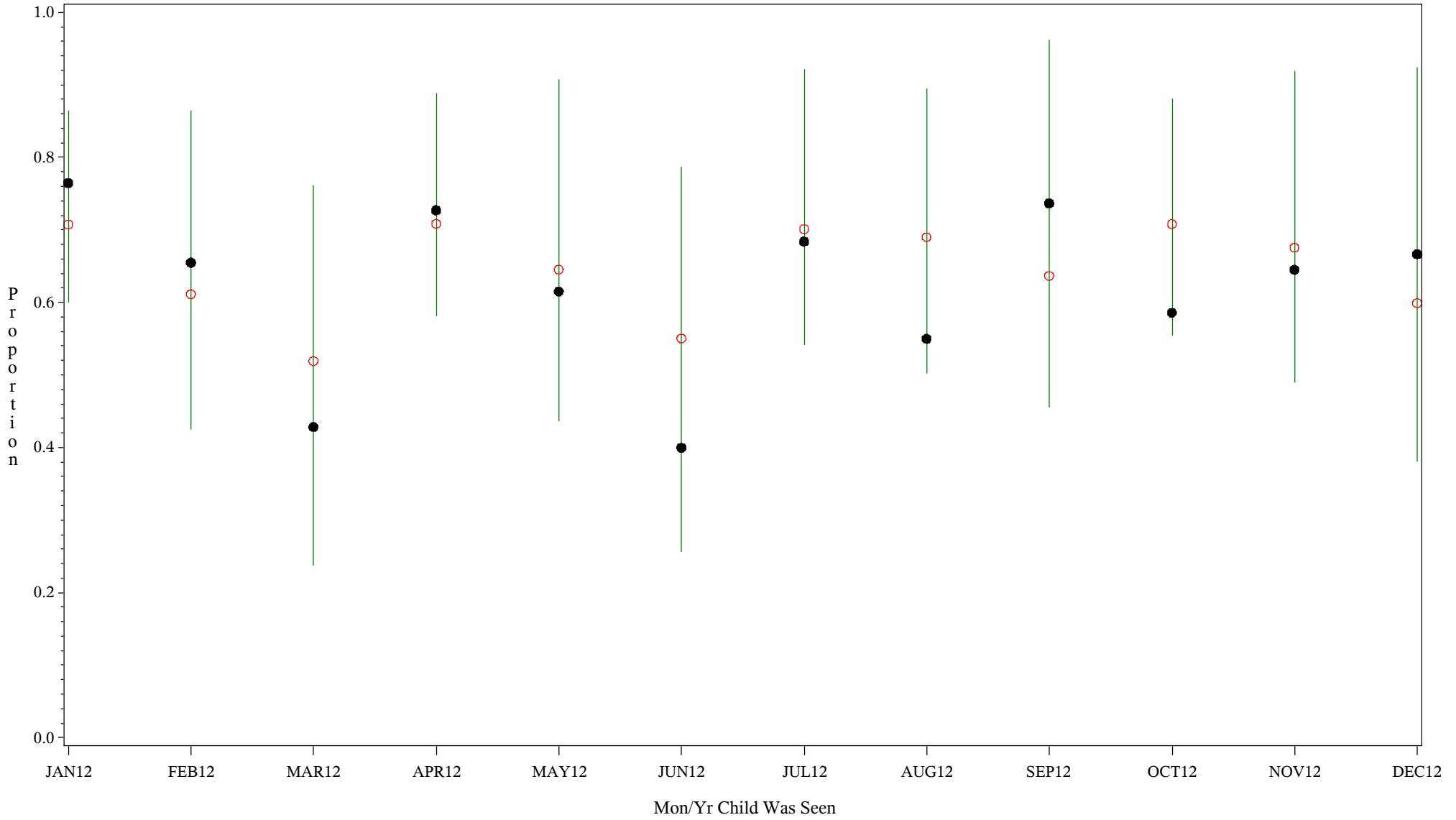
Comp Chart for Up-to-Date Immuniz (HIB) (#5133)

Time Period: January 1, 2012 - December 31, 2012

Denominator=Children 7-15 months, Numerator=Up-to-Date Shots

Chart created: Wednesday, 20FEB2013

hospital=Lawton - Oklahoma



PLOT ● Organization's Observed Rate ○ Expected Rate-Comparison Group

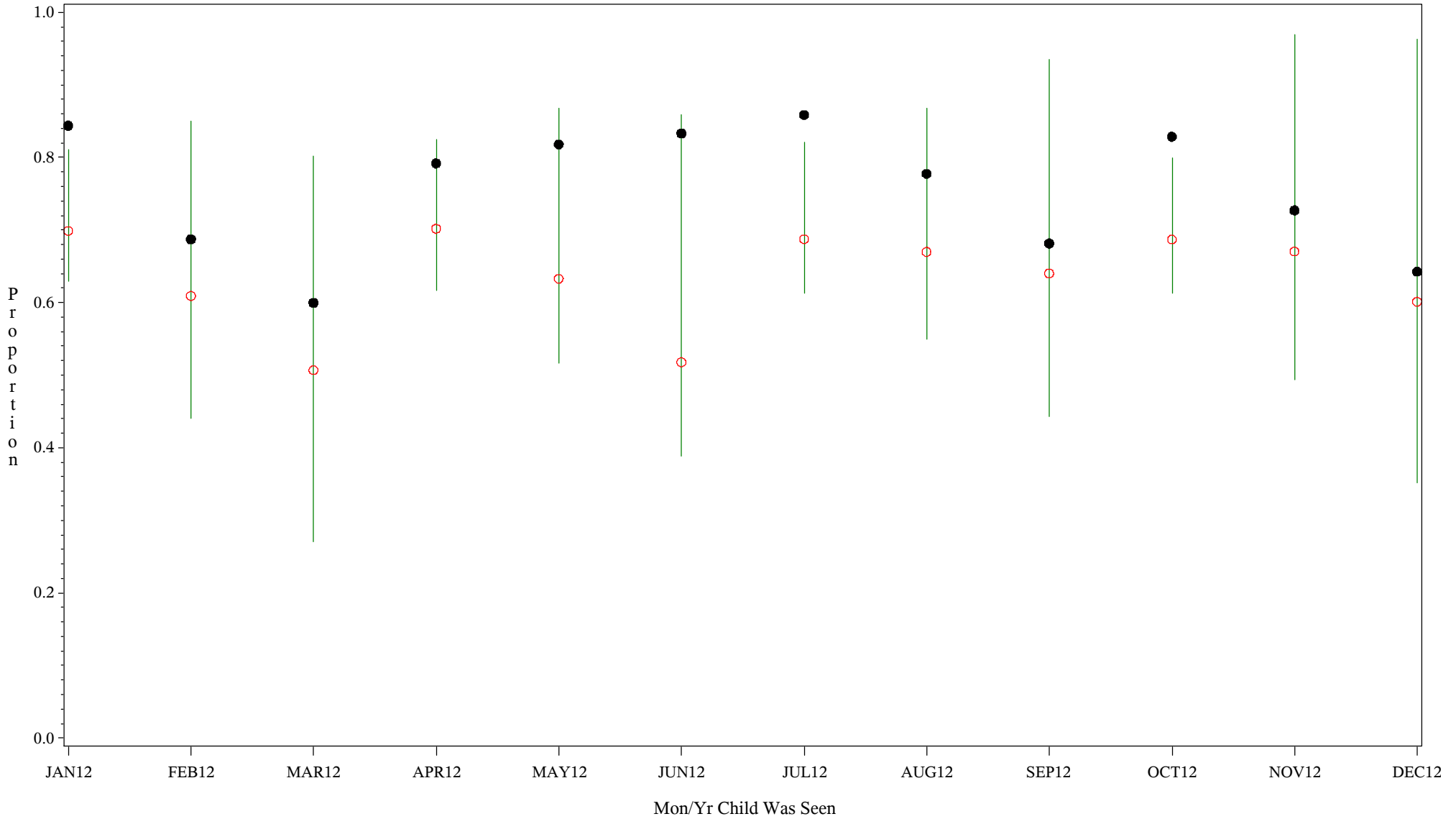
Comp Chart for Up-to-Date Immuniz (HIB) (#5133)

Time Period: January 1, 2012 - December 31, 2012

Denominator=Children 7-15 months, Numerator=Up-to-Date Shots

Chart created: Wednesday, 20FEB2013

hospital=Choctaw Hosp - Nashville



PLOT ● Organization's Observed Rate ○ Expected Rate-Comparison Group

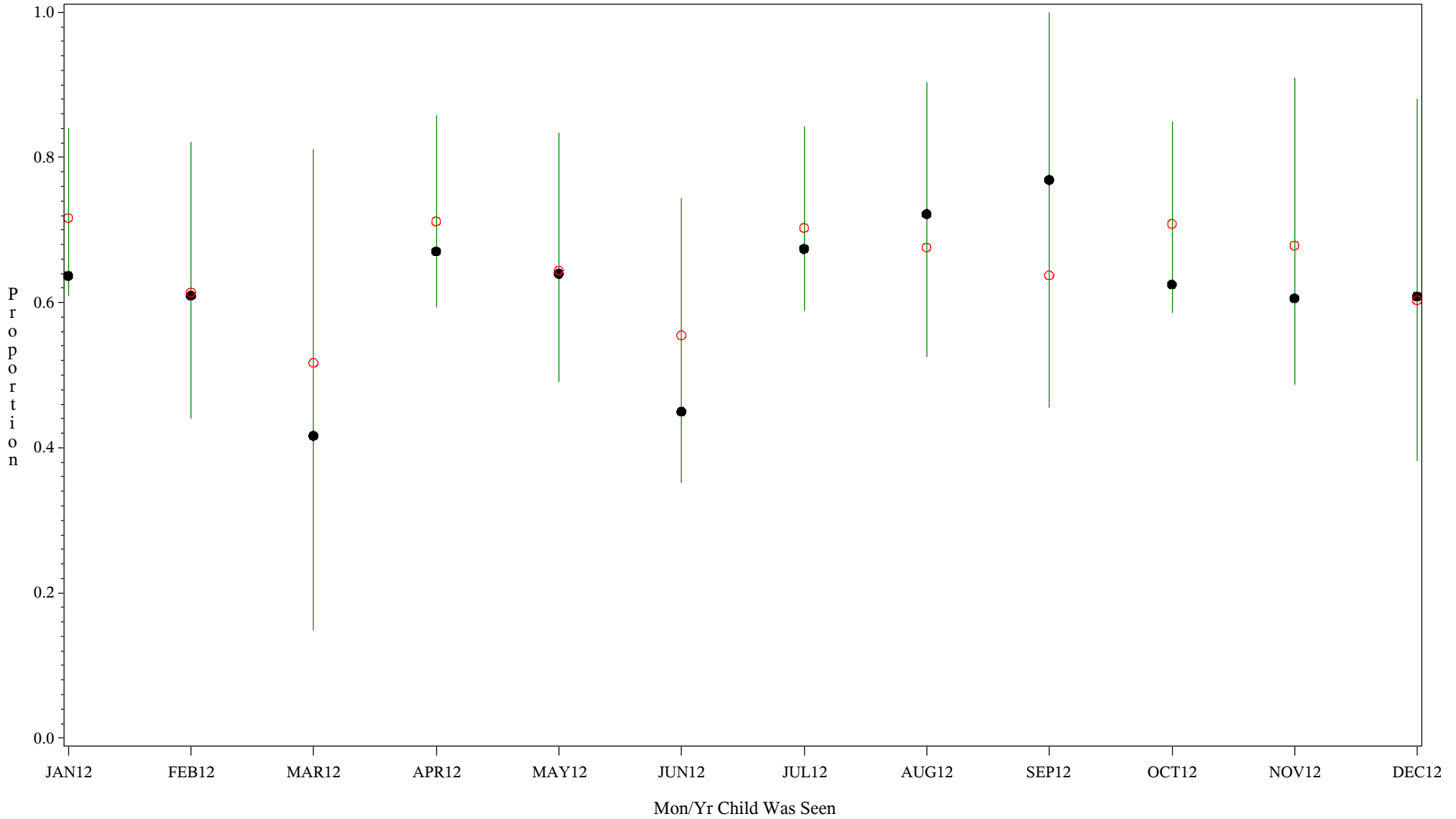
Comp Chart for Up-to-Date Immuniz (HIB) (#5133)

Time Period: January 1, 2012 - December 31, 2012

Denominator=Children 7-15 months, Numerator=Up-to-Date Shots

Chart created: Wednesday, 20FEB2013

hospital=San Carlos - Phoenix



PLOT ● Organization's Observed Rate ○ Expected Rate-Comparison Group

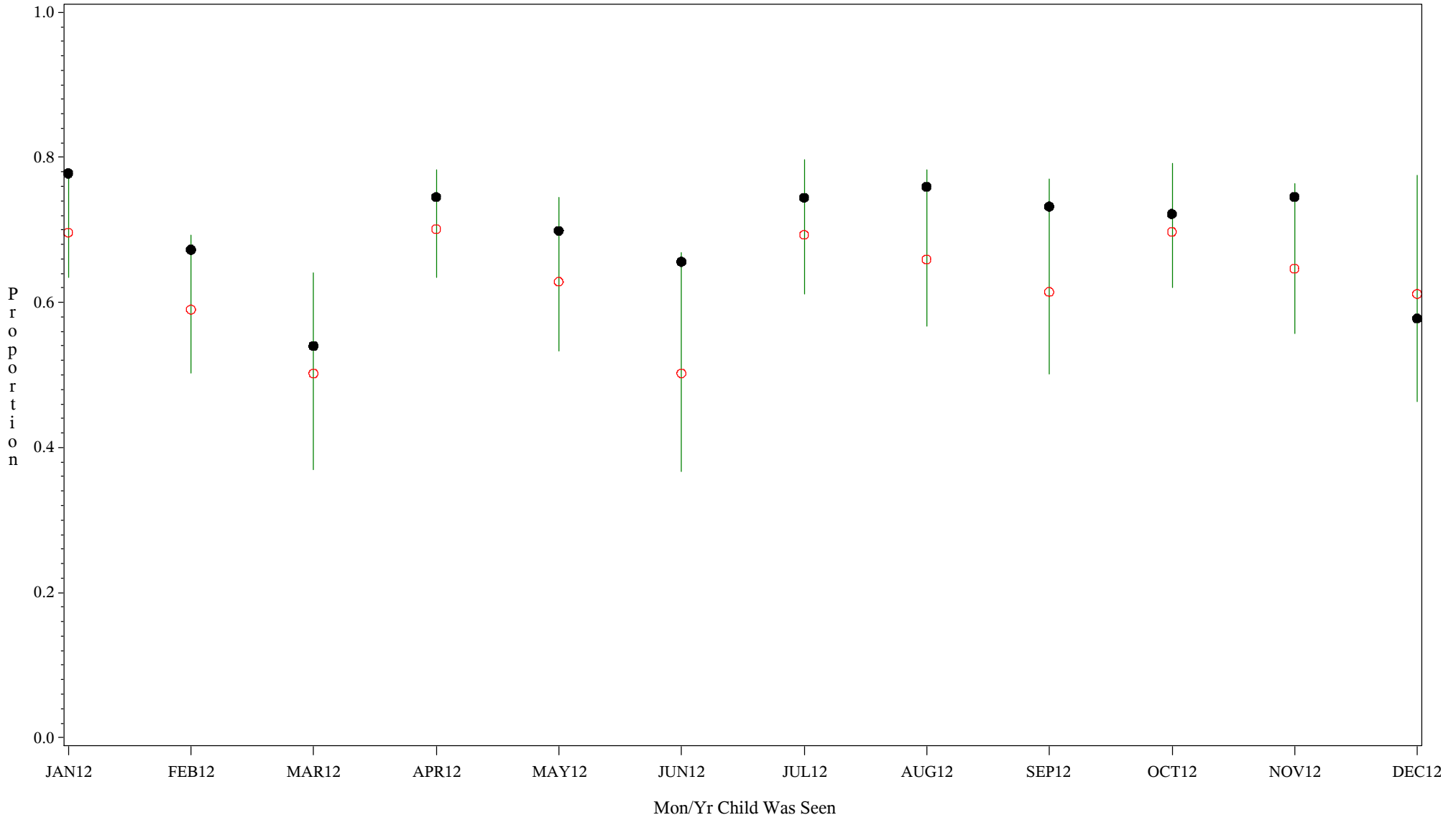
Comp Chart for Up-to-Date Immuniz (HIB) (#5133)

Time Period: January 1, 2012 - December 31, 2012

Denominator=Children 7-15 months, Numerator=Up-to-Date Shots

Chart created: Wednesday, 20FEB2013

hospital=GIMC - Navajo



PLOT ● Organization's Observed Rate ○ Expected Rate-Comparison Group