

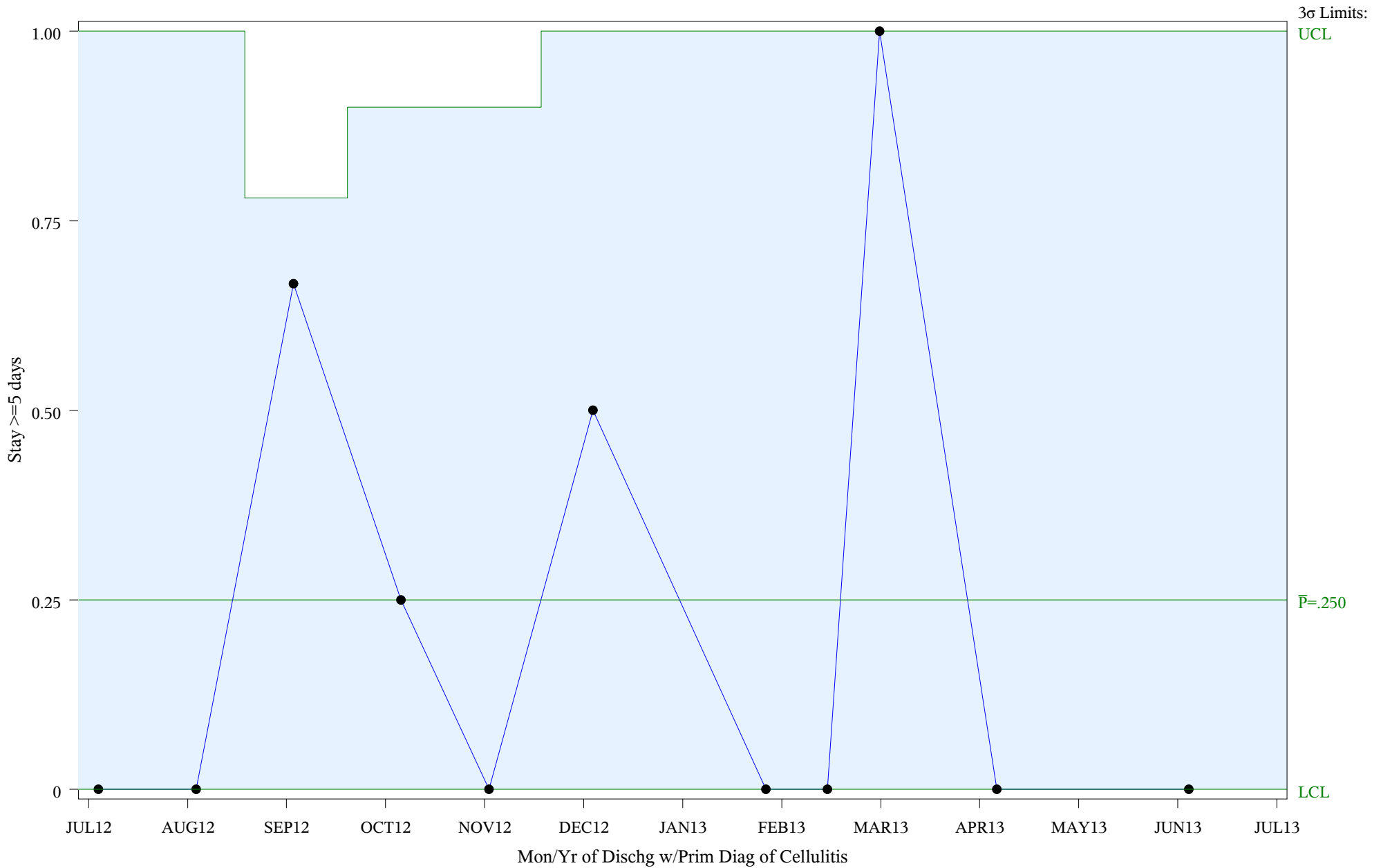
P Chart for Medical Management of Cellulitis (#5086)

Time Period: July 1, 2012 - June 30, 2013

Denom=All Admit w/Prim Diagnosis of Cellulitis, Num=Stay >=5 days

Chart created: Friday, 30AUG2013

Hospital=Quentin N Burdick - Aberdeen



Subgroup Sizes: Min n = 1 Max n = 6

Source: ORYX2.rate5086

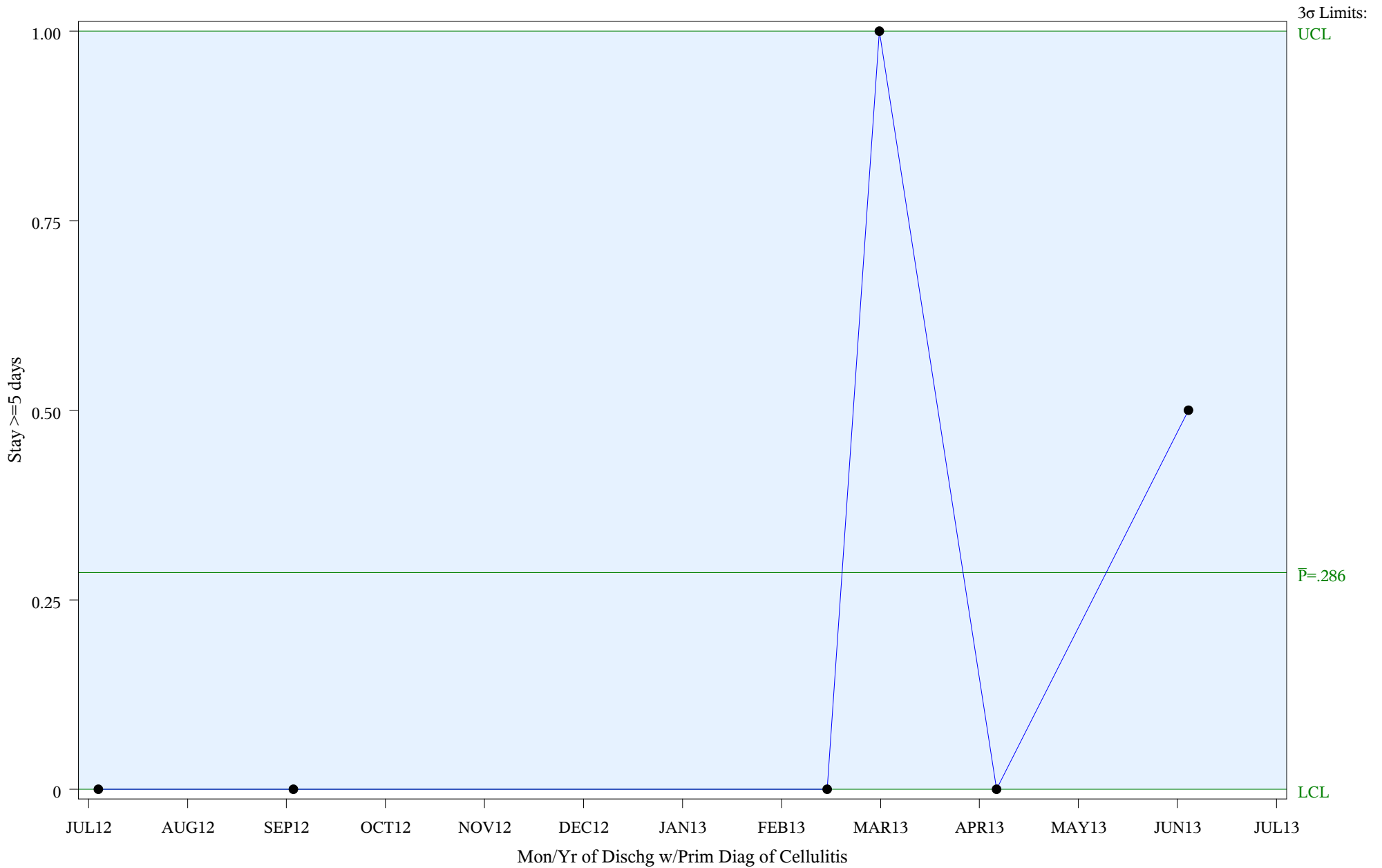
P Chart for Medical Management of Cellulitis (#5086)

Time Period: July 1, 2012 - June 30, 2013

Denom=All Admit w/Prim Diagnosis of Cellulitis, Num=Stay >=5 days

Chart created: Friday, 30AUG2013

Hospital=Winnebago - Aberdeen



Subgroup Sizes: Min n = 1 Max n = 2

Source: ORYX2.rate5086

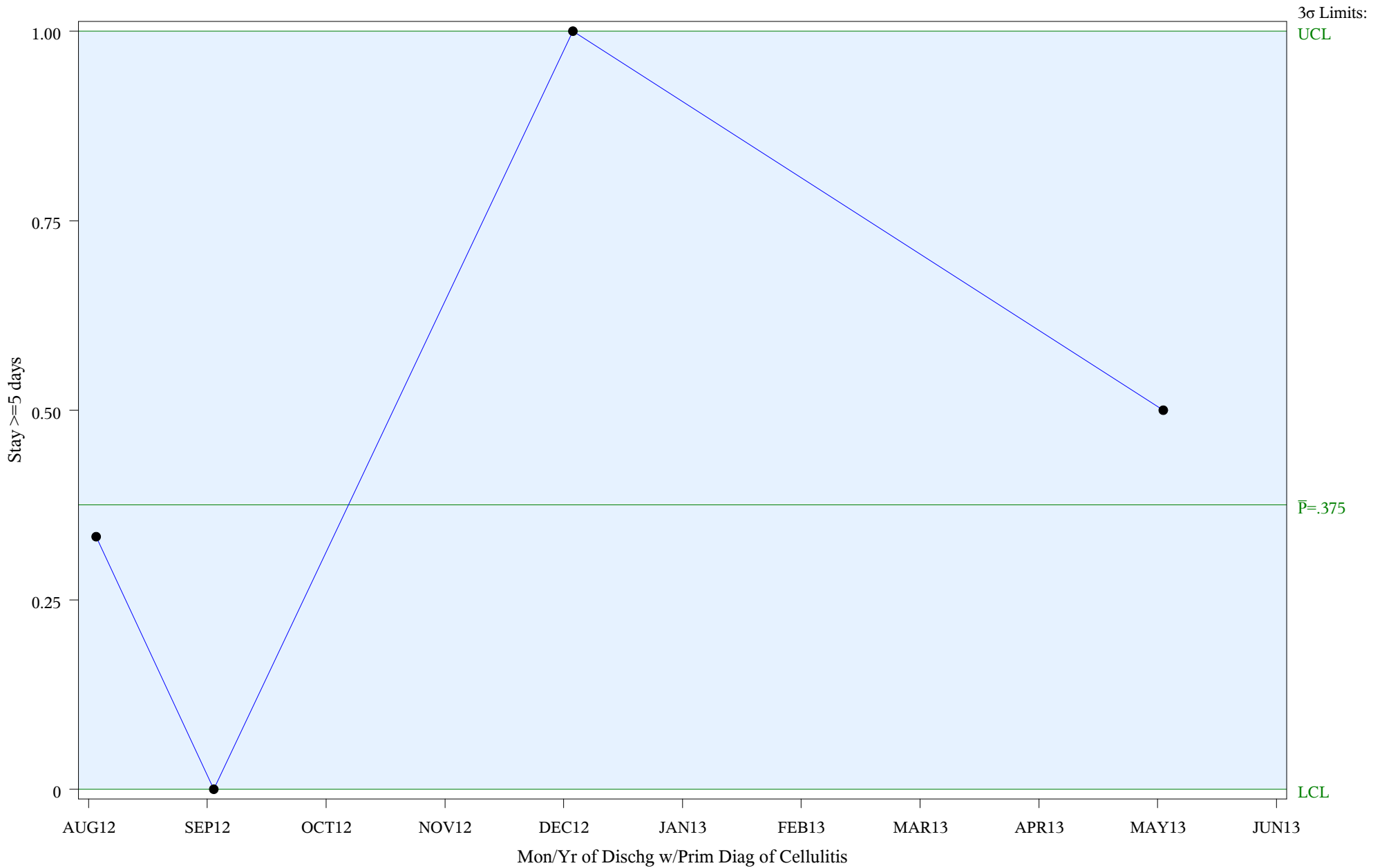
P Chart for Medical Management of Cellulitis (#5086)

Time Period: July 1, 2012 - June 30, 2013

Denom=All Admit w/Prim Diagnosis of Cellulitis, Num=Stay >=5 days

Chart created: Friday, 30AUG2013

Hospital=Zuni - Albuquerque



Subgroup Sizes: Min n = 1 Max n = 3

Source: ORYX2.rate5086

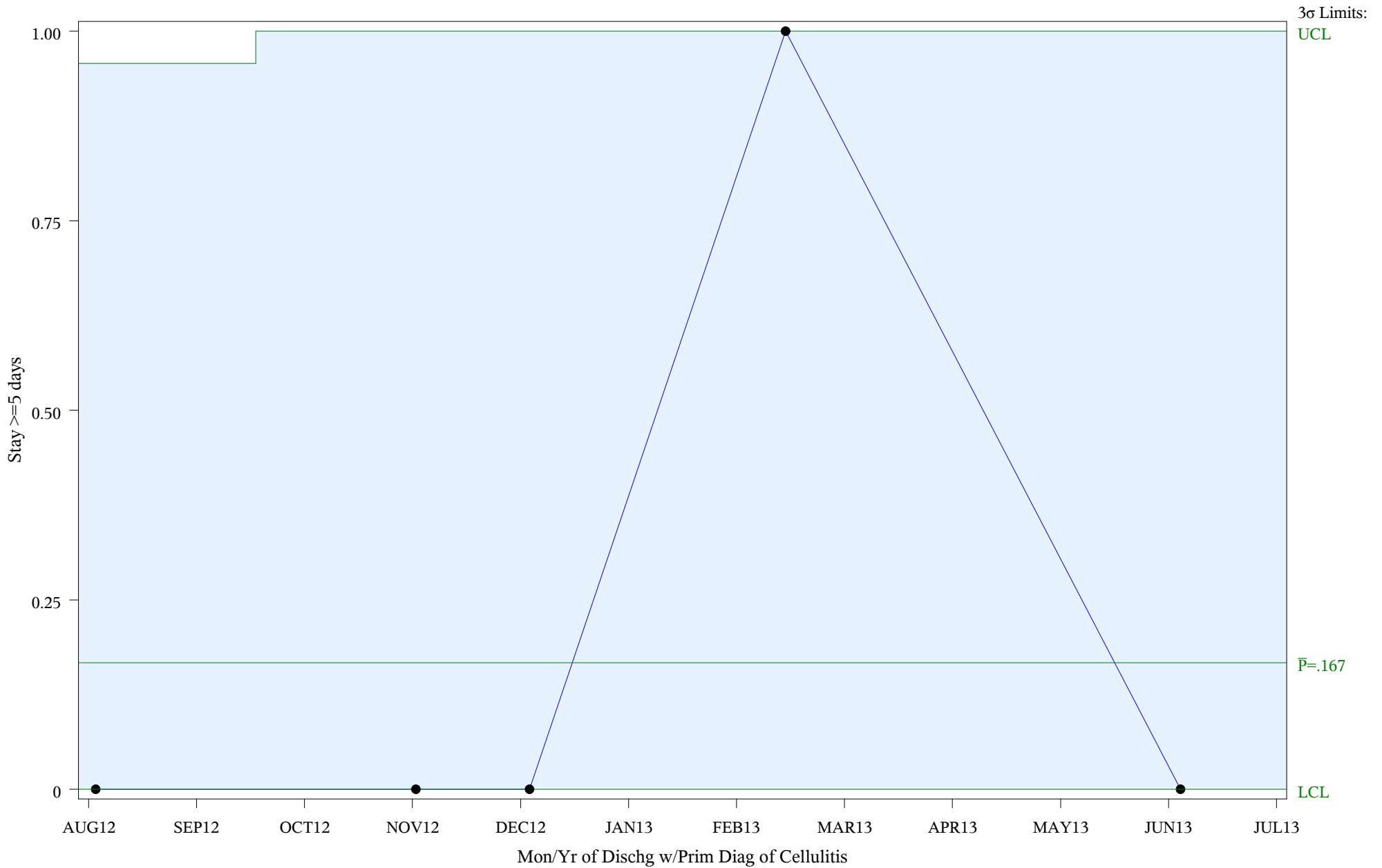
P Chart for Medical Management of Cellulitis (#5086)

Time Period: July 1, 2012 - June 30, 2013

Denom=All Admit w/Prim Diagnosis of Cellulitis, Num=Stay >=5 days

Chart created: Friday, 30AUG2013

Hospital=Maniilaq - Alaska



Subgroup Sizes: Min n = 1 Max n = 2

Source: ORYX2.rate5086

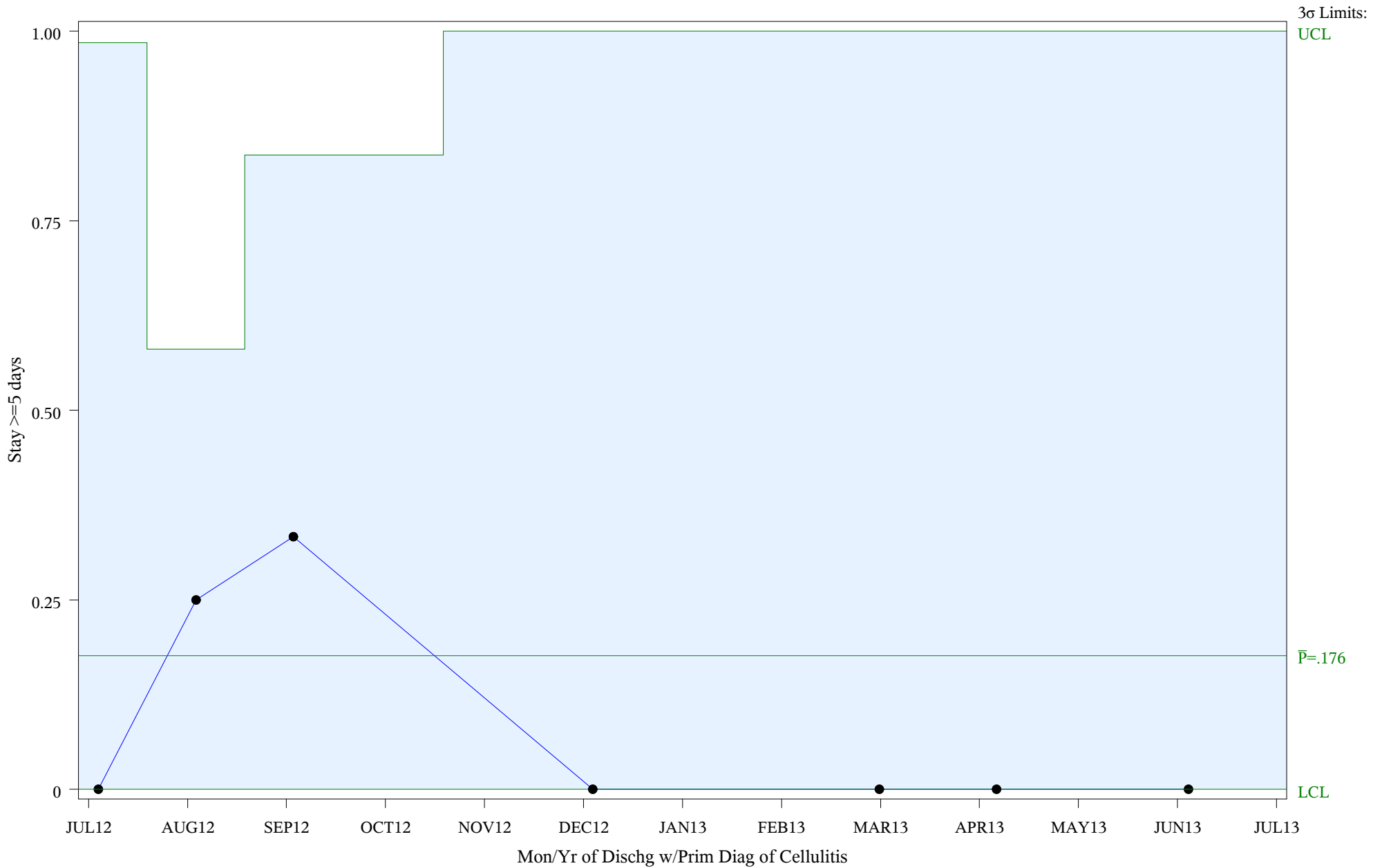
P Chart for Medical Management of Cellulitis (#5086)

Time Period: July 1, 2012 - June 30, 2013

Denom=All Admit w/Prim Diagnosis of Cellulitis, Num=Stay >=5 days

Chart created: Friday, 30AUG2013

Hospital=Chickasaw Hospital - Oklahoma



Subgroup Sizes: Min n = 1 Max n = 8

Source: ORYX2.rate5086

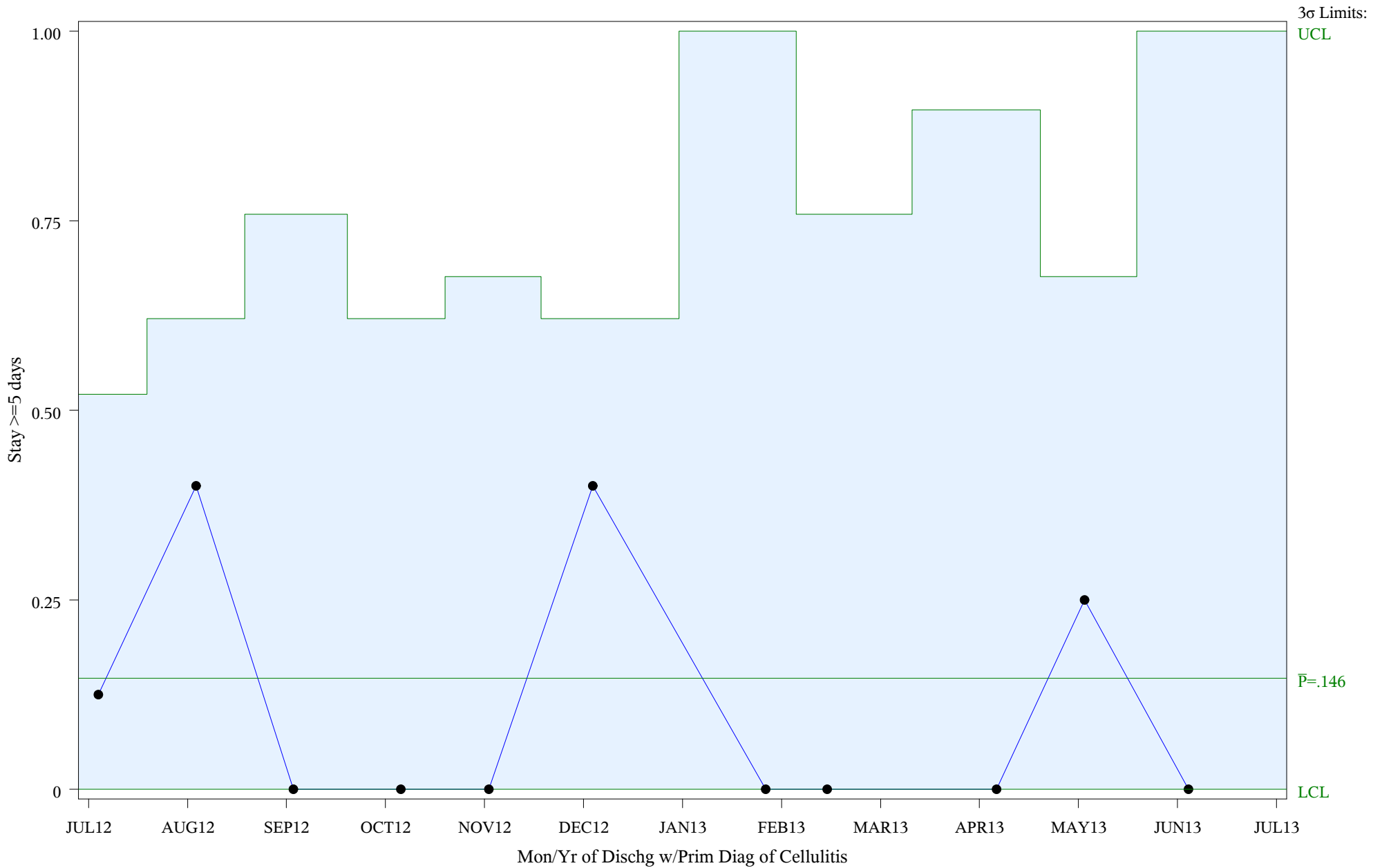
P Chart for Medical Management of Cellulitis (#5086)

Time Period: July 1, 2012 - June 30, 2013

Denom=All Admit w/Prim Diagnosis of Cellulitis, Num=Stay >=5 days

Chart created: Friday, 30AUG2013

Hospital=Shiprock - Navajo



Subgroup Sizes: Min n = 1 Max n = 8

Source: ORYX2.rate5086