

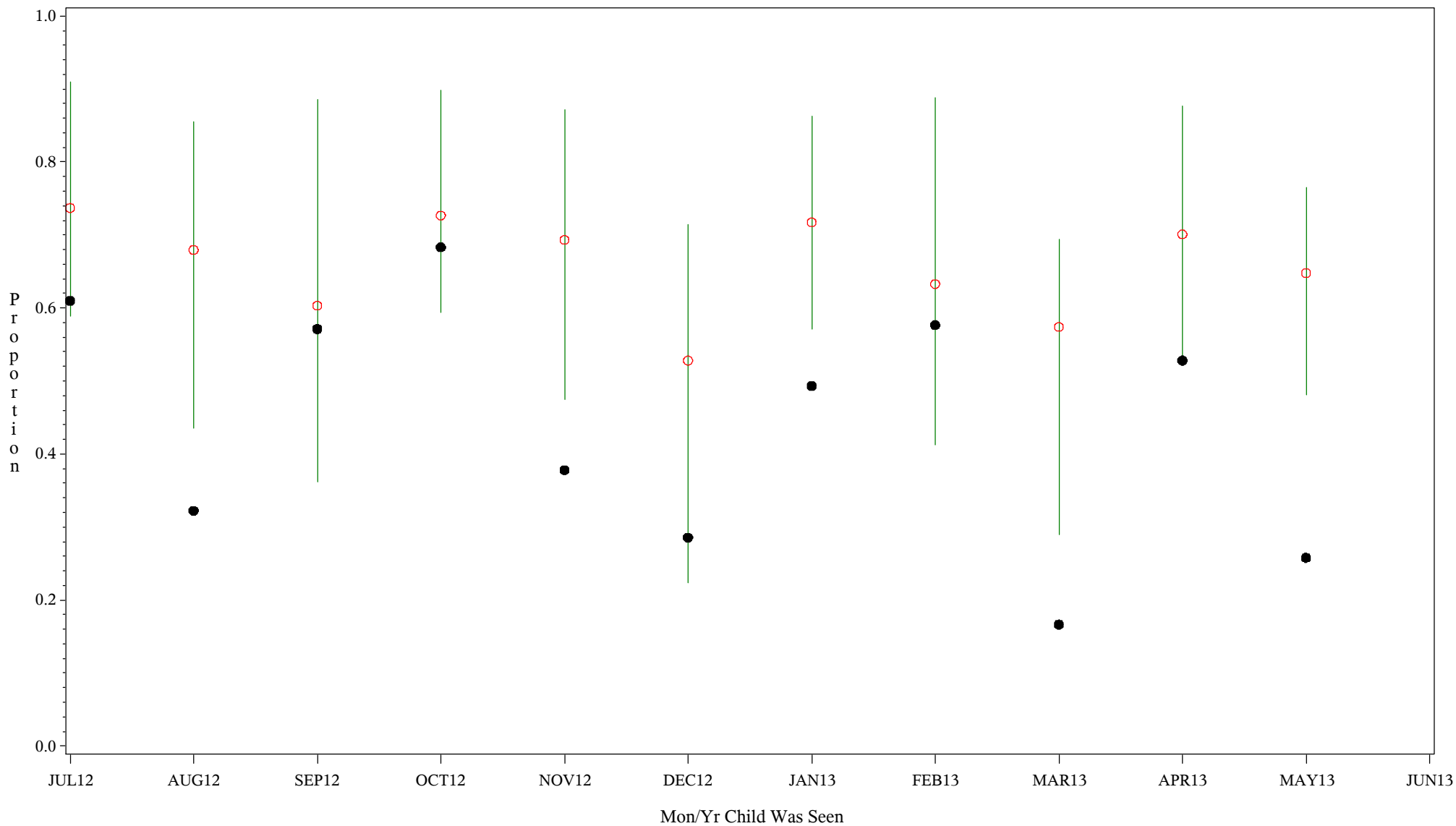
Comp Chart for Up-to-Date Immuniz (HIB) (# 15828-5133)

Time Period: July 1, 2012 - June 30, 2013

Denominator=Children 7-15 months, Numerator=Up-to-Date Shots

Chart created: Thursday, 12SEP2013

hospital=Sells - Tucson



PLOT ● Organization's Observed Rate ○ Expected Rate-Comparison Group

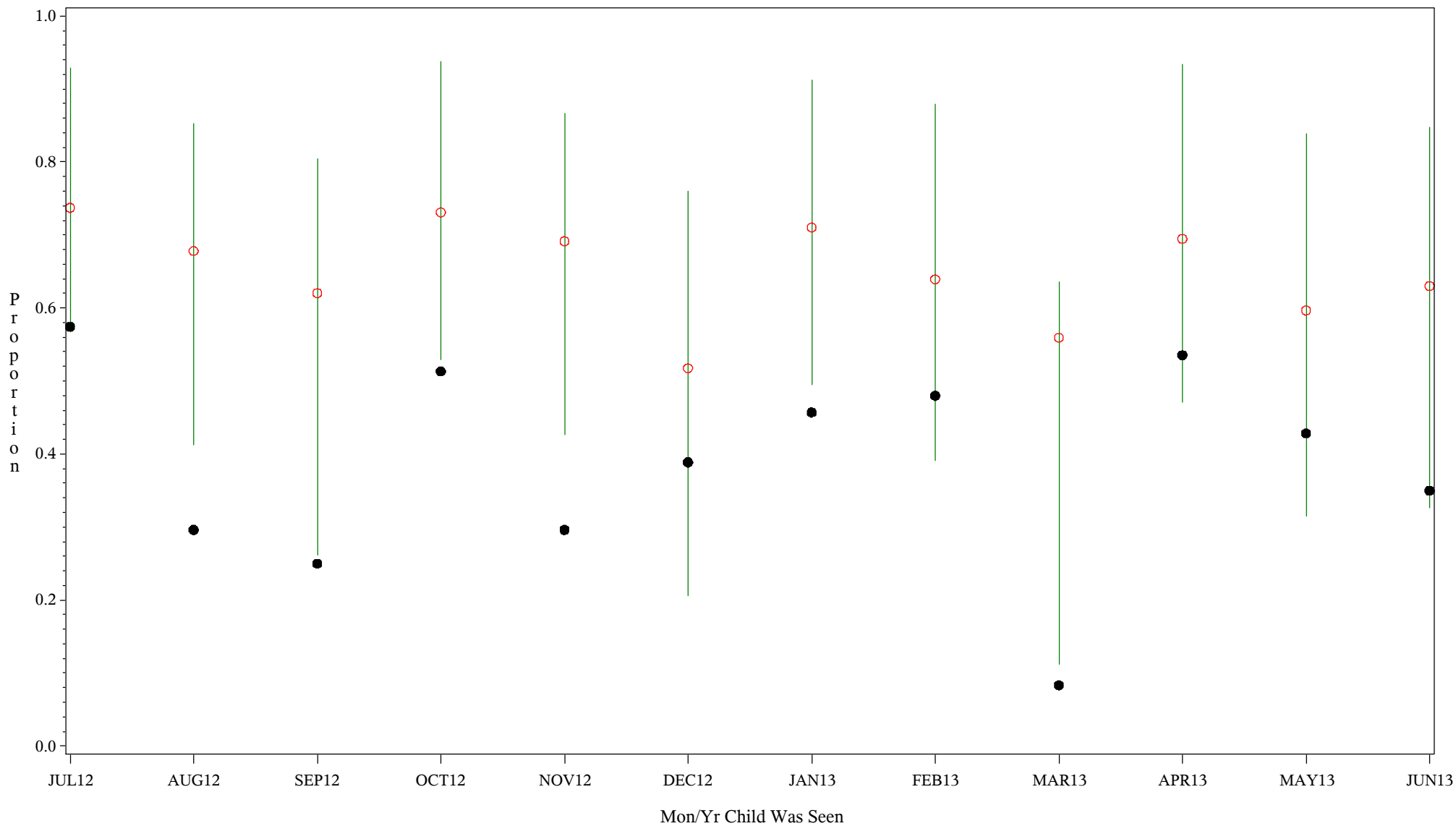
Comp Chart for Up-to-Date Immuniz (HIB) (# 15828-5133)

Time Period: July 1, 2012 - June 30, 2013

Denominator=Children 7-15 months, Numerator=Up-to-Date Shots

Chart created: Thursday, 12SEP2013

hospital=Ft. Yates - Aberdeen



PLOT ● Organization's Observed Rate ○ Expected Rate-Comparison Group

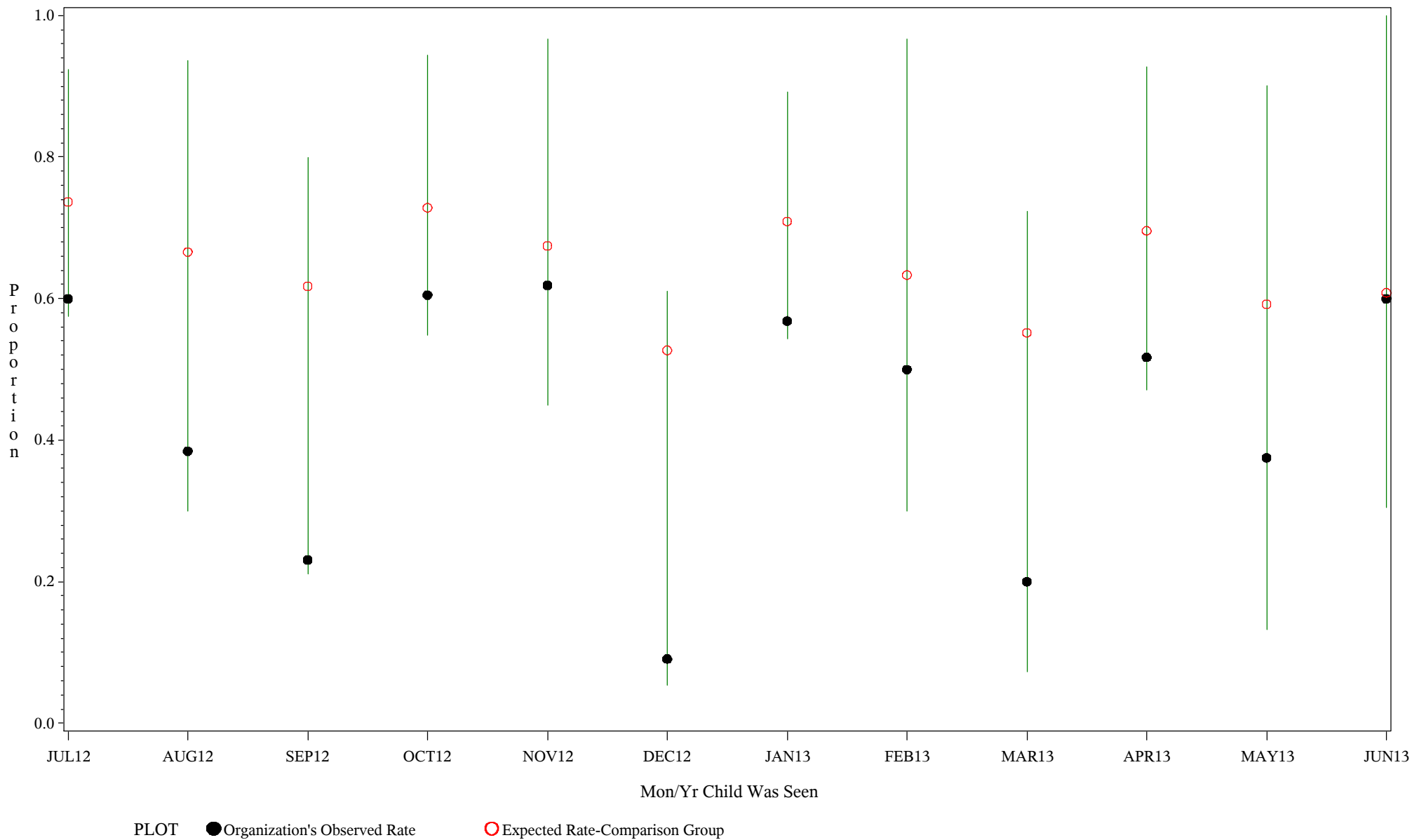
Comp Chart for Up-to-Date Immuniz (HIB) (# 15828-5133)

Time Period: July 1, 2012 - June 30, 2013

Denominator=Children 7-15 months, Numerator=Up-to-Date Shots

Chart created: Thursday, 12SEP2013

hospital=Winnebago - Aberdeen



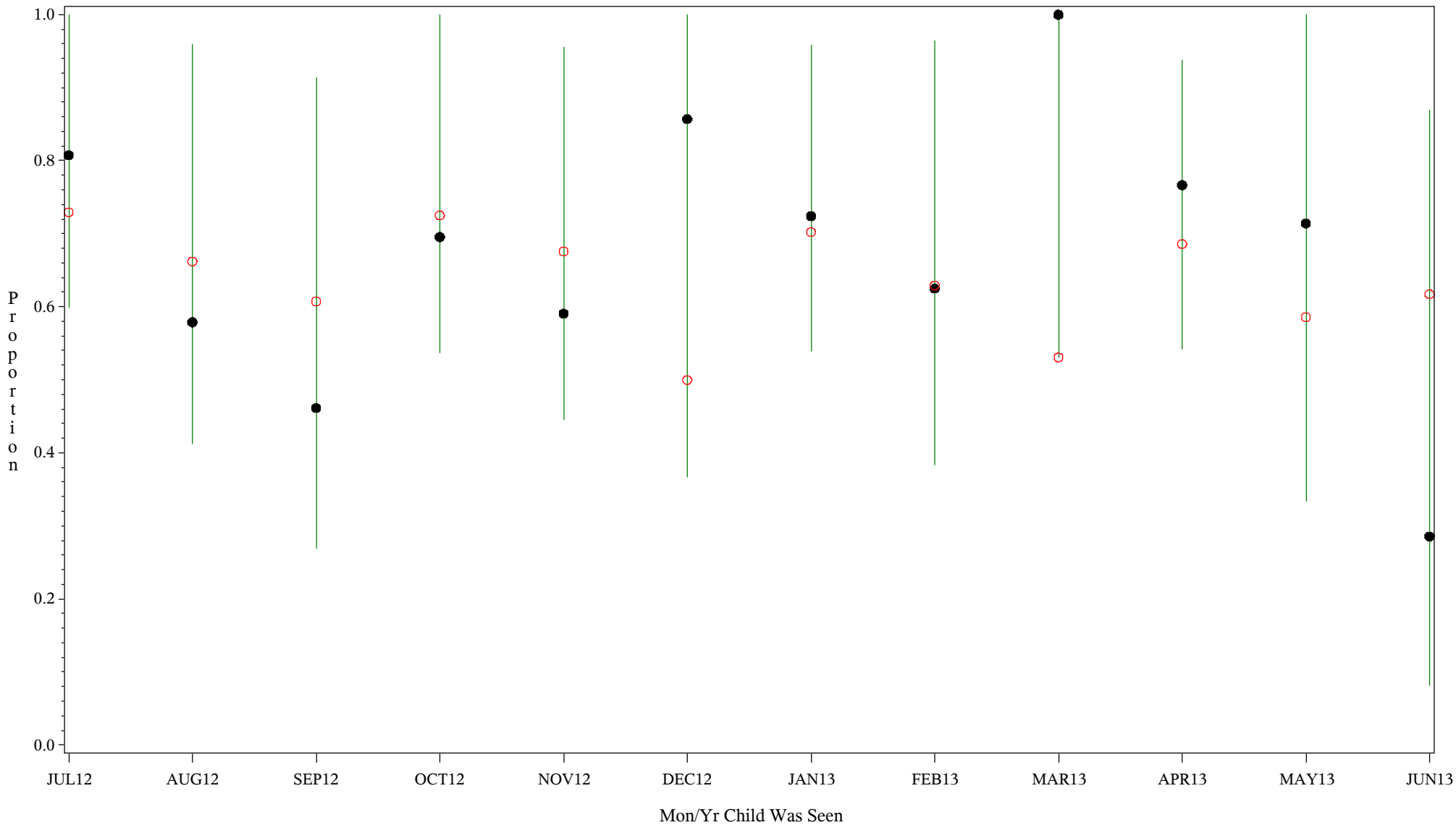
Comp Chart for Up-to-Date Immuniz (HIB) (# 15828-5133)

Time Period: July 1, 2012 - June 30, 2013

Denominator=Children 7-15 months, Numerator=Up-to-Date Shots

Chart created: Thursday, 12SEP2013

hospital=Mescalero - Albuquerque



PLOT ● Organization's Observed Rate ○ Expected Rate-Comparison Group

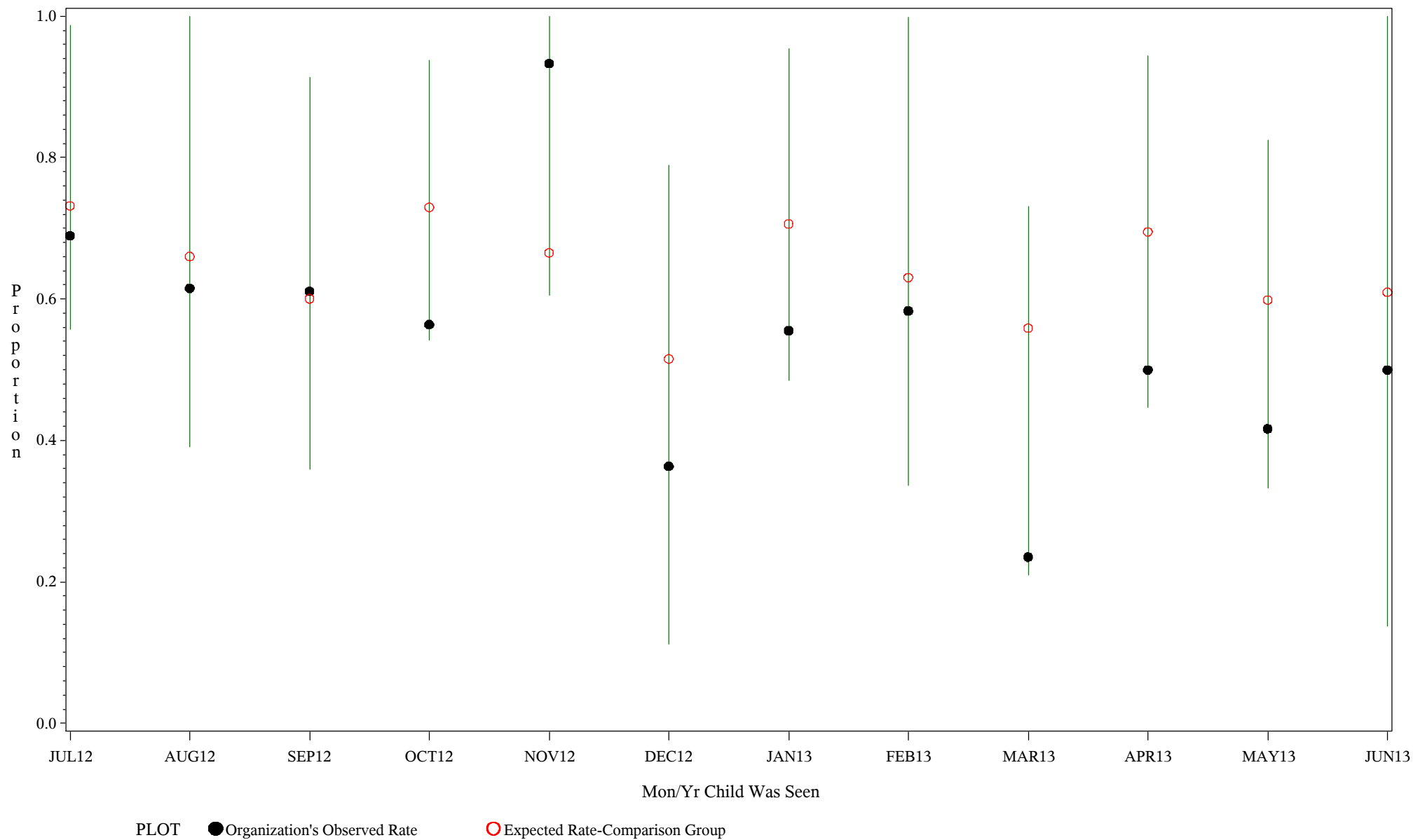
Comp Chart for Up-to-Date Immuniz (HIB) (# 15828-5133)

Time Period: July 1, 2012 - June 30, 2013

Denominator=Children 7-15 months, Numerator=Up-to-Date Shots

Chart created: Thursday, 12SEP2013

hospital=Santa Fe - Albuquerque



Source: ORYX2.rate5133

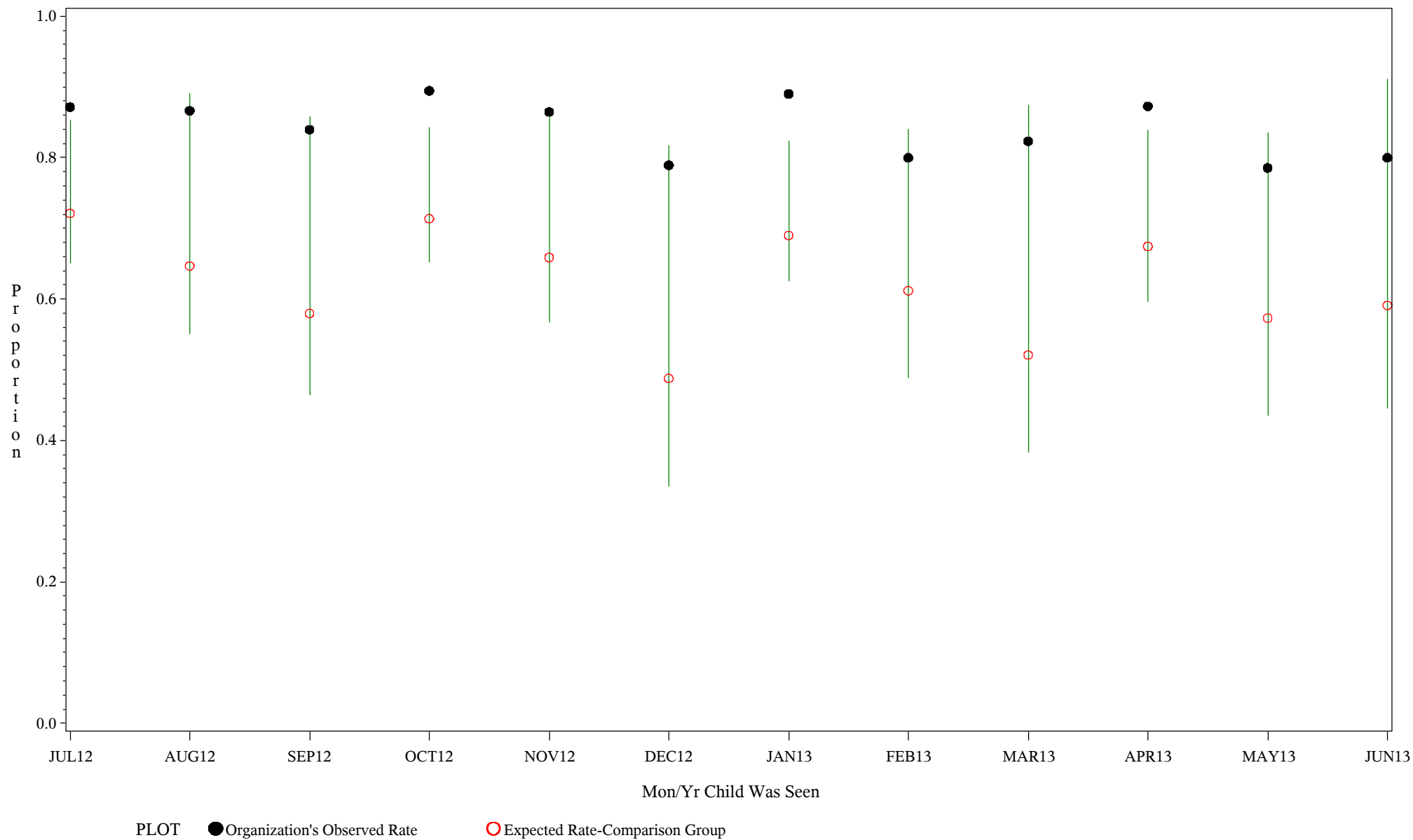
Comp Chart for Up-to-Date Immuniz (HIB) (# 15828-5133)

Time Period: July 1, 2012 - June 30, 2013

Denominator=Children 7-15 months, Numerator=Up-to-Date Shots

Chart created: Thursday, 12SEP2013

hospital=Zuni - Albuquerque



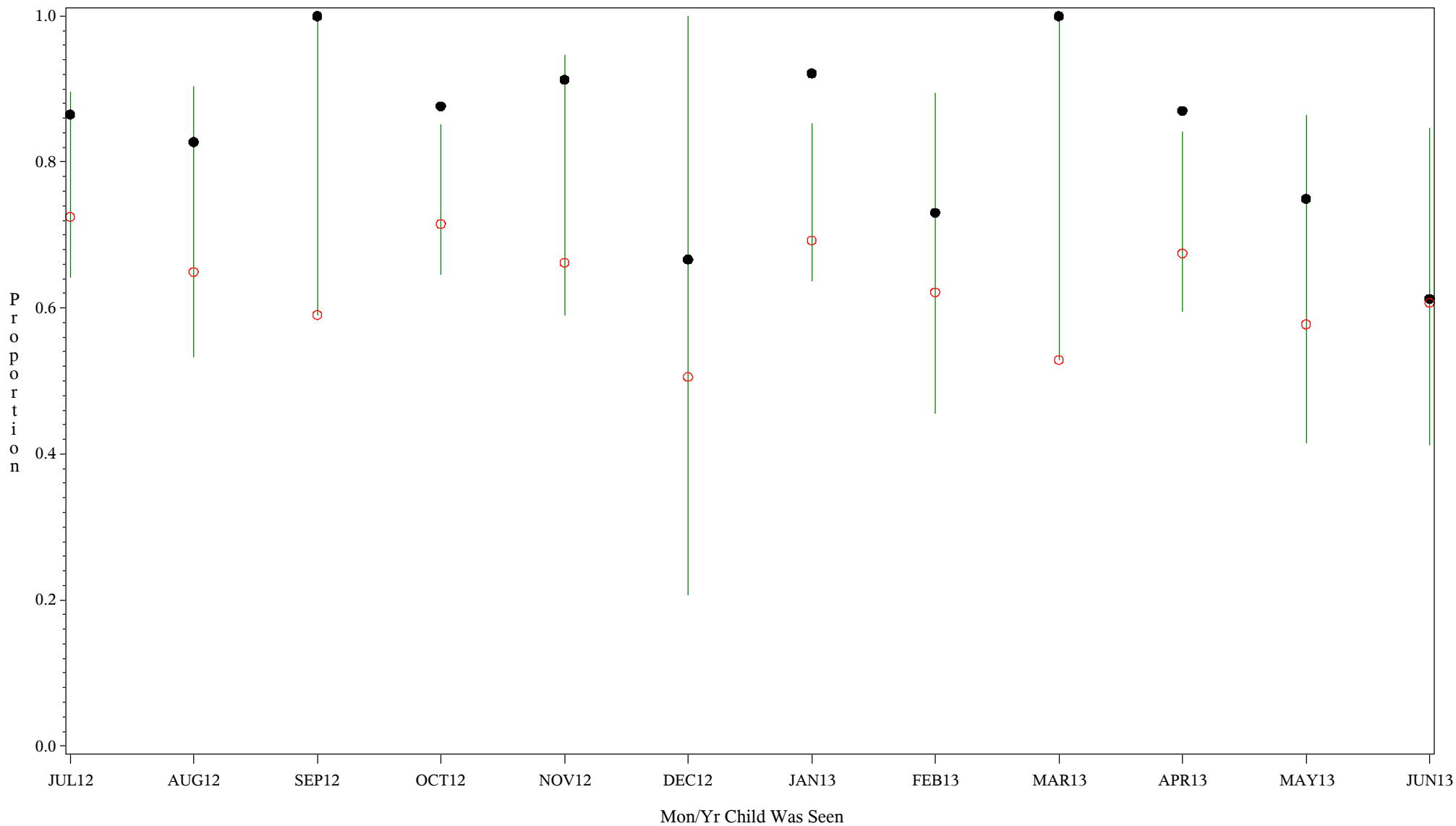
Comp Chart for Up-to-Date Immuniz (HIB) (# 15828-5133)

Time Period: July 1, 2012 - June 30, 2013

Denominator=Children 7-15 months, Numerator=Up-to-Date Shots

Chart created: Thursday, 12SEP2013

hospital=Barrow - Alaska



PLOT ● Organization's Observed Rate ○ Expected Rate-Comparison Group

Source: ORYX2.rate5133

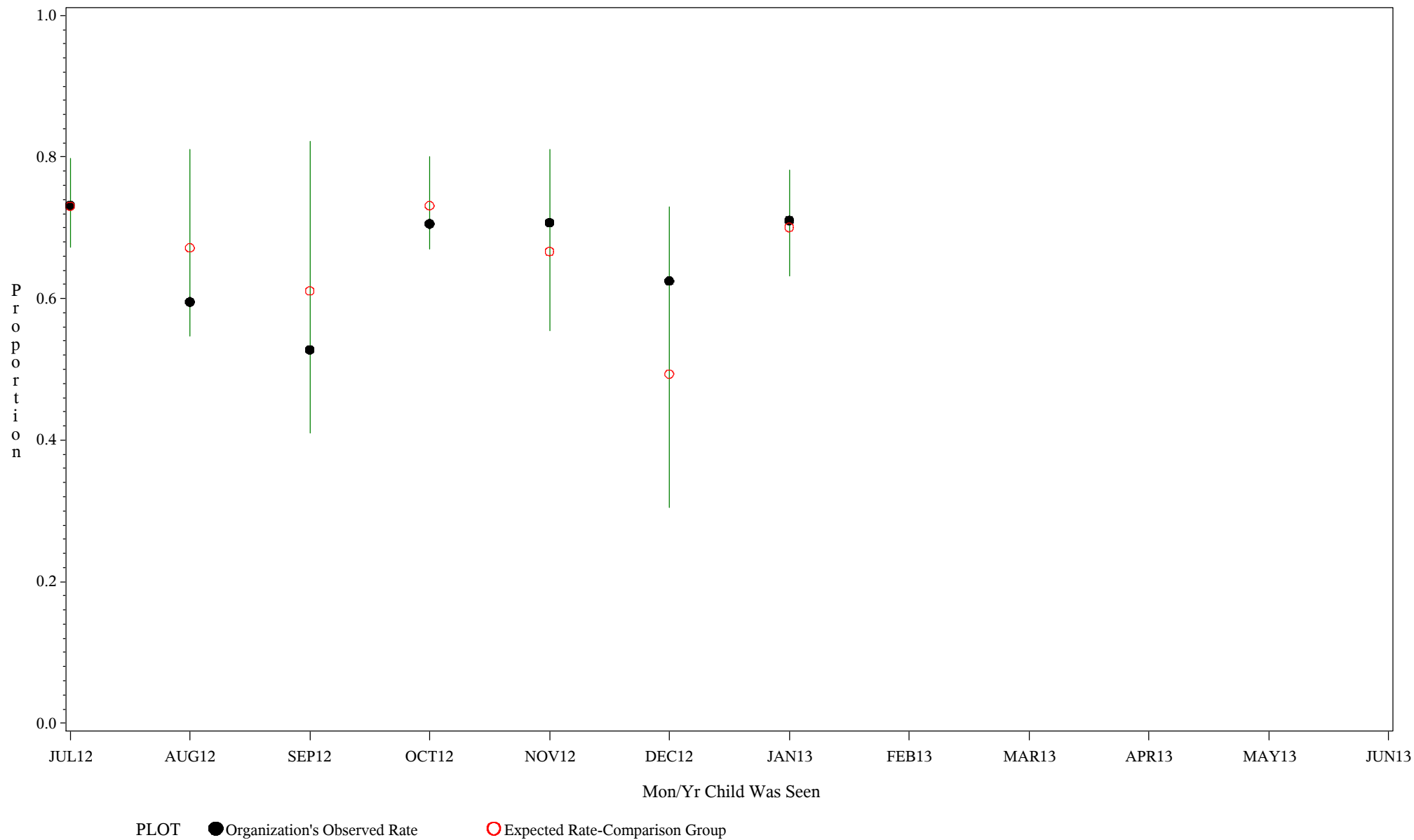
Comp Chart for Up-to-Date Immuniz (HIB) (# 15828-5133)

Time Period: July 1, 2012 - June 30, 2013

Denominator=Children 7-15 months, Numerator=Up-to-Date Shots

Chart created: Thursday, 12SEP2013

hospital=YK Health - Alaska



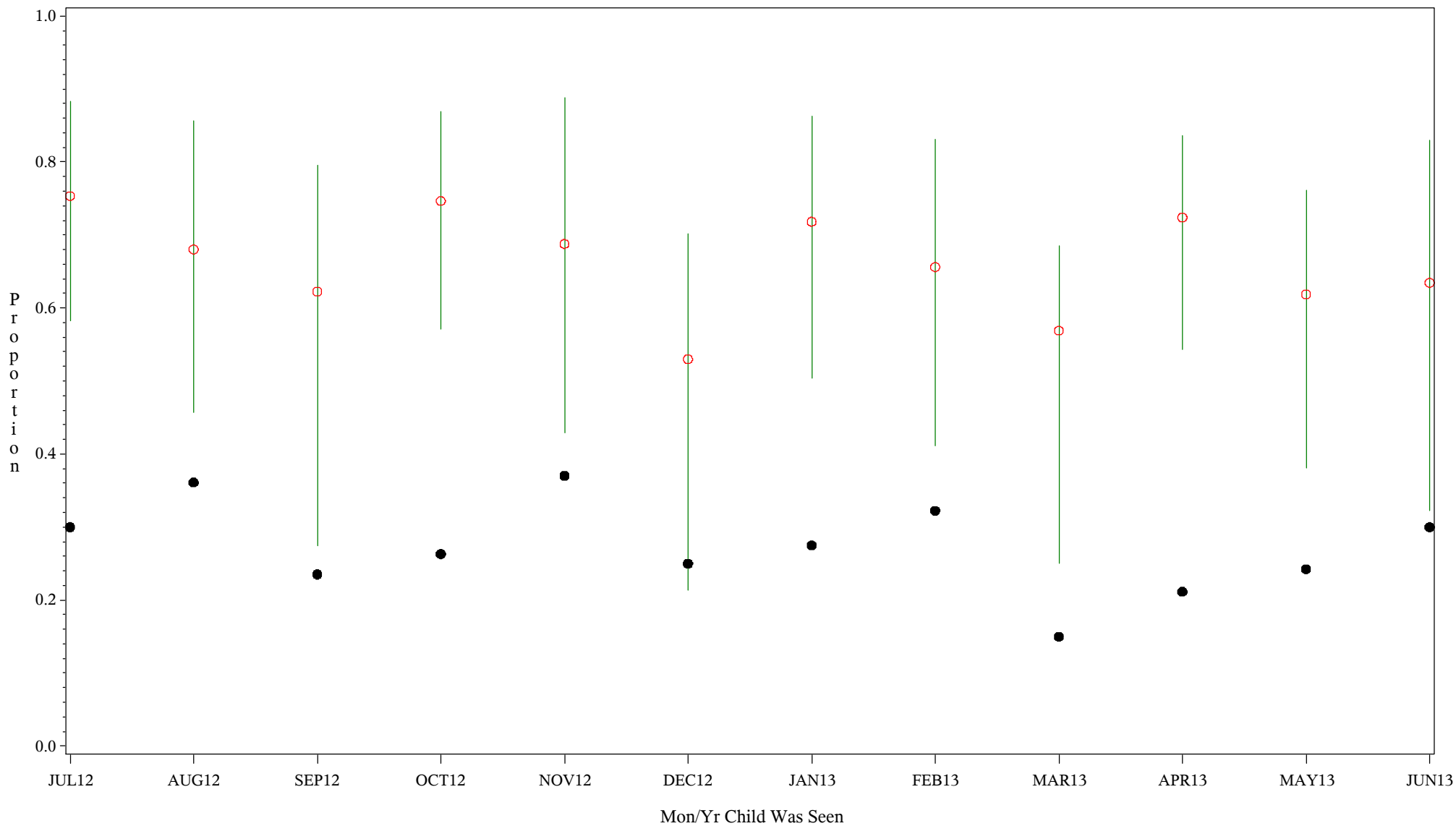
Comp Chart for Up-to-Date Immuniz (HIB) (# 15828-5133)

Time Period: July 1, 2012 - June 30, 2013

Denominator=Children 7-15 months, Numerator=Up-to-Date Shots

Chart created: Thursday, 12SEP2013

hospital=Maniilaq - Alaska



PLOT ● Organization's Observed Rate ○ Expected Rate-Comparison Group

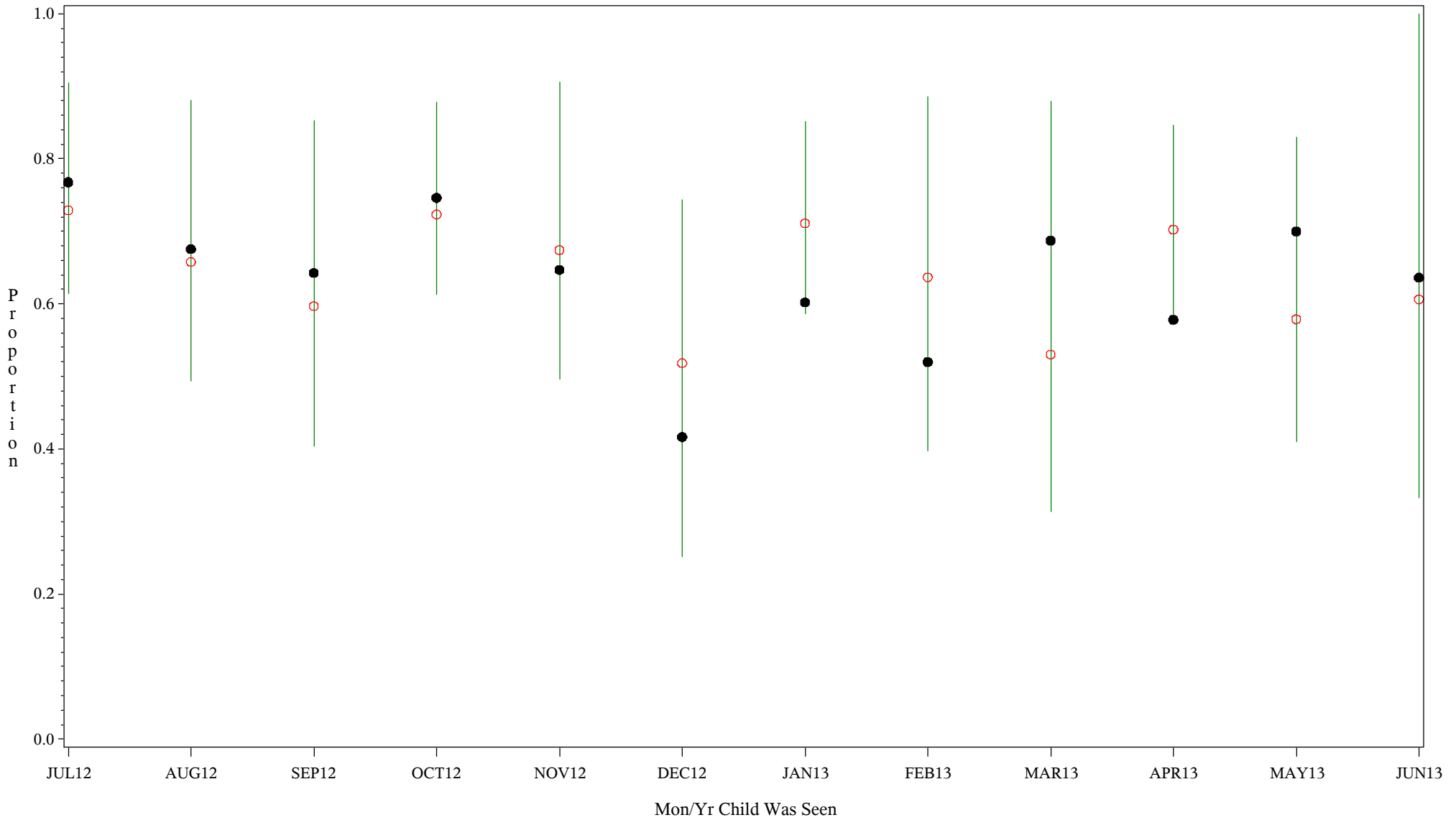
Comp Chart for Up-to-Date Immuniz (HIB) (# 15828-5133)

Time Period: July 1, 2012 - June 30, 2013

Denominator=Children 7-15 months, Numerator=Up-to-Date Shots

Chart created: Thursday, 12SEP2013

hospital=Lawton - Oklahoma



PLOT ● Organization's Observed Rate ○ Expected Rate-Comparison Group

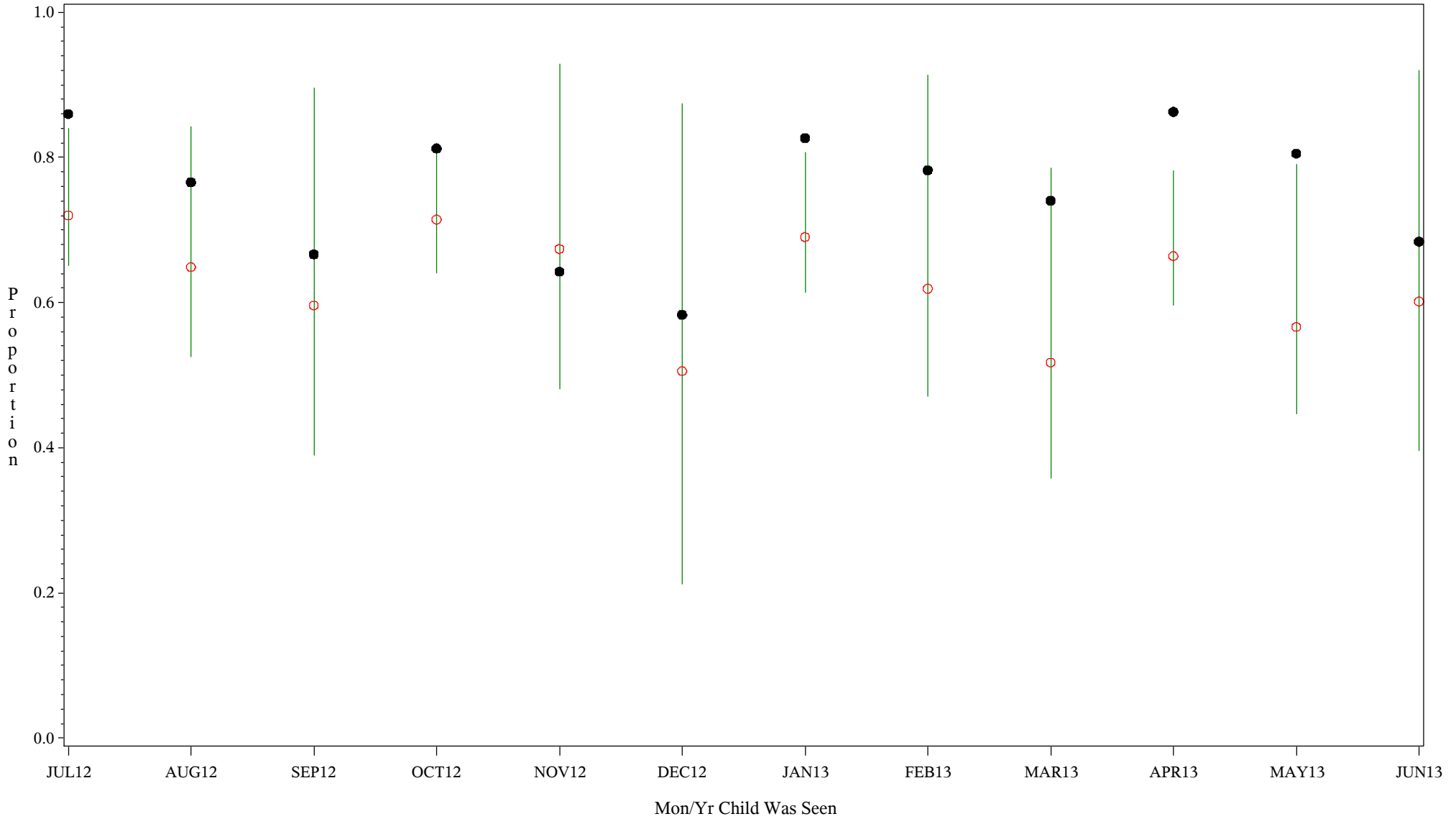
Comp Chart for Up-to-Date Immuniz (HIB) (# 15828-5133)

Time Period: July 1, 2012 - June 30, 2013

Denominator=Children 7-15 months, Numerator=Up-to-Date Shots

Chart created: Thursday, 12SEP2013

hospital=Choctaw Hosp - Nashville



PLOT ● Organization's Observed Rate ○ Expected Rate-Comparison Group

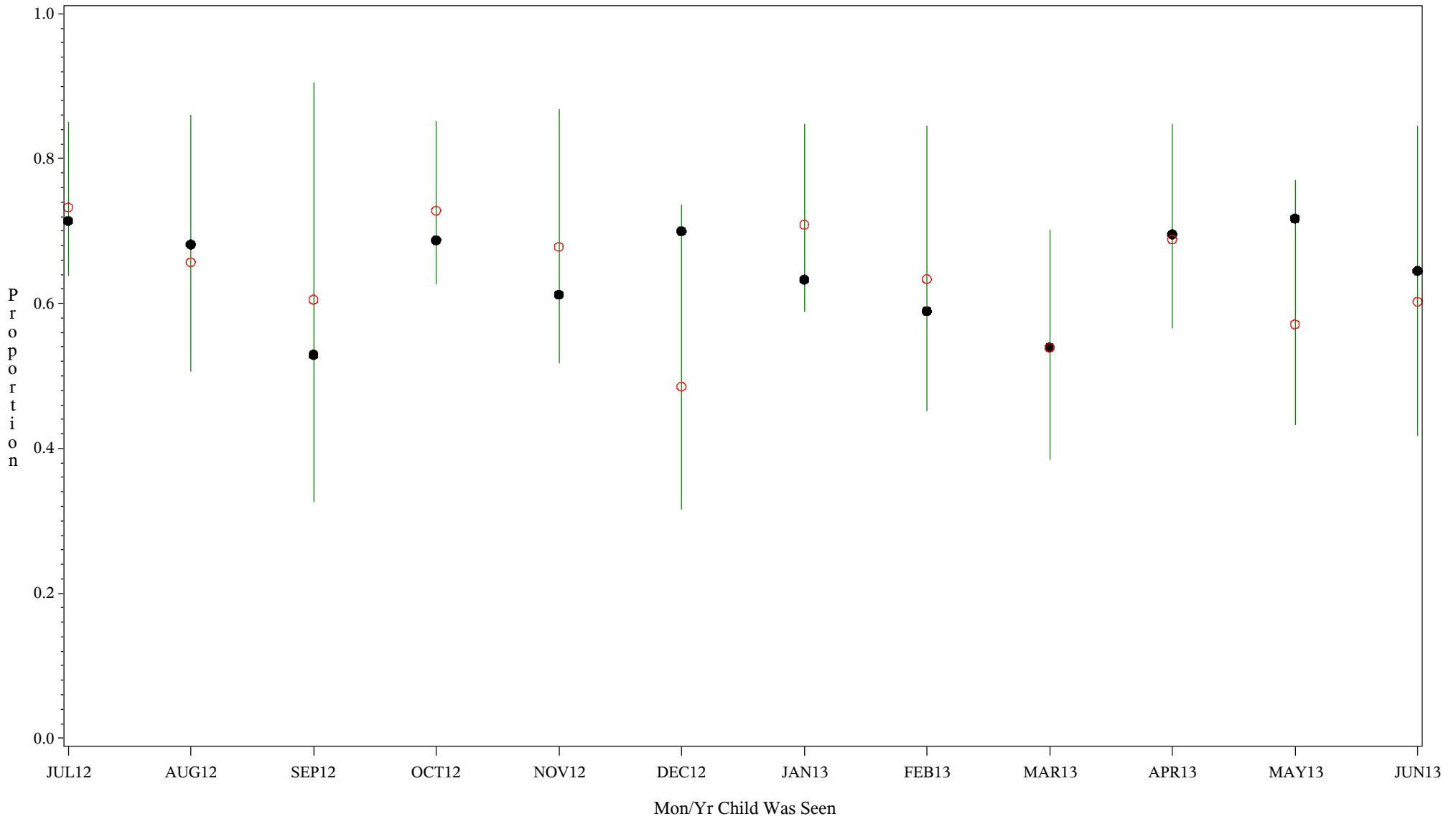
Comp Chart for Up-to-Date Immuniz (HIB) (# 15828-5133)

Time Period: July 1, 2012 - June 30, 2013

Denominator=Children 7-15 months, Numerator=Up-to-Date Shots

Chart created: Thursday, 12SEP2013

hospital=San Carlos - Phoenix



PLOT ● Organization's Observed Rate ○ Expected Rate-Comparison Group

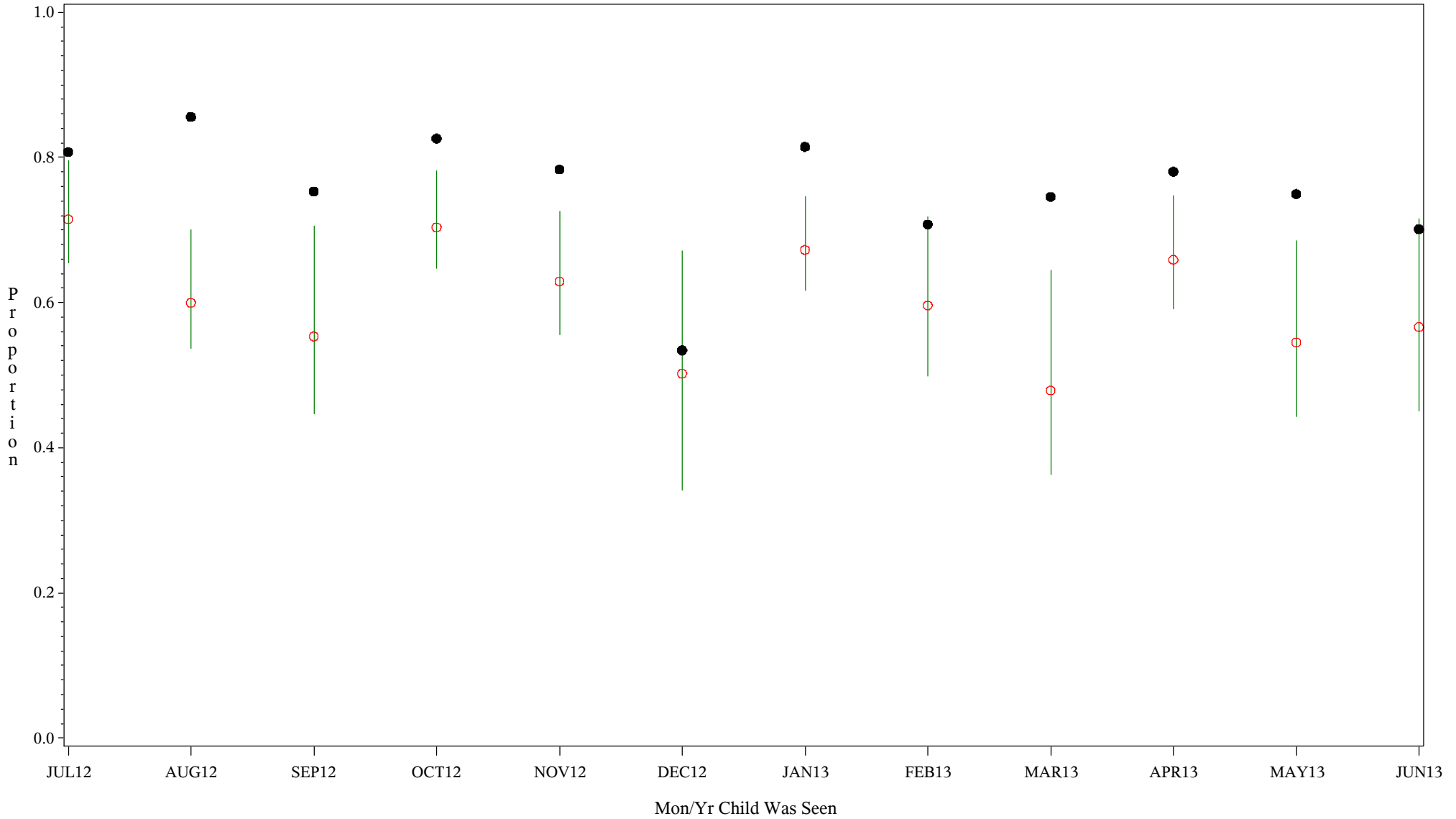
Comp Chart for Up-to-Date Immuniz (HIB) (# 15828-5133)

Time Period: July 1, 2012 - June 30, 2013

Denominator=Children 7-15 months, Numerator=Up-to-Date Shots

Chart created: Thursday, 12SEP2013

hospital=GIMC - Navajo



PLOT ● Organization's Observed Rate ○ Expected Rate-Comparison Group