

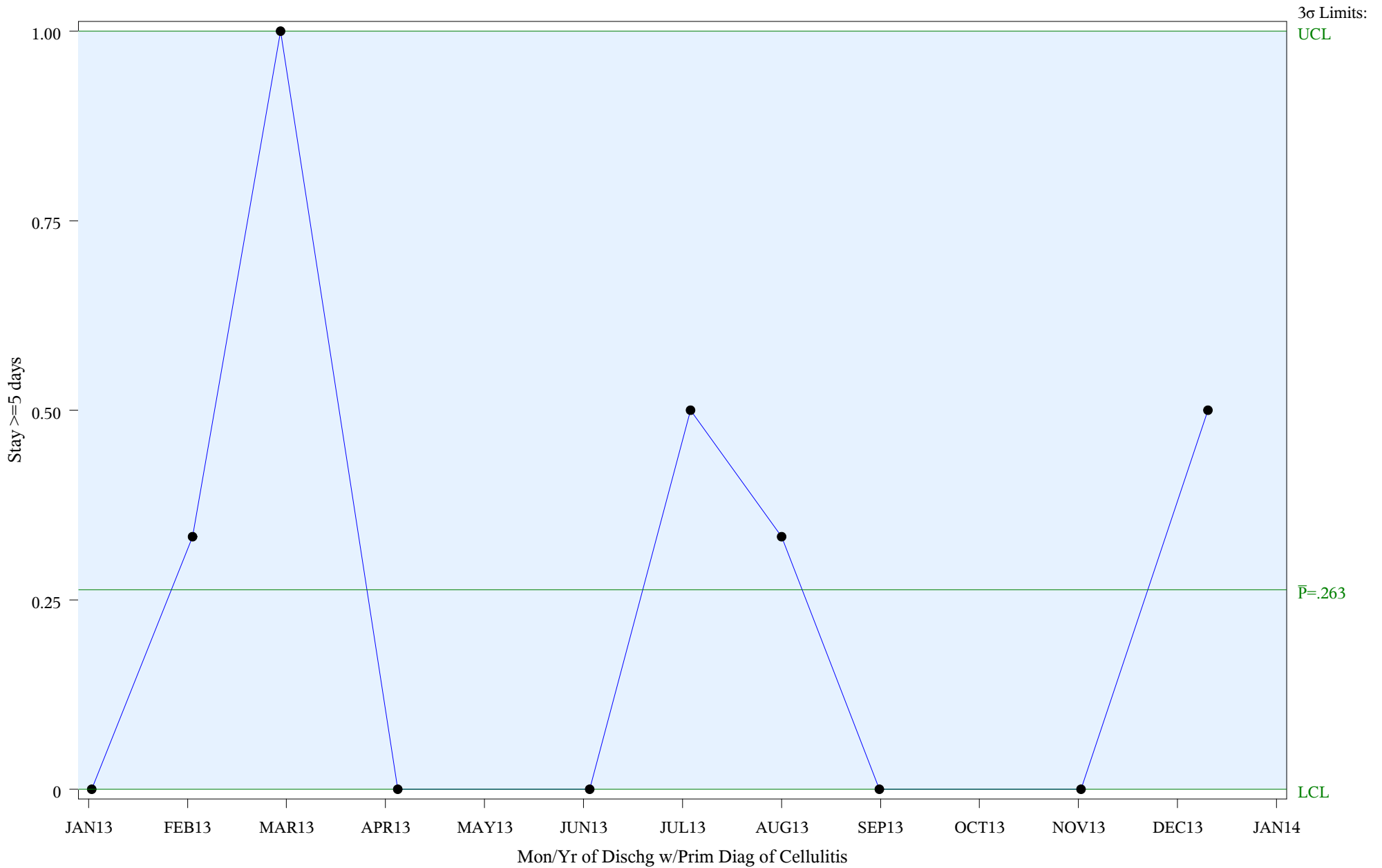
P Chart for Medical Management of Cellulitis (#5086)

Time Period: January 1, 2013 - December 31, 2013

Denom=All Admit w/Prim Diagnosis of Cellulitis, Num=Stay >=5 days

Chart created: Thursday, 30JAN2014

Hospital=Quentin N Burdick - Aberdeen



Subgroup Sizes: Min n = 1 Max n = 3

Source: ORYX2.rate5086

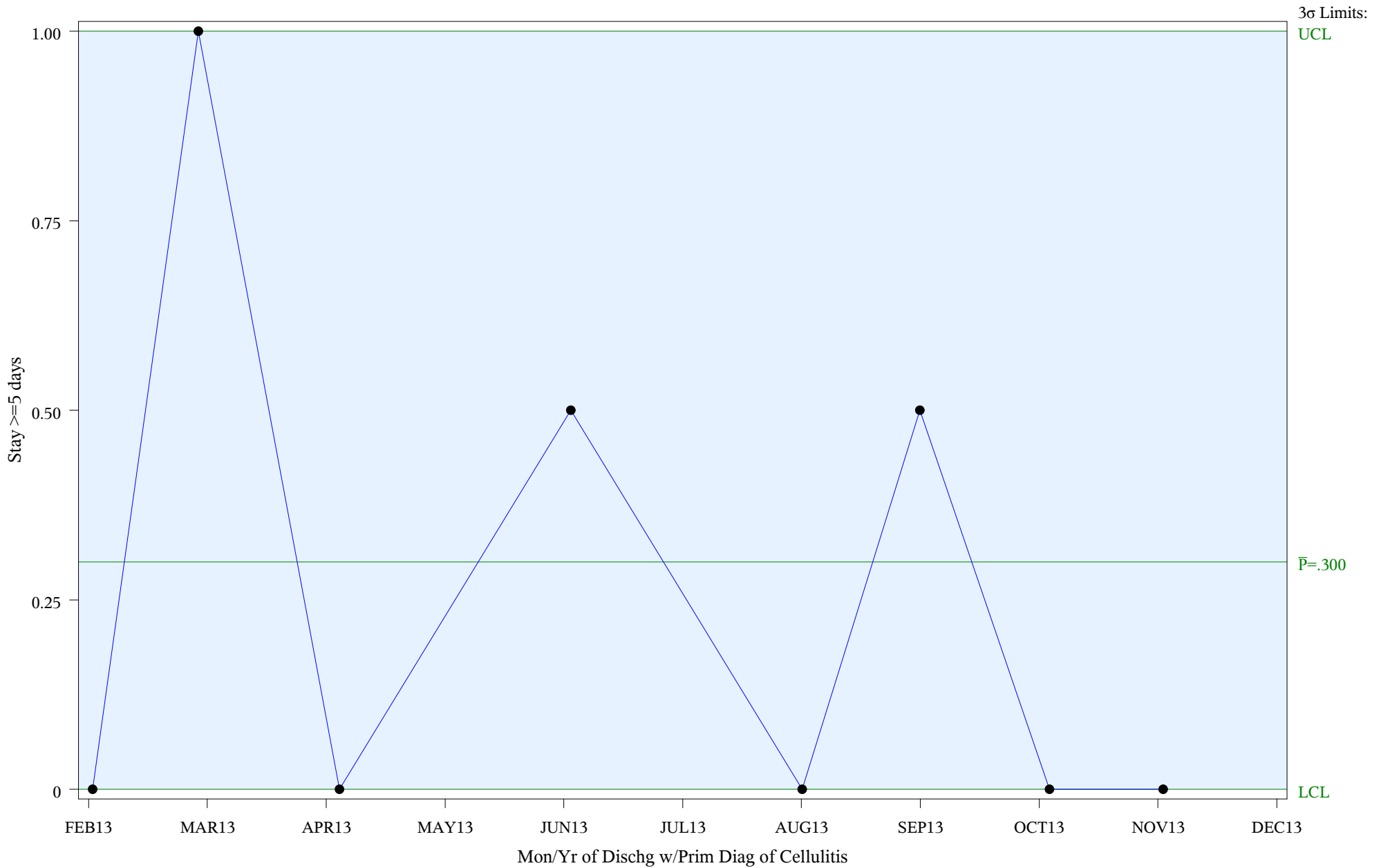
P Chart for Medical Management of Cellulitis (#5086)

Time Period: January 1, 2013 - December 31, 2013

Denom=All Admit w/Prim Diagnosis of Cellulitis, Num=Stay >=5 days

Chart created: Thursday, 30JAN2014

Hospital=Winnebago - Aberdeen



Subgroup Sizes: Min n = 1 Max n = 2

Source: ORYX2.rate5086

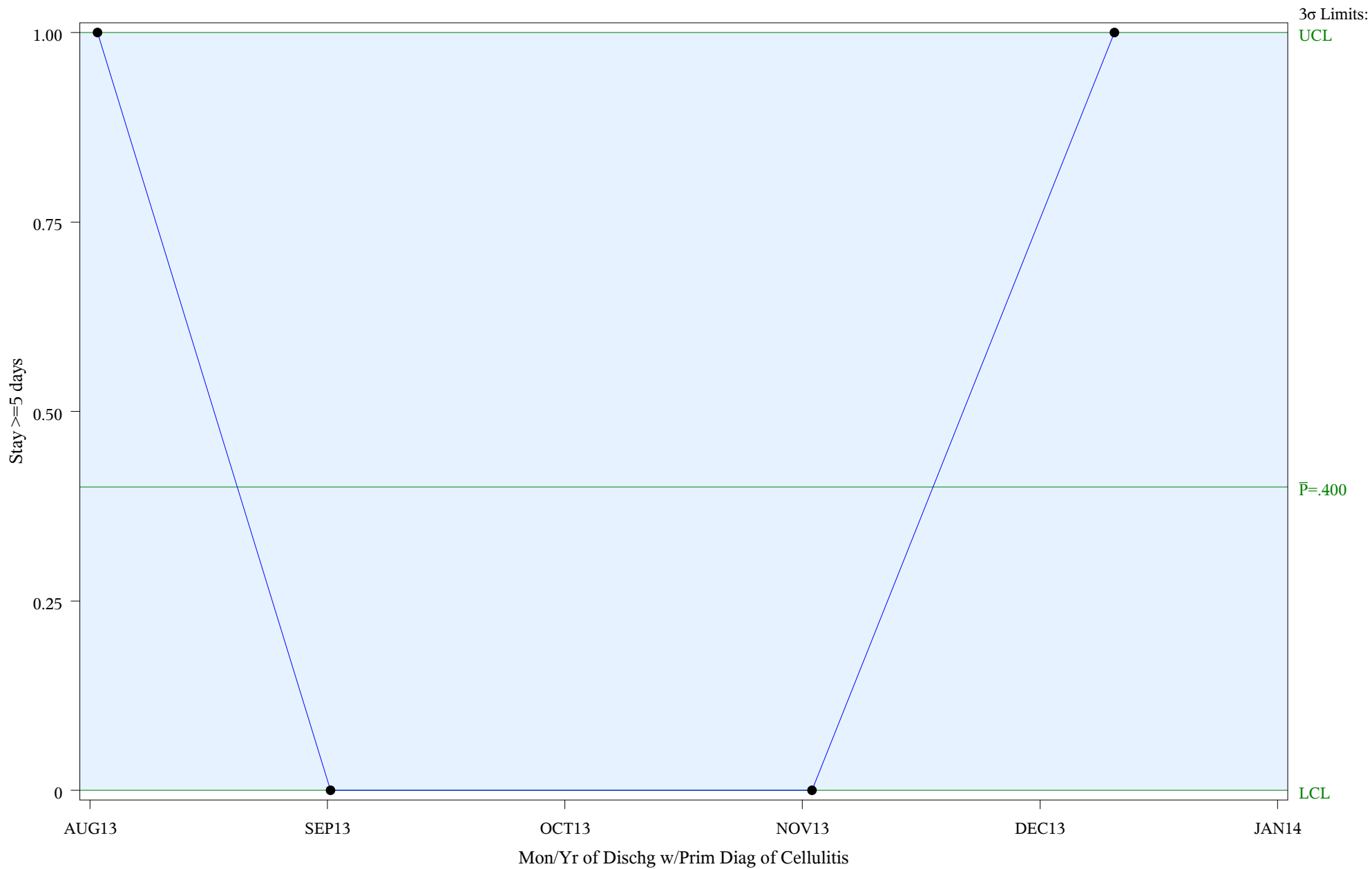
P Chart for Medical Management of Cellulitis (#5086)

Time Period: January 1, 2013 - December 31, 2013

Denom=All Admit w/Prim Diagnosis of Cellulitis, Num=Stay >=5 days

Chart created: Thursday, 30JAN2014

Hospital=Barrow - Alaska



Subgroup Sizes: Min n = 1 Max n = 2

Source: ORYX2.rate5086

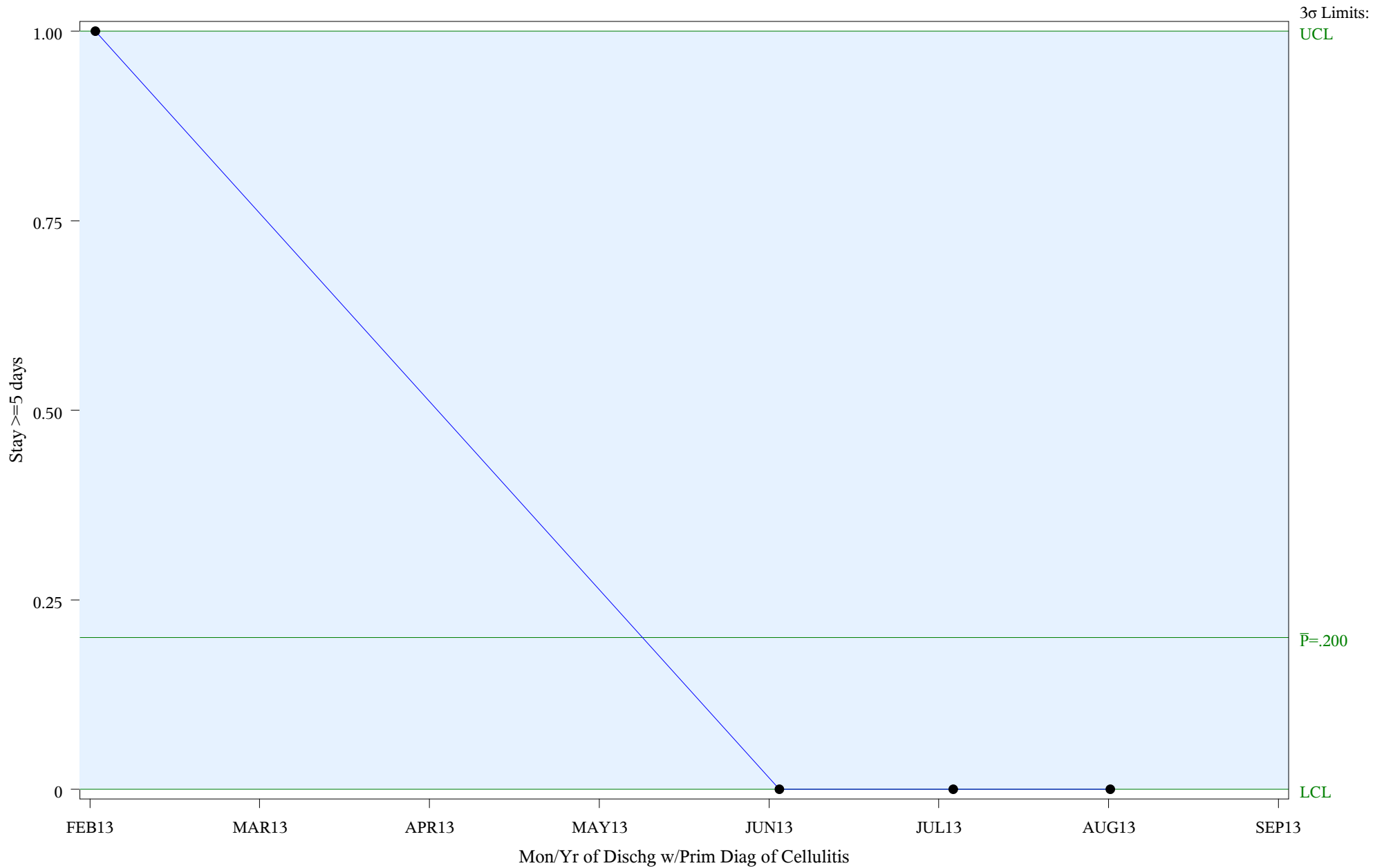
P Chart for Medical Management of Cellulitis (#5086)

Time Period: January 1, 2013 - December 31, 2013

Denom=All Admit w/Prim Diagnosis of Cellulitis, Num=Stay >=5 days

Chart created: Thursday, 30JAN2014

Hospital=Maniilaq - Alaska



Subgroup Sizes: Min n = 1 Max n = 2

Source: ORYX2.rate5086

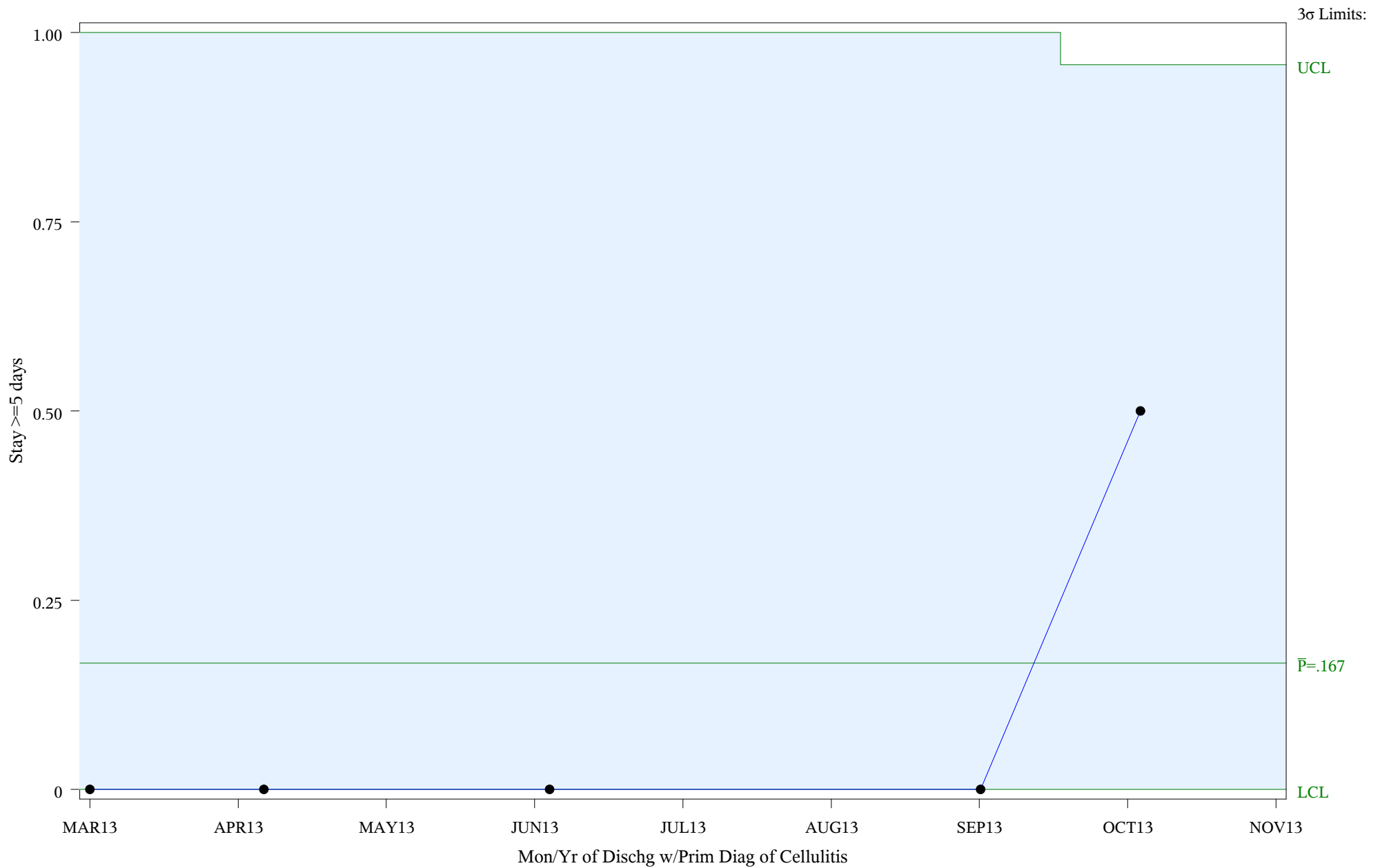
P Chart for Medical Management of Cellulitis (#5086)

Time Period: January 1, 2013 - December 31, 2013

Denom=All Admit w/Prim Diagnosis of Cellulitis, Num=Stay >=5 days

Chart created: Thursday, 30JAN2014

Hospital=Chickasaw Hospital - Oklahoma



Subgroup Sizes: Min n = 1 Max n = 2

Source: ORYX2.rate5086

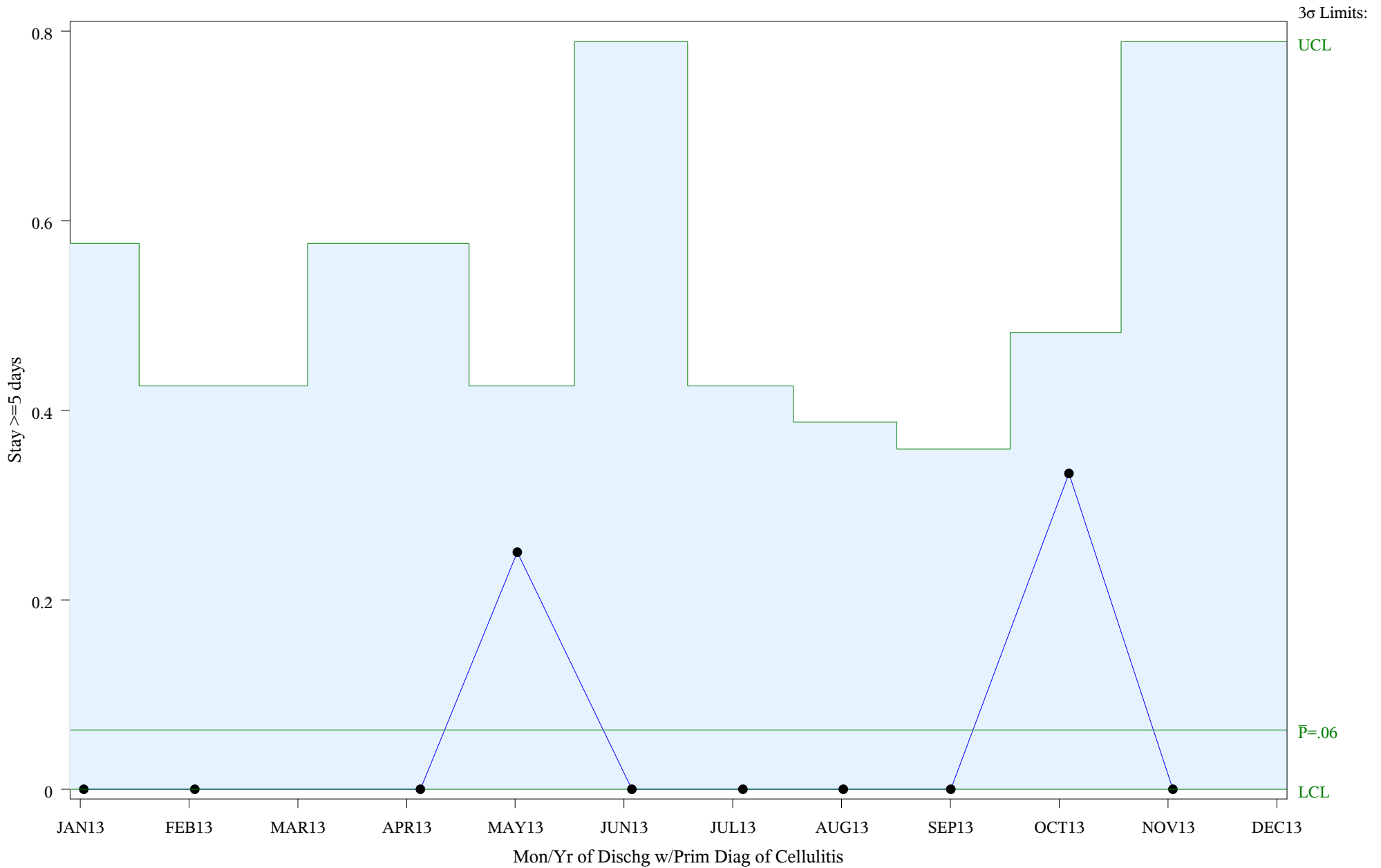
P Chart for Medical Management of Cellulitis (#5086)

Time Period: January 1, 2013 - December 31, 2013

Denom=All Admit w/Prim Diagnosis of Cellulitis, Num=Stay >=5 days

Chart created: Thursday, 30JAN2014

Hospital=Shiprock - Navajo



Subgroup Sizes: Min n = 1 Max n = 6

Source: ORYX2.rate5086