

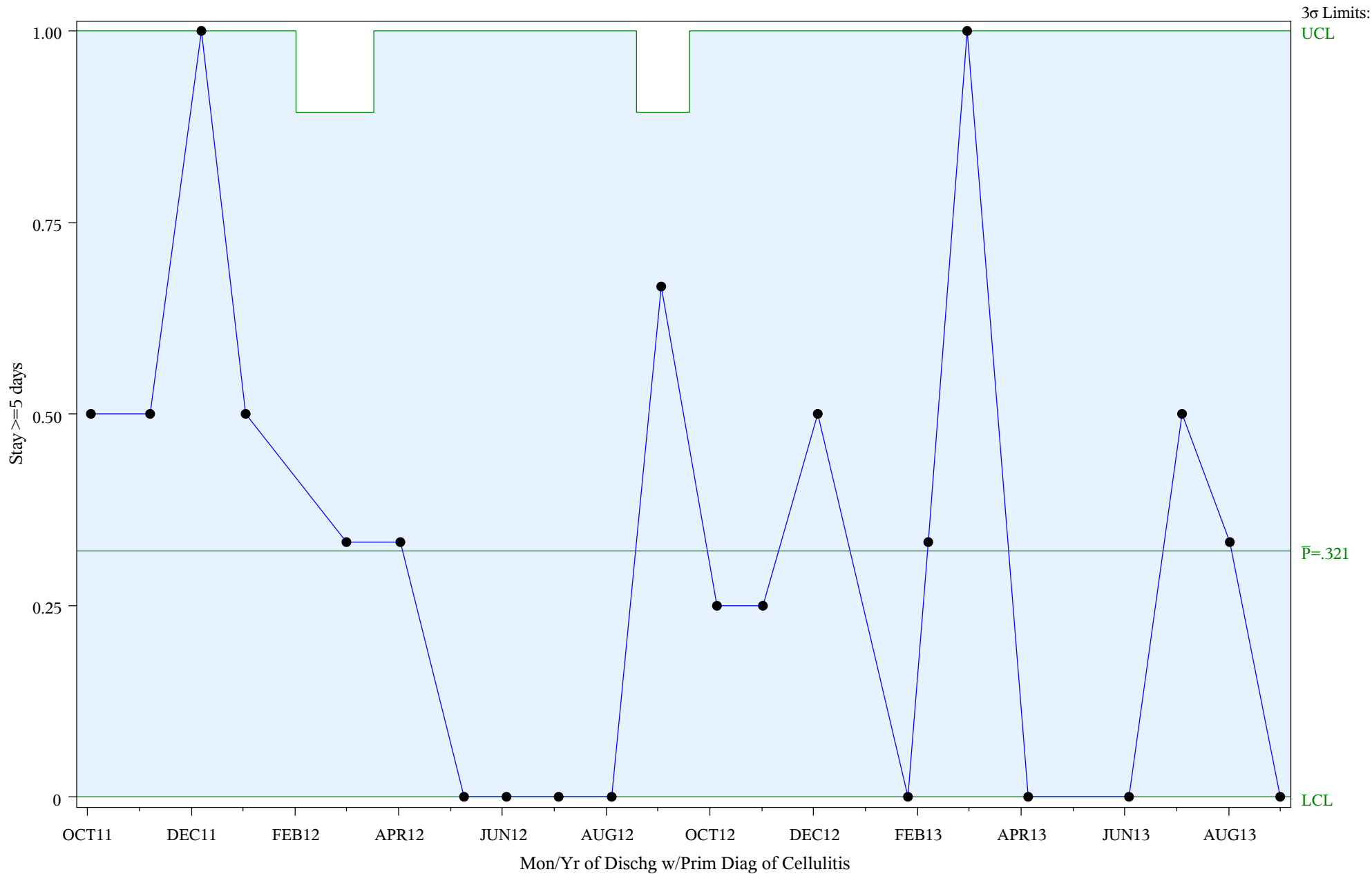
# P Chart for Medical Management of Cellulitis (#5086)

Time Period: Oct 2011 - Sep 2013

Denom=All Admit w/Prim Diagnosis of Cellulitis, Num=Stay >=5 days

Chart created: Friday, 17JAN2014

hospital=Quentin N Burdick - Aberdeen



Subgroup Sizes: Min n = 1 Max n = 6

Source: ORYX2.rate5086

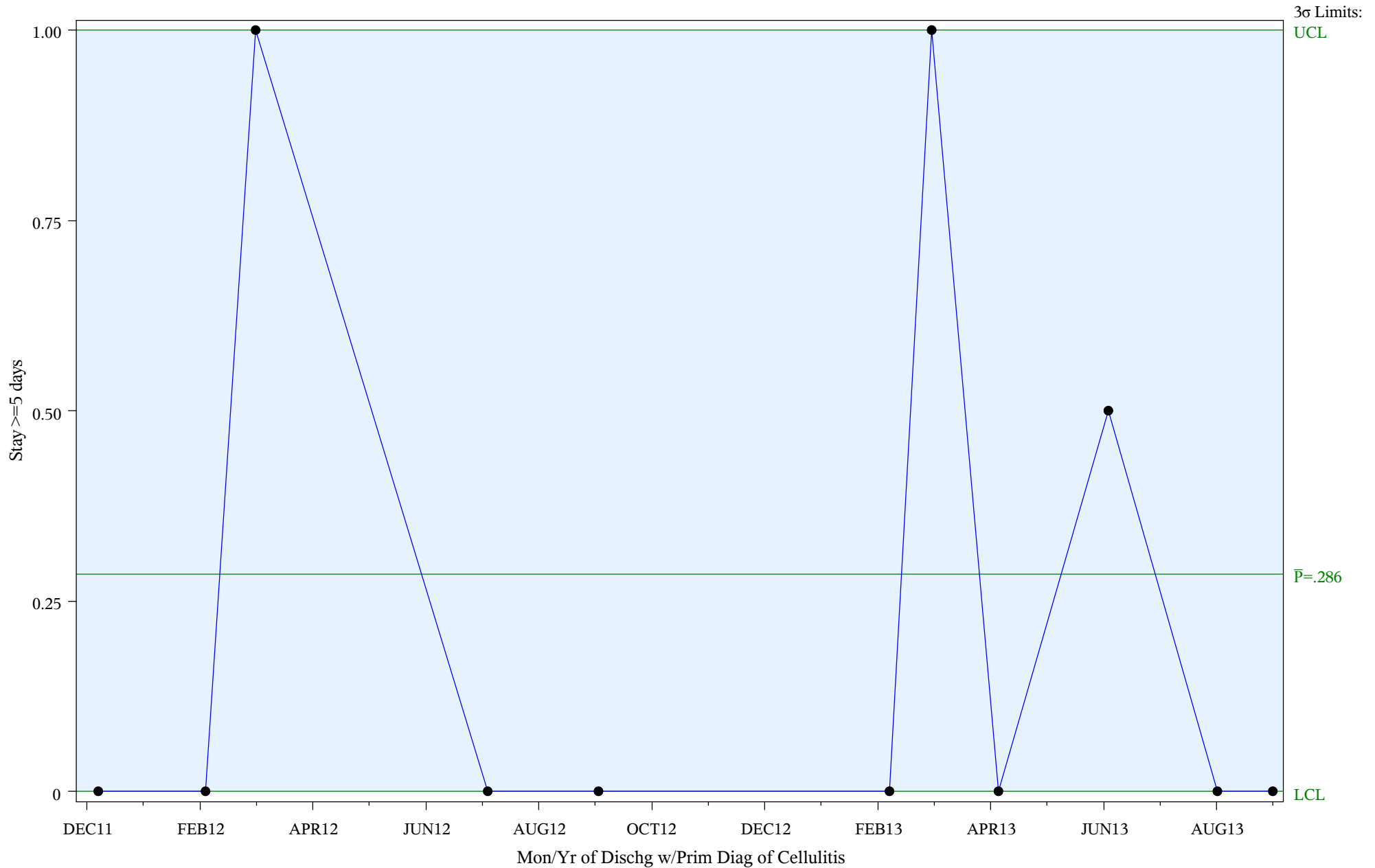
# P Chart for Medical Management of Cellulitis (#5086)

Time Period: Oct 2011 - Sep 2013

Denom=All Admit w/Prim Diagnosis of Cellulitis, Num=Stay >=5 days

Chart created: Friday, 17JAN2014

hospital=Winnebago - Aberdeen



Subgroup Sizes: Min n = 1 Max n = 2

Source: ORYX2.rate5086

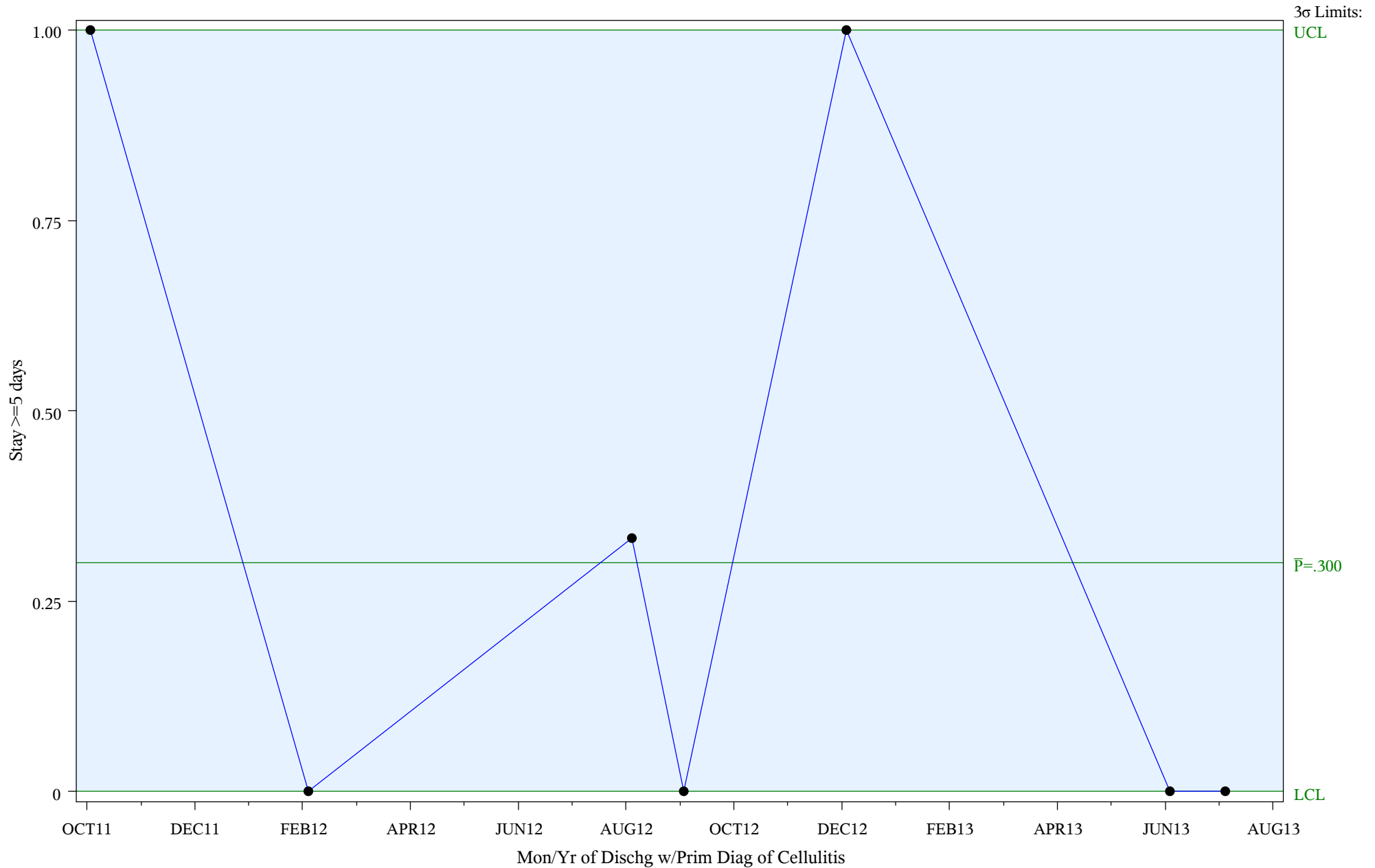
# P Chart for Medical Management of Cellulitis (#5086)

Time Period: Oct 2011 - Sep 2013

Denom=All Admit w/Prim Diagnosis of Cellulitis, Num=Stay >=5 days

Chart created: Friday, 17JAN2014

hospital=Zuni - Albuquerque



Subgroup Sizes: Min n = 1 Max n = 3

Source: ORYX2.rate5086

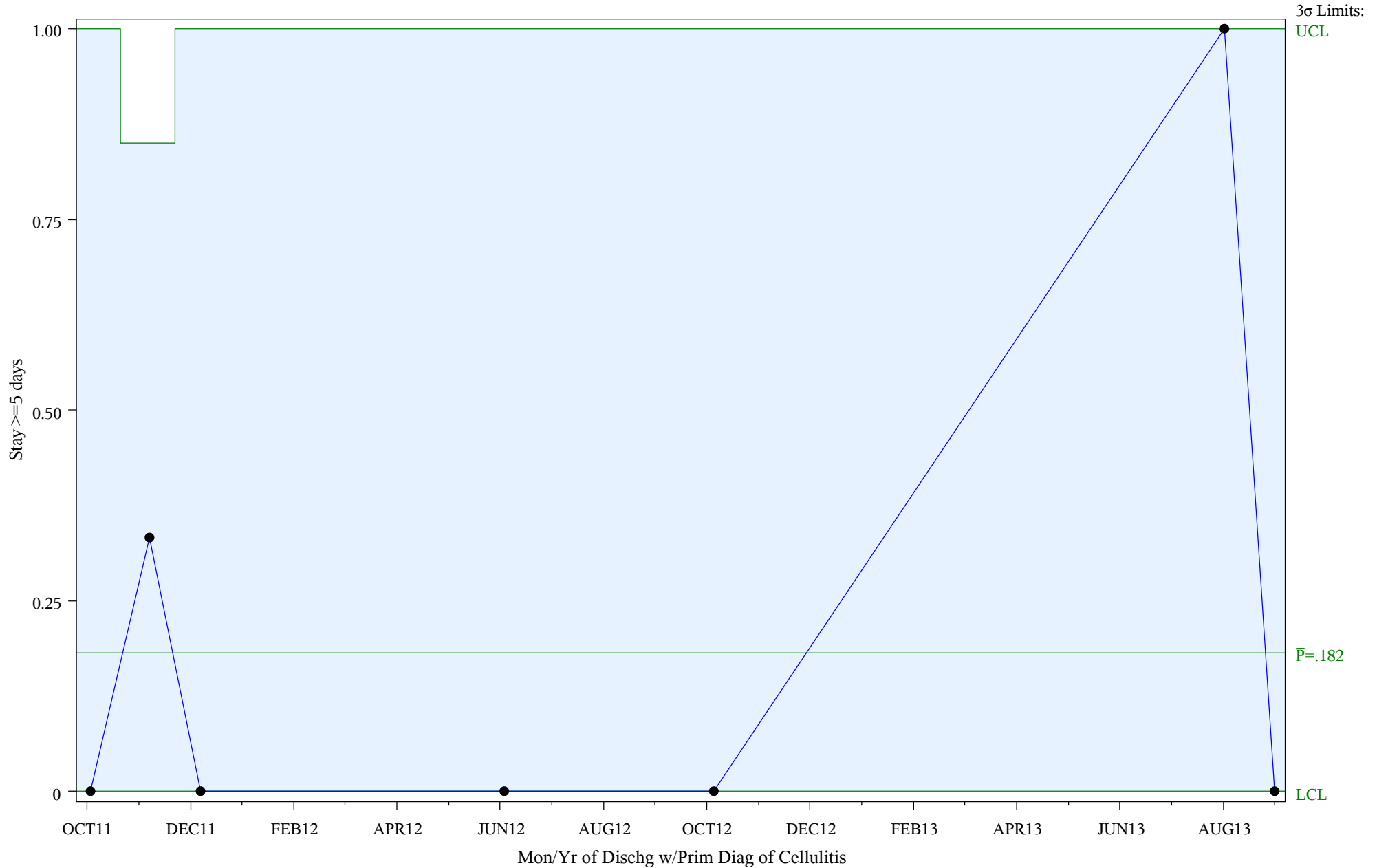
# P Chart for Medical Management of Cellulitis (#5086)

Time Period: Oct 2011 - Sep 2013

Denom=All Admit w/Prim Diagnosis of Cellulitis, Num=Stay >=5 days

Chart created: Friday, 17JAN2014

hospital=Barrow - Alaska



Subgroup Sizes: Min n = 1 Max n = 3

Source: ORYX2.rate5086

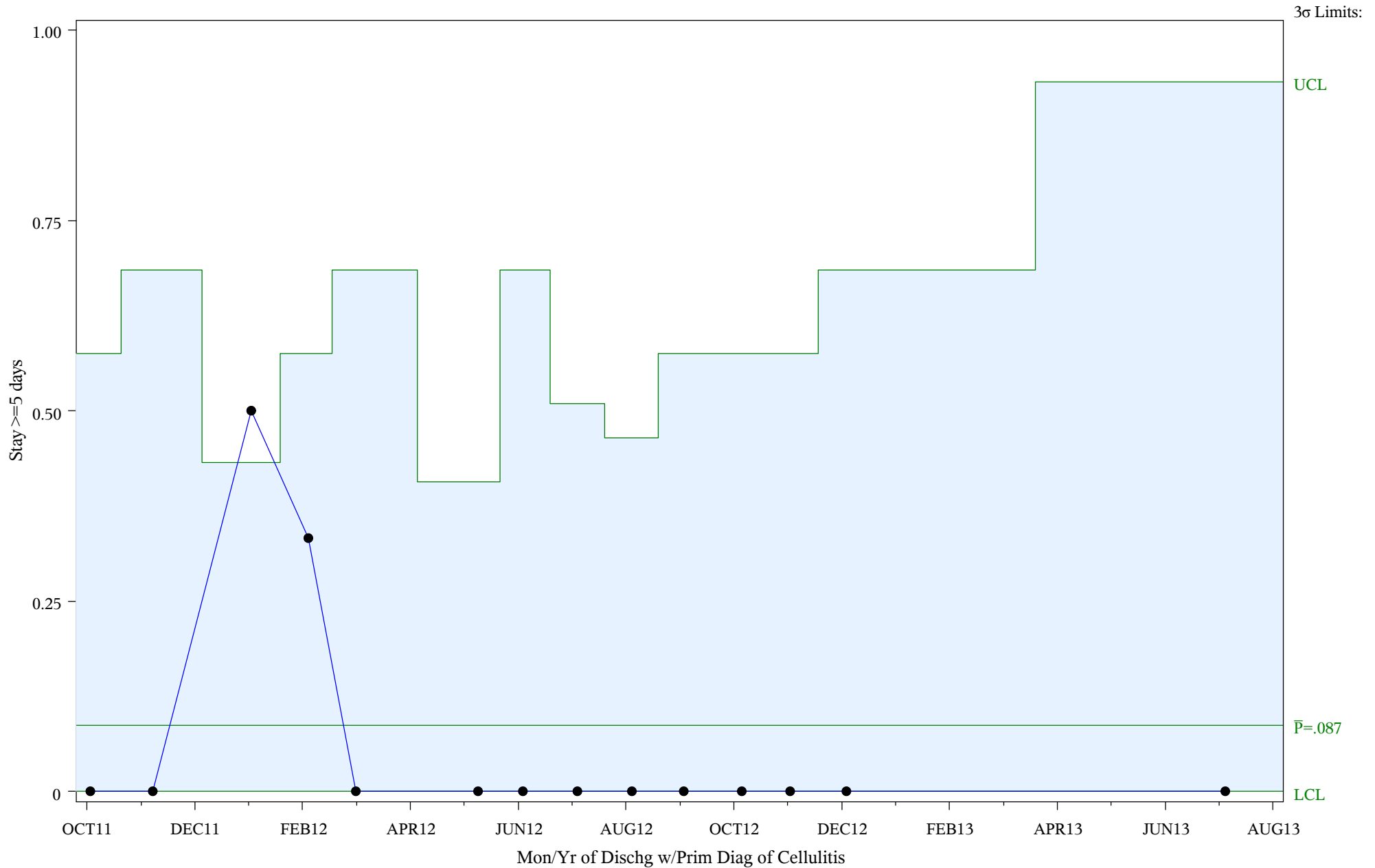
# P Chart for Medical Management of Cellulitis (#5086)

Time Period: Oct 2011 - Sep 2013

Denom=All Admit w/Prim Diagnosis of Cellulitis, Num=Stay >=5 days

Chart created: Friday, 17JAN2014

hospital=YK Health - Alaska



Subgroup Sizes: Min n = 1 Max n = 7

Source: ORYX2.rate5086

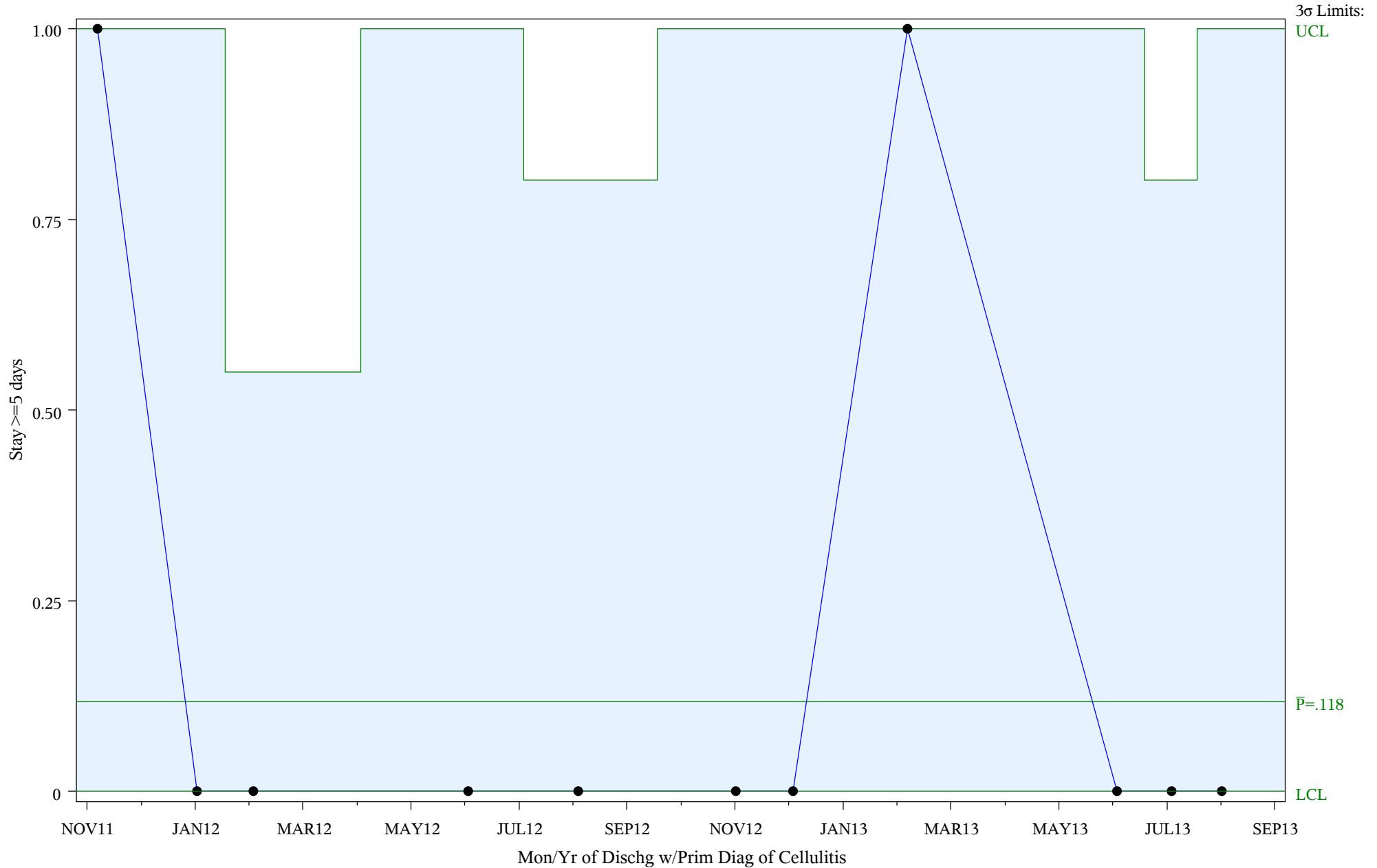
# P Chart for Medical Management of Cellulitis (#5086)

Time Period: Oct 2011 - Sep 2013

Denom=All Admit w/Prim Diagnosis of Cellulitis, Num=Stay >=5 days

Chart created: Friday, 17JAN2014

hospital=Maniilaq - Alaska



Subgroup Sizes: Min n = 1 Max n = 5

Source: ORYX2.rate5086

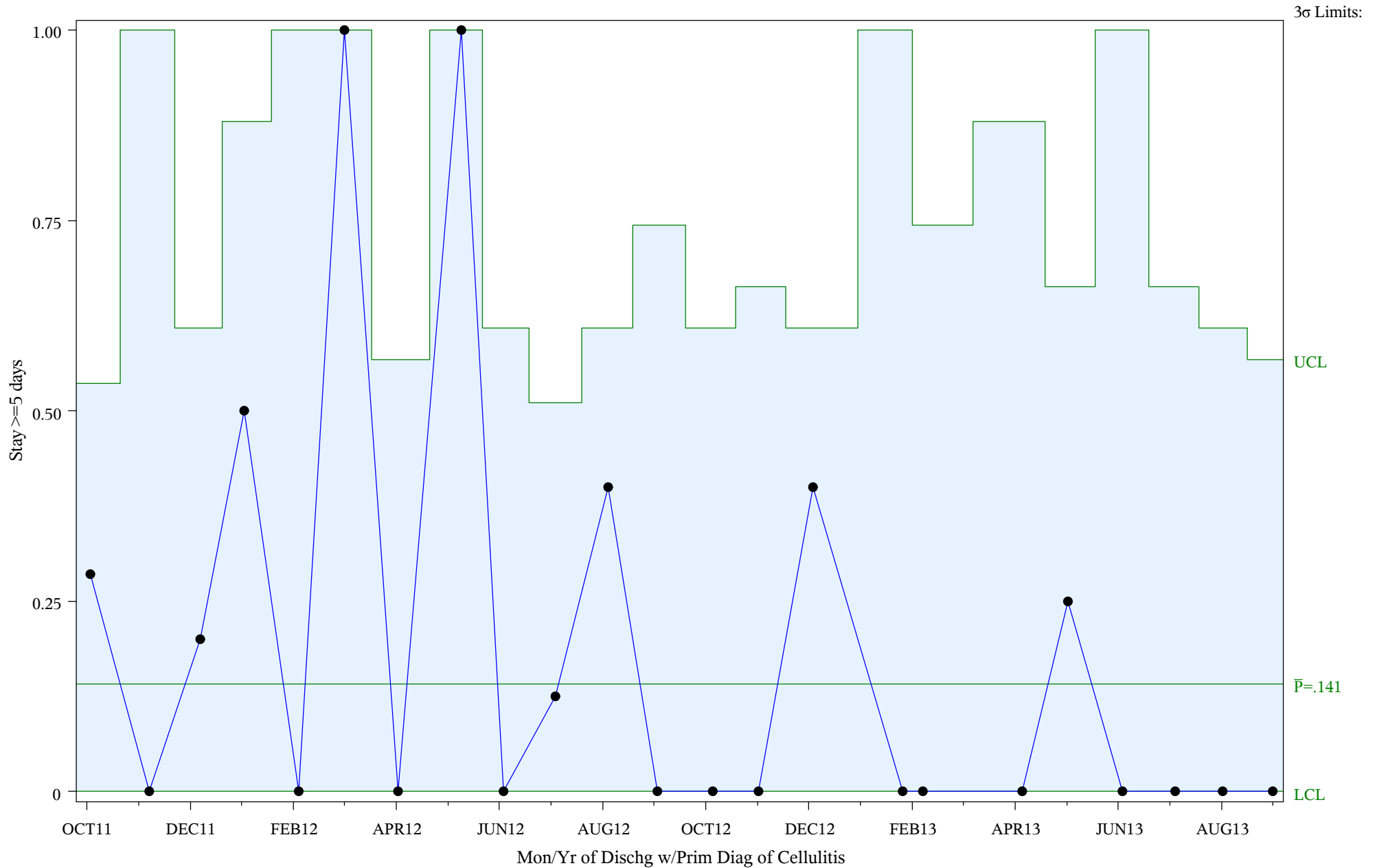
# P Chart for Medical Management of Cellulitis (#5086)

Time Period: Oct 2011 - Sep 2013

Denom=All Admit w/Prim Diagnosis of Cellulitis, Num=Stay >=5 days

Chart created: Friday, 17JAN2014

hospital=Shiprock - Navajo



Subgroup Sizes: Min n = 1 Max n = 8

Source: ORYX2.rate5086