

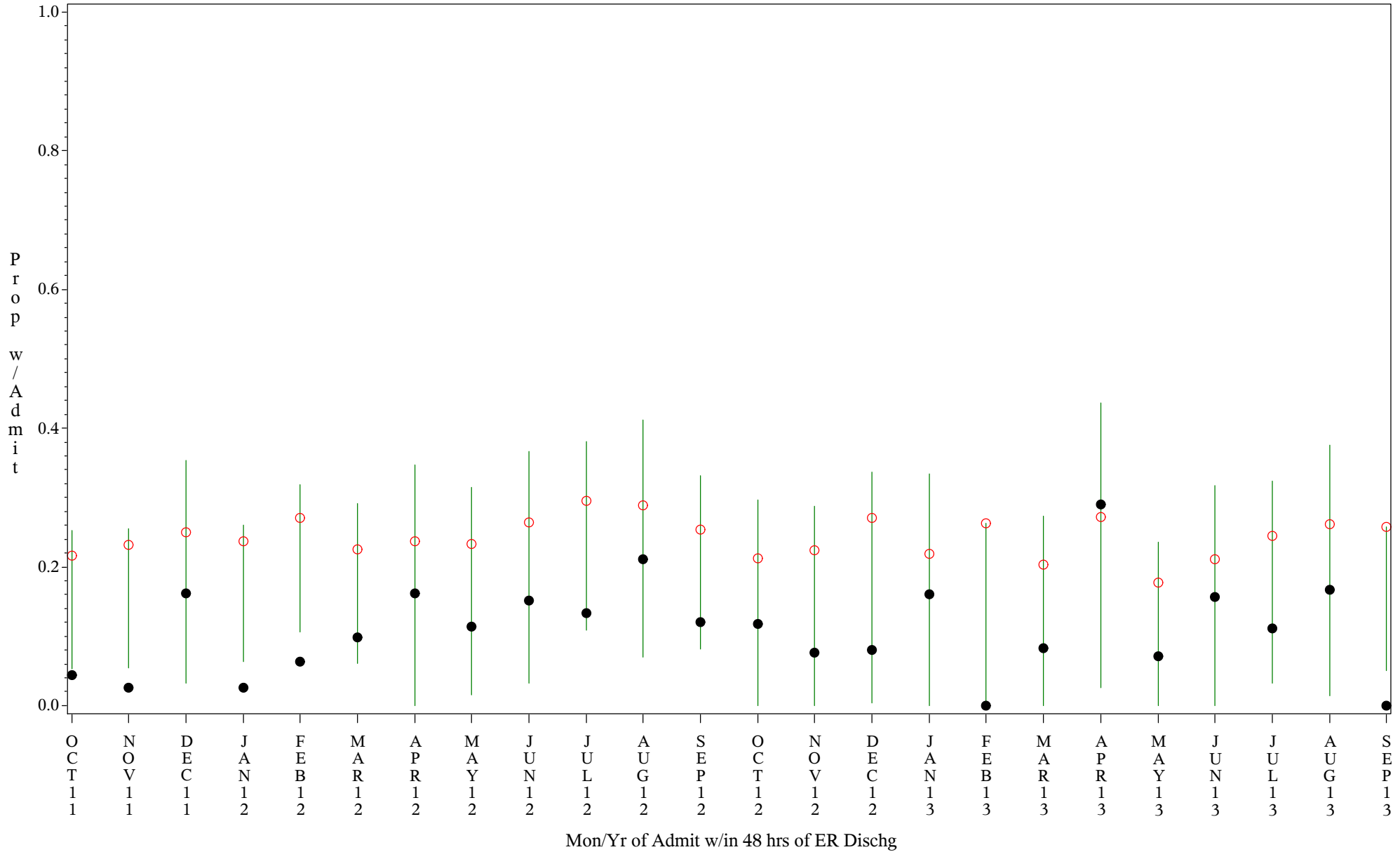
# Comp Chart for Inadeq Treatment in Emerg Patients (#5161)

Time Period: Oct 2011 - Sep 2013

Denom=All ER Admits, Numer=Any Admit w/in 48 hrs of ER Dischg

Chart created: Friday, 17JAN2014

hospital=Quentin N Burdick - Aberdeen



PLOT ● Organization's Observed Rate ○ Expected Rate-Comparison Group

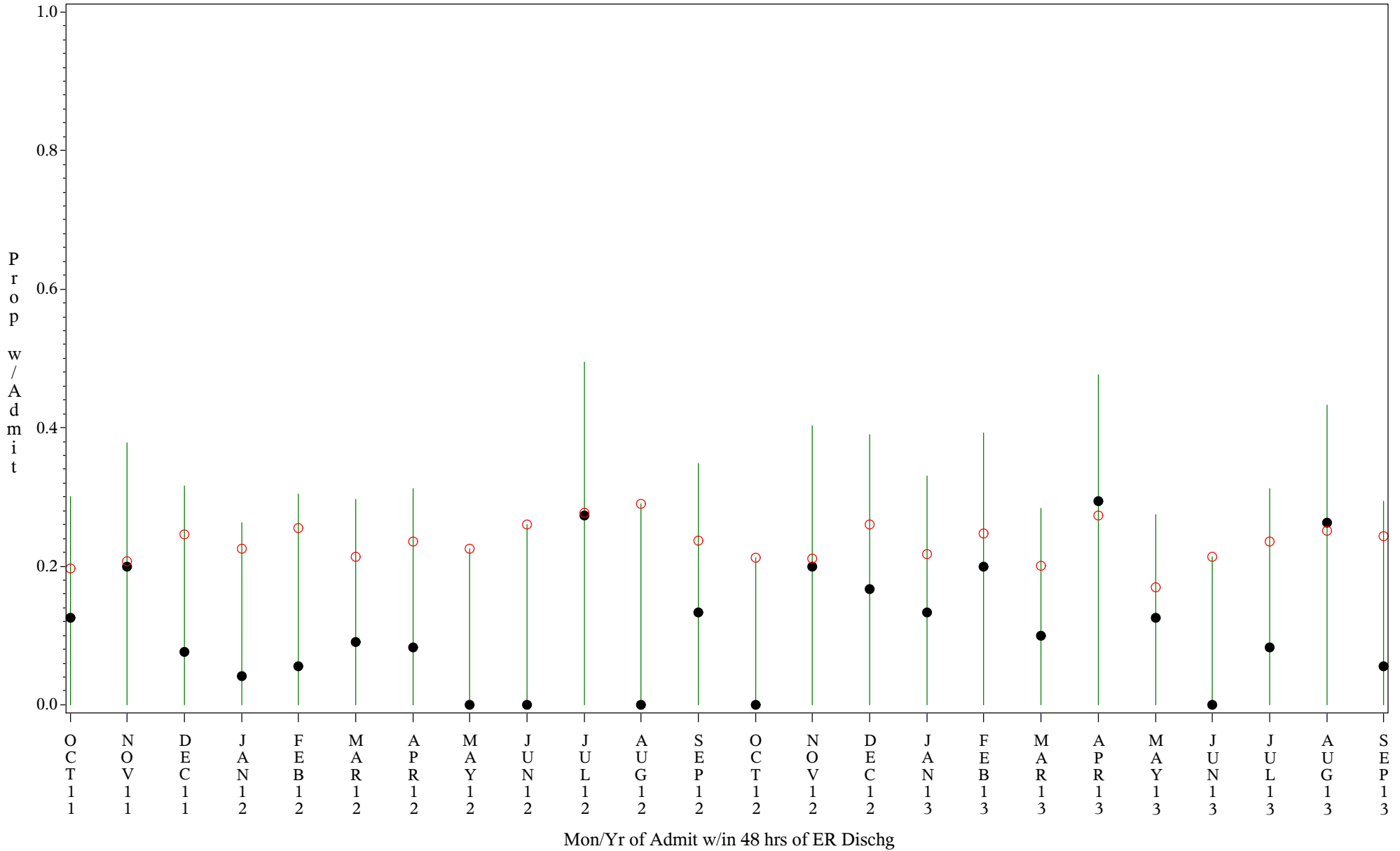
# Comp Chart for Inadeq Treatment in Emerg Patients (#5161)

Time Period: Oct 2011 - Sep 2013

Denom=All ER Admits, Numer=Any Admit w/in 48 hrs of ER Dischg

Chart created: Friday, 17JAN2014

hospital=Winnebago - Aberdeen



PLOT ● Organization's Observed Rate ○ Expected Rate-Comparison Group

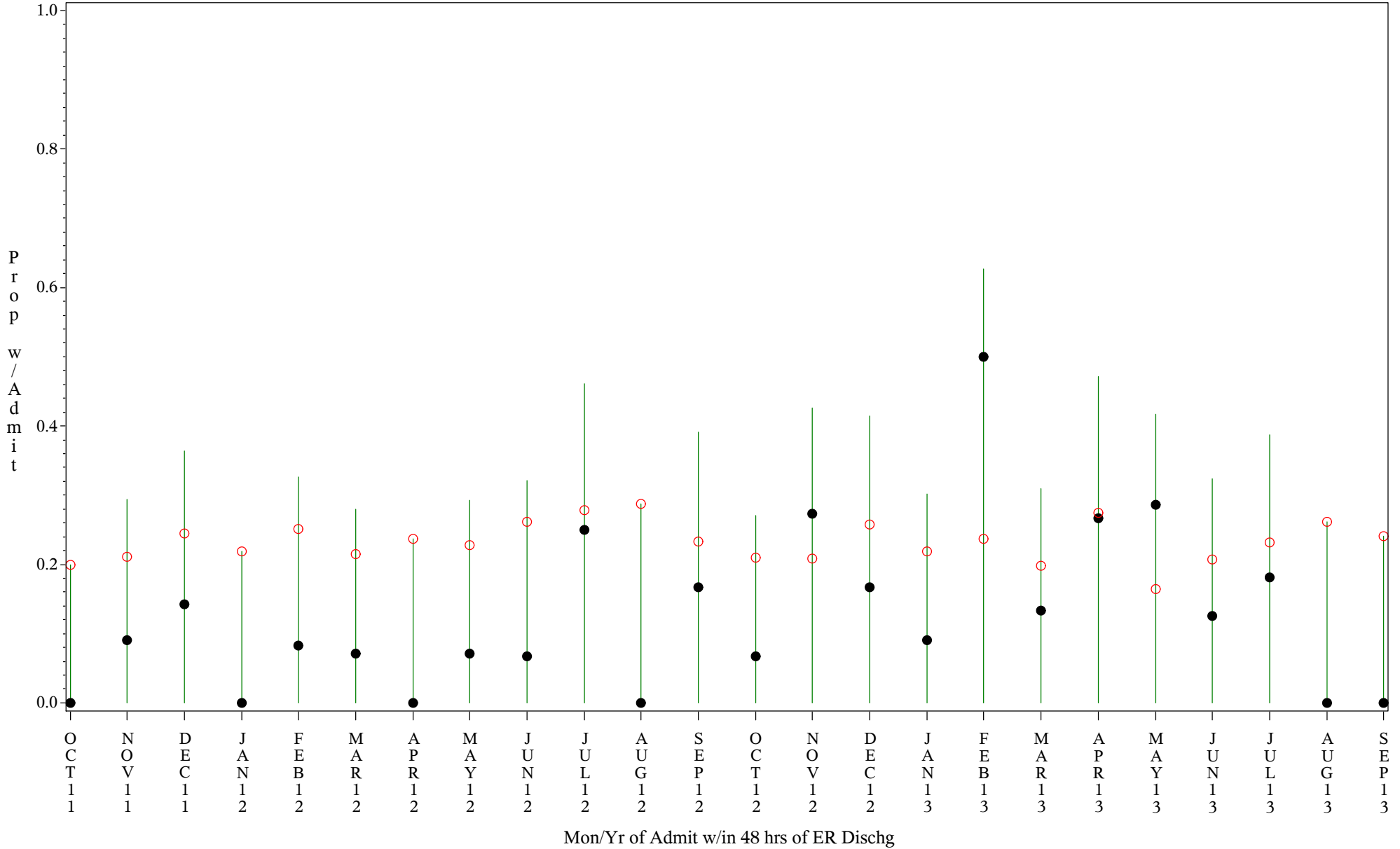
# Comp Chart for Inadeq Treatment in Emerg Patients (#5161)

Time Period: Oct 2011 - Sep 2013

Denom=All ER Admits, Numer=Any Admit w/in 48 hrs of ER Dischg

Chart created: Friday, 17JAN2014

hospital=Barrow - Alaska



PLOT ● Organization's Observed Rate ○ Expected Rate-Comparison Group

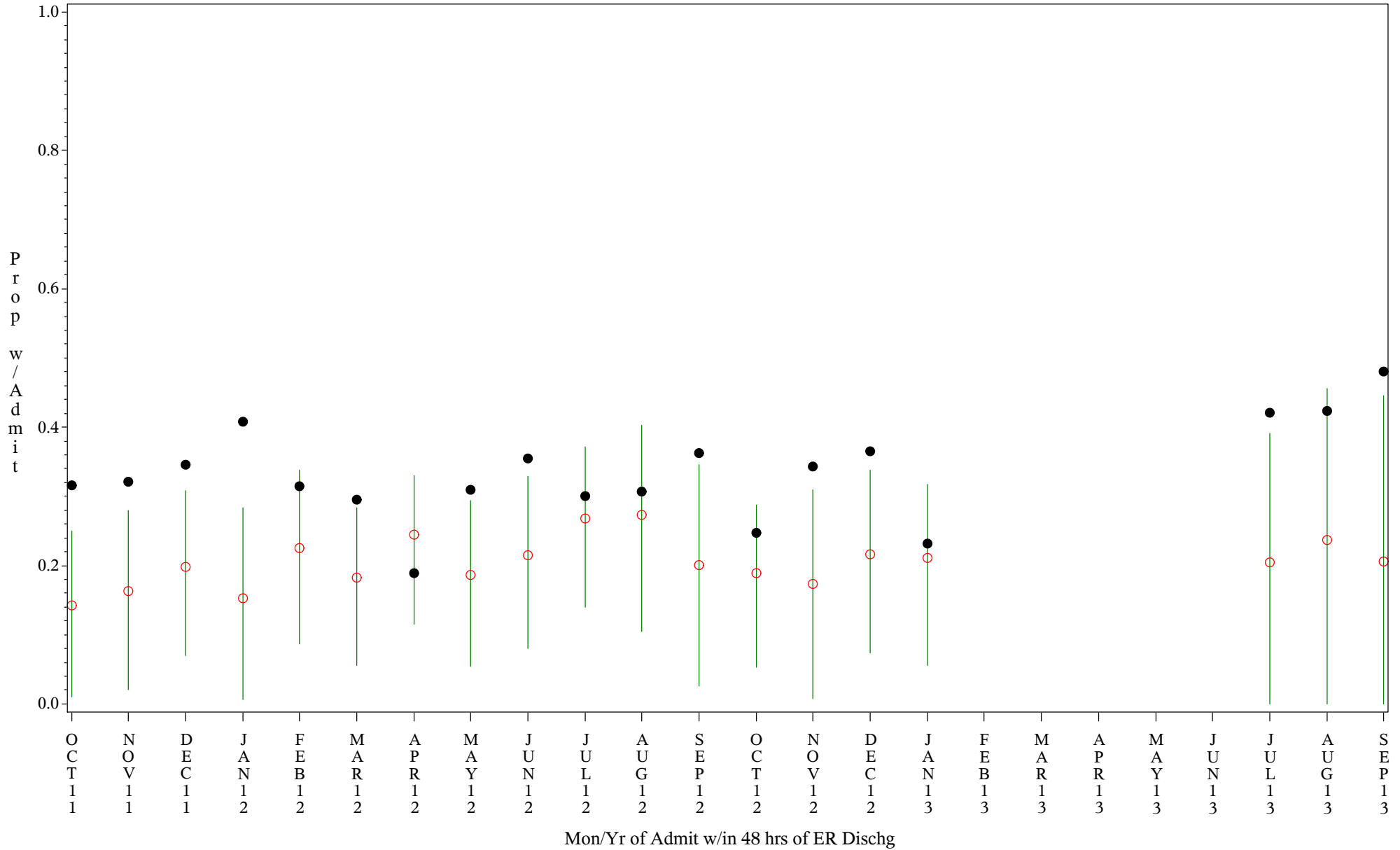
# Comp Chart for Inadeq Treatment in Emerg Patients (#5161)

Time Period: Oct 2011 - Sep 2013

Denom=All ER Admits, Numer=Any Admit w/in 48 hrs of ER Dischg

Chart created: Friday, 17JAN2014

hospital=YK Health - Alaska



PLOT ● Organization's Observed Rate ○ Expected Rate-Comparison Group

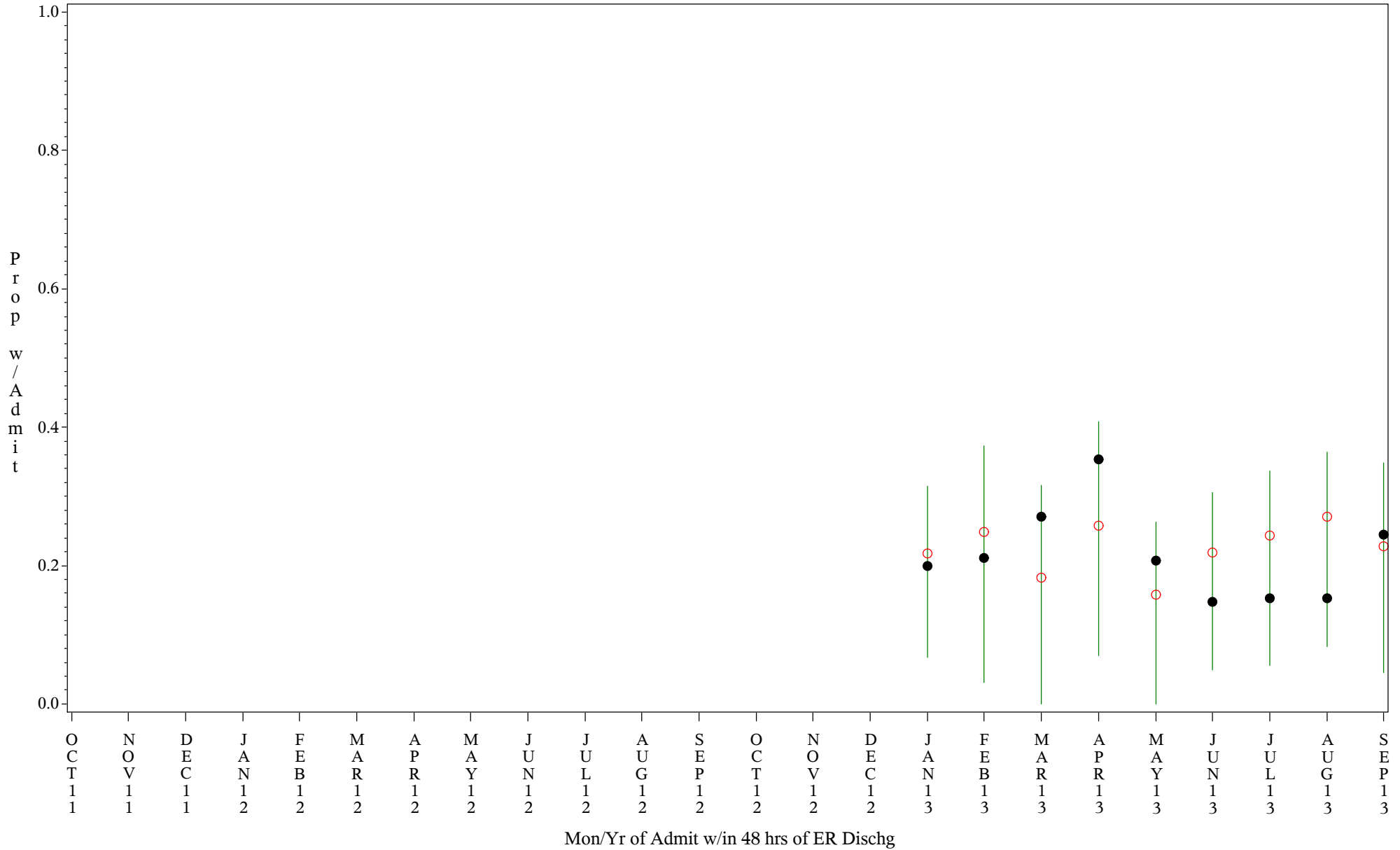
# Comp Chart for Inadeq Treatment in Emerg Patients (#5161)

Time Period: Oct 2011 - Sep 2013

Denom=All ER Admits, Numer=Any Admit w/in 48 hrs of ER Dischg

Chart created: Friday, 17JAN2014

hospital=Chickasaw Hospital - Oklahoma



PLOT ● Organization's Observed Rate ○ Expected Rate-Comparison Group

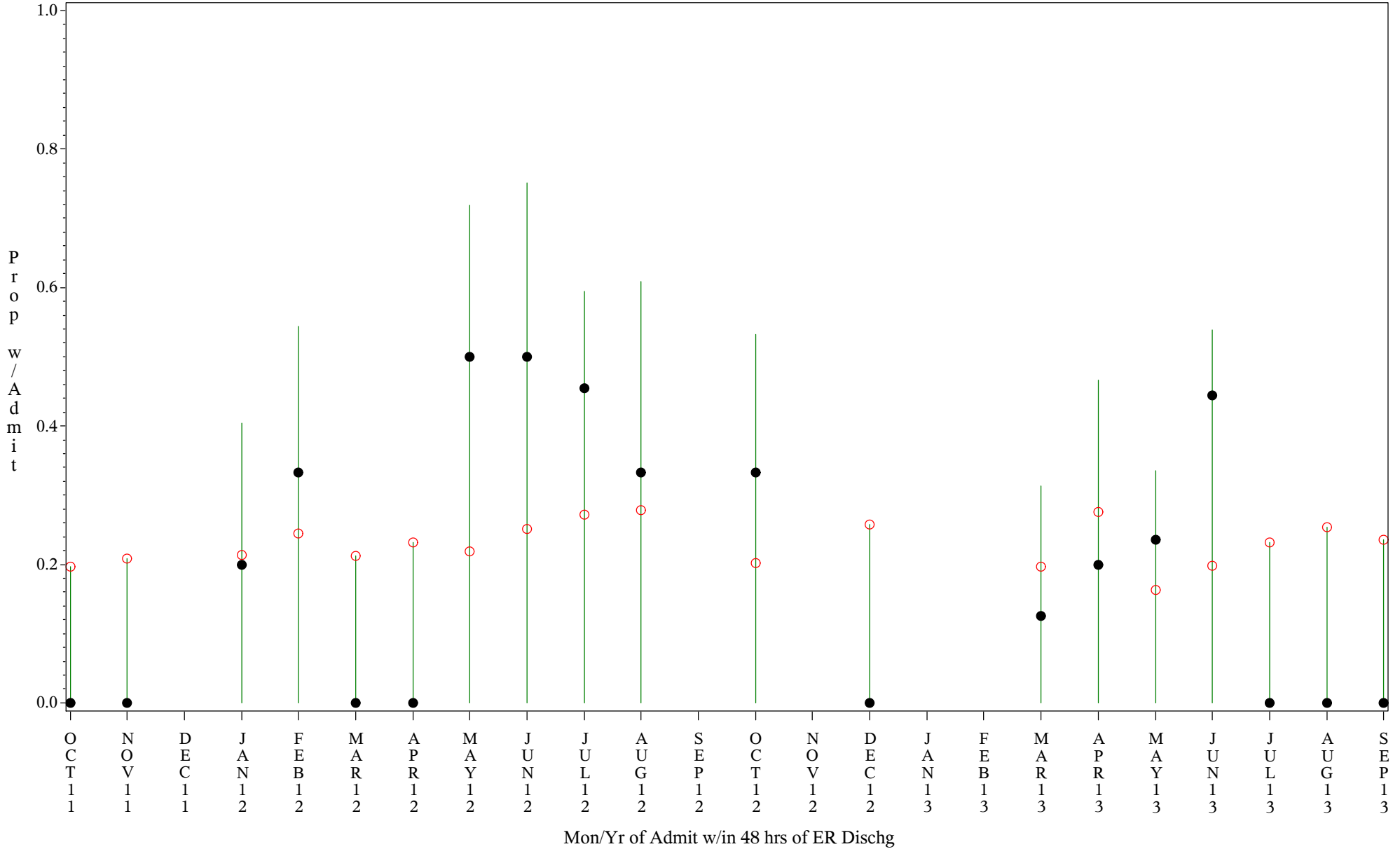
# Comp Chart for Inadeq Treatment in Emerg Patients (#5161)

Time Period: Oct 2011 - Sep 2013

Denom=All ER Admits, Numer=Any Admit w/in 48 hrs of ER Dischg

Chart created: Friday, 17JAN2014

hospital=San Carlos - Phoenix



PLOT ● Organization's Observed Rate ○ Expected Rate-Comparison Group

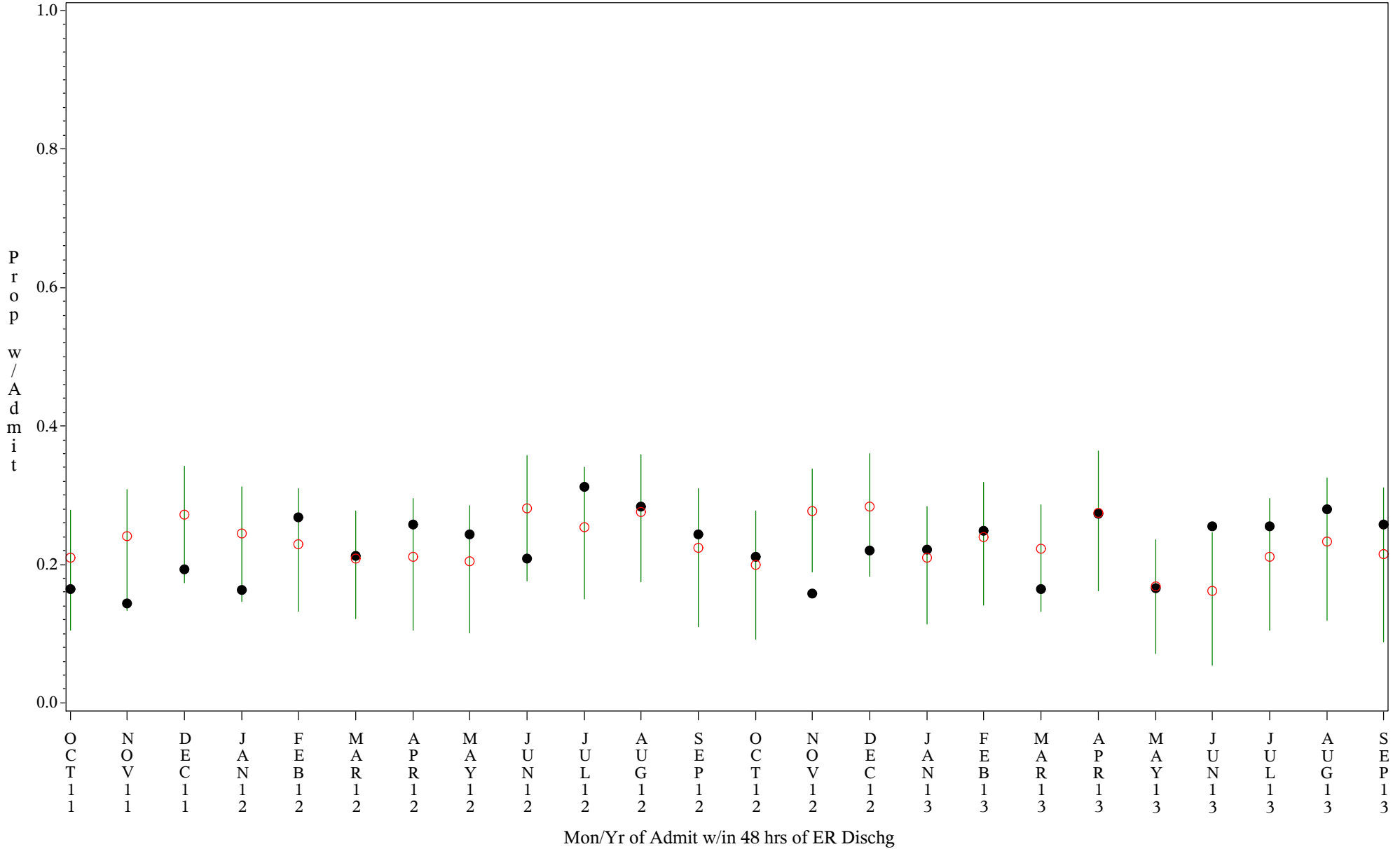
# Comp Chart for Inadeq Treatment in Emerg Patients (#5161)

Time Period: Oct 2011 - Sep 2013

Denom=All ER Admits, Numer=Any Admit w/in 48 hrs of ER Dischg

Chart created: Friday, 17JAN2014

hospital=GIMC - Navajo



PLOT ● Organization's Observed Rate ○ Expected Rate-Comparison Group

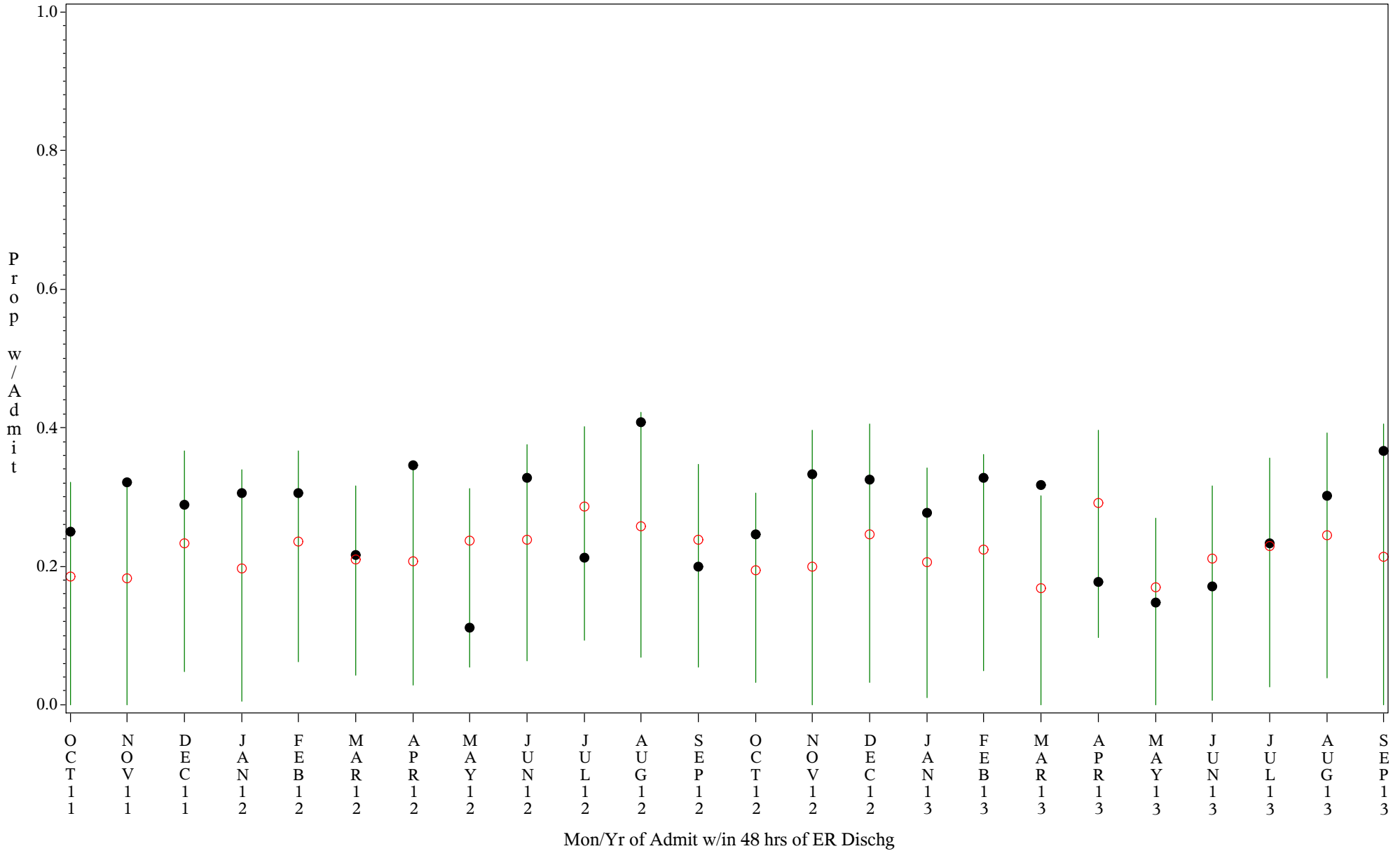
# Comp Chart for Inadeq Treatment in Emerg Patients (#5161)

Time Period: Oct 2011 - Sep 2013

Denom=All ER Admits, Numer=Any Admit w/in 48 hrs of ER Dischg

Chart created: Friday, 17JAN2014

hospital=Shiprock - Navajo



PLOT ● Organization's Observed Rate ○ Expected Rate-Comparison Group