

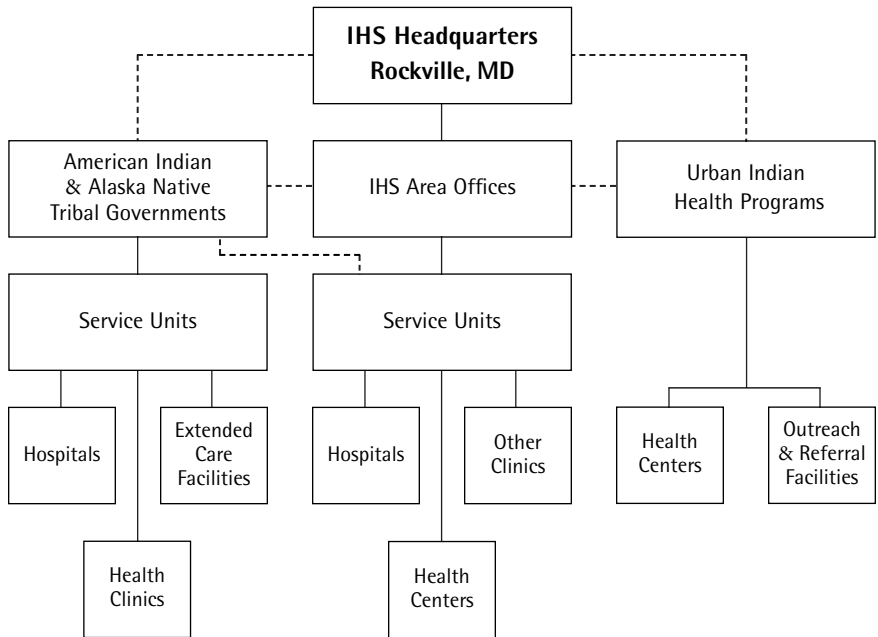
# Part 1

## Indian Health Service Structure

**Chart 1.1**

*Indian Health Service*

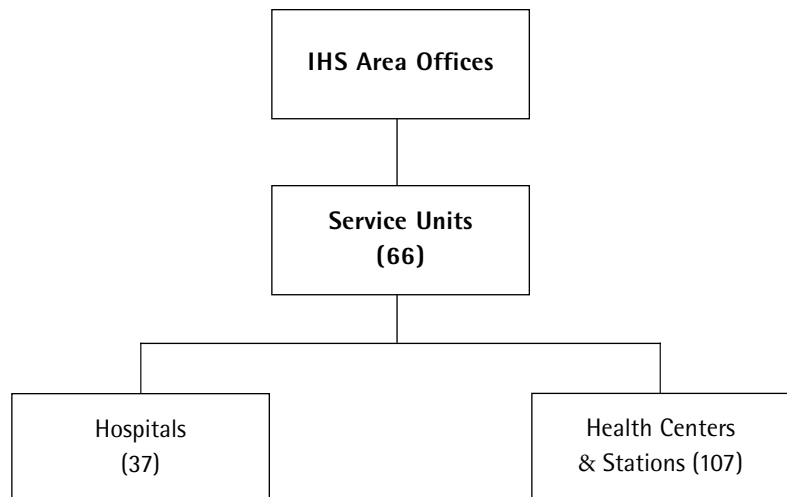
The Indian Health Service is composed of 12 regional administrative units called Area Offices. Some of the health programs are operated by Tribes, and there are a limited number of projects to serve Indians living in urban areas.



**Chart 1.2**

*Indian Health Service  
Area Offices*

There were 66 Indian Health Service-operated service units that administered 37 hospitals and 107 health centers, school health centers, and health stations as of October 1, 1998.

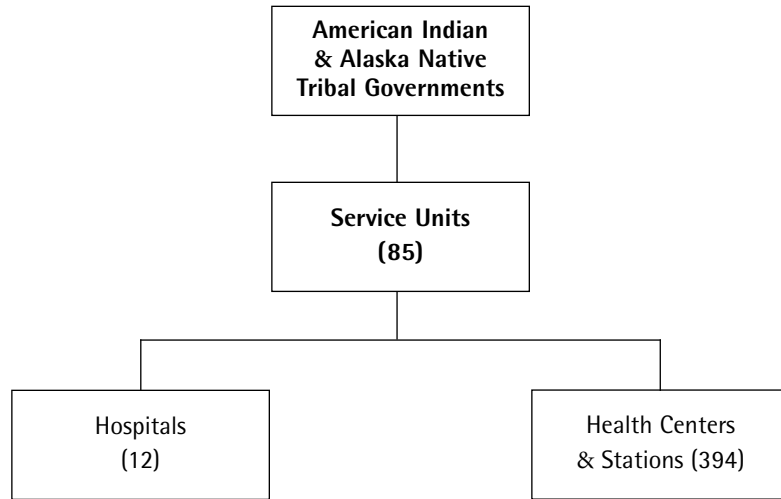


**Part 1** *Indian Health Service Structure*

**Chart 1.3**

*Indian and Alaska Native Tribal Governments*

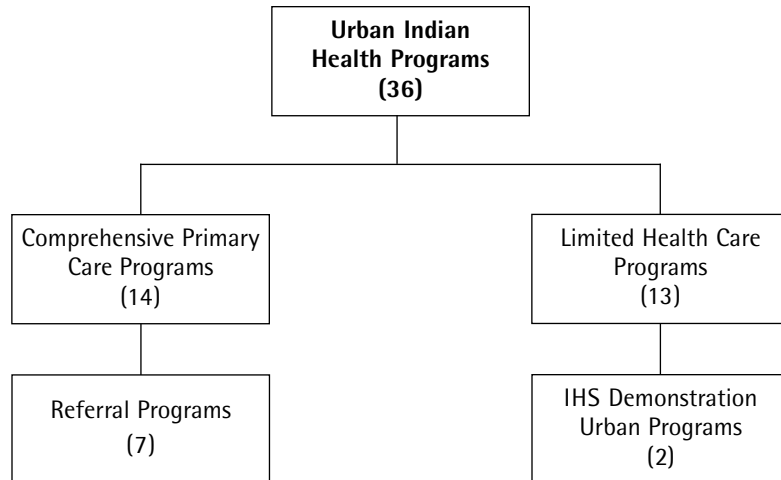
There were 85 Tribally operated service units that administered 12 hospitals and 394 health centers, school health centers, health stations, and Alaska village clinics as of October 1, 1998.



**Chart 1.4**

*Urban Indian Health Programs*

There were 36 Urban Indian Health Programs as of August 1, 2000. The Urban Indian programs include comprehensive primary health care, limited health care, referral, and demonstration programs.



**Part 1 Indian Health Service Structure**

**Chart 1.5**

*Number of Facilities Operated by Indian Health Service and Tribes as of October 1, 1998*

Indian Health Service operated 37 hospitals, 59 health centers, 4 school health centers, and 44 health stations as of October 1, 1998. Tribes can operate a facility under a P.L. 93-638 self-determination contract (Title I) or self-governance compact (Title III). Tribes operated 12 hospitals (Title I, 3 hospitals and Title III, 9 hospitals), 155 health centers (Title I, 98 and Title III, 57), 3 school health centers (Title I, 1 and Title III, 2), 76 health stations (Title I, 60 and Title III, 16), and 160 Alaska village clinics (Title I, 16 and Title III, 144).

Type of Facility	Total	IHS	Tribal		
			Total	I	III
Hospitals	49	37	12	3	9
Ambulatory Facilities	501	107	394	175	219
Health Centers	214	59	155	98	57
School Health Centers	7	4	3	1	2
Health Stations	120	44	76	60	16
Alaska Village Clinics	160	—	160	16	144

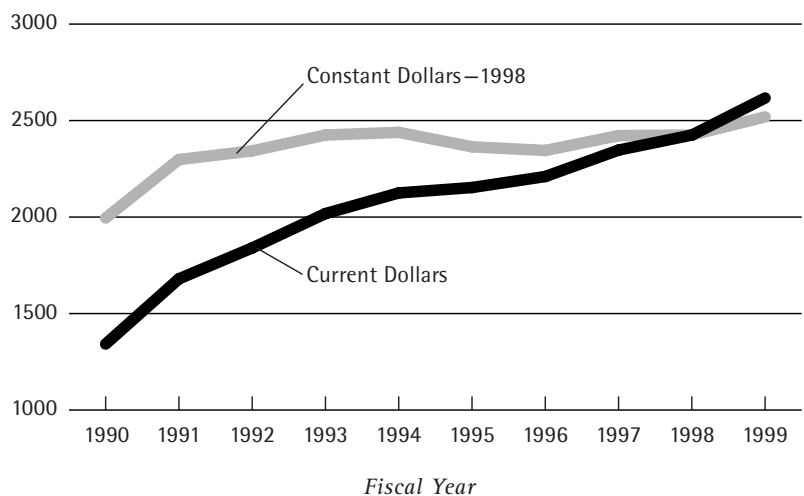
*I—operated under Title I, P.L. 93-638 Self-Determination Contracts  
 III—operated under Title III, P.L. 93-638 Self-Governance Compacts*

**Chart 1.6**

*Trend in Indian Health Service Budget*

The Indian Health Service budget (appropriations and collections) has increased 95 percent from FY 1990 to FY 1999. However, in constant 1998 dollars, the budget has only increased 26 percent.

*Dollars in millions*



## Part 1 Indian Health Service Structure

**Table 1.6**

*Trend in Indian Health Service Budget*

(Dollars in thousands)

Category	FY 1990	FY 1991	FY 1992	FY 1993	FY 1994	FY 1995	FY 1996	FY 1997	FY 1998	FY 1999
Clinical Services	1,031,072	1,235,481	1,276,185	1,251,660	1,325,462	1,370,421	1,417,641	1,368,639	1,476,854	1,542,326
Preventive Health Services	77,630	89,978	64,951	70,011	74,464	77,032	78,018	79,346	82,770	87,120
Other Services										
Urban Health	13,049	15,687	17,195	20,965	22,834	23,349	23,360	24,768	25,288	26,382
Indian Health Professions	9,540	13,380	19,205	26,092	27,406	27,479	26,271	28,270	28,720	29,623
Tribal Management	2,562	4,235	5,038	5,161	5,285	5,048	2,348	2,348	2,348	2,390
Direct Operations/ Agency Management	44,484	52,406	49,029	48,659	49,471	49,709	49,260	133,088	47,386	49,309
Self Governance	—	—	—	1,884	4,980	8,594	9,104	9,090	9,106	9,391
Contract Support Cost	—	—	—	100,558	136,186	145,460	154,840	161,202	168,702	203,781
Sub-Total Other	69,635	85,708	90,467	203,319	246,162	259,639	265,183	358,766	281,550	320,876
Total Services	1,178,337	1,411,167	1,431,603	1,524,990	1,646,088	1,707,092	1,760,842	1,806,751	1,841,174	1,950,322
Facilities	71,633	166,402	274,351	333,640	296,982	252,982	238,958	247,249	257,538	291,965
<b>Total Services &amp; Facilities<sup>1</sup></b>	1,249,970	1,577,569	1,705,954	1,858,630	1,943,070	1,960,074	1,999,800	2,054,000	2,098,712	2,242,287
Medicare/Medicaid Collections	88,097	94,301	121,628	140,805	159,605	162,066	176,536	260,913	288,927	334,576 <sup>2</sup>
Private Insurance Collections	3,500	8,326	12,350	18,184	22,700	31,233	33,784	32,335	37,448	39,960 <sup>2</sup>
<b>Total IHS<sup>3</sup> (Current \$s)</b>	1,341,567	1,680,196	1,839,932	2,017,619	2,125,375	2,153,373	2,210,120	2,347,248	2,425,087	2,616,823
<b>Total IHS<sup>3</sup> (Constant \$s)<sup>4</sup></b>	1,995,045	2,298,166	2,343,227	2,425,350	2,438,641	2,364,316	2,344,742	2,422,288	2,425,087	2,518,895

<sup>1</sup> Total IHS appropriations.

<sup>2</sup> Estimated collections.

<sup>3</sup> Total dollars available to spend.

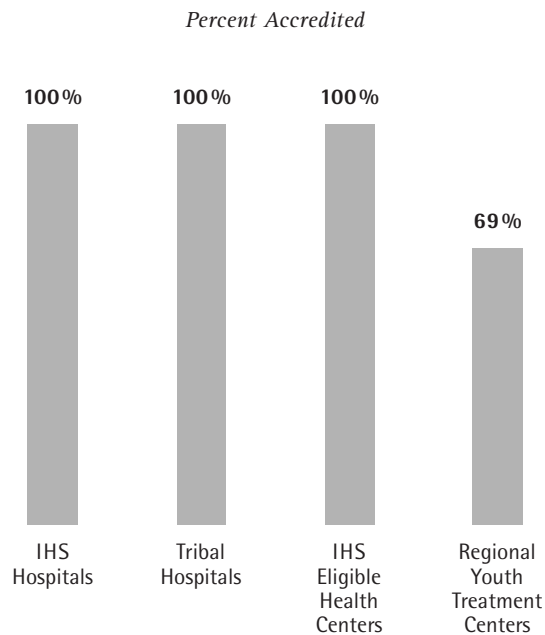
<sup>4</sup> Constant 1998 dollars based on consumer price index for medical care, 1990-98, and 1999 budget inflation factor of 3.9 percent.

**Part 1 Indian Health Service Structure**

**Chart 1.7**

*Accreditation Status of Selected Health Facilities, January 1, 1999*

As of January 20, 1999, all hospitals and eligible health centers were accredited by the Joint Commission on Accreditation of Healthcare Organizations. Since 1990, 9 of 13 Regional Youth Treatment Centers have become accredited, and the remaining 4 are preparing for accreditation.



**Table 1.7**

*Accreditation Status of Hospitals, Health Centers, and Regional Youth Treatment Centers, January 1, 1999*

Type of Facility	Total	Accredited <sup>1</sup>	Not Accredited	Percent Accredited
IHS Hospitals	37	37	0	100
Tribal Hospitals	12	12	0	100
IHS Eligible Health Centers	57 <sup>2</sup>	57	0	100
Regional Youth Treatment Centers <sup>3</sup>	13	9 <sup>4</sup>	4	69

<sup>1</sup> Accredited by the Joint Commission on the Accreditation of Healthcare Organizations (JCAHO).  
<sup>2</sup> Excludes health centers not eligible for accreditation survey and those under Tribal management pursuant to P.L. 93-638.  
<sup>3</sup> Provide alcohol and substance abuse treatment.  
<sup>4</sup> Accreditation of these facilities is a combination of JCAHO and the Commission on Accreditation of Rehabilitation Facilities (CARF).

Part 1 Indian Health Service Structure

Chart 1.8

Accreditation Status of Indian Health Service Laboratories

Ninety-six percent of health center laboratories and 100 percent of hospital laboratories operated by the Indian Health Service were accredited as of January 1, 1999.

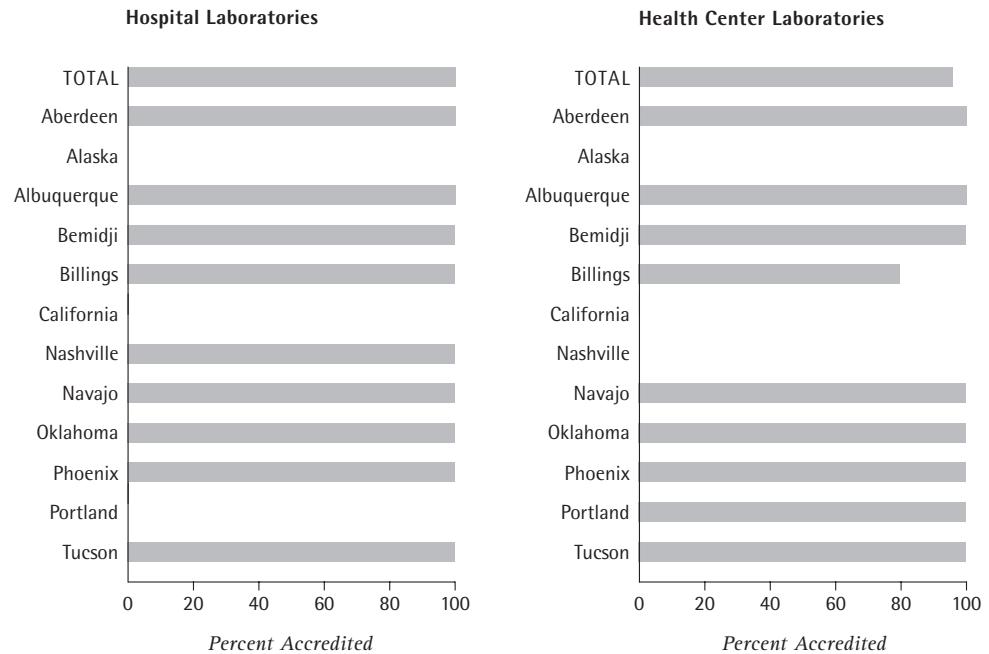


Table 1.8

Indian Health Service Laboratory Accreditation Status, January 1, 1999

Area	IHS Hospital Laboratories					IHS Health Center Laboratories				
	Total	Accredited <sup>1</sup>	Not Accredited	Percent Accredited	Percent in Proficiency Testing Program <sup>2</sup>	Total	Accredited <sup>1</sup>	Not Accredited	Percent Accredited	Percent in Proficiency Testing Program <sup>2</sup>
All Areas	35	35	0	100	100	48	46	2	96	100
Aberdeen	8	8	0	100	100	5	5	0	100	100
Alaska	—	—	—	—	—	—	—	—	—	—
Albuquerque	5	5	0	100	100	5	5	0	100	100
Bemidji	2	2	0	100	100	1	1	0	100	100
Billings	2	2	0	100	100	10	8	2 <sup>3</sup>	80	100
California	—	—	—	—	—	—	—	—	—	—
Nashville	1	1	0	100	100	—	—	—	—	—
Navajo	6	6	0	100	100	5	5	0	100	100
Oklahoma	4	4	0	100	100	11	11	0	100	100
Phoenix	6	6	0	100	100	3	3	0	100	100
Portland	—	—	—	—	—	7	7	0	100	100
Tucson	1	1	0	100	100	1	1	0	100	100

<sup>1</sup> Laboratories hold a certificate of accreditation from the College of American Pathologists, the Joint Commission on the Accreditation of Healthcare Organizations, or the Commission on Laboratory Accreditation as mandated under the Clinical Laboratory Improvement Amendments (CLIA) of 1988. Excludes laboratories under Tribal management pursuant to P.L. 93-638.

<sup>2</sup> Laboratories participating in a CLIA approved proficiency testing program.

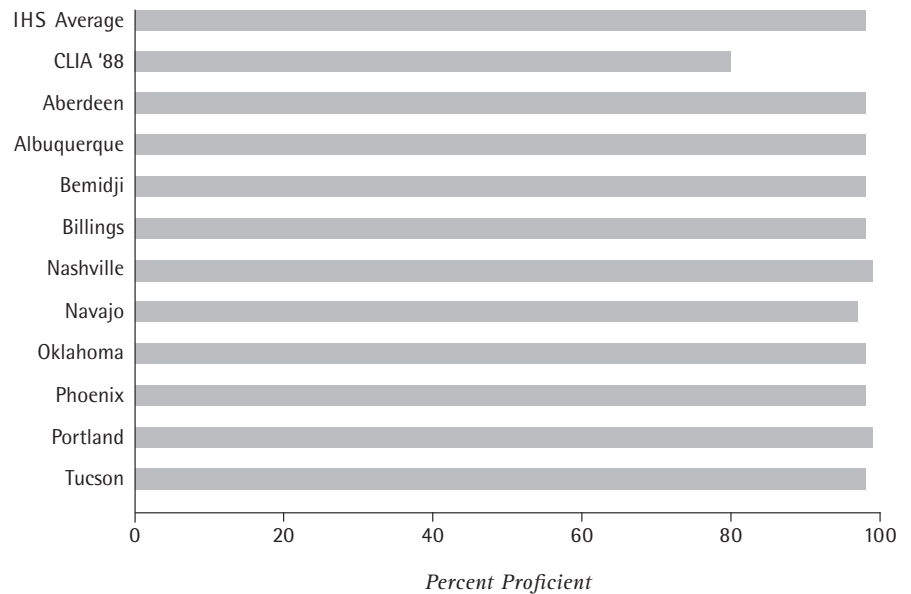
<sup>3</sup> Recently constructed facilities awaiting accreditation.

**Part 1** *Indian Health Service Structure*

**Chart 1.9**

*Proficiency Rating for Indian Health Service Laboratory Services, 1998*

IHS proficiency testing rating exceeded the requirements of the Clinical Laboratory Improvement Amendments of 1988 (CLIA '88) for all private and public sector laboratories. Overall proficiency rating for IHS laboratories is 98 percent. CLIA '88 requires 80 percent proficiency on all regulated analytes.



**Table 1.9**

*Proficiency Rating for Indian Health Service Laboratory Services, 1998*

Area	Percent Proficient
IHS Average	98
CLIA 1988 <sup>1</sup>	80
Aberdeen	98
Albuquerque	98
Bemidji	98
Billings	98
Nashville	99
Navajo	97
Oklahoma	98
Phoenix	98
Portland	99
Tucson	98

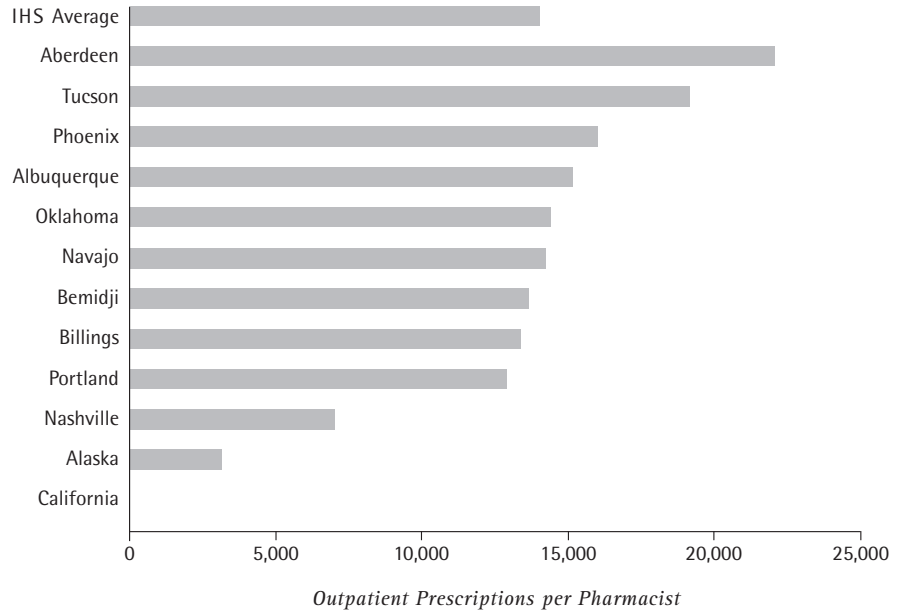
<sup>1</sup> Proficiency level required by Clinical Laboratory Improvement Amendments (CLIA) of 1988.

**Part 1 Indian Health Service Structure**

**Chart 1.10**

*Outpatient Prescriptions Filled per Pharmacist, IHS Direct Facilities, FY 1996*

The average number of outpatient prescriptions filled per pharmacist at Indian Health Service direct facilities in FY 1996 was 14,040. There was a wide variability among the Areas, ranging from 3,184 in Alaska to 22,060 in Aberdeen.



**Table 1.10**

*Outpatient Prescriptions Filled per Pharmacist, Indian Health Service Direct Facilities, FY 1996*

Area	Number of Outpatient Prescriptions Filled	Number of Pharmacists	Prescriptions Filled per Pharmacist
All Areas	5,812,532	414	14,040
Aberdeen	1,058,871	48	22,060
Alaska	133,718	42	3,184
Albuquerque	470,995	31	15,193
Bemidji	204,938	15	13,663
Billings	443,296	33	13,433
California	-	1	-
Nashville	77,245	11	7,022
Navajo	1,082,624	76	14,245
Oklahoma	1,025,704	71	14,447
Phoenix	785,976	49	16,040
Portland	375,628	29	12,953
Tucson	153,537	8	19,192

*Tribal direct facilities are excluded because the reporting of the number of prescriptions filled was incomplete.*

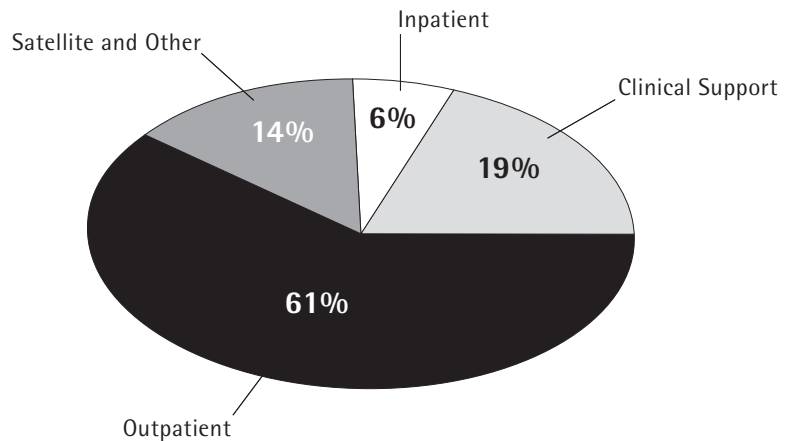


**Part 1 Indian Health Service Structure**

**Chart 1.11**

*Pharmacy Workload by Type of Activity, IHS and Tribal Direct Facilities, FY 1995*

Over 61 percent of pharmacy workload at Indian Health Service and Tribal direct facilities in FY 1995 was associated with outpatient activities, followed by clinical support activities at 19 percent.



**Table 1.11**

*Pharmacy Workload by Type of Activity, Indian Health Service and Tribal Direct Facilities, FY 1995*

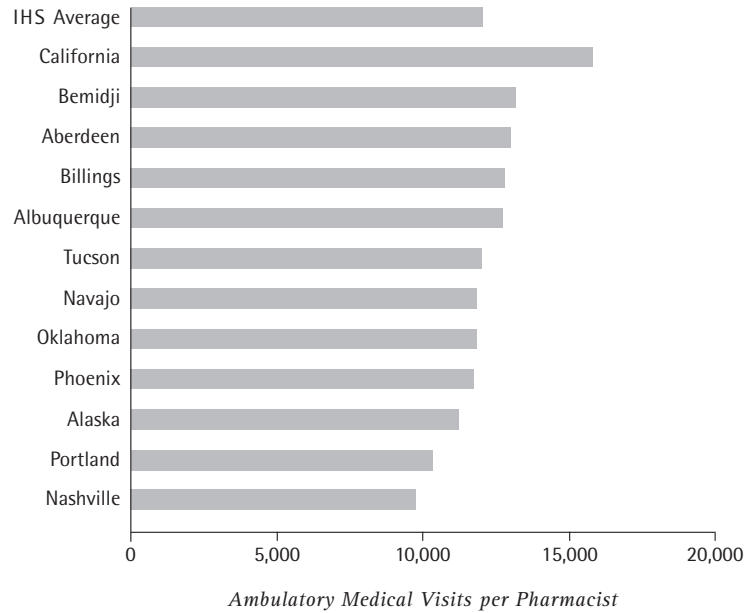
Type of Activity	Workload Units	Percent of Total
Total	96,805,303	100.0
Outpatient	59,435,251	61.4
Clinical Support	18,186,552	18.8
Inpatient	6,213,147	6.4
Satellite	1,218,622	1.3
Other	11,751,731	12.1

**Part 1 Indian Health Service Structure**

**Chart 1.12**

*Ambulatory Medical Visits per Pharmacist, IHS and Tribal Direct Facilities, FY 1996*

The average number of ambulatory medical visits per pharmacist at Indian Health Service and Tribal direct facilities in FY 1996 was 12,036. There was a wide variability among the Areas, ranging from 9,764 in Nashville to 15,767 in California.



**Table 1.12**

*Ambulatory Medical Visits per Pharmacist, Indian Health Service and Tribal Direct Facilities, FY 1996*

Area	Number of Ambulatory Medical Visits	Number of Pharmacists	Visits per Pharmacist
All Areas	6,342,744	527	12,036
Aberdeen	675,307	52	12,987
Alaska	603,767	54	11,181
Albuquerque	406,636	32	12,707
Bemidji	513,406	39	13,164
Billings	447,775	35	12,794
California	315,339	20	15,767
Nashville	205,043	21	9,764
Navajo	898,048	76	11,816
Oklahoma	1,157,019	98	11,806
Phoenix	622,154	53	11,739
Portland	402,280	39	10,315
Tucson	95,970	8	11,996