



RESOURCE AND PATIENT MANAGEMENT SYSTEM

IHS Emergency Department Dashboard

(BEDD)

Addendum to the Installation Guide and Release Notes

Version 2.0 Patch 3
November 2018

Office of Information Technology
Division of Information Technology

Table of Contents

1.0	Release Notes	1
2.0	Installation Notes	2
2.1	Contents of Distribution	2
2.2	Required Resources	2
2.3	Before You Begin: Installation Issues	3
3.0	Installation Instructions	4
3.1	Disk Space	4
3.2	Pre-installation	4
4.0	Sample Installations	5
4.1	BEDD XML/Ensemble Installation	5
4.1.1	Move XML Compressed File to Accessible Folder and Unzip	5
4.1.2	Open Ensemble Studio.....	5
4.1.3	Import the bedd0200.03.xml File	7
4.2	BEDD KIDS Installation	9
4.3	Sample Cache Installation	10
5.0	Application Access Setup	17
	Acronym List	18
	Contact Information	19

Preface

The purpose of this manual is to provide the user with the information required to install v2.0 p3 of the Indian Health Service (IHS) Emergency Department Dashboard (EDD).

1.0 Release Notes

The EDD is a tool that electronically enables facilities to run and manage their emergency and or urgent care clinics. The EDD is dependent on the Resource and Patient Management System (RPMS) Emergency Room System (ERS) in the AMER namespace. EDD was built on the ERS foundation to enhance patient flow and provider communication.

EDD can be set up to operate as a standalone icon on the staff computer or can be accessed from within the RPMS Electronic Health Record (EHR) application.

EDD gets its data and updates from one of four ways: ERS, Dashboard Edit, or EHR data or a combination of all three.

2.0 Installation Notes

Prefix: BEDD

Current Version: 2.0 p3

2.1 Contents of Distribution

The BEDD v2.0 p3 distribution contains the items documented in Table 2-1.

Table 2-1: Contents of distribution

File	Description
bedd0200.03xml.zip (containing bedd0200.03.xml)	Ensemble XML import file
bedd0200.03k	KIDS file
bedd0200.03i.pdf	Addendum to the Installation Guide and Release Notes (this document)
bedd0200.03n	Patch notes

2.2 Required Resources

Table 2-2 contains the RPMS software that is required for the BEDD software to run properly. The BEDD v2.0 p3 KIDS has checks in place to require AMER v3.0 p10 and BEDD v2.0 p 2. All other required modules were required as steps in previous BEDD/AMER version/patch installations, so checks for them are not required for this release.

Table 2-2: Required RPMS Software

Module	Minimum Version
Veterans Administration (VA) FileMan (DI)	v22.0 p1003
VA Kernel (XU)	v8.0 p1015
IHS/VA Utilities (XB)	v3.0 through p11
ER Visit System (AMER)	V3.0 p10
IHS EMERGENCY DEPT DASHBOARD (BEDD)	V2.0 p2
Patient Care Component PCC Data Entry (APCD)	v2.0 through p10
IHS PCC Suite (BJPC)	v2.0 p11
EHR 1.1	v1.1 p14
Lexicon Utility (LEX)	v2.0 p1003
Ensemble	v2012.2.5
VUECENTRIC FRAMEWORK (CIAV)	V1.1v2

2.3 Before You Begin: Installation Issues

The Ensemble import file (bedd0200.03.xml) is delivered in a zipped (compressed) format. It has been determined that transferring the file in an uncompressed format will corrupt it so that it will not import properly into Ensemble. Therefore, when retrieving the file, do not extract the file from its zipped state until it has been placed directly into the desired import folder.

3.0 Installation Instructions

The process to install v2.0 p3 of the BEDD application requires the installation of two builds. The first build that needs to be installed is an XML release that needs to be imported into Ensemble first. Following the XML installation will be a standard KIDS build installation.

3.1 Disk Space

With v2.0 p3 of BEDD, no significant extra disk space is needed on the server to install the Cache Server Page (CSP) file contained in the bedd0200.03.xml file. Additional storage space will be needed to store patient information entered through the EDD.

3.2 Pre-installation

Before installing the BEDD application, the following items should be completed (in no particular order):

- If possible, initially load the software into a test account, then into the production account.
- Refer to the sample installation instructions for the applicable prompts and user responses. User responses appear in bold type.
- Ensure the other required applications have been installed.

4.0 Sample Installations

There are two builds to be installed with this release, an XML build and a KIDS build. For the installation to complete successfully, the KIDS build must be installed after the XML build. A post-install step in the KIDS build compiles information delivered in the XML build so it must be installed second. If the KIDS build inadvertently is installed first, continue installing the XML build then install the KIDS build a second time.

4.1 BEDD XML/Ensemble Installation

This section begins the BEDD installation process. It describes the process of importing the BEDD application into Ensemble Studio from an XML file.

4.1.1 Move XML Compressed File to Accessible Folder and Unzip

Move the compressed XML build to a folder accessible by the Ensemble server. Once the file has been placed into the folder, unzip the file.

4.1.2 Open Ensemble Studio

1. Click the **Ensemble** icon in the system tray (at the right end of the Windows Taskbar) and select **Studio**, as shown in Figure 4-1. A logon ID and password may be required.

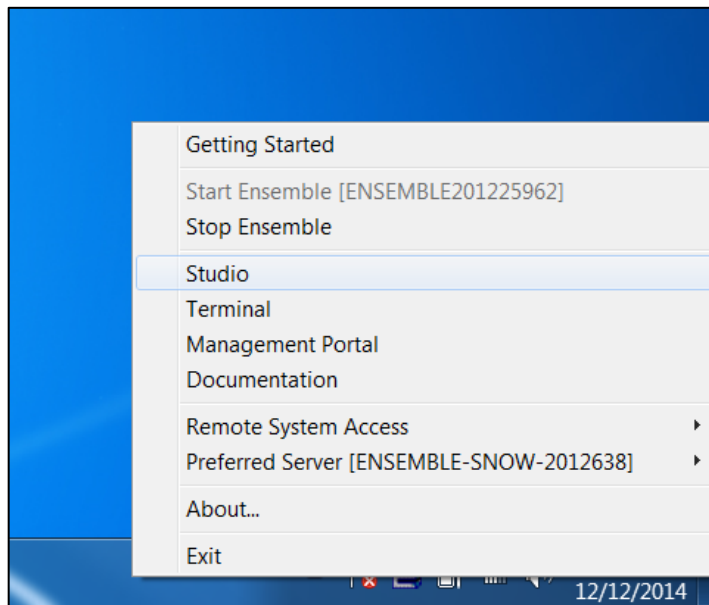


Figure 4-1: Open Ensemble Studio

2. The Ensemble Studio window displays, as shown in Figure 4-2.

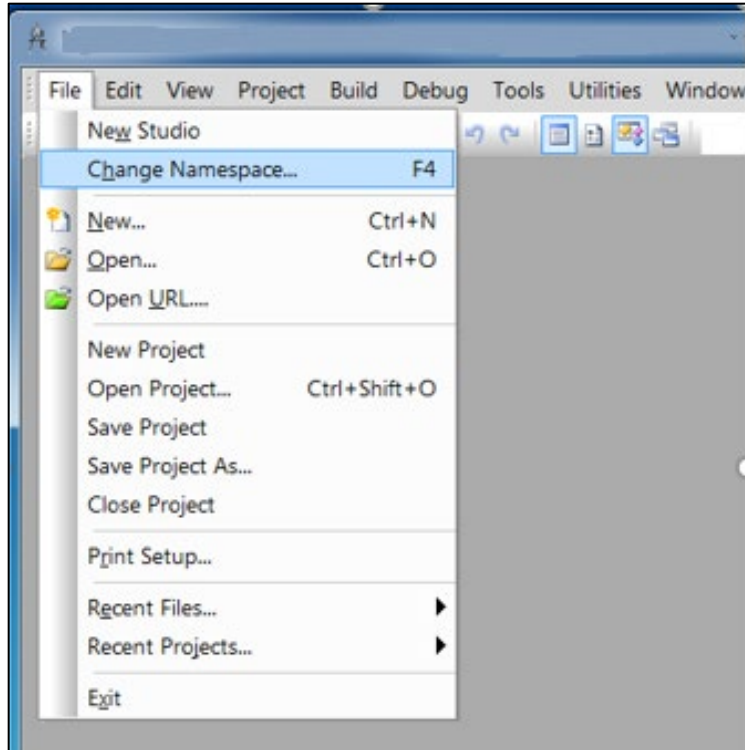


Figure 4-2: Ensemble Studio with option to change namespace

3. On the **File** menu, click **Change Namespace** to open the **Cache Connection Manager** dialog (Figure 4-3).

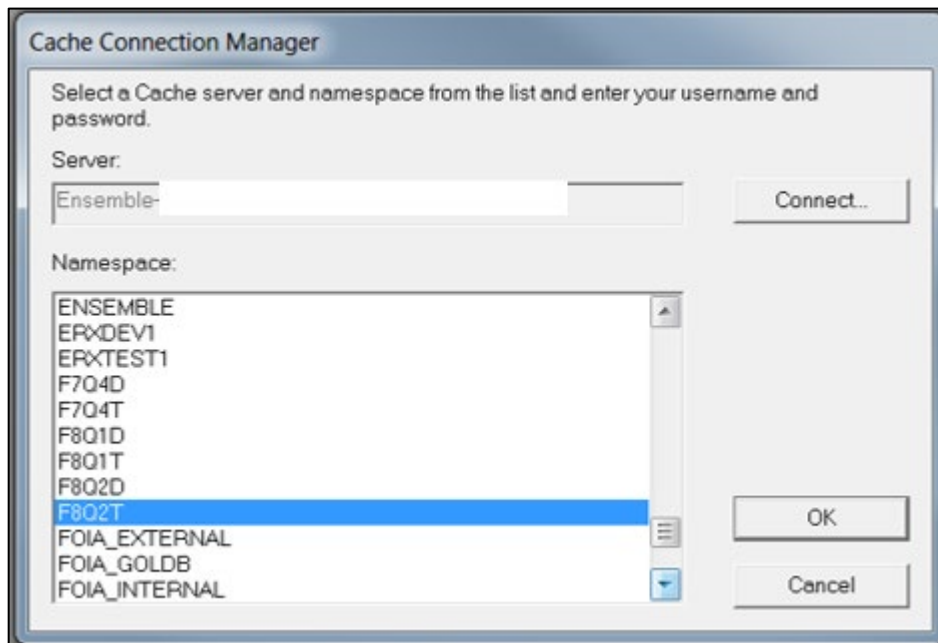


Figure 4-3: Select the appropriate namespace to import to

4. Select the appropriate **Namespace** from the **Cache Connection Manager** dialog (Figure 4-3) and click **OK**.

4.1.3 Import the bedd0200.03.xml File

1. On the **Tools** menu (Figure 4-4), select **Import Local**.

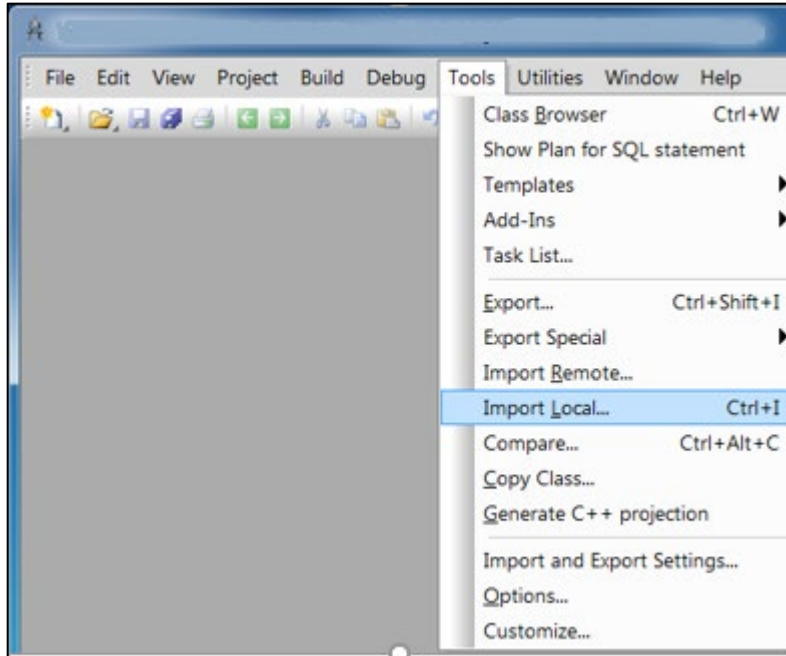


Figure 4-4: Accessing the Import Local menu option

2. Navigate to the folder where the file is placed and select **bedd0200.03.xml**.

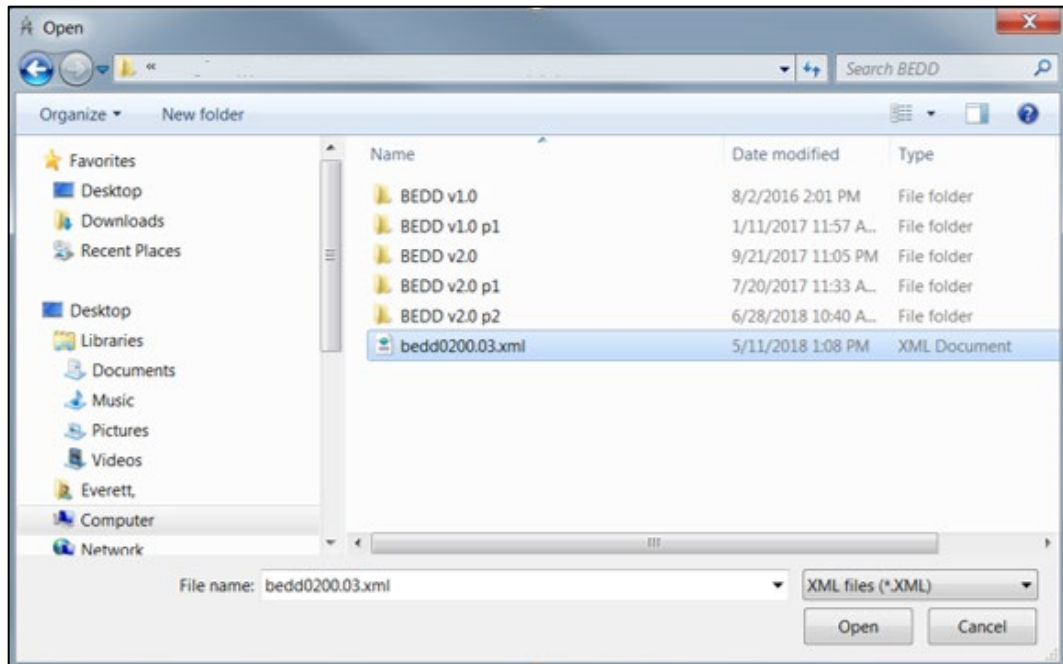


Figure 4-5: Select the XML build to import

3. Click **Open** (Figure 4-5). The **Import** dialog (Figure 4-6) displays.

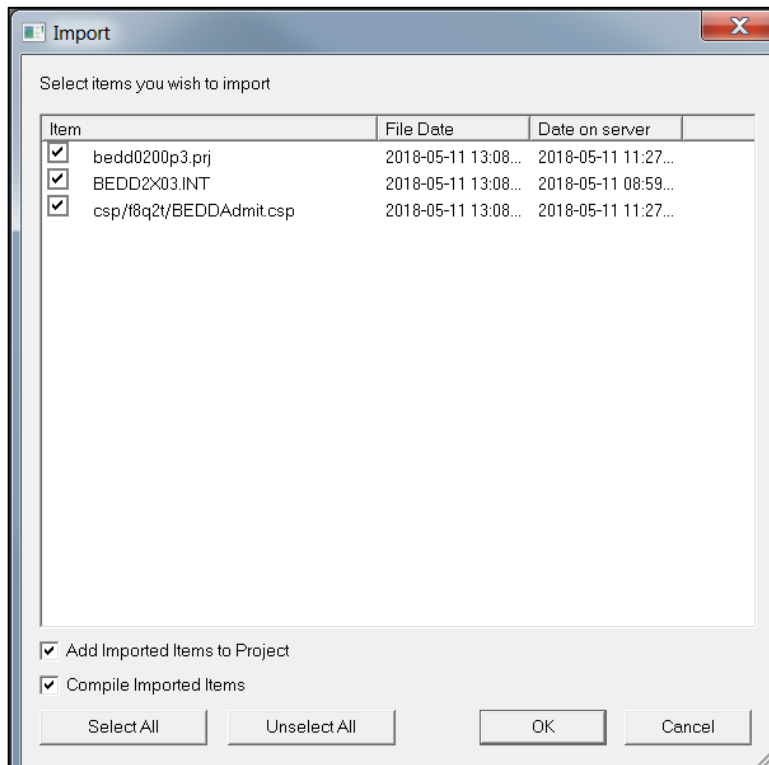


Figure 4-6: Import dialog display

4. Select all of the items in the list and select the **Compile Imported Items** check box.
5. Click **OK**. After the system compiles the EDD package files, the **Compilation finished successfully in...** message displays in the **Output** pane.
6. If a warning dialog similar to Figure 4-7 displays after the XML file has been imported, click **OK** to continue.

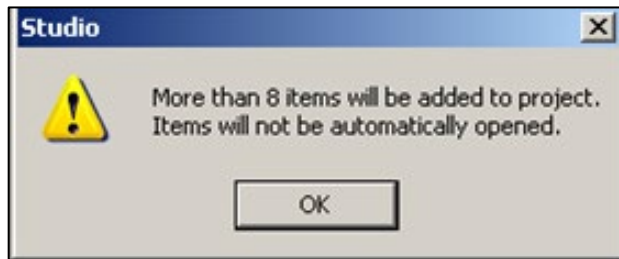


Figure 4-7: Studio warning dialog

4.2 BEDD KIDS Installation

1. From the **KIDS** menu, select the **Installation** menu.
2. From the **XPD Main > Installation** menu, select **Option 1: Load a Distribution**.
3. Type **bedd0200.03k** at the “Enter a Host File” prompt. Please note the file path might need to precede the file name with the appropriate host path. This is the file to retrieve from the appropriate software directory.
4. Type **Yes** (or press Enter to accept the default) at the “Want to Continue with Load?” prompt.
5. KIDS file **bedd0200.03k** contains the following installation file:

BEDD*2.0*3

6. From the **Installation** menu, select **Option 2: Verify Checksums in Transport Global**. This option provides a mechanism for ensuring the integrity of the routines. This step verifies checksums for the components of the Transport global and reports any errors uncovered.
7. Type **BEDD*2.0*3** as the install name.

Optional: Exercise one of the following installation options. In this case, use **BEDD*2.0*3** as the install name.

- **Back Up a Transport Global:** This option creates a MailMan message that will back up all current routines on the system that would be replaced by this release.

- **Compare Transport Global:** This option displays all changes that will result from the installation of this patch and compares them with the values currently loaded on the system (routines, data dictionaries, templates, etc.).
8. From the **Installation** menu, select the **Install Packages(s)** option.
 9. At the “Select Install Name” prompt, type **BEDD*2.0*3**.
 10. Respond to the following prompts as indicated:
 - a. At the “Want KIDS to Rebuild Menu Trees Upon Completion of Install?” prompt, type **No**.
 - b. At the “Want KIDS to INHIBIT LOGONs during the install?” prompt, type **No**.
 - c. At the “Want to DISABLE Scheduled Options, Menu Options and Protocols?” prompt, type **No**.
 11. Type the name of the device that will print the install messages.
 12. Exit the **Installation** menu.

4.3 Sample Cache Installation

Note: User responses appear in bold type.

```
Select OPTION NAME: XPD MAIN           Kernel Installation & Distribution System

Edits and Distribution ...
Utilities ...
Installation ...
Patch Monitor Main Menu ...

Select Kernel Installation & Distribution System <TEST ACCOUNT> Option: Installation

1      Load a Distribution
2      Verify Checksums in Transport Global
3      Print Transport Global
4      Compare Transport Global to Current System
5      Backup a Transport Global
6      Install Package(s)
       Restart Install of Package(s)
       Unload a Distribution

Select Installation <TEST ACCOUNT> Option: 1 Load a Distribution
Enter a Host File: C:\RPMS\bedd0200.03k

KIDS Distribution saved on May 18, 2018@08:29:22
Comment: BEDD*2.0*3

This Distribution contains Transport Globals for the following Package(s):
  BEDD*2.0*3
Distribution OK!

Want to Continue with Load? YES//
```

```

Loading Distribution...

Build BEDD*2.0*3 has an Environmental Check Routine
Want to RUN the Environment Check Routine? YES//
  BEDD*2.0*3
Will first run the Environment Check Routine, BEDD2P03

Use INSTALL NAME: BEDD*2.0*3 to install this Distribution.

  1      Load a Distribution
  2      Verify Checksums in Transport Global
  3      Print Transport Global
  4      Compare Transport Global to Current System
  5      Backup a Transport Global
  6      Install Package(s)
          Restart Install of Package(s)
          Unload a Distribution

Select Installation <TEST ACCOUNT> Option: 2  Verify Checksums in Transport GlobAl
Select INSTALL NAME:      BEDD*2.0*3      Loaded from Distribution      5/18/18@08:30
:20
=> BEDD*2.0*3 ;Created on May 18, 2018@08:29:22

This Distribution was loaded on May 18, 2018@08:30:20 with header of
BEDD*2.0*3 ;Created on May 18, 2018@08:29:22
It consisted of the following Install(s):
  BEDD*2.0*3

Want each Routine Listed with Checksums: Yes//   YES
DEVICE: HOME//   VIRTUAL

PACKAGE: BEDD*2.0*3      May 18, 2018 8:30 am      PAGE 1
-----

BEDD2P03  Calculated      3136216
BEDDADM   Calculated      110306153
BEDDPCC   Calculated      6940603
BEDDUTID  Calculated      205548429

  4 Routines checked, 0 failed.

  1      Load a Distribution
  2      Verify Checksums in Transport Global
  3      Print Transport Global
  4      Compare Transport Global to Current System
  5      Backup a Transport Global
  6      Install Package(s)
          Restart Install of Package(s)
          Unload a Distribution

Select Installation <TEST ACCOUNT> Option: 6  Install Package(s)
Select INSTALL NAME:      BEDD*2.0*3      Loaded from Distribution      5/18/18@08:30
:20
=> BEDD*2.0*3 ;Created on May 18, 2018@08:29:22

This Distribution was loaded on May 18, 2018@08:30:20 with header of
BEDD*2.0*3 ;Created on May 18, 2018@08:29:22
It consisted of the following Install(s):
  BEDD*2.0*3
Checking Install for Package BEDD*2.0*3
Will first run the Environment Check Routine, BEDD2P03

```

```
Install Questions for BEDD*2.0*3

Want KIDS to INHIBIT LOGONS during the install? NO//
Want to DISABLE Scheduled Options, Menu Options, and Protocols? NO//

Enter the Device you want to print the Install messages.
You can queue the install by enter a 'Q' at the device prompt.
Enter a '^' to abort the install.

DEVICE: HOME//    VIRTUAL

  Install Started for BEDD*2.0*3 :
      May 18, 2018@08:30:27

Build Distribution Date: May 18, 2018

  Installing Routines:.....
      May 18, 2018@08:30:27

  Running Post-Install Routine: ENT^BEDD2P03.
Compilation started on 05/18/2018 08:30:27 with qualifiers 'k-u'
Compiling routine : BEDD2XML.INT
Compiling routine : BEDDRPT.INT
Compiling routine : BEDDUTIS.INT
Compiling routine : BEDDUTW.INT, compiling 18 classes
Compiling class BEDD.EDConsults
Compiling class BEDD.EDDiagnosis
Compiling class BEDD.EDInjury
Compiling class BEDD.EDProc
Compiling class BEDD.EDRoomUse
Compiling class BEDD.EDRooms
Compiling class BEDD.EDSYSTEM
Compiling class BEDD.EDUserPreferences
Compiling class BEDD.EDWarning
Compiling class BEDDAPPL.EDMenu
Compiling class BEDDAPPL.EDRoomModel
Compiling class BEDDAPPL.EDSystemModel
Compiling class BEDDAPPL.EDWarningModel
Compiling class BEDD.EDVISIT
Compiling table BEDD.EDConsults
Compiling table BEDD.EDDiagnosis
Compiling table BEDD.EDProc
Compiling table BEDD.EDRoomUse
Compiling table BEDD.EDRooms
Compiling table BEDD.EDSYSTEM
Compiling table BEDD.EDUserPreferences
Compiling table BEDD.EDVISIT
Compiling table BEDD.EDWarning
Compiling routine BEDD.EDConsults.1
Compiling routine BEDD.EDDiagnosis.1
Compiling routine BEDD.EDInjury.1
Compiling routine BEDD.EDProc.1
Compiling routine BEDD.EDRoomUse.1
Compiling routine BEDD.EDRooms.1
Compiling routine BEDD.EDSYSTEM.1
Compiling routine BEDD.EDUserPreferences.1
Compiling routine BEDD.EDWarning.1
Compiling routine BEDDAPPL.EDMenu.1
Compiling routine BEDDAPPL.EDRoomModel.1
Compiling routine BEDDAPPL.EDSystemModel.1
```

```
Compiling routine BEDDAPPL.EDWarningModel.1
Compiling routine BEDD.EDVISIT.1
Generating file: D:\intersystems\E3IHS\CSP\f8q2t\BEDDAPPL.js
Generating file: D:\intersystems\E3IHS\CSP\f8q2t\BEDDAPPL.css
Generating file: D:\intersystems\E3IHS\CSP\f8q2t\BEDDAPPL_3.css
Compiling class BEDDAPPL.EDManager
Compiling class BEDDAPPL.EDRoom
Compiling class BEDDAPPL.EDSystem
Compiling class BEDDAPPL.EDWarning
Compiling routine BEDDAPPL.EDManager.1
Compiling routine BEDDAPPL.EDRoom.1
Compiling routine BEDDAPPL.EDSystem.1
Compiling routine BEDDAPPL.EDWarning.1
Compiling file /csp/f8q2t/BEDD.csp
Compiling file /csp/f8q2t/BEDDASRPT.csp
Compiling file /csp/f8q2t/BEDDCITMRPT.csp
Compiling file /csp/f8q2t/BEDDCLOGRPT.csp
Compiling file /csp/f8q2t/BEDDCONS.csp
Compiling file /csp/f8q2t/BEDDDC.csp
Compiling file /csp/f8q2t/BEDDDCTMRPT.csp
Compiling file /csp/f8q2t/BEDDDIAG.csp
Compiling file /csp/f8q2t/BEDDEDC.csp
Compiling file /csp/f8q2t/BEDDEDCV.csp
Compiling file /csp/f8q2t/BEDDEDIT1.csp
Compiling file /csp/f8q2t/BEDDIL.csp
Compiling file /csp/f8q2t/BEDDINJ.csp
Compiling file /csp/f8q2t/BEDDLCKIT.csp
Compiling file /csp/f8q2t/BEDDLCKREL.csp
Compiling file /csp/f8q2t/BEDDLOS RPT.csp
Compiling file /csp/f8q2t/BEDDLogin.csp
Compiling file /csp/f8q2t/BEDDLogin1.csp
Compiling file /csp/f8q2t/BEDDPROC.csp
Compiling file /csp/f8q2t/BEDDRMTMRPT.csp
Compiling file /csp/f8q2t/BEDDRPTMNU.csp
Compiling file /csp/f8q2t/BEDDTRG.csp
Compiling file /csp/f8q2t/BEDDUA.csp
Compiling file /csp/f8q2t/BEDDUNLOCK.csp, compiling 24 classes
Compiling class csp.bedd
Compiling class csp.beddasrpt
Compiling class csp.beddcitmrpt
Compiling class csp.beddclogrpt
Compiling class csp.beddcons
Compiling class csp.bedddc
Compiling class csp.bedddctmrpt
Compiling class csp.bedddiag
Compiling class csp.beddedc
Compiling class csp.beddedcv
Compiling class csp.beddedit1
Compiling class csp.beddil
Compiling class csp.beddinj
Compiling class csp.beddlckit
Compiling class csp.beddlckrel
Compiling class csp.beddlogin
Compiling class csp.beddlogin1
Compiling class csp.beddlosrpt
Compiling class csp.beddproc
Compiling class csp.beddrmtmrpt
Compiling class csp.beddrptmnu
Compiling class csp.beddtrg
Compiling class csp.beddua
Compiling class csp.beddunlock
```



```
Compiling routine csp.bedd.1
Compiling routine csp.beddasrpt.1
Compiling routine csp.beddcitrpt.1
Compiling routine csp.beddclogrpt.1
Compiling routine csp.beddcons.1
Compiling routine csp.bedddc.1
Compiling routine csp.bedddctmrpt.1
Compiling routine csp.bedddiag.1
Compiling routine csp.beddedc.1
Compiling routine csp.beddedcv.1
Compiling routine csp.beddedit1.1
Compiling routine csp.beddil.1
Compiling routine csp.beddinj.1
Compiling routine csp.beddlckit.1
Compiling routine csp.beddlckrel.1
Compiling routine csp.beddlogin.1
Compiling routine csp.beddlogin1.1
Compiling routine csp.beddlosrpt.1
Compiling routine csp.beddproc.1
Compiling routine csp.beddrmtmrpt.1
Compiling routine csp.beddrptmnu.1
Compiling routine csp.beddtrg.1
Compiling routine csp.beddua.1
Compiling routine csp.beddunlock.1
Compilation finished successfully in 8.990s.

Compilation started on 05/18/2018 08:30:36 with qualifiers 'k-u'
Compiling routine : BEDD2X01.INT
Compiling routine : BEDDPREF.INT
Compiling routine : BEDDUTIS.INT
Compiling routine : BEDDUTW.INT
Compiling routine : BEDDUTW1.INT, compiling 6 classes
Compiling class BEDD.EDSYSTEM
Compiling class BEDD.EDUserPreferences
Compiling class BEDD.EDVISIT
Compiling class BEDDAPPL.EDMenu
Compiling class BEDDAPPL.EDSystemModel
Compiling table BEDD.EDSYSTEM
Compiling table BEDD.EDUserPreferences
Compiling table BEDD.EDVISIT
Compiling routine BEDD.EDSYSTEM.1
Compiling routine BEDD.EDUserPreferences.1
Compiling routine BEDD.EDVISIT.1
Compiling routine BEDDAPPL.EDMenu.1
Compiling routine BEDDAPPL.EDSystemModel.1
Generating file: D:\intersystems\E3IHS\CSP\f8q2t\BEDDAPPL.js
Generating file: D:\intersystems\E3IHS\CSP\f8q2t\BEDDAPPL.css
Generating file: D:\intersystems\E3IHS\CSP\f8q2t\BEDDAPPL_3.css
Compiling class BEDDAPPL.EDSystem
Compiling routine BEDDAPPL.EDSystem.1
Compiling file /csp/f8q2t/BEDD.csp
Compiling file /csp/f8q2t/BEDDEDIT1.csp
Compiling file /csp/f8q2t/BEDDLCKIT.csp
Compiling file /csp/f8q2t/BEDDLCKREL.csp
Compiling file /csp/f8q2t/BEDDLogin1.csp
Compiling file /csp/f8q2t/BEDDPROC.csp, compiling 6 classes
Compiling class csp.bedd
Compiling class csp.beddedit1
Compiling class csp.beddlckit
Compiling class csp.beddlckrel
Compiling class csp.beddlogin1
```

```
Compiling class csp.beddproc
Compiling routine csp.bedd.1
Compiling routine csp.beddedit1.1
Compiling routine csp.beddlckit.1
Compiling routine csp.beddlckrel.1
Compiling routine csp.beddlogin1.1
Compiling routine csp.beddproc.1
Compilation finished successfully in 3.706s.

Compilation started on 05/18/2018 08:30:39 with qualifiers 'k-u'
Compiling routine : BEDD2X02.INT
Compiling routine : BEDDRPT.INT
Compiling routine : BEDDUTW.INT
Compiling routine : BEDDUTW1.INT, compiling 6 classes
Compiling class BEDD.EDSYSTEM
Compiling class BEDDAPPL.EDMenu
Compiling class BEDDAPPL.EDSystemModel
Compiling table BEDD.EDSYSTEM
Compiling routine BEDD.EDSYSTEM.1
Compiling routine BEDDAPPL.EDMenu.1
Compiling routine BEDDAPPL.EDSystemModel.1
Generating file: D:\intersystems\E3IHS\CSP\f8q2t\BEDDAPPL.js
Generating file: D:\intersystems\E3IHS\CSP\f8q2t\BEDDAPPL.css
Generating file: D:\intersystems\E3IHS\CSP\f8q2t\BEDDAPPL_3.css
Compiling class BEDDAPPL.EDRoom
Compiling class BEDDAPPL.EDSystem
Compiling class BEDDAPPL.EDWarning
Compiling routine BEDDAPPL.EDRoom.1
Compiling routine BEDDAPPL.EDSystem.1
Compiling routine BEDDAPPL.EDWarning.1
Compiling file /csp/f8q2t/BEDD.csp
Compiling file /csp/f8q2t/BEDDAdmit.csp
Compiling file /csp/f8q2t/BEDDCLOGRPT.csp
Compiling file /csp/f8q2t/BEDDCONS.csp
Compiling file /csp/f8q2t/BEDDDC.csp
Compiling file /csp/f8q2t/BEDDDIAG.csp
Compiling file /csp/f8q2t/BEDDEDC.csp
Compiling file /csp/f8q2t/BEDDEDCV.csp
Compiling file /csp/f8q2t/BEDDEDIT1.csp
Compiling file /csp/f8q2t/BEDDINJ.csp
Compiling file /csp/f8q2t/BEDDLCKIT.csp
Compiling file /csp/f8q2t/BEDDLCKREL.csp
Compiling file /csp/f8q2t/BEDDLogin.csp
Compiling file /csp/f8q2t/BEDDLogin1.csp
Compiling file /csp/f8q2t/BEDDPROC.csp
Compiling file /csp/f8q2t/BEDDRPTMNU.csp, compiling 16 classes
Compiling class csp.bedd
Compiling class csp.beddadmit
Compiling class csp.beddclogrpt
Compiling class csp.beddcons
Compiling class csp.bedddc
Compiling class csp.bedddiag
Compiling class csp.beddedc
Compiling class csp.beddedcv
Compiling class csp.beddedit1
Compiling class csp.beddinj
Compiling class csp.beddlckit
Compiling class csp.beddlckrel
Compiling class csp.beddlogin
Compiling class csp.beddlogin1
Compiling class csp.beddproc
```

```
Compiling class csp.bedrptmnu
Compiling routine csp.bedd.1
Compiling routine csp.beddadmit.1
Compiling routine csp.beddclogrpt.1
Compiling routine csp.beddcons.1
Compiling routine csp.bedddc.1
Compiling routine csp.bedddiag.1
Compiling routine csp.beddedc.1
Compiling routine csp.beddedcv.1
Compiling routine csp.beddedit1.1
Compiling routine csp.beddinj.1
Compiling routine csp.beddlckit.1
Compiling routine csp.beddlckrel.1
Compiling routine csp.beddlogin.1
Compiling routine csp.beddlogin1.1
Compiling routine csp.beddproc.1
Compiling routine csp.bedrptmnu.1
Compilation finished successfully in 4.795s.

Compilation started on 05/18/2018 08:30:44 with qualifiers 'k-u'
Compiling routine : BEDD2X03.INT
Compiling file /csp/f8q2t/BEDDAdmit.csp
Compiling class csp.beddadmit
Compiling routine csp.beddadmit.1
Compilation finished successfully in 0.357s.

Compilation started on 05/18/2018 08:30:45 with qualifiers 'k-u'
Compilation finished successfully in 0.004s.

Updating Routine file.....

Updating KIDS files.....

BEDD*2.0*3 Installed.
      May 18, 2018@08:30:45

Not a VA primary domain

NO Install Message sent

Install Completed
```

5.0 Application Access Setup

BEDD v2.0 p3 does not require any changes to the application setup or BEDD specific settings. Please refer to previous BEDD releases for information regarding setting up the ED Dashboard for first-time use or editing existing settings.

BEDD v2.0 p3 does take advantage of new AMER settings delivered in AMER v3.0 p10. Please see the AMER p10 Release Notes for directions on using these new settings.

Acronym List

Acronym	Meaning
CSP	Cache Server Page
EDD	Emergency Department Dashboard
EHR	Electronic Health Record
ERS	Emergency Room System
GUI	Graphical User Interface
IHS	Indian Health Service
IIS	Internet Information Services
KIDS	Kernel Installation and Distribution System
RPMS	Resource and Patient Management System
SSL	Secure Sockets Layer
VA	Veterans Administration
XML	Extensible Markup Language

Contact Information

If you have any questions or comments regarding this distribution, please contact the OIT Help Desk (IHS).

Phone: (888) 830-7280 (toll free)

Web: <http://www.ihs.gov/helpdesk/>

Email: support@ihs.gov