



RESOURCE AND PATIENT MANAGEMENT SYSTEM

CIA Generic Retrieval Utility

(GRU)

Installation Guide and Release Notes

Version 1.4
February 2012

Office of Information Technology (OIT)
Division of Information Resource Management
Albuquerque, New Mexico

Table of Contents

1.0	Release Notes	1
2.0	Installation Notes	2
2.1	General Information	2
2.2	Contents of Distribution	2
2.3	Required Resources	2
2.3.1	RPMS Minimum Server Requirements	2
2.3.2	Client PC Requirements	2
2.4	Before You Begin: Installation Issues	3
3.0	Installation Instructions	4
4.0	Sample Installations	5
4.1	Sample Client GRU Installation	5
4.2	Sample RPMS GRU Installation	9
5.0	Installation Configuration	13
	Acronym List	18
	Contact Information	19

Preface

This manual contains the installation guide for the Generic Retrieval Utility (GRU) v1.4 package. Included are installation instructions and a sample installation session.

Rules of Behavior

All Resource and Patient Management System (RPMS) users are required to observe Indian Health Services (IHS) Rules of Behavior regarding patient privacy and the security of both patient information and IHS computers and networks.

Warning: GRU is intended for use with the certified EHR to monitor the RPMS Audit Log for monitoring user access to patients and what data was entered or changed. Although other files are searchable, the GRU is not a replacement for standard FileMan searching at this time. Use with caution, and check search results carefully.

1.0 Release Notes

The Generic Retrieval Utility is an extremely powerful tool that permits constructing and executing complex queries against FileMan databases using an intuitive graphical user interface (GUI). Results of queries may be viewed, exported to external applications, or output in a variety of customizable report formats.

2.0 Installation Notes

Prefix: GRU

Current Version: 1.4

Warning: Read entire notes file prior to attempting any installation.

2.1 General Information

- Make a copy of this distribution for offline storage.
- Print all notes/readme files.

2.2 Contents of Distribution

File	Description
gru_0140.zip	
gru_0140.k	
gru_014i.pdf	
gru_014t.pdf	
gru_014u.pdf	

2.3 Required Resources

2.3.1 RPMS Minimum Server Requirements

- Cache version 5.0
- Kernel version 8.0
- RPC Broker version 1.1

2.3.2 Client PC Requirements

- Microsoft Windows 2000 or XP
- Microsoft .NET Framework 2.0 service pack 2 or later
- Microsoft Data Access Components (MDAC) current version

2.4 Before You Begin: Installation Issues

In order to properly install the Generic Retrieval Utility, the installer must have the following:

- Access to the GRU_0140.zip file.
- A temporary directory where the zip files are to be extracted for installation.
- The directory location where GRU is to be installed.
- The IP Address or Hostname of the RPMS server(s) being accessed by GRU.
- The Port # of the RPMS server(s) being accessed by GRU.

3.0 Installation Instructions

The installation file is a zip file named GRU.xxxx, where xxxx is the version and contains:

- Installation executable – **gru_0140.exe**
- KIDS build file – **gru_0140.k**

To install the client portion of the application:

1. Launch the **gru_0140.exe** installer:
 - The **gru_0140.exe** contains the boot strap logic for the Microsoft installer that then uses the content of the **gru.msi** file. **gru.exe** is the Generic Retrieval Utility run file.
 - The **gru.msi** contains the installation content for the Generic Retrieval Utility application, and is not executed by the end user (for example, installation personnel).
2. The **gru_0140.k** file contains the KIDS portion of the package and must be installed using the KIDS menu options.

4.0 Sample Installations

4.1 Sample Client GRU Installation

This section shows sample installations for the GRU:

1. Open the zip file (Figure 4-1).

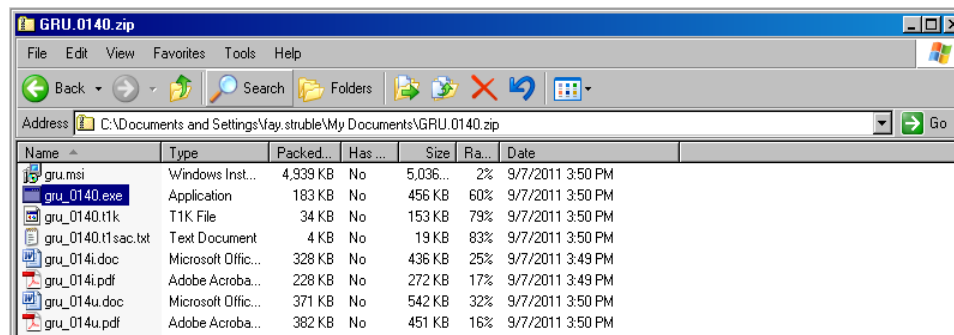


Figure 4-1: Zip File Directory example

2. Select **Extract All** from the **File** menu to use the **Extraction Wizard** (Figure 4-2) to extract the zip file to a temporary folder.

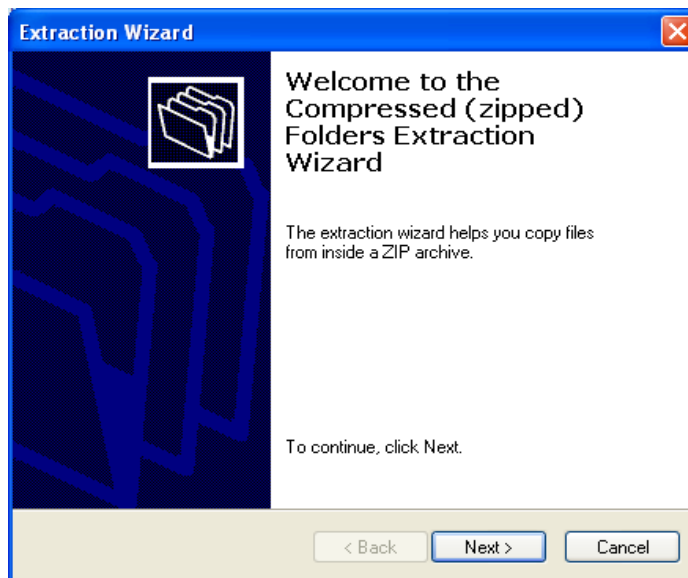


Figure 4-2: Zip File **Extraction Wizard**

3. Click **Next** to select the destination folder (Figure 4-3).

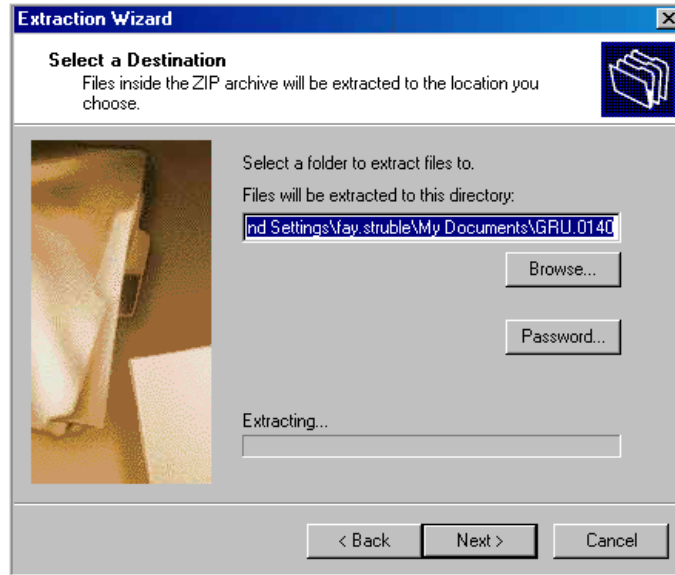


Figure 4-3: Selecting a Destination

4. Select the directory to which to extract the installation files. Click **Next**. The installation files are extracted to the selected directory and the Extraction Complete dialog displays (Figure 4-4).

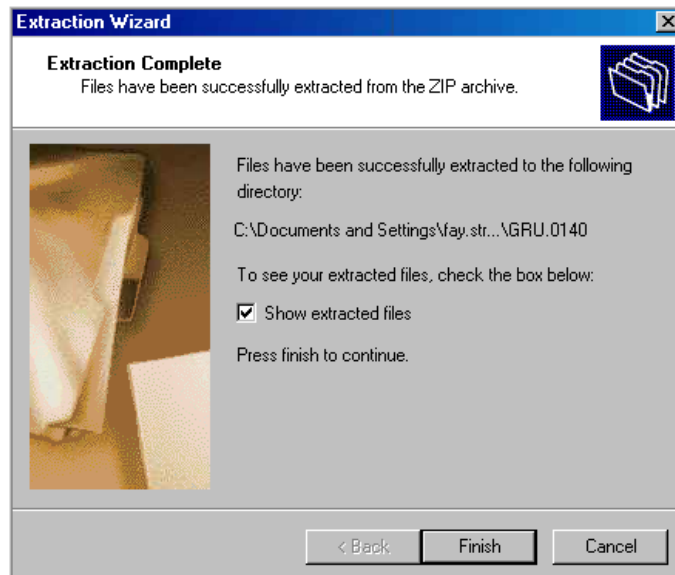


Figure 4-4: Extraction Complete

5. Select **Show extracted files** and click **Finish**. Windows Explorer (Figure 4-5) launches showing the files in the directory.

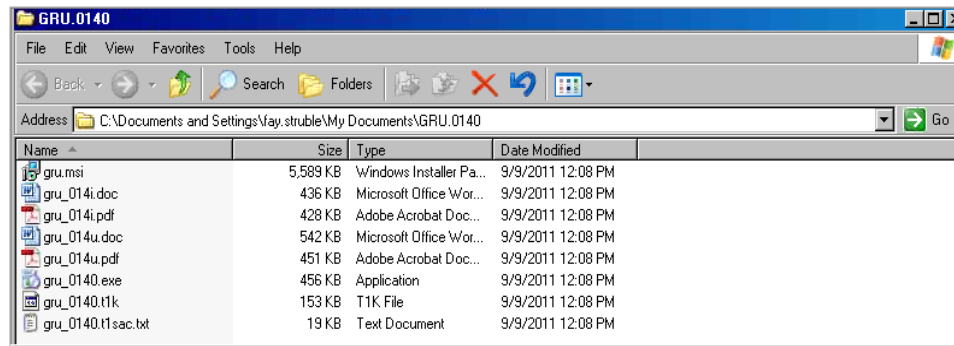


Figure 4-5: File Directory Example with New .exe File

- Locate the file **gru_0140.exe** and double-click it. The **Open File** dialog box appears (Figure 4-6).



Figure 4-6: Open File dialog

- Click **Run** to start the installation. The **Generic Retrieval Utility Setup Wizard** dialog (Figure 4-7) appears.

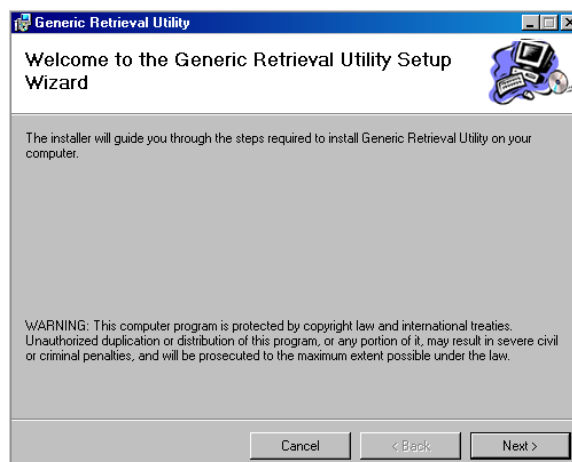


Figure 4-7: Generic Retrieval Utility Setup Wizard dialog

- Click **Next** to start the install. The **gru_0140.exe** is a self-extracting installation file. The Select Installation Folder dialog (Figure 4-8) displays.

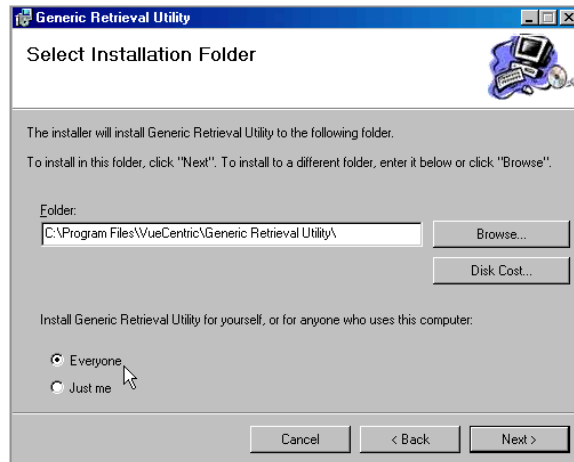


Figure 4-8: **Select Installation Folder** dialog

- If necessary, click **Browse** and navigate to the folder **C:\Program Files\VueCentric\Generic Retrieval Utility**. Select the folder to place its fully qualified path into the **Folder** field.
- Select **Everyone**.

Note: Ensure that the **Everyone** option is selected.

- Click **Next**. The **Confirm Installation** dialog (Figure 4-9) appears:

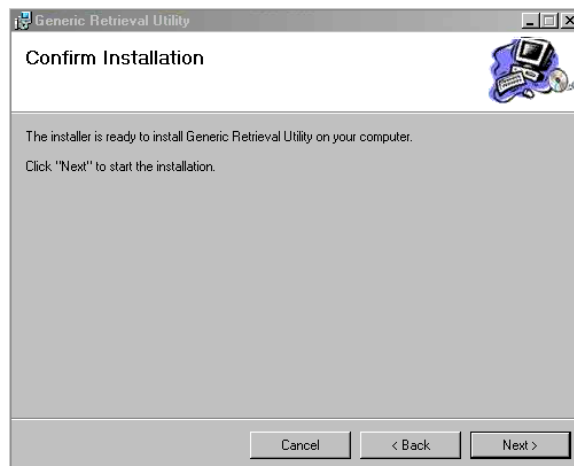


Figure 4-9: **Confirm Installation** dialog

- Click **Next**. The GRU application installs (Figure 4-10).

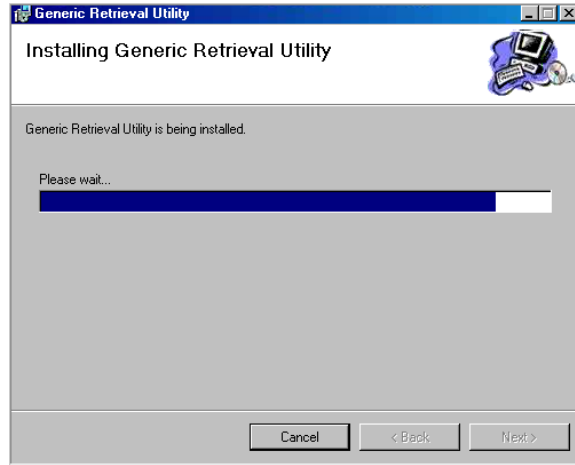


Figure 4-10: Installing GRU

13. The installation is complete (Figure 4-11).

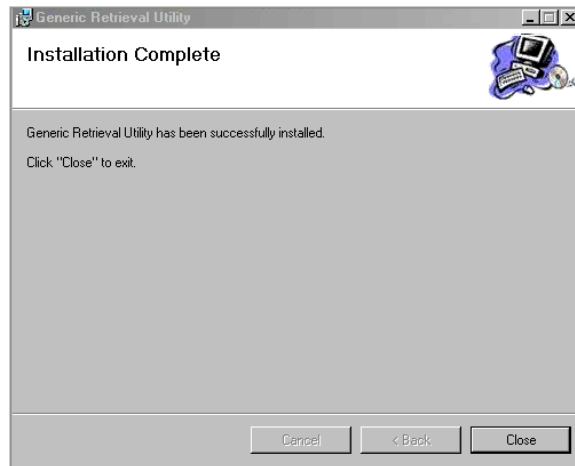


Figure 4-11: Installation Complete

14. Click **Close** to dismiss the dialog.

4.2 Sample RPMS GRU Installation

The following is a sample RPMS installation of the Generic Retrieval Utility:

```
Setting up programmer environment
This is a TEST account.

Access Code:

Setting up programmer environment
This is a TEST account.

Terminal Type set to: C-VT100

Select OPTION NAME: akmoeve          IHS Kernel
```

```
1      IHS Core ...
2      Device Management ...
3      VA FileMan ...
4      Manage Mailman ...
5      Menu Management ...
6      Taskman Management ...
7      User Management ...
8      Programmer Options ...
9      Operations Management ...
10     Information Security Officer Menu ...
11     Spool Management ...
EHR    RPMS-EHR Configuration Master Menu ...

You have PENDING ALERTS
      Enter "VA to jump to VIEW ALERTS option

Select IHS Kernel Option: programmer Options

      KIDS  Kernel Installation & Distribution System ...
      PG    Programmer mode
           Delete Unreferenced Options
           Error Processing ...
           Global Block Count
           List Global
           Routine Tools ...

You have PENDING ALERTS
      Enter "VA to jump to VIEW ALERTS option

Select Programmer Options Option: k  Kernel Installation & Distribution
Sys-tem

           Edits and Distribution ...
           Utilities ...
           Installation ...
           Patch Monitor Main Menu ...

You have PENDING ALERTS
      Enter "VA to jump to VIEW ALERTS option

Select Kernel Installation & Distribution System Option: installation

1      Load a Distribution
2      Verify Checksums in Transport Global
3      Print Transport Global
4      Compare Transport Global to Current System
5      Backup a Transport Global
6      Install Package(s)
           Restart Install of Package(s)
           Unload a Distribution

You have PENDING ALERTS
      Enter "VA to jump to VIEW ALERTS option

Select Installation Option: 1  Load a Distribution
Enter a Host File: c:\IHS\Patch8\gru_0140.k

KIDS Distribution saved on Feb 22, 2011@07:30:02
Comment: Generic Retrieval Utility 1.4
```

```
This Distribution contains Transport Globals for the following Package(s):
Build GENERIC RETRIEVAL UTILITY 1.4 has been loaded before, here is when:
    GENERIC RETRIEVAL UTILITY 1.4   Install Completed
                                   was loaded on Sep 07, 2010@10:05:26
OK to continue with Load? NO// y  YES

Distribution OK!

Want to Continue with Load? YES//
Loading Distribution...

Build GENERIC RETRIEVAL UTILITY 1.4 has an Environmental Check Routine
Want to RUN the Environment Check Routine? YES//
    GENERIC RETRIEVAL UTILITY 1.4
Will first run the Environment Check Routine, CIAOINIT

Use INSTALL NAME: GENERIC RETRIEVAL UTILITY 1.4 to install this Distribu-
tion.

    1      Load a Distribution
    2      Verify Checksums in Transport Global
    3      Print Transport Global
    4      Compare Transport Global to Current System
    5      Backup a Transport Global
    6      Install Package(s)
          Restart Install of Package(s)
          Unload a Distribution

You have PENDING ALERTS
    Enter  "VA to jump to VIEW ALERTS option

Select Installation Option: 6  Install Package(s)
Select INSTALL NAME:      GENERIC RETRIEVAL UTILITY 1.4      Loaded from Dis-
tribution                Loaded from Distribution  2/22/11@14:51:15
                        => Generic Retrieval Utility 1.4 ;Created on Feb 22, 2011@07:30:02

This Distribution was loaded on Feb 22, 2011@14:51:15 with header of
    Generic Retrieval Utility 1.4 ;Created on Feb 22, 2011@07:30:02
It consisted of the following Install(s):
GENERIC RETRIEVAL UTILITY 1.4
Checking Install for Package GENERIC RETRIEVAL UTILITY 1.4
Will first run the Environment Check Routine, CIAOINIT

Install Questions for GENERIC RETRIEVAL UTILITY 1.4

Incoming Files:

    8989.51  PARAMETER DEFINITION (including data)
Note: You already have the 'PARAMETER DEFINITION' File.
I will REPLACE your data with mine.

    8989.52  PARAMETER TEMPLATE (including data)
Note: You already have the 'PARAMETER TEMPLATE' File.
I will REPLACE your data with mine.

    19930.2  VUECENTRIC OBJECT REGISTRY (including data)
Note: You already have the 'VUECENTRIC OBJECT REGISTRY' File.
I will OVERWRITE your data with mine.

    19930.3  VUECENTRIC TEMPLATE REGISTRY (including data)
Note: You already have the 'VUECENTRIC TEMPLATE REGISTRY' File.
```

```
I will OVERWRITE your data with mine.

    19941.21  CIA EVENT TYPE  (including data)
Note:  You already have the 'CIA EVENT TYPE' File.
I will OVERWRITE your data with mine.

    19950.41  GENERIC RETRIEVAL DEFINITION
Note:  You already have the 'GENERIC RETRIEVAL DEFINITION' File.

    19950.42  GENERIC RETRIEVAL ITEM
Note:  You already have the 'GENERIC RETRIEVAL ITEM' File.

    19950.43  GENERIC RETRIEVAL DATATYPE  (including data)
Note:  You already have the 'GENERIC RETRIEVAL DATATYPE' File.
I will OVERWRITE your data with mine.

    19950.44  GENERIC RETRIEVAL OPERATOR  (including data)
Note:  You already have the 'GENERIC RETRIEVAL OPERATOR' File.
I will OVERWRITE your data with mine.

    19950.45  GENERIC RETRIEVAL VALUE TYPE  (including data)
Note:  You already have the 'GENERIC RETRIEVAL VALUE TYPE' File.
I will OVERWRITE your data with mine.

    19950.46  GENERIC RETRIEVAL COMPUTED VALUE
Note:  You already have the 'GENERIC RETRIEVAL COMPUTED VALUE' File.

    19950.49  GENERIC RETRIEVAL RESULT
Note:  You already have the 'GENERIC RETRIEVAL RESULT' File.

Enter the Device you want to print the Install messages.
Enter a '^' to abort the install.

DEVICE: HOME//

                                GENERIC RETRIEVAL UTILITY 1.4

Install Started for GENERIC RETRIEVAL UTILITY 1.4 :
                        Feb 22, 2011@14:51:57

Build Distribution Date: Feb 22, 2011

Installing Routines:
                        Feb 22, 2011@14:51:57

Running Pre-Install Routine: PRE^CIAOINIT

Saving local object registry settings...

Creating new object categories...

Installing Data Dictionaries:
                        Feb 22, 2011@14:51:57

Installing Data:
                        Feb 22, 2011@14:51:57

Installing PACKAGE COMPONENTS:

Installing REMOTE PROCEDURE
```

```
Installing OPTION
      Feb 22, 2011@14:51:57

Running Post-Install Routine: POST^CIAOINIT

  Restoring local object registry settings...

  Setting up default site parameters...

Updating Routine file...

Updating KIDS files...

GENERIC RETRIEVAL UTILITY 1.4 Installed.
      Feb 22, 2011@14:51:57

No link to PACKAGE file

NO Install Message sent

Install Completed

  1      Load a Distribution
  2      Verify Checksums in Transport Global
  3      Print Transport Global
  4      Compare Transport Global to Current System
  5      Backup a Transport Global
  6      Install Package(s)
          Restart Install of Package(s)
          Unload a Distribution

You have PENDING ALERTS
      Enter "VA to jump to VIEW ALERTS option

Select Installation Option:
```

Figure 4-12: RPMS installation of the Generic Retrieval Utility

5.0 Installation Configuration

1. To create a desktop shortcut to the **gru_0140.exe** file to simplify running the program, right-click anywhere on to the desktop, and select the **Shortcut** option from the **New** menu item (Figure 5-1).

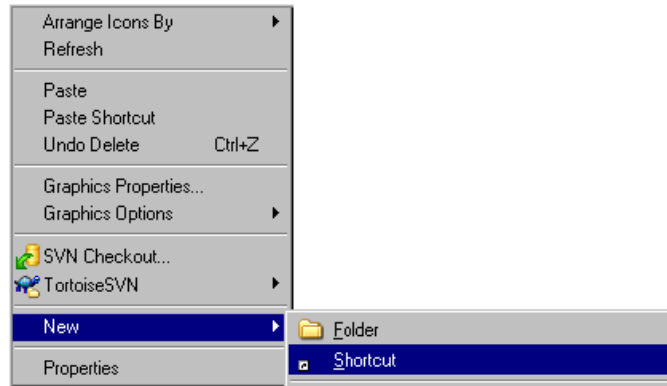


Figure 5-1: Desktop Shortcut Creation

The Create Shortcut dialog (Figure 5-2) displays.

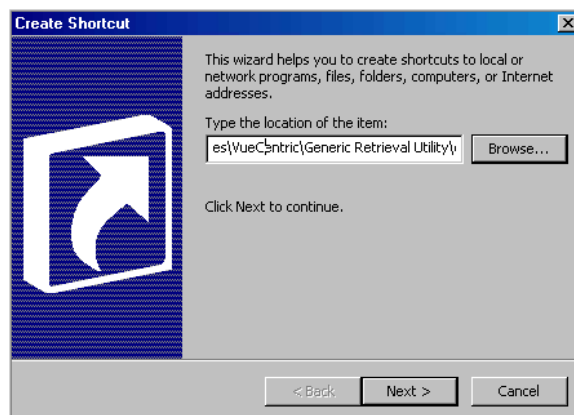
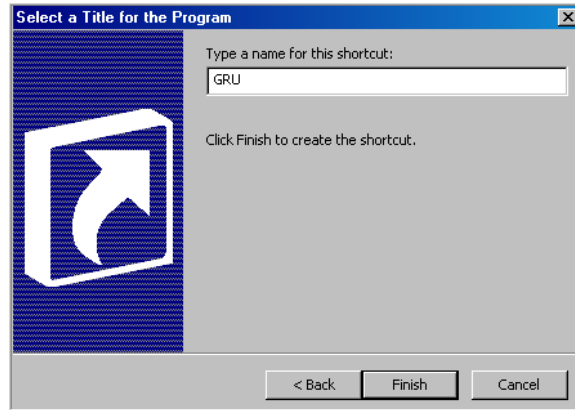


Figure 5-2: **Create Shortcut** dialog

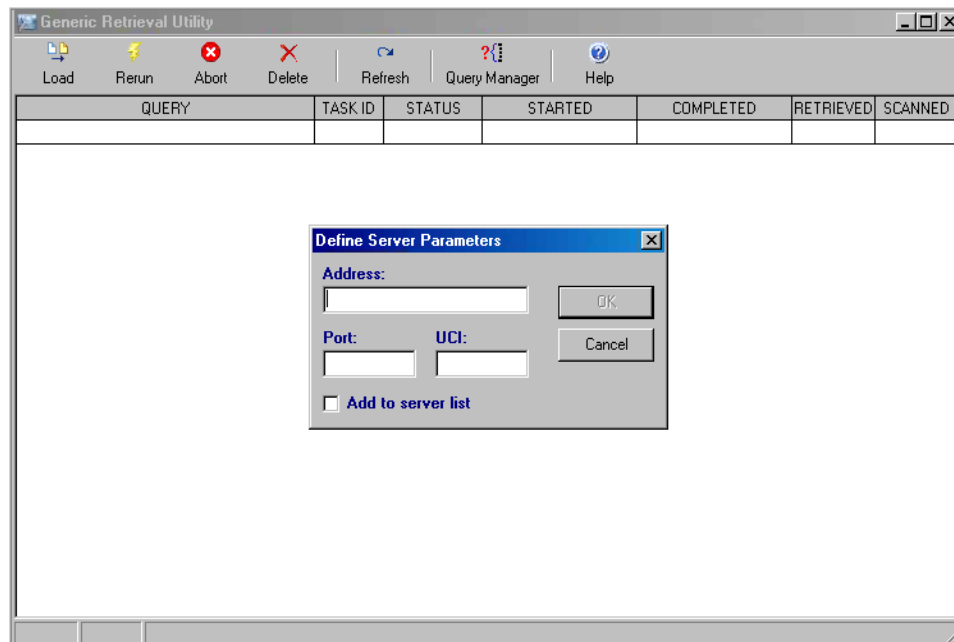
2. Click **Browse** and navigate to the location of the installed **gru.exe** file.
3. Select the file **gru.exe**. In the example, this location was **C:\Program Files\VueCentric\Generic Retrieval Utility\gru.exe**.
4. Click **Next** to display the **Select a Title for the Program** dialog (Figure 5-3).

Figure 5-3: **Select a Title for the Program** dialog

5. Type the name for the shortcut in the field.
6. Click Finish. An icon appears on the desktop (Figure 5-4).

Figure 5-4: **GRU** Icon

7. Double-click the icon to configure the Generic Retrieval Utility for the first time. The Define Server Parameters dialog displays (Figure 5-5).

Figure 5-5: **Define Server Parameters** dialog

8. Type the following in the listed field:
 - a. **Address:** The IP Address or Hostname of the server host.
 - b. **Port:** The port number at which the server is listening.
 - c. **UCI:** The namespace for the database.

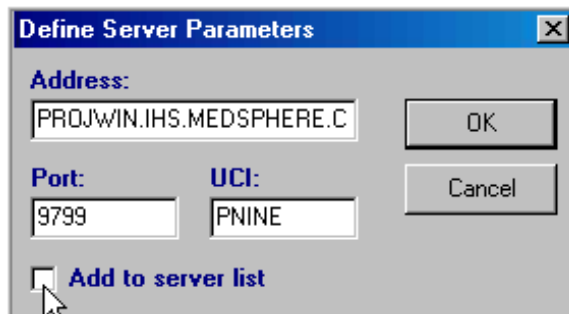


Figure 5-6: **Define Server Parameters** dialog, filled in

9. To permanently add the entry to the server list, select **Add to server list**.
10. Click **OK**. The **Connect To** dialog appears (Figure 5-8) showing the permanent server list name.



Figure 5-7: **Connect To** dialog

11. To add additional servers to the list, select **Add a server** from the list (Figure 5-8).

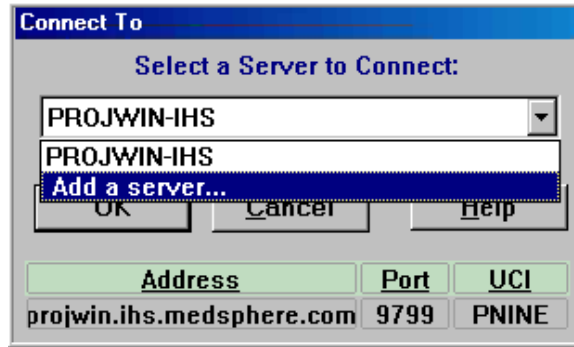


Figure 5-8: **Connect To** dialog, preparing to add another server

12. Click **OK**. This saves you from having to enter the data the next time GRU is started. The GRU (Generic Retrieval Utility) is now ready to use.

Acronym List

GUI	Graphical User Interface
IHS	Indian Health Service
MDAC	Microsoft Data Access Components
RPMS	Resource and Patient Management System

Contact Information

If you have any questions or comments regarding this distribution, please contact the OIT Help Desk (IHS).

Phone: (505) 248-4371 or (888) 830-7280 (toll free)

Fax: (505) 248-4363

Web: <http://www.ihs.gov/GeneralWeb/HelpCenter/Helpdesk/index.cfm>

Email: support@ihs.gov