



California Area Division of Environmental Health Services Program Overview and Update

CAROLYN GARCIA, REHS, MSPH
BRANCH CHIEF

Program Overview

Mission: To enhance the health and quality of life of all American Indians and Alaska Natives through shared decision making and sound public health measures, to the highest level by eliminating environmentally related disease and injury.

- 5 Federal & 3 Tribal Environmental Health Specialists
- California Area Division of Environmental Health Services (DEHS) provides Environmental Health Services directly to 85 Tribes/30 Tribal Health Programs in California



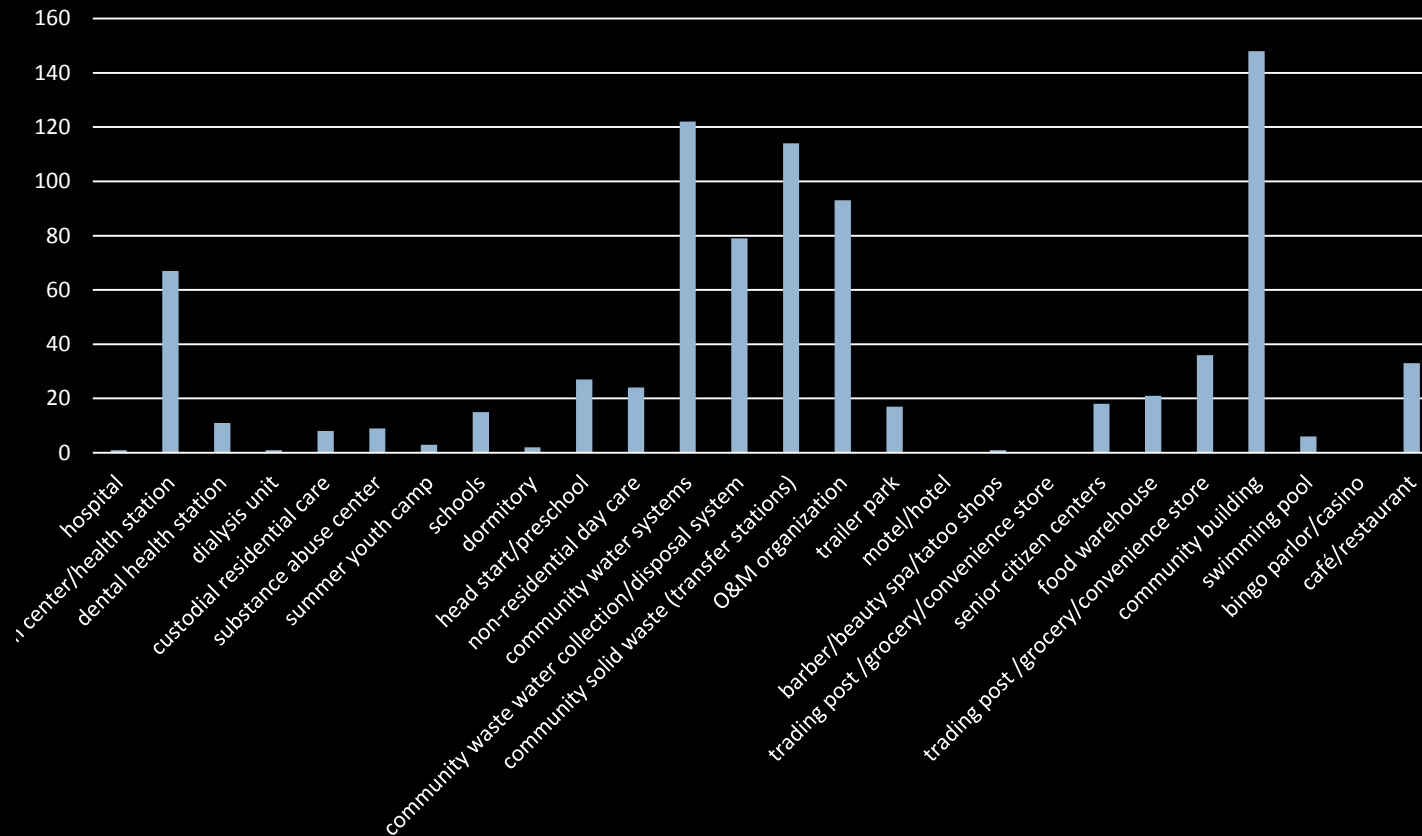
Program Activity



Surveys:

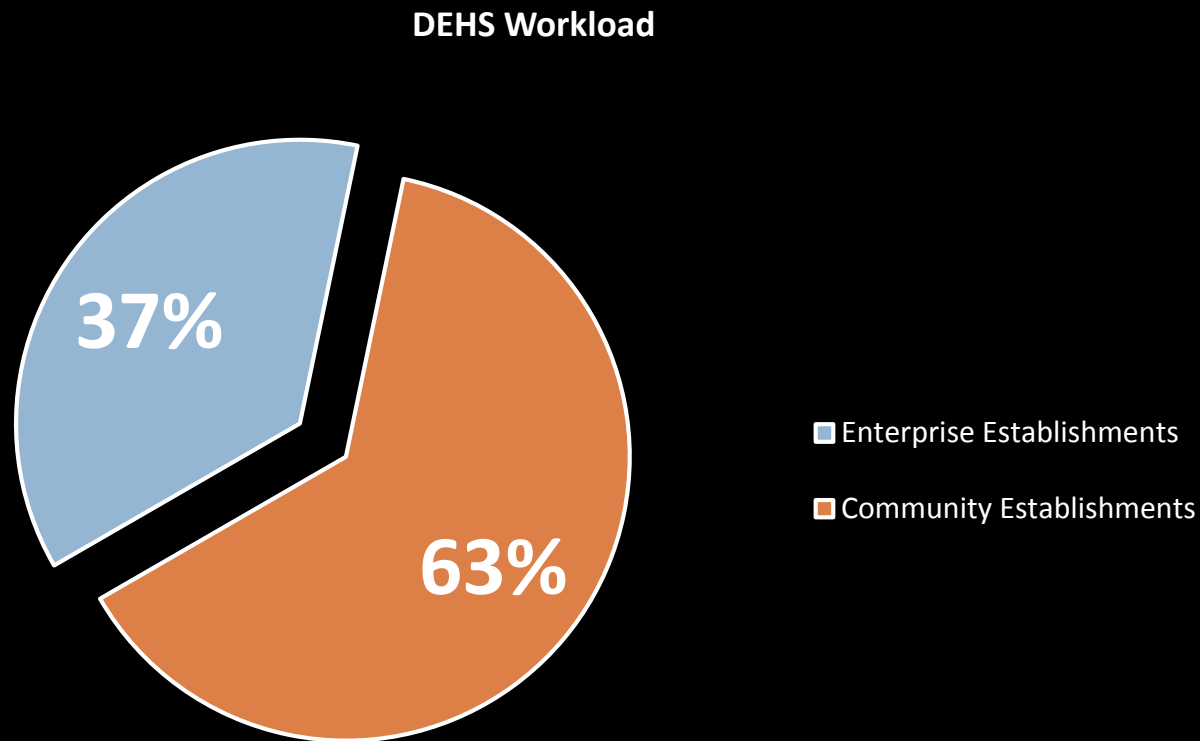
- Two core functions of environmental health surveys of tribal facilities:
 - Hazard surveillance:
 - identify public health risks in the environment
 - identify regulatory compliance gaps
 - Monitoring:
 - the effectiveness of interventions (i.e. training, policy development)

Program Activity: Surveys



- **Community Facilities:**
Health Care Facilities, Child Care, Head Start, Schools, Senior Centers, Community Water and Waste Systems, Solid Waste Transfer Stations
- **Enterprise Facilities:**
Retail Food Service, Pools, Gaming, Convenience Stores, Barber Shops, Beauty Spas

Program Activity: Surveys



Surveys Completed in FY2016:

- 392 environmental health surveys completed by DEHS staff
 - 18% EH Facility Surveys
 - *Head Start, Community/Senior Centers, Gaming, Health Care*
 - 82% Food Surveys
 - *72% in Enterprise Est.*
 - *10% in Community Est.*

Program Activity



Investigations/Assessments:

- Complaints & disease outbreaks related to water/food.
 - *1 investigation and 2 complaints documented in WebEHRS in FY2016.*
- Exposure assessments:
 - Nitrous Oxide
 - Radon
- Community Drinking Water:
 - Fluoride (*routinely performed for Santa Rosa, Elk Valley, Wiyot & Smith River*).
- Indoor Air Quality:
 - Mold and Moisture Intrusion
- Ergonomic Assessments

Program Activity



Tribal Capacity Building: Technical Assistance and Support

- Health Care Accreditation Support
 - 5 accreditation support surveys in FY2016
- Technical assistance with environmental health and safety policy & procedure development
- Technical assistance with development of tribal public health and safety ordinances and codes
- Facility plan reviews: renovation and new construction
- Environmental Health & Safety Program Audits

Program Activity



Tribal Capacity Building: Training

- 6 Trainings delivered by DEHS staff in FY2016
- DEHS staff develop and can provide tailored trainings for tribal staff and program managers in numerous public health and safety subjects:
 - food sanitation
 - indoor air quality
 - infection control
 - blood borne pathogens
 - playground safety
 - injury prevention
 - emergency response
 - hazardous materials handling
 - solid and hazardous waste management
 - office ergonomics
 - lockout / tagout
 - respiratory protection
 - hearing conservation

Other Program Activities:



Vector Control:

- Rabies
 - coordinating rabies vaccination clinics
 - dog bite investigations

Injury Prevention:

- Assistance and support with developing projects and grant proposals:
 - TIPCAP (*Tribal Injury Prevention Cooperative Agreement Program*) : CRIHB & SIHC
 - California Area DEHS Injury Prevention Mini Grant
 - Special Projects: Weitchpec Gun Safe Project

New initiatives

- **Annual Work Plans**

- Internal program management document
- Circulated internally
- Generated at the Area Level: one plan for the entire state of California

- **In FY2017: Consultation with Tribal Stakeholders**

- Work plans will be distributed to Tribal Health Program Directors and other Tribal stakeholders for review and comment
- California Area DEHS staff will contact Tribal Health Program Directors and stakeholders to review and finalize the plan

II. SPECIFIC PROGRAM PRIORITIES

A. Prioritized Program Areas

In previous program planning meetings with the Bemidji Area DEHS Program, the following program areas were identified as priorities for the RDO DEHS program:

<u>DEHS Program Area</u>	<u>Approximate % of Time</u>
FDS Facilities/Institutional (See below)	20
Safety Mgt./JCAHO/AAAH	15
Injury Prevention	20
Other (O&M, Water, Wastewater, Haz/Solid. Waste)	15
Vector/Epidemiology/Investigations	5
<hr/>	
Travel	15
Administrative/Miscellaneous	10

PROGRAM GOALS FOR CALENDAR YEAR 2009

1. Continue to support the Tribal Clinic in maintaining AAAHC accreditation. This will be accomplished by providing standardized policies and training to the clinic staff and by completing quarterly audits based on AAAHC standards. To improve the focus and delivery of these services audits will be completed quarterly and be based on three areas (life safety, general safety, and OSHA compliance). The fourth quarter will be a full review of the previous audits, follow up on issues, and developing a correction plan if needed.
2. Continue to assist the Tribe and the Wabeno School District with implementing the Creating Caring Communities Bully-Proofing Your School Program. This will include serving as a co-coordinator of the project, coordinating the teacher trainings, implementing the curriculums, and ensuring the long term success of the project. The second year funding has been obligated and the program has gotten positive response from the staff and the students.
3. Assist the Tribe in establishing Tribal Health and Safety Ordinances that will allow the Tribe to ensure the protection of its members and the environment for future generations. The first proposed ordinance will be the adoption of the FDA Food Code.

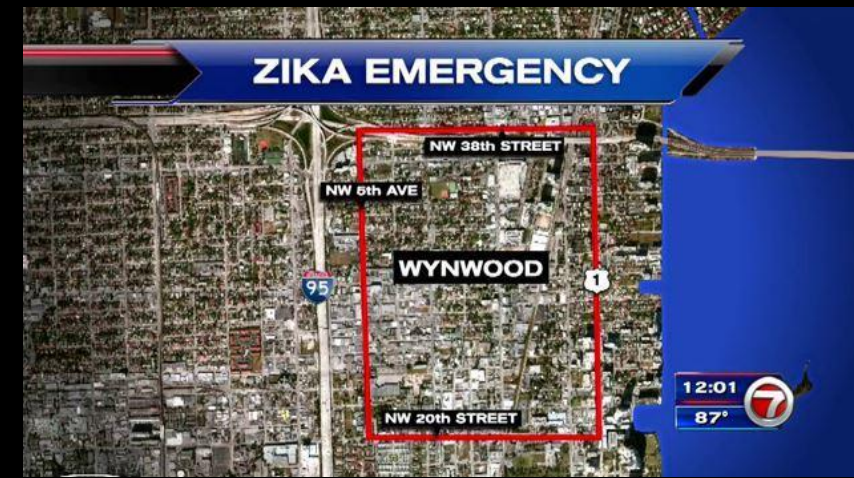
Take advantage of this opportunity!

- Opportunity to offer input in the program goals and objectives for FY2017
- Opportunity to offer feedback on program deliverables

New Initiative in 2016

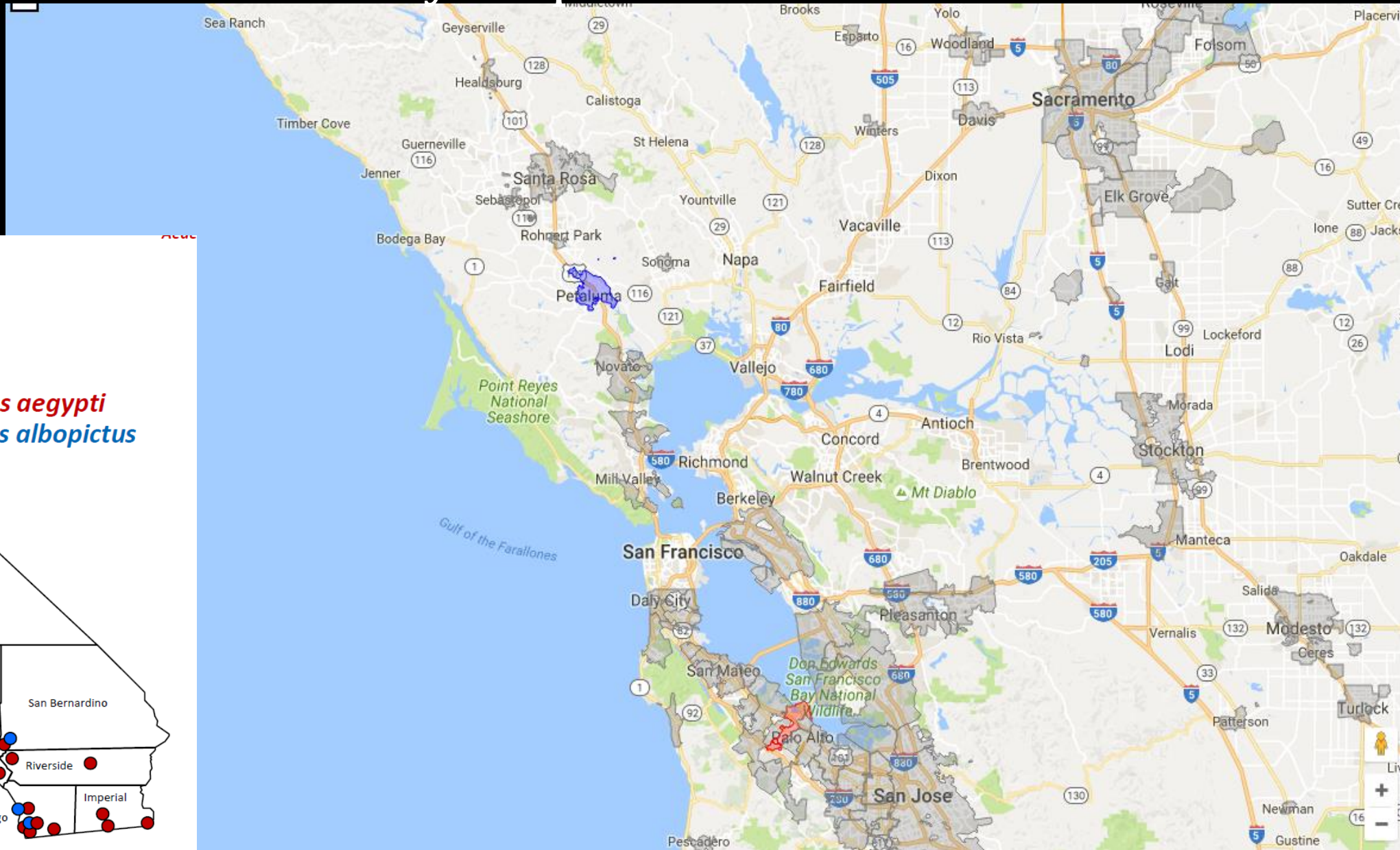
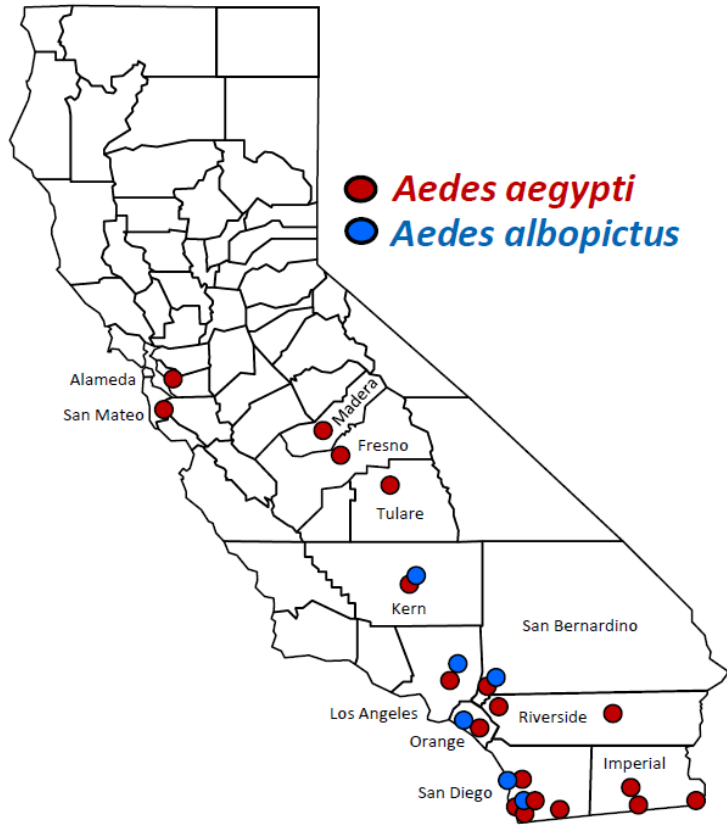
- Zika Response Guidance
 - Goal: Prevent the development of a local reservoir of Zika (and other Aedes mosquito borne diseases)
 - Designed to address two core environmental health functions:
 - Monitoring & Risk Assessment
 - Facilitate a tribal environmental health response to a confirmed case of Zika in a tribal community

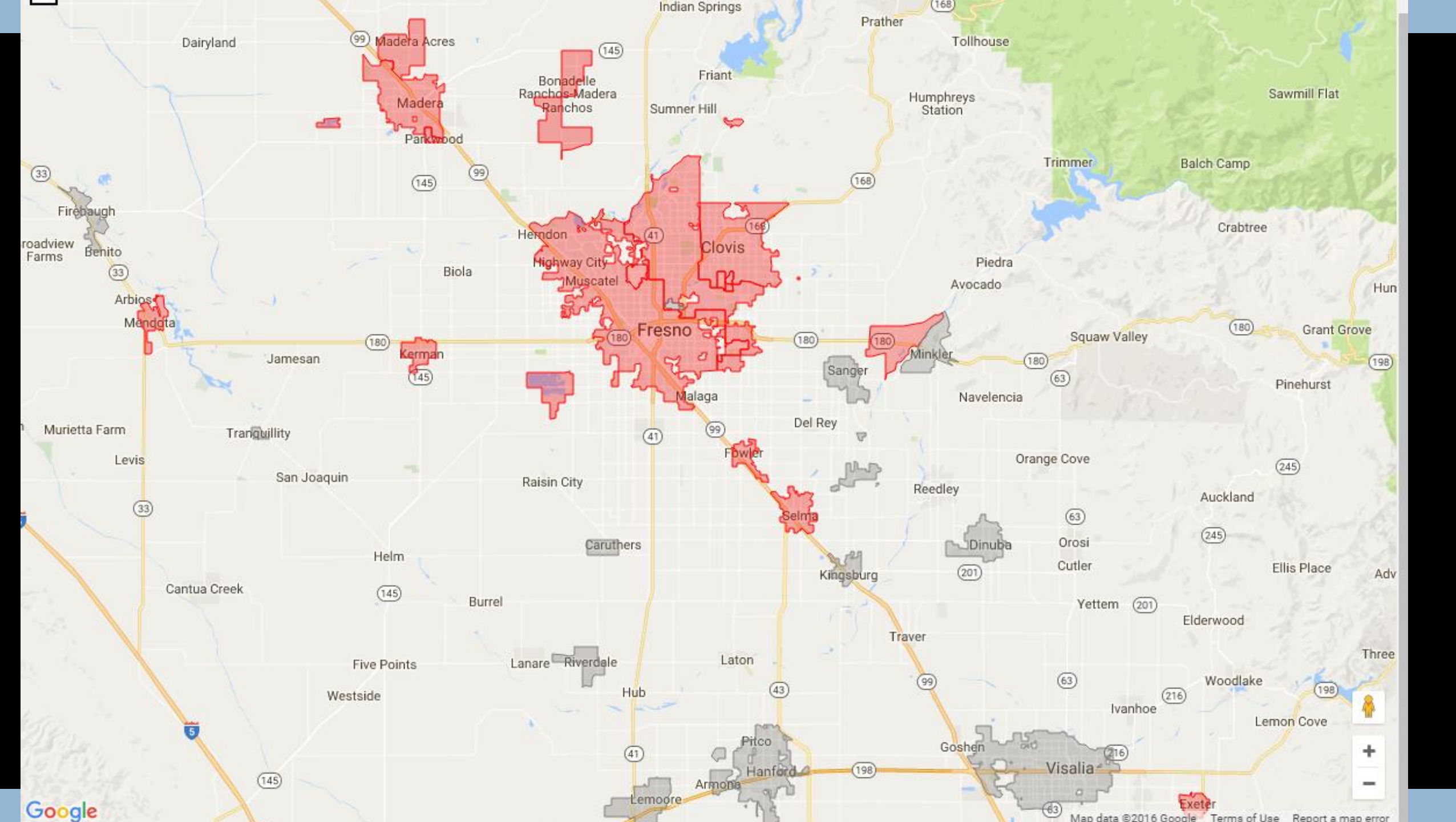
Zika Status

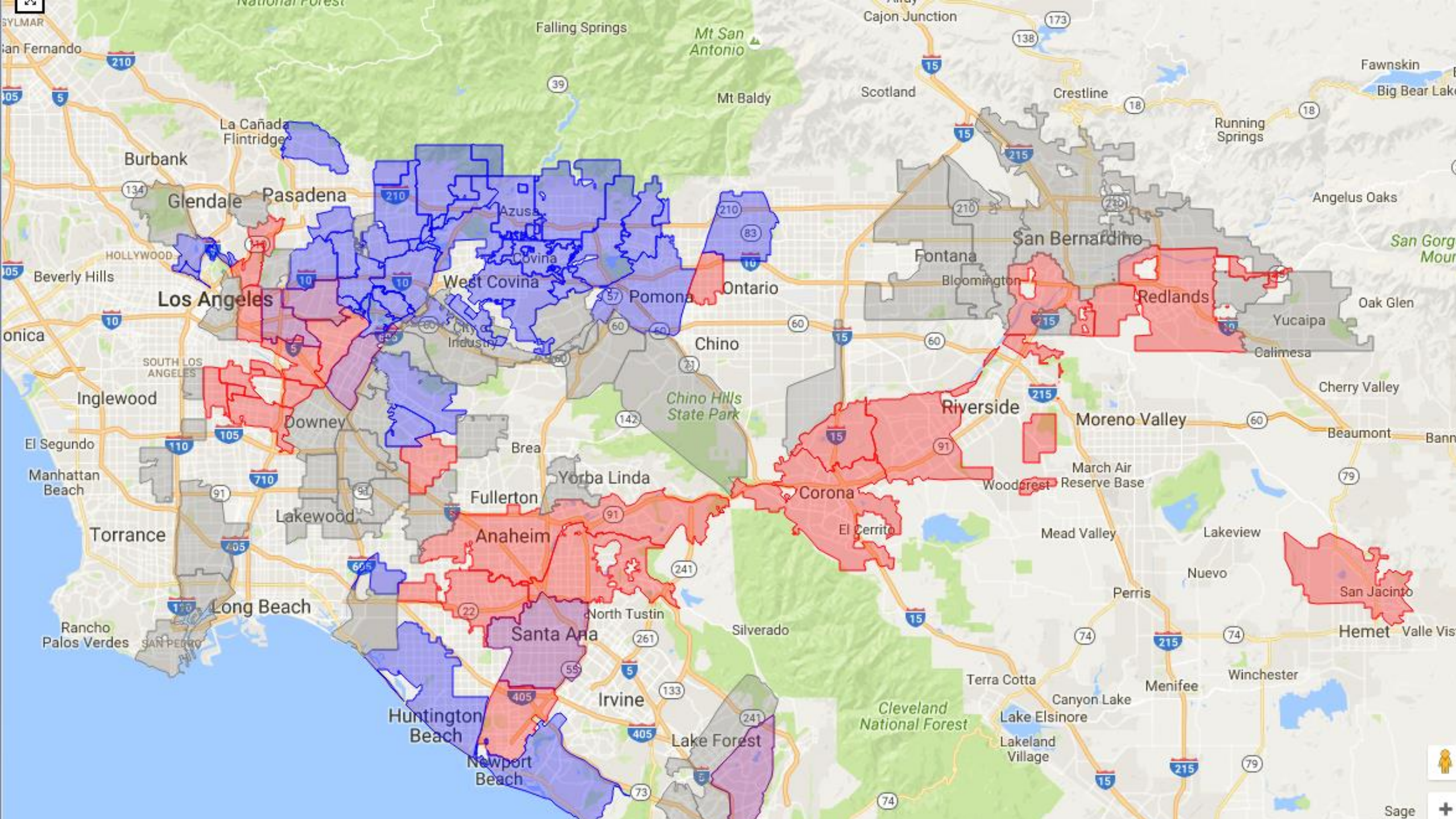


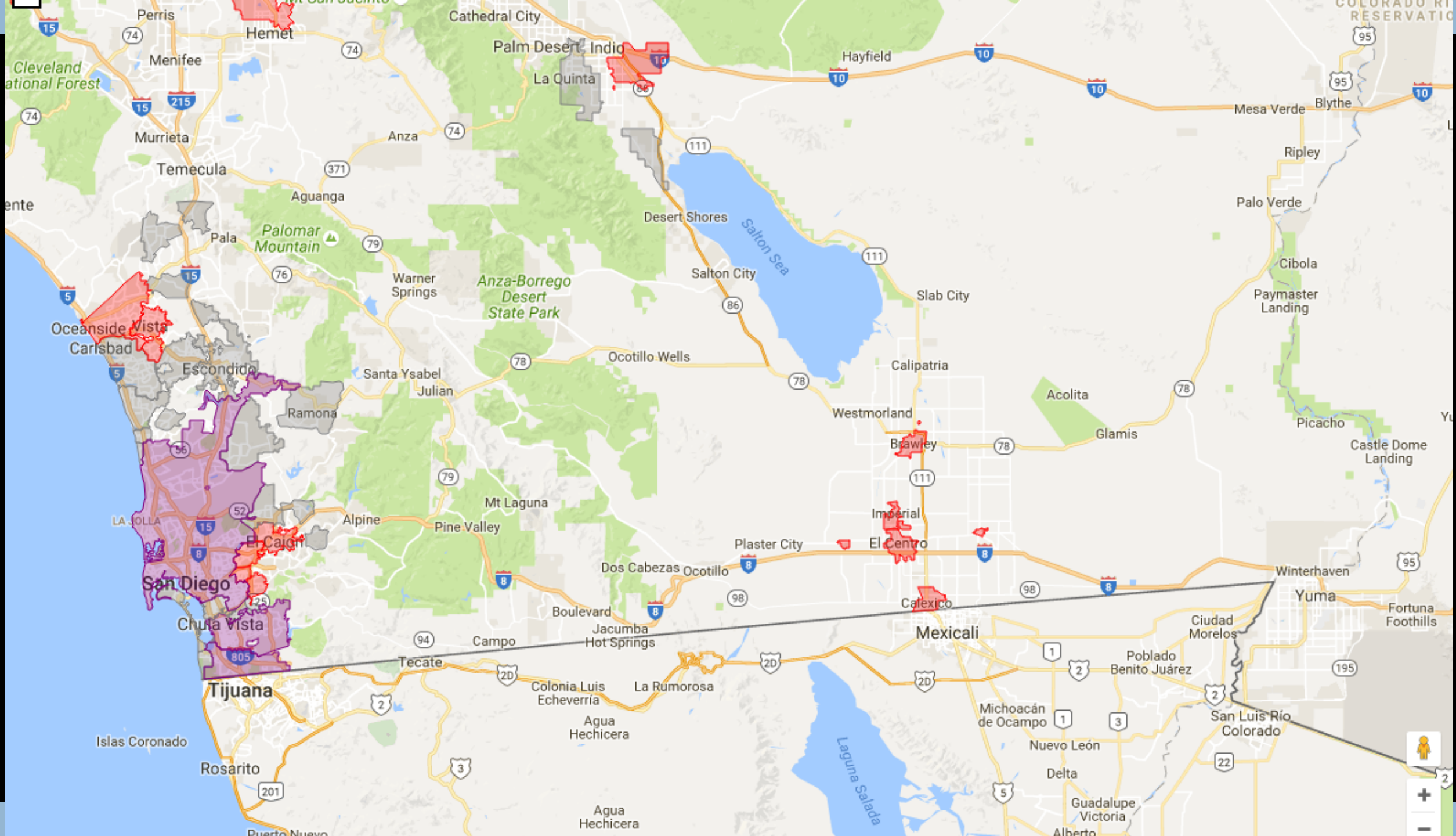
- 10/19/16: Florida Public Health Officials have confirmed 165 locally transmitted cases of Zika in the Miami Dade, Broward, Palm Beach and Pinellas counties
- 10/21/2016: 348 confirmed travel related cases of Zika infections reported in California since 2015
- 9/28/2016: Upon entering the rainy season, CDPH urges Californians to remove standing water

Monitoring: Calsurv Gateway Maps









**APPENDIX III
TRIBES NEAR AEDES INFESTATION
CURRENT AS OF 9/2/2016**

Note that the tribes listed in shaded rows have compacted their environmental health program shares. Distances from infestation determined using the Tribal government address.

County:	City where detected:	Tribes	Miles away
Madera	Madera	Picayune Rancheria of Chuchansi Indians	35
	Madera, Clovis	North Fork Rancheria of Mono Indians	43
Fresno	Clovis	Table Mountain Indian Rancheria	13
	Fresno, Exeter	Santa Rosa Community	33-40
	Clovis	Big Sandy Rancheria	29

**APPENDIX IV
ZIKA VIRUS INFECTIONS IN CALIFORNIA BY COUNTY
Current as of 10/11/2016**

COUNTY	TRAVEL ASSOCIATED	LOCALLY ACQUIRED	Aedes spp. Infestation Detected in Cty	Tribes located in County
Alameda	21	0	YES	NO
Contra Costa ^Ψ	15	0		NO
Fresno^Ψ	1	0	YES	North Fork, Table Mountain, Big Sandy Rancheria
Humboldt	2	0	NO	Yurok, Hoopa, Karuk, UIHS: Big Lagoon, Blue Lake, Table Bluff Rohnerville

* **Green area**: compacted EH shares

^Ψ 1 or more cases of WNV reported by local health department within the last 12 mos. & this table is not an inclusive list of WNV in CA

* **Yellow area**: EH services through CADEHS

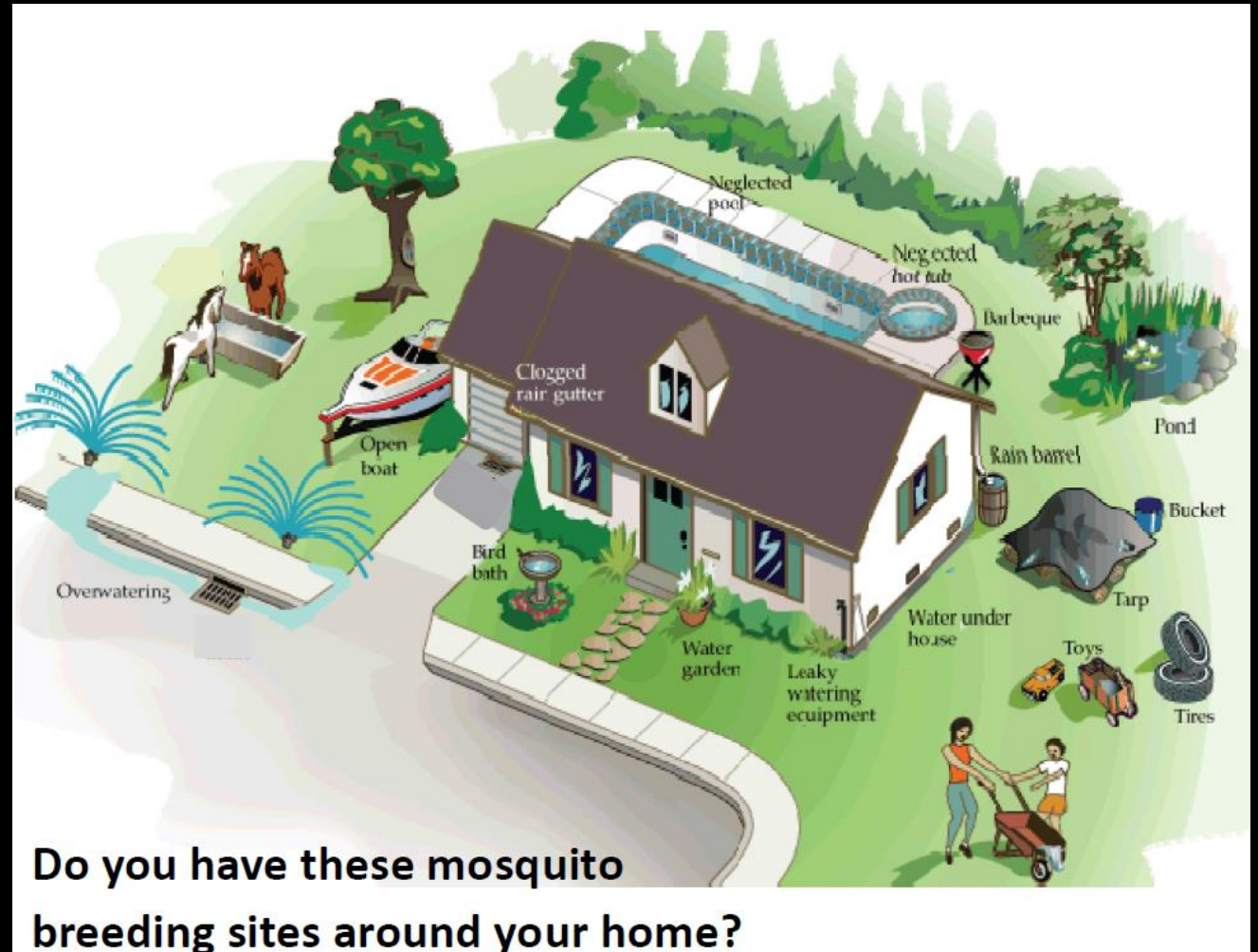
◊ No Aedes Surveillance in the County

Monitor & Risk Assessment: EH Actions

- Monitor reports of Zika infections reported by CDPH
- Monitor Calsurv for Aedes infestation Reports
- Assess the proximity of tribes to reported Aedes infestations and cases of disease
- Prioritize tribes within 10 miles of a detected infestation and cases of Zika infection for developing a public education and outreach program

Public Health Outreach

- Advocate for Source Reduction:
 - Educate public on eliminating larval habitats around residences and facilities
 - Educate the public to report daytime biting mosquitos to their local health department and vector control district
- Educate health providers about the recommended environmental health response to a Zika diagnosis



CDC/CDPH Recommended EH response to a Zika Diagnosis

- Zika virus reportedly remains in the blood up to 7 days after the onset of symptoms
- During the first week the individual is viremic:
 - initiate an intensive public education outreach in the nearby community to encourage residents identify and eliminate larval habitats and take personal protective measures (long sleeves, insect repellent)
 - within 150-200 yards around the viremic individual, identify and eliminate larval habitat. Treat all water containers within this perimeter that cannot be emptied or covered
 - initiate an intensive surveillance effort to determine the presence of Aedes spp. mosquito, estimate abundance, delineate distribution and assess pesticide resistance
 - treat for adult mosquitos within 150-200 yards of the viremic persons home

DEHS will assist with preparing for an EH response

- 7 Day Window: Need to prepare beforehand to be effective
- To prepare:
 - Need to review tribal codes and ordinances regarding the use of pesticides on tribal lands
 - Prepare public education material, press releases, etc.
 - Develop a relationship with the local vector control district or pest control operator for surveillance and/or control services
 - Opt for vector control services: the pest control operator will need to obtain EPA certification: required for the application of restricted use pesticides on tribal lands

Questions?

THANK YOU FOR YOUR SUPPORT AND ATTENTION!