

Pit River Health Service Burney, CA

Dr. Joann Davis, DNP, MSN-PH, BSN, RN
Outreach Manager



November 2025



HISTORIC FACTORS BEFORE ACCESS TO AIMSS



CRITICAL GAPS IN PERINATAL CARE

What Was Missing



CRITICAL GAPS IN PERINATAL CARE

What Was Missing

1) Referral Guidance (Moms were left on their own to coordinate their OB care)

- ❖ **Needs Recognition**
- ❖ **Assistance with finding Providers**
- ❖ **Scheduling Appointments**
- ❖ **Rescheduling pre- and post-natal screenings for mom and baby**
- ❖ **Risk Assessment / Intervention**



CRITICAL GAPS IN PERINATAL CARE

What Was Missing

2) Education: There was no research-based curriculum with the following information, such as on :

- ❖ Prenatal Care
- ❖ Infant Care & Safety
- ❖ Breast Feeding
- ❖ Family Planning
- ❖ Toddler Care & Safety
- ❖ The Growing Child
- ❖ Family Wellness



CRITICAL GAPS IN PERINATAL CARE

What Was Missing

3) Case Management (Lack of Professional Oversight & F/U)

- ❖ Intra-professional Collaborations (Nursing Discussions / Advocacy)
- ❖ Inter-disciplinary Consultation (OB, RNs, CHRs, CHWs, LC, LMHC, LCSW, Doulas, etc.)
- ❖ Community Connections
- ❖ Access to Valuable Resources



CRITICAL GAPS IN PERINATAL CARE

What Was Missing

4) Socioeconomic Support with Incentives such as:

- ❖ Gas Vouchers
- ❖ Grocery Gift Cards
- ❖ Infant Formula
- ❖ Diapers
- ❖ Gym Membership
- ❖ Infant Car Seats
- ❖ Breast Pump Assistance



LOOK HOW FAR WE'VE COME

Meet Our Pit River Perinatal Team



Kelly Crosby-
Outreach Director
RN, PHN, BSN



Joann Davis-
Outreach Manager
DNP, MSN-PH, RN



Patsy
Thompson,
CHR/CHW,
Supervisor,
CCMA



Merri
Lynette
Eleck- CHR



Jennifer
Quinn CHW



Allencia Butler LVN
II, Care Plan
Manager

AIMSS

American Indian Maternal Support Services



THE AIMSS PROGRAM

INFORMED BY

THE JOHN HOPKINS

CENTER FOR INDIGENOUS HEALTH (CIH)



THE FAMILY SPIRIT PROGRAM

- ❖ **EFFECTIVE:** After AIMSS Program
(Continues for kids 1-5 yrs old)
- ❖ **TRUSTED:** Over 65 lessons, starting
from pregnancy to age 5
- ❖ **RESEARCH-BASED:** Scientifically driven



THE FAMILY SPIRIT PROGRAM

- ❖ **CULTURALLY FOCUSED:** Tailored to fit traditions and customs of families
- ❖ **INDIGENOUS:** Involves Navajo, White Mountain Apache, and San Carlos Apache tribal groups - since 1995.



THE AIMSS PROGRAM

- ❖ HOME VISITS
- ❖ BREAST FEEDING GUIDANCE
- ❖ NEEDS ASSESSMENT
- ❖ IMPORTANT REFERRALS
- ❖ INFANT CARE – 0 to 1
- ❖ HEALTH SCREENINGS
- ❖ FAMILY PLANNING



THE AIMSS PROGRAM

- ❖ INCENTIVES
- ❖ IMMUNIZATION TRACKING
- ❖ HEALTH CARE EDUCATION
- ❖ MEDICAL CARE COORDINATION
- ❖ BH REFERRAL & SUPPORT
- ❖ HARM PREVENTION



MAXIMIZING AIMSS

THE PIT RIVER WINNING APPROACH

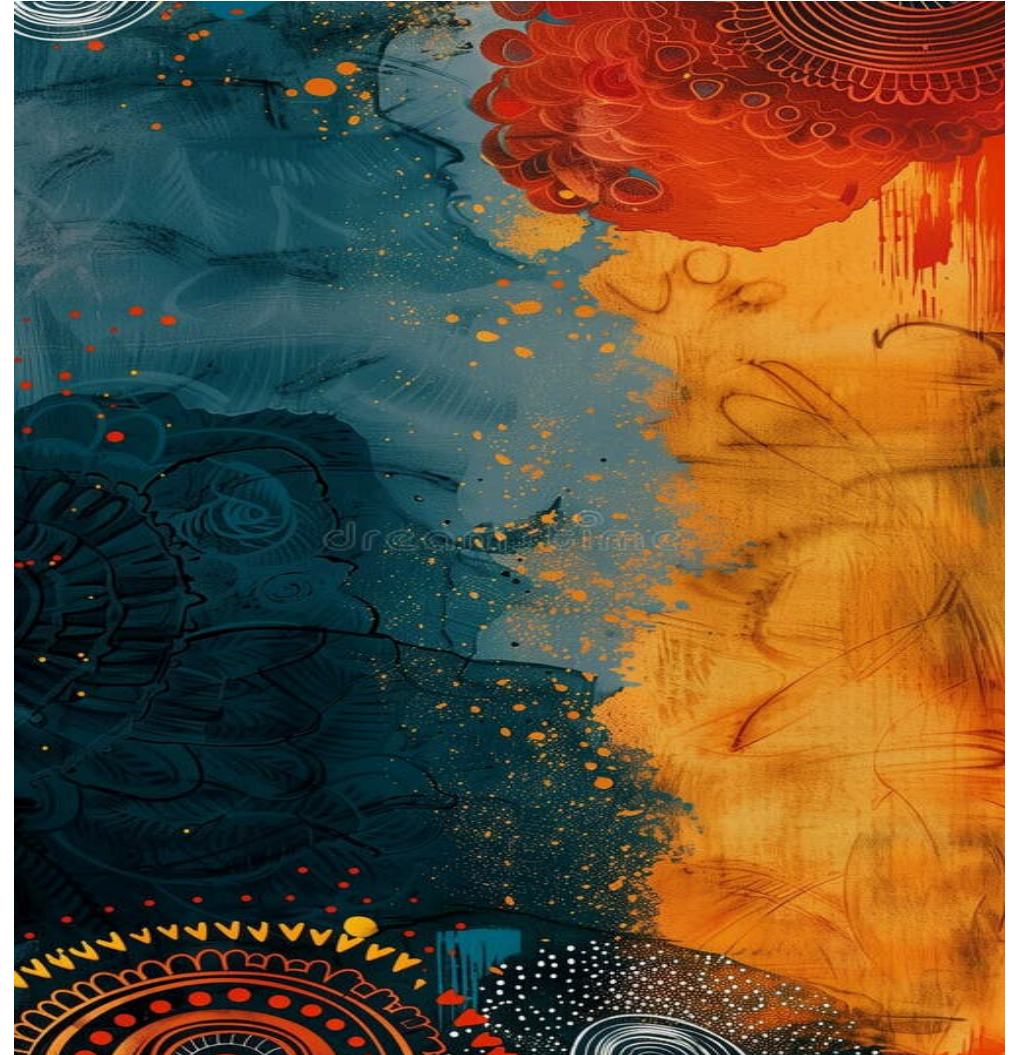
- ❖ **PASSION & COMMITMENT**
- ❖ **EDUCATION & TRAINING**
- ❖ **STAFF RETENTION**
- ❖ **SUSTAINED PROFESSIONAL
GUIDANCE**



MAXIMIZING AIMSS

THE PIT RIVER WINNING APPROACH

- ❖ **BI-WEEKLY ZOOM CASE MANAGEMENT**
- ❖ **WEEKLY CONSULTANT CALL-IN**
- ❖ **CASELOAD MONITORING**
- ❖ **NEW PIT RIVER PRENATAL EXPANSIONS**



NEW PIT RIVER PRENATAL EXPANSION

Partnership ECM (Enhanced Care Management)

Birth Equity Program

- ❖ Nurse Family Partnership
- ❖ Doula Partners LLC
- ❖ DHCS Doula Directory
- ❖ Medically Tailored Meals
- ❖ Soars Transportation
- ❖ TeleMed2U
- ❖ Shasta (CPSP)

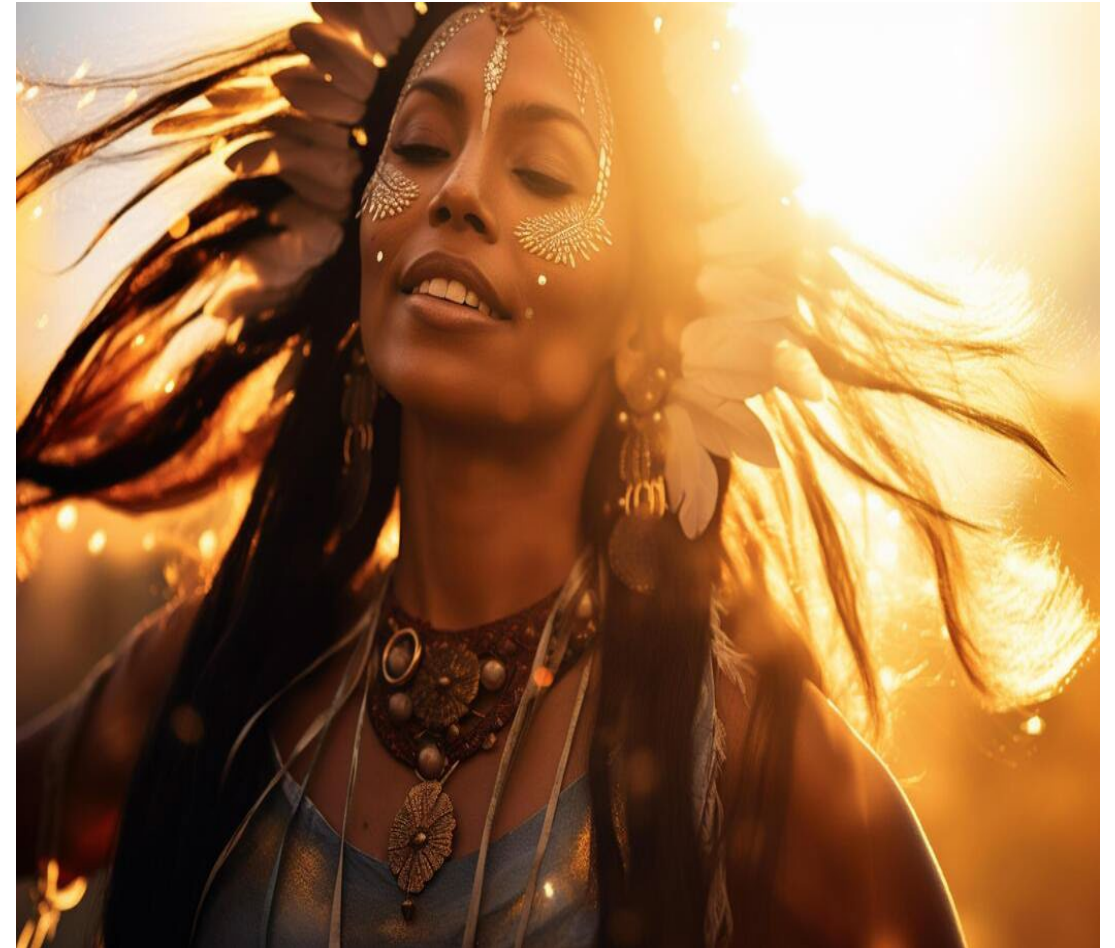


NEW PIT RIVER PRENATAL EXPANSION

Partnership ECM (Enhanced Care Management)

Birth Equity Program

- ❖ **North State Care Clinic**
- ❖ **Life Light Pregnancy Center**
- ❖ **MotherToBaby**
- ❖ **Teen Preg. & Parenting Prog.**
- ❖ **Women Connect**
- ❖ **Adoption Choices of North CA**
- ❖ **Adoption Connection**



NEW PIT RIVER PRENATAL EXPANSION

Partnership ECM (Enhanced Care Management)

Birth Equity Program

- ❖ **American Adoptions**
- ❖ **Lifeline Adoption**
- ❖ **S.C. Child Safety Seats**
- ❖ **HHS Child Safety Seats**
- ❖ **S.C. Healthy Families**
- ❖ **Pathways to Hope**

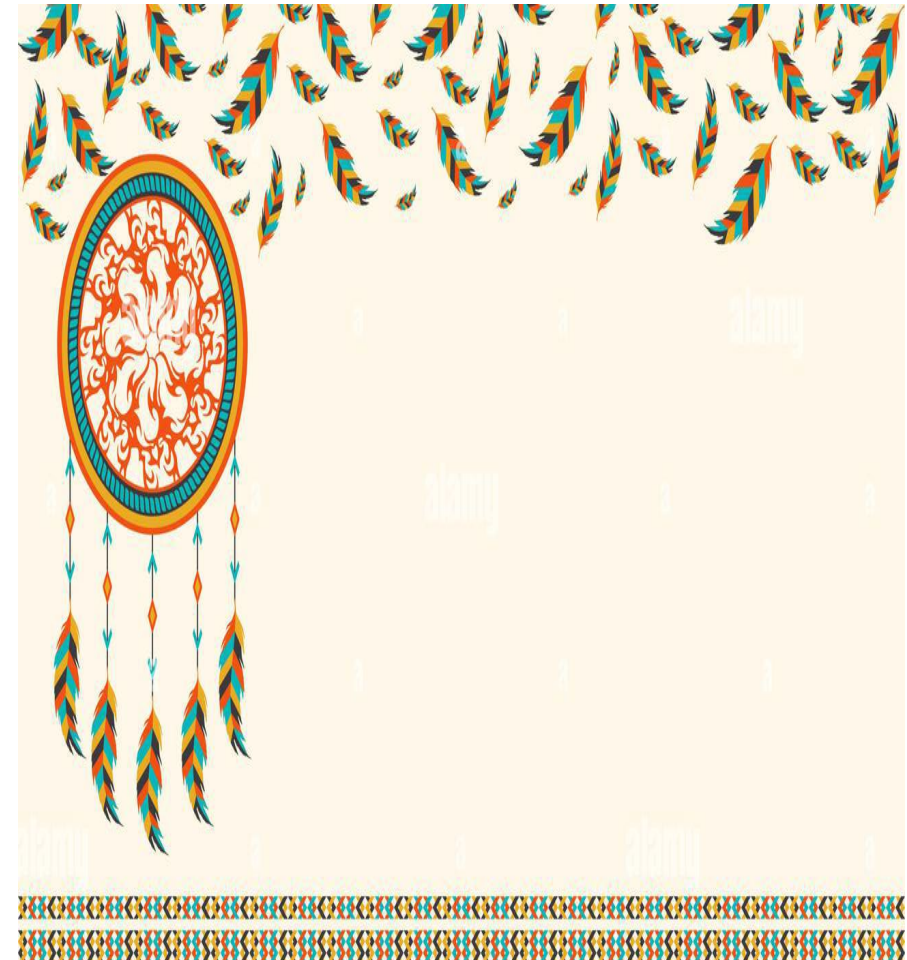


A SUCCESS STORY

ONE OF MANY

BRIEF BACKGROUND

- ❖ **Native American Mom**
- ❖ **Infant**
- ❖ **Multiple Kids**
- ❖ **No Income**
- ❖ **BH Client**

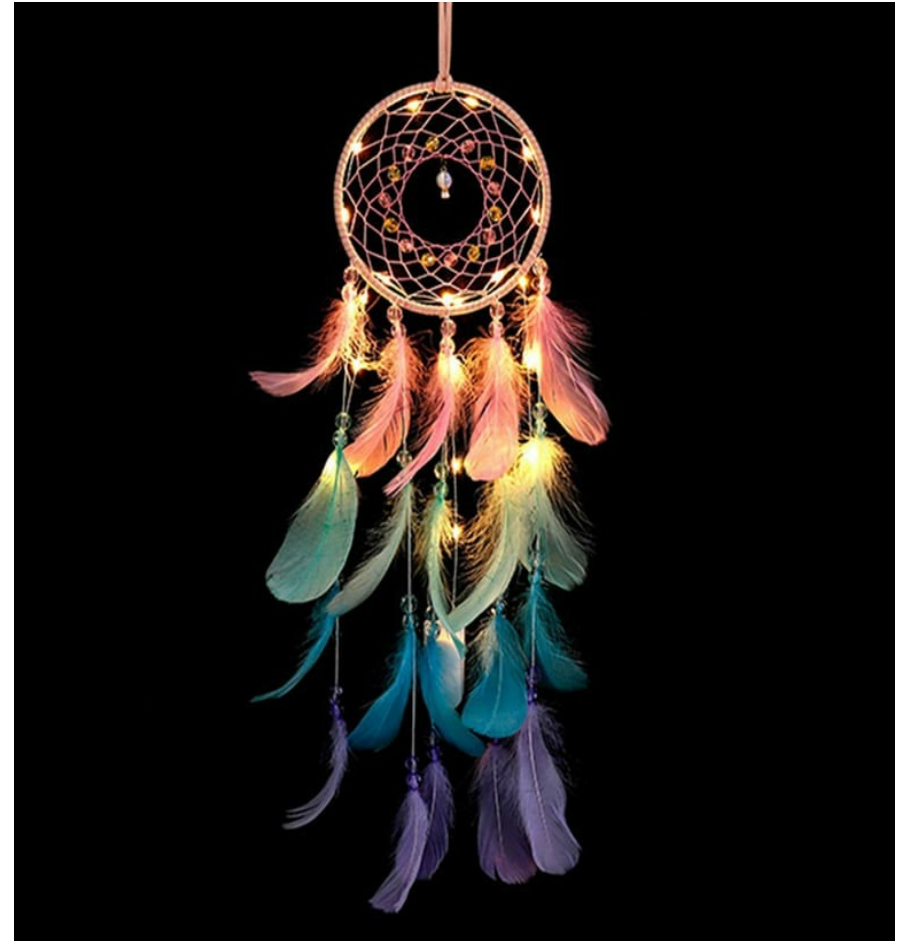


A SUCCESS STORY

ONE OF MANY

BRIEF BACKGROUND

- ❖ No Running Water
- ❖ No Electricity
- ❖ No Transportation
- ❖ Limited Food
- ❖ Abusive Mate



A SUCCESS STORY

ONE OF MANY

Threatening Turning Point

- ❖ **CHR - Excellent Advocate**
- ❖ **Coordinated - Food, Water, Transportation**
- ❖ **Client Left Abuser**
- ❖ **Client Reunited with Abuser**
- ❖ **Abuser Harmed Family**
- ❖ **CPS and Sherriff Involved**
- ❖ **Family Taken to Shelter**

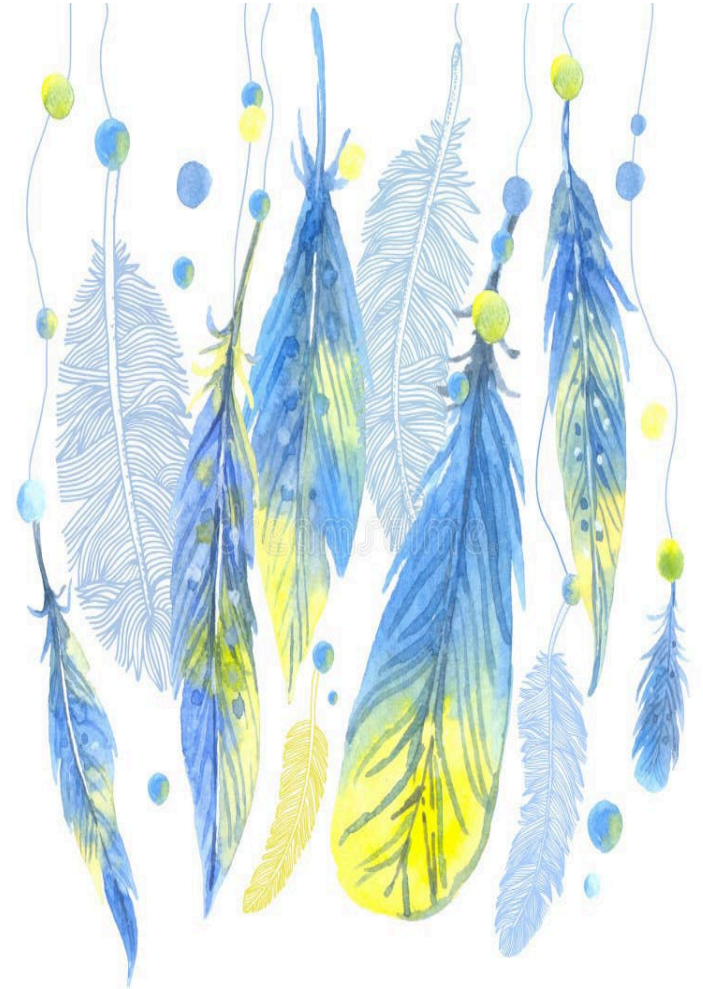


A SUCCESS STORY

ONE OF MANY

HAPPY ENDING

- ❖ **Mom Flourished**
- ❖ **Reunited with Abuser**
- ❖ **Relapsed**
- ❖ **Lost job, Shelter, Custody of kids**
- ❖ **Joined Parenting Classes**
- ❖ **Now has 2 jobs. Visitation Approved**
- ❖ **Flourishing Again with Support from PRHS Perinatal Services Programs**



THE END

