



# Modernization 101

Health IT Modernization Program

November 2025



# Modernization Program Vision



Provide the best possible EHR, managed by its users, for its users, that will drive high-quality health care through sustainable, modern, and easy-to-use tools.

## Guiding Principles

- DESIGN** solutions that deliver culturally appropriate care, quality, safety, and improved patient outcomes
- EMPHASIZE** usability and human-centered design
- ENGAGE** patients in their health journey through improved patient access
- ADOPT** enterprise technology solutions that support continuity of care

- PARTNER** across I/T/U for collaborative decision-making that is fully informed by clinical and business users in the field
- CONFIGURE** solutions to meet organizational requirements with minimal customization
- UTILIZE** recognized best practices across clinical and business processes
- PROVIDE** timely and complete communication, training, and tools to support a successful deployment

# PATH EHR Overview



**PATH EHR uses Oracle Health technology to offer a secure, scalable, and configurable solution to support high-quality health care delivery across multiple organizations.**

## **Modern Commercial Solution**

Provides a proven configurable solution with optimized workflows for patient care delivery

## **Cloud-Hosted and Centrally Managed**

Supports the logical configuration of organizations into a single, secure, and scalable cloud-hosted infrastructure for PATH EHR

## **Comprehensive Support Services**

Includes implementation, new functionalities, issue resolution, enterprise application support, and secure cloud management

# Key Features and Capabilities of PATH EHR

*Comprehensive clinical, financial, and operational solution supporting the end-to-end continuum of care by fully replacing RPMS functionality and more.*

## CLINICAL

### Full Continuum of Care

Robust patient chart application, with a full suite of applications across the continuum of health and care

## FINANCIAL

### End-to-End Revenue Cycle

From registration to claims and beyond; revenue cycle capabilities are driven from clinical workflows

## OPERATIONAL

### Monitoring and Backend Support

End-user adoption, event and error logging, auditing, and performance improvement capabilities inherent within PATH EHR

## INTEROPERABILITY

### Data Interoperability

Data can be shared in multiple ways and multiple formats, securely, quickly, and through industry-standard methods

## REPORTING

### EHR and Enterprise-Wide

Pre-packaged reports, ad hoc queries, from single patient record; enterprise-wide analytics based on EHR and external data sources

# A Single Patient Record in PATH EHR

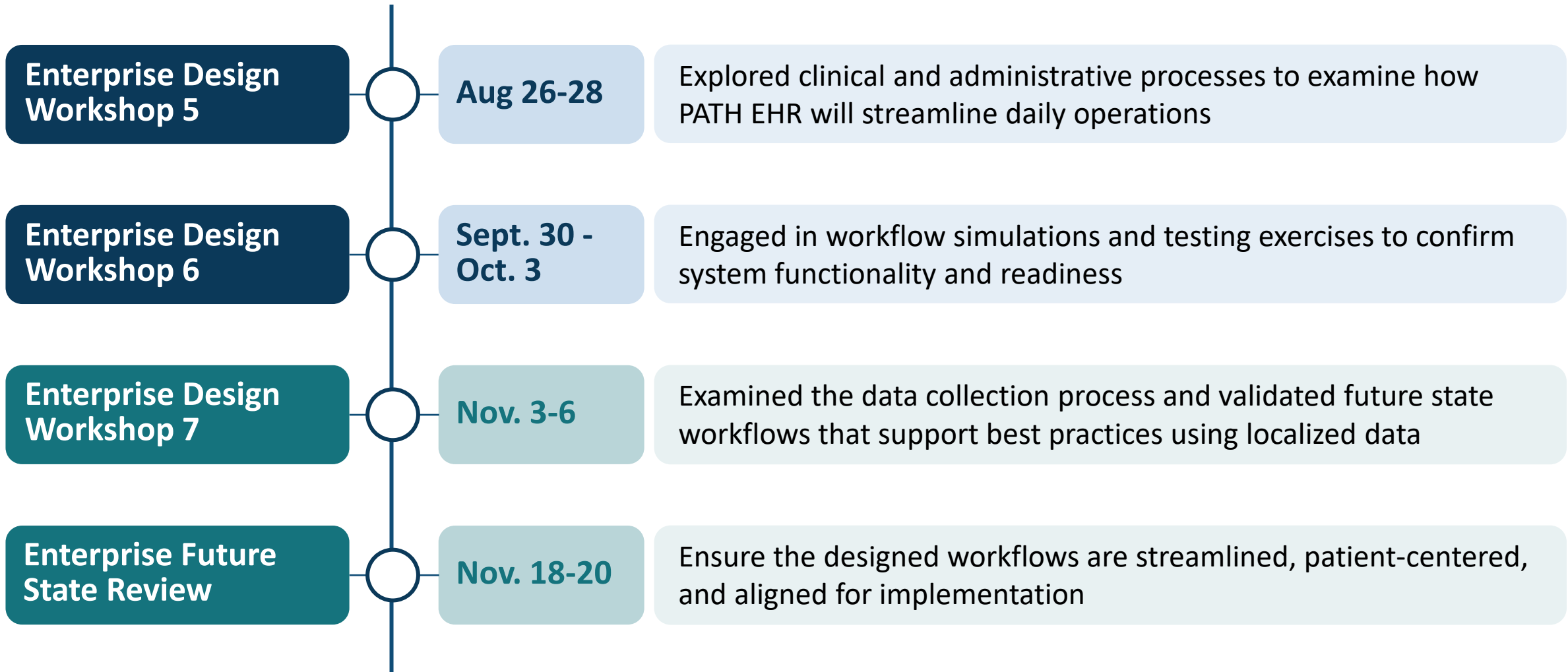
**Multi-tenancy allows multiple organizations to share a single software solution while keeping data secure.**



## Benefits

- Single patient health record
- Care coordination
- Sustainable
- Scalable
- Centralized maintenance
- Robust security
- Training and onboarding support

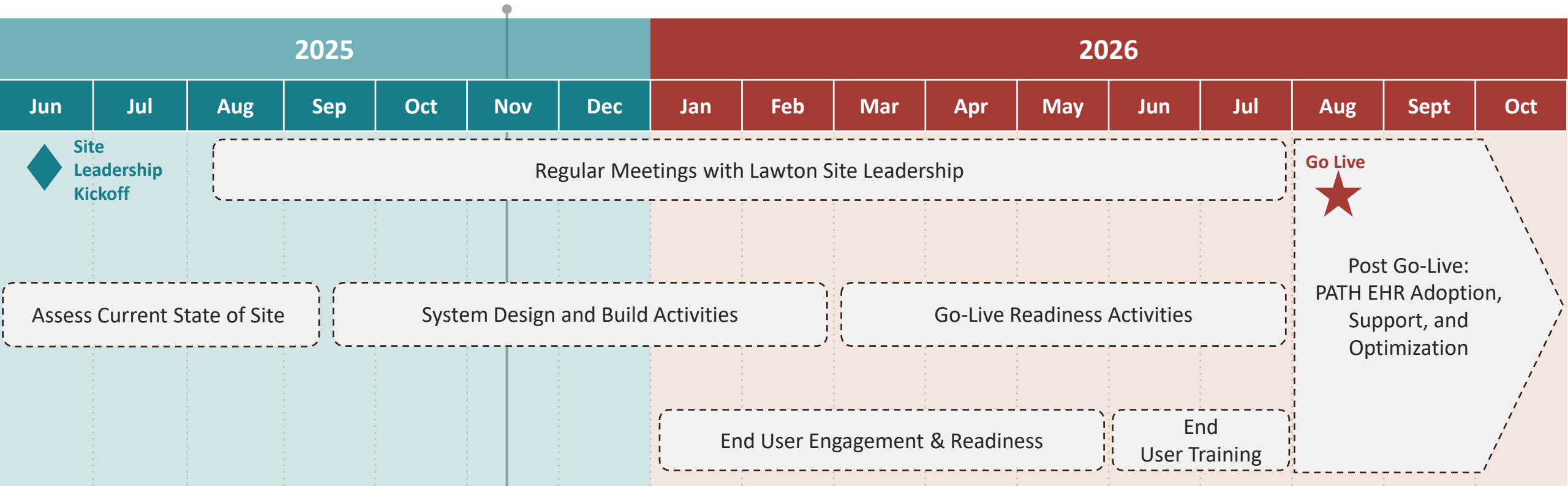
# Enterprise Recent Activities





# Lawton Deployment Timeline

The PATH Team is partnering with Lawton leaders and staff to ensure all key activities are complete to support Go-Live





Next Steps

# 1 Statement of Interest (SOI)



**Submit an SOI to indicate interest in partnering with the IHS on PATH EHR**



**Are you a leader within a tribal/urban Indian organization?**

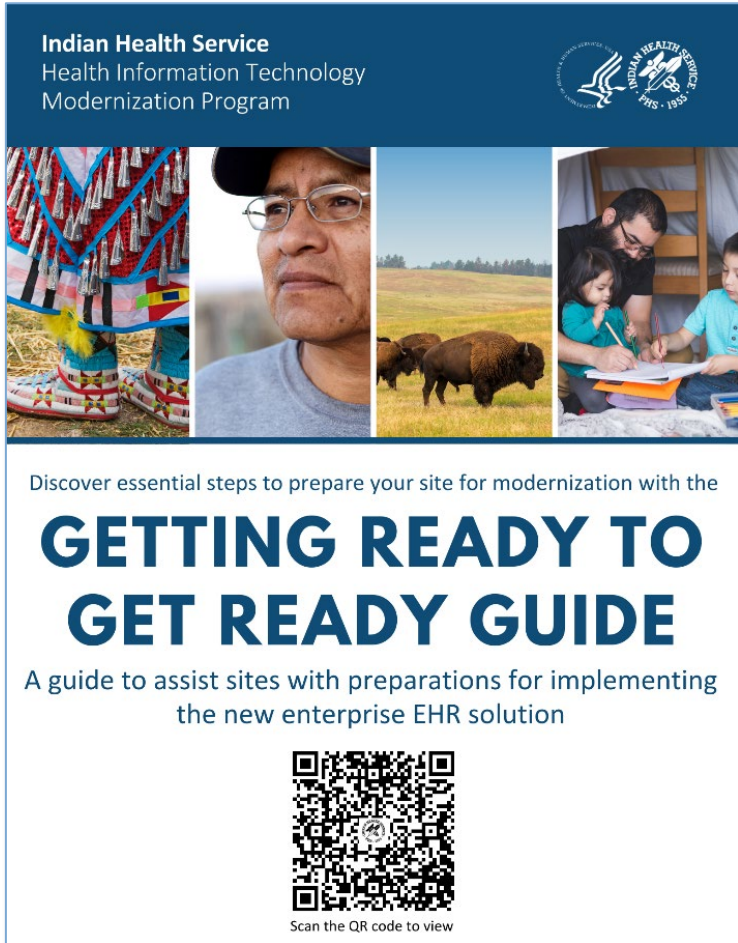
*Fill out the Statement of Interest and email it to [modernization@ihs.gov](mailto:modernization@ihs.gov)*

- The SOI is non-binding
- There is no deadline to submit an SOI
- The IHS IT Modernization Program will reach out to organizations that submit an SOI with additional information and to learn more about the site

# The Getting Ready to Get Ready Guide




Indian Health Service  
Health Information Technology  
Modernization Program



Discover essential steps to prepare your site for modernization with the

## GETTING READY TO GET READY GUIDE

A guide to assist sites with preparations for implementing the new enterprise EHR solution



Scan the QR code to view

The cover of the "Getting Ready to Get Ready Guide" features a blue header with the Indian Health Service logo and text. Below the header is a collage of four images: a traditional Native American headdress, a close-up of an elderly man's face, a herd of bison in a field, and a man and a child looking at a document. The main title "GETTING READY TO GET READY GUIDE" is in large, bold, blue letters. Below the title is a subtitle and a QR code with the instruction "Scan the QR code to view".

## Purpose

To share suggested actions sites can take today to prepare to implement the new enterprise EHR solution, PATH EHR



## Importance

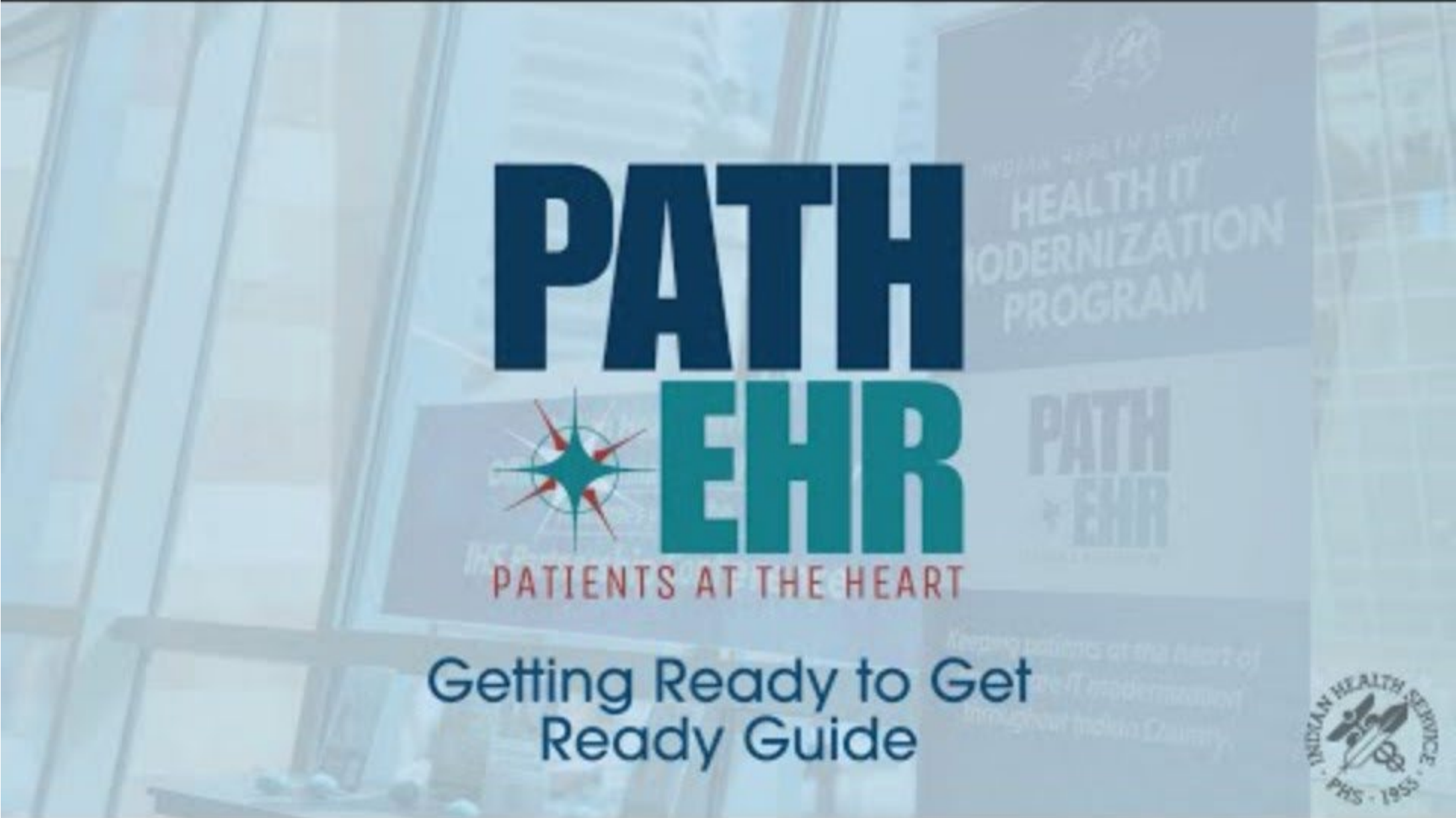
To help preemptively identify challenges that could impact a site's implementation of PATH EHR



## Benefit

To offer sites a head start to work through any challenges identified prior to implementation

# A Guide to Getting Ready to Get Ready for PATH EHR

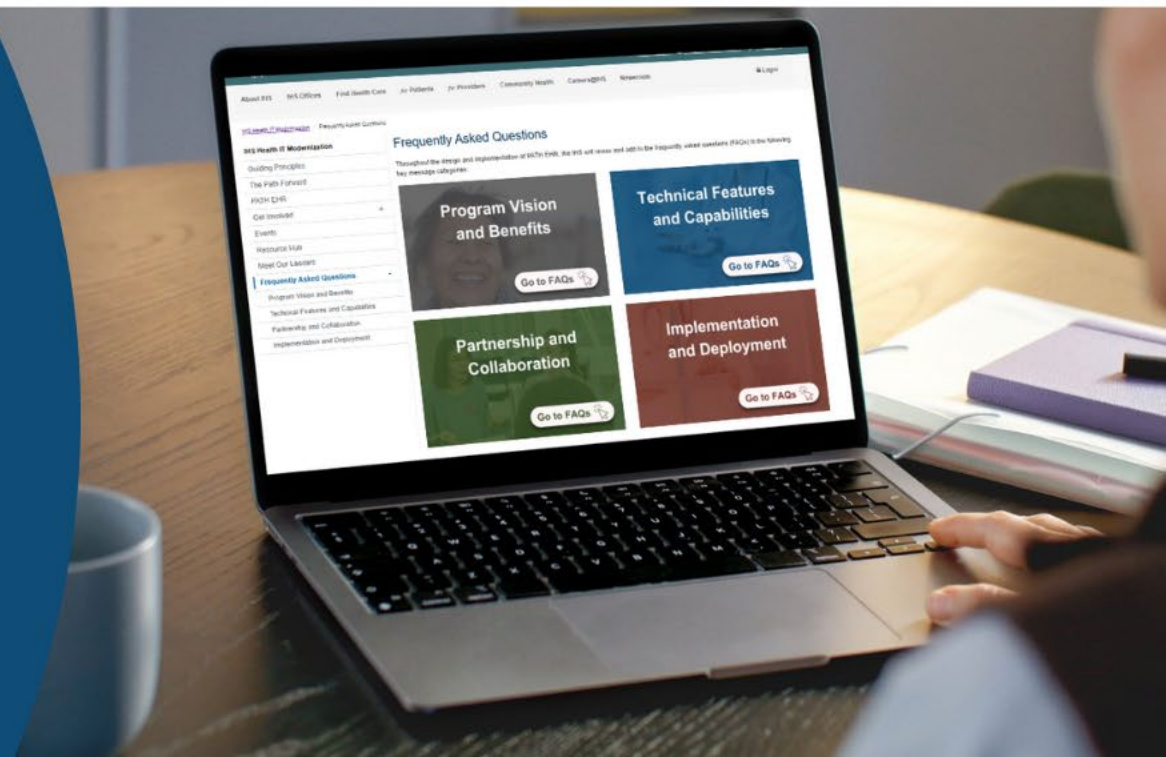


# FREQUENTLY ASKED QUESTIONS

<https://www.ihs.gov/hit/faq/>

## Explore Program FAQs related to:

- Program Vision and Benefits
- Technical Features and Capabilities
- Partnership and Collaboration
- Implementation and Deployment



Visit our  
**RESOURCE HUB**



Scan the QR Code



to Visit our Resource Hub!

*Easily access documents, presentations, and resources related to*  
**IHS Health IT Modernization Program**





## IHS Mission

To raise the physical, mental, social, and spiritual health of American Indians and Alaska Natives to the highest level



## IHS Vision

Build healthy communities and quality health care systems through strong partnerships and culturally responsive practices

## Questions?

Please email the Modernization Program at [modernization@ihs.gov](mailto:modernization@ihs.gov)

# Stay Connected with IHS

Stay informed on the Health IT Modernization Program at [www.IHS.gov/HIT](http://www.IHS.gov/HIT) or by following us on social media



Facebook



LinkedIn



X (formerly Twitter)

