

Tribal Leaders Diabetes Committee (TLDC) Update March 2026



California TLDC Representatives

Tribal Representative

Dominica Valencia

(Santa Ynez Band of Chumash
Mission Indians)

Federal Technical Representative

Glenna Moore, Area Diabetes Consultant

California Area Indian Health Service

Special Diabetes Program for Indians (SDPI)

SDPI Supports

- 310 SDPI Programs across all 12 Areas (IHS/T/U),
- ~780,000 AI/AN served each year
- **33 SDPI grantees in California**
- **CA SDPI Programs:**
 - 25 Tribal
 - 8 Urban

33 California SDPI Grantees



Current SDPI Grant Cycle

SDPI is in the 4th year of a 5-year grant cycle (Fiscal Year (FY 2023-2027), made up of 5 budget periods:

- FY 2023
- FY 2024
- FY 2025
- **FY 2026 (29th Year of SDPI)**
- FY 2027

2025 SDPI Funding

Date	Continuous Resolution (CR) Legislation	SDPI Funding
10/1/24-12/31/24	Consolidated Appropriations Act, 2024 (P.L. 118-42)	\$40M
1/1/25 - 3/31/25	The American Relief Act, 2025, (P.L. 118-158)	\$39M
4/1/25 – 9/30/25	Full-Year Continuing Appropriations and Extensions Act, 2025 (P.L. 119-4)	\$80M
	Total	\$159M

2026 SDPI Funding

Dates	Continuing Resolution Legislation	SDPI Funding
10/1/25 – 1/30/26	Continuing Appropriations, 2026 (H.R. 5371)	\$53M

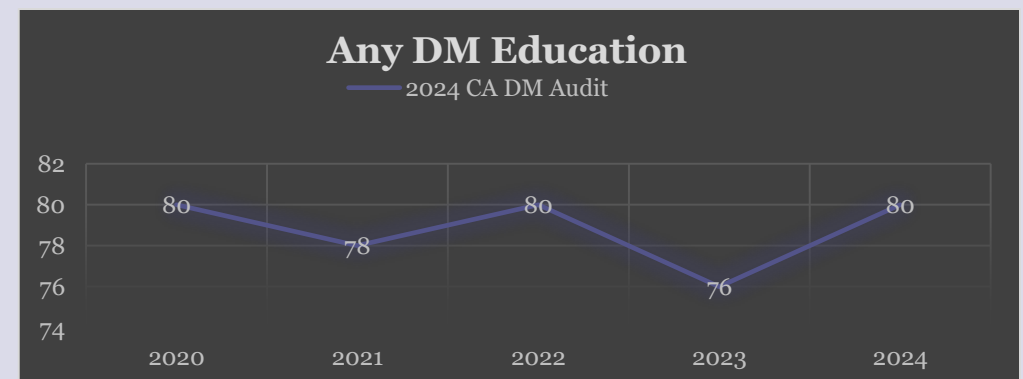
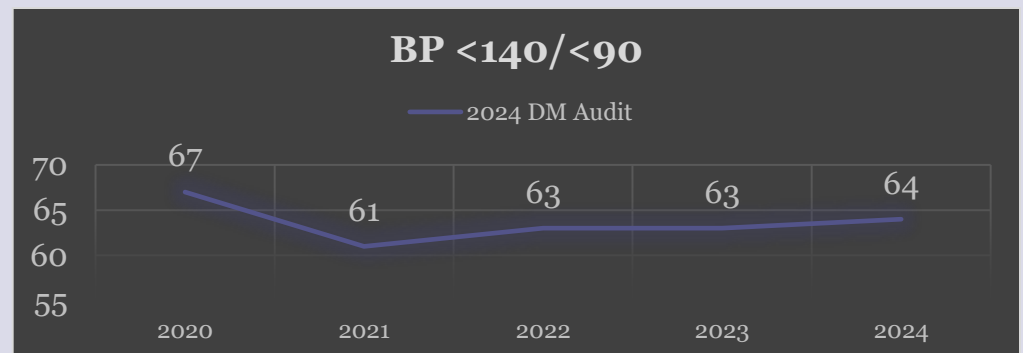
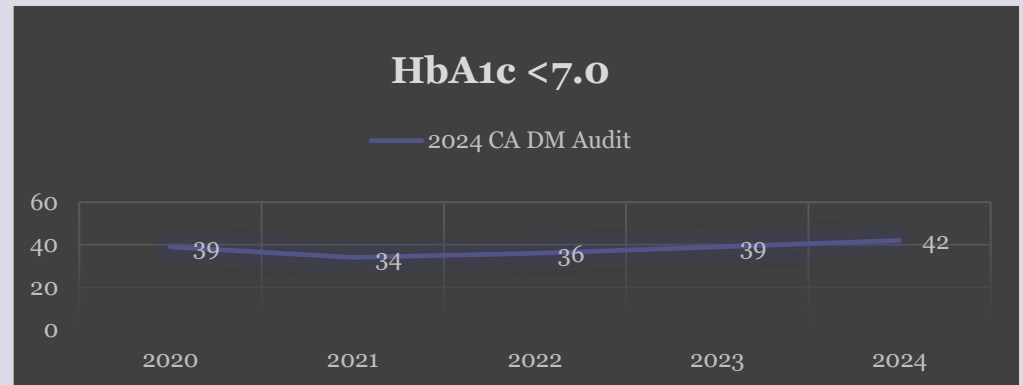
- On February 3, 2026, Congress passed a three-bill appropriations minibus for fiscal year (FY) 2026.
- The bill includes **\$200 million** for the Special Diabetes Program for Indians (SDPI), which represents a \$41 million increase.

SDPI-Data Driven Outcomes

The Diabetes Care and Outcomes Audit (Audit) was initiated in 1986 in conjunction with the IHS Standards of Care for Diabetes to assess care and health outcomes for AI/AN people with diagnosed diabetes. I/T/U health care facilities nationwide participate in this process, submitting data on more than 40 outcome measures each year

SDPI Outcomes System (SOS)

Each SDPI site selects and implements one Diabetes Best Practice. The Diabetes Best Practices focus on improving various aspects of diabetes treatment and prevention – for example, nutrition education or blood sugar control. To assess improvement, each Best Practice includes one Required Key(RKM) Measure that sites track and report on annually via the SDPI Outcomes System (SOS).



2024 Highlights



Mean A1C 7.72 (decreased 12% since 1997)

61% had A1C <8% (increased 5.3% since 2014)

19% had A1C >9% (decreased 8% since 2014)



Blood Pressure (BP) control

69% had mean BP <140/<90 (6% increase since 2008)



Cholesterol

Mean total cholesterol was 163 (20% decrease since 1998)

Mean LDL cholesterol was 86 (28% decrease since 1998)



Education was documented for a majority of people with diabetes within the Audit year

58% Diabetes Education

49% Physical Activity

48% Nutrition

74% Any Education



Annual Exams (rates rebounding since 2021)

36% Dental (27%)

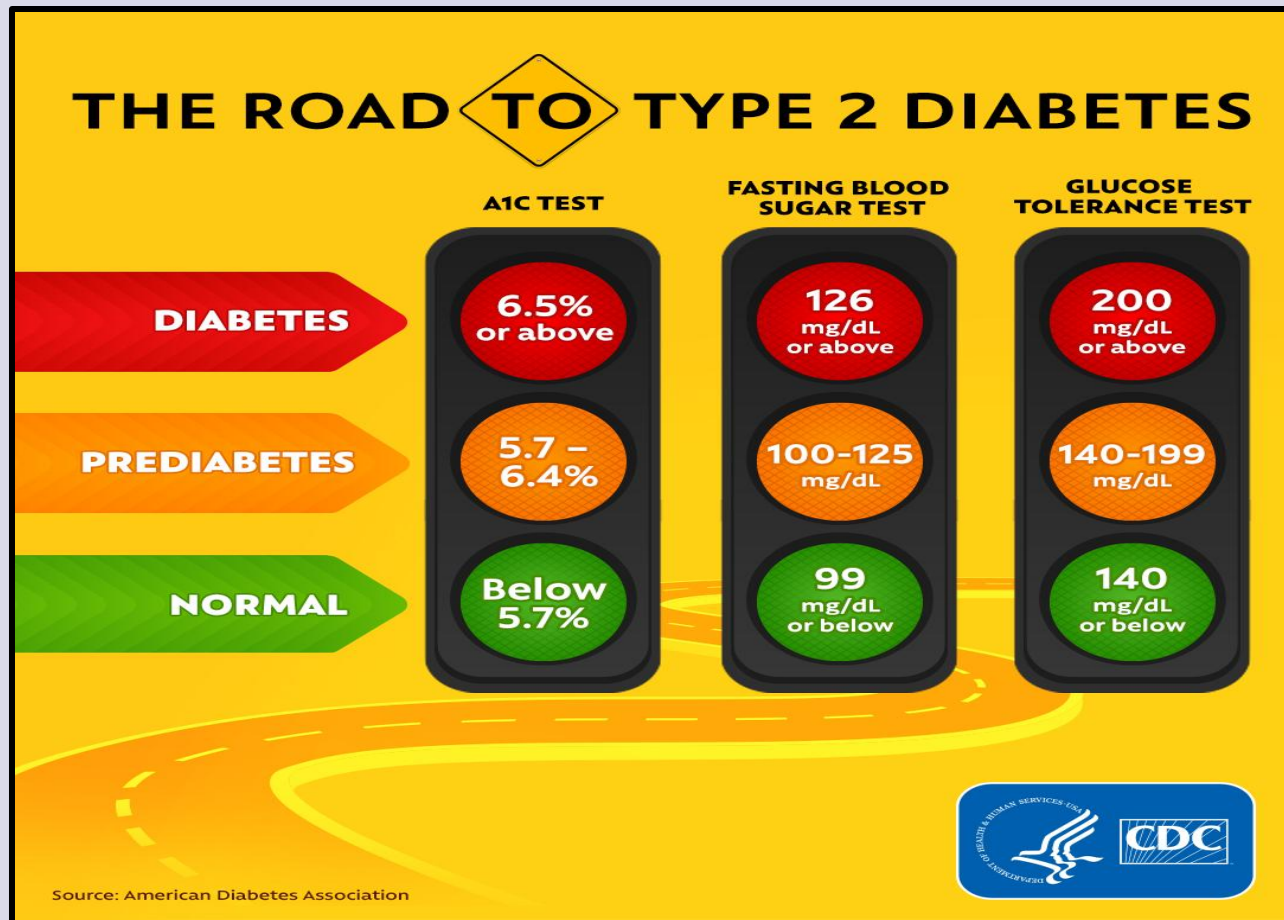
55% Retinal exam (42%)

50% Complete foot exam (39%)

The National Diabetes Statistics Reports includes an age-adjusted prevalence of 10.1% for US adults, as compared to a prevalence of 13.6% for American Indian/Alaska Native (AI/AN) adults. Encouragingly, the prevalence in AI/AN adults has decreased significantly from 15.4% in 2013.

American Indian Alaska Native (AI/AN)	Non-AI/AN
13.6%	10.1%

We Still Have Work To Do



California Area SDPI

- 20 on-site visits
- Technical Assistance for DM Audit, grant activity and grant requirements
- Virtual sessions with financial and grants management staff for budget issues
- Individual and group virtual sessions for new coordinator/staff orientation



California Medical Best Practices/Diabetes Day 2025



Youth Activity



The TLDC:

- Reviews information on SDPI progress
- Quarterly meetings to work on current and future issues:
 - March 2025 (cancelled)
 - Jun 2025- virtual
 - September 25- Arlington, VA
 - December 25- virtual
- Makes recommendations to the IHS Director on diabetes-related issues
- Meets with Congressional representatives about impact of diabetes in Indian Country and critical need for continued and increased funding for SDPI

For more information about SDPI:

☐ California Area Diabetes Program, IHS
Glenna Moore, MS, RD
California Area Diabetes Consultant (ADC)
Glenna.moore@ihs.gov

☐ Division of Diabetes Treatment & Prevention, IHS
<https://www.ihs.gov/diabetes/about-us/ihs-division-of-diabetes-treatment-and-prevention/>

Thank You!

