



Immunizations: Preventing Disease, Saving Lives


Amy V. Groom, MPH

IHS Immunization Program Manager



Objectives

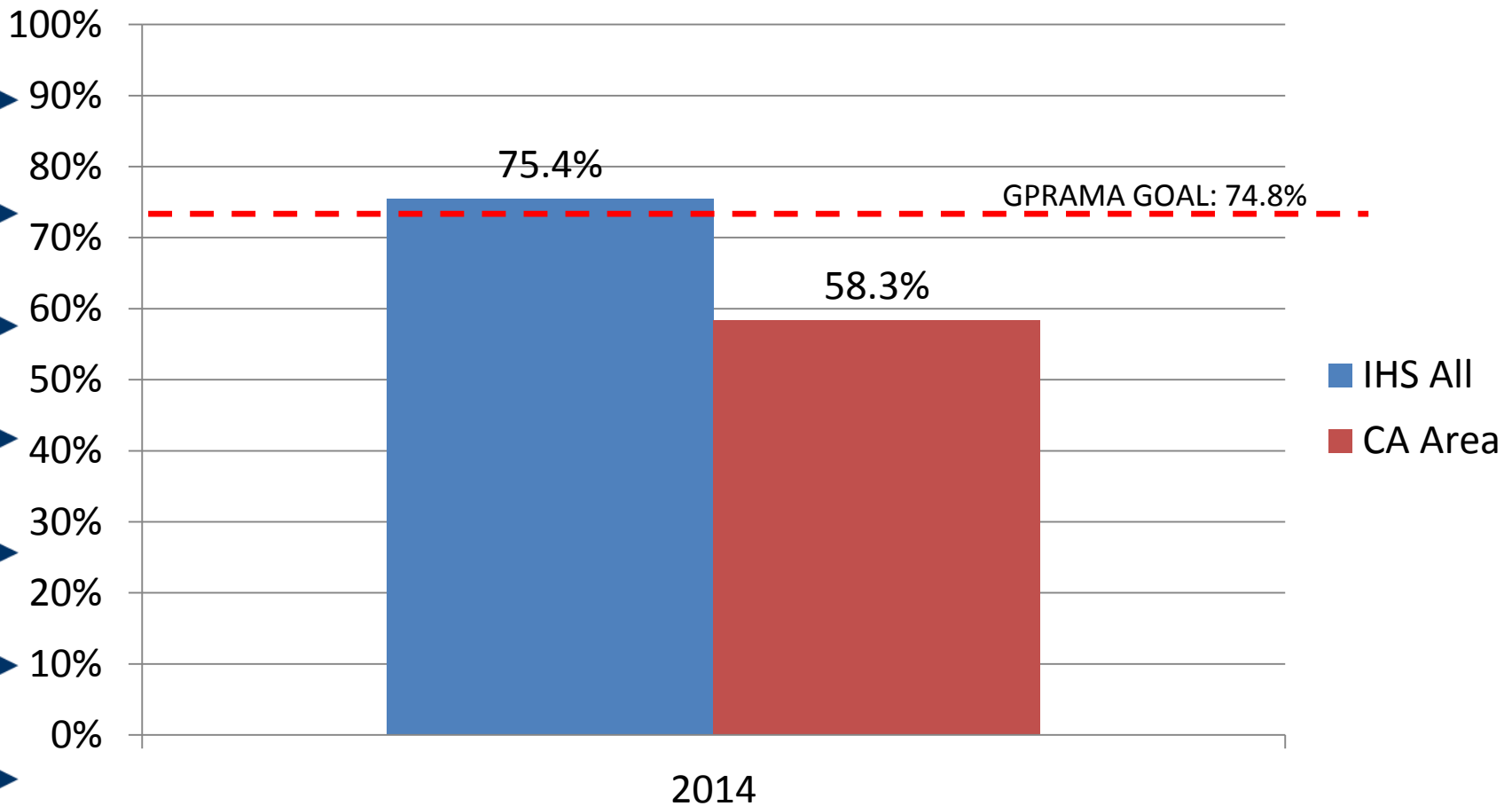
- Describe progress towards meeting IHS GPRA Immunization measures
- Identify 2 strategies to improve immunization rates
- Access tools in the RPMS immunization package to support immunization activities



FY 2015 GPRA/GPRAMA Immunization Measures

- Childhood Immunizations
 - 4313314 coverage among children 19-35 months
 - Target: 73.9%
- Adult Immunizations
 - Pneumococcal vaccination among adults 65 years+
 - PPSV23 or PCV13 vaccination on or after age 65 years
 - Target: 85.7%
 - Influenza vaccination among adults 65 years+
 - Target: 67.2%

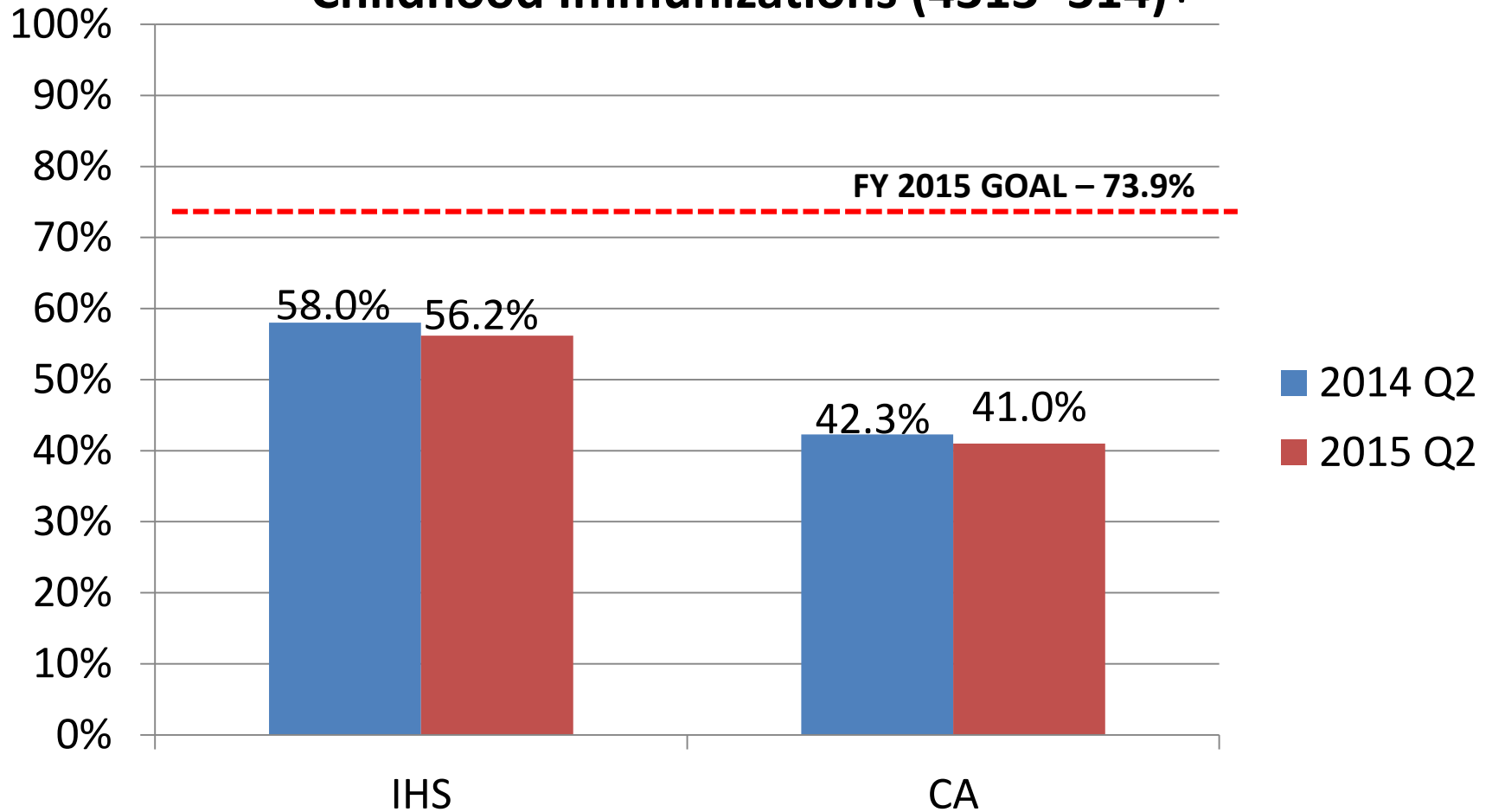
FY 2014 GPRAMA Childhood Immunization*



*4313(4)314 – Measure includes 3 OR 4 Hib, depending on brand

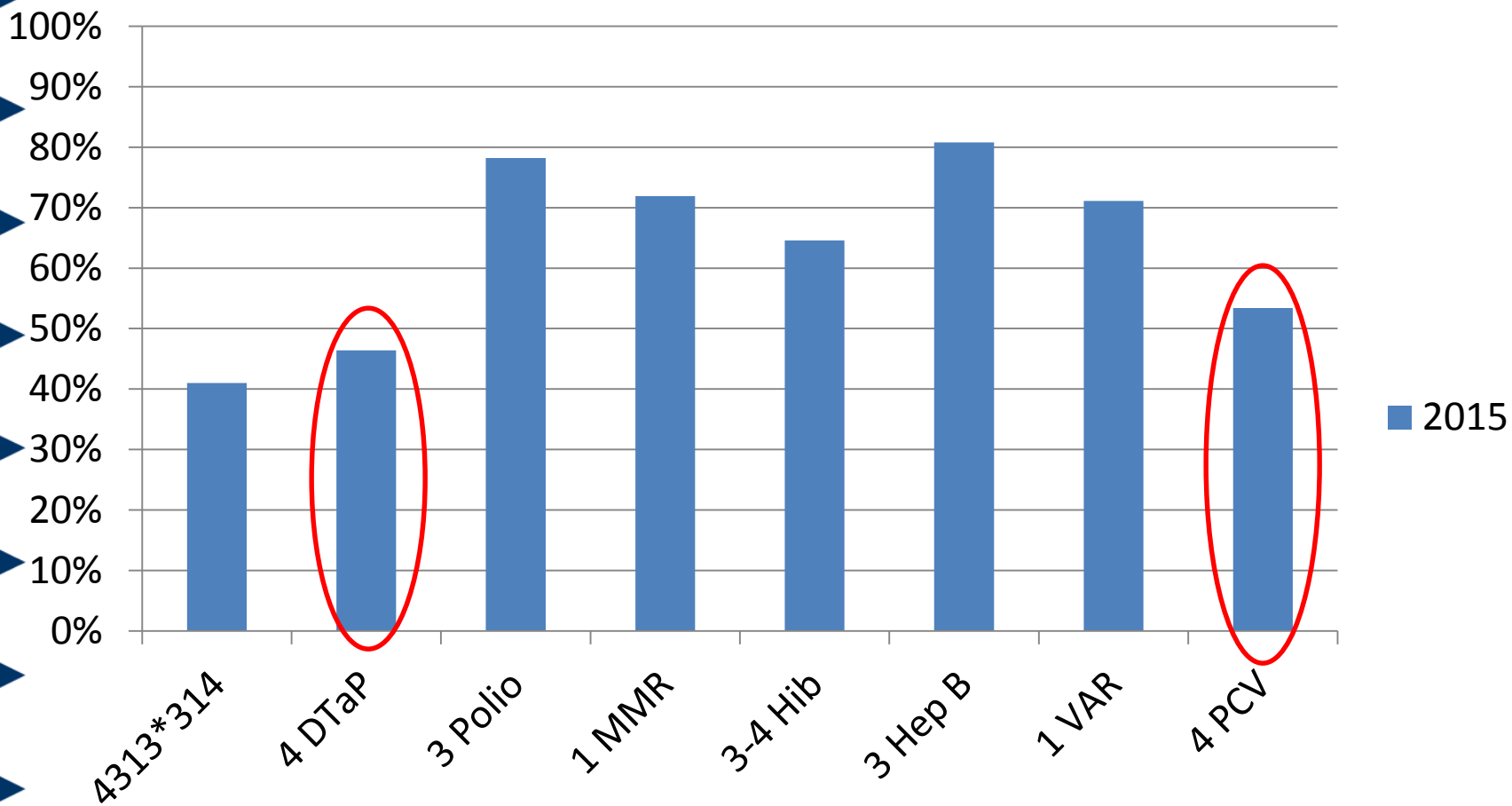
CRS 2014 vs. 2015 – Quarter 2

Childhood Immunizations (4313*314)†



†4 DTap, 3 Polio, 1 MMR, 3/4 Hib, 3 Hep B, 1 Var, 4 Pneumococcal conjugate
Based on CRS Quarter 2 Data

CA CRS 2015 Q2 Results





If the child needs less than 4 doses because they started late, why do they need 4 doses for GPRA?

- The purpose of GPRA is NOT “Is the child up to date TODAY?”
- GPRA measures how we did at MEETING THE RECOMMENDATIONS
 - E.g. did the child get the vaccines as recommended
- PCV recommendation: 4 doses at 2,4,6 months, booster at 12-15 months



PCV and GPRA

- If start late, or get off schedule, may need fewer doses,

HOWEVER

- If doses \neq 4, child will show up as “Not Current” in RPMS 2 year old report

AND

- Child will not meet the GPRA 4313*314 measure



Reasons for Children Not Up to Date

- Start late/get off schedule
- Concerns about simultaneous administration
 - Provider
 - Parents
- Receiving care elsewhere (Missing data)



Alternative Schedules

- Study by Kempe et al., “Physician response to parental requests to spread out the recommended vaccine schedule”*
 - In a typical month, 93% of surveyed providers indicated they receive requests for alternative schedules
 - Majority believe spreading out schedule puts child at risk for disease (87%) and is more painful (84%)
 - However – 74% of providers said they acquiesce at least some of the time
 - To build trust with the patient
 - Fear they will leave the practice

* Kempe A et al. Physician response to parental requests to spread out the recommended vaccine schedule. *Pediatrics*; 2015.



The Importance of Provider Recommendations

- Pregnant women more likely to get influenza vaccine if provider recommends
 - Even among patients who have concerns



Strategies

- **Reduce Missed Opportunities**
 - Done by One schedule
 - Accelerated childhood schedule
 - Consider forecasting on minimum intervals
 - Vaccinate at EVERY visit
 - Simultaneous administration of all recommended vaccines!!!
 - Standing orders
- **Use Reminder Recall**
 - RPMS letters, postcards/reminders
- **Monitor Coverage**
- **Educate educate educate**
 - Leverage partnerships with other programs and the community to get the message out about the importance of vaccination
- **Use state/county registry to look up data**

Your Secret Weapon





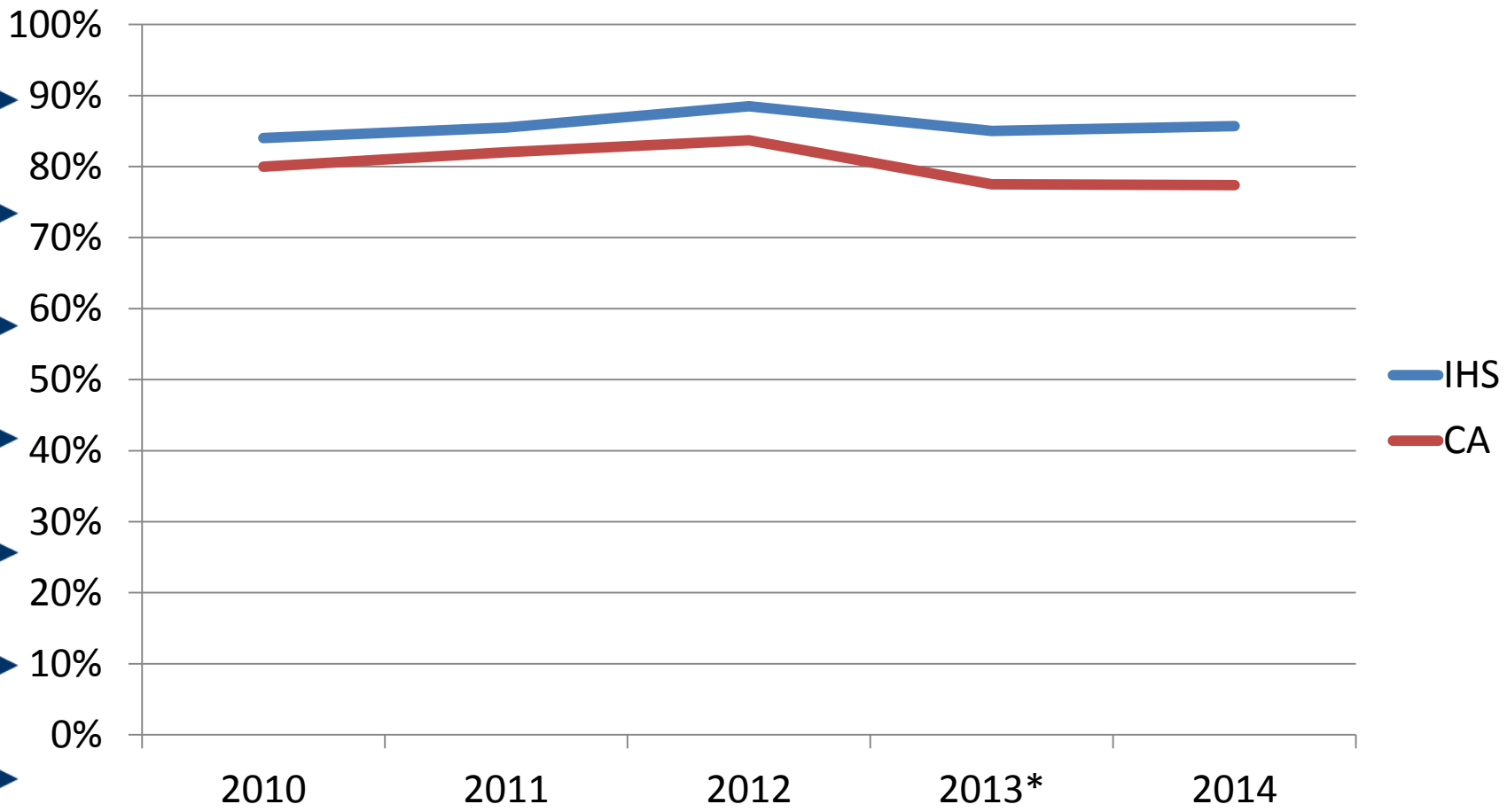
RPMS 3-27 month old immunization report

- Allows real-time monitoring of immunization coverage
- Identifies children falling behind while there is still time to do something about it!
- High coverage in 3-27 month old report = High 2 year old coverage = High GPRA measure coverage



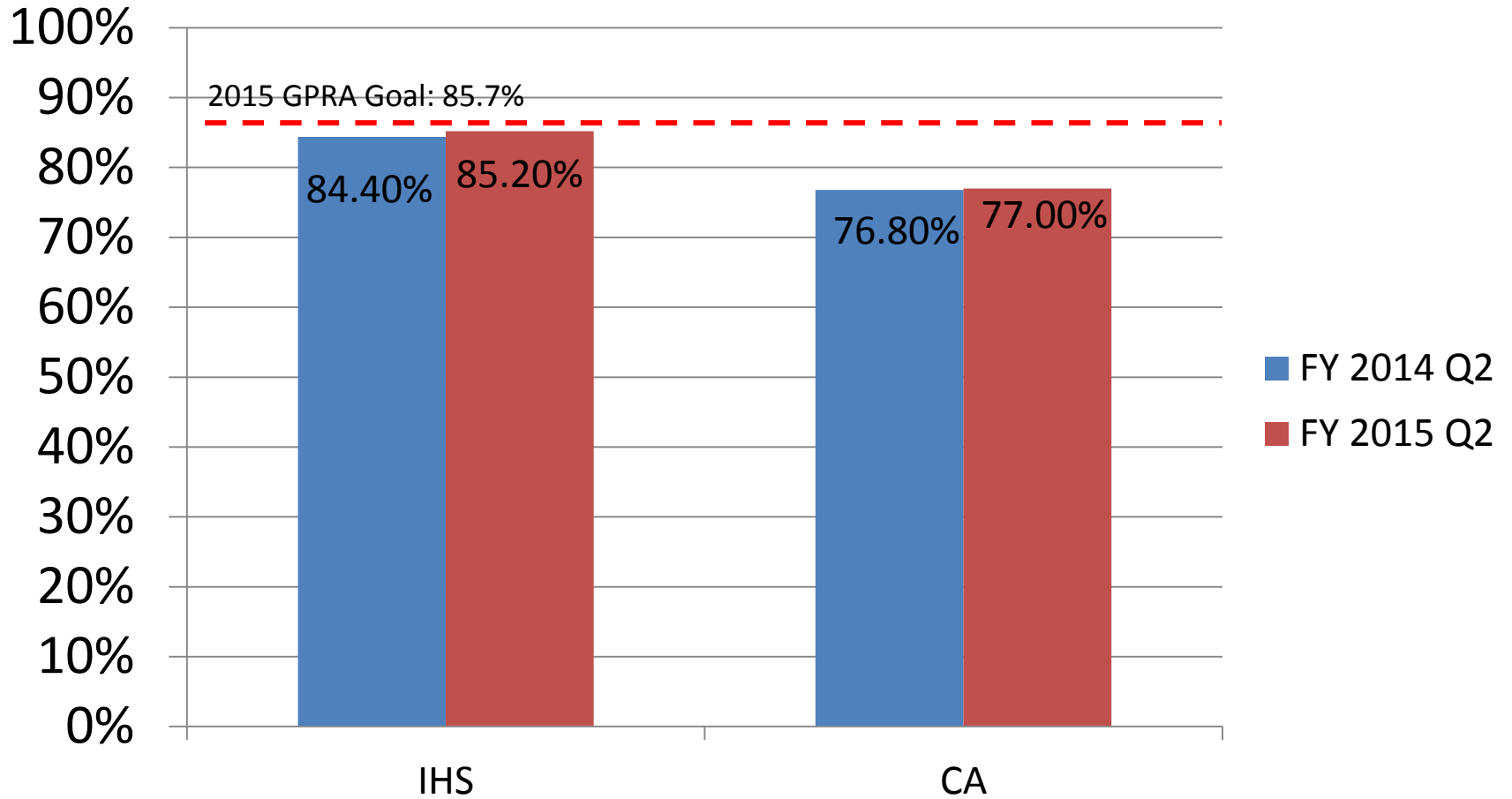
ADULT IMMUNIZATION MEASURES

Pneumococcal Vaccine 65+ Years

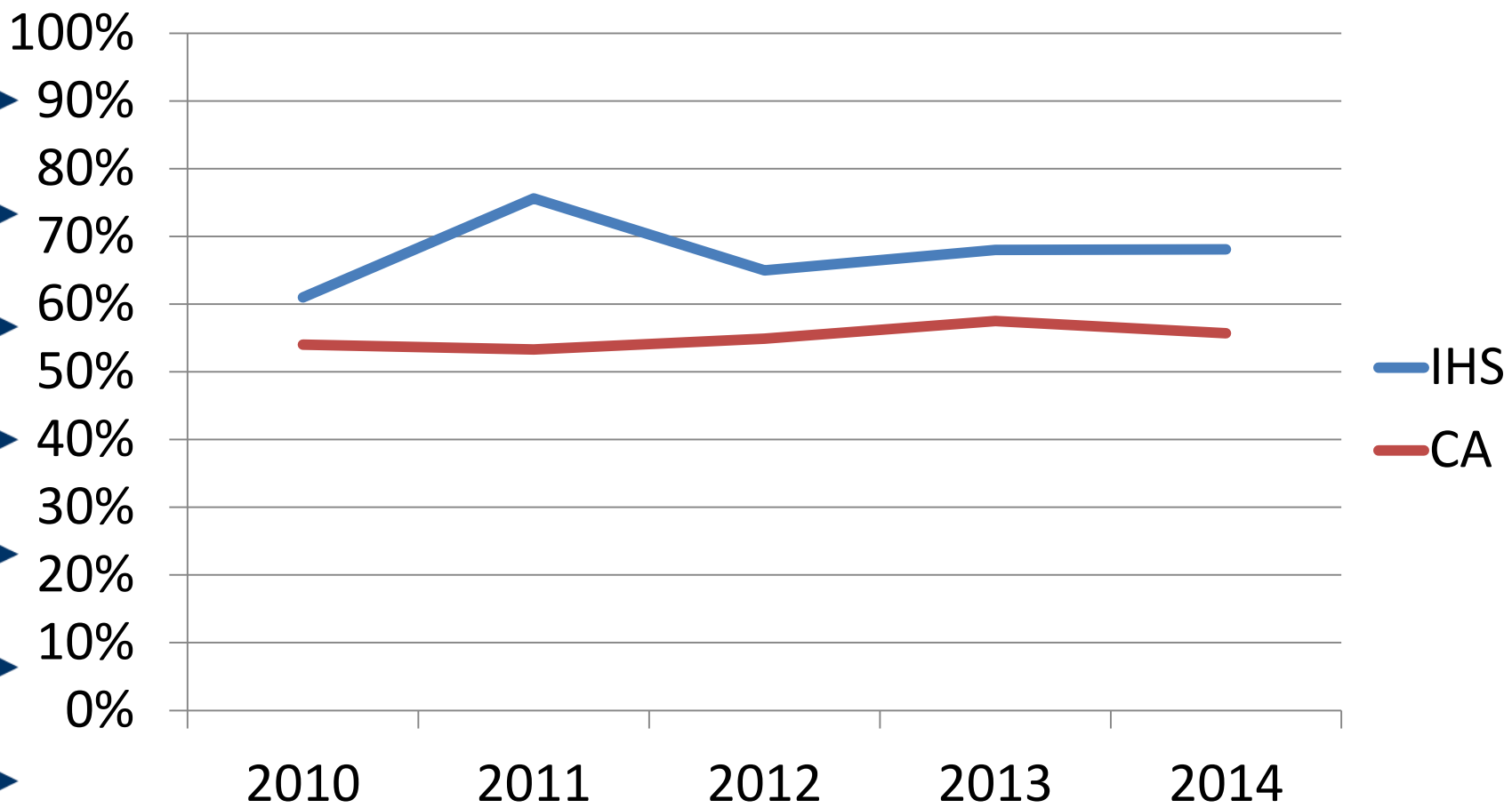


Change in measure for 2013 data – Pneumo at or after 65 years of age

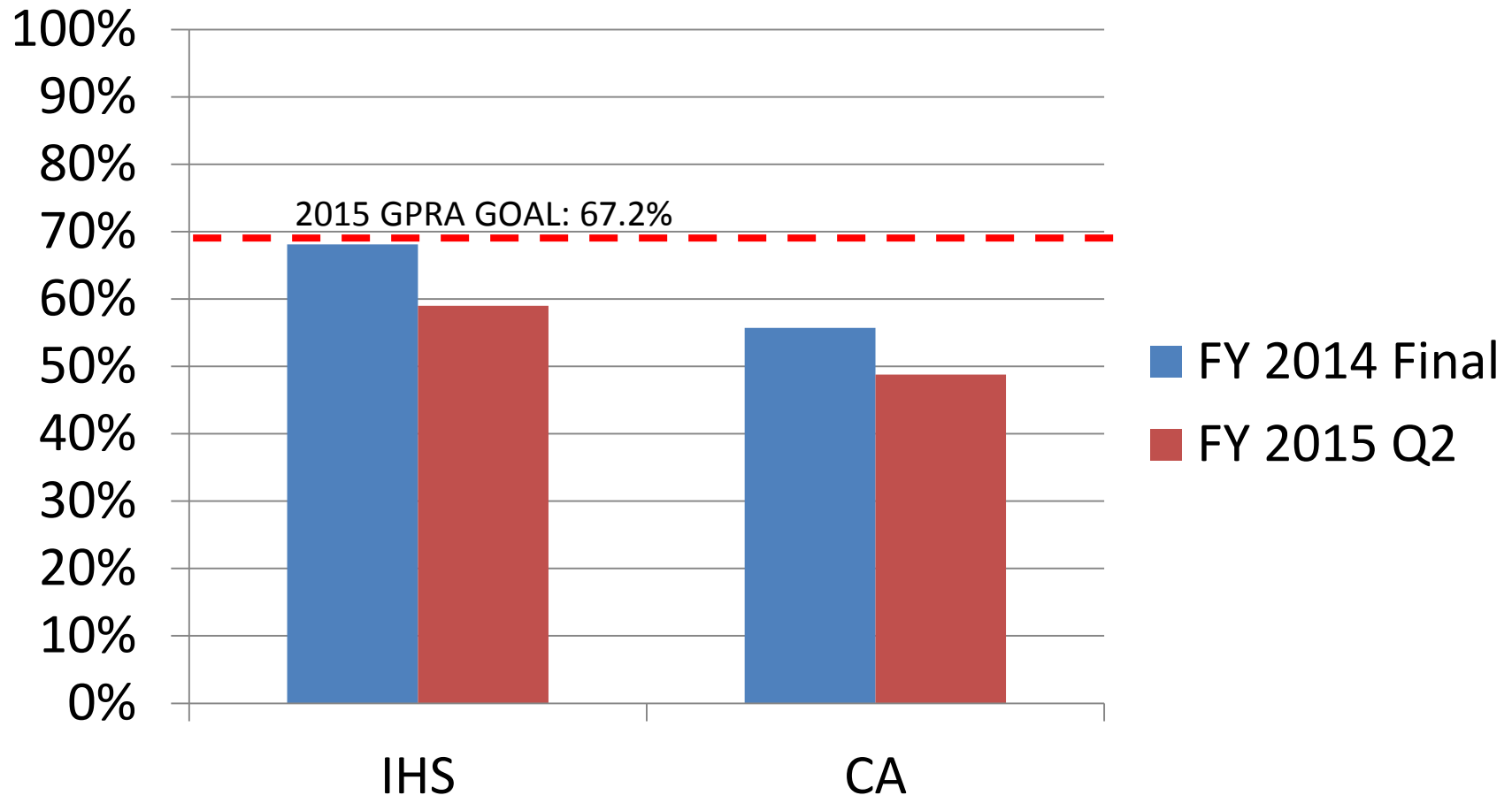
CRS - Pneumococcal Vaccine



GPRA Influenza Vaccine 65+ Years



CRS - Influenza Vaccine 65+ Years



THE FUTURE



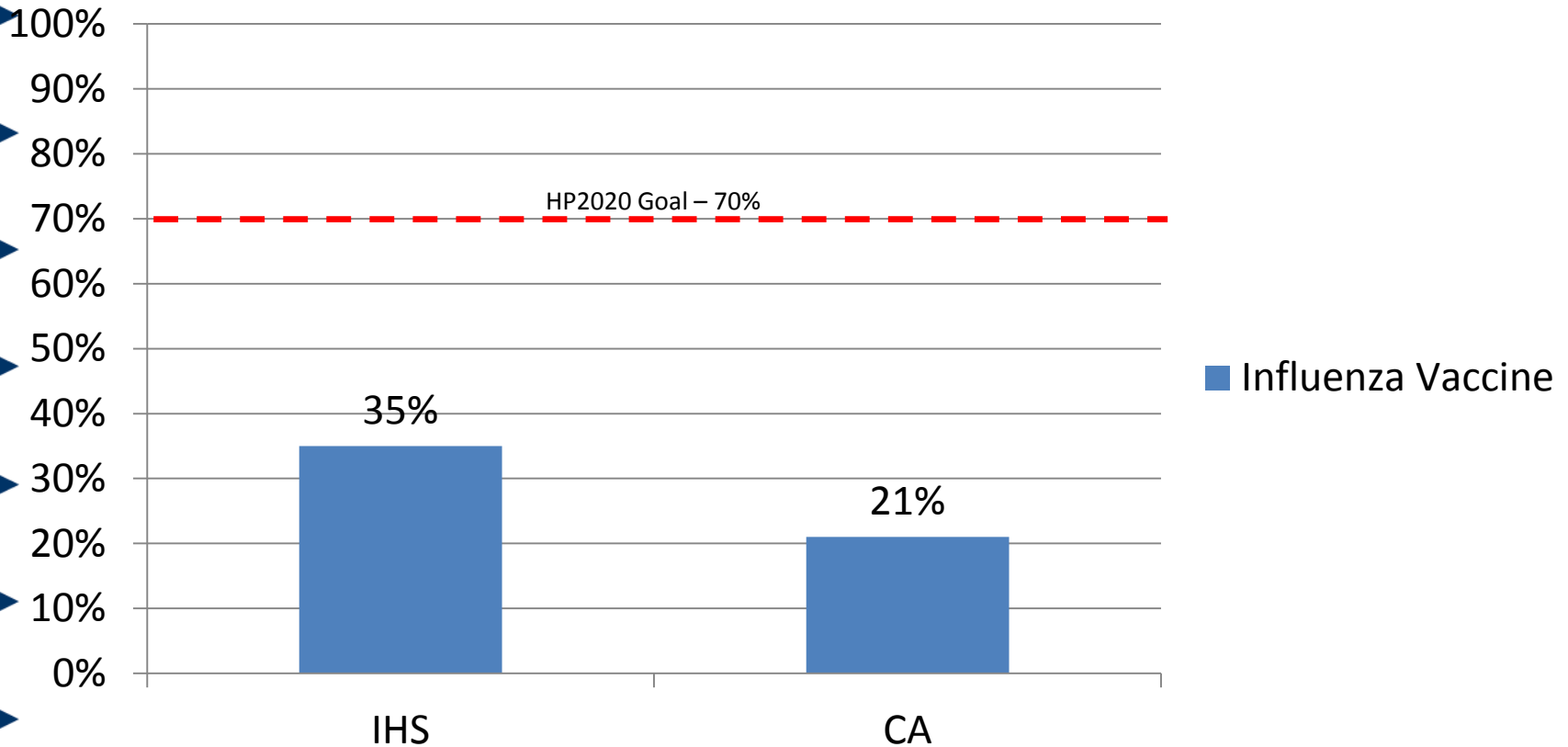


New for FY 2016

- GPRA/CRS
 - New influenza measure for FY 2016
 - FY 2016 will be baseline data year for new influenza measure for influenza vaccine coverage among ALL patients 6 months and older

CA Influenza Vaccine Coverage March 31st, 2015*

Influenza Vaccine



*Source: RPMS Immunization Quarterly Report Data.



Tools to get there

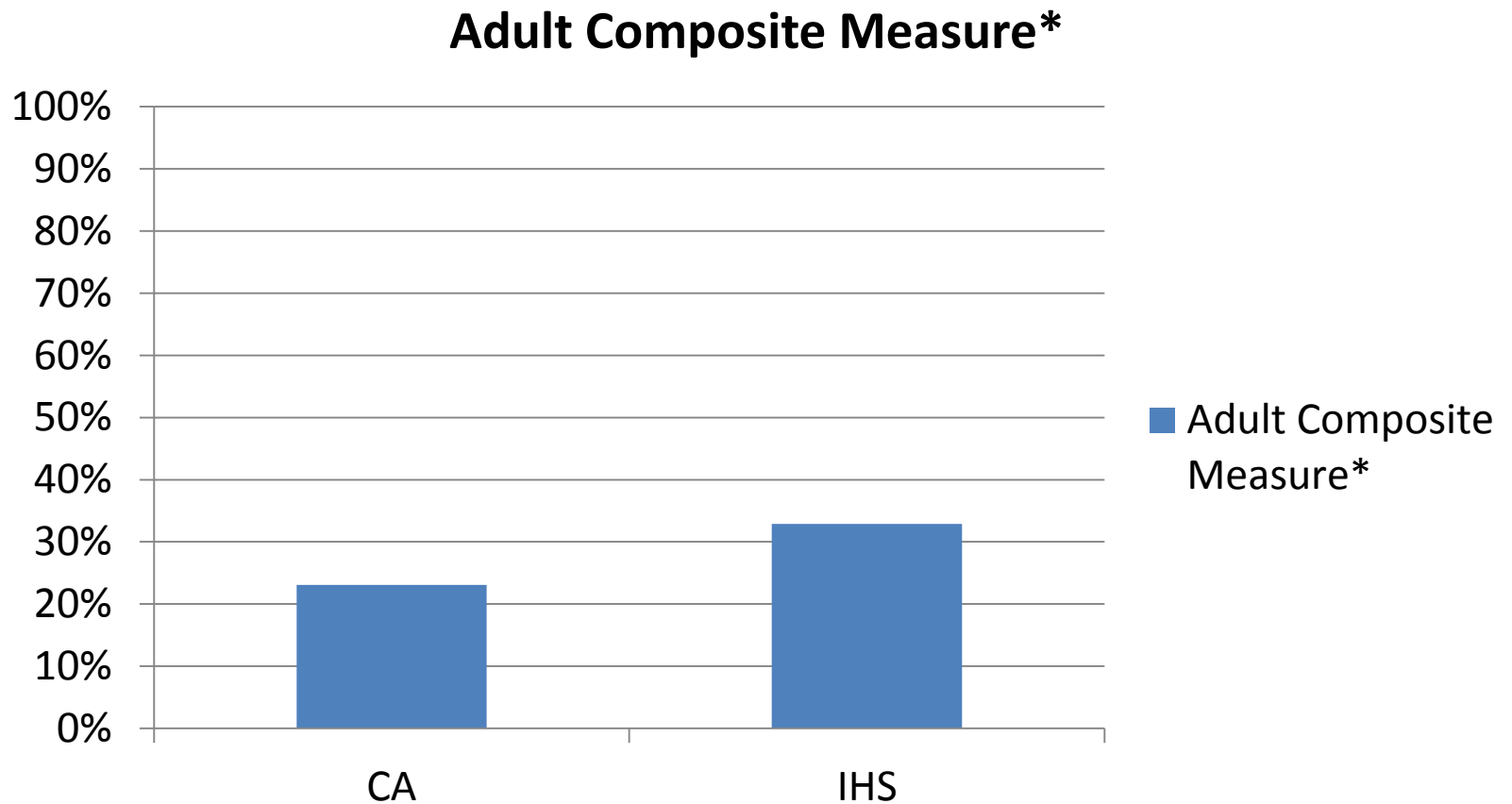
- Immunization package reports
 - Influenza Report
 - Run every week during flu season
 - Post coverage for all to see – establish goals
 - Review patients “Not Current”
 - Lists and Letters
 - Generate lists of patients due for flu, PPSV23 at 65 years
 - Conduct Reminder/Recall
 - Community Education
 - Check out free resources at www.cdc.gov/flu
 - Radio PSAs in Lakota, Yupik and Navajo
 - AI/AN Posters, Infographics



Other Initiatives

- Mandatory influenza vaccine for healthcare personnel
- Developmental Measures
 - Adult Composite Measure
 - Adults 19 years and older up to date with all age appropriate vaccines
 - Tdap, Zoster, PPSV23, Flu and
 - » Tdap+Zoster+PPSV23+Flu
 - » Tdap+Zoster+PPSV23
 - Maternal Immunization Measure
 - Tdap, Flu, and Tdap+Flu for pregnant women

Adult Composite Measure FY 2014



* Proportion of adults 19 years and older who received age appropriate vaccines Tdap, Zoster, PPSV23 and Influenza vaccine

Resources

- IHS Vaccine Preventable Diseases website - www.ihs.gov/epi
- Immunization Action Coalition – www.immunize.org
- CDC Influenza website – www.cdc.gov/flu

Seasonal Influenza Vaccination Campaign Resources
For American Indians/Alaska Natives

FREE RESOURCES are available to the general public, partners, and organizations:

- Learn more about the National Influenza Vaccination Disparities Partnership (NIVDP) by visiting the CDC's flu partner web page at <http://www.cdc.gov/flu/partners>
- For more information, please contact: fluinbox@cdc.gov

MATTE ARTICLES AND FACT SHEETS

Download fact sheets which explain what the flu is, who should get a flu vaccine and why, and how individuals can take preventive actions to protect themselves, their families and their communities.

What You Need to Know

1 Why get vaccinated?

Influenza ("the flu") is a contagious disease that spreads around the United States every winter, usually between October and May.

Flu is a serious illness, and is spread most often through coughs and sneezes. The risk of getting flu is higher in some settings and includes:

- Schools and day care centers
- Long-term care facilities
- Health care settings
- Crowded public places
- Public transportation
- Large group settings

Free Order: <http://www.cdc.gov/pubs/CDCInfoOnDemand.aspx>
Free Download: <http://www.cdc.gov/flu/freeresources/print-native.htm>
Order your color copies free of charge (on select materials)

COMMUNITY RESOURCE KIT

The NIVDP Kit has all the information you need to become better informed about influenza and the influenza vaccine. It will help you rally trusted leaders and community groups from various sectors in support of effective, annual influenza vaccination campaigns.

Free Download:
<http://www.cdc.gov/flu/pdf/nivdp-resource-kit-2014.pdf>

POSTERS, FLYERS AND BROCHURES

Download these posters and flyers to distribute to your community partners, patients, and health centers. The brochure answers common questions about flu symptoms, the flu season, and vaccination locations.

E-NEWSLETTER

The National Influenza Vaccination Disparities Partnership (NIVDP) is comprised of multi-sector partners who work to promote flu vaccination among underserved populations. The monthly newsletter highlights partner activity.

Influenza News