

# **Indian Health Service (IHS) Electronic Dental Record (EDR) Synchronizing Registry Customizations**

**Version 1.0  
9/25/2014**

Henry Schein Practice Solutions  
1220 South 630 East  
American Fork, UT 84003

## Introduction

Dentrix Enterprise uses registry values to store user-specific preferences as well as the location of the database file. Each Windows user on every client workstation that has Dentrix Enterprise installed must have the most up-to-date settings to use Dentrix Enterprise. If a user does not have access to the files that are required to synchronize the customizations and cannot perform the synchronization, he or she will receive errors when trying to log on to Dentrix Enterprise.

This document provides instructions for centralizing the registry values and creating shortcuts on the user’s desktop to synchronize those customizations efficiently; you have to manage only a single file as opposed to a file for each workstation. The installers will assist you in building the infrastructure for synchronizing the customizations. The Dentrix Enterprise trainers will set up the customizations initially so that users can apply them when they start using Dentrix Enterprise.

If you run into any problems deploying the registry files for Dentrix Enterprise users, or need clarification on this document, contact a Dentrix Enterprise Support representative.

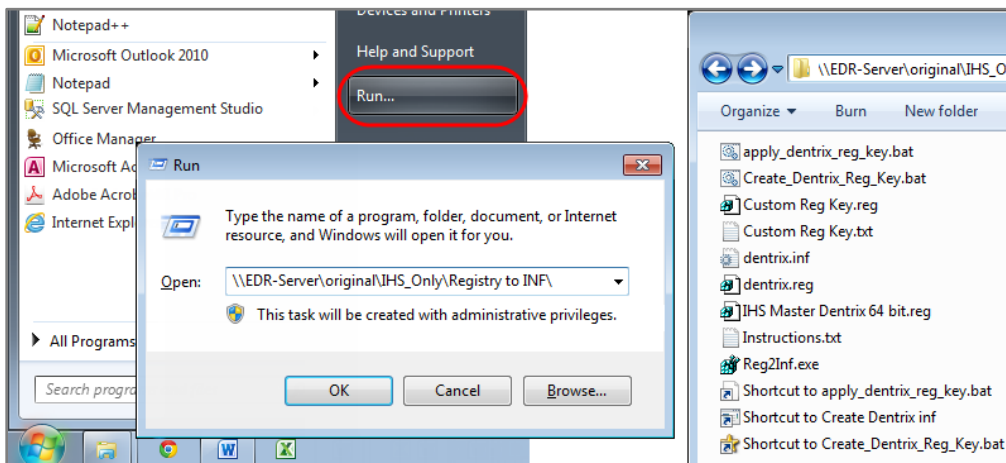
## Initially Applying or Updating Customizations

To initially set up and apply or to update and apply the necessary customizations for implementing Dentrix Enterprise at an IHS site, do the following:

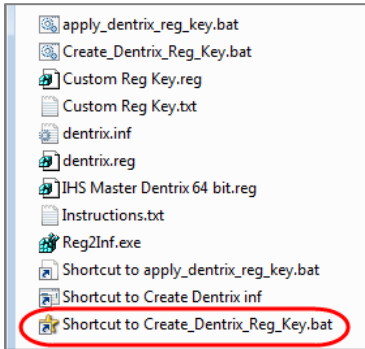
1. From a client workstation, make the necessary IHS customizations to Dentrix Enterprise.
 

**Important:** Do not make the customizations from the server because, if you copy the registry settings from the server to the client workstations, the network paths for the client workstations will be incorrect.
2. From the same client workstation, export the customizations:
  - a. Open the **Registry to INF** folder (which should be located in a shared location on the network, such as a folder on the database or image server).

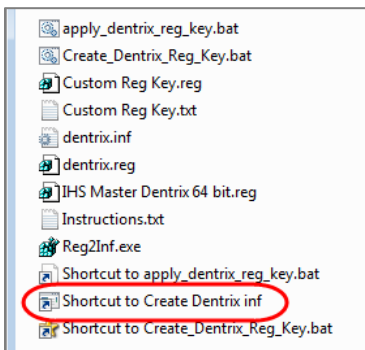
For example, click the Windows **Start** button, click **Run**, type \\EDR-Server\original\IHS\_Only\Registry to INF\, and then click **OK**.



b. Double-click **Shortcut to Create\_Dentrix\_Reg\_Key.bat**. The **dentrix.reg** file is created.

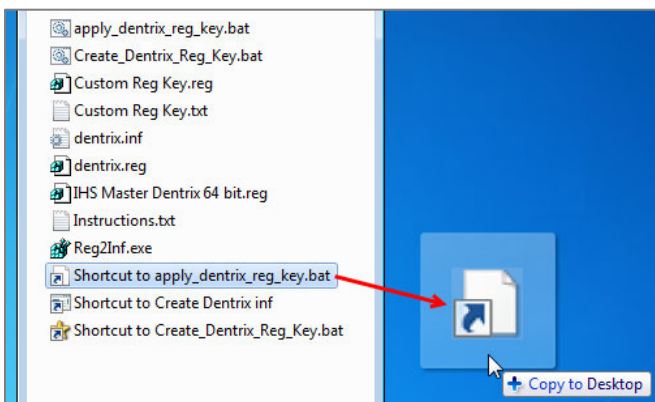


c. Double-click **Shortcut to Create Dentrix Inf**. The **dentrix.inf** file is created. (For “Federal” sites, you must complete this step. For “Tribal” sites that want to use the .reg file that you created in step b to apply the customizations, this step is optional.)

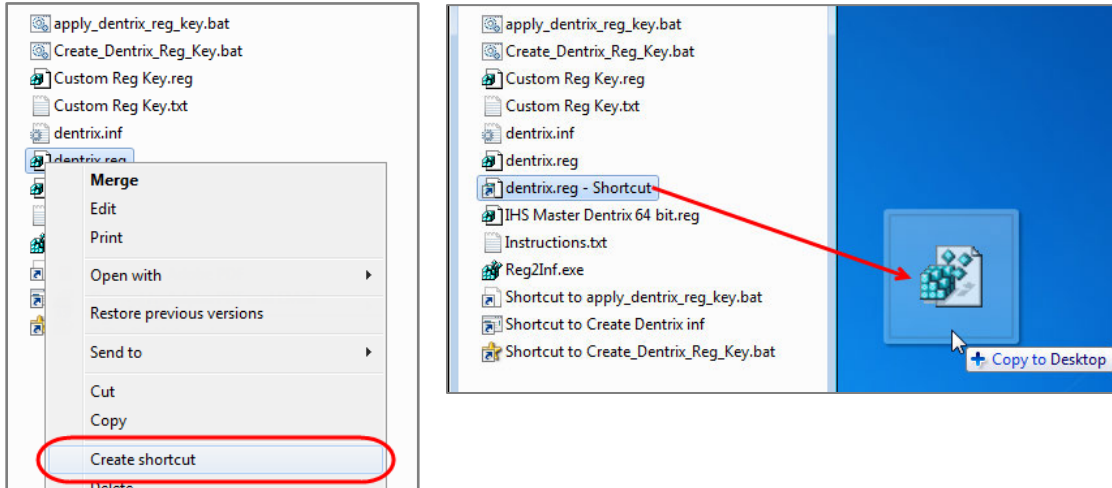


3. Do one of the following:

- From the **Registry to INF** folder (see step 2a), copy **Shortcut to apply\_dentrix\_reg\_key.bat** to the public Desktop (**C:\Documents and Settings\All Users\Desktop** or **C:\Users\Public\Desktop**) of all client workstations.

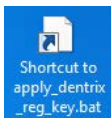


- For “Tribal” sites that want to use the .reg file to apply the customizations, create a shortcut for **dentrix.reg**, and then copy that shortcut instead of **Shortcut to apply\_dentrix\_reg\_key.bat** to the public Desktop (C:\Documents and Settings\All Users\Desktop or C:\Users\Public\Desktop) of all client workstations.

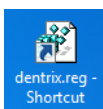


- Skip this step if you are only updating the customizations, and the necessary shortcuts already exist on all client workstations.
4. From each client workstation that you want to apply the customizations to, each Windows user must do one of the following the first time he or she logs on to Windows after the customizations are initially set up or are updated:

- Double-click **Shortcut to apply\_dentrix\_reg\_key.bat** on the Desktop of the workstation.



- For “Tribal” sites that want to use the .reg file to apply the customizations, double-click the shortcut for **dentrix.reg** on the Desktop of the workstation.

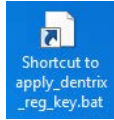


**Note:** For “Tribal” sites that want to use the .reg file to apply the customizations, all EDR users must have rights to run **regedit.exe**; if this is not possible, complete steps 2 – 4, using the “Federal” site options.

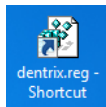
## Adding New Client Workstations

If you add a new client workstation to the network, after you install Dentrix Enterprise on it, each Windows user must do the following to apply the necessary IHS customizations on that client workstation the first time he or she logs on to Windows:

- Double-click **Shortcut to apply\_dentrix\_reg\_key.bat** on the Desktop of the new client workstation.



- For “Tribal” sites that want to use the .reg file to apply the customizations, double-click the shortcut for **dentrix.reg** on the Desktop of the new client workstation.



### Notes:

- If the shortcut to apply the customizations does not exist on the new workstation, open the **Registry to INF** folder (see step 2a in the “Initially Applying or Updating Customizations” section), and then copy the correct shortcut to the public Desktop (**C:\Documents and Settings\All Users\Desktop** or **C:\Users\Public\Desktop**) on the new workstation.
- For “Tribal” sites that want to use the .reg file to apply the customizations, all EDR users must have rights to run **regedit.exe**; if this is not possible, complete steps 2 – 4 in the “Initially Applying or Updating Customizations” section, using the “Federal” site options.