



RESOURCE AND PATIENT MANAGEMENT SYSTEM

Contract Health Services/ Management Information Systems PO Printing Web Module

(ACHS)

Installation Guide and Release Notes

Version 3.1 Patch 20
September 2011

Office of Information Technology (OIT)
Division of Information Resource Management
Albuquerque, New Mexico

Table of Contents

1.0	Release Notes	1
2.0	Installation Notes	2
2.1	Contents of Distribution	2
2.2	Required Resources	2
2.2.1	RPMS Requirements.....	2
2.2.2	Server Requirements.....	2
3.0	Installation Instructions	4
3.1	KIDS Installation	4
3.2	Server Installation	4
3.2.1	Java Virtual Machine	4
3.2.2	Apache FOP	5
3.2.3	CACHELIB Configuration	5
3.2.4	Zen Reports.....	8
3.2.5	XML file installation.....	9
3.2.6	User Authentication	14
3.3	Client Setup	17
4.0	Printer Setup	20
	Contact Information	21

1.0 Release Notes

- This patch is NOT cumulative of previous patches to this version.
- Server-side components will need to be installed in order to use the web printing features.
- Description of changes:
 - ACHSRPFU, ACHSRPF, ACHSRPF1 - Routines for using the GUI formless printing.
 - ACHSRPU - Fixed the document number printing.
 - ACHSMERG - Added entry point call for patient merge.

2.0 Installation Notes

Prefix: ACHS

Current Version: 3.1

2.1 Contents of Distribution

File	Description
ACHS0310.20k	KIDS Build
ACHS0310.20.xml	Server XML file
ACHS 0310.20i.pdf	Installation Guide
ACHS 0310.20o.pdf	Addendum to User Manual

2.2 Required Resources

2.2.1 RPMS Requirements

- CONTRACT HEALTH MGMT SYSTEM v 3.1 Patch 19
- VA FileMan 22 or higher
- VA Kernel 8 or higher
- IHS Dictionaries (Patient) AUPN V 99.1 patch 16
- IHS Dictionaries (Pointers) AUT V98.1 patch 20
- AREA ONLY:
 - Version 3.1 SENDTO SCRIPT
- Facility Only:
 - Lexicon 2.0
 - AICD 3.51 patch 7
 - Note: Referred Care Information system V4 patch 2 if using CHS/RCIS link
- Post-Script Enabled Printer

2.2.2 Server Requirements

(For the PO Printing Functions Only)

- Ensemble 2009.1.3 or later release
- Java Virtual Machine – Version 6

(See section 3.2.1 - Java Virtual Machine for additional install information)

- Apache FOP

(See 3.2.2 - Apache FOP for additional install information)

3.0 Installation Instructions

The KIDS installation can be done separately as it contains bug fixes. Sites that will not use the PO Printing Web functions do not need to complete the Server Installation section.

The Server Installation should be performed by a user with Administrator privileges to both the server operating system as well as the Ensemble database. This user should also be familiar with the Ensemble cube taskbar item as well as the Ensemble System Management Portal

3.1 KIDS Installation

1. This is a KIDS Install. Use the Installation options on the KIDS menu. Make sure all CHS users are off the system.
2. Load the Distribution into KIDS using option 1 on the KIDS Installation menu. The distribution was released in a file named achs0310.20k.
3. Verify the load using option 2 on the KIDS Installation menu.
4. Consider using options 3 and 4 on the KIDS Installation menu to print and compare the Transport.
5. Install the distribution using option 6 on the Installation menu.
6. For results, read the generated MailMan message, or use the KIDS "Install File Print" option to view/print the "ACHS*3.1*20" entry.
7. The post-install routine, ACHS3120, will deliver a patch installation mail message to local users that hold the ACHSZMENU, XUMGR, XUPROG, or XUPROGMODE security key.

3.2 Server Installation

3.2.1 Java Virtual Machine

1. For Windows:
 - a. Go to: http://www.java.com/en/download/inc/windows_upgrade_xpi.jsp to download and install Java onto the Ensemble Server.
2. For AIX:

It should be installed on your AIX server. To verify that it is installed, do the following: `#lspp -l |grep -i java`

- a. If not installed – go to:
<http://www.ibm.com/developerworks/java/jdk/aix/service.html> and download from the table.
- b. Select Java 6 for either 32 or 64 bit AIX (depending upon your system) – you will have to sign in to the IBM web site to download the version.
- c. Once signed in, agree to the license and then download and install.

<p>Note: The server may require a restart in order to fully complete the software installation. Please plan this downtime according to your site and user needs.</p>

3.2.2 Apache FOP

(For Ensemble versions prior to 2010.1)

Apache FOP (Formatting Objects Processor) is a print formatter driven by XSL formatting objects (XSL-FO) and an output independent formatter. It is a Java application that reads a formatting object (FO) tree and renders the resulting pages to a specified output. Output formats currently supported include PDF, PS, PCL, AFP, XML (area tree representation), Print, AWT and PNG, and to a lesser extent, RTF and TXT. The primary output target is PDF.

The following steps only need to be completed on versions of Ensemble prior to 2010.1. On versions 2010.1 and later, FOP is included with the Ensemble installation. Information about Apache FOP can be located at: <http://xmlgraphics.apache.org/fop/>

1. Download for Windows platform:
<http://opensource.become.com/apache/xmlgraphics/fop/binaries/>
 - a. Click on: fop-1.0-bin.zip (Approximately 24 MB)
2. Download for AIX platform:
<http://opensource.become.com/apache/xmlgraphics/fop/binaries/>
 - a. Click on: fop-1.0-bin.tar.gz (Approximately 19 MB)
 - b. The installation of the FOP library is simply to unzip the provided archive into a defined directory on the Ensemble server, such as c:\fop. It is not recommended that FOP be installed within the InterSystems Ensemble installation directory. Please note the total size of the uncompressed files is approximately 88MB.

3.2.3 CACHELIB Configuration

(For Ensemble versions prior to 2010.1)

This is to temporarily configure the CACHELIB database for read/write access because the ACHS installation contains updates to the Ensemble system code that are required for its use.

1. Open the Ensemble **System Management Portal** home page.
2. Under the **System Administration** section (green header), select the **Configuration** option (Figure 3-1).



Figure 3-1: System Administration Menu - Configurations option

3. Select the **Local Databases** option (Figure 3-2).



Figure 3-2: Configuration Page - Local Database option

4. A screen similar to the following will appear. The listing of databases on your screen will be different than the one displayed below. Select the **Edit** link for the CACHELIB database (Figure 3-3).

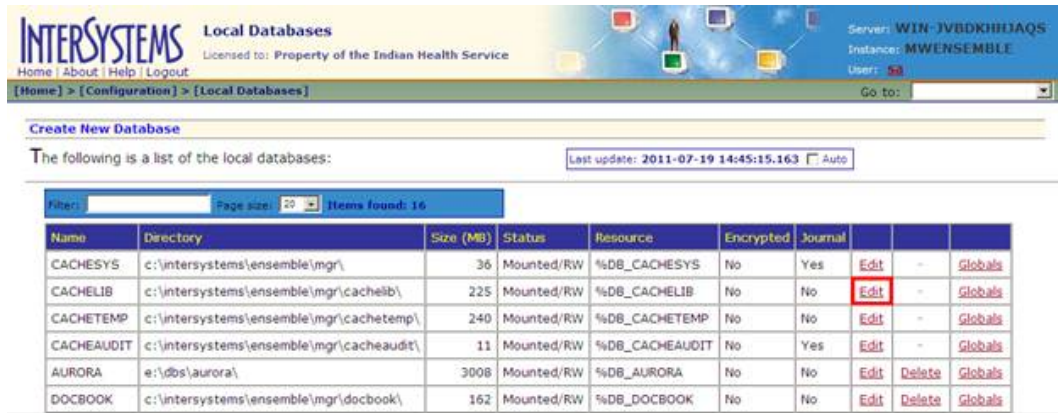


Figure 3-3: List of Local Databases - Edit option

- By default, the Read Only property attribute should be configured as “Yes”. If it is, change it to “No” and then press the **Save** button. If it is already configured as “No”, simply press the **Close** button.

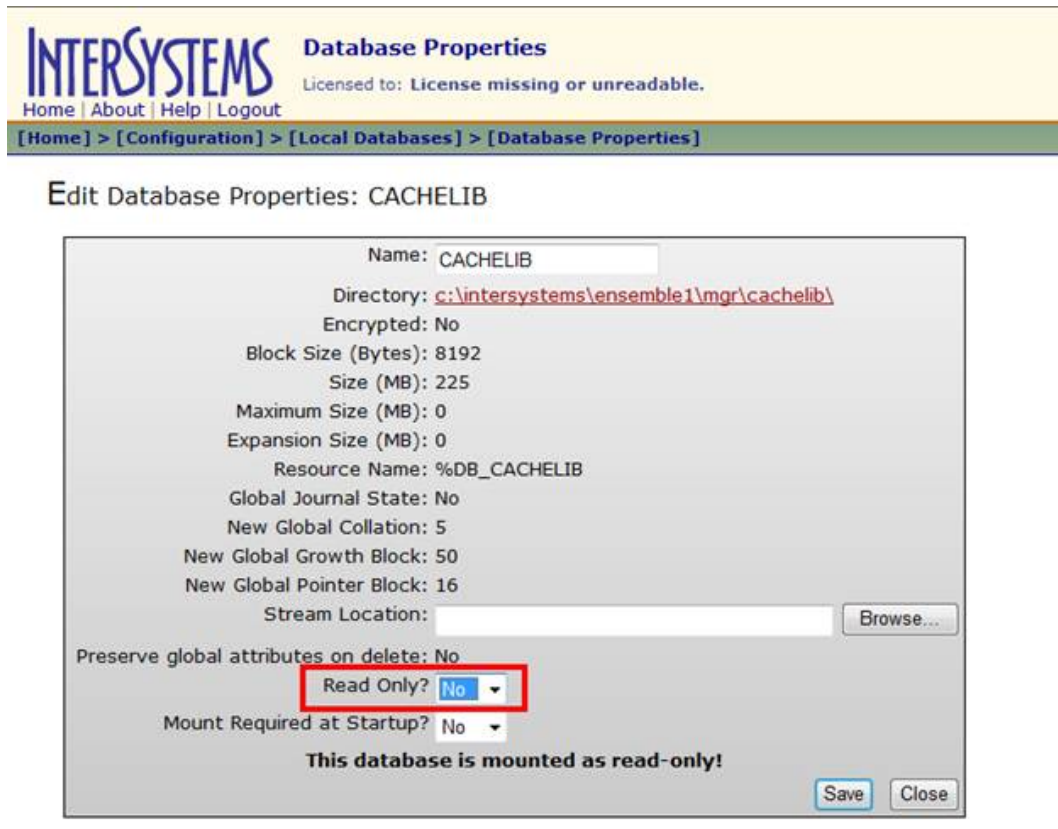


Figure 3-4: Edit Database Properties for CACHELIB

- You will be returned to the **Local Databases** configuration page.

3.2.4 Zen Reports

This is to configure Zen Reports to use the Apache FOP library which was downloaded and installed previously in Section 3.2.2. - Apache FOP.

1. Return to the **System Management Portal** Home Page by clicking on the **Home** link.
2. Under the **System Administration** section (green header), select the **Configuration** option (Figure 3-5).

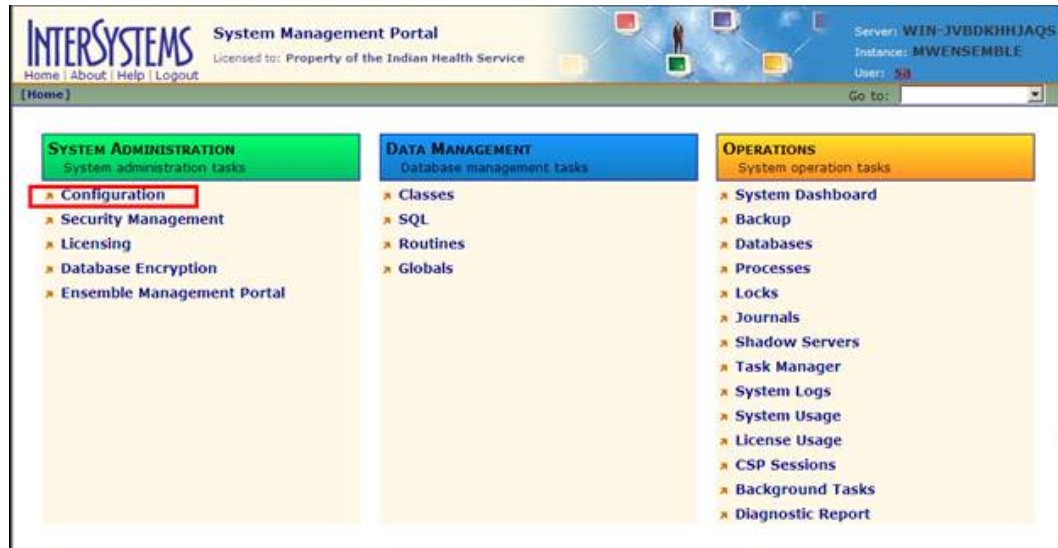


Figure 3-5: System Administration Menu - Configurations Option

3. Click **Zen Reports Settings** under the Additional Settings section (Figure 3-6).

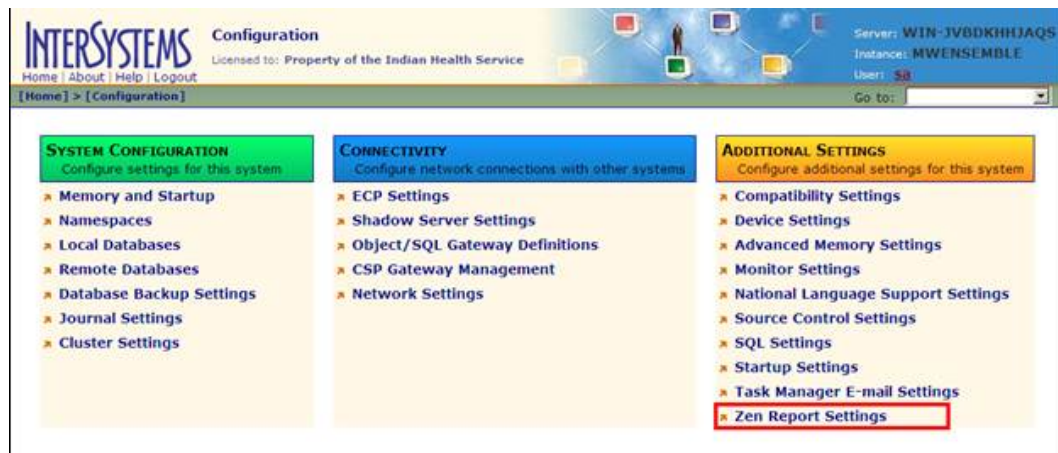
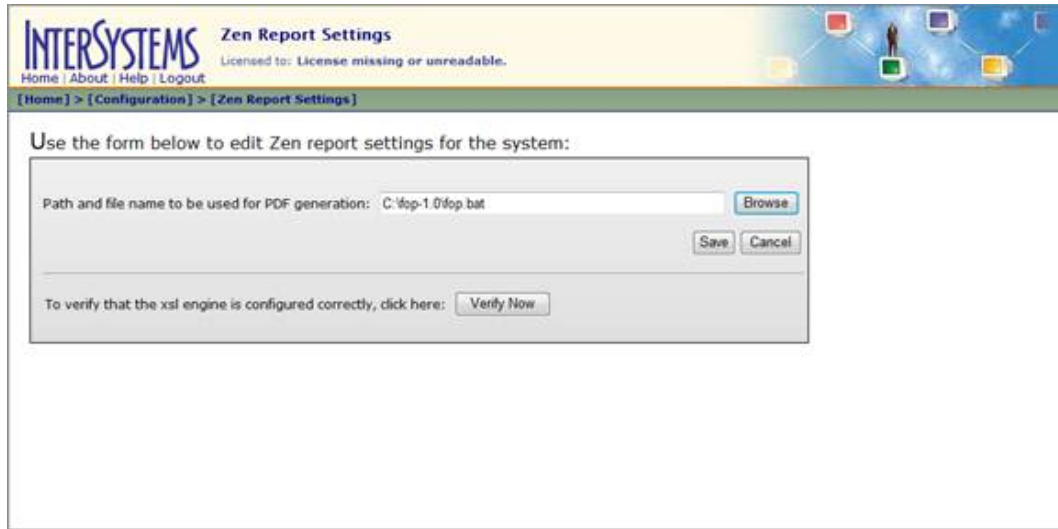


Figure 3-6: Additional Settings Menu - Zen Report Setting Option

4. Use the **Browse** button to locate either the “fop.bat” file for Windows systems or the “fop” file for AIX systems. It will be located in the installation directory where the Apache FOP library was unzipped (Figure 3-7).
5. Click on the **SAVE** button to complete the setting. The **Verify Now** button can be clicked to confirm the correct installation of FOP and Java (Figure 3-7).



The screenshot shows the 'Zen Report Settings' page in the InterSystems Systems Management Portal. The page header includes the InterSystems logo, the title 'Zen Report Settings', and a license notice: 'Licensed to: License missing or unreadable.' Below the header is a breadcrumb trail: '[Home] > [Configuration] > [Zen Report Settings]'. The main content area contains the instruction: 'Use the form below to edit Zen report settings for the system:'. The form has a text input field with the value 'C:\top-1.0\top.bat' and a 'Browse' button to its right. Below the input field are 'Save' and 'Cancel' buttons. At the bottom of the form, there is a text label 'To verify that the xsl engine is configured correctly, click here:' followed by a 'Verify Now' button.

Figure 3-7: Zen Report Settings - Browse Option

3.2.5 XML file installation

1. Return to the **Systems Management Portal** Home page by clicking on the **Home** link.
2. Under the **Data Management** section (blue header), select the **Classes** option (Figure 3-8).

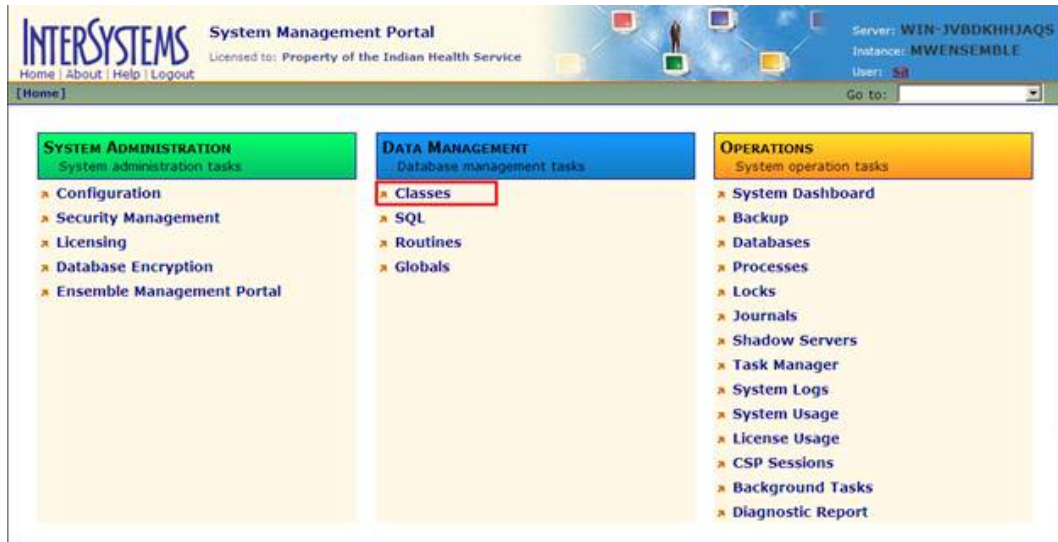


Figure 3-8: Data Management Menu - Classes Option

3. In the blue bar to the left of the screen, make sure that **Namespaces** is checked and then select your production RPMS namespace. The contents of your Classes page may differ from the one displayed here (Figure 3-9).
4. At the top of the **Classes** page, just below the grey navigation bar are several links. Click on the **Import** link (Figure 3-9).



Figure 3-9: Classes Page - List by Namespaces

5. Click the **Browse** button and locate the ACHS0310.20.xml installation file (Figure 3-10)

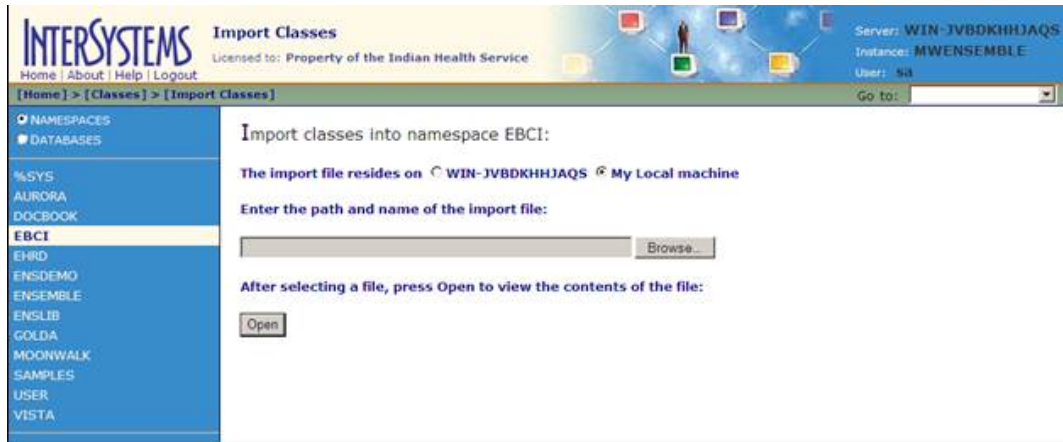


Figure 3-10: Import Classes Page

6. Locate and select the ACHS0310.20.xml installation file and click on the **OK** button (Figure 3-11).

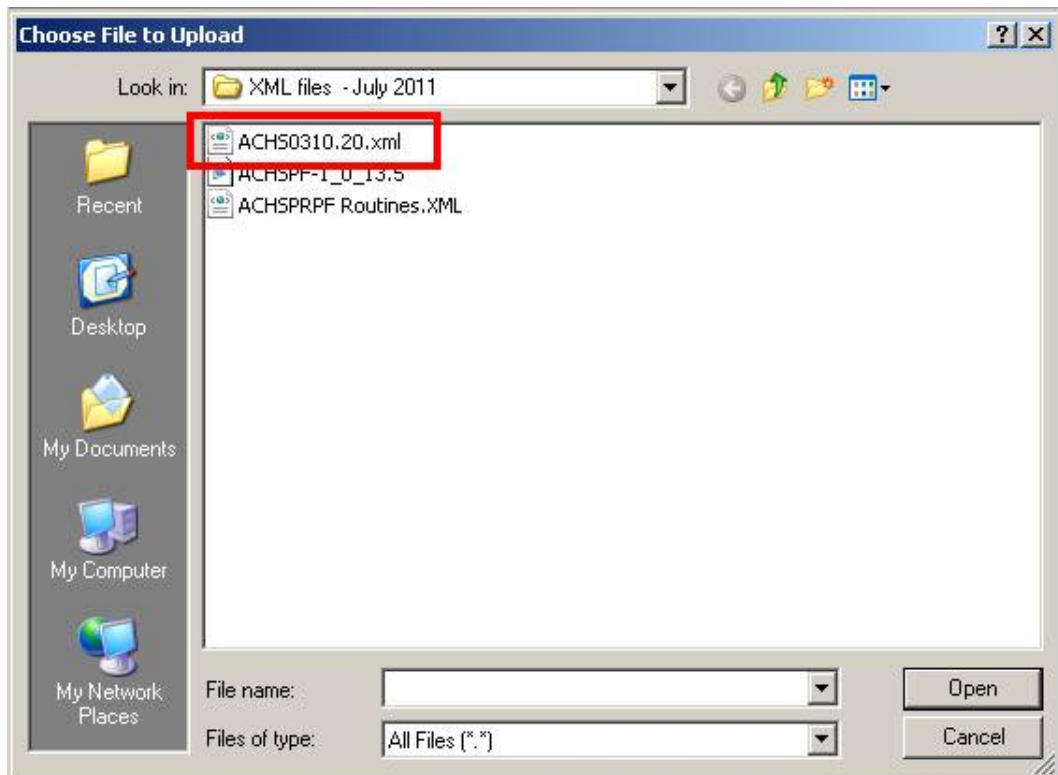


Figure 3-11: Browse Window for XML File Location

7. You will be returned to the **Import Classes** page with the location of your installation file displayed. Click on the **Open** button (Figure 3-12).

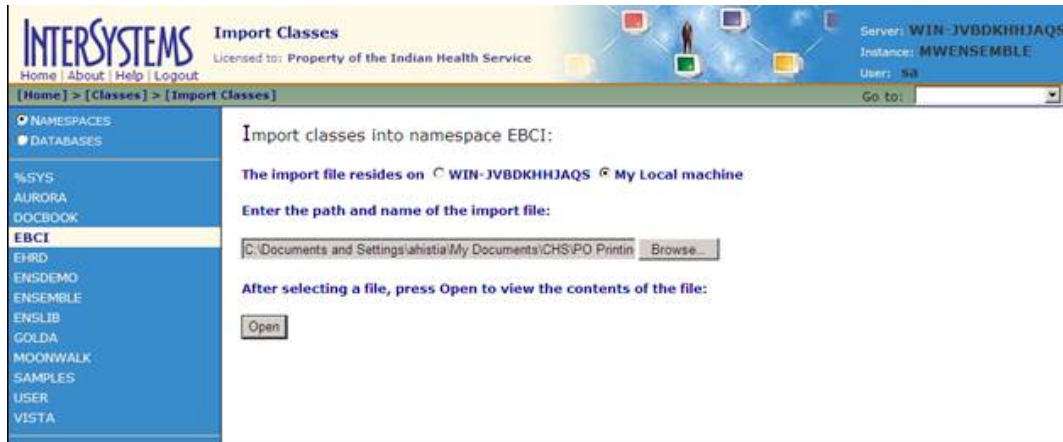


Figure 3-12: Import Classes Page

8. A list of all items included in the XML file will be displayed (Figure 3-13).



Figure 3-13: Import Classes - List of Files

9. For Ensemble versions prior to 2010.1:

- a. Click the **Select All** button at the bottom of the list (Figure 3-14).



Figure 3-14: Import Classes - List of Files with Select All

10. For Ensemble versions 2010.1 or higher:

- a. Uncheck the following three items, which should appear at the top (Figure 3-15):
 - %SYS.ZENReportServer.cls
 - %ZEN.Report.PrintServer.cls
 - %ZEN.Report.reportPage.cls

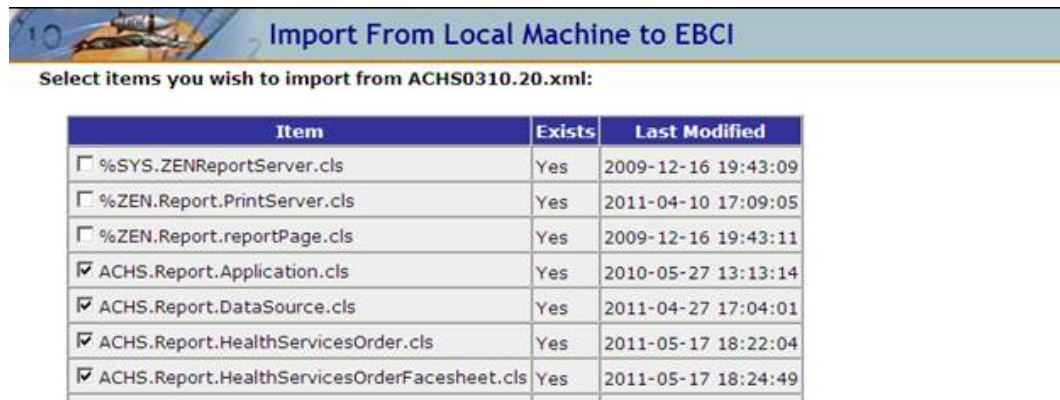


Figure 3-15: Import Classes Page - Deselected 3 Files

11. Click the **Import** button (Figure 3-16).



Figure 3-16: Import Classes Page - Import Button

12. The installation package will load and compile (Figure 3-17). Check the output to confirm that no compile errors have occurred. If any errors have occurred, please contact your ACHS Web Printing representative for assistance.



Figure 3-17: Import Results Page

Note: At the beginning of this installation, you were instructed to change the Read Only attribute of the CACHELIB database from Yes to No. It is recommended that you now change the Read Only attribute of the CACHELIB database to “Yes”.

3.2.6 User Authentication

The following steps are to setup the CHS PO Print webpage so the user will not see the Ensemble **Login** page when using the webpage.

1. Return to the **Systems Management Portal** Home page by clicking on the **Home** link.

2. Under the **System Administration** section (green header), select the **Security Management** option (Figure 3-18).



Figure 3-18: System Administration - Security Management Option

3. Under the **Application Definitions** menu, click on the **CSP Applications** option (Figure 3-19).



Figure 3-19: Application Definitions Menu - CSP Application Option

4. Locate the namespace that the xml files were previously installed under and click on the **Edit** link (Figure 3-20).

The screenshot shows the INTERSYSTEMS CSP Applications web interface. The header includes the INTERSYSTEMS logo, the text 'CSP Applications', and 'Licensed to: Property of the Indian Health Service'. Below the header is a navigation menu with links for Home, About, Help, and Logout. The main content area displays the title 'Create New CSP Application' and a message: 'The following is a list of CSP applications that are currently defined:'. A timestamp indicates the last update was on 2011-09-13 at 14:44:03.290. Below this is a table with columns for Name, Enabled, Type, Resource, and Authentication Methods. The table lists 13 applications, each with an 'Edit' and 'Delete' link. The application '/csp/ebci' is highlighted in red.

Name	Enabled	Type	Resource	Authentication Methods		
/csp/aurora	Yes	CSP	%Admin_Manage	Password	Edit	Delete
/csp/ebci	Yes	CSP	%Admin_Manage	Password	Edit	Delete
/csp/ehrd	Yes	CSP	%Admin_Manage	Password	Edit	Delete
/csp/ensdemo	Yes	CSP	%Admin_Manage	Password	Edit	Delete
/csp/ensemble	Yes	CSP	%Admin_Manage	Password	Edit	Delete
/csp/golda	Yes	CSP	%Admin_Manage	Password	Edit	Delete
/csp/moonwalk	Yes	CSP	%Admin_Manage	Password	Edit	Delete
/csp/phr	Yes	CSP	%Admin_Manage	Password	Edit	Delete
/csp/samples	Yes	CSP		Password,Unauthenticated	Edit	Delete
/csp/user	Yes	CSP		Password,Unauthenticated	Edit	Delete
/csp/vista	Yes	CSP	%Admin_Manage	Password	Edit	Delete
/isc/studio/usertemplates	Yes	CSP		Password,Unauthenticated	Edit	Delete

Figure 3-20: List of CSP Applications

5. In the General tab, check the **Unauthenticated** box next to the “Allowed Authentication Methods” option. Then click the **Save** button at the bottom (Figure 3-21).

Figure 3-21: Edit CSP Application Page

3.3 Client Setup

1. Open the Internet Explorer web browser
2. Enter the following URL into the web browser from the server:
http://localhost:<port>/csp/<namespace>/achs/default.csp
 - a. Replace **<port>** with the web server port assigned to your Ensemble installation. The port default is 57772 however your site may be different (Figure 3-22).

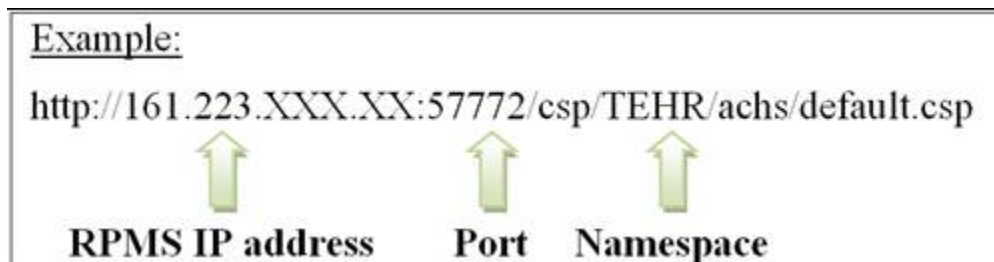


Figure 3-22: Example of Web Address

- The following Ensemble login page will appear before the user can continue (Figure 3-23). This page can be turned on and off through the **Systems Management Portal** (Refer to 3.2.6 - User Authentication for more information).



Server: WIN-JVBDKHHJAQS
Instance: MWENSEMBLE

Please enter your user name and password to login:

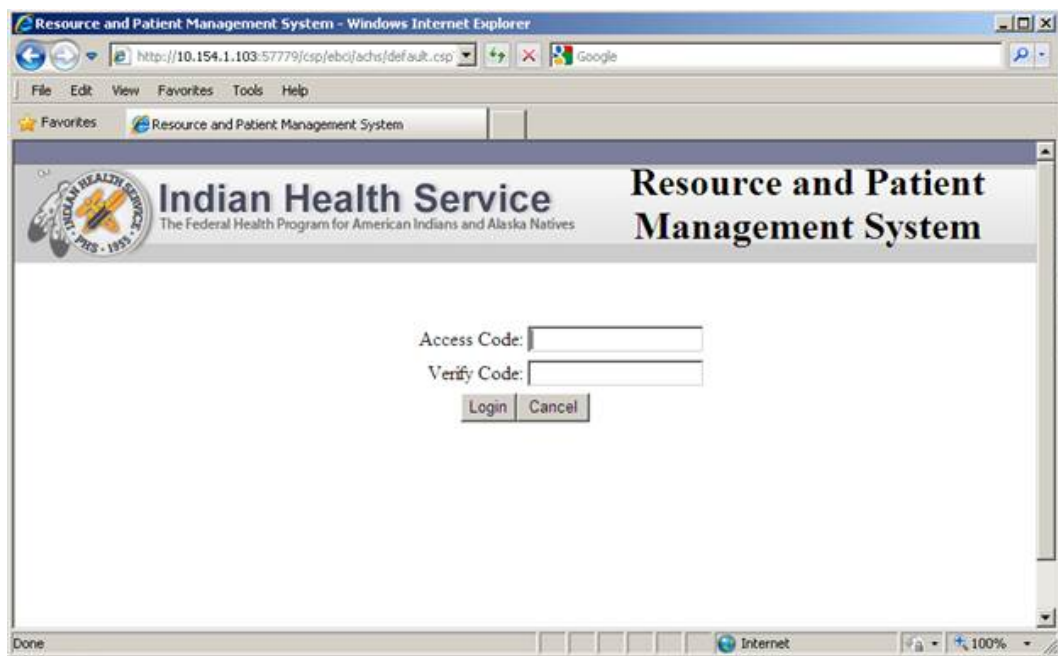
User Name:

Password:

Login

Figure 3-23: Ensemble Login Page

- Once logged into Ensemble, the ACHS login page should appear (Figure 3-24). Enter in the RPMS login information to continue to the printing web page:



Resource and Patient Management System - Windows Internet Explorer

http://10.154.1.103:57779/csp/ebcfachs/default.csp

File Edit View Favorites Tools Help

Resource and Patient Management System

Indian Health Service
The Federal Health Program for American Indians and Alaska Natives

Resource and Patient Management System

Access Code:

Verify Code:

Login Cancel

Figure 3-24: RPMS Login Page

- This page can be added to the browser "Favorites" list for easier access. A shortcut icon can also be placed on the desktop (Figure 3-25).

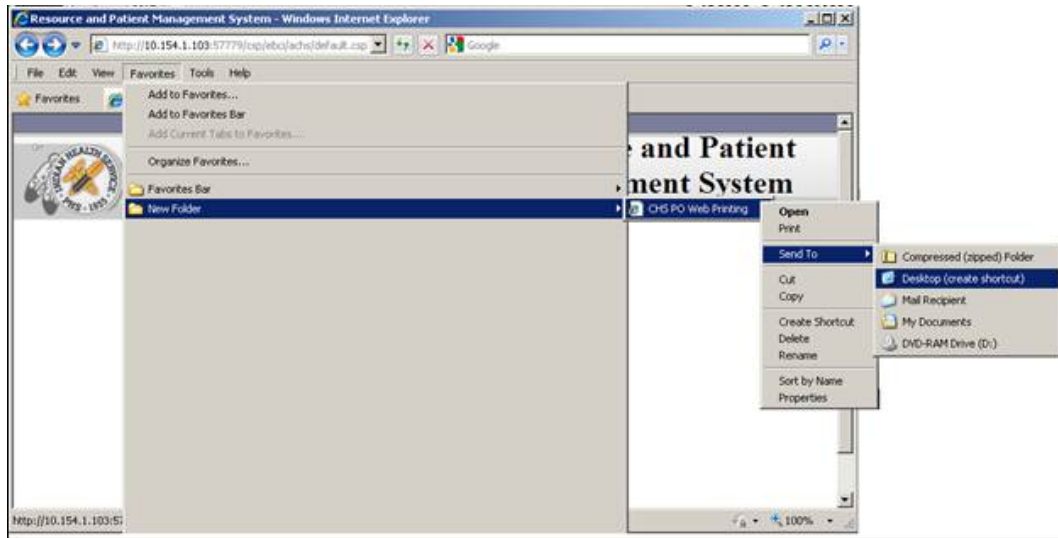


Figure 3-25: Adding Webpage Link to Favorites

4.0 Printer Setup

The PRMS Printer device that will be used for the web printing interface should have the appropriate postscript drivers installed. Please refer to the printer manufacturer for more information on installing print drivers.

Local printing is available to print documents directly from the PDF display.

When setting up the device in RPMS, be sure to include a “PS” in the Device name. This will allow the printer listing on the web interface to filter the postscript enabled printers (Figure 4-1).

```
Select Device Management Option: DEVICE EDIT

Select DEVICE NAME: CHS PS      CHS      | PRN | CHS_PS      EBCI
NAME: CHS PS//
LOCATION OF TERMINAL: CHS//
Select MNEMONIC: CHS//
LOCAL SYNONYM:
$I: | PRN | CHS_PS//
```

Figure 4-1: RPMS Device Management Option

Contact Information

If you have any questions or comments regarding this distribution, please contact the OIT Help Desk (IHS).

Phone: (505) 248-4371 or (888) 830-7280 (toll free)

Fax: (505) 248-4363

Web: <http://www.ihs.gov/GeneralWeb/HelpCenter/Helpdesk/index.cfm>

Email: support@ihs.gov