



RESOURCE AND PATIENT MANAGEMENT SYSTEM

# **Prenatal Care Module**

(BJPN)

## **Addendum to Installation Guide and Release Notes**

Version 2.0 Patch 04  
September 2015

Office of Information Technology  
Division of Information Technology

# Table of Contents

<b>1.0</b>	<b>Release Notes .....</b>	<b>1</b>
<b>2.0</b>	<b>Installation Notes.....</b>	<b>2</b>
2.1	Contents of Distribution .....	2
2.2	Required Resources .....	2
2.2.1	RESOURCE AND PATIENT MANAGEMENT SYSTEM (RPMS).....	2
2.3	Before You Begin: Installation Issues .....	2
<b>3.0</b>	<b>Installation Instructions .....</b>	<b>4</b>
3.1	Disk Space .....	4
3.2	Pre-installation.....	4
<b>4.0</b>	<b>Sample Installations.....</b>	<b>5</b>
4.1	RPMS Server Install .....	5
4.2	Prenatal EHR setup Installation.....	6
4.3	Sample RPMS Server Installation.....	6
4.4	Sample GUI Client Installation.....	9
<b>5.0</b>	<b>Installation Configuration .....</b>	<b>14</b>
5.1	Post Installation RPMS Parameter Definition .....	14
	<b>Glossary.....</b>	<b>15</b>
	<b>Acronym List .....</b>	<b>17</b>
	<b>Contact Information .....</b>	<b>18</b>

## 1.0 Release Notes

Version 2.0 is the second release of the Electronic Health Record (EHR) Prenatal Care Module (PCM). The Patch 4 release addresses the following two issues reported with the Version 2.0 release and Patch 3:

1. CR 4721: BJPN Prenatal PIP- Large number of BGOVPOV GET calls being returned and causing system slowness. Implemented updated BEHPovCvg.dll from MSC to address the GET calls.
2. CR 4726: BJPN Prenatal PIP only displays visit instructions from current visit (BJPNGNOT Routine).

Each of these issues has been addressed in Patch 4.

The site should have already installed EHR, Prenatal Version 2.0 and Prenatal Version 2.0 Patch 3 prior to installing this patch. The intended audiences for this document are Indian Health Service (IHS) site managers and other technical staff.

## 2.0 Installation Notes

**Prefix:** BJPN

**Current Version:** 2.0 Patch 04

### 2.1 Contents of Distribution

File	Description
bjpn0200.04k	Version 2.0 Patch 4 KIDS installation file
bjpn0200.04GUI.zip	Version 2.0 Patch 4 EHR Prenatal installation files in WINZIP format. The zip file contains the GUI installation file bjpn0200.04.exe
bjpn0200.04n	Version 2.0 Patch 4 notes file
bjpn0200.04i.pdf	Version 2.0 Patch 4 Addendum to Installation Guide (this document)
bjpn0200.04t.pdf	Version 2.0 Patch 4 Addendum to Technical Manual

### 2.2 Required Resources

#### 2.2.1 RESOURCE AND PATIENT MANAGEMENT SYSTEM (RPMS)

The RPMS server portion of the PCM application does not require a specific version of Ensemble® or a specific operating system (OS). However, the RPMS server must be able to fully support the other required RPMS applications listed below and is therefore subject to any requirements needed to run those applications.

**Note:** Since BMX\*4.0\*3, BJPC\*2.0\*11, EHR\*1.1\*14, LEX\*2.0\*1003, BSTS\*1.0\*3 are all required patches for the PRENATAL CARE MODULE 2.0 package, the Prenatal Care Module Version 2.0 Patch 4 release only requires that the PRENATAL CARE MODULE 2.0 Patch 3 be installed prior to its installation.

Table 2-1: Required RPMS Server Software

Module	Minimum Version
PRENATAL CARE MODULE 2.0 Patch 3	v2.0 Patch 3

### 2.3 Before You Begin: Installation Issues

1. Make a copy of this distribution for offline storage.

2. Print all notes and readme files.
3. To ensure a printed audit trail if any problems arise, capture the terminal output during the installation using an auxport printer attached to the terminal.

## 3.0 Installation Instructions

The PCM contains components that run on both the RPMS server and the client Personal Computer (PC) via EHR. Installation of the RPMS server components is conventional and consists of a Kernel Installation and Distribution System (KIDS) build. In addition, a setup file to install required Dynamic Linked Library (dll) files into EHR is included.

### 3.1 Disk Space

With Version 2.0 Patch 4 of Prenatal, approximately 15 MB of disk space on the server is needed for the bjpn0200.04.exe to install the required dll files in EHR.

### 3.2 Pre-installation

Before installing the PCM application, the following items should be completed (in no particular order):

- If possible, initially load the software into a test account, then into the production account. There are no routines or globals to remove after the installation is complete.
- Refer to the remaining installation steps and sample installations (Section 4.0 through Section 4.4) for the applicable prompts and user responses. User responses appear in bold type.
- Ensure that the BMX system is installed and that a BMX monitor process is running. BMX's Integrated Security feature allows EHR sessions to connect to RPMS without having to re-specify access and verify codes every time. For this feature to work, the integrated security field of the BMX monitor port must be set to Yes. See the BMX User and Installation Manuals for details on BMX.
- Ensure the other required applications have been installed.

## 4.0 Sample Installations

### 4.1 RPMS Server Install

The follow steps describe the process to install the KIDS build associated with the PCM release:

1. On the RPMS server, load and install the **bjpn0200.04k** file using the KIDS menu options. From the **KIDS** menu, select the **Installation** menu.
2. From the **Installation** menu, select **Option 1: Load a Distribution**.
3. At the “Enter a Host File” prompt, type **bjpn0200.04k**. It might be necessary to precede the file name with the appropriate host path.
4. At the “Want to Continue with Load? YES//” prompt, type **Yes** (or press the ENTER key to accept the default).
5. From the **Installation** menu, select **Option 2: Verify Checksums in Transport Global**. This option provides a mechanism for ensuring the integrity of your routines, verifies checksums for the components of the Transport global, and reports any errors uncovered.
6. At the “Select Install Name” prompt, type **BJPN\*2.0\*4**.
7. The following KIDS options are not required but can be run if desired. If either of the options are run, at the “Select Install Name prompt”, type **BJPN\*2.0\*4**.
  - a. **Back Up a Transport Global** – this option creates a MailMan message that will back up all current routines on the system that would be replaced by this release. Because this is a new release, no files will be replaced.
  - b. **Compare Transport Global** – this option performs a comparison check between the current system and the changes included with the installation.
8. From the **Installation** menu, select the **Install Packages(s)** option.
9. At the “Select Install Name” prompt, type **BJPN\*2.0\*4**.
10. Respond to the following prompts as indicated:
  - a. At the “Want KIDS to Rebuild Menu Trees Upon Completion of Install? YES//” prompt, type **NO**.
  - b. At the “Want KIDS to INHIBIT LOGONs during the install?//YES” prompt, type **NO**.
  - c. At the “Want to DISABLE Scheduled Options, Menu Options and Protocols?// YES” prompt, type **NO**.

11. Type the device that will print the install messages.

12. Exit the **Installation** menu.

## 4.2 Prenatal EHR setup Installation

The installation of the bjpn0200.04.exe *must* be coordinated with the installation of the KIDS on the RPMS server so that EHR is ready after the KIDS is installed. To install the Prenatal Graphical User Interface (GUI) components in the EHR library, run bjpn0200.04.exe. The setup process will prompt the user for which components they wish to install. Generally, both the EHR Pregnancy Issues and Problems and EHR Prenatal Pick List components should be installed.

Before installing, it is necessary to find out the location on the server to install the new files to.

## 4.3 Sample RPMS Server Installation

**Note:** User responses appear in bold type.

Figure 4-1 shows how to select the KIDS installation menu:

```
Select OPTION NAME: XPD MAIN   Kernel Installation & Distribution System

      Edits and Distribution ...
      Utilities ...
      Installation ...

Select Kernel Installation & Distribution System Option: Installation

1   Load a Distribution
2   Verify Checksums in Transport Global
3   Print Transport Global
4   Compare Transport Global to Current System
5   Backup a Transport Global
6   Install Package(s)
    Restart Install of Package(s)
    Unload a Distribution

Select Installation Option: 1   Load a Distribution
```

Figure 4-1: Selecting installation option

Other prompts are shown in Figure 4-2:

```
Enter a Host File: C:\RPMS\bjpn0200.04k

KIDS Distribution saved on Sep 08, 2015@10:28:47
Comment: BJPN*2.0*4

This Distribution contains Transport Globals for the following Package(s):
BJPN*2.0*4
```



```

Distribution OK!

Want to Continue with Load? YES//
Loading Distribution...

Build BJPN*2.0*4 has an Environmental Check Routine
Want to RUN the Environment Check Routine? YES//
    BJPN*2.0*4
Will first run the Environment Check Routine, BJPN2P04

Use INSTALL NAME: BJPN*2.0*4 to install this Distribution.


1      Load a Distribution
2      Verify Checksums in Transport Global
3      Print Transport Global
4      Compare Transport Global to Current System
5      Backup a Transport Global
6      Install Package(s)
        Restart Install of Package(s)
        Unload a Distribution

You have 4 PENDING ALERTS
    Enter "VA to jump to VIEW ALERTS option

Select Installation Option: 2  Verify Checksums in Transport Global
Select INSTALL NAME:      BJPN*2.0*4      Loaded from Distribution      Loaded from
Distribution 9/10/15@13:06:51
    => BJPN*2.0*4 ;Created on Sep 08, 2015@10:28:47

This Distribution was loaded on Sep 10, 2015@13:06:51 with header of
    BJPN*2.0*4 ;Created on Sep 08, 2015@10:28:47
It consisted of the following Install(s):
    BJPN*2.0*4

Want each Routine Listed with Checksums: Yes//    YES
DEVICE: HOME//    Virtual

PACKAGE: BJPN*2.0*4      Sep 10, 2015 1:06 pm      PAGE 1
-----

BJPN2P04  Calculated      21234032
BJPNGNOT  Calculated      45233738

    2 Routines checked, 0 failed.


1      Load a Distribution
2      Verify Checksums in Transport Global
3      Print Transport Global
4      Compare Transport Global to Current System
5      Backup a Transport Global
6      Install Package(s)
        Restart Install of Package(s)
        Unload a Distribution

```

[illegible]

Figure 4-2: Sample Installation

## 4.4 Sample GUI Client Installation

The following section outlines the installation procedures for loading Prenatal EHR setup files:

1. Navigate to the folder on the server machine that contains the Prenatal EHR setup program (Figure 4-3).

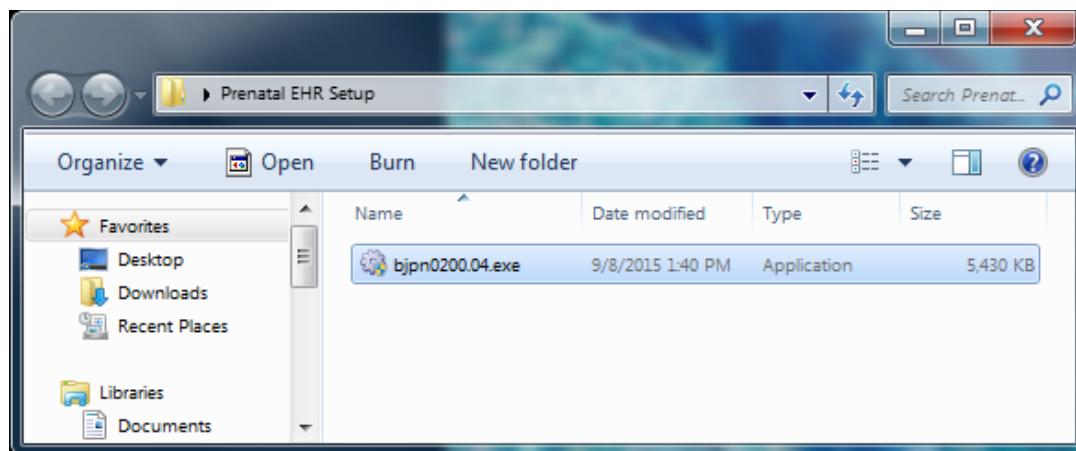


Figure 4-3: bjpn0200.04.exe program

2. Launch the **bjpn0200.04.exe** program. The **Prenatal Module EHR Components Setup Wizard** displays the **License Agreement** (Figure 4-4).

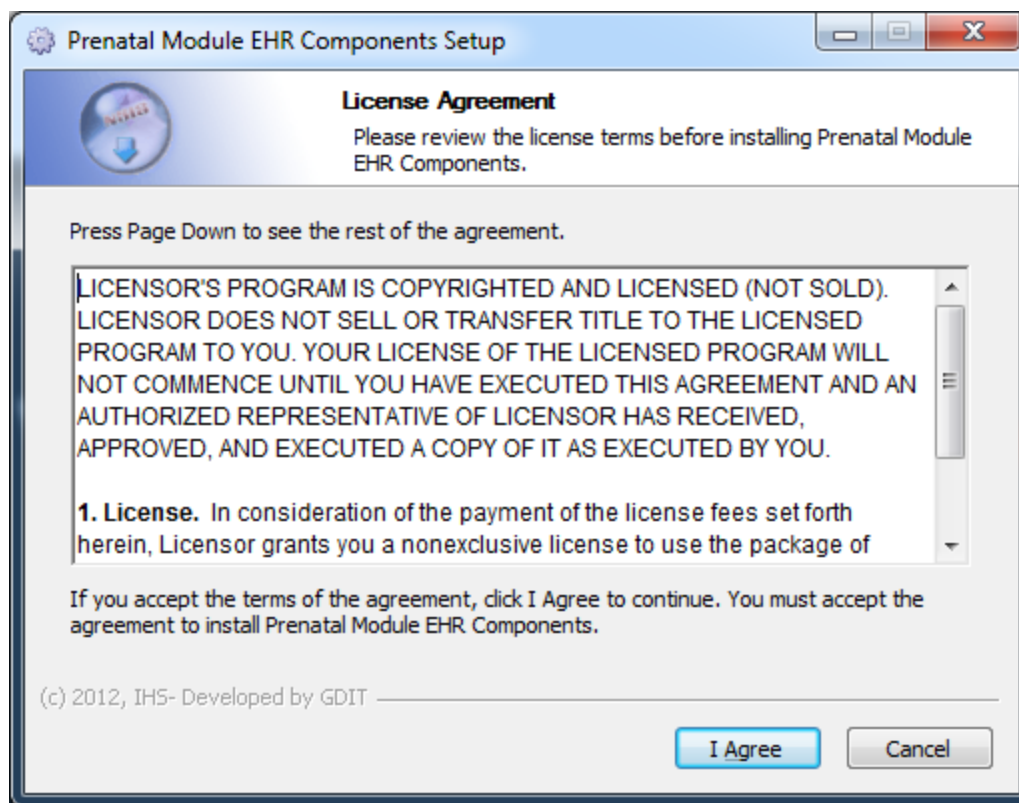


Figure 4-4: **License Agreement** dialog

3. Click **I Agree**. The **Choose Components** dialog is displayed (Figure 4-5).

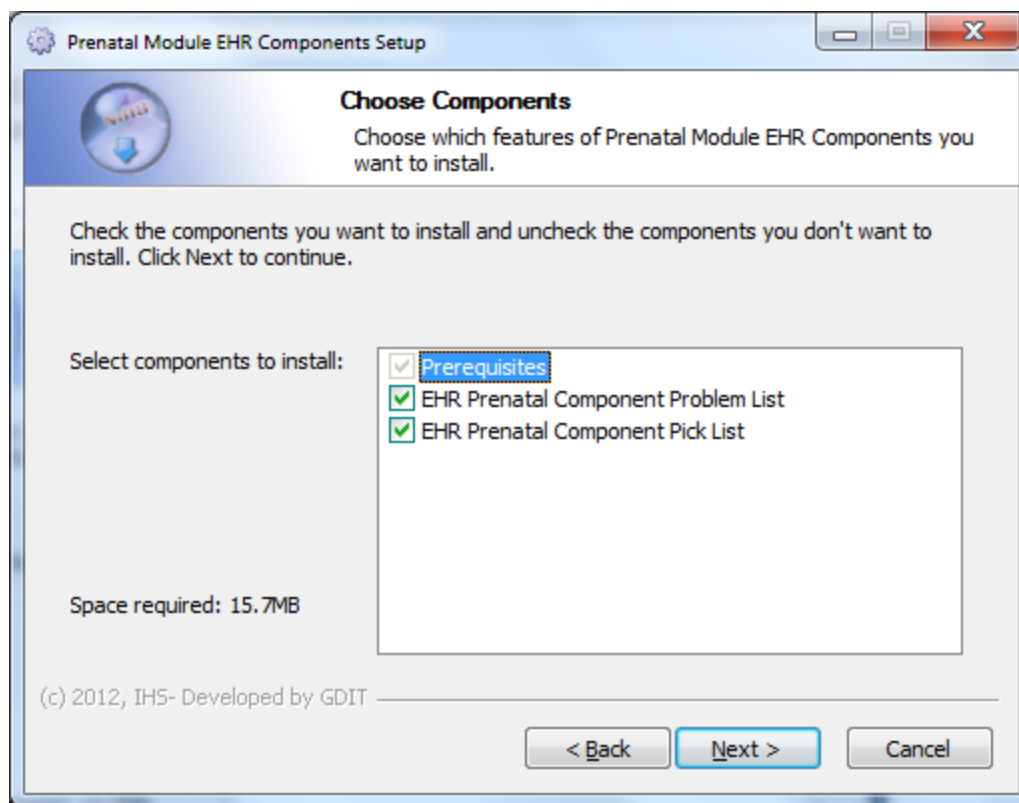


Figure 4-5: **Choose Components Folder** screen

4. Select the **EHR Prenatal Component Problem List** and the **EHR Prenatal Component Pick List**. Click **Next** to continue. The **Choose Install Location** dialog is displayed (Figure 4-6).

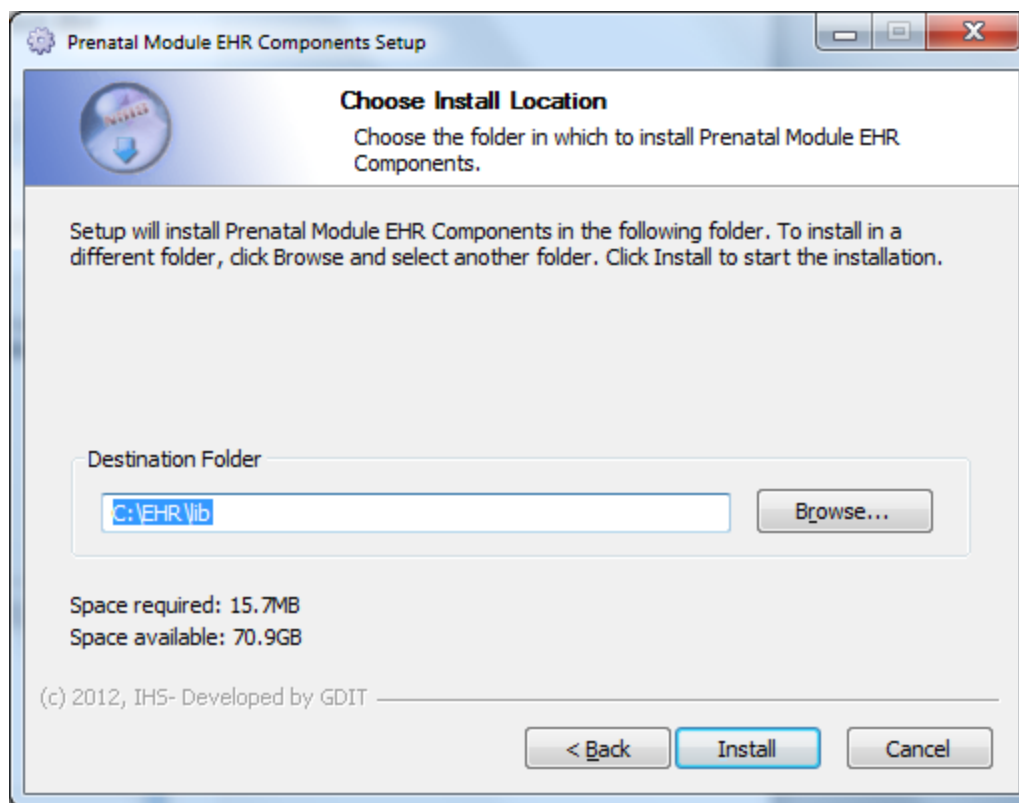


Figure 4-6: **Choose Install Location** screen

5. Click **Browse** to navigate to the location where the Prenatal EHR setup files are to be installed.
6. Click **Install** to continue. The **Completing the Prenatal Module ER Components Setup Wizard** dialog (Figure 4-7) is displayed.

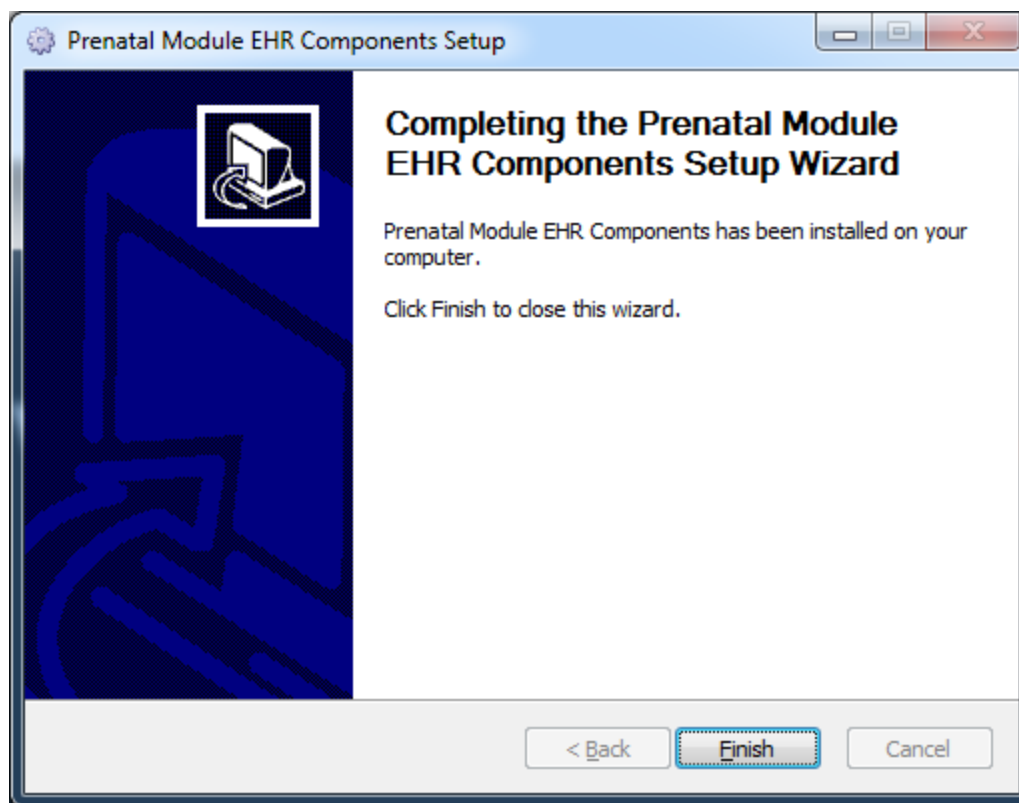


Figure 4-7: **Completing the Prenatal Module EHR Components Setup Wizard** dialog

7. Click **Finish** to complete the installation. A confirmation dialog will display.
8. Click **Close** to complete the installation.

## **5.0 Installation Configuration**

### **5.1 Post Installation RPMS Parameter Definition**

The Prenatal KIDS installation contains two new parameters relating to the new Prenatal components: The BJPN DISABLE PRENATAL EDITING parameter and the BJPN POST DEDD DAYS parameter. These parameters should have been defined during the Prenatal Version 2.0 installation. See the original Prenatal Version 2.0 installation manual for instructions on these parameters.



# Glossary

**Pregnancy Issues and Problems List (PIP)**

New functionality created in the BJPN namespace to implement pregnancy problem tracking for SNOMED CT® terms.

**Pregnancy Issues and Problems Pick List (PIPPL)**

New functionality created in the BJPN namespace to implement pregnancy problem tracking for SNOMED CT® terms. This module enables user selection of SNOMED CT® terms to add to the PIP module.

**Pregnancy Problems Pick List (PPL)**

New functionality created in the BJPN namespace to implement pregnancy problem tracking for SNOMED CT® terms. This module enables user selection of SNOMED CT® terms to add to the PIP module.

**Electronic Health Record (EHR)**

An application used by medical organizations to track patient medical records and care.

**ICD Codes**

One of several code sets used by the healthcare industry to standardize data. The International Classification of Disease (ICD) codes are an international diagnostic coding scheme. In addition to diseases, ICD also includes several families of terms for medical-specialty diagnoses, health status, disablements, procedures, and reasons for contact with HCPs. IHS currently uses ICD-9 for coding.

**Microsoft® (MS)**

Software company that develops and distributes the Visual Studio® (VS) tool used to develop the Prenatal application.

**Office of Information Technology (OIT)**

The organization within IHS that is responsible for developing and maintaining RPMS and related IT functions.

**Purpose of Visit (POV)**

In RPMS, ICD codes and narrative describing the patient's purpose of visit (POV) are documented in PCC V POV.

**Resource and Patient Management System (RPMS)**

A series of integrated software components that includes clinical, administrative, and financial functions.

**RPMS Patient Care Component (PCC)**

Refers to functions within RPMS as a clinical data repository, storing visit-related data about a patient.

**Software Quality Assurance (SQA)**

The office within OIT responsible for ensuring that the system conforms to RPMS Programming Standards and Conventions (SAC).

**Text Integration Utility (TIU)**

Refers to functions within RPMS used to store long blocks of text in the medical record.

**Visual Studio® (VS)**

Microsoft software development tool and integrated development environment (IDE) used to develop the Prenatal application.

## Acronym List

Acronym	Term Meaning
<b>APCD</b>	PCC Data Entry
<b>API</b>	Application Programmer Interface
<b>BJPC</b>	IHS PCC Suite
<b>BJPN</b>	Namespace for Prenatal files and routines
<b>BMX</b>	BMXNET
<b>DEDD</b>	Definitive Estimated Date of Delivery
<b>DI</b>	VA FileMan
<b>DLL</b>	Dynamic Link Library
<b>EHR</b>	Electronic Health Record
<b>GUI</b>	Graphical User Interface
<b>HS</b>	Health Summary
<b>IEN</b>	Internal Entry Number
<b>IHS</b>	Indian Health Service
<b>KIDS</b>	Kernel Installation and Distribution System
<b>MS</b>	Microsoft®
<b>OIT</b>	Office of the Information and Technology
<b>OS</b>	Operating System
<b>PC</b>	Personal Computer
<b>PCM</b>	Prenatal Care Module
<b>PIP</b>	Pregnancy Issues and Problems
<b>POV</b>	Purpose of Visit
<b>RPC</b>	Remote Procedure Call
<b>RPMS</b>	Resource and Patient Management System
<b>SAC</b>	Standards and Conventions
<b>SNOMED CT®</b>	Systematized Nomenclature of Medicine—Clinical Terms
<b>TIU</b>	Text Integration Utility
<b>UI</b>	User Interface
<b>VA</b>	Veteran's Administration
<b>VS</b>	Visual Studio
<b>XB</b>	IHS/VA Utilities
<b>XU</b>	VA KERNEL

## Contact Information

If you have any questions or comments regarding this distribution, please contact the OIT Help Desk (IHS).

**Phone:** (888) 830-7280 (toll free)

**Web:** <http://www.ihs.gov/helpdesk/>

**Email:** [support@ihs.gov](mailto:support@ihs.gov)