



RESOURCE AND PATIENT MANAGEMENT SYSTEM

Clinical Reminders

(PXRM)

Patch 1006 National Reminder Update

Version 1.5
July 2009

Office of Information Technology (OIT)
Division of Information Resource Management
Albuquerque, New Mexico

Preface

This documentation applies to the National Clinical Reminders in PXRМ 1.5 Patch 1006.

Table of Contents

1.0	INTRODUCTION	1
1.1	Routines Modified.....	1
1.2	Routines in Computed Findings	1
1.3	Dialog Elements Update.....	1
1.4	Parameter for Lab	2
1.5	Logic Changes	2
1.6	Taxonomies Updated	2
1.7	Manuals to Review	2
1.8	Review and Accomplish Steps in the Patch Notes.....	2
1.9	Main Reminders Menu	5
2.0	REMINDER DEFINITIONS.....	6
2.1	National Reminder Definitions – Logic changes PXRМ 1.5p1006	6
2.1.1	IHS- ALCOHOL SCREEN 2008.....	6
2.1.2	IHS-DOMESTIC VIOLENCE 2008.....	6
2.1.3	IHS-MAMMOGRAM 2008.....	6
2.1.4	IHS-PAP SMEAR2008.....	6
2.1.5	IHS-MENINGITIS IMMUN 2008.....	6
2.1.6	IHS-TOBACCO SCREEN 2008.....	6
2.2	National Reminder Definitions – Immunization update.....	7
3.0	REMINDER TAXONOMY MANAGEMENT.....	8
3.1	Reminders with ICD0 Codes	8
3.1.1	IHS-COLONOSCOPY 2007.....	8
3.1.2	IHS-SIGMOIDOSCOPY	8
3.1.3	IHS-END STAGE RENAL DISEASE	8
3.2	Installing Reminder Taxonomies in Patch	9
3.2.1	IHS-BILATERAL MASTECTOMY	9
3.2.2	IHS-MAMMOGRAM 2008.....	9
3.2.3	IHS-PAP CODES 2008.....	9
3.2.4	IHS-HYSTERECTOMY 2008.....	10
4.0	REMINDER TERM MANAGEMENT (TRM)	11
5.0	REMINDER EXCHANGE	12
5.1	Installation of Reminders.....	12
6.0	NATIONAL REMINDER DIALOGS UPDATES.....	13
6.1	Immunization Dialogs	13
6.2	Alcohol Screen Dialog	13
6.3	Diabetic Foot Exam Dialog	14
6.4	Domestic Violence Dialog	14
6.5	Tobacco Screen	14
7.0	ALTERNATE DIALOG UPDATE INSTRUCTIONS.....	15

7.1	Updating Your Immunizations Dialogs	15
7.2	Updating Other Dialogs	17
7.2.1	Fileman Report to Locate Dialog Elements	18
7.2.2	Remove/Replace Findings or Additional Findings	19
8.0	EHR REMINDER CONFIGURATION.....	21
9.0	REMINDERS TEST	22
10.0	SETTING DEFAULT WEB SITE FOR REFERENCE INFORMATION	23
11.0	NEW PARAMETER FOR UNIDIRECTIONAL LAB	25
12.0	FREQUENTLY ASKED QUESTIONS.....	26
13.0	RESOURCE LIST	28
14.0	CONTACT INFORMATION.....	29

1.0 Introduction

National Clinical Reminders and dialogs were released in PXRМ 1.5 Patch 1005. PXRМ 1.5 Patch 1006 delivers updates to many of these release tools and problem fixes to the reminders software.

1.1 Routines Modified

The following routines were modified in Patch 1006:

- BPXRМREF - Fixed a bug in finding expired refusals
- PXRМPROB - Fixed a bug if there is no modified date in a problem
- BPXRМLAB - Updated to include results from V Lab with a unidirectional interface
- PXRМPINF - Fixed a bug if the HRCN is not setup when the patient is loaded
- PXRМTAX - Fixed a bug with ICD0 procedure codes not updating reminder maintenance
- BPXRМPRC – Fixed a bug with ICD0 procedure codes not updating reminder maintenance
- PXRМVSIT – Fixed an issue with V files that have no visit pointer

1.2 Routines in Computed Findings

The following routines included because they are in computed findings:

- BPXRМIMM
- BPXRМIM1
- BPXRМIM2
- BPXRМIM3

1.3 Dialog Elements Update

The following dialog elements were updated with Patient Education 2008 codes:

- All Immunization dialogs
- IHS-ALCOHOL SCREEN 2008
- IHS-DIAB FOOT EXAM 2008
- IHS-DOMESTIC VIOLENCE 2008
- IHS-TOBACCO SCREEN 2008

1.4 Parameter for Lab

Parameter for lab look up for sites using Unidirectional Lab interface.

1.5 Logic Changes

Logic changes from National Reminder set delivered with PXRМ 1.5p1005

- IHS-ALCOHOL SCREEN 2008 - term added with 2008 Patient Ed codes
- IHS-DOMESTIC VIOLENCE 2008 – term added with 2008 Patient Ed codes
- IHS-MAMMOGRAM 2008 – updated taxonomies
- IHS-MENINGITIS IMMUN 2008 age range is corrected to 11-18 years
- IHS -PAP SMEAR 2008 – updated taxonomies
- IHS-TOBACCO SCREEN 2008 – term added with 2008 Patient Ed codes

1.6 Taxonomies Updated

The taxonomies updated to include Inpatient codes for ICD0 look up are:

- IHS-MAMMOGRAM 2008
- IHS-PAP CODES 2008
- IHS-BILATERAL MASTECTOMY
- IHS-HYSTERECTOMY 2008

1.7 Manuals to Review

The site managers and clinical applications coordinators will need to review the manuals pxrm0150.1005o.pdf (Clinical Reminders Patch 1005 National Reminder Setup), Clinical Reminders Managers Manual, for information on reminder setup.

1.8 Review and Accomplish Steps in the Patch Notes

Sites need to review the list of reminders that are being sent in the patch. This list is in the next section and details what turns the reminder on and what turns it off.

The steps for update of Nation clinical reminders are:

If you have currently deployed the reminders and/or dialogs that you are updating, you should make the following changes:

1. If the site has made local changes to existing national dialogs, especially by adding ADDITIONAL FINDINGS to dialogs, there may be some problems. Use the following fileman search to look for these findings. Remove them from the

elements before installing the reminder. You can add them back after installation.

```

Fileman search:
Select OPTION: 3  SEARCH FILE ENTRIES
  OUTPUT FROM WHAT FILE: PACKAGE// REMINDER DIALOG      (330 entries)
  -A- SEARCH FOR REMINDER DIALOG FIELD: ADDITIONAL FINDINGS      (multiple)
  -A- SEARCH FOR REMINDER DIALOG ADDITIONAL FINDINGS SUB-FIELD: ?
      Answer with ADDITIONAL FINDINGS SUB-FIELD NUMBER, or LABEL:
          .01              ADDITIONAL FINDINGS
  -A- SEARCH FOR REMINDER DIALOG ADDITIONAL FINDINGS SUB-FIELD: .01
          ADDITIONAL FINDINGS
  -A- CONDITION: 'NULL'    <- "not null"

  -B- SEARCH FOR REMINDER DIALOG ADDITIONAL FINDINGS SUB-FIELD:
  -B- SEARCH FOR REMINDER DIALOG FIELD:
IF: A//      REMINDER DIALOG ADDITIONAL FINDINGS NOT NULL
DO YOU WANT THIS SEARCH SPECIFICATION TO BE CONSIDERED TRUE FOR CONDITION -A-
  1) WHEN AT LEAST ONE OF THE 'ADDITIONAL FINDINGS' MULTIPLES SATISFIES IT
  2) WHEN ALL OF THE 'ADDITIONAL FINDINGS' MULTIPLES SATISFY IT
  3) WHEN ALL OF THE 'ADDITIONAL FINDINGS' MULTIPLES SATISFY IT,
  OR WHEN THERE ARE NO 'ADDITIONAL FINDINGS' MULTIPLES
  CHOOSE 1-3: 1// 1
STORE RESULTS OF SEARCH IN TEMPLATE:
SORT BY: NAME//
START WITH NAME: FIRST//
FIRST PRINT FIELD: NAME
THEN PRINT FIELD: ADDITIONAL FINDINGS      (multiple)
THEN PRINT ADDITIONAL FINDINGS SUB-FIELD: .01  ADDITIONAL FINDINGS
THEN PRINT ADDITIONAL FINDINGS SUB-FIELD:
THEN PRINT FIELD:
Heading (S/C): REMINDER DIALOG SEARCH  Replace
DEVICE:  CONSOLE      Right Margin: 80//
REMINDER DIALOG SEARCH      MAY 19,2009  14:00      PAGE 1
NAME
ADDITIONAL FINDINGS
-----
      EX DEPRESSION
          V79.0
      IM INFLUENZA DONE
          V04.8
      IM INFLUENZA NASAL
          V04.8
      IM INFLUENZA SPLIT
          V04.8
      IM INFLUENZA WHOLE
          V04.8
      IM PNEUMO-PS2 DONE
          V03.83

      6 MATCHES FOUND

```

Figure 1-1: Sample Fileman search

2. Install the KIDS build. This build will only put the reminders and the dialogs into the Reminder Exchange file.
3. Review all the reminders and determine which ones should be activated at a site.
 - Reminders

All sites should install the new reminders which have new terms, taxonomies and/or logic.

You must install all Immunization Reminders. Existing immunization reminders will not work properly until the new reminders are installed from the exchange and are present on your system.

Do not use SKIP when installing refusals. Install them because of changes to the following:

- IHS-ALCOHOL SCREEN 2008
- IHS-DEPRESSION SCREEN 2008
- IHS-DOMESTIC VIOLENCE 2008
- IHS-MAMMOGRAM 2008
- IHS-MENINGITIS IMMUN 2008
- IHS-PAP SMEAR 2008
- IHS-TOBACCO SCREEN 2008

Currently deployed reminder site: if you do not want to install the dialog associated with these reminders skip the dialog installation and manually link your current dialog to the reminder. Remember that you will need to manually update the dialogs with the new patient education codes.

- Dialogs

Sites who have not deployed reminders OR who have not made any modifications to National dialogs released in PXRМ 1.5 patch 1005, do the following: (a) install all new reminder and dialogs., (b) link the dialog when prompted, (c) activate dialogs.

Site with deployed dialogs who have made local modifications to National Dialogs and/or who have local dialogs deployed, do the following

- Any modifications (particularly additional findings added to dialog elements) to the Nationally Deployed reminders may result in errors on install.
- Modifications that will be overwritten when you install a dialog element, group of the same name from the exchange: (a) any populated field - resolution, finding item, dialog text, etc., (b) blank fields do not overwrite anything (so will not remove additional findings if you added them previously; this can cause errors on install and/or require manual updating).
- Consider manually update the dialogs. See ALTERNATE DIALOG UPDATE instructions.

4. Put the new reminders into the EHR GUI and test the education topics. If a site has made local changes to reminders and added education topics, be sure to update these with the new topics because the patch does not update local reminders or local changes.

5. Edit the Clinical Reminder Parameters file to the new web site for Clinical Reporting System.
6. If needed, add the REMINDER COMPONENTS to the health summary so they can be seen and printed on the Reports tab.

1.9 Main Reminders Menu

The main reminders menu is called REMINDER CONFIGURATION and is found on the RPMS-EHR CONFIGURATION MENU (BEHOMENU). All setup is completed from this menu:

Reminder Configuration	
CFM	Reminder Computed Finding Management ...
DEF	Reminder Definition Management ...
DLG	Reminder Dialog Management ...
EXC	Reminder Exchange
INF	Reminder Information Only Menu ...
PAR	Reminder Parameters ...
RPT	Reminder Reports ...
SPO	Reminder Sponsor Management ...
TAX	Reminder Taxonomy Management ...
TRM	Reminder Term Management ...
TST	Reminder Test

Figure 1-2: Options on Reminder Configuration menu

2.0 Reminder Definitions

Refer to RPMS Clinical Reminders Patch 1005 National Reminder Setup guide delivered with PXRM 1.5p1005 and the RPMS Clinical Reminders Managers Manual Setup and Maintenance guide.

2.1 National Reminder Definitions – Logic changes PXRM 1.5p1006

2.1.1 IHS- ALCOHOL SCREEN 2008

Resolution: added reminder term IHS-ALCOHOL EDUCATION 2008

2.1.2 IHS-DOMESTIC VIOLENCE 2008

Resolution: added reminder term IHS-DOMESTIC VIOLENCE EDUCATION 2008

2.1.3 IHS-MAMMOGRAM 2008

Cohort: new taxonomy IHS-BILATERAL MASTECTOMY 2008

Resolution: new taxonomy IHS-MAMMOGRAM 2008

2.1.4 IHS-PAP SMEAR2008

Cohort: updated taxonomy IHS-HYSTERECTOMY 2008

Resolution: new taxonomy IHS-PAP CODES 2008

2.1.5 IHS-MENINGITIS IMMUN 2008

Cohort: changed to 11-18 years

2.1.6 IHS-TOBACCO SCREEN 2008

Resolution: added reminder term IHS-TOBACCO SCREEN 2008 EDUCATION

2.2 National Reminder Definitions – Immunization update

The routines used by the computed findings to resolve reminders were changed. Sites **MUST** install the new immunization reminders for the changes to the routines to take effect.

3.0 Reminder Taxonomy Management

The following provides information about managing the Reminder Taxonomy.

3.1 Reminders with ICD0 Codes

Reminders with ICD0 codes must be reviewed for inclusion of inpatient in the Patient Data Source.

Patient Data Source of IN (inpatient) must be added for ICD0 Procedure codes in taxonomies to function properly as findings in cohort and resolution logic.

From the RPMS-EDH Configuration menu, select REM | TAX | EDT.

The application displays the following:

Select Reminder Taxonomy: IHS-COLONOSCOPY 2007	Colonoscopy codes	LOCAL
...OK? Yes// (Yes)		
General Taxonomy Data		
NAME: IHS-COLONOSCOPY 2007 Replace		
BRIEF DESCRIPTION: Colonoscopy codes//		
CLASS: LOCAL//		
SPONSOR:		
REVIEW DATE:		
PATIENT DATA SOURCE: EN,PL,IN// <-- enter EN,PL,IN if this is not correct		

Figure 3-1: Accessing IHS-COLONOSCOPY 2007

3.1.1 IHS-COLONOSCOPY 2007

Verify PATIENT DATA SOURCE for EN, PL, IN.

3.1.2 IHS-SIGMOIDOSCOPY

Verify PATIENT DATA SOURCE for EN, PL, IN.

3.1.3 IHS-END STAGE RENAL DISEASE

Verify PATIENT DATA SOURCE for EN, PL, IN.

3.2 Installing Reminder Taxonomies in Patch

The updated Reminder Taxonomies in PXRМ 1.5, patch 1006 are installed through the exchange. These taxonomies also contain ICD0 procedure codes and Patient Data Source has been updated to EN,PL, IN.

A site might need to make its own taxonomy if the import does not work.

A taxonomy is a selection of ICD0, ICD9, or CPT codes. The user inputs them from the starting code to the ending code. One taxonomy can have multiple selection lists of codes. There is a secondary file that stores every entry between the starting and ending codes. Therefore an error in any code in the interval could cause the install to fail. If a site has two entries of the same code or the computer cannot tell the difference between two codes, the install will fail. Refer to Section 11.0 of the Clinical Reminders Patch 1005 National Reminder Set Up guide.

3.2.1 IHS-BILATERAL MASTECTOMY

Patient Data Source: EN, PL, IN.

Code Sets:					
ICD9 RANGE		ICD0 RANGE		CPT RANGE	
LOW	HIGH	LOW	HIGH	LOW	HIGH
		85.42	85.42		
		85.44	85.44		

Figure 3-2: Values in code sets for IHS-BILATERAL MASTECTOMY

3.2.2 IHS-MAMMOGRAM 2008

Patient Data Source: EN, PL, IN.

Code Sets:					
ICD9 RANGE		ICD0 RANGE		CPT RANGE	
LOW	HIGH	LOW	HIGH	LOW	HIGH

V76.11	V76.12	85.42	87.36	76090	76092
		87.37	87.37	G0204	G0204
				G0206	G0206
				77055	77057

Figure 3-3: Values in code sets for IHS-MAMMOGRAM 2008

3.2.3 IHS-PAP CODES 2008

Patient Data Source: EN, PL, IN.

Code Sets:					
ICD9 RANGE		ICD0 RANGE		CPT RANGE	

LOW	HIGH	LOW	HIGH	LOW	HIGH
V76.47	V76.47	91.46	91.46	88141	88167
V76.49	V76.49			Q0091	Q0091
V72.3	V72.3			88174	88175
V76.2	V76.2				

Figure 3-4: Values in code sets for IHS-PAP CODES 2008

3.2.4 IHS-HYSTERECTOMY 2008

Patient Data Source: EN, PL, IN.

Code Sets:					
ICD9 RANGE		ICD0 RANGE		CPT RANGE	
LOW	HIGH	LOW	HIGH	LOW	HIGH
		68.4	68.9	51925	51925
				56308	56308
				58150	58150
				58152	58152
				58550	58554
				58953	58954
				58951	58951
				59135	59135
				59525	59525

Figure 3-5: Values in code sets for IHS-HYSTERECTOMY 2008

4.0 Reminder Term Management (TRM)

Refer to RPMS Clinical Reminders Patch 1005 National Reminder Setup guide delivered with PXRM 1.5, patch1005 and the RPMS Clinical Reminders Managers Manual Setup and Maintenance guide.

CPY	Copy Reminder Term
EDT	Reminder Term Edit
INQ	Inquire about Reminder Term

Figure 4-1: Options for Reminders Term Management

The updated Reminder Terms in PXRM 1.5, patch 1006 that incorporated the 2008 patient education topics are the following:

IHS-ALCOHOL EDUCATION 2008

IHS-DOMESTIC VIOLENCE EDUCATION 2008

IHS-TOBACCO SCREEN 2008 EDUCATION

5.0 Reminder Exchange

The instructions below are on how to install the national reminders. Installation of patch 1006 will put the reminders into the REMINDER EXCHANGE file. The clinical application coordinator should then install them using REMINDER EXCHANGE. Install the Reminders (and associated dialogs) with 2008 appended to capture the updates. Activate the dialog after installation.

Refer to RPMS Clinical Reminders Patch 1005 National Reminder Setup guide delivered with PXRМ 1.5p1005 and the RPMS Clinical Reminders Managers Manual Setup and Maintenance guide for instructions on installing reminders from the reminder exchange.

Load the new reminders with the 2008 education topics.

5.1 Installation of Reminders

The following steps are very important.

1. The new reminder terms all have 2008 in their name. Be sure to install these components.
2. Install the new PAP and MAMMOGRAM reminders. They contain new taxonomies.
3. Install the new ALCOHOL, DEPRESSION, DOMESTIC VIOLENCE and TOBACCO reminders. They contain new reminder terms.
4. Do NOT use SKIP when installing refusals. Select I (install) at prompts because of changes.
5. When installing the Reminders, DO NOT USE SKIP for the Reminder Definition. Select I (install) at prompts because of changes.
6. Install ALL IMMUNIZATION reminders.

6.0 National Reminder Dialogs Updates

The following provides information about updating the National Reminder Dialogs.

6.1 Immunization Dialogs

All of the patient education groups have been updated to incorporate the 2008 patient education codes.

6.2 Alcohol Screen Dialog

The Alcohol Screen Dialog patient education group has been updated to incorporate the 2008 patient education codes. The dialog has been enhanced to incorporate user help display, and only offer CAGE if the screen is positive.

Reminder Resolution: Alcohol Screen

ALCOHOL SCREENING QUESTIONS Ask patient:

On average, how many day/wk do you drink?
 On a typical day when you drink, how many drinks do you have?
 What is the max # drinks you have had on 1 occasion in past 1 mo?

AT Risk (ABNORMAL) is defined as:

Men	>14 drinks/wk	>4 drinks/occasion
Women	>7 drinks/wk	>3 drinks/occasion
>65	>7 drinks/wk	>3 drinks/occasion

☐ Alcohol screening negative.
☒ Alcohol screening positive.

☒ Click here to ask CAGE questions and record CAGE results.
 The CAGE assessment consists of asking the patient the following questions:

CAGE QUESTIONS

☐ Patient admits to having felt the need to cut down on drinking.
☐ Patient admits to feeling annoyed by other's criticism of drinking.
☐ Patient admits to feeling bad or guilty about drinking.
☐ Patient admits to having had an "eye opener" in the morning.

Record CAGE Score

CAGE SCORES

☐ CAGE 0/4
☐ CAGE 1/4
☐ CAGE 2/4
☐ CAGE 3/4
☐ CAGE 4/4

SCORING: 2 or 3 affirmative answers should create a high index of suspicion. 4 affirmative answers indicate alcoholism.

☐ Check to indicate alcohol education done at this visit
* Indicates a Required Field

***** CLINICAL REMINDERS ACTIVITY *****
 Alcohol Screen:
 Patient reports potentially risky alcohol use

Examinations: **ALCOHOL SCREENING**

Clear Clinical Maint < Back Next > Finish Cancel

Figure 6-1: Options on Reminder Resolution for Alcohol Screen

6.3 Diabetic Foot Exam Dialog

The patient education element has been updated to incorporate the 2008 patient education code.

6.4 Domestic Violence Dialog

The Domestic Violence education group has been updated to incorporate the 2008 patient education codes.

6.5 Tobacco Screen

The Tobacco Education group has been updated to incorporate the 2008 patient education codes.

7.0 Alternate Dialog Update Instructions

The following provides information about alternate dialog update instructions.

7.1 Updating Your Immunizations Dialogs

All the immunization dialogs in contain an immunization education group. PXRМ 1.5p1005 delivered GRP IMMUNIZATION EDUCATION. Now that you have installed 2008 codes (AUMp9.1p3), the elements in this group now contain 2006 codes.

ALL immunization dialogs contain the same patient education group. If you have made local modifications to other parts of the dialog then you may choose to manually update this group of elements.

The simplest way is to edit the members of this group and replace the 2006 patient ed code with the new ones.

From the RPMS-EHR CONFIGURATION MASTER menu, navigate to the Dialog View (Dialog Groups)

Select REM | DLG | DLG | CV| G

Press enter until you see GRP IMMUNZATION EDUCATION.

Specify the ITEM NUMBER at the prompt (your actual item number may be different).

Dialog List		May 15, 2009 13:53:36	Page:	8 of 11
DIALOG VIEW (DIALOG GROUPS)				
+Item	Dialog Name	Dialog type	Status	
113	GRP DIABETIC FOOT	Dialog Group		
114	GRP DTAP OR PEDIARIX	Dialog Group		
115	GRP DTAP PED	Dialog Group		
116	GRP HEP A ADULT	Dialog Group		
117	GRP HEP A PED	Dialog Group		
118	GRP HEP B ADULT	Dialog Group		
119	GRP HEP B OR PEDIARIX	Dialog Group		
120	GRP HEP B PED	Dialog Group		
121	GRP HIBTITER	Dialog Group		
122	GRP HIGH RISK FLU	Dialog Group		
123	GRP HPV IMMUNIZATION	Dialog Group		
124	GRP HPV IMMUNIZATION 2008	Dialog Group		
125	GRP IMM DTAP REF YAK	Dialog Group		
126	GRP IMMUNIZATION EDUCATION	Dialog Group		
127	GRP IMMUNIZATION EDUCATION 2008	Dialog Group		
128	GRP INFLUENZA ADULT	Dialog Group		
+ + Next Screen - Prev Screen ?? More Actions >>>				
AD	Add	CV	Change View	INQ Inquiry/Print
CO	Copy Dialog	PT	List/Print All	QU Quit
Select Item: Next Screen//126 <- select Item number to edit that dialog group				

Figure 7-1: List from which to add/change

Dialog Edit List		May 15, 2009 13:59:55		Page: 1 of 4	
DIALOG GROUP NAME: GRP IMMUNIZATION EDUCATION					
Sequence	Dialog Details				Disabled
5	Dialog element: ED IMMUNIZATION PATIENT LITERATURE				
	Resolution: DONE AT ENCOUNTER				
	Finding type: EDUCATION TOPIC				
	Finding item: IM-PATIENT LITERATURE 2006 [ED(334)]				
	Additional prompts: PXRМ LEVEL OF UNDERSTANDING				
	PXRМ PED LENGTH				
	PXRМ COMMENT				
10	Dialog element: ED IMMUNIZATION INFORMATION				
	Resolution: DONE AT ENCOUNTER				
	Finding type: EDUCATION TOPIC				
	Finding item: IM-INFORMATION 2006 [ED(333)]				
	Additional prompts: PXRМ LEVEL OF UNDERSTANDING				
	PXRМ PED LENGTH				
	PXRМ COMMENT				
+ + Next Screen - Prev Screen ?? More Actions >>>					
CO	Copy Dialog Group	DP	Progress Note Text	ED	Edit/Delete Group
DD	Detailed Display	DT	Dialog Text	QU	Quit
Select Sequence: Next Screen//5 <- select Sequence number to edit that dialog element					
CURRENT DIALOG ELEMENT NAME: ED IMMUNIZATION PATIENT LITERATURE					
Select one of the following:					
E	Edit				
C	Copy and Replace current element				
D	Delete element from this dialog				
Select Dialog Element Action: E// dit					
Dialog Element Type: E// lement					
CURRENT DIALOG ELEMENT/GROUP NAME: ED IMMUNIZATION PATIENT LITERATURE					
Used by: GRP IMMUNIZATION EDUCATION (Dialog Group)					
NAME: ED IMMUNIZATION PATIENT LITERATURE Replace					
DISABLE:					
CLASS: LOCAL//					

```

SPONSOR:
REVIEW DATE:
RESOLUTION TYPE: DONE AT ENCOUNTER//
ORDERABLE ITEM:
FINDING ITEM: IM-PATIENT LITERATURE 2006// ED.IM- LITERATURE   IM-LITERATURE       IM-L
...OK? Yes//      (Yes)
DIALOG/PROGRESS NOTE TEXT:
Vaccination literature given.

    Edit? NO//
ALTERNATE PROGRESS NOTE TEXT:
The patient/family was given written information about immunizations.

    Edit? NO//
EXCLUDE FROM PROGRESS NOTE:
Input your edit comments.
Edit? NO// ^      <- exit editing

```

Figure 7-2: Sample prompts for selected item to edit

```

Dialog Edit List           May 15, 2009 18:50:31           Page:    1 of    4
DIALOG GROUP NAME: GRP IMMUNIZATION EDUCATION
Sequence      Dialog Details                               Disabled

    5          Dialog element: ED IMMUNIZATION PATIENT LITERATURE
                Resolution: DONE AT ENCOUNTER
                Finding type: EDUCATION TOPIC
                Finding item: IM-LITERATURE [ED(4128)]  <- now its updated with 2008
code
                Additional prompts: PXRМ LEVEL OF UNDERSTANDING
                                   PXRМ PED LENGTH
                                   PXRМ COMMENT

    10         Dialog element: ED IMMUNIZATION INFORMATION
                Resolution: DONE AT ENCOUNTER
                Finding type: EDUCATION TOPIC
                Finding item: IM-INFORMATION 2006 [ED(333)]
                Additional prompts: PXRМ LEVEL OF UNDERSTANDING
                                   PXRМ PED LENGTH
                                   PXRМ COMMENT
+      + Next Screen  - Prev Screen  ?? More Actions  >>>
CO  Copy Dialog Group  DP  Progress Note Text  ED  Edit/Delete Group
DD  Detailed Display   DT  Dialog Text         QU  Quit
Select Sequence: Next Screen//10

Do this for the remaining elements replacing with the following at the Finding Item
prompt:
    ED.IM-INFORMATION
    ED.IM-SCHEDULE
    ED.IM-DEFICIENCY
    ED.IM-PREVENTIN
    ED.ED.IM-FOLLOW-U

```

Figure 7-3: Sample prompts for another selected item to edit

7.2 Updating Other Dialogs

In order to update your local and modified national dialogs with the new patient education codes, you will need to find which Dialog Elements and Dialog Groups use Patient Education Finding Items and Additional Findings. Any dialog element whose findings or additional findings were assigned prior to the installation of the 2008

patient education codes map to the 2006 codes. These need to be manually replaced in your dialogs with the newest code.

If you are not sure or do not remember where you used patient education in your dialogs, you can use fileman to search old codes then use this as a guide for updates.

7.2.1 Fileman Report to Locate Dialog Elements

Use the following example to locate the dialog elements with now inactive 2006 patient education codes:

```

Enter or Edit File Entries
Print File Entries
Search File Entries
Modify File Attributes
Inquire to File Entries
Utility Functions ...
Data Dictionary Utilities ...
Transfer Entries
Other Options ...

Select VA FileMan Option: search File Entries
OUTPUT FROM WHAT FILE: V PATIENT ED// REMINDER DIALOG
                        (562 entries)

-A- SEARCH FOR REMINDER DIALOG FIELD: FILE(FINDING ITEM)["EDUCATION"]
-B- SEARCH FOR REMINDER DIALOG FIELD: FINDING ITEM["2006"]
-C- SEARCH FOR REMINDER DIALOG FIELD: ADDITIONAL FINDINGS      (multiple)
   -C- SEARCH FOR REMINDER DIALOG ADDITIONAL FINDINGS SUB-FIELD: FILE(#.01)["E"]
   -D- SEARCH FOR REMINDER DIALOG ADDITIONAL FINDINGS SUB-FIELD: (#.01)["2006"]
   -E- SEARCH FOR REMINDER DIALOG ADDITIONAL FINDINGS SUB-FIELD:
   -E- SEARCH FOR REMINDER DIALOG FIELD:

IF: AB      FILE(FINDING ITEM)["EDUCATION"]      and FINDING ITEM["2006"]
OR: CD
      CONDITION -D- WILL APPLY TO THE SAME MULTIPLE AS CONDITION -C-
      ...OK? Yes//      (Yes)
      Or REMINDER DIALOG ADDITIONAL FINDINGS
      together with REMINDER DIALOG (#.01)["2006"]

DO YOU WANT THIS SEARCH SPECIFICATION TO BE CONSIDERED TRUE FOR CONDITION -C-
1) WHEN AT LEAST ONE OF THE 'ADDITIONAL FINDINGS' MULTIPLES SATISFIES IT
2) WHEN ALL OF THE 'ADDITIONAL FINDINGS' MULTIPLES SATISFY IT
CHOOSE 1-2: 1//

OR:

STORE RESULTS OF SEARCH IN TEMPLATE:

SORT BY: NAME//
START WITH NAME: FIRST//
FIRST PRINT FIELD: .01;L40;S1;" " NAME
THEN PRINT FIELD: 15;C5;L60;" " FINDING ITEM
THEN PRINT FIELD: 18 ADDITIONAL FINDINGS (multiple)

```

```

    THEN PRINT ADDITIONAL FINDINGS SUB-FIELD: (#.01);C5;L60;" "
    THEN PRINT ADDITIONAL FINDINGS SUB-FIELD:ADDITIONAL FINDINGS SUB-FIELD:
    THEN PRINT FIELD:
    Heading (S/C): REMINDER DIALOG SEARCH  Replace
    DEVICE: ;;999  Virtual

    REMINDER DIALOG SEARCH                                MAY 18,2009  10:48      PAGE 1
    -----

    CPT PAIN CONTRACT NEW S0315  <- Element or group
      S0315
      CPM-MEDICATION 2006  <- finding or additional finding

    CPT PAIN CONTRACT RENEW S0316
      S0316
      CPM-MEDICATION 2006

    ED AOD-COMPLICATIONS  <- Element or group
      AOD-COMPLICATIONS 2006  <-finding or additional finding

    ED AOD-CONTINUUM OF CARE
      AOD-CONTINUUM OF CARE 2006

    ED AOD-CULTURAL/SPIRITUAL ASPECTS OF HEA
      AOD-CULTURAL/SPIRITUAL ASPECTS OF HEALTH 2006

    ED AOD-DISEASE PROCESS
      AOD-DISEASE PROCESS 2006

```

Figure 7-4: Example of report to find dialog elements with inactive patient ed codes

7.2.2 Remove/Replace Findings or Additional Findings

You can remove or replace findings and additional findings by editing the element or group that contains the item:

- Finding Item - you can REPLACE at the prompt with the new finding item
- Additional Findings - you must REMOVE each finding with @, then ADD BACK the new additional findings

Below is an example:

```

    Dialog element: HF CURRENT SMOKER
    Resolution: OTHER
    Finding type: HEALTH FACTOR
    Finding item: CURRENT SMOKER [HF(2)]
    Additional Finding: TO-COMPLICATIONS 2006 [ED(145)]
    Additional prompts: PXRM LEVEL OF UNDERSTANDING
                      PXRM PED LENGTH
                      PXRM COMMENT

```

Figure 7-5: Example of remove/replace findings or additional findings

Navigate to the Reminder Dialog menu then change view to find the Element or Group you want to edit by selecting BEH | REM | DLG | DLG | CV. Then select Element or Group to find the item you want to edit.

Below is an example:

```

Dialog Name:  HF CURRENT SMOKER

CURRENT DIALOG ELEMENT/GROUP NAME: HF CURRENT SMOKER
Used by:  GRPOLD CURRENT SMOKER (Dialog Group)
         GRP CURRENT SMOKER (Dialog Group)

NAME: HF CURRENT SMOKER//
DISABLE:
CLASS: LOCAL//
SPONSOR:
REVIEW DATE:
RESOLUTION TYPE: OTHER//
ORDERABLE ITEM:
FINDING ITEM: CURRENT SMOKER//  < if this were a finding item you wanted to
    replace, you can type the prefix then the item (HF.CURRENT SMOKELESS for example)
    that you want to place here.  Because there can be only 1 finding item per group
    or element, you do not need to remove the item first
DIALOG/PROGRESS NOTE TEXT:
Patient is a current smoker

    Edit? NO//
ALTERNATE PROGRESS NOTE TEXT:
    No existing text
    Edit? NO//
EXCLUDE FROM PROGRESS NOTE:
SUPPRESS CHECKBOX:
Select ADDITIONAL FINDINGS: TO-COMPLICATIONS 2006
    //?  <-  Put a ? here to see how many additional findings there are.
    Because you can have multiple additional findings, you must REMOVE each one
    using the @ then ADD BACK the correct ones.
    Answer with ADDITIONAL FINDINGS:
    TO-COMPLICATIONS 2006

Select ADDITIONAL FINDINGS: TO-COMPLICATIONS 2006
    // @
    SURE YOU WANT TO DELETE? y  (Yes)
Select ADDITIONAL FINDINGS:
RESULT GROUP/ELEMENT:
Select SEQUENCE: 10//
SEQUENCE: 10//
    ADDITIONAL PROMPT/FORCED VALUE: PXRМ COMMENT//
    OVERRIDE PROMPT CAPTION:
    START NEW LINE: YES//
    EXCLUDE FROM PN TEXT:
    REQUIRED:
Select SEQUENCE:
Input your edit comments.
Edit? NO//

```

Figure 7-6: Example of HF Current Smoker dialog

8.0 EHR Reminder Configuration

After installing the new reminders and dialogs, activating dialogs, you can proceed with adding the reminders into the GUI display.

Refer to RPMS Clinical Reminders Patch 1005 National Reminder Setup guide delivered with PXRM 1.5, patch1005 and the RPMS Clinical Reminders Managers Manual Setup and Maintenance guide for instructions on configuring the GUI display.

Note: Be sure to TEST all new reminders and dialogs prior to deploying to the users.

Test all local and edited nation dialogs to check for education codes that need updating.

9.0 Reminders Test

Refer to RPMS Clinical Reminders Patch 1005 National Reminder Setup guide delivered with PXRM 1.5, patch1005 and the RPMS Clinical Reminders Managers Manual Setup and Maintenance guide for instructions on testing reminders.

10.0 Setting Default Web Site for Reference Information

The default link for reference material is set in the CLINICAL REMINDER PARAMETERS file. This file has one entry that contains parameters used by Clinical Reminders. If you do not have permission to EDIT files in FILEMAN, ask your site manager to perform this step.

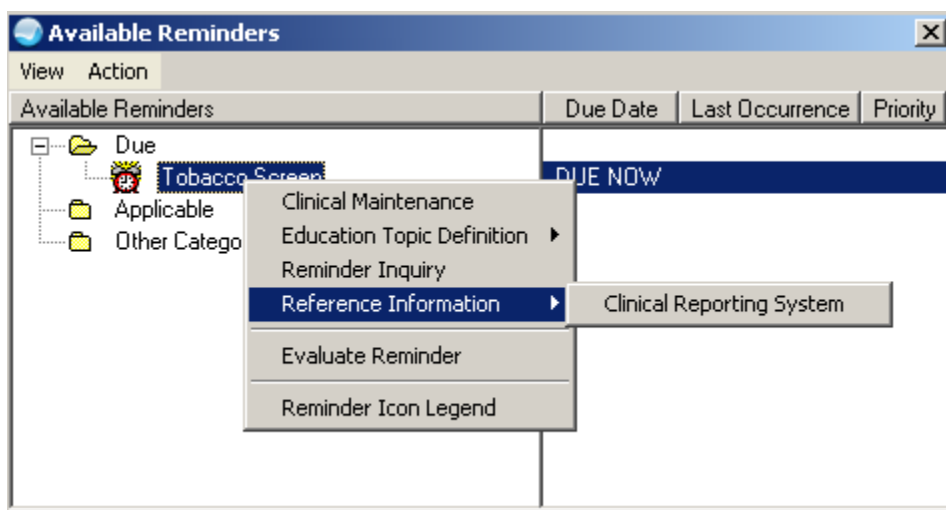


Figure 10-1: Option to select to access the Reference Information

The following is a file description for the CLINICAL REMINDER PARAMETERS file.

From the Programmer Prompt, do the following:

```
EHR>D P^DI
VA FileMan 22.0
Select OPTION:      ENTER OR EDIT FILE ENTRIES
INPUT TO WHAT FILE: REMINDER DEFINITION// CLINICAL REMINDER PARAMETERS
                   (1 ENTRY)
EDIT WHICH FIELD: ALL//

Select CLINICAL REMINDER PARAMETERS ONE: 1
...OK? Yes//      (Yes)

one: 1//
DEFAULT REMINDER DISCLAIMER:
The following disease screening, immunization and patient education recommendations
are offered as guidelines to assist in your practice. These are only
recommendations, not practice standards. The appropriate utilization of these for
your individual patient must be based on clinical judgment and the patient's current
status.

Edit? NO//
```

```
SITE REMINDER DISCLAIMER:  
No existing text  
Edit? NO//  
MAIL GROUP FOR ERRORS: REMINDERS ERRORS//  
Select URL: www.ihs.gov/cio/crs/index.asp// @ - old one  
SURE YOU WANT TO DELETE THE ENTIRE 'www.ihs.gov/cio/crs/index.asp' URL? Y  
(Yes)  
Select URL: www.ihs.gov/cio/crs/  
Are you adding 'www.ihs.gov/cio/crs/' as a new WEB SITES (the 1ST for this CLINICAL  
REMINDER PARAMETERS)? No// y(Yes) - new one  
WEB SITE TITLE: Clinical Reporting System
```

Figure 10-2: Prompts within Programmer mode

11.0 New Parameter for Unidirectional Lab

The following information is for sites running the unidirectional lab interface (NOT the bi-directional).

Because the unidirectional interface enters data into the LR ACCESSION NO field of the VLAB file the same as data coming from the laboratory application, these results were not being included in the reminders.

There is now a parameter named BPXRМ LAB UNI INTERFACE included in this patch. Setting this to Yes if a site uses the UNIDIRECTIONAL lab interface will allow these results to be included.

```
Select General Parameter Tools Option:

OC      Order Check Expert System Main Menu ...
TI      ORMTIME Main Menu ...
UT      CPRS Clean-up Utilities ...
XX      General Parameter Tools ...

Select CPRS Configuration (IRM) Option: XX  General Parameter Tools

LV      List Values for a Selected Parameter
LE      List Values for a Selected Entity
LP      List Values for a Selected Package
LT      List Values for a Selected Template
EP      Edit Parameter Values
ET      Edit Parameter Values with Template
EK      Edit Parameter Definition Keyword

Select General Parameter Tools Option: ep  Edit Parameter Values
      --- Edit Parameter Values ---

Select PARAMETER DEFINITION NAME: BPXRМ LAB UNI INTERFACE      Lab Unidirectional
Interface

BPXRМ LAB UNI INTERFACE may be set for the following:

      100 Division      DIV      [choose from INSTITUTION]
      200 System        SYS      [YAKIMA-HC.PRT.IHS.GOV]

Enter selection: 200  System  YAKIMA-HC.PRT.IHS.GOV

----- Setting BPXRМ LAB UNI INTERFACE  for System: YAKIMA-HC.PRT.IHS.GOV -----
Value: ??
Set to YES if the site is using the unidirectional lab interface
```

Figure 11-1: Prompts for determining the BPXRМ LAB UNI INTERFACE value

If the Value (prompt) is set to YES, the site is using the unidirectional lab interface.

12.0 Frequently Asked Questions

Below are frequently asked questions about national reminders.

Question 1: Why didn't my reminders and dialogs update after IT loaded the patch?

Answer: Reminders and dialogs are tools and do not automatically update. Loading PXRM 1.5p1006 places the updated reminders and dialogs in the Reminder Exchange. These must be installed by the CAC/IT staff and configured in the EHR.

Question 2: All my immunization reminders now show due even though the Immunization Forecaster shows that they are NOT due.

Answer: You MUST install all of the new immunization reminders. The updated routine that looks for the immunization forecaster requires that the new immunization reminders be on your RPMS.

Question 3: I installed the new dialog but its still entering 2006 patient education codes into the system.

Answer: When you install reminder dialogs from the exchange, it does not replace the existing dialog, element or group. Only fields within the element that are populated are written to the existing element of the same name. Blank fields do nothing – they do not remove data on the existing data of the same name.

Example:

You added an additional finding to the HF CESSATION SMOKER when you deployed Reminders 1.5p1005:

```
5      Dialog element: HF CESSATION SMOKER
      Resolution: OTHER
      Finding type: HEALTH FACTOR
      Finding item: CESSATION-SMOKER [HF(30)]
      Additional Finding: TO-QUIT 2006 [ED(3805)]
      Additional prompts: PXRM COMMENT
```

Figure 12-1: Example of additional findings

Now you load Reminders 1.5p1006. You are installing the IHS-TOBACCO SCREEN 2008 reminder and dialog. The reminder exchange element “HF CESSATION SMOKER” exists on your system. The new element has only a finding (no additional finding).

5.10.10.5 HF CESSATION SMOKER	element	X
Finding: CESSATION-SMOKER (HEALTH FACTOR)		

Figure 12-2: Example of finding

When you go to install you see this message and select Yes:

Install reminder dialog and all components with no further changes: Y//

Only the fields with data from the exchange will overwrite yours (Resolution, Finding type, Finding item, Dialog and Progress note text, etc.). Because the additional finding field in BLANK in the new dialog, your “old” patient education additional finding remains.

Question 4: I installed my reminder and dialog. I replaced the old reminder with the new one but there’s no dialog.

Answer: Check to see that you linked the dialog to the reminder. Check to see that you enabled the dialog.

Troubleshooting and Common Problems:

[EHR Reminders-1005 troubleshooting guide 01_15_09.doc](#)

13.0 Resource List

General reminders info:

<ftp://ftp.ihs.gov/pubs/EHR/Training/Guides/EHR%20Reminders/>

PXRМ 1.5 p1005 National Reminder Setup guide:

[pxrm0150.1005o.pdf](#)

Troubleshooting guide:

[EHR Reminders-1005 troubleshooting guide 01 15 09.doc](#)

Clinical Reminders Managers Manual:

[EHR Reminders Guide.doc](#)

2009 Reminders course materials:

<ftp://ftp.ihs.gov/pubs/EHR/Training/Manuals/Anatomy%20and%20Physiology%20of%20Reminders/>

14.0 Contact Information

If you have any questions or comments regarding this distribution, please contact the OIT Help Desk (IHS).

Phone: (505) 248-4371 or (888) 830-7280 (toll free)

Fax: (505) 248-4363

Web: <http://www.ihs.gov/GeneralWeb/HelpCenter/Helpdesk/index.cfm>

Email: support@ihs.gov